

## Minneapolis - FCM

[www.metroairports.org](http://www.metroairports.org)

10100 Flying Cloud Drive, Eden Prairie, MN 55347

---



**Airport Manager:** Mike Wilson - 763-537-2058 -  
Mike.Wilson@mspmac.org

**Contact Person:** Mike Wilson - 612-224-5949

**AWOS/ASOS:** 952-941-4156 - VHF 124.9

**MnWAS Loc/Hrs:** See FBOs

**Attended:** All/All/All

**Available Fuel:** 100LL, Jet A - available 24 hours with credit card at  
Modern Avionics and Hummingbird

**FBO(s):** Elliott Aviation of Minneapolis, Inc. - 952-944-1200 -  
130.60 - lharting@elliottaviation.com -  
[www.elliottaviation.com](http://www.elliottaviation.com)

Executive Aviation - 952-943-1519 - 122.95 -  
sherrys@executive-aviation.com - [www.executive-aviation.com](http://www.executive-aviation.com)

Hummingbird Aviation LLC - 952-944-2628 -  
chris@hummingbirdhelicopters.us -  
[www.hummingbirdhelicopters.us](http://www.hummingbirdhelicopters.us)

Modern Avionics, Inc. - 952-941-2783 -  
kurt@modernavionics.com - [www.modernavionics.com](http://www.modernavionics.com)

Premier Jet Center - 952-641-2020 - 122.85 -  
rjenson@fargojet.com - [www.premierjetcenter.us](http://www.premierjetcenter.us)

Thunderbird Aviation, Inc. (FCM) - 952-941-1212 -  
130.05 - ngo@thunderbirdaviation.com -  
[www.thunderbirdaviation.com](http://www.thunderbirdaviation.com)

**Businesses:** Aviation Charter, Inc. - 952-943-1519  
Inflight Pilot Training - 952-698-3000 - 122.95 -  
fly@inflightpilottraining.com - [inflightpilottraining.com](http://inflightpilottraining.com)  
Roger Aviation LLC - 952-943-2835 -  
rogermcveety@gmail.com - [www.rogeraviation.com](http://www.rogeraviation.com)

**Ground Transport:** Taxi; rentals & courtesy car at Elliott Aviation, Executive  
Aviation & Premier Jet Center

**Food Service:** Vending machines

**Dining:** Numerous options near airport

**Lodging:** Contact FBOs

**Airport Events:** See [www.wotn.org](http://www.wotn.org)

**Underwing Camp:** No

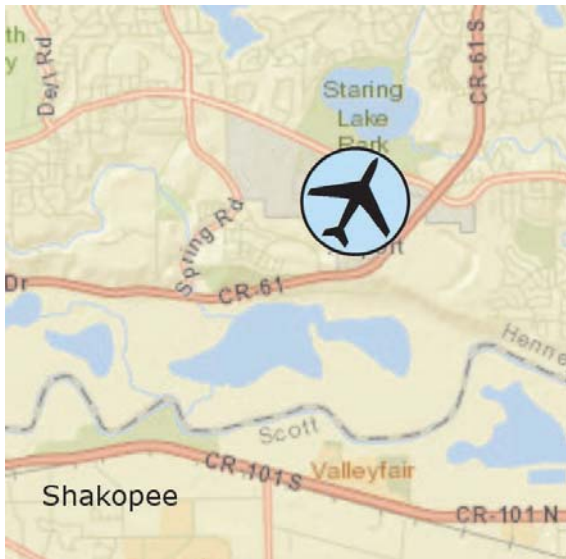
**Campgrounds:** None reported

**Local Attractions:** Golf Courses; ValleyFair; Mystic Lake Casino;  
Canterbury Downs; Mall of America; Eden Prairie Mall

**Comments:** Night time noise abatement in effect. Procedures and  
pilot guide available at [www.macnoise.com/pilots](http://www.macnoise.com/pilots).

Field Elev: 906' TPA: 1906' (1000' AGL)

Minneapolis - FCM



SEC. CH: TWIN CITIES

LAT: 44-49-38.068N

LONG: 093-27-25.727W

Approaches: ILS VOR VOR-DME

RNAV LOC

Calm Wind Rwy 10R

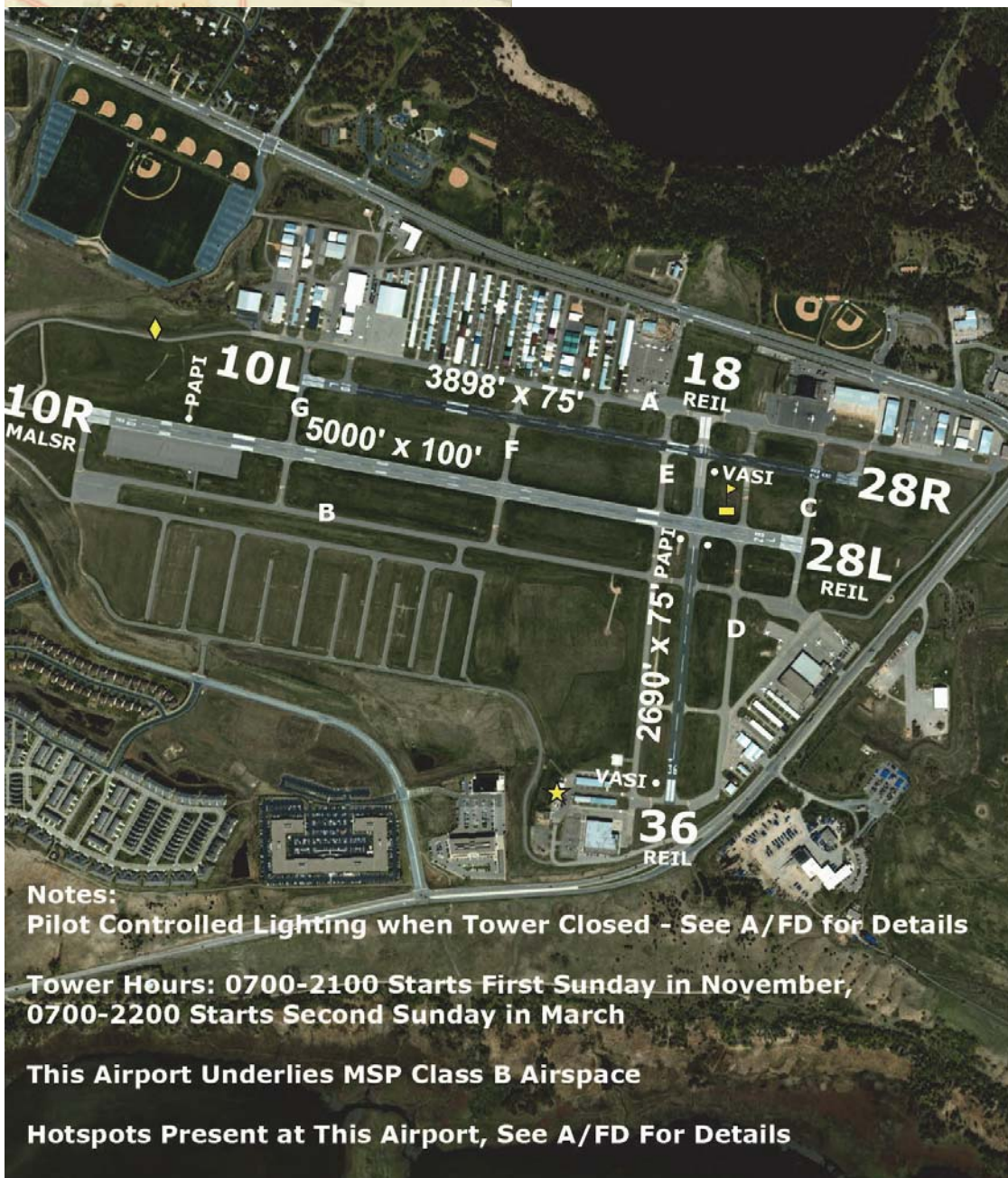
Right Traffic Rwy 10R, 28R

COMM: 119.15 TWR (L)

WX: VHF 124.9 ATIS: 124.9

GND: 121.7

APP: 134.7 MSP



**Notes:**

Pilot Controlled Lighting when Tower Closed - See A/FD for Details

Tower Hours: 0700-2100 Starts First Sunday in November,  
0700-2200 Starts Second Sunday in March

This Airport Underlies MSP Class B Airspace

Hotspots Present at This Airport, See A/FD For Details

Flying Cloud Airport