

The LEIGHTON Newsletter

Produced by the
Technical Services Group

Leighton to develop another major ABC complex

Following the recent award to Leighton Contractors of the project management contract for the development of the ABC's broadcasting headquarters in Sydney, Leighton Contractors has won a tender for the project management of a further major ABC development in Melbourne.

Entitled the Southbank Project, this development is located in the heart of Melbourne's Art Centre precinct and is adjacent to several existing art-related facilities including the Melbourne Concert Hall, the State Theatre, Ballet School and Art Gallery.

Leighton has been appointed to undertake work on the development in two stages; pre and post submission to the Parliamentary Standing Committee on Public Works.

The proposed seven storey building, on the new Southbank Boulevard, has a total floor area of 18,000 square metres.

Space will be provided on the 3,700 square metre site for a rehearsal hall for the Melbourne Symphony Orchestra, also practice and administration areas for the orchestra.

The rehearsal hall will be large enough to accommodate the 100 ▶

In this edition

- Focus on traditional strengths pays dividends – Page 3
- New joint ventures expand property development in the USA – Page 5
- Leighton wins contract in Hong Kong to construct toll-way infrastructure – Page 7
- Light rail transit project meets 'lucky' target date – Page 8

The architect's initial concept drawings for the front elevation



(continued from page 1)
musicians of a full symphony orchestra and an audience of 250 people. On special occasions the studio will be able to cater for meetings of up to 600 people. It will be 30 metres long, 20 metres wide and 13 metres high.

The new building will also house production, studio and administration areas for the ABC's metropolitan, regional and national FM broadcasting stations. The performance studio for recording drama and other shows involving talent will be 14 metres long, 9 metres wide and 8.4 metres high.

The project is very complex technically due to the demands of the space and technical fitouts. The rehearsal hall and performance studio must meet stringent acoustic requirements and each will be constructed as a concrete box within another concrete box, with the inner box isolated from the outer structure.

The studio clusters are backed up by areas for production of information and specialist programmes and the necessary administration and maintenance areas.

In line with ABC policy, the building will also have a roof top childminding centre.



Planning for the project gets under way

It is expected that the design and approval phase will be continued through to May next year with construction commencing one month later and completion late in 1990.

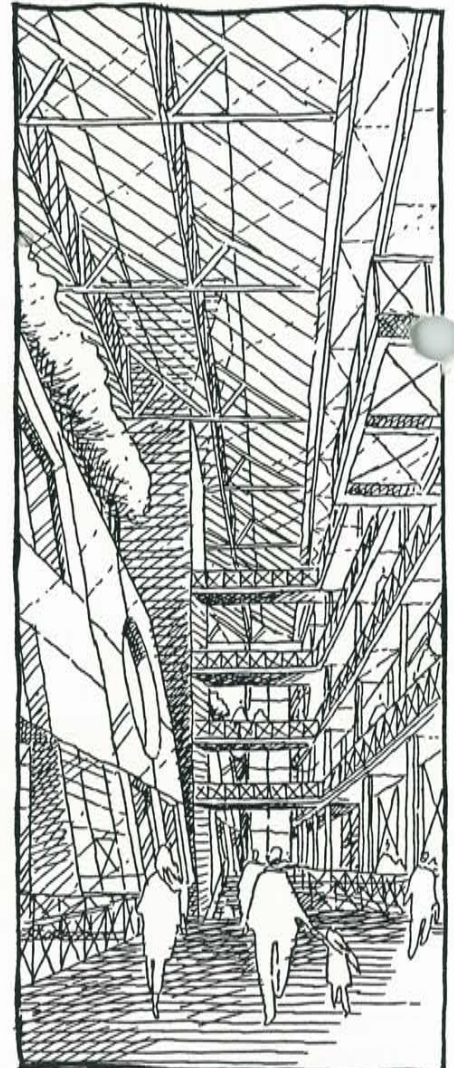
The original proposal was prepared by Bob Hunter of the Technical Services Group, St Leonards and Joe Sutton of Leighton in Melbourne. Alan Mitchell has been appointed as project manager. Rufin Mak is the design manager.

Consultants working on the project include Daryl Jackson Pty

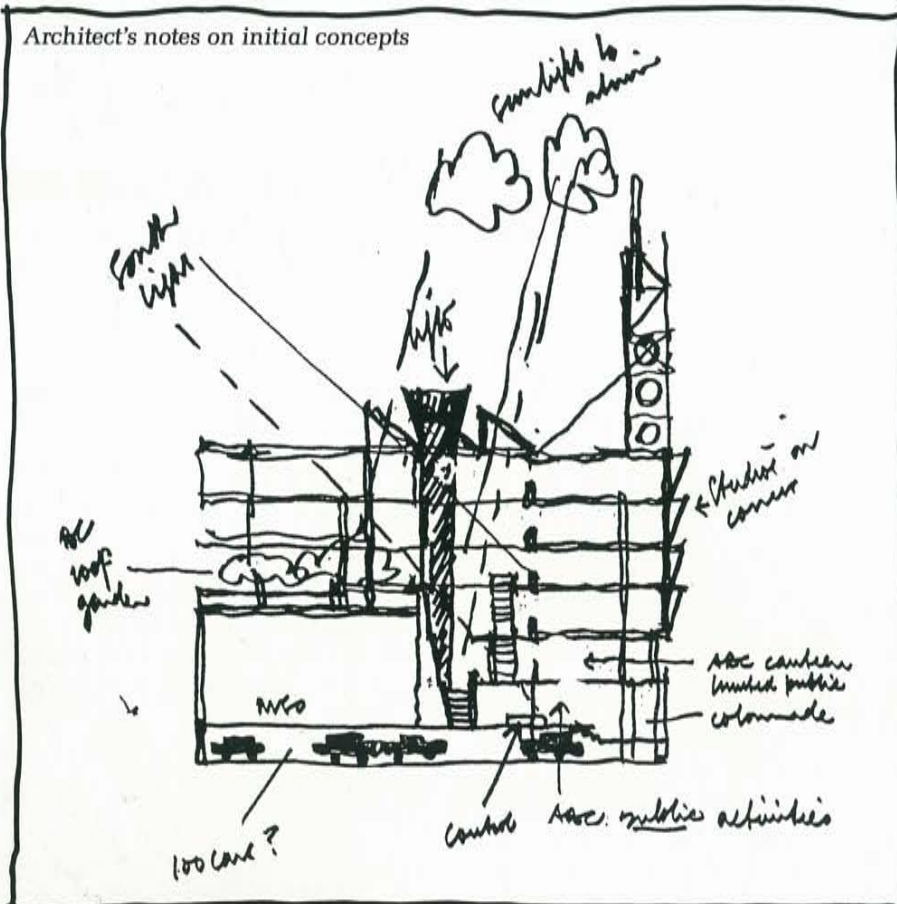
Ltd (architect), Norman Disney & Young Pty Ltd (services), John Connell Group (structural) and Watson Moss Growcott (acoustics).

The ABC representatives are Lindsay Short (project director) and Ray Moore (project coordinator). Tom Forgan again assumes the role of chairman of the Design Review Panel. ■

Impression of the large atrium



Architect's notes on initial concepts



Focus on traditional strengths pays dividends

During the past year Leighton Holdings Limited has made substantial progress in the implementation of its recovery plan. This was reflected in a 66 per cent rise in net operating profit and a return to shareholders, said chief executive Wal King.

'We have made considerable progress in rationalising our operations, disposing of underperforming assets and re-organising management responsibilities. This strategy is designed primarily to improve the value of our business and the returns provided to shareholders.

'People are the driving force in Leighton and are thus our most valuable asset. The performance during the past year is a tribute to their loyalty, commitment and skill in responding to the challenges posed by a need to make significant changes to our operations.

After tax operating profit rose by 66 per cent to \$11.1 million from \$6.7 million in 1986/87. These results were achieved on a 9.9 per cent rise in revenue to \$1.49 billion from \$1.36 billion in the previous year. About 70 per cent of revenue was generated within Australia.

'The key to our performance has been to focus clearly on traditional strengths. This has been supported by a streamlined structure and improved management and operating procedures to increase accountability and reduce costs.

'With the 38 per cent increase in building revenue compared with the previous year, the Group has moved towards achieving a desirable balance of building, civil engineering and property development work. This insulates

us against market downturn and increases our ability to respond quickly to new trends.

'Additionally, through a deliberate process of decentralising decision-making, the regional operations of each company are now well placed to take advantage of local opportunities.

'A further key initiative has been the disposal of underperforming assets and fringe investments. The successful sale during the year of assets and investments largely held by Leighton Properties realised \$28 million. This initiative, together with a policy of profit retention and the provision of a subordinated loan by Hochtief, has resulted in improved liquidity and a strengthened Group balance sheet.

'To extend the profitability of property developed by operating companies, the Group is currently making arrangements for establishing an unlisted property trust to own and manage selected projects. This strategy is designed to improve returns by generating ongoing income and capital profits in addition to the construction and development profits traditionally derived from property development.'

Wal King said that, overseas, initiatives within Leighton Asia had included senior management changes and a greater emphasis on developing the skills of local personnel. Also, ten per cent of the Ipco Group in Singapore was now held by the executive management and staff in a move which was designed to provide motivation and incentive to enhance profit performance.

In the United States, there was continuing difficulty with the operations of Green Construction.

'A planned strategy to restrict the size of the business and reduce ongoing loss exposure in Green is being implemented progressively. An ultimate solution, which will have the best long-term impact on the Group, is also being actively progressed,' he said.

Looking to the future, Wal King said that Leighton was entering

New director for Leighton

Dieter Adamsas has been appointed a director of Leighton Holdings Limited.

In making the announcement Group managing director Wal King said that Dieter Adamsas would be a valued addition to the company's board of directors, based on his high level of experience with Leighton and with the construction industry within Australia and overseas.

'Dieter has a strong reputation in this industry and throughout Leighton and he is certain to play a major role in the future development of the company,' he said. ■



Extensions to Defence Academy nearly ready for new cadet intake

Work is nearing completion on the construction of additional accom-

modation for cadets at the Australian Defence Force Academy in Canberra.

The project commenced in mid-January with a 40 week programme. Despite delays totalling nine weeks, the two blocks being built by Leighton Contractors will be handed over to the client within days of the original completion date. This will allow time for staff at the Academy to prepare for the arrival of next year's cadet intake.

The \$3,200,000 contract involved extensive excavation in rock, placing 500 cubic metres of concrete and laying 350,000 bricks in two, three-storey buildings. The contract included the complete fitout of each of the 96 bedrooms with furniture such as wardrobes, cupboards, desks, shelving, gun-racks, pin-boards, light pelmets and beds.

Leighton Contractors was responsible for constructing all of the original cadet accommodation at the ADEFA complex, involving 20 buildings containing a total of 960 bedrooms completed in October 1984.



The project team is Bryan Moir (project manager), Geoff Withers (administration manager), Paul Fogarty (site manager), Jim O'Neill (foreman) and Marie Minchenko (site secretary). ■



The project team

(Continued from page 3) the financial year with a solid base on which to achieve improved performance.

'Available prospects in project and construction management, building, mining and private sector civil engineering work, together with a strong level of

work in hand, are expected to underpin a further lift in our financial results.

'During the past two years, Leighton has demonstrated that it has the flexibility, breadth of capability and human resources to recover quickly and respond positively to changing market

conditions. These abilities have resulted in the emergence of a leaner, more efficient Group with a much broader mix of business in its traditional areas of strength.

'I am confident our people will build on these strengths in the coming year,' he concluded. ■

New joint ventures for Leighton Properties in the USA

Leighton Realty, Inc. which is active in California's real estate market, has just announced its latest joint venture development project; an industrial development about 60 kilometres inland from San Francisco.

Leighton Realty, Inc. and The Koll Company has purchased Quarry Business Park, a 7700 square metre light industrial office complex. Quarry Park, which is described as a 'distressed and undermanaged complex', will be renovated and then aggressively marketed to sell within the next two to three years.

Founded in 1962, The Koll Company is recognised as one of the

West Coast's leading real estate development, asset management and property management firms. Currently it has in inventory and under construction a commercial and industrial portfolio totalling about 2.5 million square metres, with an estimated value of more than US\$2.7 billion.

The Quarry Business Park, is ideally located in the unique Tri-Valley area which covers the cities of Pleasanton, Livermore, Dublin, San Ramon, Danville and Alamo. It is rapidly changing from a predominantly residential community to a major office and industrial employment centre.

The business park, which features extensive street frontage

and abundant landscaping, is located in the Valley Business Park, a 60-acre master-planned business park in Pleasanton.

Positioned between two heavily traversed freeways, Interstates 580 and 680, it has been designed for the types of industrial and commercial companies which provide support services to the major corporations now moving into the area.

Courtney L. Seepie, Leighton Realty's executive vice president, said that the development has 'significant upside potential', and that it established for Leighton a partnership with one of the most respected property developers in the United States. ■



(continued from page 5)

Courtney Seepie also announced that the group's subsidiary in Northern California, Leighton Homes Inc. had entered into a new \$26 million housing joint venture with the highly respected homebuilders, Vermillion Group Inc of San Ramon. He said that California was one of the best housing markets in the world, with strong continuing demand.

The partnership will develop the remaining 95 condominium residences in the award-winning Lakemont development at Canyon Lakes Country Club in San Ramon.

Recently the Mediterranean-styled Lakemont was declared by The Urban Land Institute to be one of the outstanding multi-family projects in the USA. Also, a portion of a new book on development, which will be used internationally by architects, city planners and engineers will be dedicated to Lakemont.

Lakemont was also awarded first place honours for architectural design in the 1988 MAME Awards by the Building Industry Association. It won awards for attached projects both under and over 1,500 square feet.

The project, which is located in the rapidly growing East Bay area of San Francisco sold more than 100 units in its initial phases.

The area shows a great deal of



Discussing home sales strategies at Lakemont are (left to right): Courtney Seepie (executive vice-president Leighton Homes, Inc.), Paul Smith (sales manager, Vermillion), Graham Stevens (chief financial officer Leighton Homes, Inc.)

potential for residential development as, during the last few years, it has seen significant new business park developments and corporate relocations, which have resulted in a large increase in employment.

Construction of the model complex and production units is progressing on schedule with initial closings to take place in the coming months. Homes at Lakemont are priced from \$165,000 to \$295,000. ■

Extensions to BP computer centre

Leighton has renewed its association with BP Australia with a recently awarded contract to refurbish a two storey building in Albert Road, Melbourne.

The new project follows a major fitout undertaken by Leighton on the energy group's computer centre in Melbourne, which was completed within a very tight time-scale in 1985.

The refurbishment which is now being undertaken is worth close to \$1,000,000 and involves work

on a building which will be used by BP Australia as an extension of its computer centre.

The contract includes extensive updating of the mechanical and electrical services, partitions, ceiling and wall and floor finishes.

Project manager Allan Spencer and building foreman Con Harrington have achieved hand over of the first floor ahead of schedule and are focusing on completion of the project in November. ■

Leighton's original fitout



Leighton to provide control facilities for new highway in Hong Kong

Leighton is again playing a key role in the development of the Junk Bay New Town in Hong Kong and has recently been awarded another contract for the construction of its essential services.

Leighton Asia has been awarded a HK\$69,500,000 contract by the Hong Kong Government to construct the control facilities and other infrastructure for the twin tunnels being driven through the hills of Kowloon to provide access to the new town.

This is the second contract to be awarded to Leighton in this area following the successful installation of the main sewage outfall pipe in November 1986.

The new contract involves the construction of the tunnel's control, mechanical and electrical buildings the approach roadworks and the toll plazas at both ends.

Also included is the installation of the tunnel tubes secondary lining – a high quality vitreous enamel panel system.



Alan Thorburn



The project team assembles on site near the tunnel's portals

The value of the contract is split evenly between building and civil engineering works, and the overall construction period is expected to be three years. The apparently long contract period is due to the schedule late handover of various areas of the site by other contractors. There is, however, a requirement to complete and handover the buildings within a period of 10 months from the contract start date.

Leighton, in association with the engineer, will also co-ordinate the work of the other contractors who will be installing their various services behind the tunnel wall panels.

The traditional site 'bi-san' (which literally means praying to God) was held one hot Thursday afternoon at the end of September at precisely 3:00pm to ensure the overall success of the project. Several roast pigs and chickens were consumed along with a small amount of beer.

The site team includes senior site agent C.S. Tsang, senior engineer T.C. Kan, project quantity surveyor T.C. Sin, building supervisor George Lau and M&E co-ordinator Ronnie Liu. They are assisted by Alan Thorburn and Dean Barber. ■

Leighton Newsletter is published by the Technical Services Group of Leighton Holdings Limited at 472 Pacific Highway, St Leonards, NSW 2065, Australia. The Editor, Jackie Malouf, welcomes staff editorial contributions accompanied by good-quality photographs.

Light rail project in both budget...and

Three years ago, the Leighton MTA Consortium was awarded the turnkey contract for the design, construction and commissioning of a complete light rail system running between Tuen Mun and Yuen Long in Hong Kong.

This A\$200 million turnkey contract undertaken for the Kowloon-Canton Railway Corporation (KCRC) was completed on budget just prior to the date set by the client three years earlier - 8.8.88, which is a very auspicious date for Chinese people. The project involved a very high level of services and equipment being supplied from Australia. It particularly benefited the heavy engineering sector, requiring the design and construction of 70 light rail vehicles which were manufactured for the joint venture by Comeng.

The LRT, which was won by Leighton-MTA in the face of very strong international competition involved some 23 kilometres of double trackwork, building more than 40 stations and a maintenance depot, establishing the power supply system, supplying all of the rolling stock, communications systems, workshop equipment and the ticketing and fare collection system.

Apart from the design, construction and commissioning the consortium also trained the operators to both run and maintain the system.

The new system, which serves a fast developing region of the New Territories can carry up to 25,000 passengers an hour.

The first three routes went into revenue operating service in mid-September after three days of free rides for the public. According to Leighton-MTA project manager Dudley Snell, the system was 'packed in true Hong Kong style' on its inaugural day.

'The KCRC ran a normal Sunday timetable, but the number of people who came from outside the area just to try out the new system took us all by surprise,' he said.

'The KCRC made strenuous efforts to educate pedestrians and drivers of other road vehicles on the potential interface problems at the many intersections and crossings.

The LRT has 70 Australian-made vehicles

Automatic ticket vending at the Town Centre Station - one of 40 stations on the system

It mounted a six weeks long public awareness campaign largely through television commercials and handouts'.

The official opening of the Pier Head Terminus was carried out by Princess Anne, who was on her way to attend the Olympic Games in Seoul. Prior to this time, on 7th August, a low key celebration had been held to mark the handing over and the achievement of completion on time and within budget.

Many of the Leighton-MTA team members who attended the ceremony had been with the project since its inception, three years ago. Mr H.M.G. Forsgate C.B.E., J.P., the chairman of the KCRC,

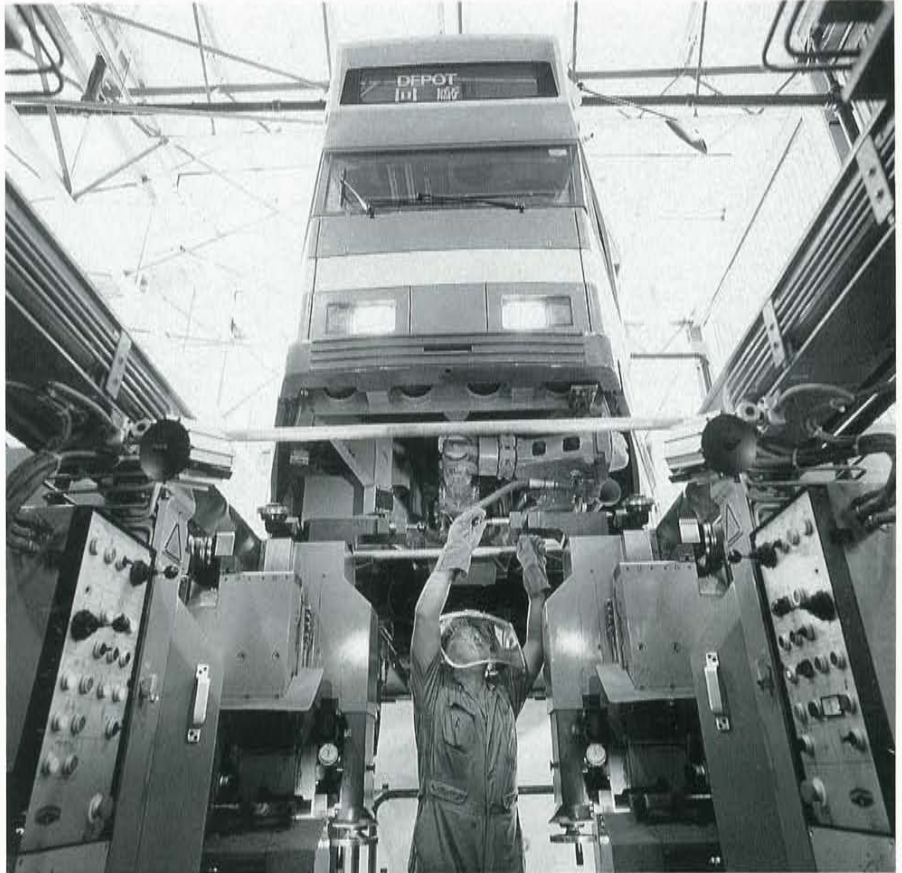


Hong Kong meets lucky target date

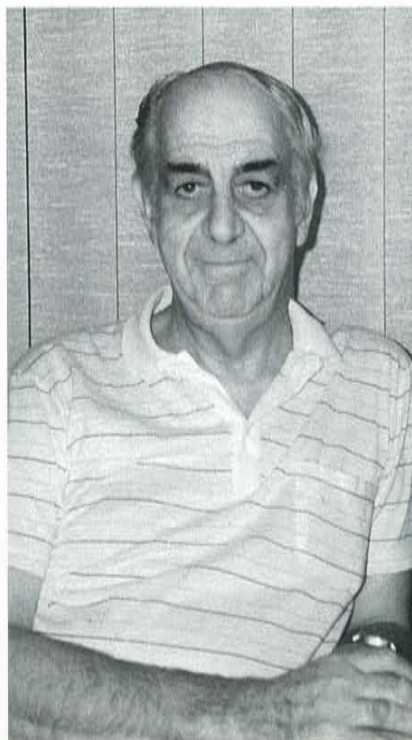
praised the Leighton MTA consortium for completing the project on programme and within budget.

Deputy project manager, Jim Holt, who was responsible for ensuring that all depot facilities and track-work were completed on time, has now taken on a new challenge at the City Polytechnic site.

In keeping with the turnkey nature of the project, all outstanding contractual issues were resolved before the physical completion of the project thanks to the co-ordination efforts of contract man Richard Whittington and programs manager John Latter.



State-of-the-art maintenance facilities have been provided



Harry Helmer, Bob Miles and a team of experts from MTA in Melbourne were largely responsible for the successful commissioning phase. Comeng of Victoria successfully delivered all 70 Light Rail Vehicles on time to Hong Kong, although their contingency planning included switching 45% of their production to Brisbane. Ten major retrofits were undertaken in Hong Kong before the vehicles were put into service and 24 technicians were flown in to carry out round the clock remedial work during the last eight weeks of the contract. ▶

Dudley Snell



(continued from page 9)

Bob Miles, the consortium's communication and control expert, will remain on site for another year, improving and debugging the electronic signals and control systems provided.

Together with all the construction and commissioning activities, a major training exercise has also been undertaken by Leighton-MTA. Directed by Andrew McLean and Phil Dawe of MTA more than 200 KCRC staff, from director to driver, have been put through various training programme. MTA's expertise proved invaluable and culminated in one of MTA's managers, Dennis Griffiths, being seconded to KCRC as operations manager.

The completion of the light rail transit system continues a long period of association for Leighton Asia with the Tuen Mun area. The company came to Tuen Mun to reclaim the land, then it laid much of the drainage and trunk sewers, built seawalls and highway interchanges. Currently Leighton Asia is working in Tuen Mun on the San Wai Court housing development. ■

The sophisticated control facilities keep track of all vehicles

Members of the Leighton-MTA team assemble for a commemorative photograph





Casting basin ready for massive Sydney Harbour tunnel segments

Work on the construction of Sydney's Harbour Tunnel project can enter a new phase now that Leighton Contractors Pty Ltd has completed construction of the casting basin at Port Kembla near Wollongong. The \$11,500,000 casting basin was built to allow construction of the eight 25,000 tonne immersed marine tunnel segments which will form the tunnel.

The works required a dry-dock some 510 metres by 250 metres in size and 14.5 metres deep to be excavated immediately adjacent to the Inner Harbour of Port Kembla.

More than 900,000 cubic metres of sand, marine mud and clay was hauled from the basin site to reclaim nearby lagoons and swamps and to provide an additional 25 hectares of space for port development works.

This work was undertaken by a plant fleet which included:

- Three D10 dozers
- D11, D9L and D8L dozers
- Three D7 and D6 swamp dozers
- Eight 651E and 631D scrapers
- Two 65 tonne excavators
- Three 45 tonne excavators
- Six 35 tonne DJB 6x4 trucks
- Twelve 25 tonne 6x6 and 4x4 trucks
- Various graders and rollers

To protect the very soft batters and floor and to provide a working surface to construct the IMT unit, 300,000 tonnes of slag was placed on the floor and batters at a rate of up to 7500 tonnes per day.

Groundwater levels and pressures in the excavation, which was nine metres below sea level, were controlled by an elaborate vacuum dewatering system. Some 390 depressurisation wells and 6,500 metres of trench drains up to 2.5 metres deep fed an extensive pumping system which removed ground and storm water in the lower levels of the excavation.

Additionally, 810 sheet piles with a total length of 12,700 metres were driven to construct the 'gates' for the dry-dock and prevent the excavation being flooded from the adjacent harbour.

The 30 weeks project suffered more than seven weeks of wet weather but was still completed in 29 weeks. Substantial redesigns of the basin floor required an additional three weeks to complete.

An excellent workforce of 52 employees was recruited locally and interstate. Less than ten per cent of the work was let to sub-contractors. There were no industrial stoppages.

Project staff included Dennis Brewer, Mark Scorer, Pat Doyle, Murray Simpson, Ivan Karaban, Max Huxley, Mick Luchetti, Pat Connolly, Mick Hook, Alan Seque and Colin Karlson. ■

Senior man moves to Asia

Bill Wild has been appointed as general manager, construction and a director of Leighton Asia in Hong Kong.

Bill's previous position was with Thiess in Brisbane where he was general manager, mining and waste services.

In addition to his strong construction background, he brings with him a knowledge of waste management and environmental engineering, which is very relevant to the current needs of Asia's developing cities.

John McNaught, who has spent the past seven years as construction director for Leighton in Hong



Kong, has returned to Australia for a well earned rest and, as he says, 'to sit on the beach and drink beer.' ■

Hospital's reconstruction completed without disruption to operations

Work on the construction of new surgical and support facilities at Greenslopes

Repatriation General Hospital in Brisbane has now been successfully completed by Leighton Contractors Pty Ltd despite the need for construction teams to work without hindering the day to day running of the hospital.

Also, being a medical facility, the work had to be carried out as speedily, efficiently and as noiselessly as possible, yet to extremely high standards.

Numerous temporary facilities had to be set up by Leighton and maintained as construction was proceeding around the operating theatres and occupied areas prior to relocation into the new buildings. These buildings total around 9,500 square metres in area.

The programme, which took just over two years to complete, involved demolishing some of the hospital's buildings, constructing two new multi-storey buildings, linkways and roadworks, and also undertaking landscape gardening and the upgrading of some of the existing facilities.

One of the new buildings houses six operating theatres, suites and

associated facilities, a gastroenterology unit, an intensive therapy unit with 12 beds and life support equipment, a central sterile supply department and a number of community facilities.

The second new building houses an accident and emergency centre, with ambulance bay and new facilities for the Queensland University's clinical sciences department.

These buildings have finally replaced the previous timber

framed 'temporary' buildings constructed during the second world war and which were still being used.

Staff working on the project included Construction Manager Graeme Fitzsimmons, Project Manager Mark Hendrickson, Administrator Colin Browne, Clerk Terry Williams, General Foreman Kevin Keegan and Foremen Mark Brockhurst and Brian Latham. ■



Pipeline heads across Texas prairie country

In the United States, Green Construction is well advanced on a US\$21 million joint venture contract to construct a major pipeline in Texas.

The project, known as the Richland Creek Pipeline, involves the construction of about 30 kilometres of 2.4 metre diameter concrete pressure pipe through undulating cottonfield and prairie country.

Located near Corsicana, which is about 90 kilometres south-east of Dallas, the contract is the final stage of a 120 kilometre long pipeline which will carry water from the newly constructed Richland-Chambers Reservoir to the city of Fort Worth – the sister city of Dallas.

Locally, Fort Worth is affectionately known as 'Cow Town', a name which is probably a legacy of the days when many cattle drives ended there. The numerous saloons near the stockyards satisfied the needs of the thirsty cowboys who invaded the town at the end of each ride.

On this day the only seating around the main bar of the Stockyards Hotel are genuine saddles mounted on pedestals.

The specialised pipe used in this project is unique to the USA. Called prestressed embedded cylinder concrete pipe, it consists of a thin walled steel cylinder cast within a concrete pipe which, after steam curing, is spirally wrapped with tensioned prestressing wire.

Both wire tension and pitch can be varied as required to accommodate the various design pressure and loading parameters. The prestressing strands are protected by a cement mortar coating which is sprayed onto the pipe while it is spinning.

The pipes are manufactured in six metre lengths, each weighing more than 73,000 kilograms. They

are manufactured in Dallas and transported to the site by road.

Work on the project is well advanced and all the pipe has been laid. Indicative of the rate at which pipe is laid is the fact that the project team broke the local pipe laying record with an outstanding 56 pipes in one day.

Five tunnel crossings which carry the pipeline under various highways and railroads have been constructed under the contract.

The project is managed by Green's joint venture partner, Joe Sieben.

He is assisted on site by project superintendent Greg Dambold project engineer Tom Bussell, pipe superintendent Chuck Rose and field office manager Catherine McCrory. The operations manager in Dallas is Joe Trio.

The pipeline is being constructed for the Tarrant County Water Control District and it is supervised by consulting engineers, Freese & Nichols, Inc of Fort Worth. Completion is scheduled for November this year. ■



Compliments flow at River Murray club project as 'savings' are shared

Rich River Golf Club sits in the midst of the lush fairways and greens of a 36 hole golf course just north of the Murray River at Echuca. It has traded exceptionally well in the less than 10 years since it was founded so well that, it has just completed its fourth major expansion.

Apart from dressing up the front of the club with a new 30 metre wide foyer and administration area, Rich River has little to show the casual visitor for its latest expenditure of some \$2.6 million. However, every dollar of that investment has been carefully spent to equip the club properly for the growth that is predicted to take place in the years ahead.

The latest building activities, which were undertaken by Leighton Contractors Pty Ltd as a construction management contract, have provided the club with new stores, improved liquor handling facilities, better security, two new goods, lifts, an automatic emergency power system, a large and modern administration area, staff dining room and other improvements generally unseen by the members.

Leighton's project manager Alan Sims said that this work was an important element in a master plan prepared by architects Pereira Wood to ensure that the club had efficient services and systems in place for any future building developments.

Using a construction management contract allowed Leighton to maximise the number of local suppliers and contractors employed on the project, providing a significant boost to the building industry in the region.

Leighton's construction management contract provided the club with a warranted target price which included a 50-50 cost saving sharing agreement. It also permitted the use of fast track construction techniques, which enabled a start to be made on the actual construction while the details of the design were still being finalised.

The autonomy of Leighton's project team on site was an important element in the decision-making process, facilitating rapid and direct communication with the club at all times.

The secretary manager of the club, Ron Slym, said that he had been extremely impressed by Leighton's approach to its work under this type of contract and the significant benefits which had flowed through to the club.

'The standard of work was excellent. The job was finished ahead of the scheduled time and below its budget'.

'Because of the contract under which we worked, Leighton and the club shared the savings, which were significant enough for us to pay for the majority of some additional work we decided to undertake after the initial contract was signed.'

'The construction management system also allowed a great deal of flexibility in design. It worked extremely well for us and I can see no reason why we would not use it again.'

Ron Slym said that an important element of project control was the close co-operation between the managements of Leighton and the club. This was maintained mainly at direct personal level.

'Throughout the seven months of construction, we held weekly formal meetings and I carefully watched both the rate of progress and the way that the money was spent.'

'We kept all of the members of the club fully informed with a weekly report on current building activities and what we expected to achieve the following weeks. We made it a policy never to surprise our members by the changes being made advising them of even the most minor details.'

Ron Slym said that, as a result, the members had been most complimentary about the way that the project had been undertaken. ■



Secretary-Manager Ron Slym (left) outside the club with Leighton's project manager Alan Sims

Reciprocal business in Melbourne

For the past ten years L.M. Ericsson Pty Ltd has supplied a series of communication systems to Leighton Contractors in Victoria. Now, reversing the trend, Leighton Contractors has been selected to construct the company's new Australian Electronic Development centre building at its premises at Broadmeadows. The \$2,300,000 building will

comprise a two storey, combined in-situ and pre-cast concrete structure with a concrete slab and metal deck roof. Each floor has an area of about 900 square metres and will be serviced by one lift. The facade features full-height exposed aggregate panels and anodised aluminium windows with horizontal aluminium louvred sun hoods at each level.

Designed by the Irwin Alsop Group, the building will have a high standard of finish internally in the lecture rooms, offices, library, auditorium, kitchen and canteen. A feature of the building is the semi-circular entrance and circular stairwells.



Leighton's receptionist Viki Reed at the company's Ericsson switchboard in Melbourne

Work, which commenced this month, is programmed for completion by June next year.

A 52-vehicle bitumenised carpark will be constructed following the installation of underground services.

The Leighton project team comprising Allan Spencer (project manager) and Ray Bacon (building foreman) will again be

working with the Irwin Alsop Group following the recent completion of the Metropolitan Fire Brigade project.

Ericsson plant maintenance manager Barry Smith has been appointed as the proprietor's representative for the project. ■

Leighton builds Shell's largest retail project

Leighton's branch in Canberra has been awarded a contract to undertake a major remodelling of a transport terminal in South Gundagai for the Shell Company of Australia.

This contract renews a long association with the region for Leighton, which has completed a number of road construction projects in the area for the NSW Department of Main Roads.

The new project, worth about \$2,200,000 involves the staged demolition of the existing

terminal facility and the construction of a new transport terminal comprising a Shell Shop and canopies serving both motor spirit and distillate fuels.

A new 'Tuckers' restaurant and extensive truck and carparking areas will also be constructed.

This project is the largest retail construction project to be undertaken by Shell to date. The design documentation is being produced by Shell 'in house'.

Although the terminal is due for completion in February next year, the project team is endeavouring

to have it operational before Christmas so that Shell can take full advantage of the Christmas trade for both the new fuel and restaurant facilities.

The project team comprises Alan Findlater (project manager), Peter Nikolic (site manager), Lachlan Marks (project engineer), Tony Peters (site administrator) and James Hudson (foreman). ■

Process Group's coup leads to gold contracts

Leighton's Process Group has achieved a very much heightened image in the gold industry in recent years due to its success in obtaining the services of George Potter as a consultant.

George Potter is widely regarded as the 'guru' of metallurgy in the gold industry, and is recognised internationally as a leading expert on gold extraction and processing.

In the past few weeks he has been the keynote speaker at the Heap Leach Conference in Cairns, which was attended by more than 200 specialists in this field.

Heap Leaching is the most advanced method of recovering gold from low grade ores. It is likely to become increasingly important in Australia because of its low capital cost and the anticipated growth in reserves of low grade ores in this country.

Dr Malcolm Jansen, manager business development, Process Engineering Group, said that through his association with Leighton, George Potter had played a significant role in obtaining consulting contracts for the company.

'Through his expertise, we have been able to provide consulting services to such major gold miners as Pancontinental Mining, Pan Ocean Resources the Mt Morgan Joint Venture, Elders Resources and Kidston Gold. We are also providing consulting services to some of the smaller gold mines including the Mt Martin Gold Mines,' he said.

Speaking at the Heap Leach Conference, George Potter drew on his experience in metallurgical investigation, process plant design operations assistance and start up of more than 20 major gold processing projects, many of which are benchmarks in the industry today.

He is pictured at the conference in Cairns (left) with Hans Von Michaelis, president of Randol International, the organising body of the highly respected Randol

Gold Symposia. The next conference to be held in Perth at the end of this month is the first to be

held outside the United States and will attract participants from around the world.



Merrill Creek wins award for joint venture

A joint venture of Leighton and Green Construction has been recognised in the United States for its concept originality and application of structural concrete on a phase of construction on the Merrill Creek Dam in New Jersey.

The consortium was recognised by a special award for engineering technology for the excellence of its performance on the inlet/outlet tower of the US\$90 million dam, which was completed last year.

The presentation to Leighton and Green was made at an awards dinner by the New Jersey Ready-Mixed Concrete Association,

the New Jersey Chapter of the American Concrete Institute and the New Jersey Concrete and Aggregate Association.

Standing well over 60 metres high, the slipformed inlet/outlet structure is one of three main construction packages awarded to Leighton and Green by the group of several utilities companies which own the power stations along the Delaware River.

The other contracts awarded to Leighton and Green were for the 86 metre high zoned earthfill dam and three cycles, and for the pump station which is located about five kilometres from the side of the dam. ■