

# Lake Eppalock

## Recreation Guide



# Welcome to Lake Eppalock

Lake Eppalock, in the heart of the Goldfields, is central Victoria's largest water storage.

It has excellent facilities for day visitors and holiday makers with four caravan parks, several picnic areas with electric barbeques and a kiosk.

Lake Eppalock is just twenty minutes drive from Heathcote, thirty minutes from the thriving city of Bendigo and ninety minutes from Melbourne.



*Did you know?*

Lake Eppalock was completed in 1964. Its curved embankment is 700 metres long, stands 47 metres high and contains more than 800,000 cubic metres of earth and rock.

Like to know more about Lake Eppalock?  
Visit us at [www.g-mwater.com.au](http://www.g-mwater.com.au)

## G-MW & Dams

Lake Eppalock is just one of G-MW's 16 water storages scattered across a region the size of Tasmania.

G-MW is not only responsible for dams - it also looks after boating and recreational activities on and around the water. G-MW is also a large land manager and the largest inland boating authority in Victoria!

As part of managing these responsibilities, G-MW develops a Land and On-Water Management Plan for each storage - including Lake Eppalock. The Plans focus on what people value and enjoy about G-MW's water storages - from boat ramps to picnic tables, water sports to wildlife habitat.

To find out more about the Lake Eppalock Land and On-Water Management Plan visit:

[www.g-mwater.com.au/storages](http://www.g-mwater.com.au/storages)

## Dam Operations

When full, Lake Eppalock holds 304,651 megalitres and in places is over 30 metres deep.

G-MW controls 82% and Coliban Water controls 18% of the water in Lake Eppalock.

As well as supplying raw water for urban treatment, Lake Eppalock also stores water for irrigation along the Campaspe River downstream.

Water from Lake Eppalock is used to supplement the Waranga Western Channel that supplies the Rochester and Pyramid-Boort irrigation areas.

Lake Eppalock has three spillways to control water releases and flows - one concreted spillway and two grassed spillways.

## Fishing



Lake Eppalock is home to a healthy mix of Golden Perch, Redfin, Murray Cod and Trout and has a good balance of deep and shallow water:

The lake provides excellent fishing for Redfin (especially between December and May) with Derrinal and Kimbolton pools to the north being popular fishing spots.

Also try the mouth of the Coliban and Campaspe Rivers for Murray Cod and Golden Perch.

For the latest information on fishing at Lake Eppalock contact DPI Fisheries Victoria.

## Boating



Lake Eppalock is the "sailing centre of Central Victoria" and the Bendigo Yacht Club holds regular events.

The lake is also a popular destination for waterskiing and power boat racing.

A number of public boat ramps are located around the lake. See the Boating Map overleaf for locations.

Normal boating operations apply when water levels are above 180 AHD. Low water level hazards include submerged tree stumps and shallow water. Check signage at boat ramps for further information.

Lake Eppalock is  
the 6th largest lake  
in Victoria.


GMW is  
Australia's largest  
rural water corporation  
managing around 70% of  
Victoria's stored water  
resources.

## Relax & Unwind...

Lake Eppalock is a water playground for all ages. This family-friendly destination offers peaceful areas for bushwalking, birdwatching, fishing and sailing. For the more adventurous, power boat racing and waterskiing are popular sporting activities. A number of club sites are located around the lake offering private accommodation and other facilities for members.

### Accommodation:

Lakeside caravan and holiday parks, B&Bs and holiday houses are available all year round. For more information contact the Bendigo Visitor Information Centre on 1800 813 153 or visit [www.bendigotourism.com](http://www.bendigotourism.com)

A man in a purple life vest is waterskiing on a lake. He is leaning forward, holding a blue tow rope. The water is splashing around his skis. In the background, there are green hills under a clear blue sky. The image is overlaid with a semi-transparent white box containing text and a blue circular graphic with text.

*Coliban River,  
Campaspe River,  
Wild Duck Creek  
and Mt Ida/Mclvor  
Creek run into Lake  
Eppalock.*

# Who should I contact about...

## *Emergencies:*

Police, Fire, Ambulance  
000

## *Fishing information:*

DPI Fisheries Victoria  
136 186  
Please refer to the  
Victorian Recreational  
Fishing Guide available at  
[www.dpi.vic.gov.au/fisheries](http://www.dpi.vic.gov.au/fisheries)

## *Weather reports:*

Bureau of Meteorology  
[www.bom.gov.au](http://www.bom.gov.au)

## *Boating information:*

Transport Safety Victoria  
1800 223 022  
Please refer to the  
Victorian Recreational  
Boating Safety Handbook  
available at [www.sportsafety.vic.gov.au](http://www.sportsafety.vic.gov.au)



## *Environmental incident - pollution, spills, noise:*

EPA Victoria  
1300 372 842

*G-MW storages are open and easily accessible to the general public. They provide wonderful recreation opportunities, however their primary purpose is for storage and delivery of irrigation water to G-MW customers. Water levels vary over the irrigation season, rising with rainfall and falling as water is released for delivery.*



Goulburn-Murray Water  
PO Box 165  
Tatura Vic 3616

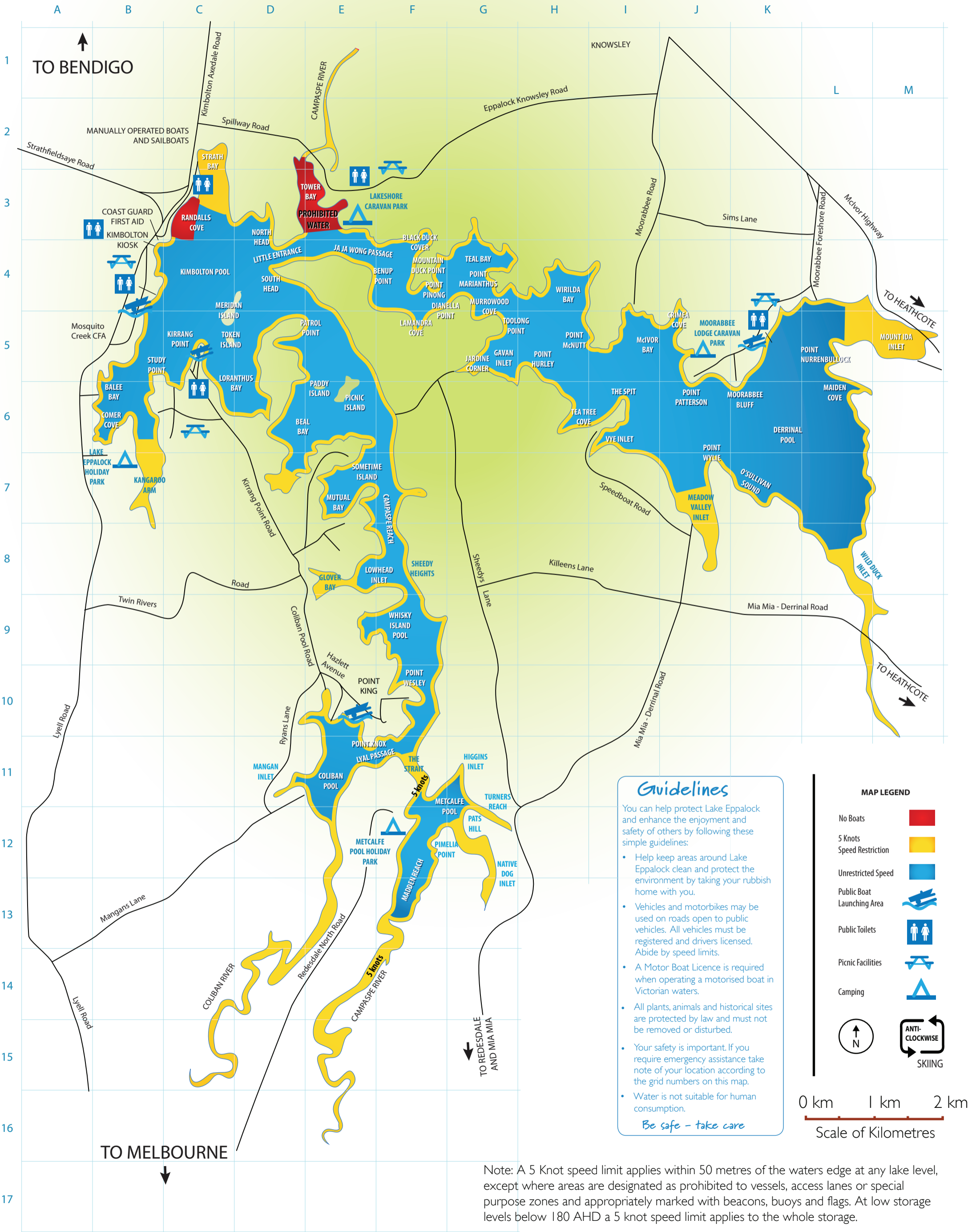
Tel (03) 5826 3500  
[www.g-mwater.com.au](http://www.g-mwater.com.au)

Copyright G-MW. All rights reserved. Prepared February 2012.

# Lake Eppalock Boating & Facilities Map

Boats containing sleeping accommodation and/or toilets are prohibited on Lake Eppalock.

Parasailing is prohibited without prior written consent.



### Guidelines

You can help protect Lake Eppalock and enhance the enjoyment and safety of others by following these simple guidelines:

- Help keep areas around Lake Eppalock clean and protect the environment by taking your rubbish home with you.
- Vehicles and motorbikes may be used on roads open to public vehicles. All vehicles must be registered and drivers licensed. Abide by speed limits.
- A Motor Boat Licence is required when operating a motorised boat in Victorian waters.
- All plants, animals and historical sites are protected by law and must not be removed or disturbed.
- Your safety is important. If you require emergency assistance take note of your location according to the grid numbers on this map.
- Water is not suitable for human consumption.

*Be safe - take care*

### MAP LEGEND

- No Boats (Red box)
- 5 Knots Speed Restriction (Yellow box)
- Unrestricted Speed (Blue box)
- Public Boat Launching Area (Blue boat icon)
- Public Toilets (Blue toilet icon)
- Picnic Facilities (Blue picnic table icon)
- Camping (Blue tent icon)
- North Arrow (Circle with 'N' and arrow)
- ANTI-CLOCKWISE SKIING (Circular arrow icon)

0 km 1 km 2 km  
Scale of Kilometres

Note: A 5 Knot speed limit applies within 50 metres of the waters edge at any lake level, except where areas are designated as prohibited to vessels, access lanes or special purpose zones and appropriately marked with beacons, buoys and flags. At low storage levels below 180 AHD a 5 knot speed limit applies to the whole storage.