

## *Major parties remain gripped in a three-way tie*

*Nanos National Nightly Tracking, Three day rolling average of 1,200 voters (September 10<sup>th</sup>, 11<sup>th</sup>, and 12<sup>th</sup>, 2015) released September 13<sup>th</sup>, 2015 (6am Eastern)*

THE GLOBE AND MAIL<sup>🍁</sup>

CTV  
NEWS

 **NANOS**



# At a glance

- **Ballot** – Nightly tracking continues to suggest that the federal election race remains quite tight. In the tracking completed Saturday the Conservatives were at 32%, the NDP at 31%, the Liberals at 31%, and the Green Party was at four per cent nationally.
- **The Regions** – The Conservatives lead in the Prairie provinces, while the NDP register as the most popular party in Quebec and BC. The Liberals have the highest support in Atlantic Canada. Of note, in the latest tracking the Ontario race is tightening up between the Conservatives and the Liberals.
- **Accessible Voters** – Asked which parties they would consider or not consider voting for in a series of independent questions, 50% of Canadians would consider voting NDP, 49% would consider voting Liberal, 41% would consider voting Conservative, 25% would consider voting BQ (QC only), and 23% of Canadians would consider voting Green.

Contact:

Nik Nanos, FMRIA

Ottawa: (613) 234-4666 x 237

[nnanos@nanosresearch.com](mailto:nnanos@nanosresearch.com)

Twitter: @niknanos



THE GLOBE AND MAIL



NANOS SURVEY

# Nanos Ballot Data Summary: Sept 10 - 12

## Ballot

A national dual-frame (land+cell) random telephone survey is conducted nightly by Nanos Research throughout the campaign using live agents. Each evening a new group of 400 eligible voters are interviewed. The daily tracking figures are based on a three-day rolling sample comprised of 1,200 interviews. To update the tracking a new day of interviewing is added and the oldest day dropped. The margin of error for a survey of 1,200 respondents is  $\pm 2.8$  percentage points, 19 times out of 20.

Contact: Nik Nanos  
(613) 234-4666 x 237  
nnanos@nanosresearch.com  
Twitter: @niknanos

Category order based on number of seats in the House of Commons



[www.nanosresearch.com](http://www.nanosresearch.com)

Ballot	Sept 12	Sept 11	1 Week Ago	1 Month Ago (Aug 8)	3 Months Ago (June 6)	1 Year Ago	12 Month High	12 Month Low
Conservative	31.7%	30.9%	28.5%	31.2%	29.7%	27.4%	33.0%	25.4%
NDP	30.8%	30.1%	30.4%	30.4%	31.6%	19.1%	32.9%	19.1%
Liberal	30.5%	31.7%	30.2%	28.6%	30.2%	42.5%	43.0%	26.8%
Green	4.1%	4.0%	5.8%	5.0%	4.0%	5.4%	7.7%	3.4%
Bloc	2.5%	2.8%	4.0%	4.2%	3.5%	4.1%	6.7%	2.5%
<i>Undecided</i>	9.2%	10.4%	13.5%	16.0%	14.6%	14.6%	21.5%	9.2%
<b>Party Consider</b>								
Conservative	40.8%	39.7%	38.9%	39.2%	40.5%	40.7%	44.7%	35.1%
NDP	50.3%	49.4%	50.2%	49.0%	51.7%	43.8%	52.5%	41.4%
Liberal	49.2%	49.8%	46.5%	46.1%	46.7%	57.2%	59.7%	42.9%
Green	22.8%	21.6%	26.9%	25.9%	25.4%	26.4%	30.5%	21.6%
Bloc	24.8%	23.4%	28.6%	30.1%	31.0%	32.2%	39.6%	23.4%

# National Ballot Sept 10 - 12

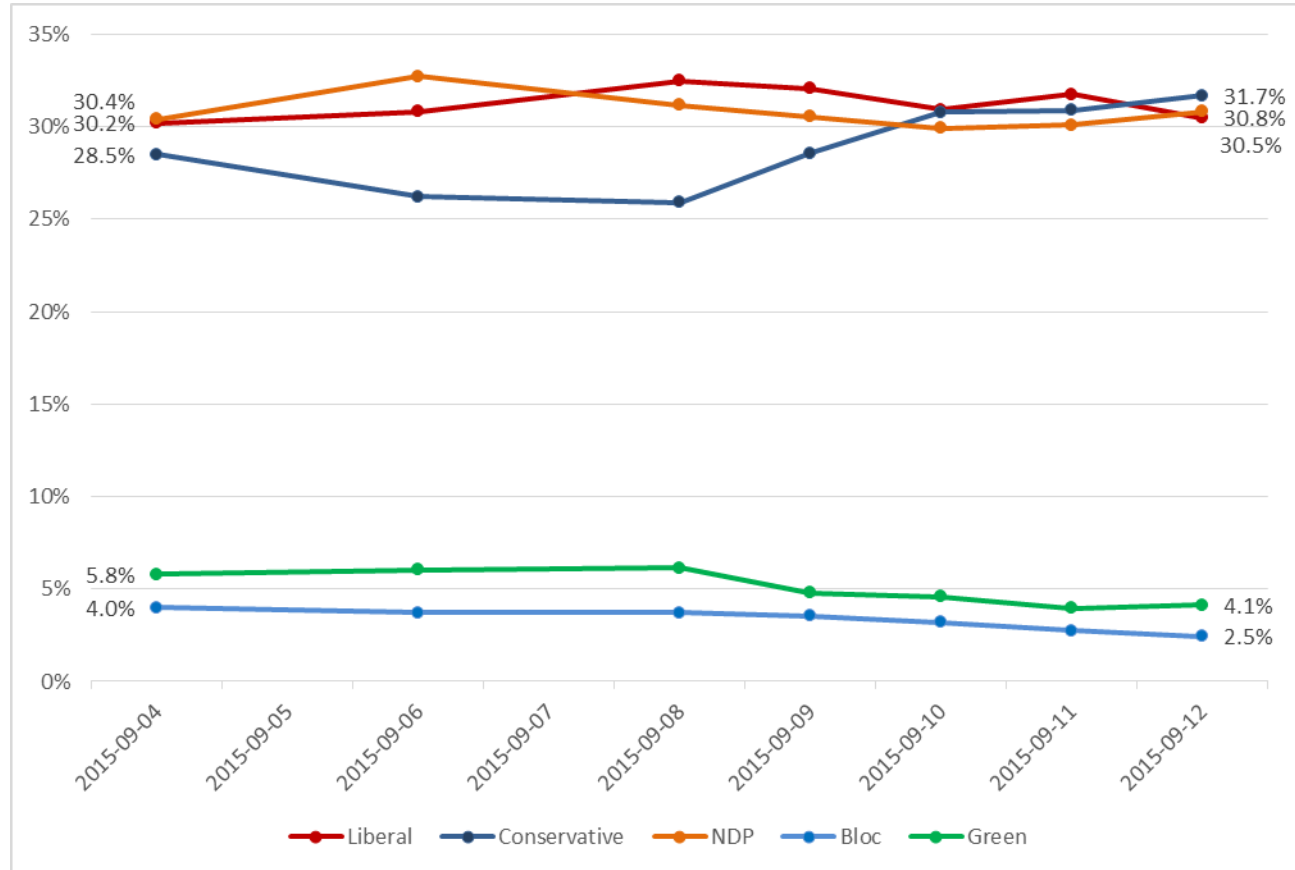
**Question:** If a FEDERAL election were held today, could you please rank your top two current local voting preferences? [First ranked response]

A national dual-frame (land+cell) random telephone survey is conducted nightly by Nanos Research throughout the campaign using live agents. Each evening a new group of 400 eligible voters are interviewed. The daily tracking figures are based on a three-day rolling sample comprised of 1,200 interviews. To update the tracking a new day of interviewing is added and the oldest day dropped. The margin of error 1,089 decided voters is  $\pm 3.0$  percentage points, 19 times out of 20.

Contact: Nik Nanos  
Ottawa: (613) 234-4666 x 237  
nnanos@nanosresearch.com  
Twitter: @niknanos



www.nanosresearch.com



# Anatomy of 2<sup>nd</sup> Choice Sept 10 - 12

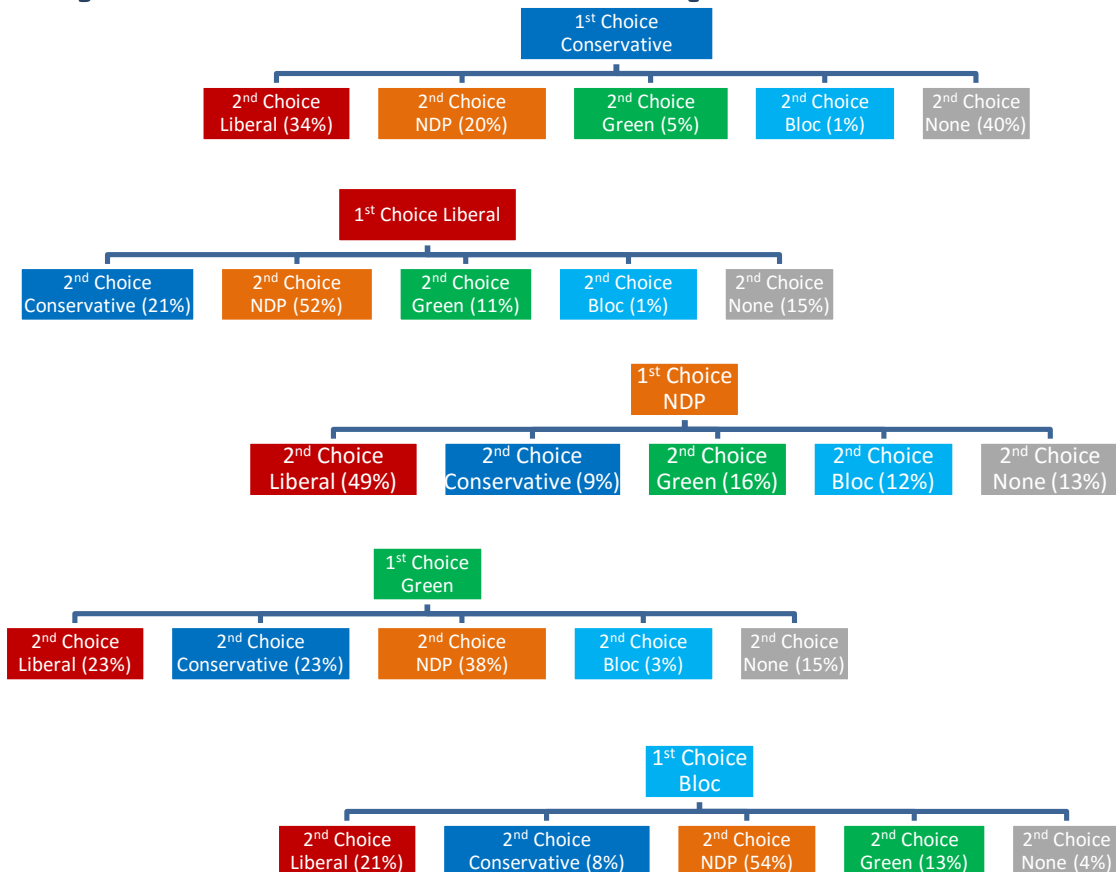
**Question:** If a FEDERAL election were held today, could you please rank your top two current local voting preferences? [First and second ranked response]

A national dual-frame (land+cell) random telephone survey is conducted nightly by Nanos Research throughout the campaign using live agents. Each evening a new group of 400 eligible voters are interviewed. The daily tracking figures are based on a three-day rolling sample comprised of 1,200 interviews. To update the tracking a new day of interviewing is added and the oldest day dropped. The margin of error for a survey of 1,200 respondents is  $\pm 2.8$  percentage points, 19 times out of 20. The margin of error will vary for subpopulations such as supporters for the respective parties.

Contact: Nik Nanos  
Ottawa: (613) 234-4666 x 237  
nnanos@nanosresearch.com  
Twitter: @niknanos



[www.nanosresearch.com](http://www.nanosresearch.com)



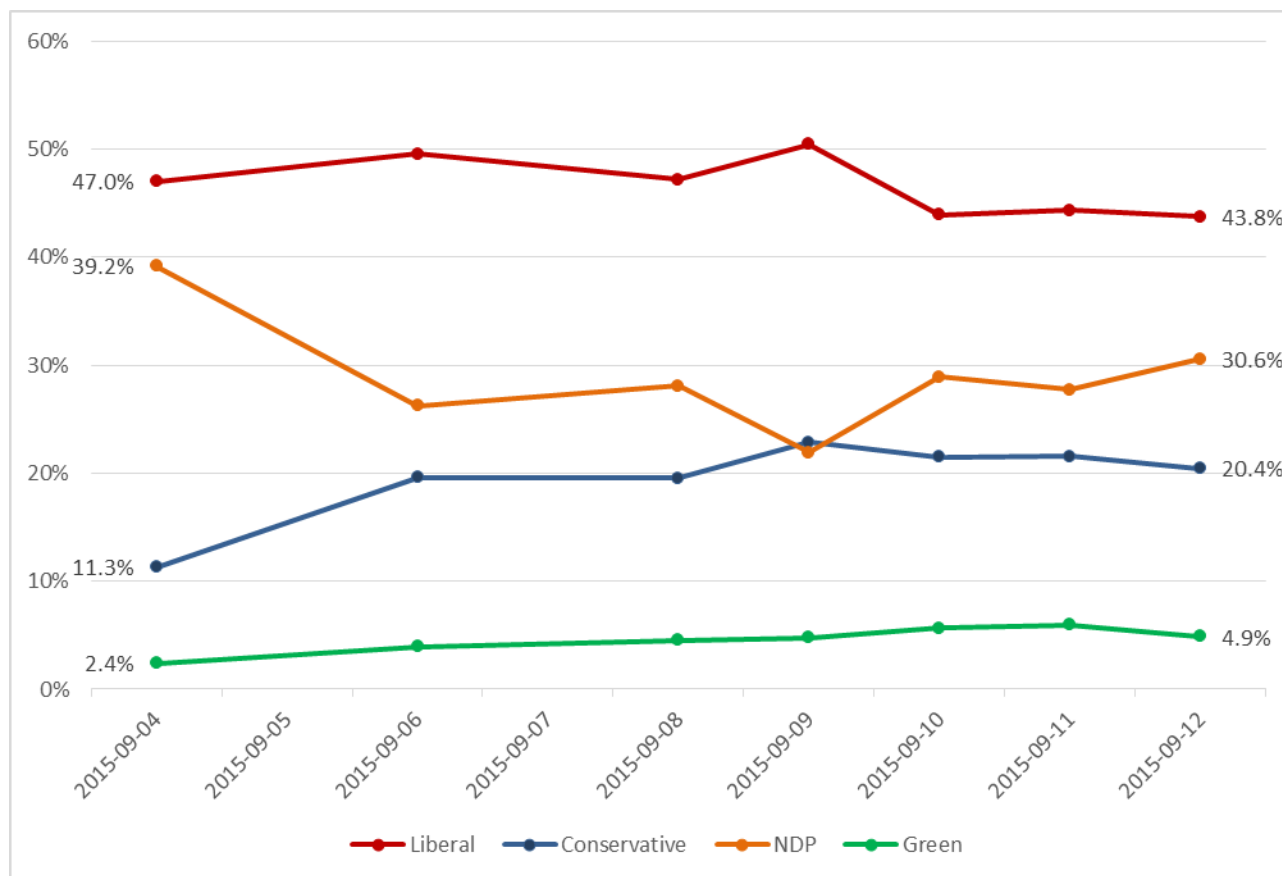
# Ballot Tracking – Atlantic Sept 10 - 12

**Question:** If a FEDERAL election were held today, could you please rank your top two current local voting preferences? [First ranked response] – Atlantic Only.

A national dual-frame (land+cell) random telephone survey is conducted nightly by Nanos Research throughout the campaign using live agents. Each evening a new group of 400 eligible voters are interviewed. The daily tracking figures are based on a three-day rolling sample comprised of 1,200 interviews.

To update the tracking a new day of interviewing is added and the oldest day dropped. The subsample for Atlantic Canada is based on 109 decided individuals. A sample of 109 respondents is accurate  $\pm 9.5$  percentage points, 19 times out of 20.

Contact: Nik Nanos  
Ottawa: (613) 234-4666 x 237  
nnanos@nanosresearch.com  
Twitter: @niknanos



[www.nanosresearch.com](http://www.nanosresearch.com)



THE GLOBE AND MAIL



# Ballot Tracking – Quebec Sept 10 - 12

**Question:** If a FEDERAL election were held today, could you please rank your top two current local voting preferences? [First ranked response] – Quebec Only.

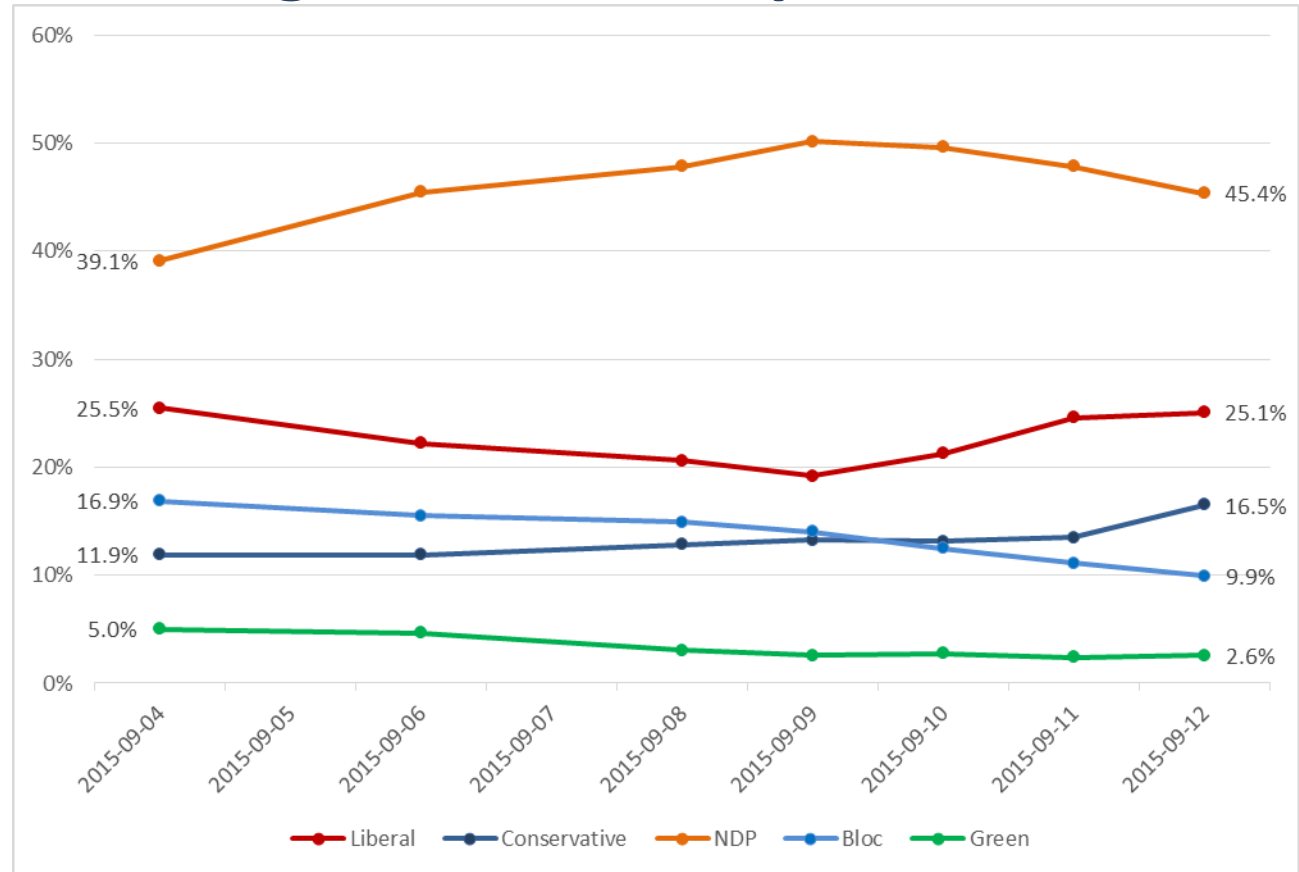
A national dual-frame (land+cell) random telephone survey is conducted nightly by Nanos Research throughout the campaign using live agents. Each evening a new group of 400 eligible voters are interviewed. The daily tracking figures are based on a three-day rolling sample comprised of 1,200 interviews.

To update the tracking a new day of interviewing is added and the oldest day dropped. The subsample for Quebec is based on 268 decided individuals. A sample of 268 respondents is accurate  $\pm 6.1$  percentage points, 19 times out of 20.

Contact: Nik Nanos  
Ottawa: (613) 234-4666 x 237  
nnanos@nanosresearch.com  
Twitter: @niknanos



www.nanosresearch.com



# Ballot Tracking – Ontario Sept 10 - 12

**Question:** If a FEDERAL election were held today, could you please rank your top two current local voting preferences? [First ranked response] – Ontario Only.

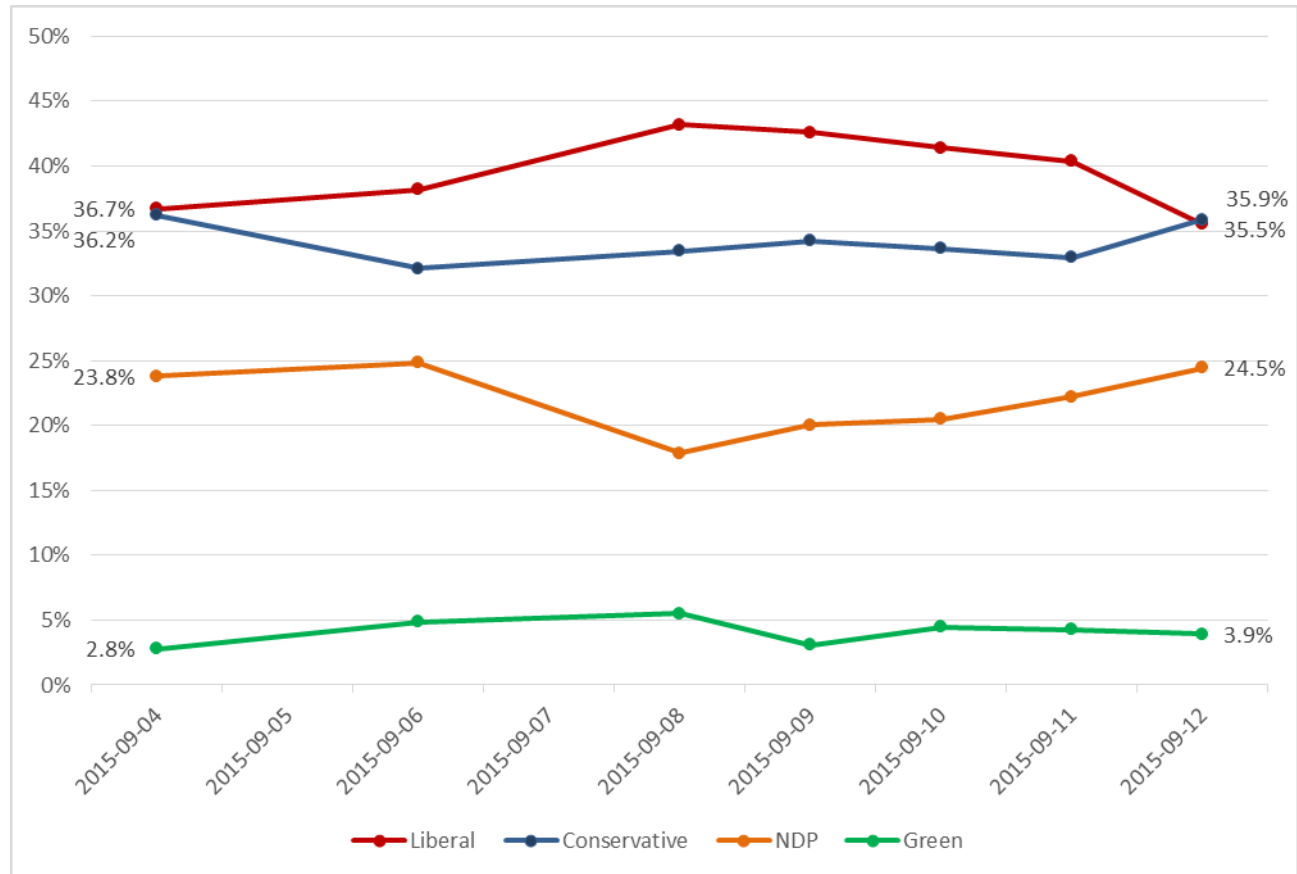
A national dual-frame (land+cell) random telephone survey is conducted nightly by Nanos Research throughout the campaign using live agents. Each evening a new group of 400 eligible voters are interviewed. The daily tracking figures are based on a three-day rolling sample comprised of 1,200 interviews.

To update the tracking a new day of interviewing is added and the oldest day dropped. The subsample for Ontario is based on 329 decided individuals. A sample of 329 respondents is accurate  $\pm 5.5$  percentage points, 19 times out of 20.

Contact: Nik Nanos  
Ottawa: (613) 234-4666 x 237  
nnanos@nanosresearch.com  
Twitter: @niknanos



[www.nanosresearch.com](http://www.nanosresearch.com)





# Ballot Tracking – Prairies Sept 10 - 12

**Question:** If a FEDERAL election were held today, could you please rank your top two current local voting preferences? [First ranked response] – Prairies (MB, SK, AB) Only.

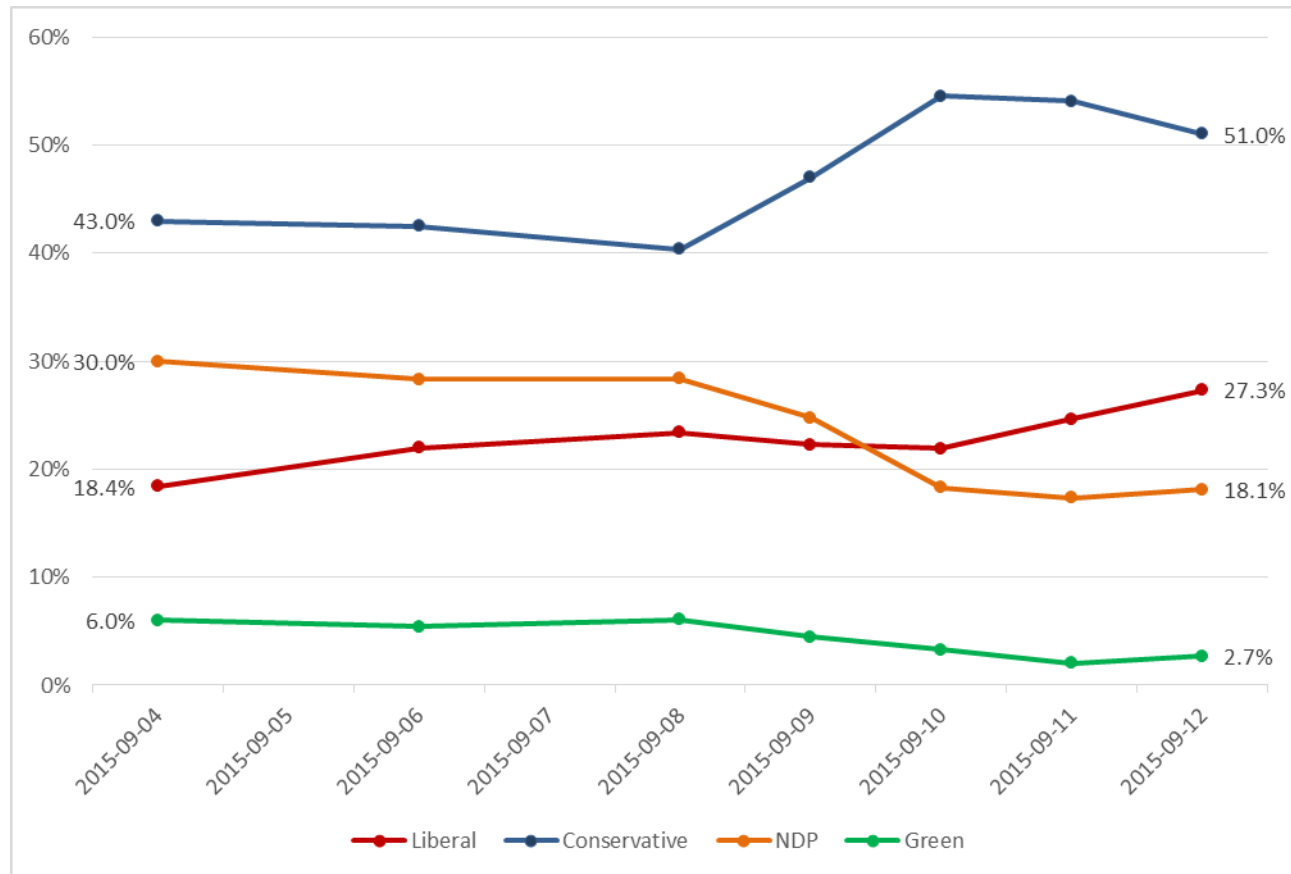
A national dual-frame (land+cell) random telephone survey is conducted nightly by Nanos Research throughout the campaign using live agents. Each evening a new group of 400 eligible voters are interviewed. The daily tracking figures are based on a three-day rolling sample comprised of 1,200 interviews.

To update the tracking a new day of interviewing is added and the oldest day dropped. The subsample for the Prairie is based on 221 decided individuals. A sample of 221 respondents is accurate  $\pm 6.7$  percentage points, 19 times out of 20.

Contact: Nik Nanos  
Ottawa: (613) 234-4666 x 237  
nnanos@nanosresearch.com  
Twitter: @niknanos



[www.nanosresearch.com](http://www.nanosresearch.com)



# Ballot Tracking – British Columbia Sept 10 - 12

**Question:** If a FEDERAL election were held today, could you please rank your top two current local voting preferences? [First ranked response] – British Columbia Only.

A national dual-frame (land+cell) random telephone survey is conducted nightly by Nanos Research throughout the campaign using live agents. Each evening a new group of 400 eligible voters are interviewed. The daily tracking figures are based on a three-day rolling sample comprised of 1,200 interviews.

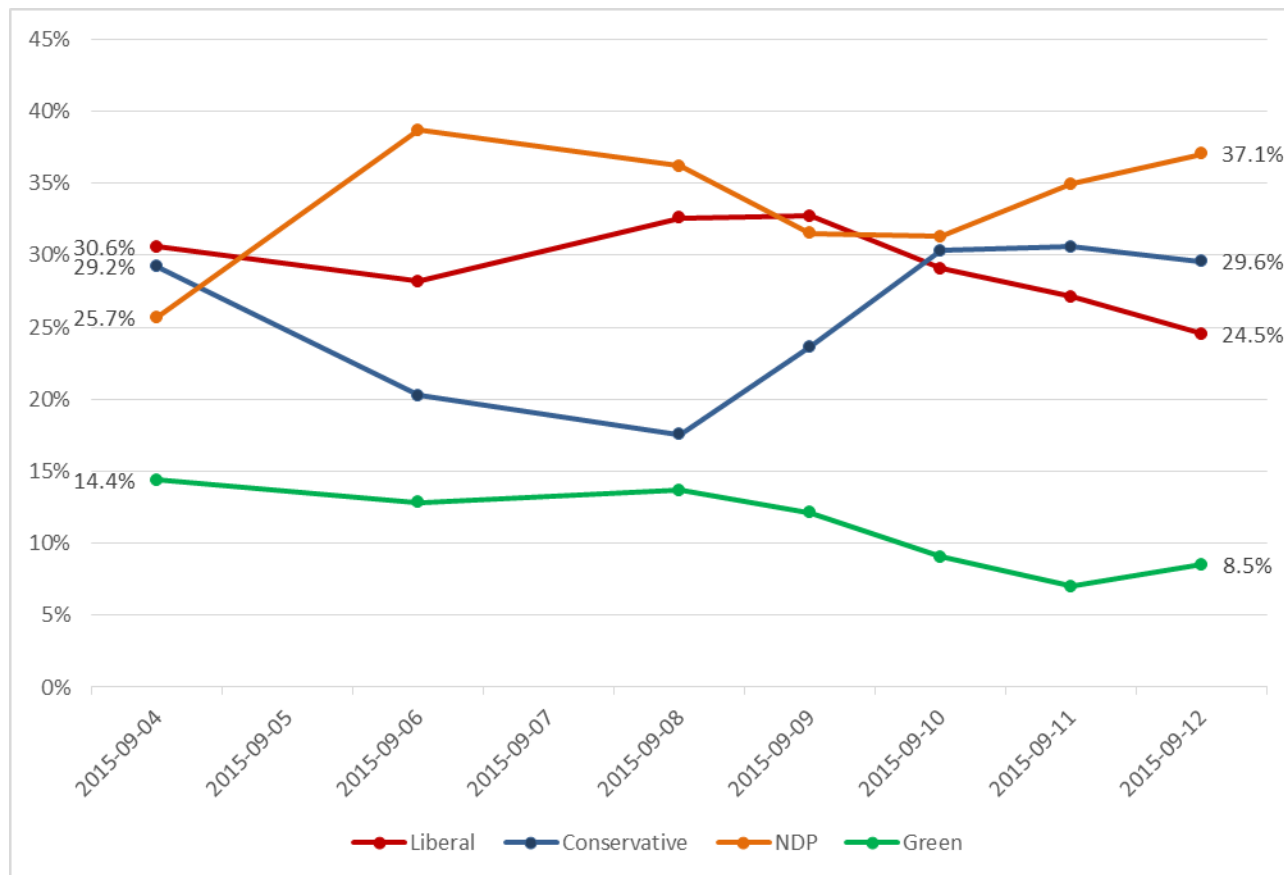
To update the tracking a new day of interviewing is added and the oldest day dropped. The subsample for British Columbia is based on 162 decided individuals. A sample of 162 respondents is accurate  $\pm 7.8$  percentage points, 19 times out of 20.

Contact: Nik Nanos

Ottawa: (613) 234-4666 x 237

[nnanos@nanosresearch.com](mailto:nnanos@nanosresearch.com)

Twitter: @niknanos



[www.nanosresearch.com](http://www.nanosresearch.com)

# Survey Methodology

A national random telephone (land + cell) survey using live agents of 1,200 Canadians is conducted by Nanos Research throughout the campaign over a three day period. Each evening a new group of 400 eligible voters are interviewed. The daily tracking figures are based on a three-day rolling sample comprised of 1,200 interviews. To update the tracking a new day of interviewing is added and the oldest day dropped. The margin of error for a survey of 1,200 respondents is  $\pm 2.8\%$ , 19 times out of 20.

The respondent sample is stratified geographically and by gender. The data may be weighted by age according to data from the 2011 Canadian Census administered by Statistics Canada. Percentages reported may not add up to 100 due to rounding. The research has been registered with the Marketing Research and Intelligence Association of which Nanos is a member.



THE GLOBE AND MAIL



NANOS SURVEY

# Technical Notes

Element	Description	Element	Description
Organization who commissioned the research	CTV; Globe and Mail; Nanos Research	Weighting of Data	The results were weighted by age and gender using the latest Census information (2011) and the sample is geographically stratified to ensure a distribution across all regions of Canada. See tables for full weighting disclosure
Final Sample Size	1,200 Randomly selected individuals; three night rolling average of 400 voters a night; closing weekend oversample. The interviews are compiled into a three day rolling average of 1,200 interviews, where each week the oldest group of 400 interviews is dropped and a new group of 400 interviews is added.	Screening	Screening ensured potential respondents did not work in the market research industry, in the advertising industry, in the media or a political party prior to administering the survey to ensure the integrity of the data.
Margin of Error	±2.8 percentage points, 19 times out of 20.	Excluded Demographics	Individuals younger than 18 years old; individuals without land or cell lines could not participate.
Mode of Survey	Tracking; RDD dual frame (land- and cell-lines) random telephone survey.	Stratification	By age and gender using the latest Census information (2011) and the sample is geographically stratified to be representative of Canada. Smaller areas such as Atlantic Canada were marginally oversampled to allow for a minimum regional sample.
Sampling Method Base	The sample included both land- and cell-lines RDD (Random Digit Dialed) across Canada.	Estimated Response Rate	Nine percent, consistent with industry norms.
Demographics (Captured)	Atlantic Canada, Quebec, Ontario, Prairies, British Columbia; Men and Women; 18 years and older. Six digit postal code was used to validate geography.	Question Order	Question order in the preceding report reflects the order in which they appeared in the original questionnaire.
Demographics (Other)	Age, gender, education, income	Question Content	This was part of a nightly omnibus survey. The preceding module included questions about national issues of concern and ballot preferences.
Fieldwork/Validation	Live interviews with live supervision to validate work as per the MRIA Code of Conduct	Question Wording	The order of questions is as presented in the report with a randomization of the political leaders for the question involving leader qualities.
Number of Calls	Maximum of five call backs.	Survey Company	Nanos Research
Time of Calls	Individuals were called between 6:30-9:30pm local time for the respondent.	Contact	Contact Nanos Research for more information or with any concerns or questions. <a href="http://www.nanosresearch.com">http://www.nanosresearch.com</a> Telephone:(613) 234-4666 ext. Email: info@nanosresearch.com.
Field Dates	September 10 <sup>th</sup> , 11 <sup>th</sup> , and 12 <sup>th</sup> , 2015.		
Language of Survey	The survey was conducted in both English and French.		



THE GLOBE AND MAIL



NANOS SURVEY