

## INSIDE

**CMA Fest A Career Marker For Florida Georgia Line**  
>page 2

**Blair Garner, Hitmakers Do Mornings In New York**  
>page 6

**Marty Stuart's Late-Night Jam Raises Cash**  
>page 6

**Zac Brown Band Gets A Jump On The Top 10**  
>page 7

**Lady A's Passing Reference To Luke**  
>page 8

BILLBOARD COUNTRY UPDATE

[Tom.Roland@billboard.com](mailto:Tom.Roland@billboard.com)

## CMA Music Festival Enters New Era With Music City Center



A new building, a bunch of surprises and record attendance left CMA Music Festival producers buoyant that an even larger fan celebration of the genre is on the horizon.

Some 80,000 people per day attended the festival June 6-9 for a mix of concerts and up-close moments with current hit-makers, heritage artists and newcomers. They got a big dose of surprises, particularly at LP Field, where one or more unannounced guests showed up every night: **Kenny Rogers** popped into **Zac Brown Band's** set to sing "The Gambler," an unannounced **Lenny Kravitz** played two songs with an unannounced **Jason Aldean**, **Charlie Daniels** collaborated with **Brad Paisley**, and **Taylor Swift** brought out **Tim McGraw** and **Keith Urban** to re-create "Highway Don't Care."

**Hunter Hayes** delivered an unexpected afternoon set on the Riverfront Stage, disguised on the bill as **Thunder Locomotive**. **Dierks Bentley** dropped in on the **Grascals'** Riverfront performance. And **Randy Travis**, speaking during a panel that paid tribute to the late **George Jones**, unveiled a new song, "Tonight I'm Playing Possum." The recording, a duet

with **Joe Nichols**, was such a surprise that neither artist's representatives were aware it was intended to be released online, as Travis told the audience.

"It's no secret," CMA CEO **Steve Moore** said. "Fans love surprises."

Thus, there will be more during future editions of the festival, Moore promised.

The CMA got its own surprises. The 80,000 daily visitors was an increase of nearly 15% over last year's numbers. And even before the final night's concert was over, the CMA had already sold more than half of its tickets for 2014. The pre-sales were 80% higher than the trade organization experienced a year ago.

"The excitement of the format, the artists, the industry, couldn't be more robust," Moore surmised.

Artists at the festival aren't compensated for their appearances, though the event is generally regarded as a good marketing opportunity. New artists are able to bond with some of the genre's most enthusiastic customers, established acts have a chance to get screen time on an annual ABC-TV spe-



Dustin Lynch poses with a CMA Music Festival attendee at Fan Fair X in Nashville's new Music City Center.

**ZAC BROWN BAND**

**JUMP Right IN**

**POWER UP NOW!**

**TOP 10 THIS WEEK!**  
**THE PERFECT 3 MINUTE SUMMER TEMPO SONG!**

Sevens & Ground ROAR

cial, and every participating act benefits from being perceived as an accessible, relatable personality.

“It’s important to be here for the town, more than anything,” said Paisley, noting that no other city has a closer association with one genre than Nashville has with country. “This is the heart, this is the place. When you want to say that we’re the format that really does stuff and gives back to the fans, then you do that here, and you make it a thing that helps the city and that helps the fans, and it’s a big love fest.”

The festival uses three tentpole attractions. Two of those, the nightly concerts at the city’s NFL stadium and the fair-like daytime stages in the heart of downtown, are essentially maxed out. The CMA turned to the new Music City Center, a convention center that opened in May, to expand the event. The exhibit hall, which previously occupied 100,000 square feet, expanded to more than 250,000 square feet in the new facility.

The CMA filled the space, too, presenting country artifacts and memorabilia and offering an intimate look at the artist’s belongings. One of those attractions included a visit to **Trace Adkins’** tour bus, a provision that some CMA executives were skeptical about. But the tour bus had a steady line of takers.

“That’s the kind of little stuff that may seem petty, but to the fans, it’s a real take-home experience,” Moore observed.

Also well-received were a series of public panels and interviews. Heritage artists reminisced in a trio of panels centered on country in the ’70s, ’80s and ’90s. George Jones’ widow, **Nancy Jones**, joined **Jamey Johnson**, Randy Travis, **John Rich** and drummer **Bobby Birkhead** to share their memories of the Possum, who died April 26. **Ronnie Dunn**, **Steve Wariner**, **Wynonna** and **Lady Antebellum** also took questions from fans in appearances that usually included stripped-down performances.

“There’s nothing like this, not only in any other country but in any other genre,” **The Band Perry’s Reid Perry** noted.

He recounted a conversation with U.K. fans who were aware of a number of multigenre festivals, but none so successfully dedicated to a single style of music.

“To see 60,000 people in one spot for one genre is something really special and unique,” he said.

Not that the CMA Festival was always this successful. Established in 1972, the industry’s story has long been that the inaugural Fan Fair—as it was originally called—brought 5,000 people to town. Moore discovered over the weekend from former CMA board member **Jerry Bradley** that the original attendance was actually a mere 600 people.

“From 600 to 80,000,” Moore mused. “Interesting growth trajectory.”

### FGL MEASURES GROWTH VIA CMA

When **Florida Georgia Line** prepared to play the BMI Tailgate Stage outside Nashville’s LP Field at the CMA Music Festival in June 2012, the duo could hear **Hunter Hayes** doing sound check for his performance on the main stage inside the stadium.

### THIS WEEK AT CALLOUT AMERICA

## Craig Campbell Is Headed Upward

**Craig Campbell** moves into the top five with “Outta My Head” at No. 4 and No. 5 favorite. Listeners 18-44 rate it at No. 4 and No. 11 favorite, while adults 25-54 call it No. 4 and No. 9 favorite. Core females 35-44 respond at No. 2 and No. 8 favorite. Males 25-34 are at No. 10 positive and favorite.



**Jake Owen** repeats at No. 2 this week with “Anywhere With You,” which is also the No. 5 favorite for listeners 18-plus. Adults 18-44 grade it No. 1 and No. 5 favorite. Females rank “Anywhere” at No. 3 overall and No. 5 favorite. Male strength is with 18-44s at No. 2, up from No. 5.

**Brad Paisley** stays in the power zone with “Beat This Summer” at No. 3 and No. 2 favorite. Adults 25-54 score it at No. 2 positive and favorite. Female strength lies with core 35-44s at No. 3 and No. 9 favorite. Core males are at No. 2 and No. 7 favorite.

**Easton Corbin** continues his strong showing with “All Over the Road,” which travels to No. 9 and No. 8 favorite. Adults 35-54 are the key age bracket at No. 7 and No. 6 favorite. Males 18-plus are the driving gender at No. 7 and No. 6 favorite. Core males 35-44 are at No. 3 positive and favorite.

**Phil Vassar** is inside the top 20 at No. 16 with “Love Is Alive,” which rises to No. 10 favorite from No. 13. Core 35- to 44-year-olds research at No. 10 positive and favorite. Females are moving the needle at No. 6 overall and No. 2 favorite, and core females are at No. 1 favorite and No. 8 overall.

View the latest research [here](#) User ID is Callout; password is America.  
 —John Hart, Bullseye Marketing Research  
 email: [hart@bullsi.com](mailto:hart@bullsi.com)

# KELLIE PICKLER

“SOMEONE SOMEWHERE TONIGHT”

**Billboard 57\*–52\***  
CA/MB +90 spins +164 points

**13 New Believers:**  
KMPS KNIX WQMX KMNB WFUS WQIK WKMK  
WSSL WPOR KUZZ WUSH WQHK WEZL

[CLICK HERE TO WATCH.](#)







**#1 MOST ADDED!**  
**91 First Week Stations.**  
**Thank You, Country Radio!**

**KENNY CHESNEY**  
*When I see This BAR*

[www.kennychesney.com](http://www.kennychesney.com)

  /kennychesney







Thomas Rhett (left) hangs with BMI assistant VP writer/publisher relations Clay Bradley before a June 6 appearance on the BMI Tailgate Stage during the CMA Music Festival.

It was an odd moment. FGL's Tyler Hubbard and Brian Kelley weren't even signed to a record deal, but they were playing the Country Music Assn.'s signature festival for the first time. Here was Hayes, then 21, unwittingly making it clear to the duo that it had not yet arrived.

"I remember saying to Tyler, 'Man, it'd be amazing to be in there and play. How cool it would be to be there right now,'" Kelley recalls. "LP Field is one of those places in Nashville you wanna check off your bucket list of places to play."

In the most dramatic ascent at the 2013 CMA Festival, Florida Georgia Line did indeed play LP Field's main stage on June 8. In fact, in an appropriate twist of events, the duo could be heard playing "Get Your Shine On" during sound check while one of the Tailgate Stage acts, the unsigned Native Run,

prepared to play outside the stadium.

Because the festival takes place at the same time every year, it becomes something of a career marker for many of country's stars. They can gauge changes in their careers by their ability to play larger stages, by the amount of merchandise they sell, by the volume of events on their schedule or by the number of fans waiting in their autograph lines.

"Sometimes you lose track of time and everything's running together and everything happens so fast," Hubbard says. "So to look at CMA Fest every year and think about last year and the year before that, it is a good marker, a good time of year to kind of meditate on where you're at and where you're going."

A year ago, Big Loud Mountain GM Seth England, the group's manager, had to battle for every bit of exposure. The act's debut single, "Cruise," went on sale digitally just five weeks before the 2012 festival. Some secondary radio stations and SiriusXM jumped on it early, but the act was building a fan base outside the view of most of Music Row.

By the time Florida Georgia Line tried to secure one of the festival's traditional performance slots, they were all booked. England twisted a few arms just to get a spot in the kick-off parade, and BMI's stage—which was making its debut—was about the only place the duo could gain any exposure.

As it turned out, an estimated 1,000 fans showed up at that untested venue, and music executives drinking beer in the VIP section were shocked to see many of them singing all the words to songs the execs had never heard before.

"We took a chance putting them on the bill, but we looked like we were



Florida Georgia Line's Brian Kelley (left) and Tyler Hubbard make their first appearance at LP Field in Nashville.

### BILLBOARD COUNTRY BOXSCORE

Gross Ticket Price(s)	Artist Venue/Date(s)	Attendance Capacity	Promoter(s)
\$4,306,664 \$242, \$52	<b>KENNY CHESNEY</b> Miller Park, Milwaukee/May 18	<b>43,314</b> sellout	THE MESSINA GROUP/AEG LIVE, MILWAUKEE BREWERS
\$2,239,370 \$84.50, \$29.50	<b>TAYLOR SWIFT</b> Jobing.com Arena, Glendale, Ariz./May 28-29	<b>26,705</b> two sellouts	THE MESSINA GROUP/AEG LIVE
\$1,139,360 \$84.50, \$29.50	<b>TAYLOR SWIFT</b> EnergySolutions Arena, Salt Lake City/June 1	<b>14,007</b> sellout	THE MESSINA GROUP/AEG LIVE
\$1,076,069 \$84.50, \$29.50	<b>TAYLOR SWIFT</b> Pepsi Center, Denver/June 2	<b>13,489</b> sellout	THE MESSINA GROUP/AEG LIVE
\$891,041 \$76.40, \$28.05	<b>BRAD PAISLEY</b> Molson Canadian Amphitheatre, Toronto/May 31	<b>16,504</b> sellout	LIVE NATION

Reported worldwide boxscore figures for Country artists. Boxscore figures should be submitted to Bob Allen by phone (615-793-0466), fax (615-793-2891) or email (bob.allen@billboard.com).



*Yellow Brick Road*

# Morgan Frazier

**A FRESH NEW SONG  
FROM A FRESH NEW ARTIST**

**#6 Active P1 Adults 25-54**  
**#7 Active CORE 25-44**  
**#5 Active CORE Females**  
**#7 Active Females 18-34**  
**#6 Favorite NEW Song Males 45-54**

BULLSEYE NEW MUSIC\BULLSEYE AUDIENCE RESEARCH

**STRONG ACCEPTANCE  
FROM COUNTRY RADIO LISTENERS  
WITH BROAD DEMO APPEAL**





# ELI YOUNG BAND

*drunk last night*



## DRUNK LAST NIGHT

THE BRAND NEW SINGLE FROM

## ELI YOUNG BAND

ON YOUR DESK THIS WEEK!

**OFFICIAL ADD DATE JULY 1<sup>ST</sup>**

ON TOUR WITH KENNY CHESNEY ALL SUMMER!

*Republic*  
NASHVILLE

**CLICK HERE TO LISTEN**

**BMLG**



brilliant,” BMI assistant VP of writer/publisher relations **Clay Bradley** notes. “But that’s what we want. We want to have a stage where we can risk something and see if it pays off.”

It paid off big for Florida Georgia Line. Big Machine Label Group president/CEO **Scott Borchetta** saw the performance, and barely a month later, the act was signed to BMLG’s Republic Nashville imprint and a remastered version of “Cruise” was rereleased to radio. It ascended to No. 1 on Hot Country Songs; became one of country’s 10 most-downloaded songs of 2012, according to Nielsen SoundScan; and has since reached the top five on the Billboard Hot 100 through a remix that features **Nelly**.

“The fans that showed up and were singing, that was kind of an indicator of things to come and things that were changing throughout that summer,” Kelley reflects.

Florida Georgia Line was not the only act using the 2013 festival as a career marker. Warner Music Nashville artist **Brett Eldredge**, preparing for the release of his debut album, walked the red carpet at the CMT Awards for the first time, an obvious change from years past.

“I’ve always been at home on the couch watching this,” he says. “It’s cool to be on the carpet.”

**Gloriana**, attending the festival for the sixth or seventh time in its career, sang the national anthem at LP Field, marking its debut on the big stage. And Hayes, it turns out, was feeling somewhat out of place doing that sound check last year at the stadium. The fact that he got to return to the football field this year was a marker in itself, an assurance that his ascent was more than just a fluke.

“There is something really, really special to driving in downtown Nashville and seeing the sign on the lamp post of who’s playing LP Field,” he explains. “Last year I looked and there was **Kenny Rogers**, there was me—I didn’t know what I was doing there.”

Florida Georgia Line had one other career marker at an event adjacent to the CMA Festival. A year ago, songwriter **Craig Wiseman** (“Boys ’Round Here,” “Live Like You Were Dying”) had the duo open his annual Stars for Second Harvest benefit concert at the Ryman Auditorium, which typically sells 600-700 tickets, according to England.

“Last year, Craig went out and had to over-explain why they were on the show,” England says. “This year, they headlined the event. We basically sold it out and raised over \$100,000. That’s never been done in the last 10 years.”

## UNDERWOOD CLAIMS TOP CMT PRIZE

**Carrie Underwood** claimed the biggest Buckle in the Bible Belt during the June 5 CMT Music Awards, while **Florida Georgia Line** and **Miranda Lambert** each walked off with two trophies at Nashville’s Bridgestone Arena.

Underwood’s video of the year win came for “Blown Away,” a song built around tornado imagery. It came, ironically, after she delivered one of the night’s most difficult performances, backed by videos of destruction wrought by one of those storms. She sang her rangy current single, “See You Again,” accompanied by a gospel choir in front of black-and-white footage of broken homes from her home state of Oklahoma. Underwood recently donated \$1



Carrie Underwood’s “Blown Away” won video of the year during the CMT Music Awards. From left are CMT senior VP of music strategy Leslie Fram, Underwood and Viacom Music & Logo Group president Van Toffler.

million to tornado relief. Though she forced a smile, she seemed emotionally challenged during the performance.

“The good Lord has been very good to me, all of us in this room for a long time,” she said in her acceptance speech. She offered thanks “for our love of music and making music videos.”

Florida Georgia Line’s “Cruise” earned duo video of the year and breakthrough video. Lambert took female video for “Mama’s Broken Heart” and also snagged CMT performance of the year for a live version of “Over You” from the 2012 “CMT Artists of the Year” special.

Lambert actually made three acceptance speeches; she claimed the male Buckle for husband **Blake Shelton**, who won with “Sure Be Cool If You Did.” “Honey, I’m drinking for two tonight,” she proclaimed.

**Lady Antebellum** collected the group video for “Downtown,” and **Jason Aldean**—who co-hosted with actress **Kristen Bell**—shared collaborative video with **Eric Church** and **Luke Bryan** for “The Only Way I Know.”

**The Mavericks** served as house band for the evening. The band played a televised snippet of the late **George Jones**’ “The Race Is On” and supported **Randy Houser**’s “How Country Feels,” **Cassadee Pope**’s “Wasting All These Tears,” **Love and Theft**’s “Angel Eyes,” **Ashley Monroe**’s “Weed Instead of Roses,” **Kree Harrison**’s “All Cried Out” and **Dustin Lynch**’s “Cowboys and Angels.”

Read the complete story on [billboard.com](http://billboard.com).

## MOVERS & SHAKERS

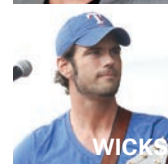
Confirming rampant speculation, **Blair Garner** has been announced as the host for the WNSH New York morning show, beginning later this month. The show will be produced in Nashville, with **Sunny Sweeney**, **Lee Ann Womack**, **Chuck Wicks** and **Terri Clark** all part of the team. A Cumulus spokesperson would neither confirm nor deny if the show is intended to roll out to other markets as the company extends its Nash on-air brand. . . **Heather McBee** will serve as operations director for “America’s Morning Show,” responsible for marketing, promotions, staffing and booking. McBee was previously VP of marketing and Web initiatives for Sony Music Nashville. . . **Carrie Underwood**, **Trace Adkins**, **Brad Paisley** and **Kelly Clarkson** are among the artists who’ve been enlisted for Clear Channel’s Show Your Stripes PSA campaign to battle veteran unemployment. . . Clear Channel and the Nashville-based Dualtone Music Group have agreed to share digital and broadcast royalties. The deal affects singer/songwriter **Guy Clark** and **the Lumineers**, among others. . . **Erica Cobb** has signed on as co-host of the morning show with **Jonathan Wilde** at KWOF Denver. . . Dial Global promoted **Charles Steinhauer** to COO, RadioInfo.com reports. The company’s country programming includes “CMT Radio Insider,” “America’s Opry Weekend” and “Country Gold With **Randy Owen**,” among others. . . RadioInfo.com also reports JVC Broadcasting has promoted WJVC Center Moriches, N.Y., PD **Phathead** to director of country programming, which puts WTRS and WYGC Ocala-Gainesville, Fla., in his portfolio. **Shane Reeve** has been hired as market manager. . . Cumulus has named **John Gallagher** market manager for its stations in Toledo, Ohio, and Monroe, Mich., according to Inside Radio. The cluster includes country WKKO Toledo, Ohio. . . Also from Inside Radio: WRBT Harrisburg, Pa., operations manager/PD **Jeff Hurley** has added afternoon drive to his job description.



SWEENEY



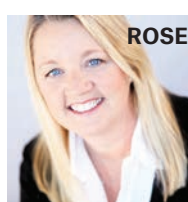
GARNER



WICKS

## ’ROUND THE ROW

CMT has hired **Hector Campos** as VP of programming and strategy, following a decade with Turner Broadcasting. . . ZUUS Media has acquired the Country Network (TCN), renaming the service as ZUUS Country. The network will continue to operate from its Nashville headquarters. . . The Creative Artists



ROSE

Agency tapped **Jake Kennedy** as a music agent following a run as an agent for Buddy Lee Attractions. . . Songwriter **Liz Rose** (“Crazy Girl,” “You Belong With Me”) has signed a co-publishing deal with Warner/Chappell. . . Seven women are being recog-



CAMPOS

nized during the annual SOURCE Awards on Sept. 24 at the Musicians Hall of Fame in Nashville: **Charlie Daniels Band** director **Bebe Evans**; Bonnie Garner Management founder **Bonnie Rothbaum Garner**; Gerrieco owner **Gerrie McDowell**; former Fleischer-Robin president **Debi Fleischer-Robin**; CDB director of marketing, advertising and publicity **Paula Szeigis**; GAC senior VP/GM **Sarah Trahern**; and the late Sony/ATV Nashville president/CEO **Donna Hilley**. For more info, reach **Sheree Spoltore** [here](#). . . Music photographer **Russ Harrington** and his wife, painter **Brenda Harrington**, will launch a two-month exhibit of their work with a 6 p.m.-8 p.m. reception on June 13 at Chromatics Second Floor Gallery in Nashville. Go [here](#) for info. . . Warner Music Nashville has established the FTL Sarcoma Fund in the name of the late **Lindsay Walleman**. Affiliated with the T.J. Martell Foundation, it has already raised \$10,000. Go [here](#) to donate. . . Bassist/vocalist **Ray Emmett** died June 2, the Tennessean reports. He played in the road bands of **Faron Young**, **George Jones** and **Mel Tillis**, among others.

## GOOD WORKS

**Marty Stuart's** Late Night Jam, a longtime fixture on the CMA Music Festival calendar, raised more than \$16,000 for MusiCares with a mix of new acts and heritage artists on June 5 at Nashville's Ryman Auditorium.

**Bobby Bare** sang a few of the songs that got him into the Country Music Hall of Fame, including "Detroit City" and "Marie Laveau." **The Oak Ridge Boys**, **Connie Smith**, **Sleepy Man Banjo Boys**, **Mo Pitney** and **Jamey Johnson** were all onstage at one time or another, as were **the Mavericks**.

Stuart asked the Oaks to reprise their performance of "Farther Along," which they sang at **George Jones'** funeral, as a tribute to the music legend. Then Johnson asked the group to perform "Amazing Grace" with him, to the tune of "House of the Rising Sun."

The Late Night Jam has raised \$200,000 for MusiCares during its 12-year history.

—Reporting by Vernell Hackett

## TWEET OF THE WEEK Twitter

**The Oak Ridge Boys** (@oakridgeboys) were as amused as anyone when **William Lee Golden** found kindred spirits in the June 8 co-hosts at Nashville's LP Field during the CMA Music Festival:

"Breaking: @wlgolden is leaving us and joining @DuckDynastyAE funny . . . He almost looks photoshopped in."

To follow BCU, go to [Twitter.com/bbcountryupdate](http://Twitter.com/bbcountryupdate).



The Oak Ridge Boys' William Lee Golden makes a sporting on-stage appearance with cast members from the A&E show "Duck Dynasty" during a June 8 concert at Nashville's CMA Music Festival. From left are cast members Si Robertson and Willie Robertson, Golden and Jase Robertson.

ON THE CHARTS WADE JESSEN [wade.jessen@billboard.com](mailto:wade.jessen@billboard.com)

# Zac Brown Band Makes It A Dozen; McGraw, Swift Improve Audience Mark



**Zac Brown Band** brings its top 10 count to 12 on Billboard's Country Airplay tally, as "Jump Right In" (Atlantic/Southern Ground) steps 11-10 in its 18th chart week. That's the most by any group since Zac Brown Band's first top 10 week on the chart dated Nov. 1, 2008, followed by nine apiece for **Lady Antebellum** and **Rascal Flatts**, six for **The Band Perry** and three for **Little Big Town** during that time frame. Since the Nielsen BDS-fueled Country Airplay chart launched in January 1990, Zac Brown Band has the seventh-most top 10s among groups. The list is topped by **Rascal Flatts** (28), followed by **Alabama** (24), **Diamond Rio** (19), **Lonestar** (18), **Dixie Chicks** (14) and **Sawyer Brown** (14). Behind ZBB are Lady Antebellum (10), **Shenandoah** (10) and **Little Texas** (8).



ZAC BROWN BAND

Brown's group most recently led the chart with "Goodbye in Her Eyes," which spent three weeks at the summit in January. The act has missed the top 10 only once since its breakthrough single, "Chicken Fried," became its first No. 1 almost five years ago: It stopped at No. 11 with "The Wind" last fall. All but two of

the band's top 10 singles spent time at No. 1, the exceptions being "Whatever It Is," which peaked at No. 2 four years ago, and "No Hurry," which also stopped at No. 2 last year. Its longest chart-topping run was four weeks with "Keep Me in Mind" in December 2011/January 2012.

Meanwhile, **Tim McGraw** (with **Taylor Swift**) surpasses the weekly Country Airplay audience record set last week with "Highway Don't Care" (Big Machine), which holds at No. 1 for a second week. As reported in the June 3 Billboard Coun-

try Update (reflecting the May 27-June 2 BDS tracking week), "Highway" logged the biggest weekly audience sum (41.3 million impressions) since the Country Airplay chart switched to audience-based rankings in January 2005, besting **Toby Keith's** "As Good As I Once Was," which logged 40.6 million impressions in two successive weeks in August 2005. The McGraw-Swift collaboration gains 325,000 impressions for a record-rewriting 41.6 million total impressions during the June 3-9 tracking week. For McGraw, "Highway" is the 19th of his 26 career leaders to spend more than one week atop the Country Airplay chart. Remarkably, McGraw's first 12 No. 1s each spent multiple weeks atop the chart (1994-2001). His longest run was seven cumulative weeks with "Live Like You Were Dying" nine years ago.

Swift's Country Airplay chart history includes seven leaders, the first four of which logged multiple weeks at the summit (2007-09). She most recently posted multiple No. 1 weeks with "You Belong with Me," which ruled for two weeks in the summer of 2009.

**Jake Owen** achieves his fourth consecutive leader on the Country Indicator chart, as "Anywhere with You" (RCA Nashville) steps 2-1. His previous No. 1s on the national formats/secondary markets chart are "Barefoot Blue Jean Night" (2011), "Alone With You" and "The One That Got Away" (both in 2012). Owen's current track reaches a new peak at No. 3 on Country Airplay, where it gains 3.5 million impressions in its 23rd chart week, the third-biggest increase on that list. The biggest gain on Country Airplay belongs to **Luke Bryan's** "Crash My Party" (Capitol Nashville), which spikes by 4.8 million impressions (6-4), followed by The Band Perry's "DONE." (Republic Nashville), up 3.7 million (8-7).

**HOUSEKEEPING:** Effective with the June 10-16 BDS tracking week, **WKDF** Nashville joins the Country Airplay panel, and **KJUG** Visalia, Calif., moves from the Country Indicator panel to the Country Airplay panel.



## MUSIC NOTES

Grand Ole Opry members **Pam Tillis** and **Lorrie Morgan** will release the album *Dos Divas* on July 23 billed as the duo **Grits and Glamour**. The two sang the national anthem for the closing June 9 concert at the CMA Music Festival. Backstage they told reporters that even though their fathers took them to the Opry in the 1970s and they were both making hits in the '90s, a friendship never really developed until recent years. "We were," quipped Tillis, "tour buses passing in the night."

The bars on Lower Broadway in Nashville were booming during the CMA Music Festival, and nearly every one had a live band or karaoke machine going. Songs heard in passing included **Thompson Square's** "Are You Gonna Kiss Me or Not," **Reba McEntire's** "Fancy," **Dwight Yoakam's** "Ain't That Lonely Yet" and—on several occasions—**Darius Rucker's** "Wagon Wheel." "If I hear 'Wagon Wheel' one more time," complained one security guard, "I think I'm gonna snap."

**Chris Young's** album *A.M.* and **Billy Currington's** *We Are Tonight* will be



ELDREDGE

released Sept. 17, and **Brett Eldredge's** debut is due Aug. 6. Eldredge wedged vocal recording sessions in between public events during the CMA Music Festival to make this week's recording deadline. "The more that's going on, the more I feel inspired," he said. "So I play a show, and then I go in and sing, and then I go play another show? Well, that's what I always wanted to do, so why not do it? I'll sleep later."

**Luke Bryan** took it on the chin when he wasn't in the room during CMA Music Festival. **Lady Antebellum's Charles Kelley**—asked by fans what habit most

annoyed his wife—confessed he passes gas a lot. But, Kelley added, "Luke Bryan is the gassiest person in the world."

## ON THIS DATE IN COUNTRY MUSIC

### June 10

- 2012—**Kenny Rogers** takes the stage with the jam band Phish during the closing set at the Bonnaroo Music Festival in Manchester, Tenn. They perform "The Gambler."
- 2007—**LeAnn Rimes** delivers the national anthem prior to Game Two of the NBA finals at San Antonio's SBC Center. The Spurs beat the Cleveland Cavaliers, 103-92.



ROGERS

### June 11

- 2003—RCA releases **Martina McBride's** "This One's for the Girls" to radio.
- 1988—**Patty Loveless** joins the Grand Ole Opry, where she sings "If My Heart Had Windows" and "A Little Bit in Love."

### June 12

- 1973—**Dolly Parton** records "Jolene" one afternoon at RCA Studio B in Nashville.

### June 13

- 2004—In the final concert of the 2004 CMA Music Festival, **Hank Williams Jr.** sings "Family Tradition" at Nashville's Coliseum with support from **Pat Green, Montgomery Gentry, Darryl Worley, Michelle Poe** and **Poison** vocalist **Bret Michaels**.

### June 14

- 2009—**Jamey Johnson** is a surprise guest during **George Jones'** concert at Nashville's Ryman Auditorium, joining the Possum on "Who's Gonna Fill Their Shoes."

### June 15

- 1963—**Buck Owens** collects his first Billboard No. 1 single with "Act Naturally."
- 1952—**Hank Williams** writes "Your Cheatin' Heart."

### June 16

- 2011—**Garth Brooks** is added to the Songwriters Hall of Fame during an event at the Marriott Marquis Hotel in New York with **Leon Russell, Allen Toussaint** and **John Bettis**.
- 2008—**Trace Adkins** performs "You're Gonna Miss This" during NBC's "Nashville Star" featuring regulars **Billy Ray Cyrus, Jeffrey Steele, Jewel** and **John Rich**.

Source: [RolandNote.com](http://RolandNote.com), the Ultimate Country Music Database

## POWER PLAYLISTS™

### KXKT Omaha, NE

PD: Erik Johnson  
MD: Hoss Michaels  
Clear Channel: 402 561-2000



Plays  
TW LW

1	Jake Owen	Anywhere With You	47	45
2	Tim McGraw	With Taylor S Highway Do	47	45
3	Blake Shelton	Featuring Boys 'Round	47	47
4	Kip Moore	Hey Pretty Girl	41	32
5	Eric Church	Like Jesus Does	41	40
6	Luke Bryan	Crash My Party	41	42
7	The Band Perry	DONE.	40	26
8	Brantley Gilbert	More Than Miles	39	39
9	Darius Rucker	Wagon Wheel	39	42
10	Brad Paisley	Beat This Summer	36	38
11	Thompson Square	If I Didn't Have Yo	30	19
12	Florida Georgia Line	Get Your Shine	30	32
13	Miranda Lambert	Mama's Broken Heart	29	31
14	Easton Corbin	All Over The Road	28	29
15	Hunter Hayes	I Want Crazy	28	31
16	Lady Antebellum	Downtown	27	27
17	The Henningsens	American Beautiful	27	29
18	Gloriana	Can't Shake You	26	19
19	Carrie Underwood	See You Again	25	24
20	Brett Eldredge	Don't Ya	24	19
21	Jason Aldean	With Luke B The Only W	22	20
22	Randy Houser	Runnin' Outta Moonligh	21	20
23	Gary Allan	Every Storm (Runs Out Of	21	21
24	Florida Georgia Line	Cruise	21	22
25	Justin Moore	Point At You	20	15
26	Tim McGraw	One Of Those Nights	19	12
27	Lady Antebellum	Goodbye Town	19	15
28	Lee Brice	I Drive Your Truck	19	17
29	Blake Shelton	Sure Be Cool If You D	19	18
30	Billy Currington	Hey Girl	19	19

### KTTS Springfield, MO

PD: Mark Grantin  
APD/MD: Curly Clark  
Journal: 417 865-6614



Plays  
TW LW

1	Eric Church	Like Jesus Does	48	41
2	Jake Owen	Anywhere With You	45	25
3	Brad Paisley	Beat This Summer	45	45
4	Easton Corbin	All Over The Road	44	25
5	Luke Bryan	Crash My Party	44	41
6	The Band Perry	DONE.	43	42
7	Blake Shelton	Featuring Boys 'Round	43	45
8	Hunter Hayes	I Want Crazy	28	23
9	Keith Urban	Little Bit Of Everythin	27	25
10	Gary Allan	Pieces	27	25
11	Lady Antebellum	Goodbye Town	26	14
12	Kip Moore	Hey Pretty Girl	26	25
13	Carrie Underwood	See You Again	26	26
14	Tim McGraw	With Taylor S Highway Do	26	43
15	Justin Moore	Point At You	25	24
16	Zac Brown Band	Jump Right In	25	26
17	Brantley Gilbert	More Than Miles	24	23
18	Gloriana	Can't Shake You	24	24
19	Randy Houser	Runnin' Outta Moonligh	23	14
20	Darius Rucker	Wagon Wheel	21	42
21	George Strait	Give It All We Got To	20	8
22	Little Big Town	Pontoon	20	11
23	Gary Allan	Every Storm (Runs Out Of	19	16
24	Miranda Lambert	Fastest Girl In Tow	18	4
25	Rachel Farley	Ain't Easy	18	17
26	Miranda Lambert	Over You	18	18
27	Florida Georgia Line	Get Your Shine	18	19
28	Gloriana	(Kissed You) Good Night	17	16
29	Drake White	The Simple Life	17	16
30	Lady Antebellum	Downtown	17	19



Sidewalk artists **Dylan Scott** and **Morgan Frazier** were among the acts who performed during the KUPL Portland, Ore., Countryfest June 1-2. From left are Scott; Sidewalk director of regional promotion, **West Coast Roger Fregoso**; Alpha Broadcasting owner **Larry Wilson**; Frazier; Alpha/Portland market manager **Milt McConnell**; and Alpha director of programming **Scott Mahalick**.



# CMA Music Festival In Pictures

With 80,000 core country fans attending daily, artists found all sorts of ways to mingle and market during the CMA Music Festival June 6-9 in Nashville. Highlights from the event will make up an Aug. 12 ABC-TV special, hosted by Little Big Town.



ASCAP showcased a handful of songwriters at the Bluebird Café on June 5 to kick off the performing rights organization's involvement in the festival. From left are ASCAP senior creative director Mike Sistad, Striking Matches members Justin Davis and Sarah Zimmermann, Alyssa Bonagura and EMI Nashville artist Eric Paslay.



Phil Vassar performed June 6 on the CMA's Riverfront Stage. From left backstage are Vassar, CMA senior VP of marketing and communications Sheri Warnke and CMA CEO Steve Moore.



RPM artist Maggie Rose performs on the Riverfront Stage.



Blake Shelton playing a six-song set on June 7 at LP Field.



"American Idol" graduates Scotty McCreery, Kree Harrison and Lauren Alaina (from left) wait for the start of the City of Hope celebrity softball game. More than 50 runs were scored during the slugfest.

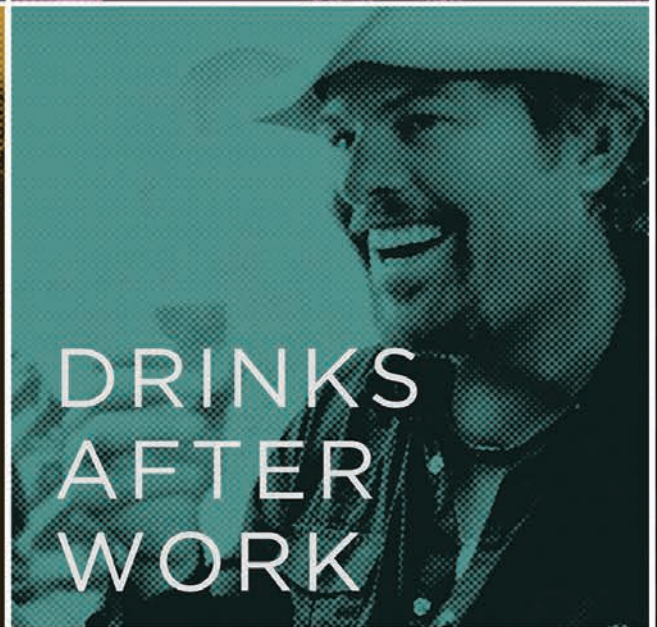
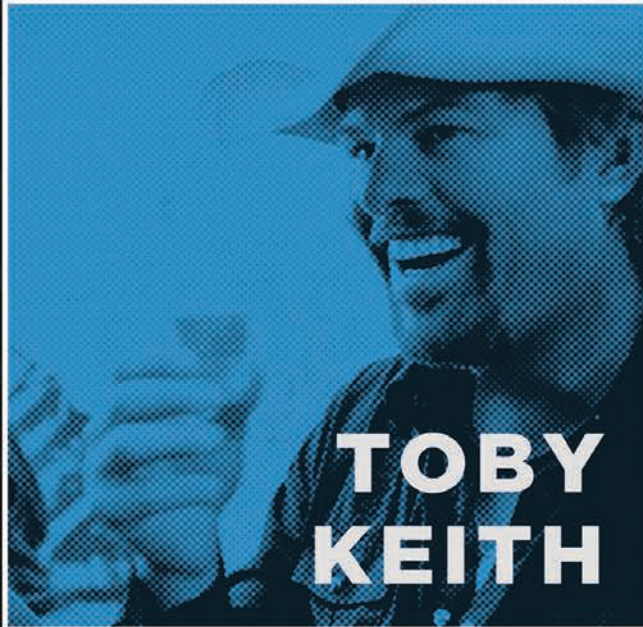


Gwen Sebastian (left) and Jaida Dreyer perform separately on the Transitions Stage in Nashville's Walk of Fame Park.



# HAVING FUN

⇨ 2 for 1 ⇩



**NEW TOBY KEITH SINGLE**  
FOR IMMEDIATE AIRPLAY



# billboard Country Airplay

AIRPLAY  
MONITORED BY  
nielsen  
BDS

THIS WEEK	LAST WEEK	WKS ON CHART	TITLE Imprint/Label	Artist	AUDIENCE (IN MILLIONS)		PLAYS		
					THIS WEEK	+/-	THIS WEEK	+/-	RANK
1	1	18	HIGHWAY DON'T CARE Big Machine <b>★★ No. 1 (2 weeks) ★★</b>	Tim McGraw With Taylor Swift	41.612	+0.325	6430	-29	1
2	3	11	BOYS 'ROUND HERE Warner Bros./WMN	Blake Shelton Featuring Pistol Annies & Friends	40.670	+3.441	6327	345	2
3	4	23	ANYWHERE WITH YOU RCA Nashville	Jake Owen	38.328	+3.557	5934	411	3
4	6	9	CRASH MY PARTY Capitol Nashville <b>★★ Most Increased Audience ★★</b>	Luke Bryan	36.492	+4.810	5493	599	5
5	5	15	BEAT THIS SUMMER Arista Nashville	Brad Paisley	35.173	+2.095	5541	226	4
6	2	23	WAGON WHEEL Capitol Nashville	Darius Rucker	34.503	-4.341	4845	-938	8
7	8	15	DONE. Republic Nashville	The Band Perry	34.062	+3.776	5292	468	6
8	7	23	LIKE JESUS DOES EMI Nashville	Eric Church	30.381	-0.287	4981	-50	7
9	10	34	MORE THAN MILES Valory	Brantley Gilbert	27.540	+1.800	4203	164	9
10	11	18	JUMP RIGHT IN Atlantic/Southern Ground	Zac Brown Band	25.795	+1.773	3992	197	11
11	12	23	HEY PRETTY GIRL MCA Nashville	Kip Moore	25.695	+1.726	4049	241	10
12	13	9	I WANT CRAZY Atlantic/WMN	Hunter Hayes	23.797	+2.499	3765	245	12
13	14	11	SEE YOU AGAIN 19/Arista Nashville	Carrie Underwood	21.410	+2.137	3538	285	13
14	18	34	DON'T YA Atlantic/WMN	Brett Eldredge	19.259	+3.152	3173	297	16
15	15	23	ALL OVER THE ROAD Mercury	Easton Corbin	19.081	+1.672	3259	196	14
16	19	17	RUNNIN' OUTTA MOONLIGHT Stoney Creek	Randy Houser	18.506	+3.223	3200	333	15
17	20	4	LITTLE BIT OF EVERYTHING Hit Red/Capitol Nashville <b>★★ Airpower ★★</b>	Keith Urban	17.685	+2.831	2821	373	18
18	21	13	POINT AT YOU Valory <b>★★ Airpower ★★</b>	Justin Moore	16.454	+1.620	2841	170	17
19	22	18	PIECES MCA Nashville <b>★★ Airpower ★★</b>	Gary Allan	13.710	+0.548	2437	13	19
20	23	5	GOODBYE TOWN Capitol Nashville <b>★★ Airpower ★★</b>	Lady Antebellum	13.179	+1.801	2290	287	20
21	24	14	HEY GIRL Mercury	Billy Currington	11.362	+0.815	2013	137	21
22	25	16	REDNECK CRAZY Columbia Nashville	Tyler Farr	9.438	+0.744	1828	90	22
23	26	16	EASY Warner Bros./WMN	Sheryl Crow	8.778	+0.732	1666	86	23
24	31	7	PARKING LOT PARTY Curb	Lee Brice	6.650	+1.203	1387	262	24
25	28	36	OUTTA MY HEAD Bigger Picture	Craig Campbell	6.603	+0.526	1379	77	25
26	29	11	BLOWIN' SMOKE Mercury	Kacey Musgraves	6.524	+0.997	1323	153	27
27	30	22	COULD IT BE Warner Bros./WAR	Charlie Worsham	6.240	+0.781	1342	56	26
28	32	7	IT GOES LIKE THIS Valory	Thomas Rhett	5.397	+0.443	1163	89	28
29	40	4	ROUND HERE Republic Nashville <b>★★ Most Added ★★</b>	Florida Georgia Line	4.595	+2.299	716	390	36
30	35	6	SUNNY AND 75 Red Bow <b>★★ Breaker ★★</b>	Joe Nichols	4.469	+0.609	824	123	33

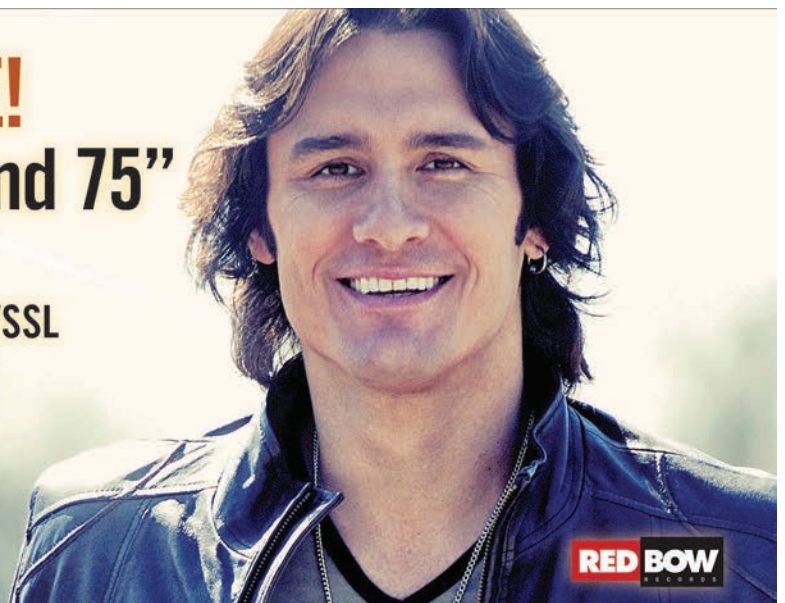
## LET THE SUN SHINE! Joe Nichols • "Sunny And 75"

Top 10 Most Added Again!

WUSN WKLB KNIX WTQR WWYZ WSSL  
WZZK WKSJ WDRM KUAD WUSJ

BB Breaker! BB 35\*-30\* +609K Aud  
CA/MB 38\*-37\* +140 sp

iTunes Sales Jump Another 12%!



**RED BOW**  
RECORDS



# billboard Country Airplay

AIRPLAY  
MONITORED BY  
**nielsen**  
BDS

THIS WEEK	LAST WEEK	WKS ON CHART	TITLE Imprint/Label	Artist	AUDIENCE (IN MILLIONS)		PLAYS		
					THIS WEEK	+/-	THIS WEEK	+/-	RANK
31	36	5	AW NAW RCA Nashville	Chris Young	4.225	+0.396	984	110	30
32	33	10	YOUR SIDE OF THE BED Capitol Nashville	Little Big Town	4.217	+0.140	1097	68	29
33	34	20	IF YOU WANT SOME Show Dog-Universal	Joel Crouse	3.781	-0.134	979	21	31
34	37	15	BETTER RPM	Maggie Rose	3.656	-0.001	894	7	32
35	39	19	CAROLINA Stoney Creek	Parmalee	3.398	+0.474	808	76	34
36	38	16	AIN'T EASY Red Bow	Rachel Farley	3.238	-0.029	789	20	35
37	41	9	THE SIMPLE LIFE MCA Nashville	Drake White	2.698	+0.415	652	54	37
38	42	8	SEE YOU TONIGHT 19/Interscope/Mercury	Scotty McCreery	2.430	+0.363	485	61	42
39	RE-ENTRY		WHEN I SEE THIS BAR Blue Chair/Columbia Nashville	Kenny Chesney	2.307	+2.140	282	257	46
40	46	20	BETTER I DON'T Bigger Picture	Chris Janson	2.110	+0.263	507	30	41
41	45	12	UP ALL NIGHT Capitol Nashville	Jon Pardi	1.971	+0.108	634	41	38
42	48	7	FRIDAY NIGHT EMI Nashville	Eric Paslay	1.963	+0.307	532	44	39
43	43	10	HUSH HUSH RCA Nashville	Pistol Annies	1.914	-0.076	460	-7	43
44	44	12	LOVE IS ALIVE Rodeowave	Phil Vassar	1.868	-0.023	527	25	40
45	47	8	DANCE BABY DANCE Bigger Picture	Chris Cagle	1.741	+0.078	337	20	44
46	50	3	I HOPE IT RAINS Elektra Nashville/WAR	Jana Kramer	1.325	+0.308	319	40	45
47	51	2	WHATEVER SHE'S GOT MCA Nashville	David Nail	1.091	+0.190	277	64	47
48	58	2	THERE'S THE SUN Arista Nashville	Kix Brooks	0.943	+0.386	150	28	57
49	56	2	BOURBON IN KENTUCKY Capitol Nashville	Dierks Bentley	0.887	+0.262	141	32	58
50	52	14	PLAYIN WITH FIRE Cold River	Katie Armiger	0.833	-0.013	271	-11	49
51	53	2	WILD IN YOUR SMILE Broken Bow	Dustin Lynch	0.821	+0.030	274	55	48
52	57	2	SOMEONE SOMEWHERE TONIGHT Black River	Kellie Pickler	0.785	+0.166	266	80	50
53	NEW		IF YOU EVER GET LONELY RCA Nashville	Love And Theft	0.730	+0.420	197	120	54
54	NEW		WASTING ALL THESE TEARS Republic Nashville	Cassadee Pope	0.717	+0.299	110	53	-
55	49	9	HO HEY ABC Studios/Lions Gate/Big Machine	Lennon & Maisy	0.705	-0.513	235	-76	52
56	55	13	THANK A FARMER Broken Bow	James Wesley	0.638	-0.046	164	-54	56
57	59	4	WATCH THE WORLD END Show Dog-Universal	Trace Adkins Featuring Colbie Caillat	0.628	+0.072	186	5	55
58	54	3	CHASE A LITTLE LOVE Average Joes	LoCash Cowboys	0.622	-0.065	115	-12	-
59	60	5	LUCKY SOMETIMES HitShop	Weston Burt	0.541	+0.030	263	-9	51
60	RE-ENTRY		STILL ROLLIN' Redneck	Gretchen Wilson	0.466	+0.037	130	-13	59

## BILLBOARD COUNTRY AIRPLAY PANEL – 130 STATIONS

Akron, Ohio	WQMX	Detroit	WYCD	Louisville, Ky.	WAMZ	Reno, Nev.	KBUL
Albany, N.Y.	WGNA	Ft. Myers, Fla.	WCKT	WQNU	Riverside, Calif.	KFRG	
Albuquerque, N.M.	KRST		WWGR	Madison, Wis.	WWQM	Roanoke, Va.	WLSL
Asheville, N.C.	WKSF	Ft. Wayne, Ind.	WQHK	McAllen, Texas	KTEX	Rochester, N.Y.	WBEE
Atlanta	WKHX	Fresno, Calif.	KSKS	Memphis	WGKX	Sacramento, Calif.	KNCJ
	WUBL	Gainesville, Fla.	WOGK	Miami	WKIS		KNTY
Augusta, Ga.	WKXC	Grand Rapids, Mich.	WBCT	Milwaukee	WMIL	St. Louis	KSD
Austin, Texas	KASE	Greensboro, N.C.	WPAW	Minneapolis	KEYE		WIL
Bakersfield, Calif.	KUZZ		WTQR		KMNB	Salt Lake City	KEGA
Baltimore	WPOC	Greenville, S.C.	WESC	Mobile, Ala.	WKSJ		KSPK
Baton Rouge, La.	WYNK	Harrisburg, Pa.	WSSL	Monmouth/Ocean, N.J.	WKMK	San Antonio, Texas	KUBL
Birmingham, Ala.	WDXB	Hartford, Conn.	WRBT	Nashville	WSIX		KAJA
Boise, Idaho	KAWO	Houston	WWYZ	New Bern, N.C.	WRNS	San Diego	KCYO
Boston	WKLW		KILT	New Orleans	WNOE	San Jose, Calif.	KSON
Buffalo, N.Y.	WYRK	Huntsville, Ala.	KKBQ	New York	WNSH	Santa Rosa, Calif.	KRTY
Charleston, S.C.	WCKN	Indianapolis	WDRM	Norfolk, Va.	WGH	Sarasota, Fla.	KFGY
	WEZL		WFMS	Oklahoma City, Okla.	WUSH	Seattle	WCTO
Charleston, W. Va.	WQBE	Jacksonville, Fla.	WLHK		KJKE		KKWF
Charlotte, N.C.	WKKT		WGNE		KTST	Shreveport, La.	KMPS
	WSOC	Johnson City, Tenn.	WQJK	Omaha, Neb.	KXKT	Spokane, Wash.	KXKS
Chattanooga, Tenn.	WUSY	Kansas City	WXBQ	Orlando, Fla.	WWKA	Springfield, Mass.	KXLY
Chicago	WUSN		KBEQ	Philadelphia	WXTU	Springfield, Mo.	WRNX
Cincinnati	WUBE		WDAF	Phoenix	KMLE	Syracuse, N.Y.	KTTS
Cleveland	WGAR	Knoxville, Tenn.	KFKF	Pittsburgh	KNIX	Tampa, Fla.	WBBS
Colorado Springs, Colo.	KATC	Lafayette, La.	WCYQ		WDSY	Tulsa, Okla.	WFUS
Columbia, S.C.	WCOS	Lakeland, Fla.	KMDL	Portland, Maine	WOGI		WQYK
Columbus, Ohio	WCOL	Las Vegas	WPCV	Portland, Ore.	WPOR	Washington, D.C.	KVGO
Corpus Christi, Texas	KRYS	Lexington, Ky.	KCYE		WTHT	West Palm Beach, Fla.	KWEN
Dallas	KSCS	Little Rock, Ark.	KWNR		KUPL	Wichita, Kan.	WIRK
Denver	KWOF	Los Angeles	WBUL	Providence, R.I.	KWJJ	Wilmington, Del.	KFDI
	KYGO		KSSN	Raleigh, N.C.	WCTK	York, Pa.	WGTY
Des Moines, Iowa	KHKI		KKGO		WQDR		





AIRPLAY  
MONITORED BY  
nielsen  
BDS

**COUNTRY**

**MOST ADDED™**

TITLE Imprint/Label	Artist	ADDS
ROUND HERE Republic Nashville	Florida Georgia Line	26
PARKING LOT PARTY Curb	Lee Brice	21
WHEN I SEE THIS BAR Blue Chair/Columbia Nashville	Kenny Chesney	18
FUZZY MCA Nashville	Randy Rogers Band	10
AW NAW RCA Nashville	Chris Young	9
SOMEONE SOMEWHERE TONIGHT Black River	Kellie Pickler	8
IF YOU EVER GET LONELY RCA Nashville	Love And Theft	8
LITTLE BIT OF EVERYTHING Hit Red/Capitol Nashville	Keith Urban	7
BLOWIN' SMOKE Mercury	Kacey Musgraves	7
SUNNY AND 75 Red Bow	Joe Nichols	7

**MOST INCREASED AUDIENCE**

TITLE Imprint/Label	Artist	GAIN (IN MILLIONS)
CRASH MY PARTY Capitol Nashville	Luke Bryan	+4.810
DONE. Republic Nashville	The Band Perry	+3.776
ANYWHERE WITH YOU RCA Nashville	Jake Owen	+3.557
BOYS 'ROUND HERE Warner Bros./WMN	Blake Shelton Feat. Pistol Annies & Friends	+3.441
RUNNIN' OUTTA MOONLIGHT Stoney Creek	Randy Houser	+3.223
DON'T YA Atlantic/WMN	Brett Eldredge	+3.152
LITTLE BIT OF EVERYTHING Hit Red/Capitol Nashville	Keith Urban	+2.831
I WANT CRAZY Atlantic/WMN	Hunter Hayes	+2.499
ROUND HERE Republic Nashville	Florida Georgia Line	+2.299
WHEN I SEE THIS BAR Blue Chair/Columbia Nashville	Kenny Chesney	+2.140

**MOST INCREASED PLAYS**

TITLE Imprint/Label	Artist	GAIN
CRASH MY PARTY Capitol Nashville	Luke Bryan	+599
DONE. Republic Nashville	The Band Perry	+468
ANYWHERE WITH YOU RCA Nashville	Jake Owen	+411
ROUND HERE Republic Nashville	Florida Georgia Line	+390
LITTLE BIT OF EVERYTHING Hit Red/Capitol Nashville	Keith Urban	+373
BOYS 'ROUND HERE Warner Bros./WMN	Blake Shelton Feat. Pistol Annies & Friends	+345
RUNNIN' OUTTA MOONLIGHT Stoney Creek	Randy Houser	+333
DON'T YA Atlantic/WMN	Brett Eldredge	+297
GOODBYE TOWN Capitol Nashville	Lady Antebellum	+287
SEE YOU AGAIN 19/Arista Nashville	Carrie Underwood	+285

**COUNTRY INDICATOR**

**MOST ADDED™**

TITLE Imprint/Label	Artist	ADDS
WHEN I SEE THIS BAR Blue Chair/Columbia Nashville	Kenny Chesney	41
ROUND HERE Republic Nashville	Florida Georgia Line	32
AW NAW RCA Nashville	Chris Young	12
WASTING ALL THESE TEARS Republic Nashville	Cassadee Pope	12
BOURBON IN KENTUCKY Capitol Nashville	Dierks Bentley	12
SUNNY AND 75 Red Bow	Joe Nichols	9
NIGHT TRAIN Broken Bow	Jason Aldean	9
IT GOES LIKE THIS Valory	Thomas Rhett	6
IF YOU EVER GET LONELY RCA Nashville	Love And Theft	6
PARKING LOT PARTY Curb	Lee Brice	4

**MOST INCREASED AUDIENCE**

TITLE Imprint/Label	Artist	GAIN (IN MILLIONS)
WHEN I SEE THIS BAR Blue Chair/Columbia Nashville	Kenny Chesney	+0.590
CRASH MY PARTY Capitol Nashville	Luke Bryan	+0.542
ROUND HERE Republic Nashville	Florida Georgia Line	+0.499
DONE. Republic Nashville	The Band Perry	+0.384
LITTLE BIT OF EVERYTHING Hit Red/Capitol Nashville	Keith Urban	+0.309
RUNNIN' OUTTA MOONLIGHT Stoney Creek	Randy Houser	+0.306
MORE THAN MILES Valory	Brantley Gilbert	+0.299
BOYS 'ROUND HERE Warner Bros./WMN	Blake Shelton Feat. Pistol Annies & Friends	+0.298
SEE YOU AGAIN 19/Arista Nashville	Carrie Underwood	+0.295
POINT AT YOU Valory	Justin Moore	+0.286

**MOST INCREASED PLAYS**

TITLE Imprint/Label	Artist	GAIN
WHEN I SEE THIS BAR Blue Chair/Columbia Nashville	Kenny Chesney	+549
ROUND HERE Republic Nashville	Florida Georgia Line	+395
LITTLE BIT OF EVERYTHING Hit Red/Capitol Nashville	Keith Urban	+287
BOURBON IN KENTUCKY Capitol Nashville	Dierks Bentley	+236
CRASH MY PARTY Capitol Nashville	Luke Bryan	+212
REDNECK CRAZY Columbia Nashville	Tyler Farr	+166
AW NAW RCA Nashville	Chris Young	+160
PARKING LOT PARTY Curb	Lee Brice	+156
SEE YOU AGAIN 19/Arista Nashville	Carrie Underwood	+147
I WANT CRAZY Atlantic/WMN	Hunter Hayes	+141



The Country Music Industry's Must-Have Source for News, Analysis and Chart Info. Sign up for FREE delivery every Monday and Thursday

billboard Country UPDATE





AIRPLAY  
MONITORED BY  
nielsen  
BDS

### NEW AND ACTIVE

TITLE Imprint/Label	Artist	TOTAL AUDIENCE	TOTAL STATIONS	ADDS
SOMETHIN' LIKE SOMETHIN' Streamsound	Dakota Bradley	0.430	24	2
EVERYTHING I SHOULDN'T BETHINKING ABOUT Stoney Creek	Thompson Square	0.365	6	5
NIGHT TRAIN Broken Bow	Jason Aldean	0.355	2	2
YOU GOT ME Crescendo/Warner Bros./WMN	Ashley Monroe	0.326	4	1
HUNGOVER & HARD UP EMI Nashville	Eric Church	0.274	2	0
BAREFOOT AND BUCKWILD 19/Interscope/Mercury	Lauren Alaina	0.254	6	5

### INDICATOR NEW AND ACTIVE

TITLE Imprint/Label	Artist	TOTAL PLAYS	TOTAL STATIONS	ADDS
IF YOU EVER GET LONELY RCA Nashville	Love And Theft	120	10	6
SO DAMN BEAUTIFUL American Roots	Chris Weaver Band	88	7	2
FUZZY MCA Nashville	Randy Rogers Band	77	6	2
THE DASH SSM	Branch & Dean	73	8	3
KICK A LITTLE DIRT AROUND Highway South	David Shelby	70	8	1
I HOPE IT RAINS Elektra Nashville/WAR	Jana Kramer	64	4	1

### RECURRENTS

THIS WEEK	TITLE Imprint/Label	Artist	TOTAL AUD. (IN MILLIONS)
1	GET YOUR SHINE ON Republic Nashville	Florida Georgia Line	23.508
2	DOWNTOWN Capitol Nashville	Lady Antebellum	21.400
3	MAMA'S BROKEN HEART RCA Nashville	Miranda Lambert	19.227
4	CAN'T SHAKE YOU Emblem/Warner Bros./WAR	Gloriana	16.520
5	CRUISE Republic Nashville	Florida Georgia Line	15.018
6	SURE BE COOL IF YOU DID Warner Bros./WMN	Blake Shelton	14.933
7	GIVE IT ALL WE GOT TONIGHT MCA Nashville	George Strait	13.883
8	IF I DIDN'T HAVE YOU Stoney Creek	Thompson Square	12.818
9	AMERICAN BEAUTIFUL Arista Nashville	The Henningsens	12.653
10	I CAN TAKE IT FROM THERE RCA Nashville	Chris Young	11.165

### GOING FOR ADDS

6/17

**ANDY GIBSON**  
Best Thing  
Curb

**GEORGE DUCAS**  
Cowtown  
Propel

**JUSTINE BLAZER**  
Amen For The Weekend  
La Blaze

**KAYLA CALABRESE**  
Kiss Me  
Go Time

**RICK PATIN**  
Americana Gold  
Rick Patin

**TRACY LAWRENCE**  
Footprints On The Moon  
Lawrence

6/24

**AARON LEWIS**  
Granddaddy's Gun  
Blaster

**DYLAN SCOTT**  
Makin' This Boy Go Crazy  
Sidewalk

**GWEN SEBASTIAN**  
Suitcase  
Flying Island

**JASON ALDEAN**  
Night Train  
Broken Bow

**MIRANDA LAMBRESE**  
All Kinds Of Kinds  
RCA Nashville

**RACHELE LYNÆ**  
Fishin' For Something  
Momentum

7/1

**ELI YOUNG BAND**  
Drunk Last Night  
Republic Nashville



## TEXAS REGIONAL RADIO REPORT

WEEK ENDING JUNE 9, 2013

THIS WEEK	LAST WEEK	WKS ON CHART	TITLE (Label)	ARTIST	TW SPINS	SPINS +/-	THIS WEEK	LAST WEEK	WKS ON CHART	TITLE (Label)	ARTIST	TW SPINS	SPINS +/-
1	1	11	WHISKEY BABY (Almost Country) ★★2 weeks at 1★	Casey Donahew Band	1833	201	16	8	21	BLAME IT ON WAYLON (A-Blake/Smith)	Jason Cassidy	880	-250
2	4	11	DARK AND DIRTY MILE (Independent)	Jason Boland & The Stragglers	1376	5	17	26	12	IS ANYBODY GOING TO SAN ANTOINE (Independent)	Eleven Hundred Springs	830	79
3	5	9	SHE LIKES THE BEATLES (Independent)	William Clark Green	1351	85	18	30	6	OVERNIGHT SUCCESS (BE)	Zane Williams	777	85
4	7	11	FUZZY (MCA Nashville)	Randy Rogers Band	1287	143	19	28	12	DID YOU EVER TURN AROUND (Cypress Creek/Tenacity)	Rosehill	752	35
5	6	12	THE ONLY DRUG (Average Joes)	JB and The Moonshine Band	1279	70	20	20	20	ALL ABOUT THE MUSIC (Black Gold)	Anson Carter	745	-73
6	2	17	I DON'T CARE ABOUT YOU (Independent)	Cody Johnson	1168	-353	21	14	22	SHE AIN'T LEAVIN' (Texas Evolution)	Mark McKinney	741	-158
7	9	17	SHE LIKES MONEY, HE LIKES LOVE (No Big Deal)	Reckless Kelly	1114	19	22	52	3	BEFORE THE DEVIL KNOWS WE'RE DEAD (Independent)	Turnpike Troubadours	737	254
8	10	9	SILVERADO BENCH SEAT (Independent)	Granger Smith	1109	109	23	29	15	EASY TO SAY GOODBYE (Independent)	Brian Keane	712	-3
9	3	16	SOMETHIN' AIN'T ALWAYS BETTER THAN NOTHIN' (Smith)	Deryl Dodd	1090	-386	24	33	6	SUMMER AND SIXTEEN (AMP)	Josh Grider	705	65
10	11	17	KEEP THE WOLVES AWAY (Independent)	Uncle Lucius	1009	53	25	17	21	HAGGARD (Independent)	Brandon Rhyder	695	-178
11	12	14	PRAYER FOR THE LONELY (Independent)	Cody Canada & The Departed	964	16	26	23	21	FADE MY SHADE OF BLACK (Independent)	Statesboro Revue	684	-93
12	16	13	I DIDN'T PICK THIS LIFE (Independent)	Mario Flores	960	80	27	36	12	HARD TO LET YOU GO (Independent)	Kyle Bennett	678	43
13	13	17	MIDDLE AMERICAN BLUES (Independent)	Chris Brazeal Band	937	6	28	34	10	BYE, BYE CITY LIGHTS (Independent)	Ray Johnston	675	37
14	19	10	FOR YOU I DO (Fun All Wrong)	Roger Creager	926	101	29	31	11	NEVER GONNA HEAR IT FROM ME (Winding Road)	Jamie Richards	674	-9
15	15	19	ME AND THE WHISKEY (598)	The Damn Quails	880	-1	30	18	19	WHAT COWBOYS DO (AMP)	Matt Caldwell	672	-189

Texas Regional Radio Report Top 100 is compiled from weekly online playlist reports from 86 radio stations located in Texas and surrounding states, including reports from specialty shows, internet and satellite radio outlets. Songs are ranked by total plays. For tracking, complete chart methodology and more information, visit www.texasregionalradio.com, or contact Dave Smith at 817-283-7984. Copyright 2013, Texas Regional Radio Report



# billboard Country Indicator

THIS WEEK	LAST WEEK	WKS ON CHART	TITLE Imprint/Label	Artist	PLAYS		AUDIENCE (IN MILLIONS)
					THIS WEEK	+/-	THIS WEEK
1	2	21	ANYWHERE WITH YOU RCA Nashville	Jake Owen	3443	+94	4.236
2	3	15	BEAT THIS SUMMER Arista Nashville	Brad Paisley	3432	+85	4.118
3	4	11	BOYS 'ROUND HERE Warner Bros./WMN	Blake Shelton Feat. Pistol Annies & Friends	3397	+118	4.449
4	1	17	HIGHWAY DON'T CARE Big Machine	Tim McGraw With Taylor Swift	3291	-197	4.246
5	7	10	CRASH MY PARTY Capitol Nashville	Luke Bryan	3207	+212	3.857
6	6	15	DONE. Republic Nashville	The Band Perry	3194	+136	3.730
7	5	17	LIKE JESUS DOES EMI Nashville	Eric Church	2655	-583	3.480
8	9	17	JUMP RIGHT IN Atlantic/Southern Ground	Zac Brown Band	2596	+108	2.998
9	10	20	HEY PRETTY GIRL MCA Nashville	Kip Moore	2540	+79	3.005
10	12	10	SEE YOU AGAIN 19/Arista Nashville	Carrie Underwood	2366	+147	2.855
11	11	28	MORE THAN MILES Valory	Brantley Gilbert	2354	+119	3.247
12	13	9	I WANT CRAZY Atlantic/WMN	Hunter Hayes	2290	+141	2.688
13	14	23	ALL OVER THE ROAD Mercury	Easton Corbin	2252	+133	2.759
14	15	17	RUNNIN' OUTTA MOONLIGHT Stoney Creek	Randy Houser	2205	+141	2.587
15	19	4	LITTLE BIT OF EVERYTHING Hit Red/Capitol Nashville	Keith Urban	2001	+287	2.411
16	17	25	DON'T YA Atlantic/WMN	Brett Eldredge	1950	+90	2.350
17	16	16	PIECES MCA Nashville	Gary Allan	1930	+54	2.094
18	18	13	POINT AT YOU Valory	Justin Moore	1876	+115	2.330
19	20	5	GOODBYETOWN Capitol Nashville	Lady Antebellum	1707	+117	1.935
20	22	13	HEY GIRL Mercury	Billy Currington	1369	+70	1.612
21	21	10	YOUR SIDE OF THE BED Capitol Nashville	Little Big Town	1360	+10	1.469
22	24	17	REDNECK CRAZY Columbia Nashville	Tyler Farr	1354	+166	1.420
23	26	8	PARKING LOT PARTY Curb	Lee Brice	1243	+156	1.371
24	25	11	BLOWIN' SMOKE Mercury	Kacey Musgraves	1232	+83	1.143
25	30	5	AW NAW RCA Nashville	Chris Young	923	+160	0.976
26	28	6	IT GOES LIKE THIS Valory	Thomas Rhett	914	+86	1.184
27	27	19	IF YOU WANT SOME Show Dog-Universal	Joel Crouse	905	+22	0.729
28	29	13	EASY Warner Bros./WMN	Sheryl Crow	839	+32	0.884
29	37	3	ROUND HERE Republic Nashville	Florida Georgia Line	802	+395	0.824
30	31	21	COULD IT BE Warner Bros./WAR	Charlie Worsham	753	+99	0.846

## BILLBOARD COUNTRY INDICATOR PANEL — 87 STATIONS

Abilene, Texas	KEAN	Fayetteville, N.C.	WKML	Laurel, Miss.	WBBN	San Luis Obispo, Calif.	KKJG
Alexandria, La.	KRRV	Flagstaff, Ariz.	KAFF	Lebanon, N.H.	WXXK	Santa Barbara, Calif.	KRAZ
Amarillo, Texas	KGNC	Florence, Ala.	WXFL	Lincoln, Neb.	KFGE	Santa Maria, Calif.	KSNI
Atlantic City, N.J.	WPUR	Florence, S.C.	WEGX	Lubbock, Texas	KLLL	Sheboygan, Wis.	WBFM
Beaumont, Texas	KYKR	Ft. Collins, Colo.	KUAD	Lufkin, Texas	KYKS	Sioux City, Iowa	KSUX
Beckley, W. Va.	WJLS	Ft. Smith, Ark.	KTCS	Medford, Ore.	KRWQ	South Bend, Ind.	WBYT
Biloxi, Miss.	WZKX	Frederick, Md.	WFRE	Meridian, Miss.	WOKK	Terre Haute, Ind.	WTHI
Bloomington, Ill.	WIBL	Fredericksburg, Va.	WFLS	Morgantown, W. Va.	WKKW	Topeka, Kan.	WIBW
Bluefield, W. Va.	WHKX	Green Bay, Wis.	WNCY	Muskegon, Mich.	WMUS	Traverse City, Mich.	WTCM
Burlington, Vt.	WOKO	Hagerstown, Md.	WAYZ	Myrtle Beach, S.C.	WGTR	Tupelo, Miss.	WWZD
Charleston, W. Va.	WKWS	Hot Springs, Ark.	KQUS	New London, Conn.	WCTY	Utica, N.Y.	WFRG
College Station, Texas	KAGG	Huntington, Ky.	WDGG	Odessa, Texas	KHKX	Visalia, Calif.	KJUG
Columbus, Ga.	WKCN	Huntington, W. Va.	WTCR	Palm Springs, Calif.	KPLM	Waco, Texas	WACO
Cookeville, Tenn.	WGSQ	Idaho Falls, Idaho	KTHK	Peoria, Ill.	WXCL	Wausau, Wis.	WDEZ
Dothan, Ala.	WTVY	Jackson, Miss.	WUSJ	Poughkeepsie, N.Y.	WRWD	Wheeling, W. Va.	WOVK
Duluth, Minn.	KKCB	Janesville, Wis.	WJVL	Rapid City, S.D.	KOUT	Williamsport, Pa.	WILQ
Eau Claire, Wis.	WAXX	Jonesboro, Ark.	KDXY	Rocky Mount, N.C.	WDWG	Yakima, Wash.	KXDD
Elizabeth City, N.C.	WRSF	Joplin, Mo.	KIXQ	Saginaw, Mich.	WCEN	Youngstown, Ohio	WWGY
Erie, Pa.	WTWF	Kalamazoo, Mich.	WNWN	St. Cloud, Minn.	KZPK	Dial Global	HOT COUNTRY
Eugene, Ore.	KKNU	Kalispell, Mont.	KDBR	Salina, Kan.	KYEZ		MAINSTREAM COUNTRY
Evansville, Ind.	WKDQ	Lafayette, Ind.	WKOA	Salisbury, Md.	WKTT	Music Choice	TODAY'S COUNTRY
Fargo, N.D.	KVOX	Lake Havasu/Bullhead City, Ariz.	KFLG	San Angelo, Texas	KGKL	Sirius XM	THE HIGHWAY



# billboard Country Indicator

THIS WEEK	LAST WEEK	WKS ON CHART	TITLE Imprint/Label	Artist	PLAYS		AUDIENCE (IN MILLIONS)
					THIS WEEK	+/-	THIS WEEK
31	32	13	LOVE IS ALIVE Rodeowave	Phil Vassar	618	+12	0.587
32	NEW		WHEN I SEE THIS BAR Blue Chair/Columbia Nashville <b>★★ Hot Shot Debut/Most Increased Plays/Most Added ★★</b>	Kenny Chesney	617	+549	0.689
33	33	14	UP ALL NIGHT Capitol Nashville	Jon Pardi	591	+28	0.461
34	34	8	FRIDAY NIGHT EMI Nashville	Eric Paslay	562	+21	0.385
35	35	36	OUTTA MY HEAD Bigger Picture	Craig Campbell	560	+66	0.624
36	38	5	SUNNY AND 75 Red Bow	Joe Nichols	468	+97	0.458
37	36	12	THE SIMPLE LIFE MCA Nashville	Drake White	445	+29	0.329
38	48	2	BOURBON IN KENTUCKY Capitol Nashville	Dierks Bentley	404	+236	0.265
39	39	11	HUSH HUSH RCA Nashville	Pistol Annies	351	+4	0.358
40	40	12	BETTER RPM	Maggie Rose	336	+24	0.424
41	41	5	WATCH THE WORLD END Show Dog-Universal	Trace Adkins Feat. Colbie Caillat	310	+26	0.214
42	43	3	SOMEONE SOMEWHERE TONIGHT Black River	Kellie Pickler	289	+39	0.138
43	42	7	CHASE A LITTLE LOVE Average Joes	LoCash Cowboys	270	+11	0.206
44	44	6	YELLOW BRICK ROAD Curb/Sidewalk	Morgan Frazier	232	+2	0.189
45	45	18	BETTER I DON'T Bigger Picture	Chris Janson	190	+5	0.245
46	47	15	DIRT ROAD ROMANCE Millstar	Outshyne	178	+4	0.047
47	50	4	FISHIN' FOR SOMETHING Momentum	Rachele Lynae	177	+19	0.085
48	NEW		WHATEVER SHE'S GOT MCA Nashville	David Nail	172	+78	0.145
49	57	2	WILD IN YOUR SMILE Broken Bow	Dustin Lynch	170	+36	0.165
50	58	3	SEE YOU TONIGHT 19/Interscope/Mercury	Scotty McCreery	161	+28	0.208
51	52	8	HAPPY ENDING Blue Bolt	Hoyt Hughes	159	+7	0.071
52	46	8	AIN'T EASY Red Bow	Rachel Farley	156	-25	0.171
53	54	7	DANCE BABY DANCE Bigger Picture	Chris Cagle	154	+8	0.188
54	53	9	AFTER BEAUTIFUL Fox Hill	One Night Rodeo	154	+5	0.032
55	51	6	SOMETHIN' LIKE SOMETHIN' Streamsound	Dakota Bradley	146	-12	0.122
56	60	2	SALT LIFE McGhee	Chuck Wicks	138	+26	0.033
57	NEW		EVERYTHING I SHOULDN'T BE THINKING ABOUT Stoney Creek	Thompson Square	128	+67	0.067
58	NEW		WHISKEY BABY Almost Country/Grassroots	Casey Donahew Band	128	+16	0.095
59	NEW		WASTING ALL THESE TEARS Republic Nashville	Cassadee Pope	126	+112	0.110
60	NEW		WHEN THE LIGHTS GO OUT (TRACIE'S SONG) Nada Dinero	Mark Chesnutt	122	+26	0.012



## access the best in music

AVAILABLE FREE TO CURRENT BILLBOARD SUBSCRIBERS

on the NEW Billboard magazine iPad® edition

Playable Billboard Charts . Videos . Photo Galleries . Cover Stories . Special Reports Reviews . Interviews . Event Coverage & MORE



iPad is a trademark of Apple Inc., registered in the U.S. and other countries. App Store is a service mark of Apple Inc.





# CALLOUT AMERICA

WEEK ENDING JUNE 9, 2013

THIS WEEK	LAST WEEK	TITLE Imprint/Label	Artist	TOTAL PASSION	POSITIVE	INDEX	NEUTRAL	DISLIKE	STRONGLY DISLIKE
1	3	BOYS 'ROUND HERE Warner Bros/WMN	Blake Shelton	48.1%	81.3%	4.19	9.2%	9.0%	0.5%
2	2	ANYWHERE WITH YOU RCA Nashville	Jake Owen	38.4%	81.3%	4.13	12.7%	5.5%	0.5%
3	1	BEAT THIS SUMMER Arista Nashville	Brad Paisley	41.4%	78.8%	4.13	14.5%	6.2%	0.5%
4	5	OUTTA MY HEAD Bigger Picture	Craig Campbell	34.9%	78.1%	4.01	10.7%	11.0%	0.2%
5	10	HIGHWAY DON'T CARE Big Machine	Tim McGraw with Taylor Swift	39.4%	76.3%	4.00	10.5%	10.5%	2.7%
6	7	MORE THAN MILES Valory	Brantley Gilbert	31.4%	76.1%	3.94	10.5%	13.0%	0.5%
7	6	RUNNIN' OUTTA MOONLIGHT Stoney Creek	Randy Houser	31.9%	75.6%	3.95	12.5%	11.5%	0.5%
8	15	JUMP RIGHT IN Southern Ground/Atlantic	Zac Brown Band	32.2%	74.8%	3.93	11.5%	13.0%	0.7%
9	9	ALL OVER THE ROAD Mercury	Easton Corbin	35.9%	74.3%	3.95	11.0%	14.0%	0.7%
10	14	POINT AT YOU Valory	Justin Moore	36.9%	74.1%	3.90	5.2%	20.2%	0.5%
11	11	DON'T YA Atlantic/WMN	Brett Eldredge	38.9%	73.8%	3.92	7.7%	16.2%	2.2%
12	8	CAN'T SHAKE YOU Emblem/Warner Bros/WAR	Gloriana	32.2%	73.8%	3.90	11.0%	14.0%	1.2%
13	16	SEE YOU AGAIN 19/Arista Nashville	Carrie Underwood	34.9%	73.1%	3.89	9.2%	16.2%	1.5%
14	12	LIKE JESUS DOES EMI Nashville	Eric Church	38.4%	72.8%	3.96	12.2%	14.5%	0.5%
15	13	IT GOES LIKE THIS Valory	Thomas Rhett	30.2%	72.3%	3.90	16.2%	10.5%	1.0%
16	18	LOVE IS ALIVE Rodeowave	Phil Vassar	35.2%	71.8%	3.93	14.0%	14.0%	0.2%
17	19	EASY Warner Bros/WMN	Sheryl Crow	30.9%	71.6%	3.84	10.5%	17.0%	1.0%
18	20	MORE TRUCKS THAN CARS Black River	Craig Morgan	32.4%	71.1%	3.86	12.2%	15.7%	1.0%
19	17	HEY PRETTY GIRL MCA Nashville	Kip Moore	32.7%	70.8%	3.85	11.7%	16.5%	1.0%
20	21	AMERICAN BEAUTIFUL Arista Nashville	The Henningsens	24.7%	70.6%	3.75	11.0%	16.7%	1.7%
21	22	PIECES MCA Nashville	Gary Allan	25.7%	70.1%	3.81	15.2%	14.2%	0.5%
22	24	CRASH MY PARTY Capitol Nashville	Luke Bryan	29.4%	69.6%	3.77	10.2%	18.7%	1.5%
23	26	HEY GIRL Mercury	Billy Currington	23.2%	68.8%	3.82	21.7%	8.7%	0.7%
24	25	BLOWIN' SMOKE Mercury	Kacey Musgraves	28.2%	67.8%	3.71	9.7%	19.7%	2.7%
25	23	DONE Republic Nashville	The Band Perry	30.7%	67.1%	3.68	7.7%	20.4%	4.7%
26	27	IF YOU WANT SOME Show Dog-Universal	Joel Crouse	22.7%	65.3%	3.64	11.7%	21.7%	1.2%
27	28	AW NAW RCA Nashville	Chris Young	22.0%	63.5%	3.71	23.0%	12.5%	1.0%
28	29	PARKING LOT PARTY Curb	Lee Brice	24.7%	62.8%	3.60	13.0%	21.2%	3.0%
29	30	LITTLE BIT OF EVERYTHING Capitol Nashville	Keith Urban	29.0%	62.5%	3.77	23.5%	13.5%	0.5%
30	31	BETTER RPM	Maggie Rose	23.7%	60.3%	3.59	17.5%	19.5%	2.7%
31	—	FRIDAY NIGHT EMI Nashville	Eric Paslay	19.7%	60.1%	3.61	21.7%	17.2%	1.0%
32	32	I WANT CRAZY Atlantic/WMN	Hunter Hayes	20.9%	58.6%	3.48	12.7%	25.9%	2.7%
33	33	REDNECK CRAZY Columbia Nashville	Tyler Farr	18.5%	57.1%	3.51	20.7%	20.2%	2.0%
34	35	AIN'T EASY Red Bow	Rachel Farley	17.2%	56.9%	3.41	14.0%	25.2%	4.0%
35	34	YOUR SIDE OF THE BED Capitol Nashville	Little Big Town	18.5%	53.4%	3.36	17.0%	23.7%	6.0%

The Callout America sample is 450 persons in each weekly report. Sample is 50% Male/Female and taken from 20 U.S. Markets. Demos are evenly balanced in 18-24, 25-34, 35-44 and 45-54 cells. Song scores are on a 1 to 5 differential with "1" meaning strong dislike and "5" meaning like it a lot. The positive index is an average of all 1 to 5 scores. Total Positive is the combined 4 and 5 scores. Market breakdowns by geographical region are: MIDWEST: Cincinnati, Indianapolis, Kansas City, Omaha and Wichita. SOUTH: Atlanta, Charleston, Charlotte, Mobile/Pensacola and Nashville. EAST: Philadelphia, Pittsburgh, Providence RI, Rochester, Virginia Beach. WEST: Colorado Springs, Houston, Modesto, Phoenix and Portland OR.

## CHART LEGEND

### RANKINGS

Country Airplay is ranked by total audience impressions for the week ending Sunday based on monitored airplay of 130 stations by Nielsen BDS. Audience totals on the chart are derived, in part, using certain Arbitron Inc. copyrighted Persons 12+ audience estimates (under license © 2013, Arbitron Inc.). Country Indicator is tabulated using reported playlists and Nielsen BDS-monitored airplay at 87 stations, ranked by total plays.

### BULLETS

● Awarded on Country Airplay to titles gaining audience or remaining flat from the previous week. A song will also receive a bullet if its percentage loss in audience does not exceed the percentage of monitored station downtime for the format.

Titles that decline in audience but increase in detections will also receive a bullet if the total audience erosion for the week does not exceed 3%. Bullets are awarded on Country Indicator to titles gaining plays or remaining flat from the previous week.

### TIES

On Country Airplay, if two songs are tied in total audience, the song with the larger increase in audience is placed first. On Country Indicator, if two songs are tied in total plays, the song with the larger increase in plays is placed first.

### RECURRENTS

On Country Airplay, descending titles below No. 10 in either audience or detections are moved to recurrent after 20 weeks, provided that they are not

still gaining enough audience points to bullet or if they rank below No. 10 and post a third consecutive week of audience decline, regardless of total chart weeks. On Country Indicator, descending, non-bulleted titles below No. 10 are moved to recurrent after 20 weeks.

### HOT SHOT DEBUT

Awarded to the highest-ranking new entry on Country Airplay and Country Indicator, respectively.

### MOST ADDED

The total number of new adds officially reported to Billboard by each reporting station, or by an automatic-add threshold (seven plays for the first time in a chart tracking week, according to Nielsen BDS) for stations that do not report adds.

### MOST INCREASED AUDIENCE/PLAYS

Most Increased Audience on Country Airplay and Most Increased Plays on Country Indicator list the songs with the greatest week-to-week increases in total audience or plays, respectively.

### AIRPOWER

Awarded on Country Airplay to titles ranking inside top 20 in plays and audience rankings for the first time, with increases in both plays and audience.

### BREAKER

Awarded on Country Airplay to titles achieving airplay (at least one detection) at 60% of reporting stations for the first time.



# billboard Country Airplay Index

**TITLE** Publishing-Licensing Org.  
(Songwriter) **Chart Position**

## A

**AIN'T EASY** Peermusic III, Ltd., BMI/Rockin Rose Publishing, BMI (R.Farley) **36**

**ALL OVER THE ROAD** Carson Chamberlain Music, BMI/BMG Rights Management (US) LLC, ASCAP/External Combustion Music, ASCAP/Out Of The Taperoom Music, ASCAP/Songs Of Southside Independent Music Publishing, L/Steel Wheels Music, BMI/Kiribone Music, BMI/Big Loud Bucks, BMI (C.Chamberlain, A.Gorley, W.Kirby) **15**

**ANYWHERE WITH YOU** WB Music Corp., ASCAP/Melissa's Money Music Publishing, ASCAP/Get A Load Of This Music, ASCAP/Old Desperados, LLC, ASCAP/NZD Publishing Company, Inc., ASCAP/Carol Vincent And Associates, LLC, ASCAP/EMI Blackwood Music Inc., BMI/Beattyville Music, BMI/Great Day At This Time Music, BMI (B.Hayslip, D.L.Murphy, J.Yeary) **3**

**AW NAW** EMI Blackwood Music Inc., BMI/Maple Kind Music, BMI/EMI April Music, Inc., ASCAP/Sugar Glider Music, ASCAP/External Combustion Music, ASCAP/Songs Of Southside Independent Music Publishing, L/Out Of The Taperoom Music, ASCAP (C.Young, C.DeStefano, A.Gorley) **31**

## B

**BEAT THIS SUMMER** House Of Sea Gayle Music, ASCAP/Words & Music, ASCAP/Songs Of Universal, Inc., BMI/Creative Nation Music, BMI/Twangin And Slangin Songs, BMI (B.Paisley, C.DuBois, L.Laird) **5**

**BETTER** Songs Of RPM, ASCAP/Cal IV Songs, ASCAP/Love Island Music, ASCAP/Ridgedreamer Music, ASCAP (C.Cameron, D.Berg, D.Bryant) **34**

**BETTER I DON'T** Red Vinyl Music, BMI/Buckkilla Music, BMI/Curb Songs, ASCAP/Kelly Roland Music, ASCAP/Pat Price Music, BMI (C.Janson, K.Roland, P.Bunch) **40**

**BLOWIN' SMOKE** Crazy Water Music, ASCAP/Little Blue Egg, ASCAP/Kobalt Music Publishing America, Inc., ASCAP/Universal Music - Careers, BMI/High Powered Machine Music, BMI/Warner-Tamerlane Publishing Corp., BMI/351 Music, BMI (K.McGraves, L.Laird, S.McAnally) **26**

**BOURBON IN KENTUCKY** ole, BMI/Purple Cape Music, BMI/BMG Gold Songs, ASCAP/Bughouse, ASCAP/Dash8 Music, ASCAP (R.Tyndell, L.Lindsey, G.Sampson) **49**

**BOYS 'ROUND HERE** EMI Blackwood Music Inc., BMI/Big Loud Shirt Industries, ASCAP (R.Akins, D.Davidson, C.Wiseman) **2**

## C

**CAROLINA** 27861 Music, BMI/Revelry Music, BMI/Gallo And Landers Music LLC, BMI/EMI Blackwood Music Inc., BMI/Lonely Runner Music, BMI (Parnalee, R.Beato) **35**

**CHASE A LITTLE LOVE** Sony/ATV Tree Publishing, BMI/Pacific Wind Music, SESAC/4T4 Music, SESAC/Songs Of Bug, SESAC/BMG Chrysalis, SESAC (P.Brust, J.Boyer) **58**

**COULD IT BE** Purple Cape Music, BMI/Dad's Retirement Songs, BMI/Black To Black Songs, BMI/I Hope Momma's Listening Music, BMI (C.Warshaw, R.Tyndell, M.Dodson) **27**

**CRASH MY PARTY** Big Red Toe, BMI/Amarillo Sky Songs, BMI/External Combustion Music, ASCAP/Out Of The Taperoom Music, ASCAP/Songs Of Southside Independent Music Publishing, L (R.Clawson, A.Gorley) **4**

## D

**DANCE BABY DANCE** Tunes Of Bigger Picture, ASCAP/EMI Blackwood Music Inc., BMI/Famlove Songs, BMI/Sagequinnjude Music, BMI (C.Cagle, B.Warren, B.Warren) **45**

**DONE** When I Go To The Moon Music, BMI/Famdamily Music, BMI/Rio Bravo Music, Inc., BMI/Castle Bound Music, Inc., SESAC (R.Perry, N.Perry, J.Davidson, J.Bryant) **7**

**DON'T YA** Paris Not France Music, BMI/Dwight Wiles And Co., BMI/EMI April Music, Inc., ASCAP/Sugar Glider Music, ASCAP/External Combustion Music, ASCAP/Out Of The Taperoom Music, ASCAP/Songs Of Southside Independent Music Publishing, L (B.Eldredge, C.DeStefano, A.Gorley) **14**

## E

**EASY** Old Green Bam Publishing, BMI/House Of Sea Gayle Music, ASCAP/Cyrillic Soup, ASCAP/WB Music Corp., ASCAP (S.Crow, C.DuBois, J.Trott) **23**

## F

**FRIDAY NIGHT** Cal IV Entertainment, LLC, BMI/Golden Vault Music, BMI/Wadmalaw Music, BMI (E.Pasley, R.Falcon, R.Crosby) **42**

## G

**GOODBYE TOWN** Beards And Bullets Music, ASCAP/30A Getaway Songs, ASCAP/Kobalt Music Publishing America, Inc., ASCAP/Hobbs Hill Publishing, SESAC/Kobalt Publishing, SESAC/Global Dog Music, ASCAP/Big Yellow Dog Music, ASCAP/Lunelight Music, ASCAP (D.Haywood, C.Kelley, H.Scott, J.Kear) **20**

## H

**HEY GIRL** EMI Blackwood Music Inc., BMI/External Combustion Music, ASCAP/Out Of The Taperoom Music, ASCAP/Songs Of Southside Independent Music Publishing, L/EMI April Music, Inc., ASCAP/Sugar Glider Music, ASCAP (R.Akins, A.Gorley, C.DeStefano) **21**

**HEY PRETTY GIRL** Music Of Stage Three, BMI/Songs Of Cornman, BMI/Roll Through Music, BMI/BMG Chrysalis Music Publishing, BMI/Songs From The Couch, BMI (K.Moore, D.Couch) **11**

**HIGHWAY DON'T CARE** EMI Blackwood Music Inc., BMI/StyleSonic Music, LLC, BMI/Green Vinyl Music, ASCAP/Words & Music, ASCAP/Global Dog Music, ASCAP/Big Yellow Dog Music, ASCAP/Lunelight Music, ASCAP (B.Warren, B.Warren, M.Irwin, J.Kear) **1**

**HO HEY** The Lumineers, BMI/Songs Of Kobalt Music Publishing America, Inc., BMI (J.Fraites, W.Schultz) **55**

**HUSH HUSH** Sony/ATV Tree Publishing, BMI/Pink Dog Publishing, BMI/Reynson Publishing Corp., BMI/Ayden Publishing, BMI/Ten Ten Music Group, Inc., ASCAP/EMI April Music, Inc., ASCAP (M.Lambert, A.Monroe, A.Presley) **43**

## I

**IF YOU EVER GET LONELY** EMI April Music, Inc., ASCAP/Ella Bella Music, ASCAP/Grand Line Music, ASCAP/Universal Music - Z Tunes LLC, ASCAP/Jersey Girl Music, ASCAP/Sony/ATV Harmony, ASCAP/Lights Of Denver Music, ASCAP/Sony/ATV Tunes LLC, ASCAP/I B Daniel Music, ASCAP/Daniel Music Group, ASCAP/Water Bound Music, ASCAP/John Waite Music, ASCAP (K.Cook, L.Drew, M.Dulaney, S.D.Jones, J.Waite) **53**

**IF YOU WANT SOME** Stafford Road Music, BMI/Happy Cake Music, ASCAP/Songs Of Universal, Inc., BMI/Creative Nation Music, BMI/Twangin And Slangin Songs, BMI (J.Crouse, J.Houston, L.Laird) **33**

**I HOPE IT RAINS** EMI April Music, Inc., ASCAP/Shadowcash Music, ASCAP/Didn't Have To Be Music Publishing, ASCAP/EMI Blackwood Music Inc., BMI/JFLO Music, BMI (R.Proctor, K.Loveless, J.Flowers) **46**

**IT GOES LIKE THIS** EMI Blackwood Music Inc., BMI/Rhettneck Music, BMI/WB Music Corp., ASCAP/Tar-Cam-Knox Music, ASCAP/Get A Load Of This Music, ASCAP/Universal Music Corporation, ASCAP/Extraordinary Alien Publishing, ASCAP (R.Akins, B.Hayslip, J.Robbins) **28**

**I WANT CRAZY** Songs Of Universal, Inc., BMI/Happy Little Man Publishing, BMI/Hoodie Songs, BMI/Songs From The Engine Room, BMI (H.Hayes, L.McKenna, T.Verges) **12**

## J

**JUMP RIGHT IN** Weimerhound Music, BMI/Lil' Dub Music, BMI/Angelika Music, BMI/Goo Eyed Music, ASCAP (Z.Brown, W.Durrette, J.Mraz) **10**

## L

**LIKE JESUS DOES** Sony/ATV Acuff Rose Music, BMI/Six Ring Circus Songs, BMI/Sony/ATV Tree Publishing, BMI (C.Beathard, M.Criswell) **8**

**LITTLE BIT OF EVERYTHING** EMI

Blackwood Music Inc., BMI/Sagequinnjude Music, BMI/Famlove Songs, BMI/Lion Aire Publishing, BMI (B.Warren, B.Warren, K.Rudolf) **17**

**LOVE IS ALIVE** Phylvestor Music, Inc., ASCAP/Sony/ATV Songs LLC, BMI/Tomdouglassmusic, BMI (P.Vassar, T.Douglas) **44**

**LUCKY SOMETIMES** WB Music Corp., ASCAP/Get A Load Of This Music, ASCAP/Tar-Cam-Knox Music, ASCAP/EMI Blackwood Music Inc., BMI (B.Hayslip, C.Kelley, D.Davidson) **59**

## M

**MORE THAN MILES** WB Music Corp., ASCAP/John Eddie Music, ASCAP/Warner-Tamerlane Publishing Corp., BMI/Indiana Angel Music, BMI (J.Eddie, B.Gilbert) **9**

## O

**OUTTA MY HEAD** Sony/ATV Tree Publishing, BMI/Songs Of Red Bandana, BMI/Sony/ATV Cross Keys Publishing, ASCAP/243 Music, ASCAP (C.Swindell, M.R.Carter, B.Kinney) **25**

## P

**PARKING LOT PARTY** Mike Curb Music, BMI/EMI Blackwood Music Inc., BMI/Rhettneck Music, BMI/Universal Music - Careers, BMI/High Powered Machine Music, BMI (L.Brice, Thomas Rhett, R.Akins, L.Laird) **24**

**PIECES** Crystal Beach Music, BMI/Third Tier Music LLC, BMI/Songs Of MPR Music, LLC, ASCAP/Ride On Josephine Music, ASCAP/We're Going To Maui Music, BMI/Tom-Leis Music, ASCAP/Songs Of Universal, Inc., BMI (G.Allan, O.Blackmon, S.Buxton) **19**

**PLAYIN WITH FIRE** Purple Monkeys, SESAC/Universal Music Corporation, ASCAP/Squeeze Me Tight Publishing, ASCAP/Dorvin And Bubba Songs, ASCAP/Songs Of Universal, Inc., BMI/Go Ahead On Publishing, BMI/Hits Of Tom Leis, BMI (K.Armiger, R.Davis, M.Davis) **50**

**POINT AT YOU** EMI Blackwood Music Inc., BMI/Ross Copperman Songs, BMI/4 Tunes Music Publishing Limited, BMI/WB Music Corp., ASCAP/Tar-Cam-Knox Music, ASCAP/Get A Load Of This Music, ASCAP (R.Copperman, R.Akins, B.Hayslip) **18**

## R

**REDNECK CRAZY** Global Dog Music, ASCAP/Lunelight Music, ASCAP/Green Vinyl Music, ASCAP/Big Loud Songs, ASCAP/Angel River Songs, ASCAP (J.Kear, M.Irwin, C.Tompkins) **22**

**ROUND HERE** Big Red Toe, BMI/Amarillo Sky Songs, BMI/Big Loud Bucks, BMI/Big Loud Songs, ASCAP/Angel River Songs, ASCAP/EMI Blackwood Music Inc., BMI (R.Clawson, C.Tompkins, Thomas Rhett) **29**

**RUNNIN' OUTTA MOONLIGHT** EMI Blackwood Music Inc., BMI/EMI April Music, Inc., ASCAP/Didn't Have To Be Music Publishing, ASCAP/External Combustion Music, ASCAP/Songs Of Southside Independent Music Publishing, L/Out Of The Taperoom Music, ASCAP (D.Davidson, J.K.Loveless, A.Gorley) **16**

## S

**SEE YOU AGAIN** Carrie-Okie Music, BMI/EMI Blackwood Music Inc., BMI/12:06 Publishing, BMI/Raylene Music, ASCAP/BMG Chrysalis, ASCAP (C.Underwood, D.H.Hodges, H.Lindsay) **13**

**SEE YOU TONIGHT** Scotty McCreery Publishing Designee, BMI/External Combustion Music, ASCAP/Out Of The Taperoom Music, ASCAP/Who Wants To Buy My Publishing, ASCAP/Songs Of Southside Independent Music Publishing, L (S.McCreery, A.Gorley, Z.Crowell) **38**

**THE SIMPLE LIFE** EMI April Music, Inc., ASCAP/Reverend Jack Music, ASCAP/Songs Of Countrywood, ASCAP/Tunes Of Bigger Picture, ASCAP (D.White, J.S.Stover, B.D.Maher) **37**

**SO SOMEONE SOMEWHERE TONIGHT** Congregation Songs, SESAC/Dennis Morgan Music, BMI (W.Wilkins, D.Raines) **52**

**STILL ROLLIN'** On Cloud 27 Songs, ASCAP/Calhoun Enterprises, ASCAP/Peermusic III, Ltd., BMI/February 4 Music, BMI (G.Wilson, V.McGehee) **60**

**SUNNY AND 75** Warner-Tamerlane Publishing Corp., BMI/Desert Treasure Music, BMI/Sony/ATV Cross Keys Publishing, ASCAP/Becky's Boy Music, ASCAP/Sony/ATV Tree Publishing, BMI (M.Dulaney, J.Sellers, P.Jenkins) **30**

## T

**THANK A FARMER** Magic Mustang Music Inc., BMI/Big Loud Bucks, BMI/Rancho Nuevo Music, BMI/Big Music Machine, BMI/Golden Gears Music, BMI/Sony/ATV Tree Publishing, BMI/Blank Sheet Music, BMI (S.Bogard, D.Lynch, J.Thompson) **56**

**THERE'S THE SUN** Songs Of Universal, Inc., BMI/Songs Of NTN, BMI/Hits Of Tom Leis, BMI/Two Cylinder Songs, BMI (T.Summar, B.Kinney) **48**

## U

**UP ALL NIGHT** The Song Factory, LLC, BMI/Golden Vault Music, BMI/Bill Butler Music, BMI/Chrysalis One Songs, BMI/BMG Rights Management (Ireland) Limited, IMRO/Chestnut Barn Music, BMI (J.Pardi, B.Butler, B.Beavers) **41**

## W

**WAGON WHEEL** Special Rider Music, SESAC/Blood Donor Music, BMI (B.Dylan, K.Secor) **6**

**WASTING ALL THESE TEARS** Jill The Dog Publishing, BMI/Music Of Stage Three, BMI/Songs Of Cornman, BMI/BMG Chrysalis Music Publishing, BMI (R.Gaalswyk, C.Smith) **54**

**WATCH THE WORLD END** Chrysalis One Songs, BMI/English Ivy Music, BMI/BMG Rights Management (Ireland) Limited, IMRO/Songs Of Universal, Inc., BMI/Spillbilly Music Publishing, BMI (J.Spillman) **57**

**WHATEVER SHE'S GOT** Universal Music Corporation, ASCAP/Extraordinary Alien Publishing, ASCAP/EMI April Music, Inc., ASCAP/Ion Mark Nite Music, ASCAP (J.Robbins, J.M.Nite) **47**

**WHEN I SEE THIS BAR** Sony/ATV Acuff Rose Music, BMI/Basura Music, BMI/Sony/ATV Tree Publishing, BMI/Pioneer Town Songs, BMI (K.Chesney, K.Gattis) **39**

**WILD IN YOUR SMILE** EMI Blackwood Music Inc., BMI/WB Music Corp., ASCAP/Tar-Cam-Knox Music, ASCAP/Get A Load Of This Music, ASCAP/Warner-Tamerlane Publishing Corp., BMI/The Good The Bad The Ugly Publishing, BMI/Made For This Music, BMI (R.Akins, B.Hayslip, M.Green) **51**

## Y

**YOUR SIDE OF THE BED** Songs Of Universal, Inc., BMI/Hoodie Songs, BMI/Warner-Tamerlane Publishing Corp., BMI (L.McKenna, K.Fairchild, K.Schlapman, P.Sweet, J.Westbrook) **32**