

MAINSTREAM TOP 40

#1
Blow Me (One Last Kiss)
P!NK (RCA)

GREATEST GAINER
Gangnam Style
PSY (REPUBLIC)

MOST ADDED
Live While We're Young
ONE DIRECTION (COLUMBIA)

RHYTHMIC

#1
Whistle
FLO RIDA (ATLANTIC)

ADULT TOP 40

#1
Blow Me (One Last Kiss)
P!NK (RCA)

DANCE/MIX SHOW

#1
Spectrum
ZEDD FEAT. MATTHEW KOMA (INTERSCOPE)

Get The Party Started: Celebrating 20 Years Of Top 40

Happy birthday, Billboard's Mainstream Top 40 chart! Two decades in, the tally continues to pave the way in tracking trends at, and revealing the realities of, the format.

The list's 20th anniversary—it launched the week of Oct. 3, 1992; read on to see the top songs, artists and every No. 1 in the chart's history—also coincides with an unprecedented pure pop boom, as mainstream top 40 radio is playing more pure pop than ever before. And, as station ratings soar, such a focus on the format's musical middle ground is reinforcing that the format works best when de-emphasizing such extremes as rock and rap.

A year-by-year analysis of Billboard's Mainstream Top 40 chart reveals that pure pop has made up at least 60% of the survey's total top 10 hits each year from 2008 through this year (from January through July annually). Last year, the style accounted for a whopping 79% of the chart's top 10s—the highest percentage in the chart's history—as 30 of the ranking's 38 top 10s during that period fit a pop classification.

What's behind the pure pop explosion? It's no coincidence that 2008 marked the arrival of two of the format's reigning stars: Katy Perry and

Lady Gaga. Add the continued domination or resurgences in that span of such acts as Christina Aguilera, Kelly Clarkson, Maroon 5 (which, in recent years, has segued from rock to a more pop lean), P!nk and Britney Spears, and it's clear that pop has become tops at mainstream top 40.

In turn, ratings have reflected that audi-



GARY TRUST

ASSOC. DIR/CHARTS
gary.trust@billboard.com

ences' appetites for mainstream top 40 are robust. CBS Radio flipped KAMP Los Angeles and WXRK New York to the format in 2009, taking on respective Clear Channel-owned top 40 leaders KIIS and WHTZ. In Arbitron's August 2012 ratings among listeners ages 6 and older, KIIS led all Los Angeles stations with a 5.5 share, while KAMP pulled a 3.8 share. In New York in August, WHTZ registered a 6.1 share, while WXRK scored a 2.4 showing.

Similar battles brew in other large markets. In Detroit and Boston, CBS Radio has likewise switched WDZH (also in 2009) and WODS (two months ago) to mainstream top 40,



P!nk notches the 251st No. 1 in the 20-year history of Billboard's Nielsen BDS-based Mainstream Top 40 chart, as "Blow Me (One Last Kiss)" rises 2-1. Browse the list of all leaders beginning on page 9.

Billboard *HOLLYWOOD* THE REPORTER

FILM & TV MUSIC CONFERENCE

PRESENTED BY FIRST ENTERTAINMENT CREDIT UNION
An Alternative Way to Bank

OCTOBER 24-25, 2012
W HOLLYWOOD

The ONE & ONLY place to network with the hottest music supervisors, composers, directors, songwriters and producers in the business.

Purchase your ticket today and save! Use code **BIZ12** to save \$50.

FilmAndTVMusicConference.com

CONGRATULATIONS

CONGRATULATIONS TO OUR ARTISTS ON THEIR
BILLBOARD MAINSTREAM TOP 40 CHART ACHIEVEMENTS
OVER THE PAST TWO DECADES (1992-2012)

PINK

#2 ARTIST
8 #1 SINGLES
15 TOP 10 SINGLES

Usher

#1 MALE ARTIST
#7 ARTIST
16 TOP 10 SINGLES

Christina Aguilera

#12 ARTIST
5 #1 SINGLES
12 TOP 10 SINGLES



Britney Spears

#3 ARTIST
7 #1 SINGLES
15 TOP 10 SINGLES
29 CHART HITS
(TIED FOR 2ND)

Justin Timberlake

#2 MALE ARTIST
#13 ARTIST
5 #1 SINGLES
13 TOP 10 SINGLES

Kelly Clarkson

#4 ARTIST
4 #1 SINGLES
11 TOP 10 SINGLES
10 SONG
"SINCE U BEEN GONE"

again challenging established Clear Channel-owned format outlets WKQI and WXKS, respectively.

Programmers' adherence to, and the availability of, pure pop music at the format has ebbed and flowed since Billboard launched the Mainstream Top 40 chart the week of Oct. 3, 1992.

(Following the advent of BDS technology, the list "whetted the industry's appetite for data that [BDS'] seven-days-a-week/24-hours-per-day monitors capture," Billboard reported shortly after the chart's debut.) While pure pop has comprised more than 60% of all Mainstream Top 40 top 10s each year since 2008, it encompassed just 41% in 1993, when R&B from the likes of Boyz II Men, Whitney Houston and Janet Jackson infused pop playlists.



In 1996, pop accounted for just 19% of all top 10s, as such rock-based acts as Hootie & the Blowfish and Alanis Morissette became the format's—and the public's—flavor of choice.

“The Mainstream Top 40 chart came along at a point when country and hip-hop were competing heavily with the format. It gave pop PDs their own chart to look at.”

—Sean Ross

And, in 2003, pop's percentage rose to 45%, but the amount of rap top 10s doubled to 12 from six the previous year; from 1993 to 2002, no more than one rap title reached the top 10 annually.

According to Edison Research VP of music and programming Sean Ross, several factors have aligned to make for a current pinnacle for pop music. “There's less competition. R&B/hip-hop and alternative don't have the [ratings] influence that they used to, or, thus, the same ability to force songs on top 40's agenda. Only country has a similar ability to break new music and it's still viewed by most pop PDs as another sphere.”

Ross adds that top 40 has learned to cultivate its own versions of rock- and R&B-influenced pop, allowing the format to sample variety without risking playing extremes. In recent years, he notes, top 40 largely replaced hip-hop with rhythmic pop from such acts as the Black Eyed Peas and Rihanna. Teen punk similarly usurped alternative at top 40, thanks to the rise of bands like the All-American Rejects and Boys Like Girls. “Plus, R&B acts like Chris Brown and Usher are releasing exclusive pop singles for top 40 while saving their core R&B singles for that format,” says Ross (who served as Billboard's radio editor from 1988 to 1992).



CYRUS

While the names have changed—Bad Company, Celine Dion, En Vogue, Guns N' Roses and Elton John inhabited the maiden Mainstream Top 40 chart; Miley Cyrus wasn't born until a month after the list's launch—the survey continues to help

guide pop programmers' decisions. “The Mainstream Top 40 chart came along at a point when country and hip-hop were competing heavily with the format,” Ross recalls. “It gave pop PDs their own chart to look at.”

Twenty years later, it continues to.

MAINSTREAM TOP 40 'MOSTS'



ACE OF BASE

SONGS WITH THE MOST WEEKS AT NO. 1

- 14, “THE SIGN,” ACE OF BASE, 1994
- 11, “OVER AND OVER,” NELLY Featuring TIM MCGRAW, 2004-05
- 11, “TORN,” NATALIE IMBRUGLIA, 1998
- 11, “I LOVE YOU ALWAYS FOREVER,” DONNA LEWIS, 1996
- 11, “ONE SWEET DAY,” MARIAH CAREY & BOYZ II MEN, 1995-96
- 10, “WE BELONG TOGETHER,” MARIAH CAREY, 2005
- 10, “HOW YOU REMIND ME,” NICKELBACK, 2001-02
- 10, “BYE BYE BYE,” 'N SYNC, 2000
- 10, “MY HEART WILL GO ON,” CELINE DION, 1998
- 10, “DON'T SPEAK,” NO DOUBT, 1996-97
- 10, “I KNOW,” DIONNE FARRIS, 1995

ARTISTS WITH THE MOST NO. 1s

- 9, RIHANNA
- 9, KATY PERRY
- 8, P!NK
- 7, LADY GAGA
- 7, BRITNEY SPEARS
- 6, BEYONCÉ
- 6, MARIAH CAREY
- 5, CHRISTINA AGUILERA
- 5, AVRIL LAVIGNE
- 5, NELLY
- 5, JUSTIN TIMBERLAKE



RIHANNA

ARTISTS WITH THE MOST CHART HITS

- 33, RIHANNA
- 29, MARIAH CAREY
- 29, BRITNEY SPEARS
- 28, MADONNA
- 26, LIL WAYNE

ARTISTS WITH THE MOST TOP 10s

- 21, RIHANNA
- 17, MARIAH CAREY
- 16, USHER
- 15, P!NK
- 15, BRITNEY SPEARS

Programming: BDS To Today

It's hard to remember that there used to be a time when PDs didn't know everything that was going on with their competition. Prior to the advent of BDS it was every bit as hard for a station to track what its competitor was playing as it was for record labels to get accurate information.

CBS mainstream top 40 WXRK (92.3 Now) New York PD Rick Gillette has clear memories of how different programming a station was before the advent of Billboard's Nielsen BDS-based Mainstream Top 40 chart.

He vividly remembers paying an intern minimum wage to come in once a week to listen to his competitor, write down every song it played and tabulate it. CBS VP of CHR programming Michael Martin recalls being that guy. "When I first started as an intern at [Clear Channel top 40 KIIS Los Angeles], one of my jobs was to monitor other stations."

He recalls a highly technical system for the time. The station had tape recorders attached to radios that were tuned to KIIS' competitors. They would turn them on every five minutes or so and record a six- to seven-second snippet. Martin's job was to identify the songs from those snippets, record the plays and tabulate them to create a playlist that he turned in to the station's music director.

Then, when BDS made accurate spin data available to stations, everything changed.

"It's the equivalent of having spy satellites everywhere and being able to look at the silos to see if the gas trucks are fueling the missiles," Gillette says. "Back in the old days it was like we relied on people peeking through the fence and going through the garbage."

That means when it comes to selecting music for the station things are much more precise than they used to be. "Back then the Magic 8 Ball you had in your office may have been the best option you had," Gillette says. "You may as well have been throwing a dart at a board."

The availability of BDS data also led to the demise of a few long-standing industry traditions, beginning with always adding new songs and adjusting rotations on Tuesdays. "I adjust the music constantly. I know when my competitors get their research and you can immediately know when they apply it to their rotations. We didn't have that before. We relied on whatever the other station told the record company," Martin says.

The other tradition that the launch of BDS had a huge effect on, according to Martin, was the amount of hype programmers get from record labels.

"BDS has taken out the BS factor on both sides. If someone says another station is playing something four times a day I can immediately look and see that three are in overnights," Martin says. "They can also see whether I'm hiding a record or if I'm truly exposing it. It's made everything from both sides transparent. Not in a negative way. It just means we can all see reality better, and especially today with [Arbitron's Portable People Meter], it's what we have to have."

Of course BDS data was just the tip of the iceberg in research development during the past 20 years.

Clear Channel mainstream top 40 KIIS (102.7 Kiss-FM) Los Angeles PD John Ivey says new technology has led to music selection coming full circle back to the beginning of his career. "In the mid-1970s tracking single sales was very important to programming. Now digital sales have become a very important part of the programming process and a great tool."

But that's not the only way technology has changed how PDs do their jobs. "The Internet has obviously changed everything about programming top 40. As a programmer, all this new technology opens up your mind creatively to many new possibilities to entertain and engage listeners in new ways," Ivey says.

Gillette agrees that having BDS information and so much other data available helps him view the station like a listener does: on a minute-by-minute basis. But there can be too much of a good thing—it's possible to spend too much time analyzing minutiae and forget that radio is about making a human connection.

Take Pandora, for example. Gillette points out that the service is essentially built on an algorithm and, perhaps even more important, it can't share any of the flavor of a station's local community like radio can.

"We have to be careful not to start testing every promo with a focus group before it goes on the air," Gillette says. "My audience is a real person who has a pulse I want to quicken. You don't do that do with data. You do that with personal experience that motivates and engages them and causes some surprise and delight."

Ivey concurs, saying that there's one thing that hasn't changed in the last 20 years. "Programming top 40 is still about playing hit music and actively engaging and entertaining your audience."

Of course, beyond the music the job of surprising, delighting and entertaining the audience at a top 40 station is where great radio hosts come in.

Matt Siegel, who has hosted "Matty in the Morning" on Clear Channel mainstream top 40 WXKS (Kiss 108) for 32 years, says that while things are quite different in the PD's office than they were 20 years ago, what goes on in the studio hasn't changed all that much. "It's kind of like dating or high school—everything changes and everything stays the same," he says.

Indeed, social media, text messaging and other forms of instant communication have changed how listeners communicate with one another, and in the process have made the traditional request line nearly obsolete. But Siegel says it hasn't affected what people are talking about, or the end result. "Social media has changed the world and how kids communicate but it's still all about who's going out with who and the captain of football team still goes home with the hottest cheerleader."

Siegel, who was recently inducted into the Massachusetts Broadcasters Hall of Fame, says the biggest change is really in the hallways, with one company being able to own stations that share a lot of audience like his station does with rhythmic WJMN (Jam'n 94.5). "You can sit down and have lunch with them every day; it's kind of bizarre."

He points out that the same thing is happening at the CBS cluster in Boston, which just launched a new mainstream top 40 station WODS (Amp 103.3) aimed right at Kiss. In all likelihood the new station will wind up sharing a lot of audience with another CBS station in the market, adult top 40 WBMX (Mix 104.1).

"There are only so many different slots. There's not a lot of big rock stations anymore. Classical and jazz are both nonexistent, so all the stations are fighting for this tiny little lane," Siegel says. "There's top 40. Then there's hot AC and rhythmic AC and all these other sort of made-up categories. The fact is there are only so many lanes on the freeway." ●●●



GILLETTE



MIKE STERN

EDITOR

mike.stern@billboard.com



MARTIN



SIEGEL

BDS' Debut: The Era Of Accountability Begins

It can be hard to recognize the long-term implications of change while in the middle of it. Looking back now, it's easy to see how the launch of the Nielsen BDS-based Mainstream Top 40 chart sent ripples throughout the promotion industry. But at the time, the ramifications weren't easy to predict.

To understand what a radical change the new chart represented requires a look back at how the charts had been compiled up to that time. Stations called in to the trades and reported what records they were playing. They didn't give spin counts because the stations didn't have accurate numbers to report. Instead they reported what rotation level records were in: heavy, medium or light.

"[The reports] could mean anything," RCA Records executive VP of promotion Joe Riccitelli says. "I remember you could get a 'hot report.' And you'd say, 'Great. What's a hot report?' And the answer was, 'I don't know, but we got 50 of them.'"



RICCITELLI

Back then, dealing with stations and attempting to gauge how a record was performing was frustrating, Naumann Promotion president Jeffrey Naumann says. "I was always pissed off at radio because I knew which stations would add records but never play the songs."

Working for Virgin Records at the time, Naumann says it's not like paper adds were a secret. "It was kind of like a game of cat and mouse. Everybody knew about it."

Then came BDS and suddenly everyone knew exactly how many spins each record was getting.

"The thing BDS brought to the promotion world was reality," EMI North America executive VP of marketing and promotion Greg Thompson says. "It brought reality to how quickly a record is really developing; how many spins it really was getting and what kind of audience it was really reaching instead of what you thought it was reaching."

That new reality led to many changes in all areas of the promotion business, starting at the highest levels with the department heads. "Some promotion executives were so used to the way things were it took them a while to adjust to what the future was going to be like," Riccitelli says.



THOMPSON

Part of that adjustment, Naumann says, is that not only was BDS a new concept in 1992, but for many people so was the technology it used. "It took a while before they even put the BDS data on our computers," he recalls.

Thompson says it was like being a professional athlete who returns to start a new season and finds out the rules of the game have changed. "You had to reprogram your strategy to play the game with different rules, but I don't think it was a huge fundamental shift for anybody. The head of promotions job was still the same: get music exposed, break hit singles and have success with chart-topping songs."

One thing that no one could have predicted was how the new chart's debut would lead to a distinct shift in the relationship between radio and records. Stations had always called in their playlists and been taken at their word. Then labels had access to new information that showed what was really happening.

"It was hard for radio because all of a sudden it felt like promotion people became the spin police," Thompson says. "In the end everyone is better off for it, but at the time it was very tense between radio and records because people were questioning what the stations were saying."

Especially early on, some labels took the "spin police" role too far, says Naumann, who believes that calling stations over just a couple of spins showed a lack of respect and understanding for how stations operate. "It means they don't understand the mechanics of how stations play music and use Selector."

But over time labels eased up, some learning to watch for trends instead of small changes in rotation. Meanwhile, Thompson says PDs learned how to use the information just as effectively. "Now it's funny, because radio uses it just as much as we do. Radio will look up a song and say, 'You're 40% in overnights.' It's become part of everyone's vocabulary."

The new level of accountability that labels were holding stations to extended into other areas, including the independent promoters that labels used to reach out to stations.

Thompson says that just like local reps were suddenly being called out about getting actual airplay from the stations they covered, indie promoters also had to toe the line. "It became very hard for indies to get paid on paper adds. The heads of promotion said, 'I don't have to pay you if the guy isn't playing the record.'"

But it wasn't only access to how many spins a record was getting that affected the promotion world. Riccitelli says that while knowing the number of spins a record had was fascinating at first, soon it was the audience report that labels started to focus on, especially at the national level.

Promotion people started to see the difference in impact between spins at a major-market station and a small market. "When you looked at what a top 20 market meant to an audience compared to a [Parallel 3 station—a designation given to smaller-market stations] it was like 20 to 1," Riccitelli says.

He believes that fact had as much or even more effect on how labels budgeted for independent promoters, trade magazine advertisements and even promotion staffs as the accountability for spins that Thompson mentions. "After the first few years of BDS you'd see less promotion people in the field. Back in the day we had 16 field reps at PolyGram Records. I remember Warner Bros. had 20 and Columbia had 25; these crazy field promo staffs. BDS meant less markets being covered, which meant you needed less field people."

Today, there have been many factors that have affected the record industry beyond just BDS. In addition to Nielsen SoundScan, which launched at almost the same time, and the aforementioned growth of digital downloads, there's been consolidation in the radio and record industries, Elliot Spitzer's payola investigation, slumping sales and the country's economic struggles.

The result is that both Riccitelli and Thompson say their days start earlier and lead with reading spin and chart reports. "I come in and dissect song activity reports to see exactly what's going on so I can direct the staff," Riccitelli says. "They have to know what's going on as they start their day because today there is less of them and more records to keep track of."

Thompson starts off reading the reports before he even leaves home, hoping to find places where he can make an impact. "Sometimes the chart gets tight and it's hard to make progress, but other times it gets loose and with the right kind of growth you could make a big move. Those moves still create a perception that can be important for a record."

To take advantage, Thompson adds, one must start early: "Because whether or not you know what's going on, your competitor surely will." ●●●

MIKE STERN
EDITOR
mike.stern@billboard.com

SEP 24 2012		MAINSTREAM TOP 40		Billboard®		TOP SONGS 1992-2012	
RANK	TITLE/ARTIST/LABEL	PEAK YEAR	RANK	TITLE/ARTIST/LABEL	PEAK YEAR		
1	IRIS/Goo Goo Dolls Warner Sunset/Reprise	1998	26	TORN/Natalie Imbruglia RCA	1998		
2	ANOTHER NIGHT/Real McCoy Arista	1994	27	BLEEDING LOVE/Leona Lewis SYCO//RMG	2008		
3	APOLOGIZE/Timbaland Featuring OneRepublic Mosley/Blackground/Interscope	2008	28	STEREO HEARTS/Gym Class Heroes Feat. Adam Levine Decaydance/Fueled By Ramen/RRP	2011		
4	HANGING BY A MOMENT/Lifehouse DreamWorks	2001	29	THE REASON/Hoobastank Island/IDJMG	2004		
5	SMOOTH/Santana Featuring Rob Thomas Arista	1999	30	YOU WERE MEANT FOR ME/Jewel Atlantic	1997		
6	TRULY MADLY DEEPLY/Savage Garden Columbia	1998	31	RUN IT!/Chris Brown Jive/Zomba	2005		
7	DON'T SPEAK/No Doubt Trauma/Interscope	1996	32	WITH ARMS WIDE OPEN/Creed Wind-up	2000		
8	HERE WITHOUT YOU/3 Doors Down Republic Records/Universal/UMRG	2003	33	GIVES YOU HELL/The All-American Rejects Doghouse/DGC/Interscope	2009		
9	SLIDE/Goo Goo Dolls Warner Bros.	1999	34	WHATCHA SAY/Jason Derulo Beluga Heights/Warner Bros.	2009		
10	SINCE U BEEN GONE/Kelly Clarkson RCA/RMG	2005	34	GIVE ME EVERYTHING/Pitbull Feat. Ne-Yo, Afrojack & Nayer Mr. 305/Polo Grounds//RCA	2011		
11	HOW YOU REMIND ME/Nickelback Roadrunner/IDJMG	2001	36	WE BELONG TOGETHER/Mariah Carey Island/IDJMG	2005		
12	WE FOUND LOVE/Rihanna Featuring Calvin Harris SRP/Def Jam/IDJMG	2011	37	JUST THE WAY YOU ARE/Bruno Mars Elektra/Atlantic	2010		
13	LOW/Flo Rida Featuring T-Pain Poe Boy/Atlantic	2008	38	FLY/Sugar Ray Lava/Atlantic	1997		
14	I LOVE YOU ALWAYS FOREVER/Donna Lewis Atlantic	1996	39	BIG GIRLS DON'T CRY/Fergie will.i.am/A&M/Interscope	2007		
15	TIK TOK/Ke\$ha Kemosabe/RCA/RMG	2010	40	DON'T LET GO (LOVE)/En Vogue East West/EEG	1996		
16	...BABY ONE MORE TIME/Britney Spears Jive	1999	41	GOOD FEELING/Flo Rida Poe Boy/Atlantic	2012		
17	BECAUSE OF YOU/Kelly Clarkson RCA/RMG	2005	42	WHERE IS THE LOVE?/The Black Eyed Peas A&M/Interscope	2003		
18	MOVES LIKE JAGGER/Maroon 5 Feat. Christina Aguilera A&M/Octone/Interscope	2011	43	YOU BELONG WITH ME/Taylor Swift Big Machine/Republic	2009		
19	THE WAY I ARE/Timbaland Featuring Keri Hilson Mosley/Blackground/Interscope	2007	44	3 AM/matchbox 20 Lava/Atlantic	1998		
20	PARTY ROCK ANTHEM/LMFAO Feat. Lauren Bennett & GoonRock Party Rock/will.i.am/Cherrytree/Interscope	2011	45	SEMI-CHARMED LIFE/Third Eye Blind Elektra/EEG	1997		
21	YEAH!/Usher Featuring Lil Jon & Ludacris LaFace/Zomba	2004	46	BEHIND THESE HAZEL EYES/Kelly Clarkson RCA/RMG	2005		
22	DOWN/Jay Sean Featuring Lil Wayne Cash Money/Republic	2009	47	HEY YA!/OutKast LaFace/Zomba	2003		
23	LEAVIN'/Jesse McCartney Hollywood	2008	48	THE SIGN/Ace Of Base Arista	1994		
24	NAME/Goo Goo Dolls Metal Blade/Warner Bros.	1995	49	FAR AWAY/Nickelback Roadrunner/IDJMG	2006		
25	KRYPTONITE/3 Doors Down Republic Records/Universal	2000	50	BAD ROMANCE/Lady Gaga Streamline/KonLive/Cherrytree/Interscope	2010		

Billboard®
TOURING
CONFERENCE
& AWARDS

November 7-8, 2012
 The Roosevelt Hotel ||| NYC

WHY WE DO THIS (And How to Do it Better)
 Join the most successful concert industry professionals at this premier event.

REGISTER TODAY TO SAVE! Use code BIZ12 to save \$50.
BillboardTouringConference.com

SEP 24 2012		MAINSTREAM TOP 40		Billboard®		TOP SONGS 1992-2012	
RANK	TITLE/ARTIST/LABEL	PEAK YEAR	RANK	TITLE/ARTIST/LABEL	PEAK YEAR		
51	LOVEFOOL/The Cardigans Trampolene/Stockholm/IDJMG	1997	76	I KNOW/Dionne Farris Columbia	1995		
52	JUST A DREAM/Nelly Derty/Universal Motown	2010	77	BYE BYE BYE/'N Sync Jive	2000		
53	I KNEW I LOVED YOU/Savage Garden Columbia	2000	78	NO ONE/Alicia Keys MBK/J/RMG	2008		
54	BOOM BOOM POW/The Black Eyed Peas will.i.am/Interscope	2009	79	STICKWITU/The Pussycat Dolls A&M/Interscope	2006		
55	WALKIN' ON THE SUN/Smash Mouth Interscope	1998	80	GLAD YOU CAME/The Wanted Global Talent/Mercury/IDJMG	2012		
56	DYNAMITE/Taio Cruz Mercury/IDJMG	2010	81	MY LOVE/Justin Timberlake Featuring T.I. Jive/Zomba	2006		
57	DJ GOT US FALLIN' IN LOVE/Usher Featuring Pitbull LaFace/JLG	2010	82	SAY IT RIGHT/Nelly Furtado Mosley/Geffen	2007		
58	MISSING/Everything But The Girl Atlantic	1996	82	THIS LOVE/Maroon 5 Octone/J/RMG	2004		
59	TWO PRINCES/Spin Doctors Epic	1993	84	WITHOUT YOU/David Guetta Featuring Usher What A Music/Astralwerks/Capitol	2011		
60	SAVE TONIGHT/Eagle-Eye Cherry Work/550-Work	1999	85	I'M REAL/Jennifer Lopez Featuring Ja Rule Epic	2001		
61	ALL STAR/Smash Mouth Interscope	1999	86	SHE WILL BE LOVED/Maroon 5 Octone/J/RMG	2004		
62	STAY (I MISSED YOU)/Lisa Loeb & Nine Stories RCA	1994	87	UNWRITTEN/Natasha Bedingfield Epic	2006		
63	DON'T TURN AROUND/Ace Of Base Arista	1994	88	CHECK ON IT/Beyonce Featuring Slim Thug Columbia	2006		
64	I GOTTA FEELING/The Black Eyed Peas Interscope	2009	89	HIPS DON'T LIE/Shakira Featuring Wyclef Jean Epic	2006		
65	BENT/matchbox twenty Lava/Atlantic	2000	90	PAYPHONE/Maroon 5 Featuring Wiz Khalifa A&M/Octone/Interscope	2012		
66	GENIE IN A BOTTLE/Christina Aguilera RCA	1999	91	SOMEDAY/Nickelback Roadrunner/IDJMG	2004		
67	HOT N COLD/Katy Perry Capitol	2008	92	OVER AND OVER/Nelly Featuring Tim McGraw Derty/Fo' Reel/Curb/UMRG	2004		
68	PROMISCUOUS/Nelly Furtado Featuring Timbaland Mosley/Geffen	2006	93	BREAKAWAY/Kelly Clarkson Walt Disney/Hollywood	2004		
69	EVERY MORNING/Sugar Ray Lava/Atlantic	1999	94	AGAIN/Lenny Kravitz Virgin/Capitol	2001		
70	JUST DANCE/Lady Gaga Featuring Colby O'Donis Streamline/KonLive/Cherrytree/Interscope	2009	95	FIREWORK/Katy Perry Capitol	2010		
70	FOREVER/Chris Brown Jive/JLG	2008	96	TAKE A BOW/Rihanna SRP/Def Jam/IDJMG	2008		
72	EVERYTHING YOU WANT/Vertical Horizon RCA	2000	97	GRENADE/Bruno Mars Elektra/Atlantic	2011		
73	COMPLICATED/Avril Lavigne Arista	2002	98	SEXY AND I KNOW IT/LMFAO Party Rock/will.i.am/Cherrytree/Interscope	2011		
74	AS LONG AS YOU LOVE ME/Backstreet Boys Jive	1998	99	AIRPLANES/B.o.B Featuring Hayley Williams RebelRock/Grand Hustle/Atlantic	2010		
75	E.T./Katy Perry Featuring Kanye West Capitol	2011	100	IN MY HEAD/Jason Derulo Beluga Heights/Warner Bros.	2010		



FUTURE SOUND

IN ASSOCIATION WITH



November 15-16, 2012 ••• Terra, San Francisco

Focused on solutions, ideas, and consensus with an eye towards the bold, the new, and the different, FutureSound will bring together the tech, music and financial worlds into the same room to foster progressive conversations about next-generation opportunities for music.

REGISTER TODAY AND SAVE! Use code BIZ12 to save \$50.

www.futuresoundconference.com

SEP 24 2012

MAINSTREAM TOP 40

TOP ARTISTS 1992-2012

RANK	ARTIST	RANK	ARTIST
1	RIHANNA	26	DESTINY'S CHILD
2	P!NK	27	FLO RIDA
3	BRITNEY SPEARS	28	CELINE DION
4	KELLY CLARKSON	29	BOYZ II MEN
5	MARIAH CAREY	30	3 DOORS DOWN
6	KATY PERRY	31	GOO GOO DOLLS
7	USHER	32	BRUNO MARS
8	THE BLACK EYED PEAS	33	NO DOUBT
9	JANET JACKSON	34	SHERYL CROW
10	MADONNA	35	TLC
11	LADY GAGA	36	HOOTIE & THE BLOWFISH
12	CHRISTINA AGUILERA	37	KE\$HA
13	JUSTIN TIMBERLAKE	38	FERGIE
14	NICKELBACK	39	TAYLOR SWIFT
15	MATCHBOX TWENTY	40	JEWEL
16	BEYONCE	41	ALICIA KEYS
17	BACKSTREET BOYS	42	ACE OF BASE
18	JENNIFER LOPEZ	43	AKON
19	MAROON 5	44	ENRIQUE IGLESIAS
20	AVRIL LAVIGNE	45	SAVAGE GARDEN
21	NELLY	46	TONI BRAXTON
22	CHRIS BROWN	47	PITBULL
23	EMINEM	48	SUGAR RAY
24	'N SYNC	49	NE-YO
25	ALANIS MORISSETTE	50	WILL SMITH

RIHANNA

USHER

THE BLACK EYED PEAS

TOP MALE ARTISTS

- 1 Usher
- 2 Justin Timberlake
- 3 Nelly
- 4 Chris Brown
- 5 Eminem
- 6 Flo Rida
- 7 Bruno Mars
- 8 Akon
- 9 Enrique Iglesias
- 10 Ne-Yo

TOP FEMALE ARTISTS

- 1 Rihanna
- 2 P!nk
- 3 Britney Spears
- 4 Kelly Clarkson
- 5 Mariah Carey
- 6 Katy Perry
- 7 Janet Jackson
- 8 Madonna
- 9 Lady Gaga
- 10 Christina Aguilera

TOP DUOS/GROUPS

- 1 The Black Eyed Peas
- 2 Nickelback
- 3 Matchbox Twenty
- 4 Backstreet Boys
- 5 Maroon 5
- 6 'N Sync
- 7 Destiny's Child
- 8 Boyz II Men
- 9 3 Doors Down
- 10 Goo Goo Dolls

The 20th anniversary Mainstream Top 40 Top Songs and Top Artists rankings are based on actual performance on the weekly Nielsen BDS-fueled Mainstream Top 40 chart dating to its inception the week of Oct. 3, 1992. Songs are ranked based on an inverse point system, with weeks at No. 1 earning the greatest value and weeks at No. 40 earning the least. To ensure equitable representation, certain time frames were weighted to account for the difference between chart turnover rates from those years, as recurrent rules have changed multiple times.

Billboard

Sign up for FREE Twice-Weekly delivery of the Billboard Top 40 Update

Click Here or Visit:

www.billboard.biz/newsletter

to subscribe today!

SEP
24
2012

Billboard

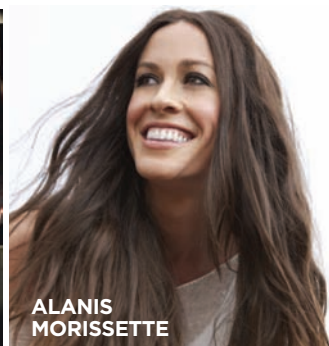
MAINSTREAM TOP 40 THE No. 1s: 1992-2012

DATE	TITLE/ARTIST
10/3/92	END OF THE ROAD/Boyz II Men
10/10/92	SOMETIMES LOVE JUST AIN'T ENOUGH/Patty Smyth
10/31/92	HOW DO YOU TALK TO AN ANGEL/The Heights
12/12/92	I WILL ALWAYS LOVE YOU/Whitney Houston
2/13/93	ORDINARY WORLD/Duran Duran
2/27/93	A WHOLE NEW WORLD (ALADDIN'S THEME)/Peabo Bryson & Regina Belle
4/10/93	TWO PRINCES/Spin Doctors
5/29/93	THAT'S THE WAY LOVE GOES/Janet Jackson
7/31/93	CAN'T HELP FALLING IN LOVE/UB40
9/4/93	DREAMLOVER/Mariah Carey
10/30/93	ALL THAT SHE WANTS/Ace Of Base
1/1/94	HERO/Mariah Carey
2/5/94	ALL FOR LOVE/Bryan Adams/Rod Stewart/Sting
2/12/94	THE SIGN/Ace Of Base
5/21/94	BABY I LOVE YOUR WAY/Big Mountain
5/28/94	I SWEAR/All-4-One
7/9/94	DON'T TURN AROUND/Ace Of Base
8/20/94	STAY (I MISSED YOU)/Lisa Loeb & Nine Stories
9/10/94	I'LL MAKE LOVE TO YOU/Boyz II Men
10/8/94	ALL I WANNA DO/Sheryl Crow
11/26/94	ANOTHER NIGHT/Real McCoy
12/24/94	ON BENDED KNEE/Boyz II Men
2/25/95	TAKE A BOW/Madonna
4/1/95	I KNOW/Dionne Farris
6/10/95	TOTAL ECLIPSE OF THE HEART/Nicki French
6/17/95	I'LL BE THERE FOR YOU/The Rembrandts
8/12/95	KISS FROM A ROSE/Seal
10/14/95	ONLY WANNA BE WITH YOU/Hootie & The Blowfish
10/28/95	FANTASY/Mariah Carey
12/9/95	ONE SWEET DAY/Mariah Carey & Boyz II Men
2/24/96	MISSING/Everything But The Girl
3/30/96	IRONIC/Alanis Morissette
5/18/96	BECAUSE YOU LOVED ME/Celine Dion
6/22/96	KILLING ME SOFTLY/Fugees Featuring Bounty Killer
7/13/96	YOU LEARN/Alanis Morissette
8/31/96	I LOVE YOU ALWAYS FOREVER/Donna Lewis
11/16/96	IT'S ALL COMING BACK TO ME NOW/Celine Dion
11/23/96	HEAD OVER FEET/Alanis Morissette
12/14/96	DON'T SPEAK/No Doubt
2/22/97	LOVEFOOL/The Cardigans
4/12/97	YOU WERE MEANT FOR ME/Jewel
5/10/97	I WANT YOU/Savage Garden
5/24/97	MMMBOP/Hanson
7/19/97	BITCH/Meredith Brooks
8/16/97	HOW BIZARRE/OMC
8/23/97	SEMI-CHARMED LIFE/Third Eye Blind
10/4/97	FOOLISH GAMES/Jewel
10/25/97	FLY/Sugar Ray
11/29/97	TUBTHUMPING/Chumbawamba
1/31/98	TRULY MADLY DEEPLY/Savage Garden

DATE	TITLE/ARTIST
2/7/98	MY HEART WILL GO ON/Celine Dion
4/25/98	TORN/Natalie Imbruglia
7/11/98	UNINVITED/Alanis Morissette
7/25/98	IRIS/Goo Goo Dolls
8/22/98	I DON'T WANT TO MISS A THING/Aerosmith
10/17/98	ONE WEEK/Barenaked Ladies
12/5/98	LULLABY/Shawn Mullins
1/30/99	SAVE TONIGHT/Eagle-Eye Cherry
2/6/99	SLIDE/Goo Goo Dolls
2/20/99	...BABY ONE MORE TIME/Britney Spears
3/27/99	EVERY MORNING/Sugar Ray
5/15/99	KISS ME/Sixpence None The Richer
5/22/99	NO SCRUBS/TLC
5/29/99	LIVIN' LA VIDA LOCA/Ricky Martin
7/17/99	I WANT IT THAT WAY/Backstreet Boys
7/31/99	ALL STAR/Smash Mouth
9/11/99	GENIE IN A BOTTLE/Christina Aguilera
10/9/99	MAMBO NO. 5 (A LITTLE BIT OF...)/Lou Bega
11/13/99	SMOOTH/Santana Featuring Rob Thomas
1/8/00	I KNEW I LOVED YOU/Savage Garden
2/12/00	WHAT A WANTS/Christina Aguilera
2/26/00	SHOW ME THE MEANING OF BEING LONELY/Backstreet Boys
3/4/00	BYE BYE BYE/'N Sync
5/13/00	I TRY/Macy Gray
6/10/00	OOPS!...I DID IT AGAIN/Britney Spears
7/1/00	IT'S GONNA BE ME/'N Sync
8/5/00	BENT/matchbox twenty
8/12/00	ABSOLUTELY (STORY OF A GIRL)/Nine Days
9/2/00	JUMPIN', JUMPIN'/Destiny's Child
9/30/00	KRYPTONITE/3 Doors Down
10/28/00	WITH ARMS WIDE OPEN/Creed
12/9/00	INDEPENDENT WOMEN PART I/Destiny's Child
1/13/01	IT WASN'T ME/Shaggy Feat. Ricardo "RikRok" Ducent
2/10/01	AGAIN/Lenny Kravitz
2/24/01	LOVE DON'T COST A THING/Jennifer Lopez
3/10/01	ANGEL/Shaggy Featuring Rayvon
5/5/01	ALL FOR YOU/Janet
5/26/01	LADY MARMALADE/Christina Aguilera, Lil' Kim, Mya & P!nk
7/28/01	ALL OR NOTHING/O-Town
8/25/01	LET ME BLOW YA MIND/Eve Featuring Gwen Stefani
9/1/01	HIT 'EM UP STYLE (OOPS!)/Blu Cantrell
10/6/01	FALLIN'/Alicia Keys
11/10/01	I'M REAL/Jennifer Lopez Featuring Ja Rule
11/24/01	FAMILY AFFAIR/Mary J. Blige
12/22/01	HOW YOU REMIND ME/Nickelback
3/2/02	HEY BABY/No Doubt Featuring Bounty Killer
3/9/02	IN THE END/Linkin Park
4/13/02	AIN'T IT FUNNY/Jennifer Lopez Featuring Ja Rule
5/4/02	DON'T LET ME GET ME/P!nk
6/1/02	A THOUSAND MILES/Vanessa Carlton



BOYZ II MEN



ALANIS MORISSETTE



BACKSTREET BOYS



CHRISTINA AGUILERA

SEP
24
2012

Billboard

**MAINSTREAM TOP 40
THE No. 1s: 1992-2012**

DATE	TITLE/ARTIST
7/6/02	WITHOUT ME/Eminem
7/13/02	HOT IN HERRE/Nelly
7/27/02	COMPLICATED/Avril Lavigne
9/21/02	DILEMMA/Nelly Featuring Kelly Rowland
10/26/02	SK8ER BOI/Avril Lavigne
11/2/02	UNDERNEATH IT ALL/No Doubt Featuring Lady Saw
11/23/02	LOSE YOURSELF/Eminem
1/11/03	BEAUTIFUL/Christina Aguilera
2/8/03	I'M WITH YOU/Avril Lavigne
3/8/03	ALL I HAVE/Jennifer Lopez Featuring LL Cool J
4/5/03	IN DA CLUB/50 Cent
5/3/03	WHEN I'M GONE/3 Doors Down
5/10/03	IGNITION/R. Kelly
5/17/03	ROCK YOUR BODY/Justin Timberlake
6/14/03	BRING ME TO LIFE/Evanescence Featuring Paul McCoy
6/28/03	MISS INDEPENDENT/Kelly Clarkson
8/9/03	WHERE IS THE LOVE?/The Black Eyed Peas
8/16/03	CRAZY IN LOVE/Beyonce Featuring Jay-Z
10/4/03	SHAKE YA TAILFEATHER/Nelly, P. Diddy & Murphy Lee
10/25/03	HERE WITHOUT YOU/3 Doors Down
11/8/03	BABY BOY/Beyonce Featuring Sean Paul
12/13/03	HEY YA!/OutKast
2/14/04	THE WAY YOU MOVE/OutKast Featuring Sleepy Brown
3/6/04	WITH YOU/Jessica Simpson
3/20/04	TOXIC/Britney Spears
4/17/04	YEAH!/Usher Featuring Lil Jon & Ludacris
5/8/04	THIS LOVE/Maroon 5
5/29/04	THE REASON/Hoobastank
7/24/04	LEAVE (GET OUT)/JoJo
8/28/04	PIECES OF ME/Ashlee Simpson
10/2/04	SHE WILL BE LOVED/Maroon 5
10/16/04	MY HAPPY ENDING/Avril Lavigne
11/6/04	OVER AND OVER/Nelly Featuring Tim McGraw
1/22/05	I DON'T WANT TO BE/Gavin DeGraw
1/29/05	LET ME LOVE YOU/Mario
2/19/05	1, 2 STEP/Ciara Featuring Missy Elliott
3/5/05	BOULEVARD OF BROKEN DREAMS/Green Day
4/2/05	SINCE U BEEN GONE/Kelly Clarkson
5/21/05	HOLLABACK GIRL/Gwen Stefani
7/2/05	WE BELONG TOGETHER/Mariah Carey
9/10/05	LISTEN TO YOUR HEART/D.H.T.
9/24/05	SHAKE IT OFF/Mariah Carey
10/29/05	BECAUSE OF YOU/Kelly Clarkson
11/5/05	GOLD DIGGER/Kanye West Featuring Jamie Foxx
12/10/05	RUN IT!/Chris Brown
1/28/06	STICKWITU/The Pussycat Dolls
2/11/06	CHECK ON IT/Beyonce Featuring Slim Thug
3/25/06	SO SICK/Ne-Yo
4/1/06	BE WITHOUT YOU/Mary J. Blige
4/29/06	TEMPERATURE/Sean Paul

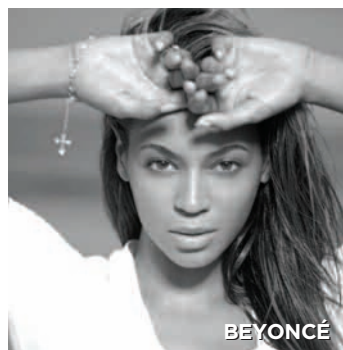
DATE	TITLE/ARTIST
5/13/06	SOS/Rihanna
5/27/06	HIPS DON'T LIE/Shakira Featuring Wyclef Jean
7/15/06	PROMISCUOUS/Nelly Furtado Featuring Timbaland
9/9/06	BUTTONS/The Pussycat Dolls Featuring Snoop Dogg
9/23/06	SEXYBACK/Justin Timberlake
10/28/06	FAR AWAY/Nickelback
11/11/06	LIPS OF AN ANGEL/Hinder
12/2/06	MY LOVE/Justin Timberlake Featuring T.I.
12/30/06	IRREPLACEABLE/Beyonce
2/24/07	SAY IT RIGHT/Nelly Furtado
3/24/07	WHAT GOES AROUND...COMES AROUND/Justin Timberlake
3/31/07	IT'S NOT OVER/Daughtry
4/14/07	CUPID'S CHOKEHOLD/BREAKFAST IN AMERICA/Gym Class Heroes Feat. Patrick Stump
5/19/07	U + UR HAND/P!nk
6/16/07	GIRLFRIEND/Avril Lavigne
6/23/07	SUMMER LOVE/Justin Timberlake
7/21/07	BIG GIRLS DON'T CRY/Fergie
9/15/07	THE WAY I ARE/Timbaland Featuring Keri Hilson
10/6/07	WHO KNEW/P!nk
10/27/07	STRONGER/Kanye West
11/17/07	APOLOGIZE/Timbaland Featuring OneRepublic
1/12/08	NO ONE/Alicia Keys
2/16/08	LOW/Flo Rida Featuring T-Pain
3/29/08	WITH YOU/Chris Brown
4/12/08	LOVE SONG/Sara Bareilles
5/3/08	BLEEDING LOVE/Leona Lewis
7/5/08	TAKE A BOW/Rihanna
7/26/08	LEAVIN'/Jesse McCartney
8/30/08	FOREVER/Chris Brown
10/4/08	DISTURBIA/Rihanna
10/25/08	SO WHAT/P!nk
11/29/08	HOT N COLD/Katy Perry
12/20/08	I'M YOURS/Jason Mraz
12/27/08	LIVE YOUR LIFE/T.I. Featuring Rihanna
1/3/09	WOMANIZER/Britney Spears
1/24/09	JUST DANCE/Lady Gaga Featuring Colby O'Donis
2/7/09	SINGLE LADIES (PUT A RING ON IT)/Beyonce
2/28/09	LOVE STORY/Taylor Swift
3/7/09	CIRCUS/Britney Spears
3/14/09	GIVES YOU HELL/The All-American Rejects
4/11/09	RIGHT ROUND/Flo Rida
4/25/09	POKER FACE/Lady Gaga
5/30/09	BOOM BOOM POW/The Black Eyed Peas
7/18/09	DON'T TRUST ME/3OH!3
7/25/09	LOVEGAME/Lady Gaga
8/8/09	WAKING UP IN VEGAS/Katy Perry
8/22/09	I GOTTA FEELING/The Black Eyed Peas
10/10/09	USE SOMEBODY/Kings Of Leon
10/17/09	DOWN/Jay Sean Featuring Lil Wayne
11/7/09	PARTY IN THE U.S.A./Miley Cyrus



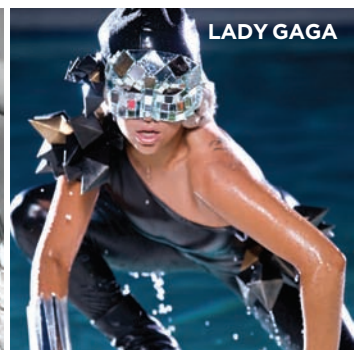
AVRIL LAVIGNE



KELLY CLARKSON



BEYONCÉ



LADY GAGA

SEP
24
2012

Billboard

MAINSTREAM TOP 40
THE No. 1s: 1992-2012

DATE	TITLE/ARTIST
11/14/09	PAPARAZZI/Lady Gaga
11/28/09	WHATCHA SAY/Jason Derulo
12/26/09	REPLAY/Iyaz
1/16/10	BAD ROMANCE/Lady Gaga
2/6/10	TIK TOK/Ke\$ha
3/27/10	TELEPHONE/Lady Gaga Featuring Beyonce
4/24/10	IN MY HEAD/Jason Derulo
5/8/10	RUDE BOY/Rihanna
5/22/10	NOTHIN' ON YOU/B.o.B Featuring Bruno Mars
5/29/10	BREAK YOUR HEART/Taio Cruz Featuring Ludacris
6/19/10	YOUR LOVE IS MY DRUG/Ke\$ha
7/3/10	CALIFORNIA GURLS/Katy Perry Featuring Snoop Dogg
8/21/10	LOVE THE WAY YOU LIE/Eminem Featuring Rihanna
9/4/10	DYNAMITE/Taio Cruz
10/2/10	TEENAGE DREAM/Katy Perry
10/30/10	JUST THE WAY YOU ARE/Bruno Mars
11/20/10	JUST A DREAM/Nelly
12/4/10	ONLY GIRL (IN THE WORLD)/Rihanna
12/25/10	RAISE YOUR GLASS/P!nk
1/8/11	FIREWORK/Katy Perry
2/5/11	GRENADE/Bruno Mars
3/12/11	TONIGHT (I'M LOVIN' YOU)/Enrique Iglesias Feat. Ludacris & DJ Frank E
3/26/11	F**KIN' PERFECT/P!nk
4/9/11	BORN THIS WAY/Lady Gaga
4/16/11	F**K YOU! (FORGET YOU)/Cee Lo Green
4/23/11	S&M/Rihanna
4/30/11	E.T./Katy Perry Featuring Kanye West
6/11/11	ROLLING IN THE DEEP/Adele
7/16/11	GIVE ME EVERYTHING/Pitbull Feat. Ne-Yo, Afrojack & Nayer
8/6/11	PARTY ROCK ANTHEM/LMFAO Feat. Lauren Bennett & GoonRock
8/13/11	LAST FRIDAY NIGHT (T.G.I.F.)/Katy Perry
9/24/11	I WANNA GO/Britney Spears
10/1/11	MOVES LIKE JAGGER/Maroon 5 Feat. Christina Aguilera
11/12/11	STEREO HEARTS/Gym Class Heroes Feat. Adam Levine
12/3/11	WITHOUT YOU/David Guetta Featuring Usher
12/10/11	WE FOUND LOVE/Rihanna Featuring Calvin Harris
2/4/12	IT WILL RAIN/Bruno Mars
2/11/12	THE ONE THAT GOT AWAY/Katy Perry
2/18/12	GOOD FEELING/Flo Rida
2/25/12	SET FIRE TO THE RAIN/Adele
3/24/12	STRONGER (WHAT DOESN'T KILL YOU)/Kelly Clarkson
4/21/12	GLAD YOU CAME/The Wanted
4/28/12	WE ARE YOUNG/fun. Featuring Janelle Monae
6/2/12	SOMEBODY THAT I USED TO KNOW/Gotye Feat. Kimbra
6/23/12	CALL ME MAYBE/Carly Rae Jepsen
7/14/12	PAYPHONE/Maroon 5 Featuring Wiz Khalifa
8/11/12	WIDE AWAKE/Katy Perry
8/25/12	LIGHTS/Ellie Goulding
9/15/12	GIVE YOUR HEART A BREAK/Demi Lovato
9/22/12	WHISTLE/Flo Rida
10/6/12	BLOW ME (ONE LAST KISS)/P!nk



The CHRonicler

20 YEARS— WHERE'D THEY GO?

In celebration of the 20th anniversary of Billboard's Nielsen BDS-based Mainstream Top 40 chart, here are The CHRonicler's recollections of each of these years.



rich.appel@billboard.com

1992 The beginning of top 40's "black period" is marked by WHITZ (Z100) New York's adding, that's right, **Pearl Jam's** "Black."

1993 Return from the United Kingdom with singles of **Ace of Base's** "All That She Wants" and **Haddaway's** "What Is Love," convinced neither will ever break in the United States.

1994 Tell everyone I was also at Woodstock '94, not realizing that trick will only work for the first one.

1995 Play **Alanis Morissette's** "You Oughta Know" at a party, predicting she's the next big thing. Laughter ensues. Make sure to remind everyone of this a year later.

1996 Sean "Puffy" Combs changes name to **Puff Daddy**.

1997 Going against every instinct in my being, purchase **Chumbawamba's** CD just to get "Tubthumping," as the song's not available as a commercial single. Still not over this.

1998 At Sony Music Christmas party, a co-worker says, "We'd better watch out for those MP3s." Have no idea what he's talking about.

1999 Sense **Eminem's** for real when 9-year-old nephew recites lyric-perfect version of "My Name Is."

2000 Neighborhood kids first hear **Britney Spears'** "Oops! I Did It Again" by downloading it off Napster.

2001 Puff Daddy changes name to **P. Diddy**.

2002 "American Idol" premieres. Predict **Kelly Clarkson** will not only win the contest, but also a Grammy. However, also predict **Brian Dunkleman** will win an Emmy.

2003 The **Madonna-Britney** kiss on the VMAs. Brit's career sizzles, Madge's fizzles. Must have been one heck of a kiss.

2004 iPod. iTunes. iGevalt.

2005 P. Diddy changes name to just **Diddy**.

2006 **Beyoncé** directs us "to the left, to the left." Later supports Obama. Coincidence?

2007 Rejected headline: "**Rihanna** reigns with 'Umbrella.'" They were probably right to can it.

2008 **Katy Perry** kissed No. 1. And we liked it.

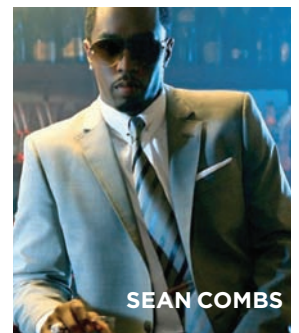
2009 This year's lesson: You're nobody until **Kanye West** thinks you didn't deserve an award.

2010 Second mainstream top 40s begin sprouting up in major markets. None use the liner "The biggest hits, played just a little bit faster."

2011 Diddy changes name to **Swag**, but only for a week.

2012 The CHRonicler is the only person in the States not to appear in a video for "Call Me Maybe." In a related story, still waiting for Diddy to change his name to **Maybe**.

Happy anniversary, Mainstream Top 40 chart. One more thing: My name is now **Snoop Diddy Shady Maybe**. But only for today.



SEP
24
2012

Billboard MAINSTREAM TOP 40

AIRPLAY
MONITORED BY
nielsen
BDS

THIS WEEK	LAST WEEK	WKS ON CHART	TITLE Imprint/Label	Artist	PLAYS		
					THIS WEEK	+/-	AVG. PER ST.
1	2	12	BLOW ME (ONE LAST KISS) RCA	P!nk	10978	+448	78
2	5	10	ONE MORE NIGHT A&M/Octone/Interscope	Maroon 5	10314	+1338	74
3	1	15	WHISTLE Poe Boy/Atlantic	Flo Rida	9991	-777	72
4	3	23	EVERYBODY TALKS Mercury/IDJMG	Neon Trees	9752	+10	71
5	7	13	GOOD TIME 604/SchoolBoy/Interscope/Republic	Owl City & Carly Rae Jepsen	8789	+570	63
6	8	11	AS LONG AS YOU LOVE ME SchoolBoy/Raymond Braun/Island/IDJMG	Justin Bieber Featuring Big Sean	8677	+705	63
7	4	28	GIVE YOUR HEART A BREAK Hollywood	Demi Lovato	7911	-1702	58
8	11	14	SOME NIGHTS Fueled By Ramen/RRP	fun.	7810	+984	56
9	10	6	WE ARE NEVER EVER GETTING BACK TOGETHER Big Machine/Republic	Taylor Swift	7772	+539	56
10	6	29	LIGHTS Cherrytree/Interscope	Ellie Goulding	7392	-907	53
11	13	15	TOO CLOSE Republic	Alex Clare	6603	+683	47
12	9	18	WIDE AWAKE Capitol	Katy Perry	6474	-1063	47
13	14	10	POUND THE ALARM Young Money/Cash Money/Republic	Nicki Minaj	5658	+220	41
14	12	24	TITANIUM What A Music/Astralwerks/Capitol	David Guetta Featuring Sia	5462	-1266	40
15	17	9	DON'T WAKE ME UP RCA	Chris Brown	4575	+278	35
16	18	7	HELLO Epic	Karmin	3950	+178	29
17	20	4	FINALLY FOUND YOU Republic	Enrique Iglesias Featuring Sammy Adams	3937	+665	29
18	21	6	50 WAYS TO SAY GOODBYE Columbia	Train	3309	+404	26
19	28	2	GANGNAM STYLE SchoolBoy/Republic	Psy	3129	+1527	23
20	16	17	WANT U BACK SYCO/Epic	Cher Lloyd	3126	-1247	24
21	23	6	LET ME LOVE YOU (UNTIL YOU LEARN TO LOVE YOURSELF) Motown/IDJMG	Ne-Yo	3030	+514	23
22	22	7	I CAN ONLY IMAGINE What A Music/Astralwerks/Capitol	David Guetta Featuring Chris Brown & Lil Wayne	2784	+211	22
23	19	20	LET'S GO Ultra	Calvin Harris Featuring Ne-Yo	2621	-815	20
24	25	13	BURN IT DOWN Machine Shop/Warner Bros.	Linkin Park	2250	+71	18
25	26	10	HEART SKIPS A BEAT SYCO/Columbia	Olly Murs Featuring Chiddy Bang	2121	+3	17

MAINSTREAM TOP 40 PANEL — 140 STATIONS

Albany, N.Y.	WFLY	Detroit	WKQI	McAllen, Texas	KVLV	Richmond, Va.	WRVQ
Albuquerque, N.M.	KDLW		WDZH	Melbourne, Fla.	WAOA	Roanoke, Va.	WLXK
Allentown, Pa.	KKOB	Flint, Mich.	WWCK		WFKS	Rochester, N.Y.	WPXY
	WAEB	Ft. Myers, Fla.	WXKB	Memphis	WHBQ	Sacramento, Calif.	KDND
Atlanta	WWVWQ	Ft. Wayne, Ind.	WJFX	Miami	WHYI		KHHM
		Gainesville, Fla.	WYKS	Milwaukee	WRNW	Saginaw, Mich.	WIOG
Atlantic City, N.J.	WAYV	Grand Rapids, Mich.	WHTS		WXSS	St. Louis	KSLZ
Augusta, Ga.	WHHD		WSNX	Minneapolis	KDWB	Salt Lake City	KUDD
Austin, Texas	KHFI	Green Bay, Wis.	WIXX	Modesto, Calif.	KHOP		KZHT
Bakersfield, Calif.	KKXX		WKSZ	Monmouth, N.J.	WBBO	San Antonio, Texas	KTFM
Baltimore	WZFT	Greensboro, N.C.	WMKS	Montgomery, Ala.	WHHY		KXXM
Beaumont, Texas	KOXY		WKZL	Nashville	WNFN	San Diego	KHTS
Birmingham, Ala.	WQEN	Greenville, N.C.	WERO		WRVW	San Francisco	KMYQ
Boise, Idaho	KSAS	Greenville, S.C.	WFBC	Nassau-Suffolk, N.Y.	WBLI		KREV
Boston	WXKS	Harrisburg, Pa.	WHKF	New Bedford, Mass.	WFHN	Santa Rosa, Calif.	KHTH
Buffalo, N.Y.	CFLZ	Hartford, Conn.	WKSS	New Haven, Conn.	WKCI		KSKY
	WKSE	Houston	KKHH	New Orleans	WEZB	Savannah, Ga.	WAEV
Burlington, Vt.	WXXX		KRBE	New York	WHTZ	Seattle	KBKS
Canton, Ohio	WDJQ	Huntsville, Ala.	WZYP		WXRK	Shreveport, La.	KRUF
Charleston, S.C.	WVSR	Indianapolis	WNOU	Norfolk, Va.	WVHT	Spokane, Wash.	KZBD
Charleston, W. Va.	WHGC	Jackson, Miss.	WYOO	Oklahoma City	KJYO	Springfield, Mo.	KSPW
Charlotte, N.C.	WNKS	Jacksonville, Fla.	WAPE	Omaha, Neb.	KQCH	Syracuse, N.Y.	WNTQ
	WDOD	Johnson City, Tenn.	WNWW	Oxnard, Calif.	WXXL	Tampa, Fla.	WFLZ
Chattanooga, Tenn.	WKSC	Kansas City, Tenn.	WAEZ	Philadelphia	KFYV		WPOI
Chicago	WKFS	Knoxville, Tenn.	KMXV		WIOQ	Tucson, Ariz.	KRQQ
Cincinnati	WAKS	Lafayette, La.	WVST	Phoenix	WPST	Tulsa, Okla.	KHTT
Cleveland	KKMG	Lancaster, Pa.	KSMB		KMVA	Washington, D.C.	WIHT
Colorado Springs, Colo.	WNOK	Lansing, Mich.	WLAN	Pittsburgh	KZZP	West Palm Beach, Fla.	WLDI
Columbia, S.C.	WCCG	Las Vegas	WJIM	Portland, Maine	WKST	Wichita, Kan.	KZCH
Columbus, Ga.	WNCI	Little Rock, Ark.	KFRH	Portland, Ore.	WJBQ	Wilkes Barre, Pa.	WBHT
Columbus, Ohio	KKPN	Los Angeles	KLAL		KBFF		WKRZ
Corpus Christi, Texas	KHKS		KAMP	Providence, R.I.	KKRZ	Wilmington, Del.	WSTW
Dallas	KLIF	Louisville, Ky.	KIIS	Raleigh, N.C.	WPRO	Youngstown, Ohio	WHOT
	KKDM	Madison, Wis.	WDJX	Reno, Nev.	WDCG	Sirius XM	HITS 1
Des Moines, Iowa			WZEE		KLCA		20 on 20
					KWYL		

SEP
24
2012

Billboard MAINSTREAM TOP 40

AIRPLAY
MONITORED BY
nielsen
BDS

THIS WEEK	LAST WEEK	WKS ON CHART	TITLE Imprint/Label	Artist	PLAYS		
					THIS WEEK	+/-	AVG. PER ST.
26	31	2	NUMB RCA	Usher	2055	+819	17
27	30	3	FEEL AGAIN Mosley/Interscope	OneRepublic	1911	+525	19
28	33	2	YOUR BODY RCA	Christina Aguilera	1893	+849	16
29	27	8	VEGAS GIRL Capitol	Conor Maynard	1800	+29	15
30	29	6	HOME 19/Interscope	Phillip Phillips	1797	+321	21
31	24	15	DARK SIDE 19/RCA	Kelly Clarkson	1374	-1101	12
32	32	4	THE A TEAM Elektra/Atlantic	Ed Sheeran	1232	+180	17
33	NEW		LIVE WHILE WE'RE YOUNG SYCO/Columbia	One Direction	1149	+1149	10
34	35	4	SAY SOMETHIN Chase/Republic	Austin Mahone	1047	+99	12
35	37	3	2 REASONS Songbook/Atlantic	Trey Songz Featuring T.I.	1000	+198	10
36	36	2	SPECTRUM Interscope	Zedd Featuring Matthew Koma	973	+83	11
37	39	2	R.I.P. Roc Nation/Columbia	Rita Ora Featuring Tinie Tempah	901	+170	14
38	40	2	REMEMBER WHEN ThinkSay	Chris Wallace	689	+15	13
39	38	14	SHE'S SO MEAN Emblem/Atlantic	matchbox twenty	612	-159	15
40	NEW		READY OR NOT Hollywood	Bridgit Mendler	610	+45	10

Billboard's Mainstream Top 40, Rhythmic and Adult Top 40 charts rank total weekly plays (for the week ending Sunday) on 140, 68 and 78 stations, respectively, as monitored 24 hours a day, seven days a week by Nielsen BDS. Titles receive bullets if even or gaining in weekly plays. Average Plays per Station reflects Mainstream Top 40 titles' weekly plays totals divided by the number of stations on which they received airplay in the chart's tracking week. Greatest Gainers reflect titles with the top weekly increases in plays. New and Active lists the top titles gaining in plays below the Mainstream Top 40 chart. Chart data presented is this update is preliminary and subject to change, pending final review by Billboard and BDS. Finalized charts can be viewed on Monday afternoon via Nielsen BDS' subscription platforms or via subscription to www.billboardplus.com. © 2012, Prometheus Global Media, LLC and Nielsen BDS, Inc. All rights reserved.

GREATEST GAINERS

TITLE Imprint/Label	Artist	GAIN
GANGNAM STYLE SchoolBoy/Republic	Psy	+1527
ONE MORE NIGHT A&M/Octone/Interscope	Maroon 5	+1338
LIVE WHILE WE'RE YOUNG SYCO/Columbia	One Direction	+1149
SOME NIGHTS Fueled By Ramen/RRP	fun.	+984
YOUR BODY RCA	Christina Aguilera	+849
NUMB RCA	Usher	+819
AS LONG AS YOU LOVE ME SchoolBoy/Raymond Braun/Island/IDJMG	Justin Bieber Feat. Big Sean	+705
TOO CLOSE Republic	Alex Clare	+683
FINALLY FOUND YOU Republic	Enrique Iglesias Feat. Sammy Adams	+665
GOODTIME 604/SchoolBoy/Interscope/Republic	Owl City & Carly Rae Jepsen	+570

MOST ADDED™

TITLE Imprint/Label	Artist	ADDS
LIVE WHILE WE'RE YOUNG SYCO/Columbia	One Direction	70
GANGNAM STYLE SchoolBoy/Republic	Psy	47
YOUR BODY RCA	Christina Aguilera	47
NUMB RCA	Usher	25
FEEL AGAIN Mosley/Interscope	OneRepublic	25
HALL OF FAME Phonogenic/Epic	The Script Feat. will.i.am	24
I CRY Poe Boy/Atlantic	Flo Rida	15
ANYTHING COULD HAPPEN Cherrytree/Interscope	Ellie Goulding	11
R.I.P. Columbia	Rita Ora Feat. Tinie Tempah	10
BAD FOR ME Collective Sounds	Megan & Liz	10

NEW AND ACTIVE

TITLE Imprint/Label	Artist	PLAYS	GAIN	TOTAL ST.
HALL OF FAME Phonogenic/Epic	The Script Feat. will.i.am	587	+345	54
I CRY Poe Boy/Atlantic	Flo Rida	575	+300	72
BAD FOR ME Collective Sounds	Megan & Liz	572	+203	55
HO HEY Dualtone	The Lumineers	378	+95	26
LIKE MONEY JYP	Wonder Girls Feat. Akon	326	+67	29
DON'T YOU WORRY CHILD Astralwerks/Capitol	Swedish House Mafia Feat. John Martin	314	+56	78
DON'T FAIL ME NOW SYCO/Epic	Melanie Amaro	296	+95	40
IT'S TIME KiDinaKORNER/Interscope	Imagine Dragons	264	+183	27
ANNA SUN RCA	Walk The Moon	249	+25	33
ANYTHING COULD HAPPEN Cherrytree/Interscope	Ellie Goulding	243	+194	39

GOING FOR ADDS

9/25 MADONNA Turn Up The Radio Live Nation/Interscope	10/2 ELLIE GOULDING Anything Could Happen Cherrytree/Interscope	CARLY RAE JEPSEN This Kiss 604/School Boy/Interscope
MEGAN & LIZ Bad For Me Collective Sounds	10/9 ALICIA KEYS Girl On Fire RCA	10/16 NO GOING FOR ADDS FOR THIS WEEK



AIRPLAY MONITORED BY
nielsen
BDS

RHYTHMIC

THIS WEEK	LAST WEEK	WKS ON CHART	TITLE Label	Artist	PLAYS	
					TW	+/-
1	1	13	WHISTLE Atlantic	Flo Rida	4166	-266
2	3	11	2 REASONS Atlantic	Trey Songz Featuring T.I.	3989	+291
3	2	22	MERCY IDJMG	Kanye West, Big Sean, Pusha T, 2 Chainz	3946	+33
4	5	10	POUND THE ALARM Republic	Nicki Minaj	3659	+310
5	6	11	AS LONG AS YOU LOVE ME IDJMG	Justin Bieber Featuring Big Sean	3589	+310
6	4	15	NO LIE IDJMG	2 Chainz Featuring Drake	3383	-241
7	8	22	HEART ATTACK Atlantic	Trey Songz	2959	+70
8	10	13	DON'T WAKE ME UP RCA	Chris Brown	2760	+311
9	12	7	LET ME LOVE YOU (UNTIL YOU LEARN TO LOVE YOURSELF) IDJMG	Ne-Yo	2566	+333
10	7	21	WHERE HAVE YOU BEEN IDJMG	Rihanna	2560	-431
11	16	9	I CAN ONLY IMAGINE Capitol	David Guetta Featuring Chris Brown & Lil Wayne	2344	+242
12	11	11	LIGHTS Interscope	Ellie Goulding	2286	-163
13	9	19	LET'S GO Ultra	Calvin Harris Featuring Ne-Yo	2206	-560
14	14	11	AMEN Warner Bros.	Meek Mill Featuring Drake	2113	-59
15	13	21	WORK HARD, PLAY HARD RRP	Wiz Khalifa	2033	-125
16	18	9	POP THAT Interscope	French Montana Featuring Rick Ross, Drake, Lil Wayne	1936	+222
17	20	7	ADORN RCA	Miguel	1684	+312
18	17	20	TITANIUM Capitol	David Guetta Featuring Sia	1525	-374
19	23	6	TURN ON THE LIGHTS Epic	Future	1311	+193
20	32	2	CLIQUE IDJMG	Kanye West Jay-Z Big Sean	1169	+489

ADULT TOP 40

THIS WEEK	LAST WEEK	WKS ON CHART	TITLE Label	Artist	PLAYS	
					TW	+/-
1	1	12	BLOW ME (ONE LAST KISS) RCA	P!nk	4234	-29
2	4	14	SOME NIGHTS RRP	fun.	3665	+314
3	2	26	EVERYBODY TALKS IDJMG	Neon Trees	3591	-291
4	3	18	WIDE AWAKE Capitol	Katy Perry	3471	-50
5	9	9	ONE MORE NIGHT Interscope	Maroon 5	3213	+629
6	5	35	LIGHTS Interscope	Ellie Goulding	3053	-316
7	7	16	50 WAYS TO SAY GOODBYE Columbia	Train	2973	+193
8	8	15	HOME Interscope	Phillip Phillips	2776	+119
9	6	15	SHE'S SO MEAN Atlantic	matchbox twenty	2760	0
10	12	6	WE ARE NEVER EVER GETTING BACK TOGETHER Republic	Taylor Swift	2549	+164
11	13	11	GOOD TIME Interscope/Republic	Owl City & Carly Rae Jepsen	2241	+123
12	10	24	CALL ME MAYBE Interscope	Carly Rae Jepsen	2203	-351
13	14	14	TOO CLOSE Republic	Alex Clare	2145	+227
14	11	23	PAYPHONE Interscope	Maroon 5	2084	-466
15	15	22	THE A TEAM Atlantic	Ed Sheeran	1856	+47
16	17	4	FEEL AGAIN Interscope	OneRepublic	1598	+275
17	16	17	DARK SIDE RCA	Kelly Clarkson	1109	-479
18	20	13	BURN IT DOWN Warner Bros.	Linkin Park	974	+51
19	21	10	LITTLE TALKS Republic	Of Monsters And Men	969	+113
20	23	6	MISS ME S-Curve	Andy Grammer	943	+184

GREATEST GAINERS

TITLE Imprint/Label	Artist	GAIN
CLIQUE G.O.O.D./Def Jam/IDJMG	Kanye West Jay-Z Big Sean	+489
GANGNAM STYLE SchoolBoy/Republic	Psy	+446
I CRY Poe Boy/Antiatic	Flo Rida	+391
GIRL ON FIRE RCA	Alicia Keys Feat. Nicki Minaj	+373
LET ME LOVE YOU (UNTIL YOU LEARN TO LOVE YOURSELF) Motown/IDJMG	Ne-Yo	+333
ADORN ByStorm/Black Ice/RCA	Miguel	+312
DON'T WAKE ME UP RCA	Chris Brown	+311
POUND THE ALARM Young Money/Cash Money/Republic	Nicki Minaj	+310
AS LONG AS YOU LOVE ME SchoolBoy/Raymond Braun/Island/IDJMG	Justin Bieber Feat. Big Sean	+310
2 REASONS Songbook/Antiatic	Trey Songz Feat. T.I.	+291

GREATEST GAINERS

TITLE Imprint/Label	Artist	GAIN
ONE MORE NIGHT A&M/Octone/Interscope	Maroon 5	+629
SOME NIGHTS Fueled By Ramen/RRP	fun.	+314
FEEL AGAIN Mosley/Interscope	OneRepublic	+275
TOO CLOSE Republic	Alex Clare	+227
HALL OF FAME Phonogenic/Epic	The Script Feat. will.i.am	+213
50 WAYS TO SAY GOODBYE Columbia	Train	+193
MISS ME S-Curve	Andy Grammer	+184
WE ARE NEVER EVER GETTING BACK TOGETHER Big Machine/Republic	Taylor Swift	+164
YOUR BODY	Christina Aguilera	+144
BETWEEN THE RAINDROPS Geffen/Interscope	Lifhouse Feat. Natasha Bedingfield	+140

TOP 40 INDICATOR PANEL — 72 STATIONS

Abilene, Texas	KORQ	Ft. Smith, Ark.	KISR	Odessa, Texas	KCRS
Alexandria, La.	KQID	Grand Forks, N.D.	KKXL	Olean, N.Y.	WMXO
Amarillo, Texas	KXSS		KZGF	Panama City, Fla.	WILN
Billings, Mont.	KRSQ	Grand Island-Kearney, Neb.	KQKY	St. Cloud, Minn.	KCLD
Bloomington, Ill.	WBNQ	Hagerstown, Md.	WNUZ	Salina, Kan.	KACZ
	WWHX	Hamptons, N.Y.	WBEA		KJCK
Bryan-College Station, Texas	KNDE	Harrisonburg, Va.	WQPO	San Angelo, Texas	KIXY
Carbondale, Ill.	WCIL	Hot Springs, Ark.	KLAZ	San Juan, P.R.	WTOK
Casper, Wyo.	KTRS	Hudson Valley, N.Y.	WSPK	Sioux Falls, S.D.	KKCK
Cedar Rapids, Iowa	KZIA	Huntington, W. Va.	WKEE	South Bend, Ind.	WNDV
Champaign, Ill.	WQQB	Idaho Falls, Idaho	KFTZ	Tallahassee, Fla.	WHTF
Charlottesville, Va.	WHTe	Ithaca, N.Y.	WFIZ	Terre Haute, Ind.	WMGI
Concord (Lakes Region), N.H.	WJYY	Joplin, Mo.	KSYN	Traverse City, Mich.	WJZQ
Cookeville, Tenn.	WGIC	Lebanon, N.H.	WZRT		WKHQ
Dothan, Ala.	WKMX	Lincoln, Neb.	KFRX	Tri-Cities, Wash.	KUJ
Duluth, Minn.	KDWZ	Little Rock, Ark.	KHTE	Tupelo, Miss.	WWKZ
Elmira, N.Y.	WLvy	Logan, Utah	KVFX	Utica, N.Y.	WSKS
	WNKI	Lubbock, Texas	KZII	Waco, Texas	KWTX
Erie, Pa.	WRTS	Medford, Ore.	KIFS	Wausau, Wis.	WIFC
Evansville, Ind.	WSTO	Meridian, Miss.	WJDQ	Wichita Falls, Texas	KNIN
Fairbanks, Alaska	KWLF	Monroe, La.	KNOE	Wilmington, N.C.	WAZO
Fargo, N.D.	WDAY	Morgantown, W. Va.	WVAQ	Yakima, Wash.	KFFM
Florence, Ala.	WMSR	Moscow, Idaho	KZFN	Music Choice	HIT LIST
Florence, S.C.	WJMX	Myrtle Beach, S.C.	WWXM	Network	RADIO DISNEY



AIRPLAY MONITORED BY
nielsen
BDS

DANCE/MIX SHOW

THIS WEEK	LAST WEEK	WKS ON CHART	TITLE Imprint/Label	Artist	PLAYS	
					TW	+/-
1	2	12	SPECTRUM Interscope	Zedd Feat. Matthew Koma	345	-12
2	3	23	WHERE HAVE YOU BEEN SRP/Def Jam/IDJMG	Rihanna	290	-43
3	12	3	DON'T YOU WORRY CHILD Astralwerks/Capitol	Swedish House Mafia Feat. John Martin	286	+42
4	5	5	BLOW ME (ONE LAST KISS) RCA	P!nk	270	-30
5	1	20	LET'S GO Ultra	Calvin Harris Feat. Ne-Yo	268	-102
6	8	17	THE NIGHT OUT Big Beat/Atlantic/RRP	Martin Solveig	266	-33
7	4	19	LIGHTS Cherrytree/Interscope	Ellie Goulding	258	-66
8	11	15	THE VELDT Ultra	deadmau5 Feat. Chris James	257	-25
9	13	5	AS LONG AS YOU LOVE ME SchoolBoy/Raymond Braun/Island/IDJMG	Justin Bieber Feat. Big Sean	240	-1
10	15	4	TOO CLOSE Republic	Alex Clare	239	+8
11	9	17	SILHOUETTES Cherrytree/Interscope	Avicii Feat. Salem Al Fakir	219	-69
12	6	16	WIDE AWAKE Capitol	Katy Perry	212	-87
13	NEW		GANGNAM STYLE YG/SchoolBoy/Republic	Psy	208	+92
14	17	4	I CAN ONLY IMAGINE Astralwerks/Capitol	David Guetta Feat. Chris Brown & Lil Wayne	208	-6
15	21	2	ALIVE Krewella/Columbia	Krewella	203	+15
16	23	8	LONG TIME Epic	John De Sohn Feat. Andreas Moe	200	-15
17	19	4	LET ME LOVE YOU (UNTIL YOU LEARN TO LOVE YOURSELF) Motown/IDJMG	Ne-Yo	193	-9
18	10	7	POUND THE ALARM Young Money/Cash Money/Republic	Nicki Minaj	193	-64
19	16	20	SCREAM RCA	Usher	192	-33
20	NEW		LESSONS IN LOVE Ultra	Kaskade Feat. Neon Trees	182	+44
21	14	9	WHISTLE Poe Boy/Atlantic	Flo Rida	174	-61
22	25	2	HELLO Epic	Karmin	169	+4
23	24	3	DON'T WAKE ME UP RCA	Chris Brown	163	-19
24	NEW		WE'LL BE COMING BACK Ultra	Calvin Harris Feat. Example	154	+36
25	22	3	ONE MORE NIGHT A&M/Octone/Interscope	Maroon 5	152	-36

Billboard's Dance/Mix Show chart ranks total weekly plays (for the week ending Sunday) on six dance-formatted stations and mix show plays on mainstream top 40 and select rhythmic stations that have submitted their hours of mix show programming - as monitored by Nielsen BDS - to Billboard. Titles receive bullets if even or gaining in weekly plays. © 2012, Prometheus Global Media, LLC and Nielsen BDS, Inc. All rights reserved.

POWER PLAYLISTS

WHTZ-FM

New York, NY
PD: Sharon Dastur
MD: Jagger
Clear Channel: 212-377-7900



	Plays	TW	IW
1 Owl City & Carly Rae Jepsen Good Time	96	86	
2 P!nk Blow Me (One Last Kiss)	88	63	
3 Chris Brown Don't Wake Me Up	85	48	
4 Kelly Clarkson Dark Side	77	44	
5 Justin Bieber Featuring As Long As	68	91	
6 Jason Mraz I Won't Give Up	64	103	
7 fun. Some Nights	54	42	
8 Afrojack & Shermanology Can't Stop	50	50	
9 Psy Gangnam Style	45	20	
10 Taylor Swift We Are Never Ever Gett	45	31	
11 Nicki Minaj Pound The Alarm	45	52	
12 Goyte Featuring Kimbra Somebody Tha	42	26	
13 The Wanted Glad You Came	38	28	
14 Maroon 5 One More Night	38	55	
15 David Guetta Featuring S Titanium	38	97	
16 Enrique Iglesias Featuri Finally Fo	31	33	
17 Rihanna Where Have You Been	30	38	
18 Usher Numb	29	11	
19 Ne-Yo Let Me Love You (Until You Le	29	30	
20 Karmin Hello	28	26	
21 Ed Sheeran The A Team	24	25	
22 Olly Murs Featuring Chid Heart Skip	19	22	
23 Alex Clare Too Close	18	18	
24 Christina Aguilera Your Body	18	19	
25 Conor Maynard Vegas Girl	17	22	
26 Demi Lovato Give Your Heart A Break	15	23	
27 Ellie Goulding Lights	15	55	
28 One Direction Live While We're Youn	14	0	
29 Linkin Park Burn It Down	14	7	
30 LMFAO Featuring Lauren B Party Rock	14	17	
31 Flo Rida Whistle	13	34	
32 Megan & Liz Bad For Me	12	4	
33 LMFAO Sexy And I Know It	12	8	
34 Nicki Minaj Starships	12	9	
35 B.o.B Featuring Hayley W Airplanes	11	10	
36 Rihanna Featuring Calvin We Found L	11	13	
37 Bruno Mars The Lazy Song	10	5	
38 Jessie J Domino	10	6	
39 One Direction What Makes You Beau	10	9	
40 Katy Perry Wide Awake	10	11	

WXRK-FM

New York, NY
PD: Rick Gillette
APD/MD: Rob Wagman
CBS Radio: 212-242-6190



	Plays	TW	IW
1 Rihanna Where Have You Been	115	121	
2 Don Omar & Lucenzo Danza Kuduro	111	118	
3 Chris Brown Don't Wake Me Up	105	119	
4 P!nk Blow Me (One Last Kiss)	104	59	
5 David Guetta Featuring S Titanium	100	75	
6 Nicki Minaj Pound The Alarm	87	88	
7 Flo Rida Whistle	76	89	
8 Justin Bieber Featuring As Long As	74	34	
9 Psy Gangnam Style	68	54	
10 Maroon 5 One More Night	62	35	
11 Afrojack & Shermanology Can't Stop	61	56	
12 Ellie Goulding Lights	61	107	
13 Ne-Yo Let Me Love You (Until You Le	43	42	
14 Taylor Swift We Are Never Ever Gett	42	65	
15 Alex Clare Too Close	41	4	
16 Owl City & Carly Rae Jepsen Good Time	38	24	
17 Nicki Minaj Starships	35	33	
18 Goyte Featuring Kimbra Somebody Tha	34	34	
19 Maroon 5 Featuring Wiz K Payphone	32	57	
20 Katy Perry Wide Awake	31	67	
21 Afrojack Featuring Eva S Take Over	30	33	
22 Wanted I Found You	29	17	
23 David Guetta Featuring C I Can Only	29	21	
24 Flo Rida Featuring Sia Wild Ones	29	28	
25 fun. Some Nights	29	32	
26 Kanye West, Big Sean, Pu Mercy	28	9	
27 Drake Featuring Rihanna Take Care	28	30	
28 Demi Lovato Give Your Heart A Break	28	47	
29 Carly Rae Jepsen Call Me Maybe	27	30	
30 Rihanna Featuring Calvin We Found L	25	22	
31 Pitbull Featuring Ne-Yo, Give Me Ev	25	23	
32 Katy Perry Part Of Me	24	23	
33 Karmin Hello	22	36	
34 Usher Featuring will.i.a OMG	12	4	
35 Wonder Girls Featuring A Like Money	12	4	
36 LMFAO Featuring Lauren B Party Rock	11	7	
37 Pitbull Featuring Lil Jo The Anthem	10	6	
38 Flo Rida Good Feeling	10	7	
39 Edward Maya & Vika Jigul Stereo Lov	10	23	
40 Chris Brown Forever	9	8	

DANCE/MIX SHOW PANEL — 91 REPORTERS

Albany, N.Y.	WFLY	Detroit	WDZH	Memphis	WHBQ	San Antonio, Texas	KTFM
Albuquerque, N.M.	KDLW		WKQI		KWNW		KXXM
Allentown, Pa.	WAEB	Ft. Myers, Fla.	WXKB	Miami	WHYI	San Diego	KHTS
Atlanta	WWVA	Gainesville, Fla.	WYKS	Milwaukee	WXSS	San Francisco	KMVQ
Austin, Texas	KHFI	Grand Rapids, Mich.	WHTS	Minneapolis	KDWB	Santa Rosa, Calif.	KSXY
Baltimore	WZFT		WSNX	Modesto, Calif.	KHOP	Savannah, Ga.	WAEV
Boston	WXKS	Greensboro, N.C.	WKZL	Monmouth-Ocean, N.J.	WBBO	Seattle	KNHC*
Buffalo, N.Y.	CFLZ		WMKS	Nassau, N.Y.	WBLI		KQMV
	WKSE	Harrisburg, Pa.	WHKF		WPTY		KBKS
Charleston, S.C.	WSSX	Hartford, Conn.	WKSS	New Bedford, Mass.	WFHN	Springfield, Mo.	KSPW
Charlotte, N.C.	WHQC	Houston	KKHH	New Haven, Conn.	WKCI	Tampa, Fla.	WFLZ
	WNKS		KRBE	New York	WXRK	Tucson, Ariz.	KRQQ
Charleston, W. Va.	WVSR	Indianapolis	WNOW		WKTU	Tulsa, Okla.	KHHT
Chattanooga, Tenn.	WDOD	Jackson, Miss.	WYOO	Oklahoma City	KJYO	Washington, D.C.	WITB
Chicago	WCPQ*	Jacksonville, Fla.	WNWW	Orlando, Fla.	WXXL	West Palm Beach, Fla.	WLDI
	WKSC	Johnson City, Tenn.	WAEZ	Phoenix	KZZP	Wichita, Kan.	KZCH
	WBBM	Kansas City	KMXV	Pittsburgh	WKST	Wilkes Barre, Pa.	WBHT
Cleveland	WAKS	Lafayette, La.	KSMB	Portland, Ore.	KKRZ	Youngstown, Ohio	WAKZ
Colorado Springs, Colo.	KKMG	Lancaster, Pa.	WLAN	Raleigh, N.C.	WDCG	Music Choice	DANCE/ELECTRONICA*
Columbus, Ohio	WNCI	Las Vegas	KYLI*	Reno, Nev.	KWYL	Sirius XM	BPM*
Corpus Christi, Texas	KKPN	Los Angeles	KIIS	Richmond, Va.	WRVQ		
Dallas	KHKS	Louisville, Ky.	WNRW	Riverside, Calif.	KGGI		
Denver	KDHT*	Melbourne, Fla.	WNRG*	Sacramento, Calif.	KDND		
	KIMN		WFKS	Salt Lake City	KZHT		
Des Moines, Iowa	KKDM						

* full-time dance-formatted.
To add or adjust your station's mix show hours, please contact Gordon Murray at gordon.murray@billboard.com