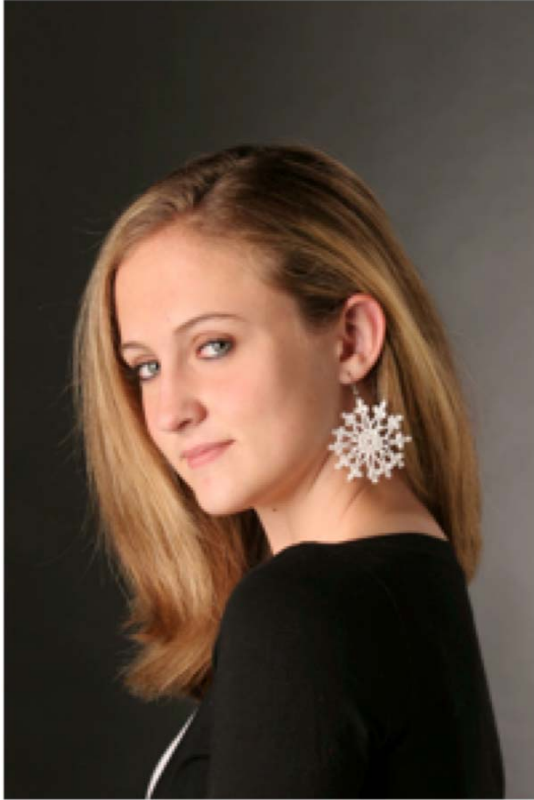


SNOWFLAKE EARRING

© Creative Partners, LLC.

Designed by Janie Herrin



Size: 2 1/4" diameter

Materials:

Size 10 white crochet cotton

Note: *Photographed model made with*

Royale Classic Crochet Thread # 201 White

Size 10 (1.3 mm) steel crochet hook (or size required for gauge)

2 Fishhook earring wires

Gauge

20 dc = 2"

Stitch Guide

Triple Picot (trP): Ch 7, sl st in 4th ch from hook; (ch 4, sl st in 4th ch from hook) twice, sl st in 4th ch of beg ch-7, ch 3: trP made.

Instructions (make 2):

Ch 5; join with sl st to form a ring.

Rnd 1: Ch 1, (sc in ring, ch 1) 6 times, join with sl st in beg sc: 6 ch-1 sps.

Rnd 2: Sl st in next sp, ch 1, in same sp and in each sp around work (sc, ch 1) twice; join in beg sc: 12 ch-1 sps.

Rnd 3: Sl st in next sp, ch 1, sc in same sp; *trP, sc in next ch-1 sp; rep from * around, skip last ch-1 sp, join in beg sc. Finish off; weave in ends.

Finishing

Starch if desired; attach center picot of any trP group to earring.

From [100 Crochet Projects](#) by Jean Leinhauser and Rita Weiss, published by Sterling Publishing. There are 99 more crochet projects in this book