

Qatar Railway Company

Agenda

Qatar Rail

1. Objectives
2. Organisation
3. Railway Network
4. Master Schedule
5. Opportunities



1. Qatar Rail Objectives

Qatar National Vision 2030



“The National Vision 2030 aims at transforming Qatar into an advanced country by 2030, capable of sustaining its own development and providing for a high standard of living for all of its people for generations to come.”

The planned Railway network will support this Vision



Vision and Mission of Qatar Railway Company



THE VISION

Develop a state-of-the-art railway infrastructure and rail operations in Qatar as a key element of transport planning and an enabler of economic growth.



THE MISSION

Supporting the “Qatar National Vision 2030” in the four major pillars:

- Human Development
- Social Development
- Economic Development
- and Environmental Development



Strategic Objectives

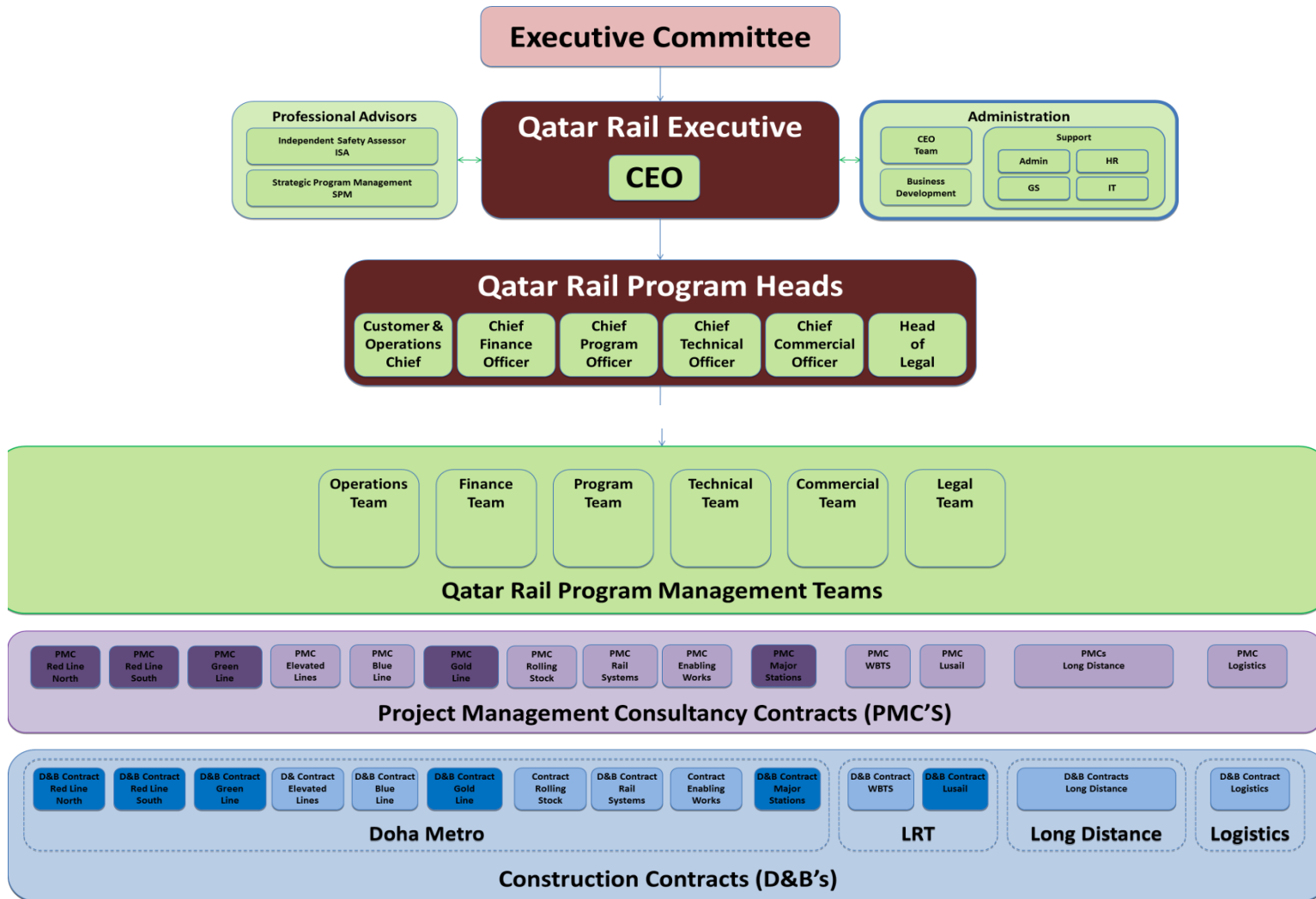


- Provide additional Transport capacity to enable economic growth
- To improve quality of life and the environment
- Provide Mass Transit for Mega Events and create a modal shift from road to rail
- Create business opportunities for Qatar by establishing key commercial operations as part of the local rail industry



2. Qatar Rail Organisation

Organization structure details



2. The Railway network

Metro – Map details



Metro – Phases

Phase 1 - Phase 2

Metro Network Key Facts	
Total Length of the Lines	230 / 103km
Underground	110 / 52 km
Elevated	91 / 37 km
At grade	29 / 14 km
Max. Design Speed	
Underground	80 km/h
Elevated urban	80 km/h
Elevated suburban	100 km/h
At grade	100 km/h
Service Headway	
Inner City	1.5 - 7
Suburbs / Region	6 - 15
No. of Stations	95 / 49

Green Education Line

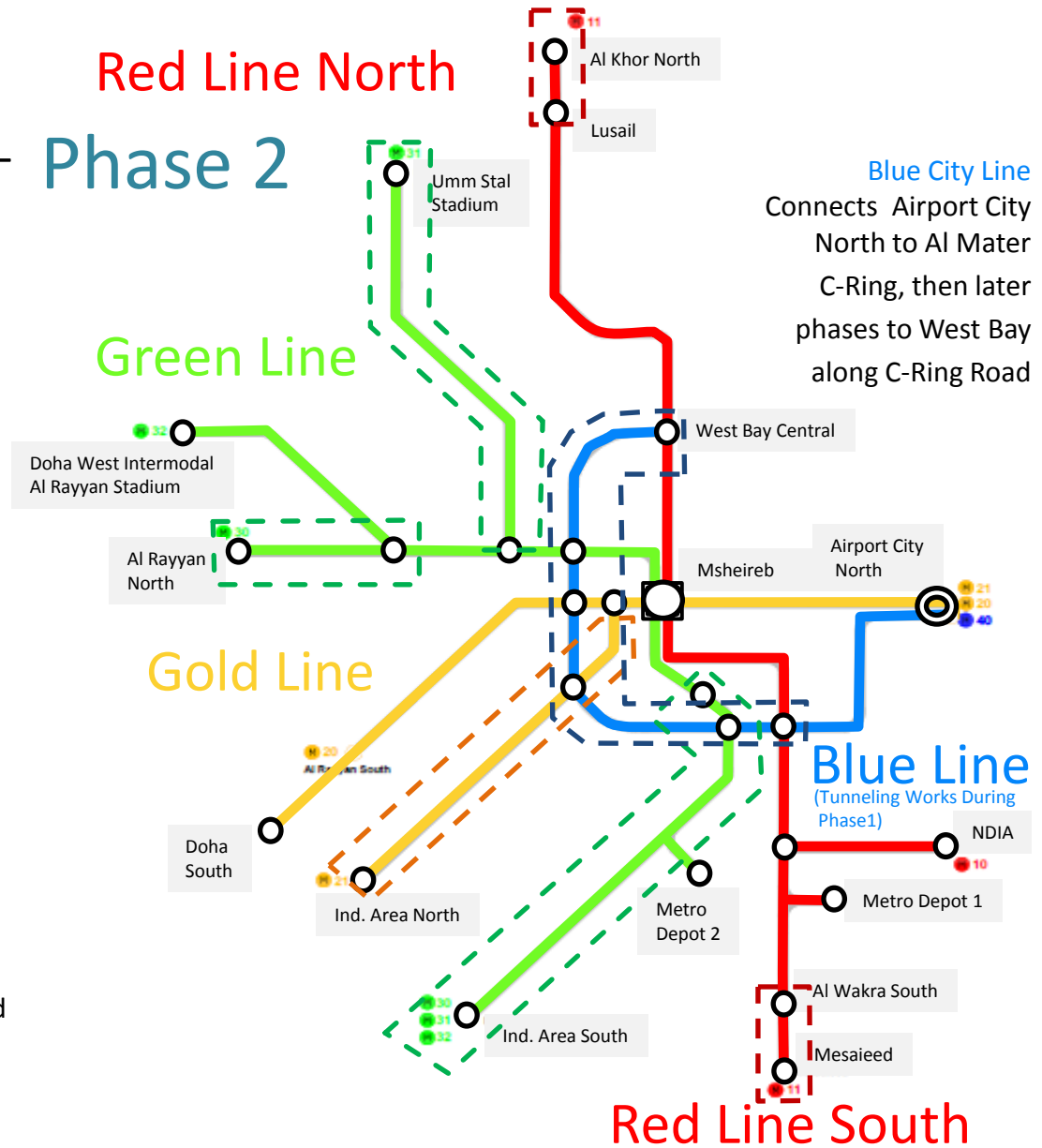
Al Rayyan Road connecting Education City with the Heart of Doha, also links to Umm Slal and the Industrial Area South

Gold Historic Line

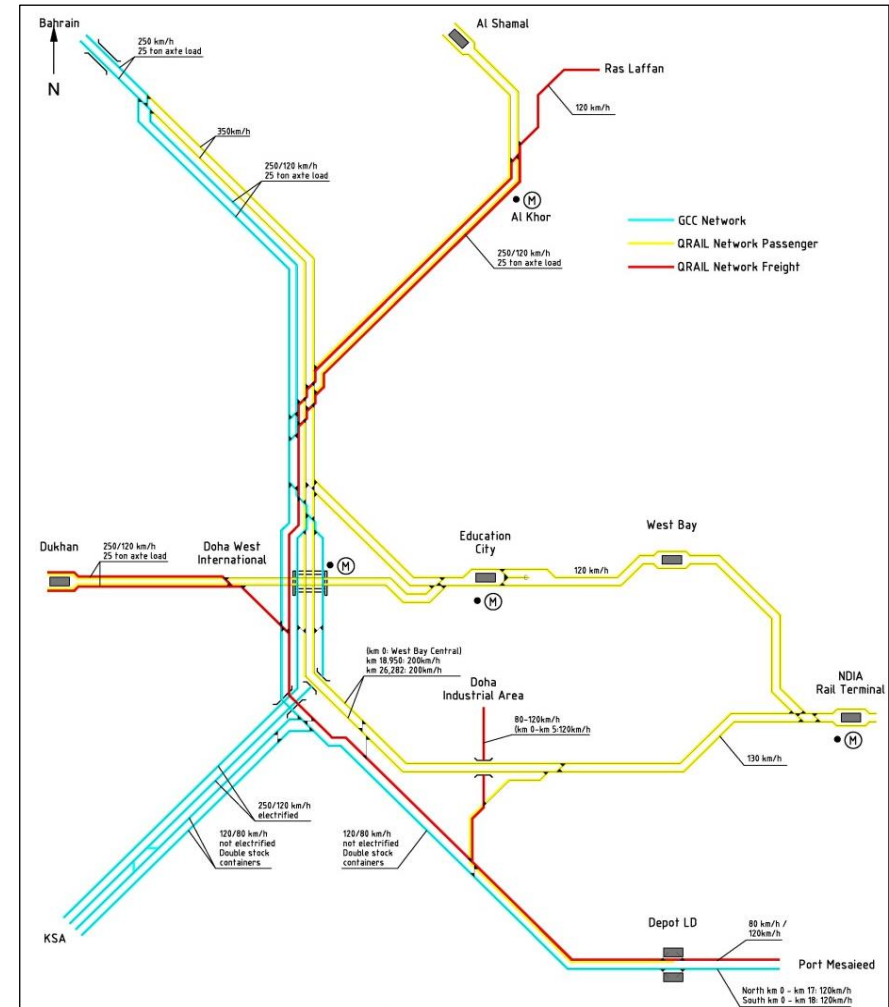
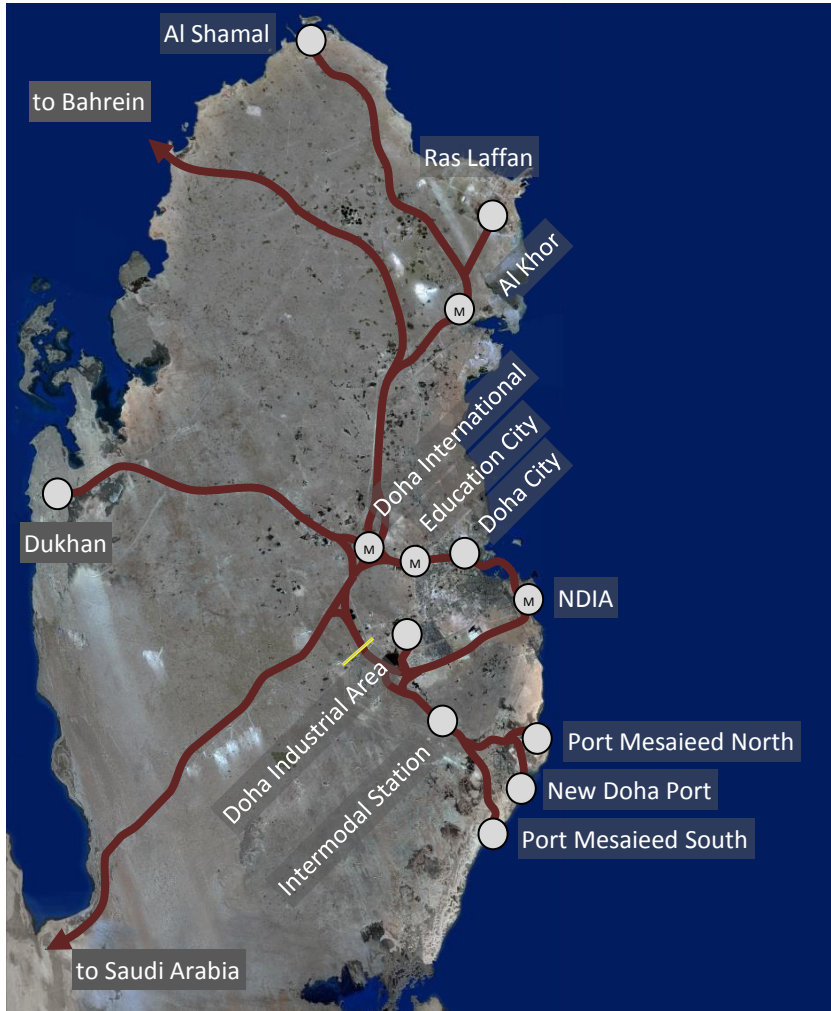
Connects Airport City via central Msheireb with Al Waab Street, Doha South and Salwa Road

Red Coast Line

Connects Mesaieed and New Doha International Airport (NDIA) via Msheireb with the West Bay and Lusail Developments; northern extensions to Al Khor



Long Distance – Map details



Long Distance – Categories

1. Long Distance International Passenger network

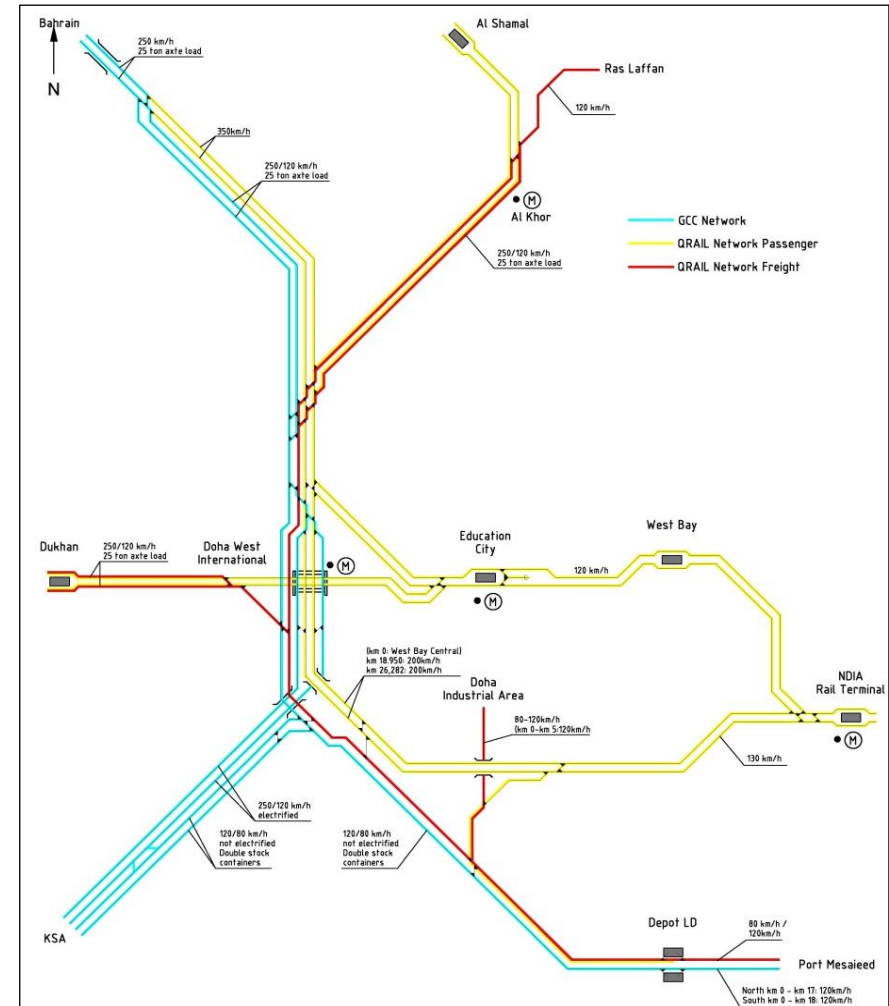
High Speed, electric 25 kV, 350 km/h
Conventional, diesel, 200 kph

2. Long Distance National Passenger network

Conventional, electric, 200 km/h

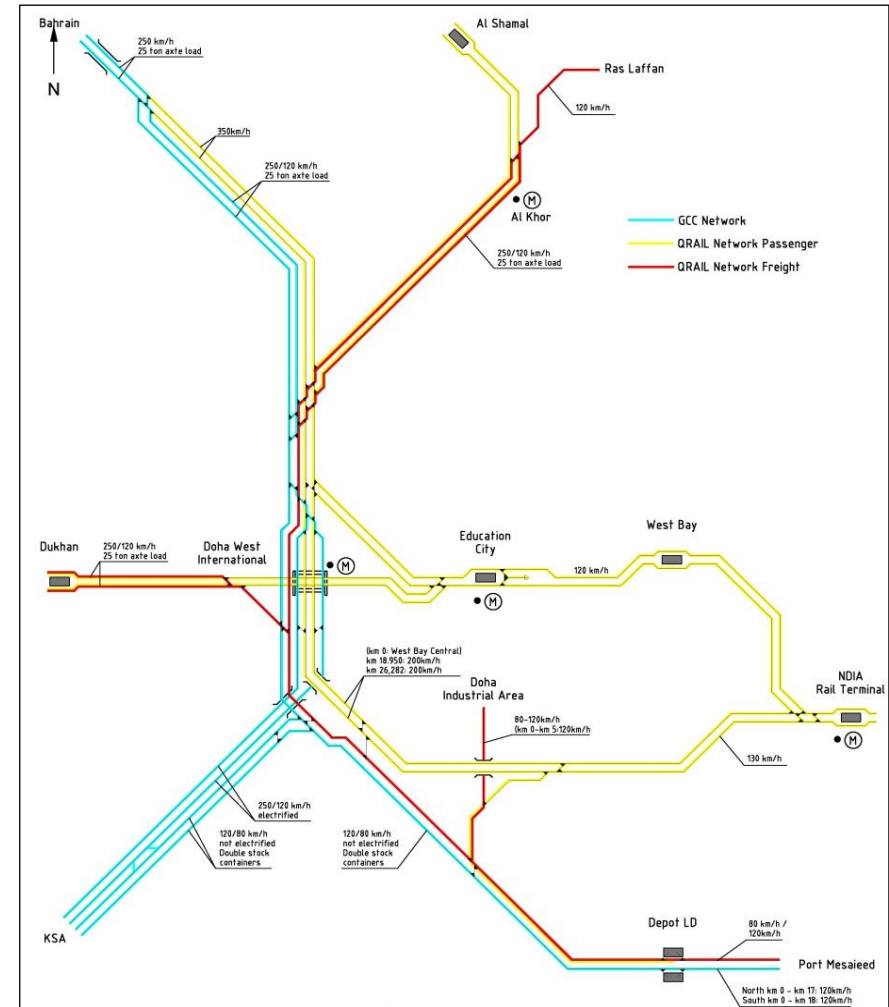
3. Long Distance International and National Freight network

Electric and diesel, 120 km/h



Long Distance – Phases

1. **Phase 1 (10/2018) 135 km**
Abu Samra (KSA) to Freight Yard and
Doha South International (part of GCC)
Port Mesaieed to Freight Yard
2. **Phase 2 (4/2021)**
Doha West to Bahrain
Doha West to NDIA
3. **Phase 3 (4/2027)**
Al Khor to Ras Laffan
Doha West to Doha City
Freight Yard to Ras Laffan
Al Khor Industrial Area to Doha
Industrial Area
4. **Final Network (10/2030)**



LRT - Lusail



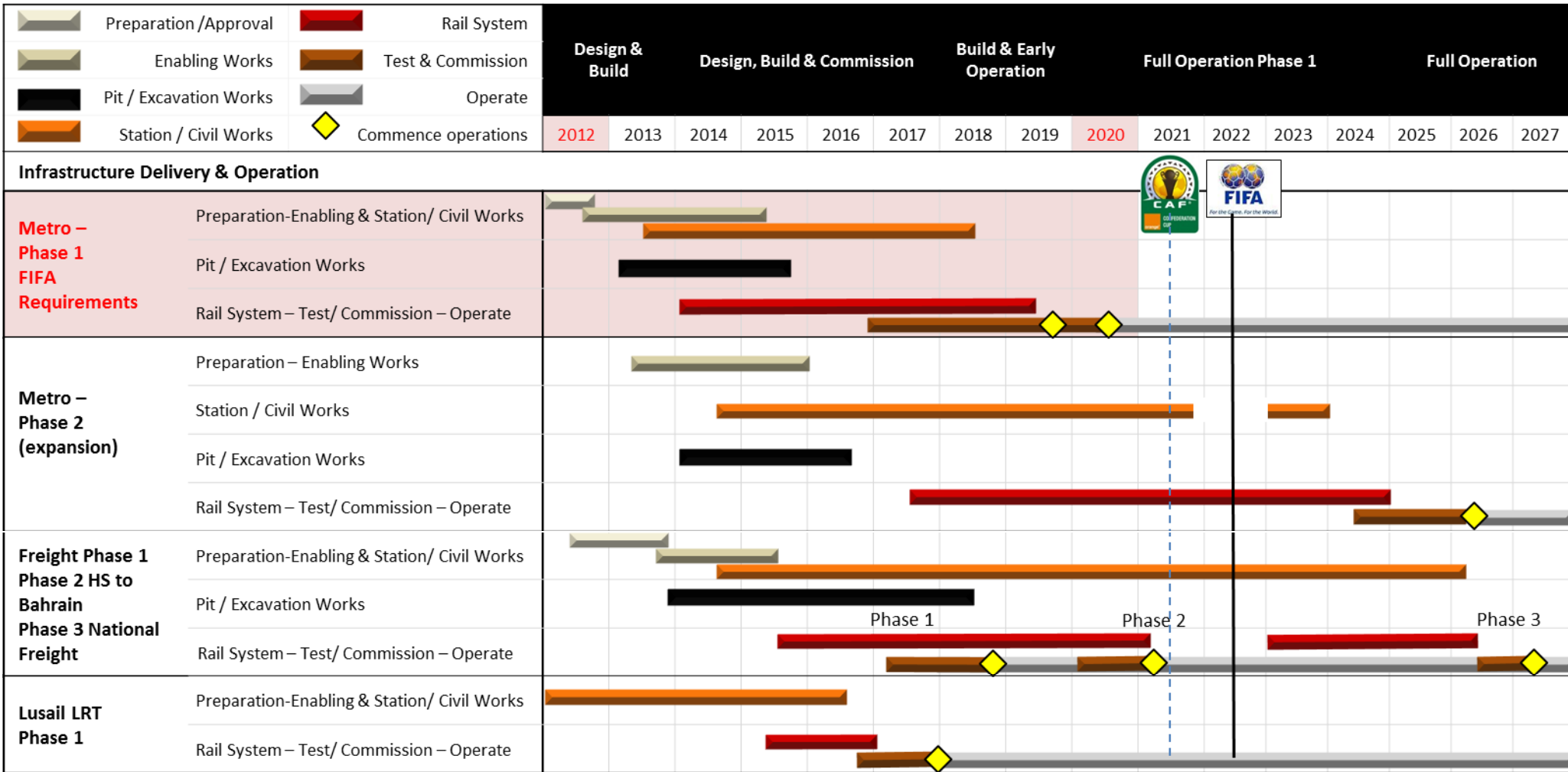
Lusail Light Rail Transit (LRT)

- 4 tramway operation lines (31 km)
- 10 km tunnel
- 3 interchanges with Metro
- 36 stations
- Catenary Free Systems



3. Master schedule

Estimated Timeline for Qatar Rail's Infrastructure



4. Opportunities

Investment opportunities

- System wide Contracts
- Rolling Stock
- Operations and Maintenance
- Over Station Developments
- Ticketing and Revenue





Thank you