

COTTON + STEEL

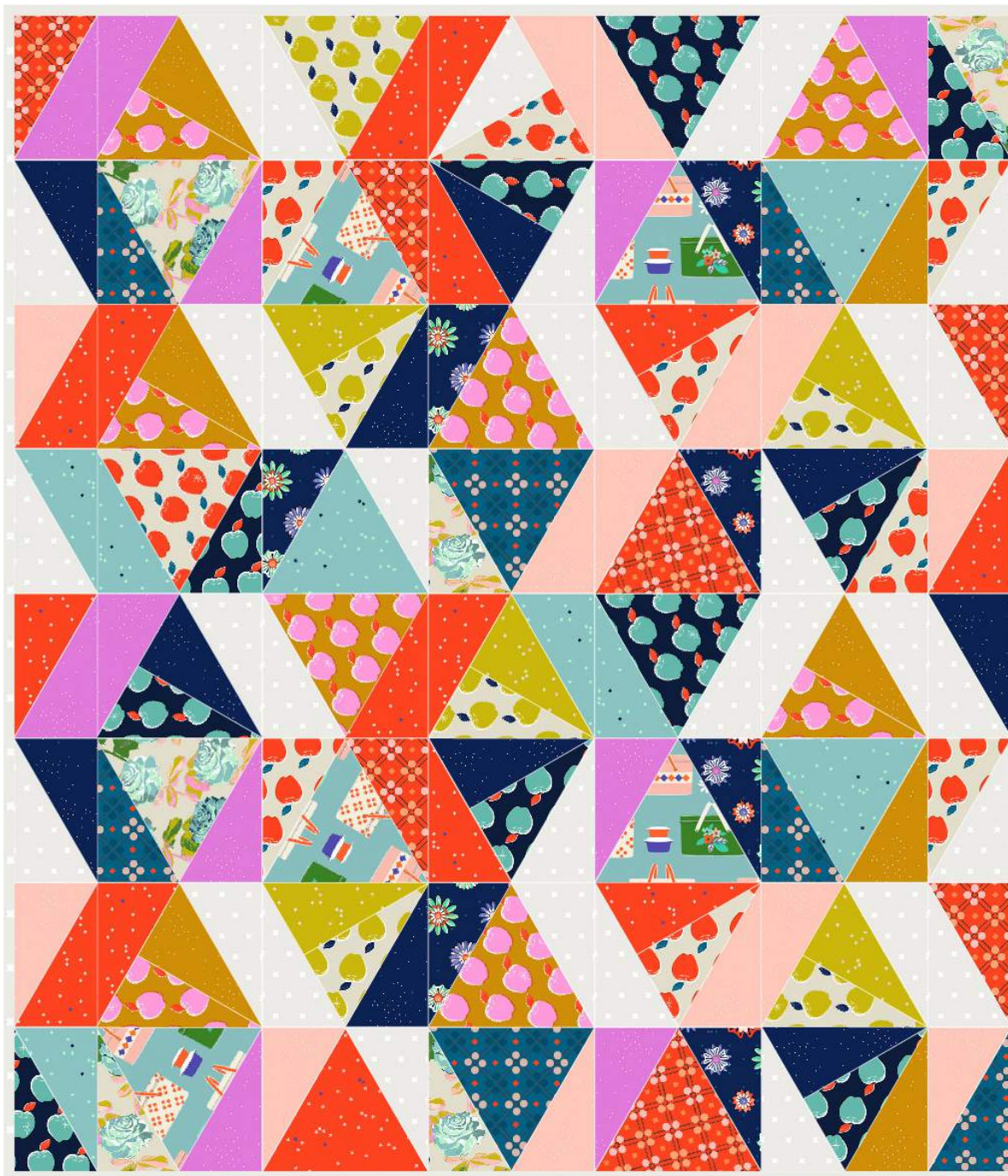
A DIVISION OF RJR FABRICS

FABRIC DESIGNED BY
MELODY MILLER

COLLECTION
PICNIC

PATTERN NAME
PICNIC QUILT

PATTERN DESIGNER
MELODY MILLER

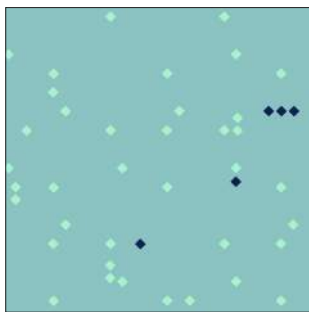


48"x56"

SUPPLY LIST:

- 4 yards backing fabric, 1/2 yard binding fabric
- Batting 72" x 72"
- All Purpose Thread
- Templates printed at 100%

FABRIC REQUIREMENTS + CUTTING LISTS:



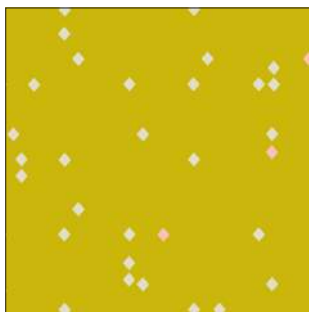
cut three template A
cut five template C

0023-1 Ant March Blue
1/3 Yard



cut one template A
cut six template B
cut two template C

0021-1 Apples Red
1/3 Yard



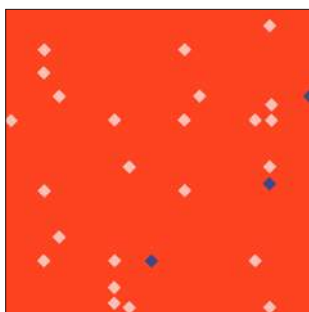
cut five template B

0023-2 Ant March Citron
1/3 Yard



cut two template A
cut one template B
cut seven template C

0021-2 Apples Navy
1/3 Yard



cut one template A
cut twelve template B
cut two template C

0023-3 Ant March Red
1/2 Yard



cut four template A
cut four template C

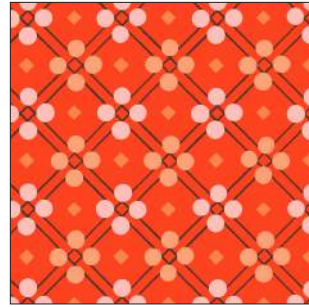
0021-3 Apples Pink
1/3 Yard

FABRIC REQUIREMENTS + CUTTING LISTS:



cut one template A
cut five template C

0021-4 Apples Citron
1/3 Yard



cut two template A
cut one template B
cut four template C

0022-3 Picnic Blanket Red
1/3 Yard



cut five template A

0018-1 Picnic Baskets Blue
1/3 Yard



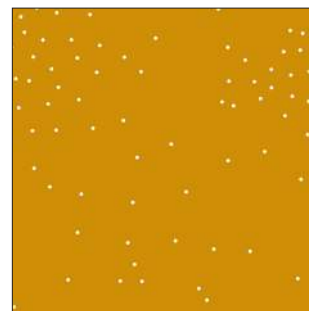
cut two template A
cut four template C

0019-1 Rose Garden Neutral
1/3 Yard



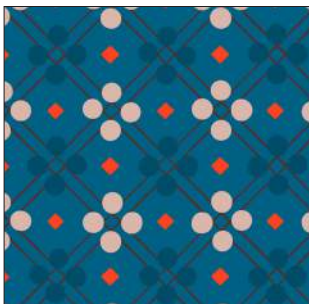
cut three template B
cut four template C

0020-2 Enamel Flowers Navy
1/3 Yard



cut seven template B

5023-4 Corduroy
1/3 Yard



cut two template A
cut one template B
cut four template C

0022-1 Picnic Blanket Teal
1/3 Yard



cut twelve template B
cut two template C

5023-2 Peaches
1/3 Yard

FABRIC REQUIREMENTS + CUTTING LISTS:



cut seven template B
cut three template C

5023-6 Counting Stars

1/3 Yard



cut ten template B
cut one template C

5023-3 Petal

1/3 Yard



cut eight template B
cut twenty six template C

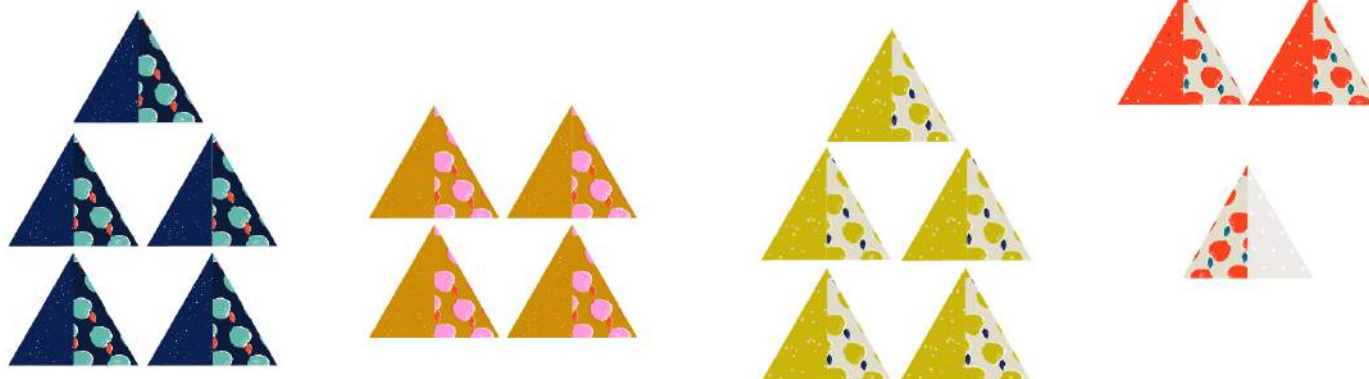
5001-1

7/8 Yard + 1/2 Yard Binding

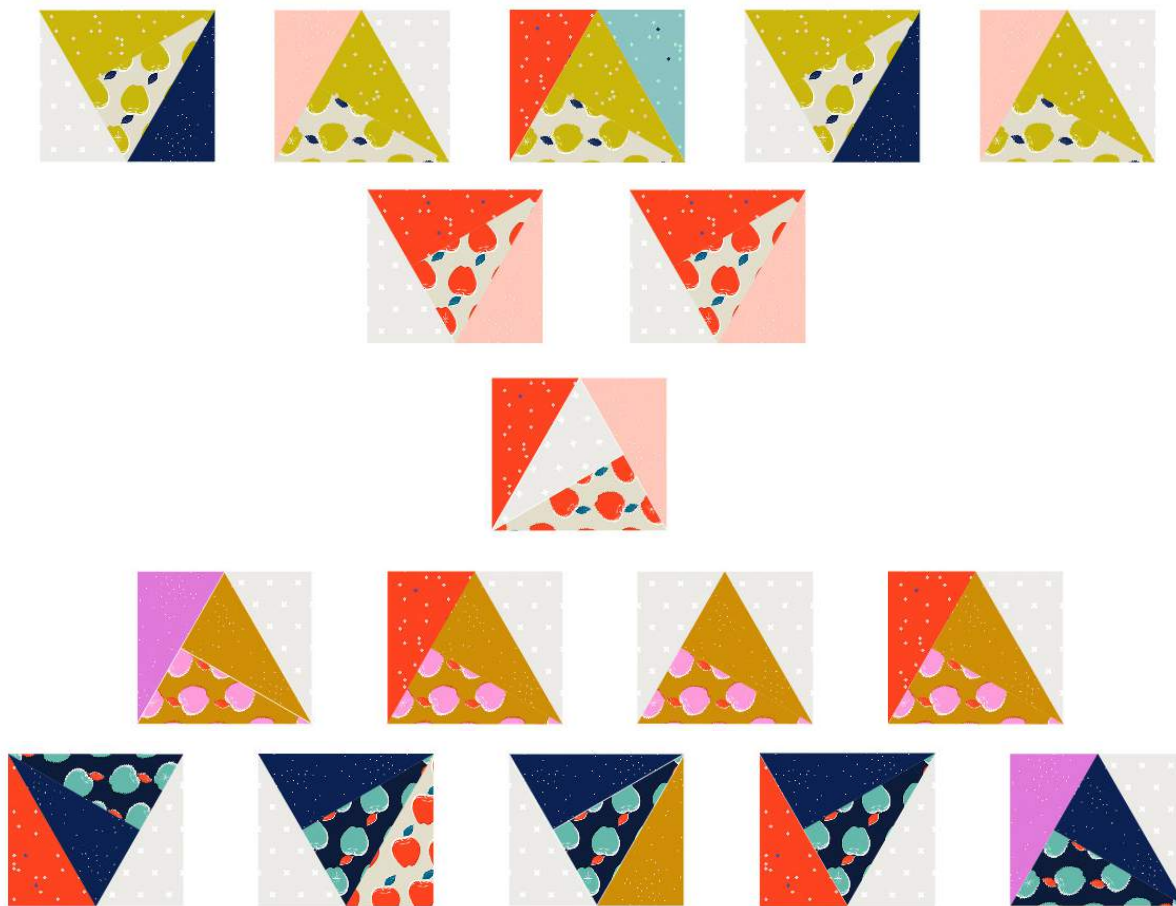
SEW:

This quilt is made up of triangle and split triangle blocks. Using the templates provided, cut the fabrics with the fabric right side up and the template printed side up. All seam allowances are 1/4" unless otherwise indicated.

1. Start with the pieced triangles. Match up the pairs as shown below and sew the straight center seam of each pair together. Press seams open and trim excess seam allowance at the point of the triangle.



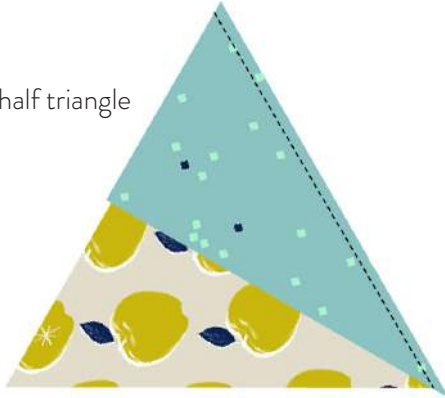
2. To complete each pieced triangle block, refer to the quilt diagram below to match up the side half triangles for each block. Use the diagram to orient the direction of the pieced triangle and sew the right, and then left half triangles to the block. (See diagram on next page which shows how to piece the right and left half triangles to each block.)



pieced triangle blocks

SEW:

sew right half triangle



press seam open



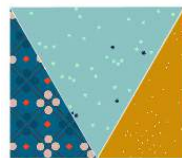
sew left half triangle



press seam open



3. Sew the print fabric triangle blocks using the same method as shown above, piecing the half triangles to the center triangle of each block. Press seams open. Complete all blocks shown.



SEW:

4. Complete the rectangular half triangle blocks using the block guide at right to match up fabric pairs. Sew the diagonal center seam taking care to match the triangle seamline points. Press open and trim excess seam allowance at the points.



complete half triangle blocks



5. Prepare the quilt for assembly by laying out each row of blocks following the row assembly diagram shown below. Sew each row matching seams and triangle points. Press seams open.



assemble rows



half triangle blocks



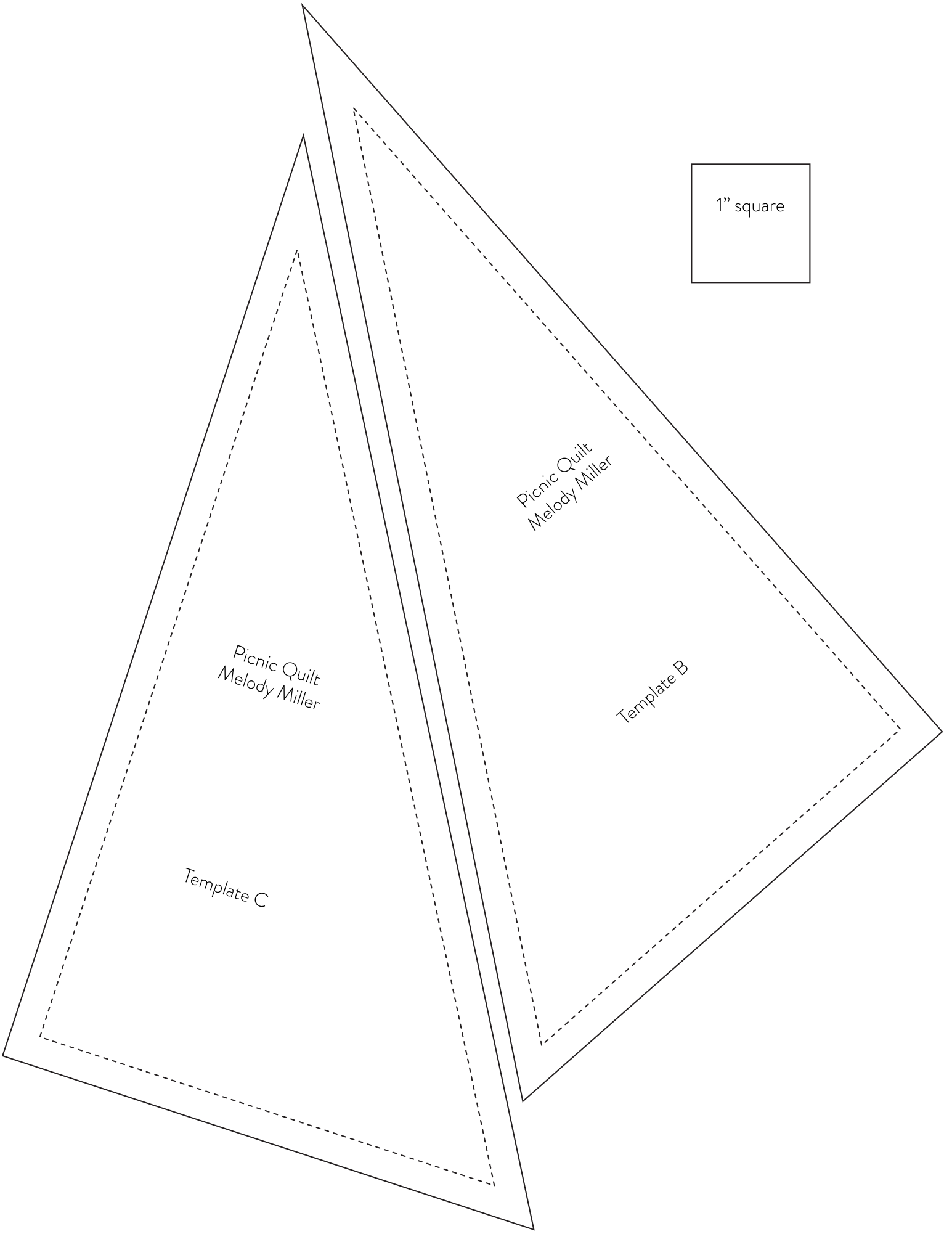
1" square

Picnic Quilt
Melody Miller

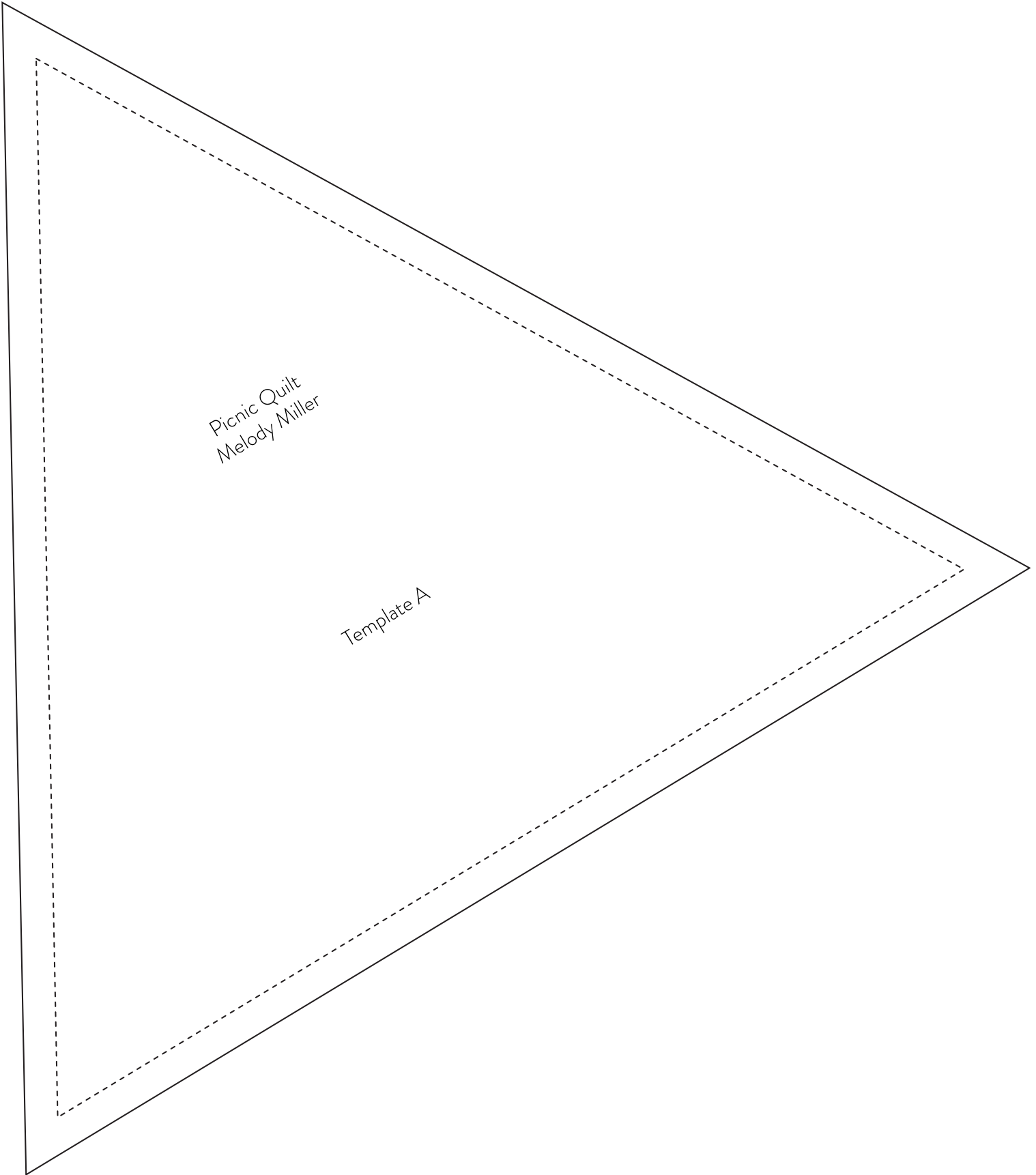
Picnic Quilt
Melody Miller

Template B

Template C



1" square



Picnic Quilt
Melody Miller

Template A