

BARNLSLEY

FACTS & FIGURES SUMMARY 2012

Please note that the information in this fact sheet is based on 2011 data which is the most up to date available.

DEMOGRAPHICS

Population Estimates

Total Number of People in 2010 (Source: ONS)

	0-15 years	16-64 years	65 years & over	All Ages
England	9,766,300	33,861,400	8,606,300	52,234,000
Yorkshire & the Humber	972,700	3,460,900	867,700	5,301,300
Barnsley	42,500	146,600	38,500	227,600

Percentage of the Total Population (Source: ONS)

	0-15 years	16-64 years	65 years & over
England	19	65	16
Yorkshire & the Humber	18	65	16
Barnsley	19	64	17

Using the 2010 figures above Barnsley has a slightly higher percentage of people aged 65 and over living in the borough compared to both the England and regional average.

Population Projections

The Office for National Statistics (ONS) 2008 Population Projections for Barnsley forecast that the total population will rise to 236,000 by 2015 and to 244,700 by 2020. These projections show that the proportion of those aged 65 and over is increasing slightly over the years and will reach 20% of the total population by 2020 (this is a rise of 3% from the current position).

Ethnicity

ONS 2009 estimates show the number of Barnsley residents who are of a non-‘white-British’ (i.e. any background except White British) is 4.9% this is a rise of 1.2% since 2006.

Data from the January 2011 schools census show that the number of pupils in Barnsley schools who are both resident in the borough and who are from a non-‘White-British’ background was 1,402 or 5.2%.



Produced by Liz Pitt, Performance & Partnership Division,
Chief Executives Department

EDUCATION & SKILLS

Key Stage 2

	KEY STAGE 2					
	English and maths		English % L4+		Maths % L4+	
	2010	2011	2010	2011	2010	2011
England	73.0	74.0	80.0	82.0	79.0	80.0
Yorkshire & the Humber	72.0	72.0	78.0	80.0	79.0	79.0
Barnsley	69.6	73.1	75.5	79.2	78.2	80.3

(Source: DfE)

The table above illustrates that for Key Stage 2 in 2011 the percentage of pupils reaching Level 4 or above in English and Maths was 73.1% an increase of 3.5% from the previous year. This is slightly above the regional average but is still slightly below the national average; however, this gap is decreasing. The improvement is due mainly to a 3.7% rise in English but results are still slightly below both the regional and national average. There has also been a 2.1% rise in Maths which is now slightly better than both the regional and national average.

Key Stage 4

	KEY STAGE 4					
	5+A*-C % including English and maths		A*-C % English		A*-C % maths	
	2010	2011	2010	2011	2010	2011
England	53.5	58.9	66.0	69.0	60.0	65.8
Yorkshire & the Humber	51.7	54.6	N/A	N/A	N/A	N/A
Barnsley	40.2	44.4	57.2	56.9	46.4	49.6

(Source: DfE)

The table above illustrates that for Key Stage 4 in 2011 the percentage of pupils reaching 5 or more A* to C including English and Maths was 44.4%, an increase of 4.2% on the previous year. The English results were slightly worse in 2011 than 2010. The maths results in Barnsley improved by 3.2%; this followed the national trend.

Key Stage 2 to 4 Progress

	KEY STAGE 2 TO 4 PROGRESS			
	English % expected progress		Maths % expected progress	
	2010	2011	2010	2011
England	69.3	71.8	62.0	64.8
Yorkshire & the Humber	65.8	68.6	57.0	59.0
Barnsley	59.4	60.5	52.7	43.6

(Source: DfE)

The table above illustrates the progress made by pupils from Key Stage 2 to 4 in both English and Maths. The results show that Barnsley pupils are still below both the regional and national average in expected progress for English and Maths.



BARNSLEY
Metropolitan Borough Council

Produced by Liz Pitt, Performance & Partnership Division,
Chief Executives Department

Qualifications (Jan 2010-Dec 2010)

	NVQ4 or above		NVQ3 or above		NVQ2 or above		NVQ1 or above		No qualifications	
	2009	2010	2009	2010	2009	2010	2009	2010	2009	2010
England	29.6	31.1	18.9	50.7	65.0	67.0	78.9	80.3	12.1	11.1
Yorkshire & the Humber	26.6	26.4	47.0	47.4	63.5	64.2	78.6	79.0	12.8	12.8
Barnsley	18.3	19.2	38.1	40.1	56.8	61.1	74.9	78.9	15.3	13.5

(Source: ONS population survey)

The table above illustrates the percentage as a proportion of the resident population of the area aged 16-64. Barnsley figures for NVQ1 or above to NVQ4 have all improved between 2010 and 2009 causing the number of people with no qualifications to decrease.

HEALTH

Life Expectancy from Birth

	Males		Females	
	2007-2009	2008-2010	2007-2009	2008-2010
England	78.3	78.6	82.3	82.6
Yorkshire & the Humber	77.4	77.7	81.5	81.8
Barnsley	76.4	76.8	80.1	80.4

(Source: National Statistics)

Life expectancy at birth in Barnsley is increasing from 76.4 years in 2007-09 to 76.8 years in 2008-10 for men and from 80.1 years to 80.4 years for women over the same time period. Nevertheless the gap in life expectancy between Barnsley and England has widened, as nationally life expectancy has improved at a faster rate, particularly for men.

Cancer Under 75s deaths per 100,000

	Directly age-standardised rates (DSR)	
	2007-09	2008-10
England	112.1	110.1
Yorkshire & the Humber	118.4	116.3
Barnsley	143.2	140.5

(Source: National Statistics)

Premature mortality from cancer in Barnsley has decreased from 143.2 per 100,000 population in 2007-09 to 140.52 per 100,000 population in 2008-10. Although, Barnsley has significantly higher premature cancer mortality rate compared to the national average.



Produced by Liz Pitt, Performance & Partnership Division,
Chief Executives Department

Circulatory Diseases Under 75s deaths per 100,000

	Directly age -standardised rates (DSR)	
	2007-09	2008-10
England	70.5	67.3
Yorkshire & the Humber	78.1	75.5
Barnsley	86.7	84.7

(Source: National Statistics)

Premature mortality from circulatory disease in Barnsley has decreased from 86.66 per 100,000 population in 2007-09 to 84.70 per 100,000 population in 2008-10. Although, Barnsley has significantly higher premature circulatory disease mortality rate compared to the national average.

All Cause Mortality Rates per 100,000

	Directly age -standardised rates (DSR)			
	Males		Females	
	2009	2010	2009	2010
England	652.3	636.1	459.7	454.8
Yorkshire & the Humber	696.3	674.2	492.1	489.4
Barnsley	762.4	755.4	581.2	554.8

(Source: National Statistics)

All age all cause mortality rates in Barnsley have decreased from 762.42 per 100,000 in 2009 to 755.41 per 100,000 population in 2010 for men, and from 581.16 per 100,000 population to 554.79 per 100,000 for women over the same time period.

Conceptions Rates per 1,000 Female Population Aged 15-17 years

	Rates per 1000 Female Population 15-17yrs	
	2006-08	2008-10
England	40.5	38.1
Yorkshire & the Humber	47.3	44.1
Barnsley	52.0	53.2

The most recent figures for 2008-2010 show that rates in Barnsley are significantly higher than both the National and regional average. Figures for Barnsley's 15-17 year old girls have increased slightly; now to a rate of 53.2 per 1,000.

Disability Living Allowance

	% of the Total Population	
	2010	2011
England	5.0	5.0
Yorkshire & the Humber	5.6	5.7
Barnsley	8.8	8.8

(Source: DWP)



Produced by Liz Pitt, Performance & Partnership Division,
Chief Executives Department

The table above illustrates the percentage of the total population claiming Disability Living Allowance. These figures show that the rate in Barnsley has remained the same over the two year period and is significantly higher than both the national and regional average.

Attendance Allowance

	% of the Population Aged 65+	
	2010	2011
England	17.3	17.1
Yorkshire & the Humber	16.3	16.0
Barnsley	18.3	18.0

(Source: DWP)

The table above illustrates the percentage of the population aged 65+ claiming Attendance Allowance. These figures show that the rate in Barnsley has slightly decreased over the two year period these figures are still higher than both the national and regional average.

LABOUR MARKET & ECONOMY

	Economically active		In employment		Unemployed (model-based)	
	Oct 2009- Sept 2010	Oct 2010- Sept 2011	Oct 2009- Sept 2010	Oct 2010- Sept 2011	Oct 2009- Sept 2010	Oct 2010- Sept 2011
England	76.5	76.2	70.5	70.1	7.7	7.8
Yorkshire & the Humber	75.0	75.0	68.4	67.8	8.6	9.5
Barnsley	73.4	74.0	66.3	65.8	9.7	10.9

(Source: ONS Annual Population Survey)

In Barnsley there is a slight increase in the number of those who are economically active between October 2009 and September 2011, a picture that is not reflected both regionally and nationally where there is either no change or a decrease. In the same time frame both employment and unemployment figures have risen in Barnsley, regionally and nationally.

BENEFITS

Claiming a Benefit

	% of the Working Age Population	
	2010	2011
England	14.0	14.1
Yorkshire & the Humber	15.3	15.4
Barnsley	20.7	23.3

(Source: DWP)

The percentage of the working age population claiming a benefit has risen during 2010 and 2011. These figures are significantly higher in Barnsley compared to both the national and regional average with the gap becoming wider during this period.



Produced by Liz Pitt, Performance & Partnership Division,
Chief Executives Department

Income Support

	% of the Working Age Population	
	2010	2011
England	4.5	4.2
Yorkshire & the Humber	4.5	4.3
Barnsley	5.9	5.6

(Source: DWP)

The percentage of the working age population claiming Income Support has decreased slightly between 2010 and 2011. Barnsley has a greater number of its working age population reliant on this benefit compared to both the national and regional average.

Incapacity Benefit/ Severe Disablement Allowance

	% of the Working Age Population	
	2010	2011
England	3.9	3.7
Yorkshire & the Humber	4.2	4.0
Barnsley	6.8	6.6

(Source: DWP)

The percentage of the working age population claiming Incapacity Benefit / Severe Disablement Allowance has decreased slightly between 2010 and 2011. Barnsley has a greater number of its working age population reliant on this benefit compared to both the national and regional average.

Pension Credit

	% of the Population Aged 60+	
	2010	2011
England	26.9	26.1
Yorkshire & the Humber	29.6	29.1
Barnsley	32.7	32.3

(Source: DWP)

The percentage of the population aged 60+ claiming Pension Credit has decreased slightly between 2010 and 2011. Barnsley has a greater number of its elderly population receiving this credit compared to both the national and regional average.

CHILDREN & FAMILIES

Child Poverty

	% of Children in "Poverty"	
	2008	2009
England	20.9	21.3
Yorkshire & the Humber	21.4	21.9
Barnsley	23.1	24.2

(Source: HM Revenue & Customs)



Produced by Liz Pitt, Performance & Partnership Division,
Chief Executives Department

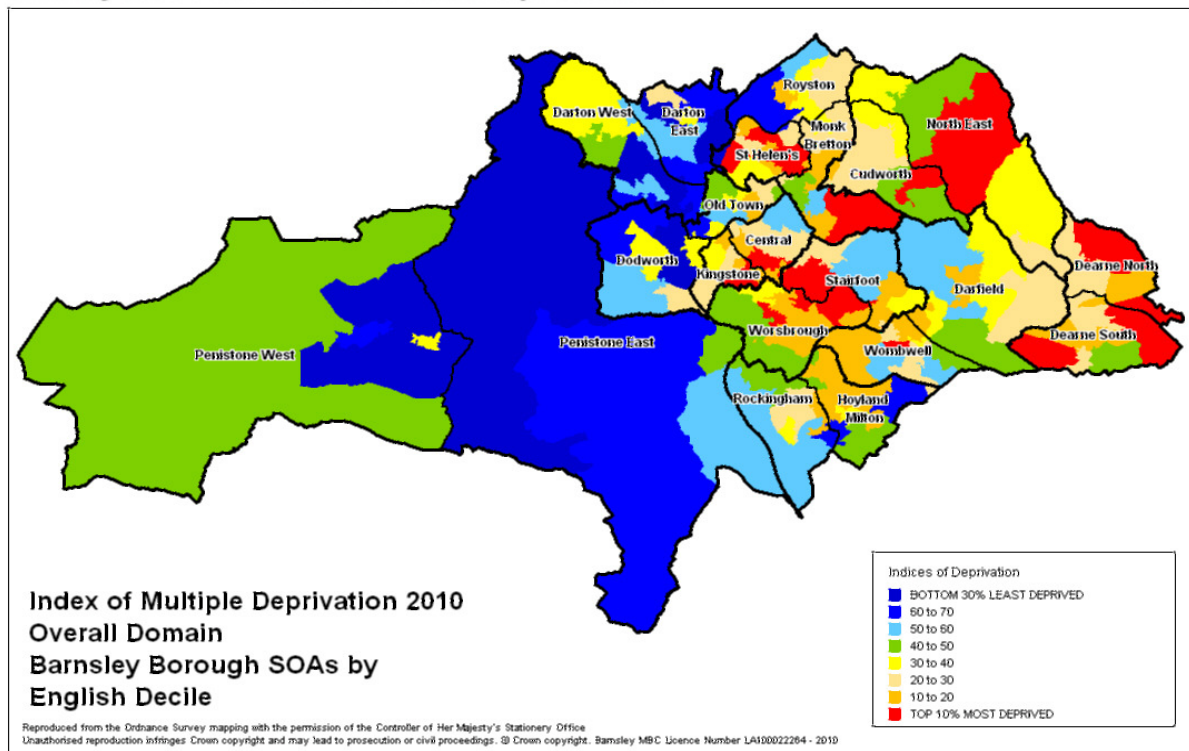
The above figures (taken before the recession) show that the number of children in “Poverty” had risen from the previous year, at that point Barnsley has almost 1 in 5 children in poverty.

DEPRIVATION

Using the Indices of Deprivation (ID) 2004 Barnsley was ranked 28th out of 354 most deprived local authorities in England using the Rank of Average and fell within the 8% most deprived areas in England. In 2007 it changed to 43rd and fell within the 12% most deprived areas in England. In 2010 Barnsley was ranked 47 out of 326¹ most deprived districts in England and fell within the 15% most deprived areas in England. These trends illustrate improvements for Barnsley as deprivation has reduced. However, it should be considered that there has been some indicator and minor amendments to methodology which can cause some variation. Also the Indices of Deprivation are not a direct measure of deprivation, and only show the relative positions of areas ranked across England at a particular time point.

In the areas of Kendray, Athersley, Grimethorpe and New Lodge where there has been significant financial investment, most areas have either remained the same or seen slight improvements. Of these the areas, those which have seen the largest changes are those which have experienced major housing redevelopment, such as in the centre of Kendray and in Grimethorpe. However, these areas still remain in an overall deprived state in accordance to this measure.

Barnsley MBC Performance & Partnerships Division



(Source: CLG)

¹ Number of local authorities changed in 2007 due to a number of mergers & local government reorganisation.



BARNSELY
 Metropolitan Borough Council

Produced by Liz Pitt, Performance & Partnership Division,
 Chief Executives Department