

 HANJIN HEAVY INDUSTRIES
& CONSTRUCTION CO., LTD.

<http://www.hanjinSC.com>

*Management
for Creation*

CORPORATE IDENTITY

A legend in shipbuilding and construction is now taking the leap to the next level.

Passion and challenging spirit drive us,
while unrivalled technology supports our vision to become a world leader.
Moving towards a prosperous future,
Hanjin Heavy Industries & Construction(HHIC).



'CIRCLE OF CREATION'

Our new corporate identity expresses the enterprising spirit of HHIC in the motif of a blue circle. The unrefined, irregular circle signifies our creative spirit and endless quest to explore new frontiers, the innovation and changes achieved through such pursuits, growth and development, and limitless possibility. The two circles each represent the past and future of HHIC, the company and our clients, as well as management and employees. Cooperation and harmony between them provide the foundation for creating new values and a new future at HHIC. While the blue circle stands for creativity, trust, future and growth, the aqua blue circle behind it symbolizes our past. HHIC was first launched under the philosophy

that "business is an art" and the pioneering spirit of our predecessors continues today through our commitment to furthering the national economy. The overlapping, darker blue area shows the current status of HHIC, illustrating how our drive towards the future is firmly grounded in today. The blue circle which seems to be advancing forward is our future, expressing our will to create a new future by embracing challenges as well as the perpetuity of HHIC. HHIC is now poised to advance to the next level by continuing to adhere to and develop our founding philosophy, and by encouraging harmonious cooperation among all HHIC employees.

CONTENTS

CORPORATE IDENTITY	_ 01
OUR VISION	_ 02
MANAGEMENT PHILOSOPHY	_ 03
CORPORATE PROFILE	_ 08
BUSINESS OVERVIEW	_ 09
• SHIPBUILDING DIVISION	
SHIPBUILDING	_ 10
SPECIAL SHIPS	_ 11
SUBIC SHIPYARD	_ 12
• CONSTRUCTION DIVISION	
ARCHITECTURAL WORKS	_ 14
HAEMORO	_ 15
INFRASTRUCTURE	_ 16
PLANT & FACILITIES	_ 17
RESEARCH & DEVELOPMENT	_ 18
HISTORY	_ 20
NETWORK	_ 21

OUR VISION

Our promise to you,
is a new future in shipbuilding and
construction for the 21st century.

Having pioneered shipbuilding and construction in Korea over the past 70 years, HHIC is now on the threshold of being reborn as a world-class, comprehensive provider of global shipbuilding, construction, engineering and leisure services.

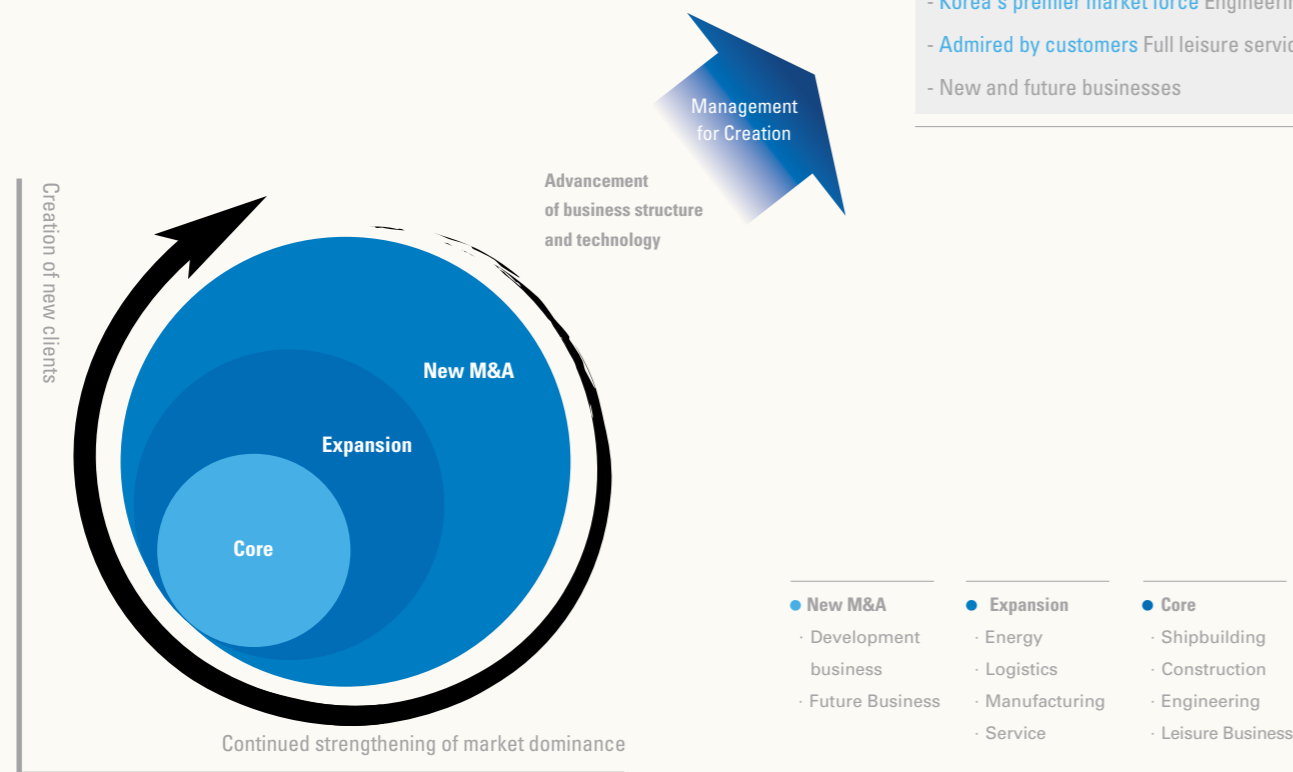
By remaining at the industry forefront, we have acquired superior technology, a solid financial structure, advanced management methods, high-tech information infrastructure and an outstanding group of top-notch professionals. This in turn, has allowed us to further hone our expertise in transportation, manufacturing of logistics tools and integrated construction, venture into promising new businesses, and increase our competitiveness.

The organic ties between our R&D Center, Yeong-do Shipyard and Subic Shipyard in the Philippines will drive our growth into a global shipbuilder capable of constructing high-technology, high-value added vessels and super-sized vessels.

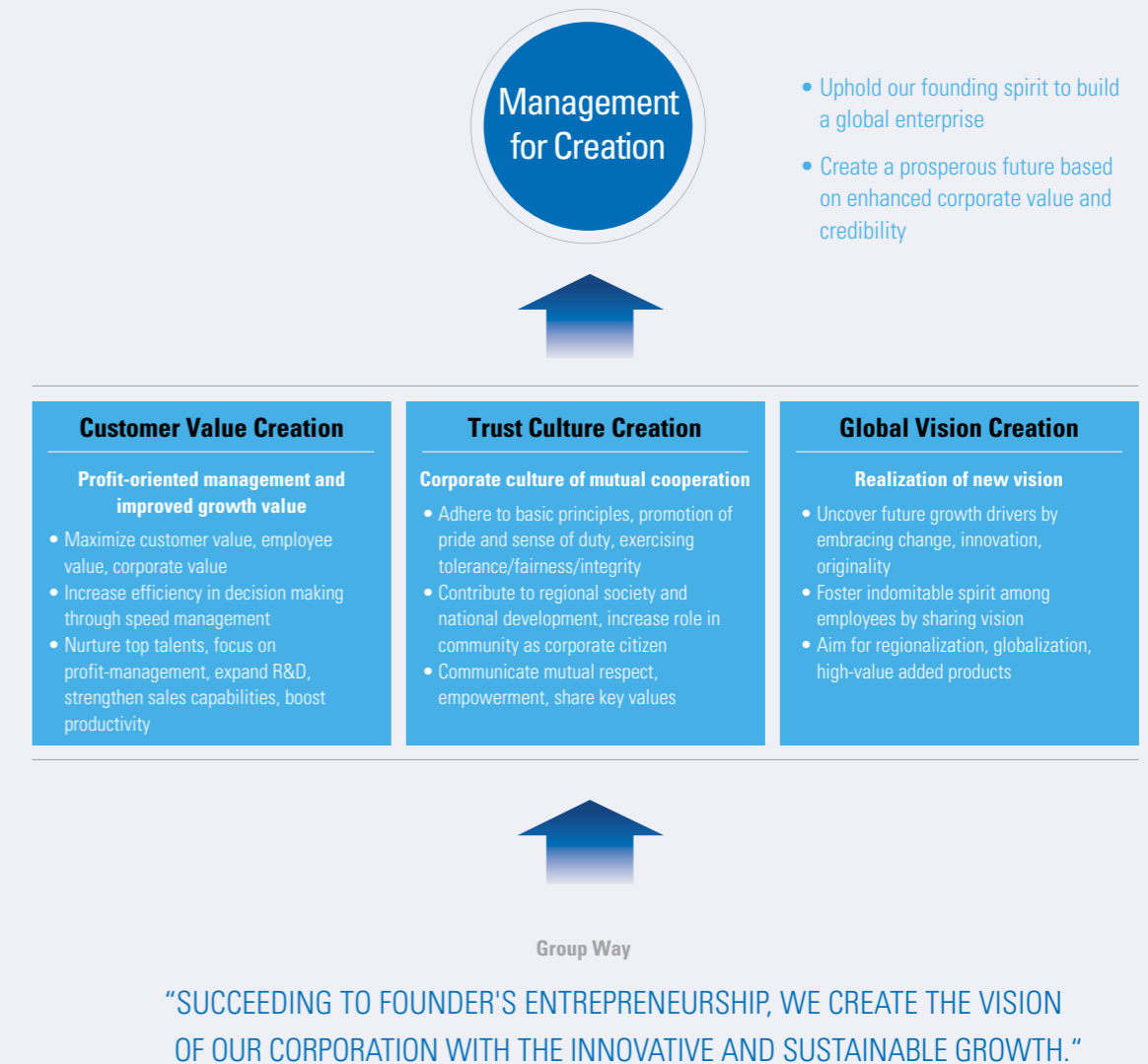
Our efforts to realize our vision will continue until the day HHIC stands as a central force in the global shipbuilding and construction industry.

Hanjin Heavy Industries & Construction Group 2015 WAY

‘A global company respected by world citizens’



MANAGEMENT PHILOSOPHY



Starting a creative revolution
for a better future - HHIC

The 21st century is dubbed the era of creativity and imagination. Only companies that can move and provide new value to its customers will be able to grow and look forward to new opportunities. We create new value when a client places their trust in us and working together in harmonious cooperation results in synergies and an advanced corporate culture. When we devote ourselves to innovation, we are preparing for a more prosperous future. The process of creation requires patience, passion, trust and hope. When innovation and its results are added, the road to creation will ultimately lead to another opportunity to leap forward. Creative management will pave the way to a wider stage and a more advanced future for HHIC. Creative revolution is the key to the future of HHIC.



HANJIN MUSCAT, LNG Carrier



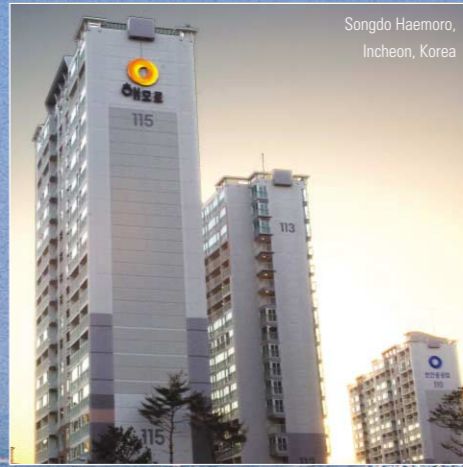
Subic Shipyard, Philippines



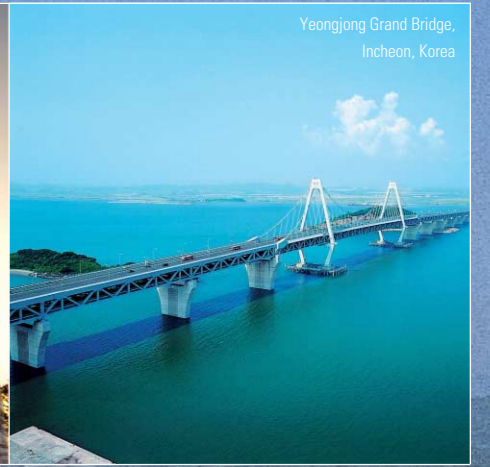
MOVING FORWARD INTO THE WORLD

Leaping towards the center of the global stage - HHIC

Driven by its pioneering spirit, HHIC has continued along the path of shipbuilding, construction and plant construction to grow into a comprehensive shipbuilding and construction company with world-class competitiveness. Armed with valuable technology and know-how amassed over the years, and the passion of its people, HHIC is now preparing to make another leap forward to become a central presence in the global shipbuilding and construction industry.



Songdo Haemoro,
Incheon, Korea



Yeongjong Grand Bridge,
Incheon, Korea

LEADING THE GLOBAL MARKET

World-class technology - HHIC

Despite its numerous past accomplishments, it is the future which holds the most promise for HHIC. Its insights and creativity have resulted in world-class technology, helping to build Korea's reputation as a leader in shipbuilding and construction. Furthermore, we are setting new standards around the world as a leading shipbuilding and construction firm with our global infrastructure.

REALIZING DREAMS OF PROSPERITY - HHIC

Customer satisfaction has always been, and remains a top priority, at HHIC. Our past and future are characterized by our unswerving devotion to providing customers with leading technology, quality and thoughtful service. HHIC shares your dreams for the future. Our vision and firm conviction in the future will drive the changes to create a more prosperous future and beautiful life for all.

● SHIPBUILDING

Building the world's first
and the world's best with
Hanjin technology

Founded as Korea's first shipbuilding company in 1937, HHIC has built around 1,000 vessels for diverse purposes. HHIC has grown into the country's leading shipbuilder, creating numerous "firsts" along the way, not only in Korea but also in Asia and even the world.

Along with the Yeong-do Shipyard in Busan, the shipyards in Ulsan and Masan have a combined annual building capacity of one million DWT. Powered by experience and technologies accumulated over 70 years, HHIC is recognized as one of the top-10 shipbuilders in the world specializing in high-tech, high-value added vessels. HHIC has a diverse vessel portfolio which includes LNG carriers, full container ships, chemical tankers, oil and petroleum products carriers, reefer vessels, roll-on roll-off (RO-RO) vessels, and cable ships.

Harnessing its technological acumen, HHIC is poised for another leap forward. The Subic Shipyard in the Philippines, currently under construction, will present the future vision for shipbuilding in the age of global competition. The yard in Subic Bay will be an important link in our global LNG carrier strategy. Our long-term goal is to reinforce our capacity to produce 10 LNG carriers annually. The LNG carrier initiative and expertise in container ships will further raise the value of HHIC.

● CONSTRUCTION

Extending the realm of
construction with
technology of the future

HHIC has flawlessly executed a wide range of construction projects around the world. Along with the latest advances in building technology, these undertakings bear the spirit of workmanship and attention to detail that exemplify HHIC. We have demonstrated our leadership in Korea with the nation's first steel-framed structure, the Marine Center Building, which was completed in 1968. Our expertise is also evident in numerous infrastructure projects such as roads, ports, dams and airport terminals. We have also gained recognition overseas with the successful completion of projects in Guam, the Philippines, Malaysia, Saudi Arabia and Iraq.

HHIC is spearheading the drive for a new construction culture for the 21st century, realizing customer satisfaction in diverse areas, from intelligent buildings to modern facilities for financial institutions, schools and research centers. Our reach also extends to hotels, hospitals, sports and leisure complexes, and logistics facilities. We are now broadening our scope and gaining prominence in residential construction.

The launch of the 'Haemoro' brand signaled HHIC's expansion into apartment construction. Haemoro means a place where the sun always shines. We have gained credibility at home and abroad, and our superior technology has been recognized across the globe. Building on our strong foundation, we are erecting environment-friendly, premium apartment buildings that inspire customers while promoting humanism in construction.

WE MAKE A NEW WORLD

Driven by a relentless pursuit of change and innovation, HHIC has been extending its global reach with its three core businesses, namely shipbuilding, construction and plant construction. HHIC will continue to take on new challenges to emerge as a first-rate shipbuilding and construction company of the 21st century.

- Shipbuilding
- Special Ships
- Architectural Works
- Infrastructure
- Plant & Facilities

SHIPBUILDING

Commanding the world's waters with cutting edge technology

SYMBOL OF KOREAN SHIPBUILDING

As the cradle of shipbuilding in Korea, HHIC has pioneered and propelled the nation's shipbuilding business for the past seven decades. Each vessel we produce contains the spirit of dedication and craftsmanship unique to HHIC.

The New Shipbuilding Division produced and delivered six 30,000 DWT oil tankers to Gulf Oil of the United States in 1974. Since then, HHIC has built around 1,000 vessels. These include a wide array of vessels including container ships, oil and petroleum products carriers, reefer vessels, bulk carriers, chemical tankers, pulp carriers, roll-on roll-off (RO-RO) vessels, LPG carriers, cable ships, dredgers, semi-submersible drilling rigs, and offshore structures.

"SHIPBUILDING POWERHOUSE" PROVEN BY COMPETITIVE TECHNOLOGY

With a firm conviction that technology spells the future, HHIC has spared no investment in developing new technologies. As a result, we are recognized around the world as the foremost expert in container ships. We have produced some 200 container carriers, ranging in capacity from 700 TEU to 8,100 TEU. We have also incorporated information technology into shipbuilding, with the end result being a highly advanced production system where all processes are automated. HHIC is now utilizing its competitive technology to create environment-friendly vessels with high added value such as RO-PAX, super-sized container ships and cruise ships.



1 2
3



1. MSC BUSAN, Container Vessel(8,030 TEU)
2. GPE(Grand Pre-erection)
3. HANJIN PYEONGTAEK, LNG Carrier

SPECIAL SHIPS

Ushering in the marine era of the 21st century

PIONEER OF SPECIAL VESSELS

HHIC has built more patrol boats and special ships than any other shipbuilder in Korea. As the local leader in special ships, we have realized a world of advanced technology on the high seas. From landing ships and next-generation high-speed patrol boats to air cushion vehicles, HHIC has been a pioneer of special ships based on its unrivaled technology and rich experience, contributing to strengthening Korea's naval defense capabilities and global maritime technology.

Starting off with Korea's first patrol boat, Haksaeung, in 1972, HHIC has built high-speed boats, frigates, convoy ships, landing ships, submarines and hovercrafts. We have also exported around 100 special ships including patrol boats and naval support vessels, to regions such as Southeast Asia, China, and Central and South America.

WORLD LEADER IN SPECIAL SHIPS

The 21st century will be the age of the seas. HHIC is directing its accumulated technology and abundant know-how into building high value added ships while cementing our position as a world-class creator of special vessels by maintaining close ties with our clients. Recently, demand has been growing for bigger, faster and automated patrol boats that have stealth capabilities. To meet this demand, HHIC is proactively carrying out R&D to build ever more advanced patrol boats.



1
2
3



1. LPH(Landing Platform Helicopter)
2. Hydrographic Vessel
3. Hovercraft

SUBIC SHIPYARD

Subic Shipyard -
a global base nurturing
dreams of the future



CRUISING AT HIGH SPEED TOWARD OUR GOAL

The Subic Shipyard will cover an area of 2.3 million square meters in the Subic Bay Freeport Zone in the Philippines. It will enable HHIC to build super-sized oil carriers, which has not been possible to date due to capacity constraints. The yard in Subic Bay will help us reach our goal of joining the world's top-five shipbuilders within the next six years and vying for the No. 1 spot 10 years from now. The Subic Shipyard will be utilized to construct ships and offshore plants while also generating future projects and synergy effects. That, in turn, will position HHIC to serve as the bridge linking the world to Southeast Asia.

SUBIC SHIPYARD - A NEW GROWTH ENGINE

HHIC has played a vital role in making Korea a global shipbuilding powerhouse. However, competition is becoming fiercer as latecomers such as shipbuilders in China are fast catching up. In addition, growing demand for larger-sized vessels has underlined the capacity constraints of Yeong-do Shipyard. These trends have highlighted the urgent need for a competitive yard system that allows for high efficiency and low costs. We are addressing this need with our blueprint to turn Subic Bay into the world's shipbuilding center.

A total of roughly KRW 700 billion will be invested in the shipyard in Subic Bay Freeport Zone from 2006 to 2016. The investment will go toward setting up a steel structure fabrication yard that will serve as a new growth engine for HHIC.

The Subic Shipyard will include a large dock (460m x 100m x 12.5m), cranes and various automation facilities. The dock will be able to carry out work on four ships simultaneously, making it possible to construct super-sized oil carriers which was previously not feasible due to capacity constraints. The R&D center and Yeong-do Shipyard in Busan will work in close cooperation to build container ships and LNG carriers. We will also explore new areas by linking our VLCC, FPSO and offshore plant businesses with our construction and leisure pursuits. Our advanced production bases in Korea and Subic Bay will enable our main worksite, the Yeong-do Shipyard, to concentrate on high-tech, high value added vessels. The end result will be heightened efficiency in our production system.

The new yard in Subic Bay will reinforce our ability to expand global operations and high-value added businesses and to uncover new growth drivers for our shipbuilding division. Not only that, it will provide new momentum for growth for the entire Hanjin Heavy Industries Group.

Combining thorough preparation, speedy execution and technological progress, the Subic Shipyard will evolve into a world-class shipbuilding and marine plant center that contributes to the economic advancement of the Philippines and Korea.



ARCHITECTURAL WORKS

Evolving into a global construction leader

SHAPING A NEW CONSTRUCTION CULTURE FOR THE 21ST CENTURY

HHIC ushered in a new era of modern construction in Korea by erecting the nation's first steel-framed structure. We have secured an advantageous footing with our exceptional technology and integrity. With standout achievements in diverse areas, HHIC has played a pivotal role in shaping a new construction culture for the 21st century. Our advanced techniques are showcased in the field of airport construction. Along with the passenger terminal at Incheon International Airport, our accomplishments include the airports at Gimpo, Gimhae, Daegu, Yangyang, Cheongju and Jeju Island. Our expertise has been recognized beyond Korea, leading us to the construction of the New Riyadh International Airport in Saudi Arabia.

CONSTRUCTION LEADER - HHIC

Incheon International Airport, Yeongjong Grand Bridge, Seoul-Busan high-speed railway, West Coastal Expressway, Munsu Stadium in Incheon - these are just a few of HHIC's feats that have made an indelible mark in Korean construction history. In 1968, we completed the Marine Center Building in downtown Seoul, the first steel-framed structure in the country. HHIC has continued to make a valuable contribution to Korea's economic progress with its participation in large-scale national projects such as airports, roads, bridges, railways, ports and dredging operations.



1. Incheon Munhak World Cup Stadium, Incheon, Korea
2. Suwon Private-capital Railway Station Building, Gyeonggi province, Korea
3. Incheon International Airport, Incheon, Korea

HAEMORO

Haemoro - a warm and sunny apartment, where the sun always shines

A PLACE THAT'S AS COZY AND PRECIOUS AS SUNLIGHT

Haemoro is a premium apartment created with HHIC's advanced technology that incorporates our nature-oriented and eco-friendly philosophy. Haemoro is the combination of two Korean words, "hae" meaning sun and "moro," a word from the olden days meaning group. It evokes an image of a warm living space filled with nature and sunlight. The Haemoro brand represents a resting place that is as precious and nurturing as the sun, the source of life. At the same time, it also represents a living space where nature and people, families and neighbors, and the modern and the traditional co-exist in harmony. While having all the basics essential to a home, Haemoro offers much more than the average apartment.

HAEMORO - THE DREAM OF FUTURE HOMES

Homes should evolve in step with changing lifestyles. Haemoro features space designed to let the sunlight linger, a unique and elegant interior where life becomes art, and various systems to ensure maximum convenience. An ideal combination of nature, man and technology, Haemoro is an upscale apartment complex where residents are free to dream of a happy future. More than a home, Haemoro shows HHIC's commitment to creating a new concept in residential space that builds on the present and the past.



1. Songdo Haemoro, Incheon, Korea
2. Haemoro Riverview, Seoul, Korea
3. Tongyeong Hanjin Rosehill Beach, Gyeongsang province, Korea
4. Gwangju Wolsan 2 Division, Gwangju, Korea

INFRASTRUCTURE

Promoting balanced regional development

EXPERTISE ACKNOWLEDGED THE WORLD OVER

HHIC has grown alongside the advancing Korean economy. We have written our company history with the seamless execution of projects across the globe by drawing on our cutting edge technology and tireless dedication. HHIC played a major role in creating the backbone for the development of Korean industries through participation in large-scale national projects such as highways, railroads, dams, airports and harbors. We leveraged our experience and technologies to branch out overseas, beginning with Guam. Our overseas works in places such as the Philippines, Malaysia, Saudi Arabia and Iraq have put Korea on the world's construction map.

GLOBALIZATION AND PROGRESS DRIVEN BY SUPERIOR ENGINEERING

Top-notch people, pioneering technology and up-to-date facilities have positioned HHIC as a world leading company with a reach that extends from the ground to the skies and to the seas. Well aware that today's research is the source of competitiveness tomorrow, we have constantly strived to develop and introduce new technologies and new construction methods. HHIC has been at the center of Korea's economic progress. Our proud history will serve as the foundation for a stronger and brighter future.



1
2 3



1. Yeongjong Grand Bridge, Incheon, Korea
2. Seoul-Busan Express Railway, Daejeon, Korea
3. Iligan-Butan Expressway, Mindanao, Philippines

PLANT & FACILITIES

Raising industry standards through advanced engineering and execution capabilities

PIONEER IN DOMESTIC PLANT BUSINESS

HHIC pioneered Korea's machinery field, manufacturing the country's first latches in 1962. Since then, we have grown into a comprehensive plant installer by perfecting our engineering and execution capabilities, in addition to amassing extensive experience in steel making, chemical, power, material handling, steel structure, and logistics territories. In particular, the coke and chemical facilities we provided for POSCO's steel mills in Pohang and Gwangyang as well as the production and installment of port container cranes and unloaders won us worldwide acclaim for first-rate technologies in coke plants and various harbor loading and unloading machinery. Our flawless execution extended to overseas projects ranging from the Agus Hydroelectric Power Plant in the Philippines, Lagos Thermal Power Plant in Nigeria and refinery facilities in Jordan.

READY AND ABLE WITH LEADING CAPABILITIES

With our specialized plants in Incheon, Yuldo and Dadaepo, which manufacture various industrial facilities, HHIC is focusing its capabilities on environmentally-friendly, construction-related and logistics system facilities by participating in major SOC projects. As we move forward, our goal is to maximize future value by actively developing automated items for the promising sector of logistics which integrates land, sea and air transportation in addition to taking part in a greater number of environmental, aerospace, off-shore plants and seabed facility endeavors.



1
2 3



1. Gangyang Steel Mill, Korea
2. Samcheonpo Thermal Power Plant, Gyeongsang province, Korea
3. Incheon International Airport Jet Fuel Supplying Facility(800,000 BBL), Incheon, Korea

RESEARCH & DEVELOPMENT

Future-oriented R&D system for technology that promotes prosperity and happiness



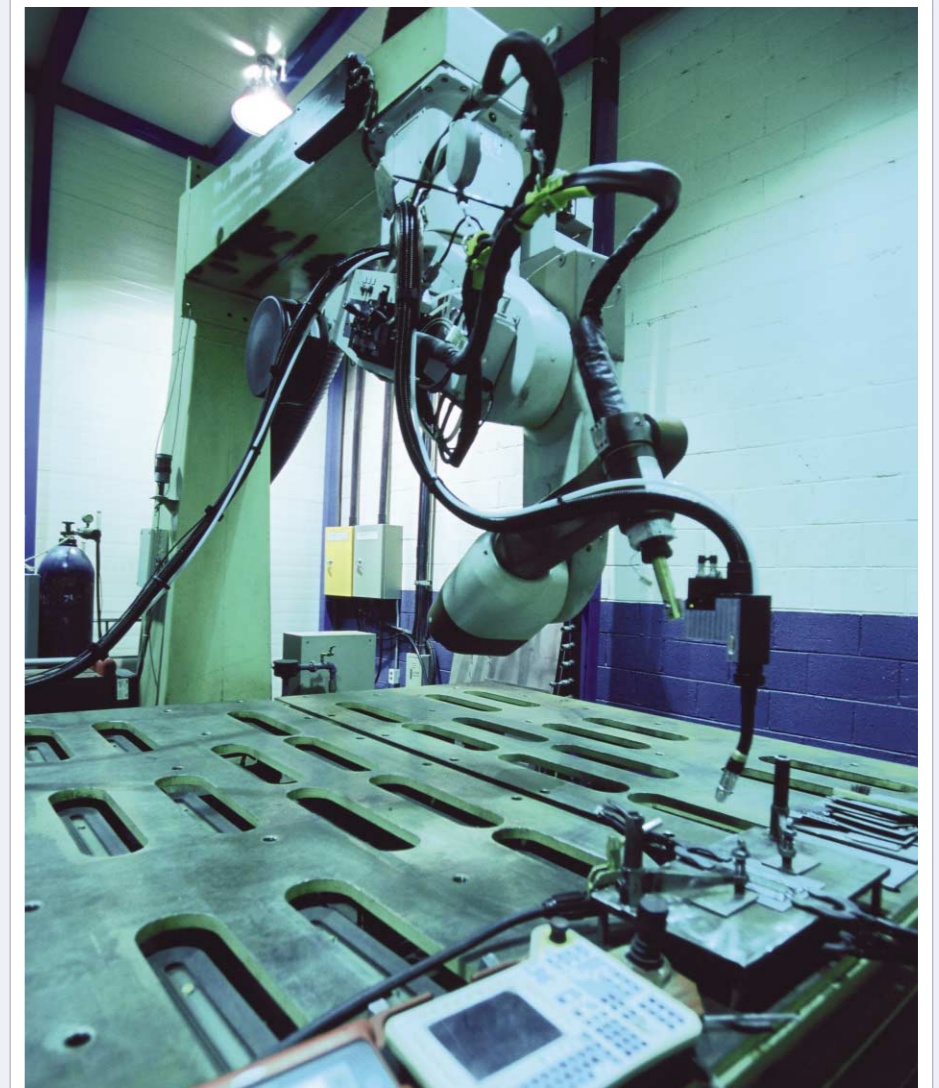
SHIPBUILDING

After building Korea's first steel vessel in 1937, HHIC has consistently devoted itself to technology development and investment. This dedication has culminated in a wide range of accomplishments over the years. In New Shipping, we triumphed in building an LNG ship and opened the era of super-size, high-speed container ships by recently adding an 8,100 TEU vessel to our portfolio, solidifying our position as a specialist builder of LNG and container ships. We are also actively meeting the changing needs of our clients through timely technologies including Korea's first IT-cable ship "Segyero" and highly-efficient RO-RO ships. In the area of Special Ships, we are concentrating R&D efforts in designing cutting-edge, next-generation vessels which reflect the current preference for larger, faster and more intelligent ships. Our technology in building air cushion vehicles has made us one of the world's leaders in the field. Development of futuristic ships is also one of our focal areas. Through lively exchange between industry and academia, HHIC is working on improving structural analysis, maneuverability, propeller performance, resistance and sea worthiness.

CONSTRUCTION

As part of efforts to promote changes in the construction industry from being labor-intensive and reliant on orders to one that is high-tech with high added value, HHIC set up the Technology Development Department in 1986 and Construction Technology Research Institute in 1991. These initiatives were instrumental in powering the company's growth by producing multiple patent applications and new technology developments. HHIC first introduced the NATM method to Korea when building the Seoul subway. The method facilitated traffic during construction, shortened the construction period and contributed to raising overall technological levels in subway construction. We also wowed both academia and the industry by becoming the first in Korea to employ the lift-up method in building the KAL ground depot at Gimpo. Moreover, Hanjin developed the Float Mating method by harnessing different tidal levels to build Yeongjong Grand Bridge that leads to Incheon International Airport. We also demonstrated engineering excellence through our seamless execution.

Our aim is to emerge as a comprehensive builder of environmentally-friendly living spaces that enrich our life. To this end, we are concentrating our resources on building a sound framework for the cutting-edge industry.



- 1
- 2
- 3

1. 6-axis Welding Robot
2. Measurement of floor impact noise in apartments
3. Truss Joints Test



A force that changed the world.
A force to usher in a new era.

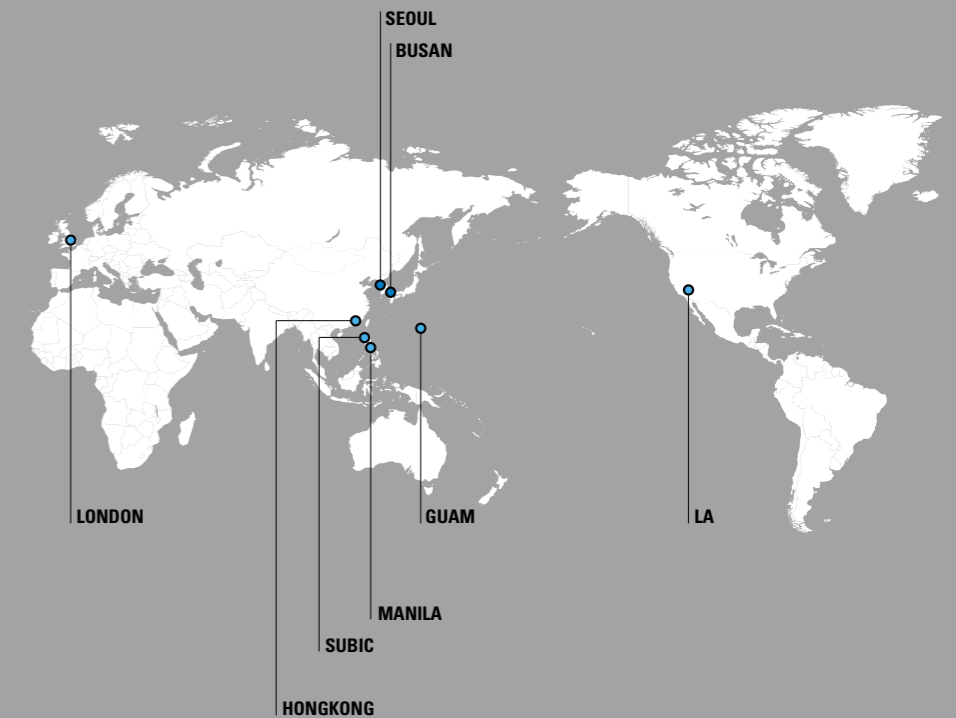
HISTORY

● Shipbuilding Division

1937	Chosun Heavy Industry Co., Ltd., established
1938	Korea's first steel ships manufactured
1945	The company placed under a government management committee and its name changed to Korea Shipbuilding & Engineering Corp. (KSEC)
1956	Company listed on the Korea Stock Exchange
1962	Machining tool lathes manufactured for the first time in Korea
1964	Korea's first freight cars manufactured
1968	KSEC privatized in accordance with the government's policy of privatization of state-run corporations
1969	Korea's first export of ships, 20 steel fishing vessels to Taiwan
1972	18,000-ton Bulk Carrier, PAN KOREA delivered, the first ship over 10,000 tons built in Korea
1973	Rolling stock exported from Korea for the first time, 225 freight cars to Malaysia
1974	Korea's first export of large vessels, six 30,000-ton product carriers delivered to Gulf of U.S. Designated as a Defense Industry Company
1977	Korea's first drilling rig built for AP of Denmark
1978	Korea's first chemical carriers exported to Stolt-Nielsen of Norway
1981	Donghae Shipbuilding Co., Ltd., present Ulsan Shipyard, acquired
1982	Operation of an overseas shipyard by Korea for the first time, Jeddah Ship Repair Yard in Saudi Arabia (-'87)
1983	Coke plants constructed at POSCO's Kwangyang Works, Completed (-'92)
1984	Korea's first reefer vessel exported to Salen of Sweden
1985	Building structure & facilities for thermal power plant in Lagos, Nigeria
1987	Post panamax class container crane installed in Oakland, California, USA
1989	Company name changed to Hanjin Heavy Industries Co., Ltd. (HHIC)
1992	Hanjin Osaka, a 4,000TEU class container carrier, selected as the world's great ship of the Year
1993	ISO 9001 certificate acquired(DNV/ABS)
1994	Took part in manufacturing rail cars for Korea train express (Seoul ↔ Busan)
1995	Asia's first membrane type LNG Carrier, Hanjin Pyeongtak delivered Korea's first rail cars capable of 200km/h exported to China
1996	The world's fastest 5,000TEU class containership, Hanjin London, delivered
1997	Korea's first woodchip carrier, Geoyang Majesty, delivered
1998	Korea's first cable-laying ship, Segaeo, delivered
1999	Hanjin Heavy Industries & Construction, Hanjin Engineering & Construction Co., Ltd. and Hanjin Construction Co., Ltd. - merged and renamed as Hanjin Heavy Industries & Construction Co., Ltd. Korea Tacoma Marine Ind., Ltd., present Masan Shipyard merged
2002	Received an order LPX Project from Korean Navy
2003	Received an order for nine giant 8,100TEU class container carriers, the largest models in the world
2004	Developed the world's first "underwater welding method of DAM use" (Acquired patent in August 2005)
2005	Spun off from Hanjin Group Delivered an 8,100 TEU container carrier, the largest in the world ('MSC Maeva') Awarded Korea's Gold Tower Order of Industrial Service Merit
2006	Official launching of Hanjin Heavy Industries & Construction Group Signed MOA on land lease for Subic Shipyard in the Philippines
2007	Selected as world's outstanding shipbuilder for 15th straight year (since 1992) One of the world's Top 10 shipbuilding companies

● Construction Division

1968	Hanil Development Co., Ltd., established, name changed to Hanjin Engineering & Construction Co., Ltd., in 1994
1971	Marine Transportation Center, the first steel-framed building in Korea, built Hanjin won orders in Ponape, Yap, U.S. trust territory in the Pacific, water supply and sewage facilities
1972	The first Korean construction company to enter the Malaysian market with the construction of an Oil Jetty, Tawau Port, Saba State
1973	The first Korean construction company to enter the Philippines market with the construction of the Kobato-General Santos Highway on Mindanao
1974	The first Korean construction company to enter the Saudi Arabian market with the construction of the Ummalajj-Alwagh Highway
1976	Presidential citation awarded, Order of Merit for National Prestige Abroad
1980	New Riyadh International Airport in Saudi Arabia constructed
1981	Ranked 69th among 250 global construction companies selected by the professional Engineering/Construction magazine ENR Nation's Industrial Silver Medal awarded on the 1st Construction Day Order won in Iraq for construction of SAMAWA Cement Factory
1983	Gimpo International Airport Passenger Terminal 2 constructed
1984	US\$2 Billion Construction Export Medal awarded
1987	Acquisition of Daehan Junsul Construction
1990	Completion of 1.6 million pyeong land reclamation work in Yuldo, Incheon
1991	Construction Technology Research Institute established
1992	Won site preparation work for Incheon International Airport
1994	Entered Japan market, distribution and logistics center in Yokohama constructed Construction of KAL Operations Center including aircraft maintenance hangar at Gimpo International Airport, using the lift-up engineering method for the first time in Korea
1995	ISO 9001 certificate acquired(ABS) Proponent for Build-Operate-Transfer Yeongjong Bridge connecting Incheon International Airport CEO Cho Nam-ho awarded Industrial Silver Medal on 30th anniversary of start of overseas construction
1996	Construction of Incheon International Airport Terminal building commenced(-2000) ISO 14001 environmental certificate acquired(ABS)
1997	Won Light Rail Transit Project in the Philippines
1998	Hanjin's engineering method for the construction of the deck of Yeongjong Bridge to Incheon International Airport taking advantage of the tidal range applied for the first time in Korea
1999	Hanjin Heavy Industries & Construction, Hanjin Engineering & Construction Co., Ltd. and Hanjin Construction Co., Ltd. - merged and renamed as Hanjin Heavy Industries & Construction Co., Ltd.
2001	Awarded the Gold Industrial Medal for the construction of Incheon International Airport Construction of Busan subway lines 3 and 9 Construction of container pier at Busan New Port
2002	Participated in the second stage of construction work for the runways at Incheon International Airport
2003	Won Seoul-Busan Express Rail Construction Project
2005	Spun off from Hanjin Group Acquired KOSHA 18001(Safety & Health Management System) certification in construction segment
2006	Official launching of Hanjin Heavy Industries & Construction Group Unveiled new CI and management philosophy of "creation management"
2007	Ranked 110th among 250 global construction companies selected by the professional Engineering/Construction magazine ENR Ranked 15th in Korea based on construction capability



NETWORK

Head Office

Shipbuilding

29, 5-Ga, Bongnae-dong,
Yeongdo-gu, Busan,
Korea (606-796)
tel. +82 51- 410-3240/3242
fax. +82 51-410-8465

Construction

546-1, Guui-dong, Gwangjin-gu,
Seoul, Korea (143-715)
tel. +82 2-450-8114
fax. +82 2-450-8101

Seoul Office

168-23, Samseong-dong,
Gangnam-gu, Seoul, Korea (135-090)
tel. +82 2-2006-7120/7130
fax. +82 2-2006-7116/7117

Busan Office

22-1, 4-Ga, Jungang-dong, Jung-gu,
Busan, Korea (600-751)
tel. +82 51-410-3114
fax. +82 51-410-3337

Yeongdo Shipyard

29, 5-Ga, Bongnae-dong,
Yeongdo-gu, Busan,
Korea (606-796)
tel. +82 51- 410-3240/3242
fax. +82 51-410-8465

Ulsan Shipyard

492, Yongjam-dong, Nam-gu,
Ulsan, Korea (680-070)
tel. +82 52-259-3114
fax. +82 52 259-3222

Dadaepo Factory

370-6, Dadae-dong, Saha-gu,
Busan, Korea (604-050)
tel. +82 51-260-3114
fax. +82 51-260-3005

Masan Shipyard

974-15, Yangdeog-dong, Hoewon-gu,
Masan, Gyeongnam,
Korea (630-493)
tel. +82 55-290-2900
fax. +82 55 290-2740

Yuldo Factory

394, Wonchang-dong, Seo-gu,
Incheon, Korea (404-210)
tel. +82-32-580-9114
fax. +82-32-580-9115

London Office

5th Floor, 3America Square, London
EC3N 2LR, United Kingdom
tel. +44 207 488-4848
fax. +44 207 488-4824
e-mail hhic.ldn@btclick.com

Manila Office

1128 University Parkway North
Bonifacio, Global City Metro Manila,
Philippines
tel. +63 2 837-8888
fax. +63 2 837-8839

LA Office

8506 Osage Avenue, Los Angeles,
CA 90045, USA
tel. +1 310 645-9011
fax. +1 310 645-9110

Guam Office

241 Farenholt Avenue Suite 103
(Oka Bldg.), Tamuning,
Guam 96913
tel. +1 671 646-4196/7
fax. +1 671 649-4194

Hongkong Office

1902, Office Tower,
Convention Plaza, 1 Harbour Rd.,
Wanchai, Hong Kong
tel. +852 2238-0602
fax. +852 2238-0610