

Map Legend (map on reverse)

SAFETY NOTE:

Due to hazards from historical mining activities in this park you must stay on the trails identified on this map.

Trailheads

hiking, horseback riding

hiking



Trails

King County-maintained | other

hiking, horseback riding

hiking only

Facilities and features

picnic area

hitching rail

point of interest

parking area

viewpoint

restrooms

waterfall

Publicly owned land

King County: Cougar Mountain Regional Wildland Park

other King County Park land

other park or open space

Other basemap features

incorporated city

unincorporated King County

wetland

arterial street gates

local street water tank

elevation contour (interval = 50 ft.)

Cougar Mountain Regional Wildland Park

Access

Red Town Trailhead

From I-90—Take Exit 13 and drive south on Lakemont Boulevard SE for 3.1 miles. Look for the entrance to the Red Town Trailhead on the left side of the road.

From I-405—Take Exit 10 and follow Coal Creek Parkway SE 2.4 miles to the shopping center. Turn left at the light onto SE 72nd Place and then left again at Newcastle Golf Club Road. Follow that for 1.9 miles. The entrance to the Red Town Trailhead is on the right side of the road just after the big bend.

Sky Country Trailhead

From I-90—Take Exit 13 and drive south on Lakemont Boulevard SE for 2.5 miles. Turn left on SE Cougar Mountain Way and then right on 166th Way SE. Follow 166th for .7 miles to its end. On the right is the Sky Country Trailhead parking lot. This lot includes space for horse trailers.

Anti-Aircraft Peak Trailhead

From I-90—Take Exit 13 and drive south on Lakemont Boulevard SE for 2.5 miles. Turn left onto SE Cougar Mountain Way. Follow the double yellow line. (The road will first swing left and become 168th Place SE, and then right to become SE 60th Street.) Turn off 60th Street uphill onto SE Cougar Mountain Drive. The road will change to gravel, and at the very end is the Anti-Aircraft Peak Trailhead, where you will find restrooms, picnic tables and a playground.

Jim Whittaker Wilderness Peak Trailhead

From I-90—Take Exit 15 and drive south on SR-900 (17th Avenue NW and then Renton-Issaquah Road SE) for 3.3 miles. Look for the trailhead sign and an asphalt driveway that goes uphill to the right.

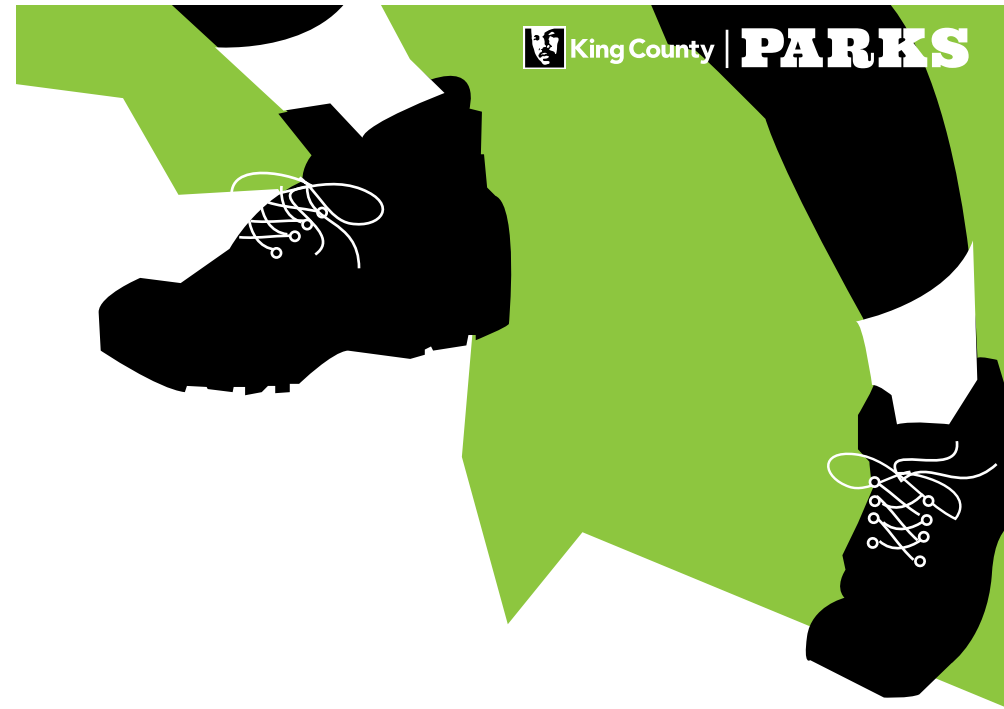
This information is available in alternative formats upon request. Please call 206-477-4527 or 1-800-325-6165.

Washington Relay Service: 1-800-833-6388.

For information about King County Parks, please call 206-477-4527.

Visit King County Parks on the Internet at www.kingcounty.gov/parks.

July 2015



King County | **PARKS**

COUGAR MOUNTAIN

Trail Lengths in Miles

Calculated from current digital data; older trail signs may indicate different values.

N2 Military Road Trail.....0.7	W6 Marshall's Hill Trail.....1.1	E3 Bear Ridge Trail.....1.5
N3 Radio Peak Trail.....0.4	W7 Indian Trail.....1.3	E4 Whittaker Wilderness Peak Tr...1.9
N4 Coyote Creek Trail.....1.1	W9 De Leo Wall Trail.....1.1	E5 Gombu Wilderness Cliffs Trail...1.3
N5 Klondike Swamp Trail.....0.9	W10 Bagley Seam Trail.....0.2	E7 Goode's Corner Trail.....0.2
N6 Lost Beagle Trail.....0.7	C1 Clay Pit Road.....1.3	E8 No Name Trail.....0.2
N7 Anti-Aircraft Ridge Trail.....0.7	C2 Red Town Creek Trail.....0.2	E9 Protector Trail.....0.4
N8 Cougar Pass Trail.....0.3	C3 Cave Hole Trail.....1.2	E10 West Tibbetts Creek Trail.....0.4
N9 Tibbetts Marsh Trail.....1.0	C4 Coal Creek Falls Trail.....0.7	E11 Squak Mtn. Connector Trail.....0.7
N10 Primrose Overlook Trail.....0.2	C6 Quarry Trail.....1.0	E12 Red Cedars Trail.....0.3
N11 Little Creek Trail.....0.4	C7 Fred's Railroad Trail.....0.6	E13 Precipice Top Trail.....0.3
W1 Wildside Trail.....1.0	C8 East Fork Trail.....0.7	E14 Military Ridge Trail (in park)....0.1
W2 Red Town Trail.....0.8	C9 By Pass Trail.....0.2	E15 Big Tree Ridge Trail.....0.9
W3 Rainbow Town Trail.....0.3	C10 Mine Shaft Trail.....0.3	S1 Far Country Trail.....0.3
W4 Steam Hoist Trail.....0.2	C11 Old Man's Trail.....0.3	S2 Shy Bear Trail.....1.7
W5 China Creek Trail.....0.3	C12 Nike Horse Trail.....0.3	S3 Deceiver Trail.....0.9
	C13 Sky Country Trail.....0.4	S4 Long View Peak Trail.....0.4
	E1 Shangri La Trail.....1.7	S5 Ring Road Trail.....0.4
	E2 Surprise Creek Trail.....0.6	S6 Licorice Fern Trail.....1.4

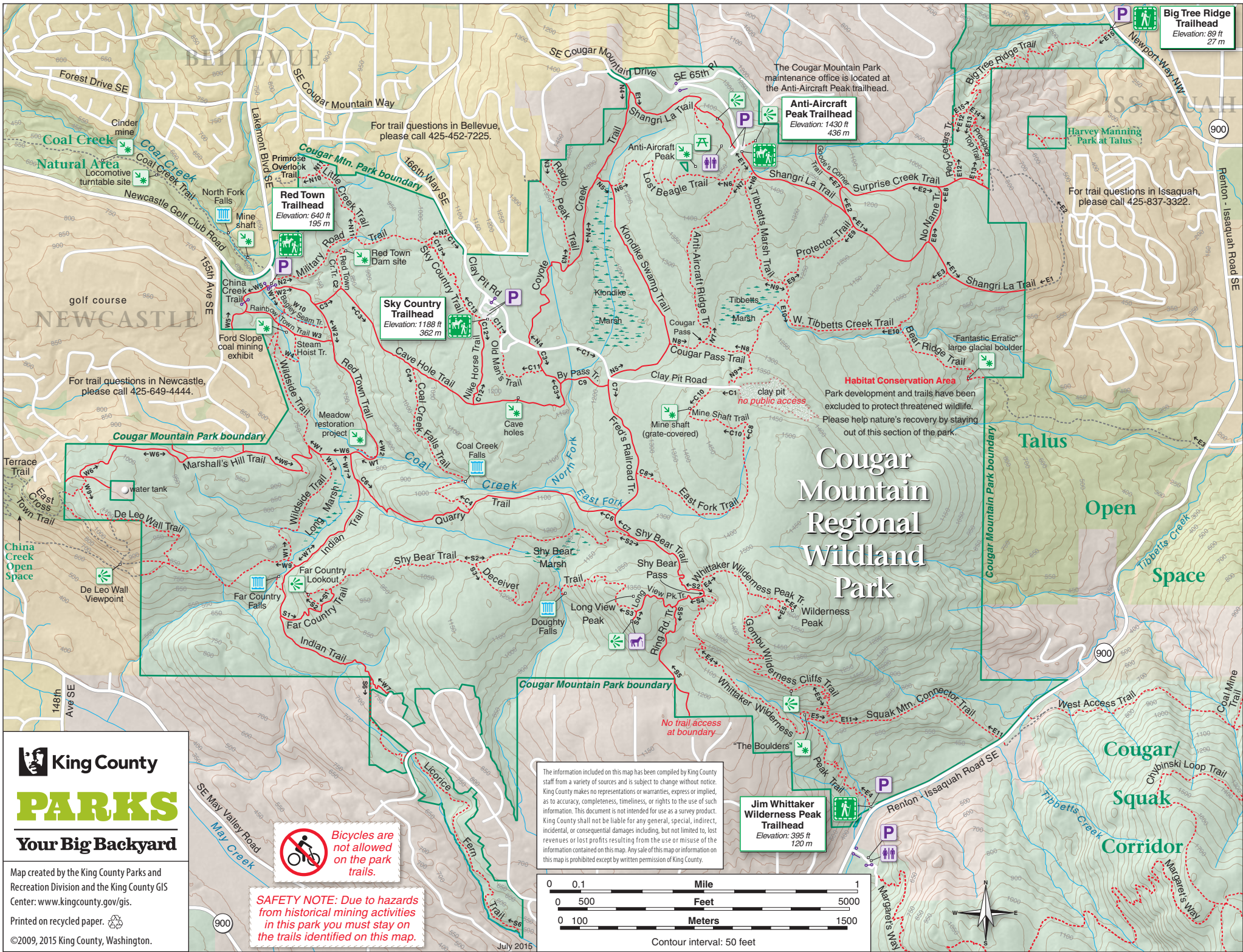
Cougar Mountain Regional Wildland Park is the gem of King County's 25,000-acre park system. Just minutes from Eastside cities such as Bellevue, Newcastle and Issaquah, Cougar Mountain Park provides an excellent example of our region's unique historical, cultural and natural heritage. Located in the "Issaquah Alps," Cougar Mountain Park preserves important wildlife habitat while offering ample opportunities for recreation.

"A GREAT Big GREEN AND Quiet Place"

Harvey Manning
1925-2006



Want the map on your phone? Text **KING COUGAR** to 468311
*Message & Data Rates May Apply



King County
PARKS
Your Big Backyard

Map created by the King County Parks and Recreation Division and the King County GIS Center: www.kingcounty.gov/gis.
 Printed on recycled paper.

©2009, 2015 King County, Washington.



SAFETY NOTE: Due to hazards from historical mining activities in this park you must stay on the trails identified on this map.

The information included on this map has been compiled by King County staff from a variety of sources and is subject to change without notice. King County makes no representations or warranties, express or implied, as to accuracy, completeness, timeliness, or rights to the use of such information. This document is not intended for use as a survey product. King County shall not be liable for any general, special, indirect, incidental, or consequential damages including, but not limited to, lost revenues or lost profits resulting from the use or misuse of the information contained on this map. Any sale of this map or information on this map is prohibited except by written permission of King County.

