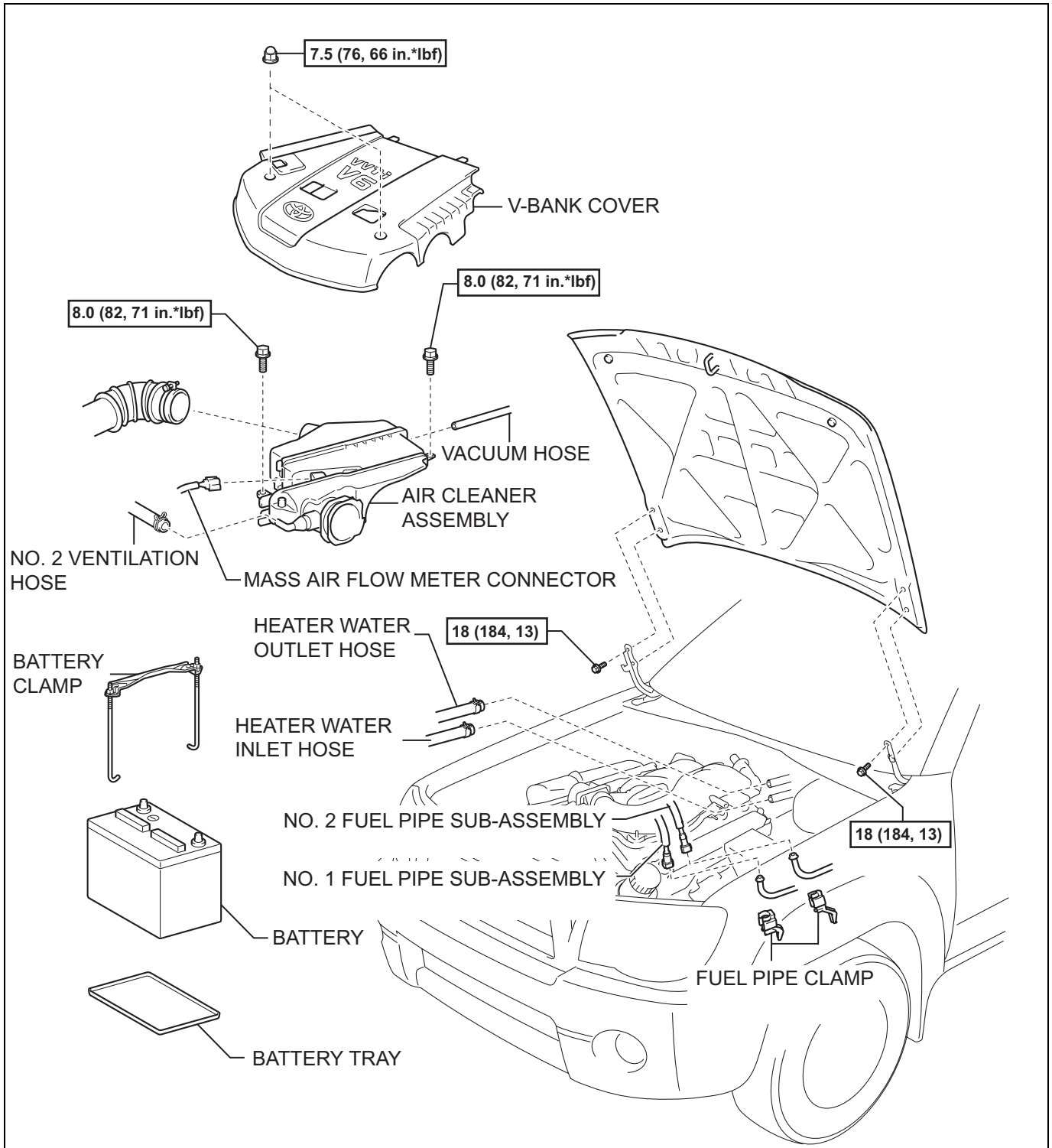


CYLINDER HEAD (for Bank 1 2WD)

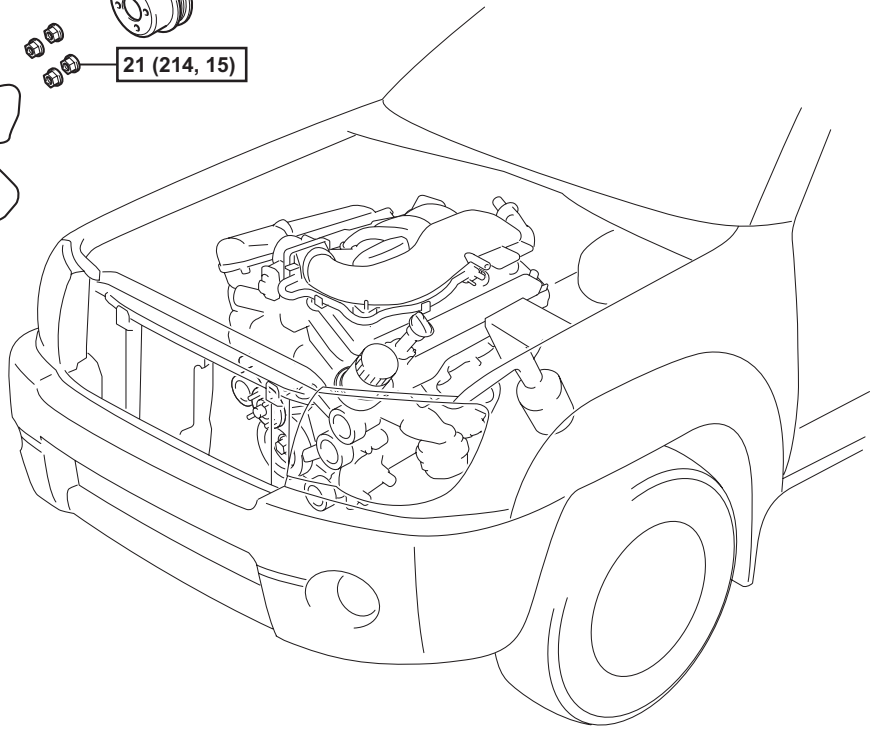
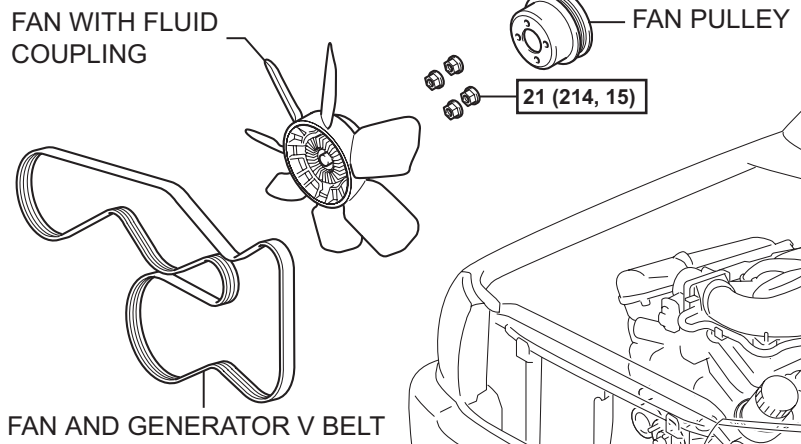
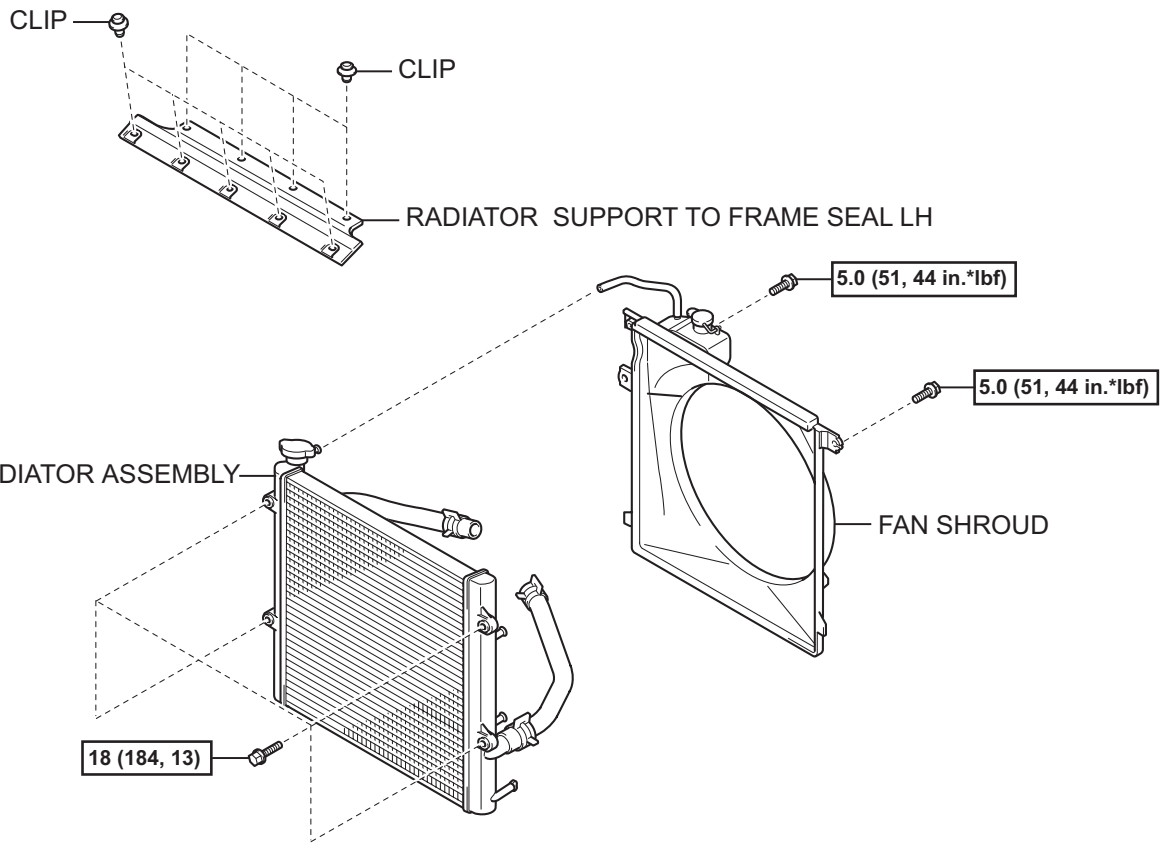
COMPONENTS



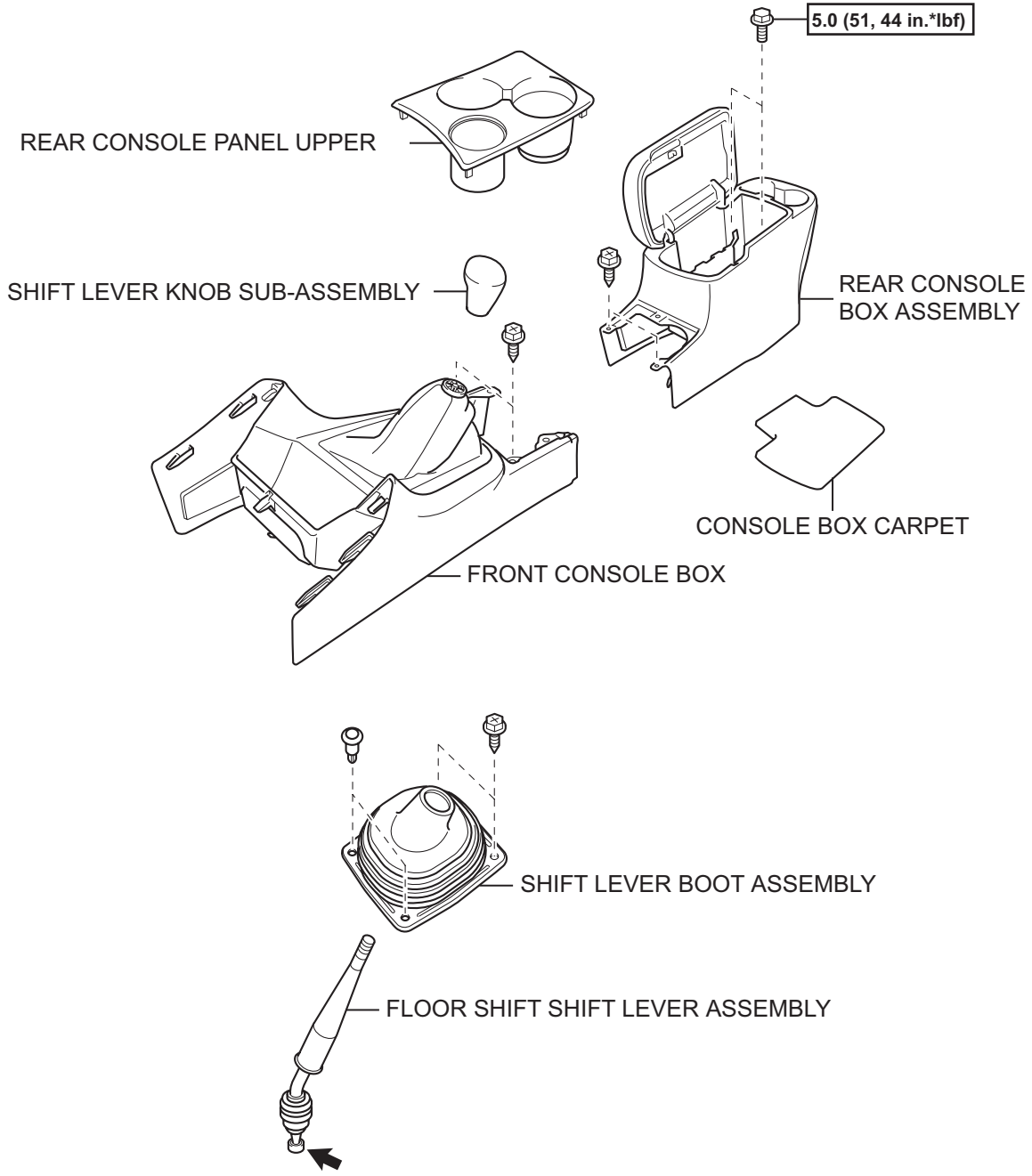
EM

N*m (kgf*cm, ft*lbf) : Specified torque

EM



N*m (kgf*cm, ft*lbf) : Specified torque

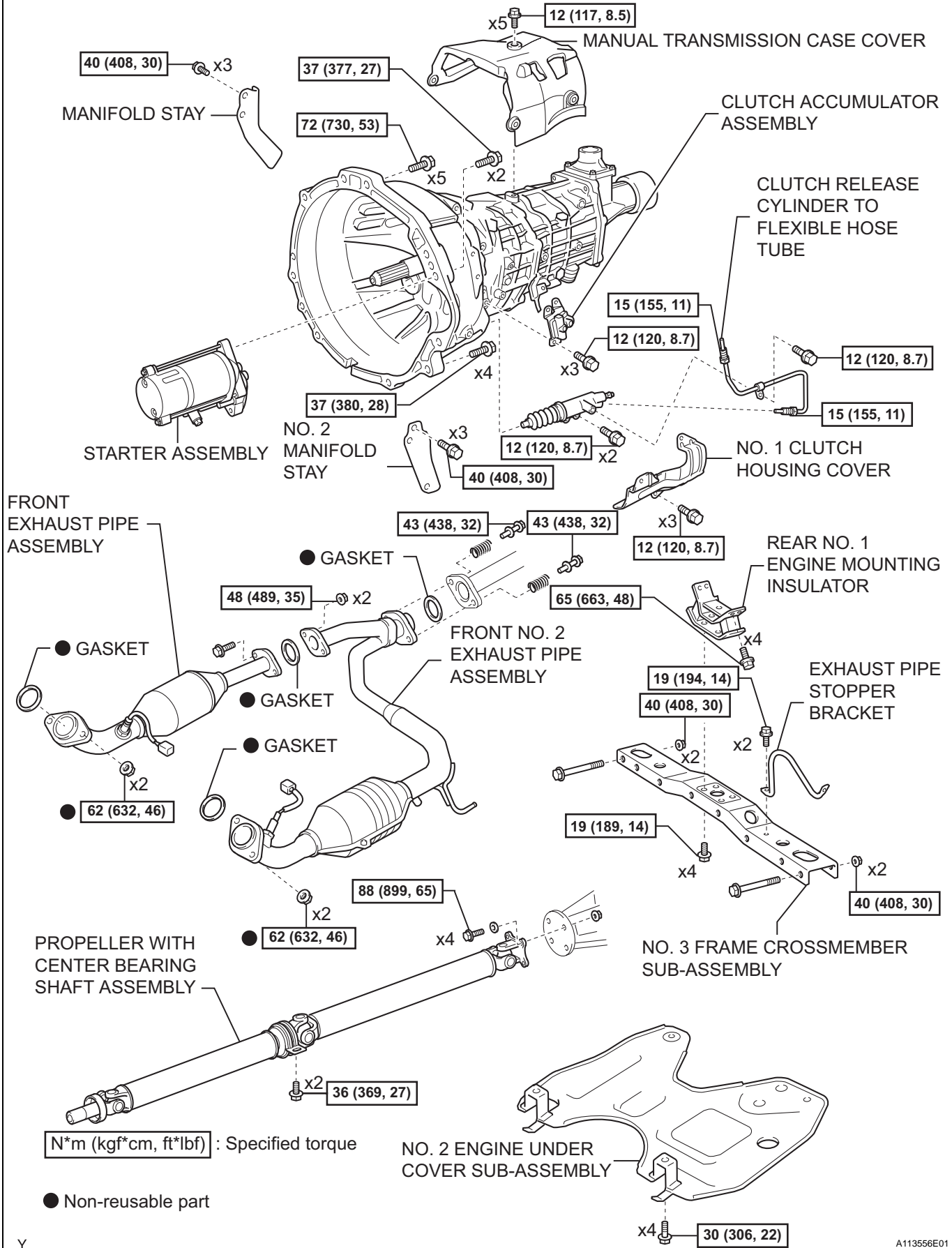


5.0 (51, 44 in.*lbf)
N*m (kgf*cm, ft*lbf) : Specified torque ← MP grease

EM

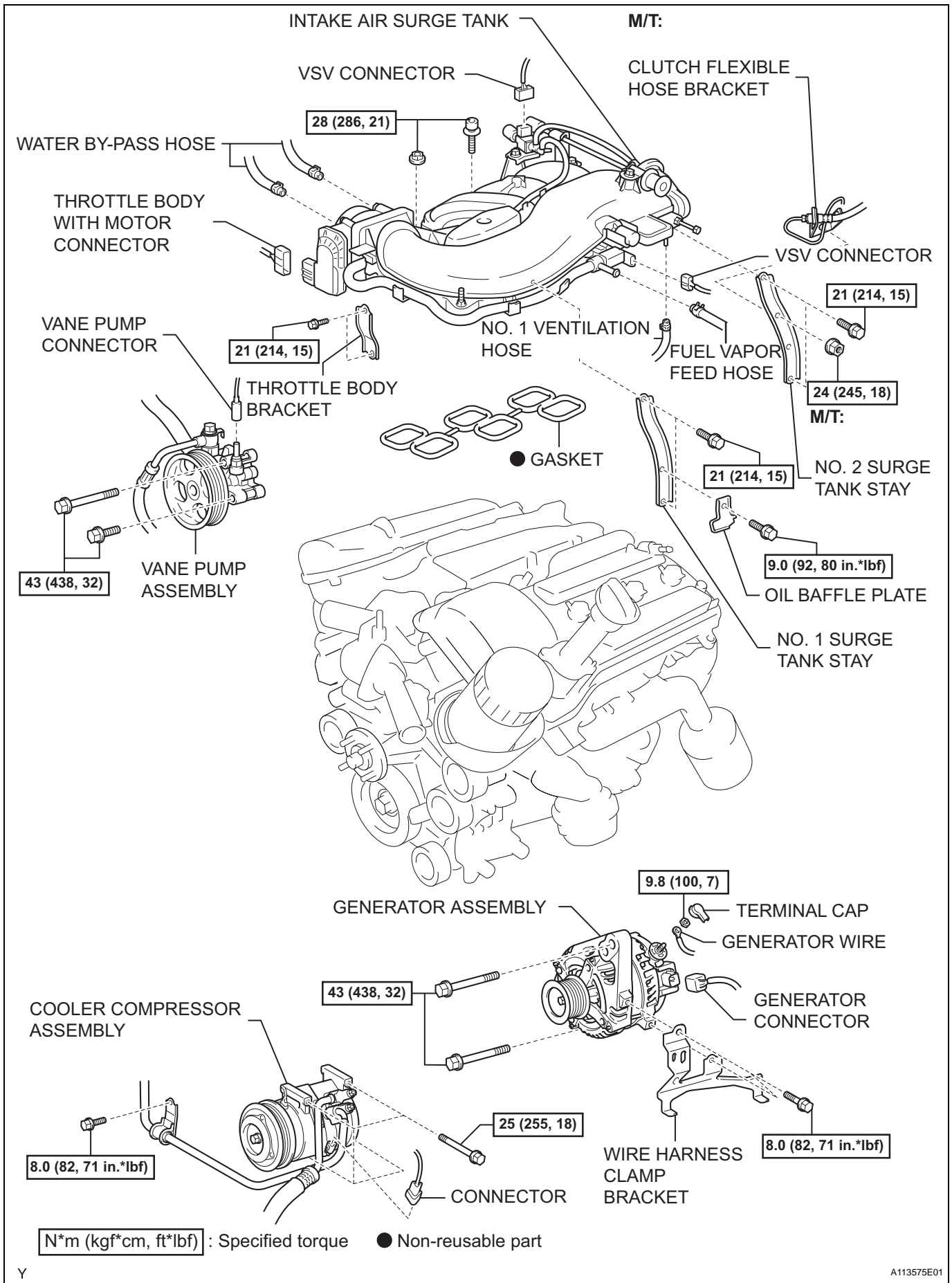
Y

2WD AND PRE RUNNER, MANUAL TRANSMISSION:

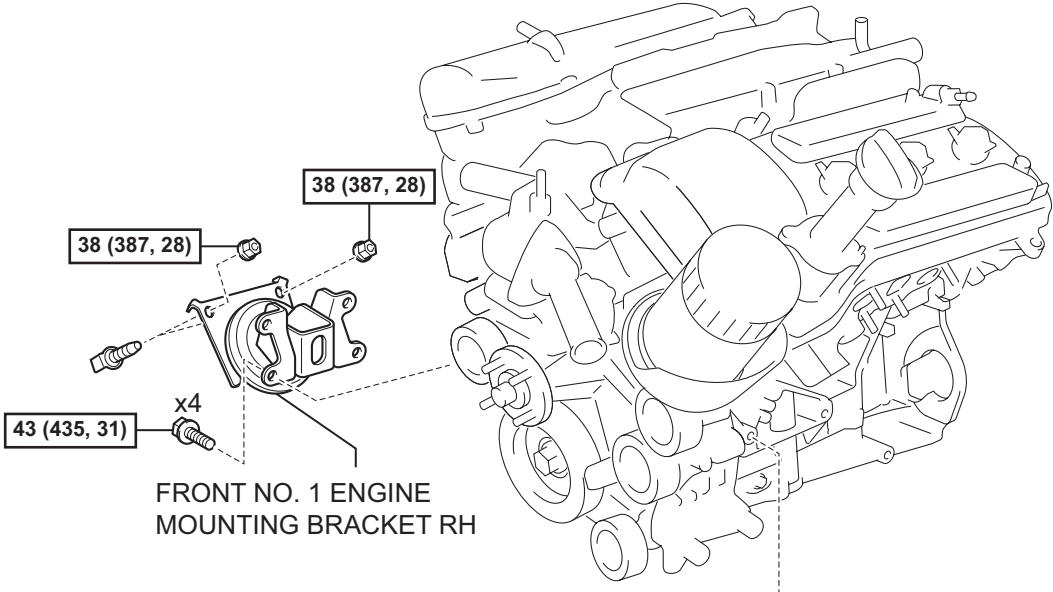


EM

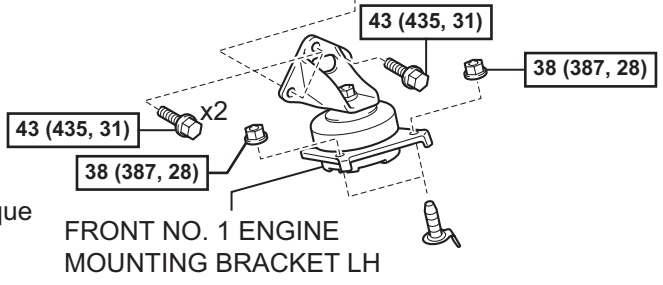
EM



EM



FRONT NO. 1 ENGINE MOUNTING BRACKET RH

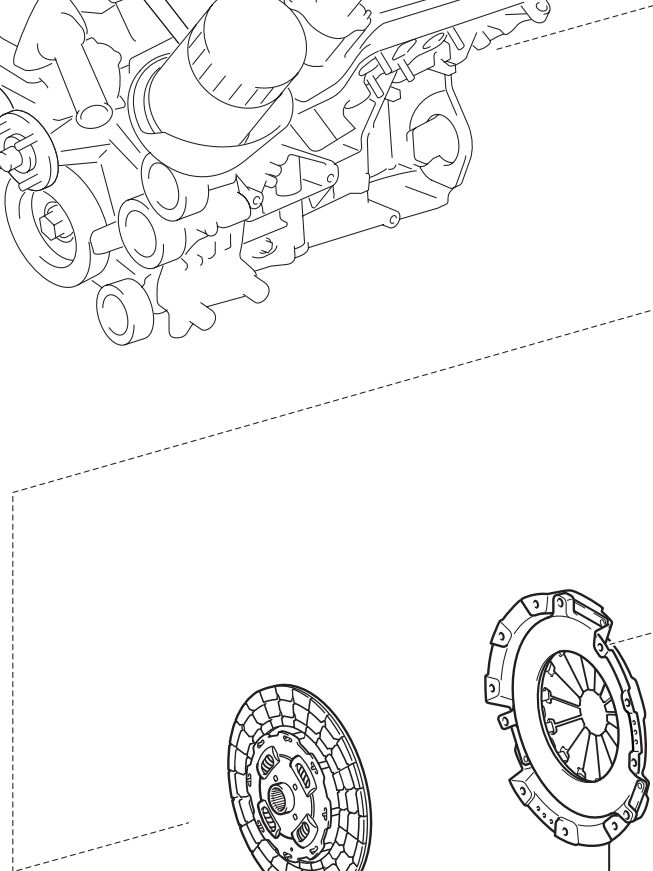
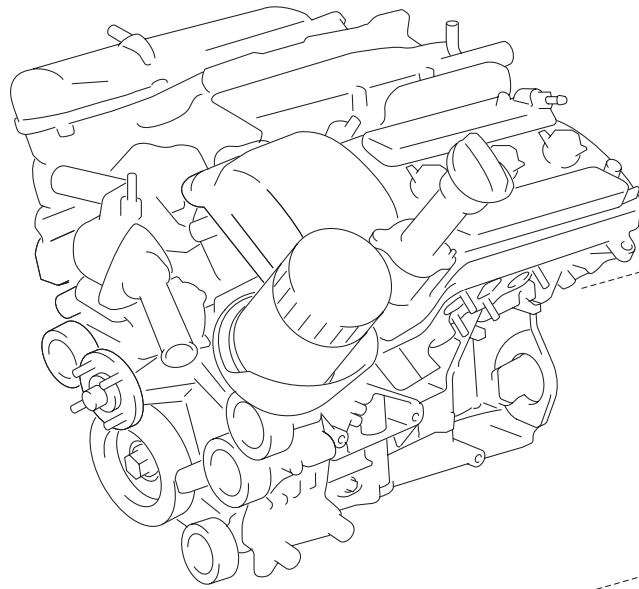


FRONT NO. 1 ENGINE MOUNTING BRACKET LH

N*m (kgf*cm, ft*lbf) : Specified torque

● Non-reusable part

Y



CLUTCH DISK ASSEMBLY

CLUTCH COVER ASSEMBLY

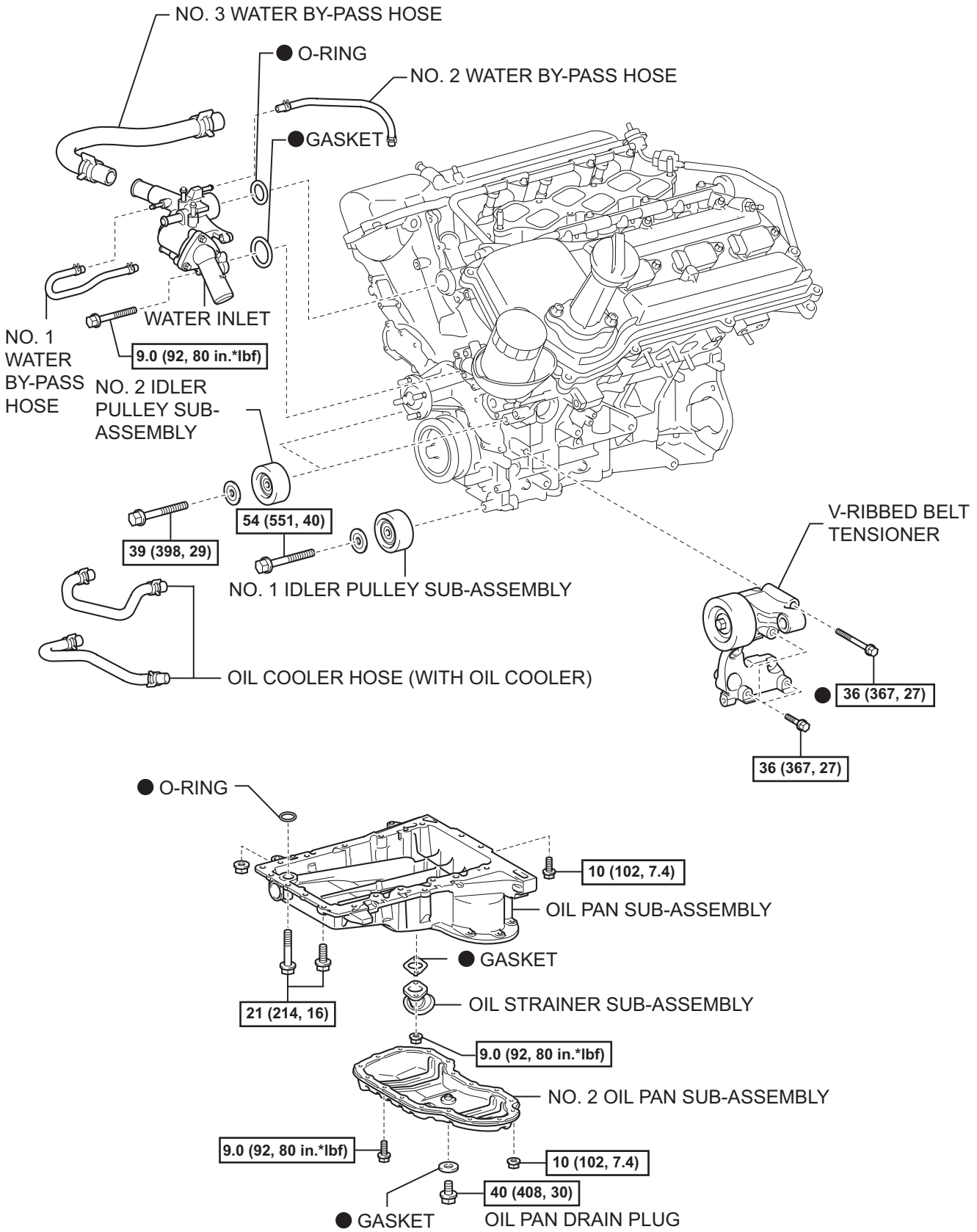
N*m (kgf*cm, ft*lbf) : Specified torque

Y

A113585E01

EM

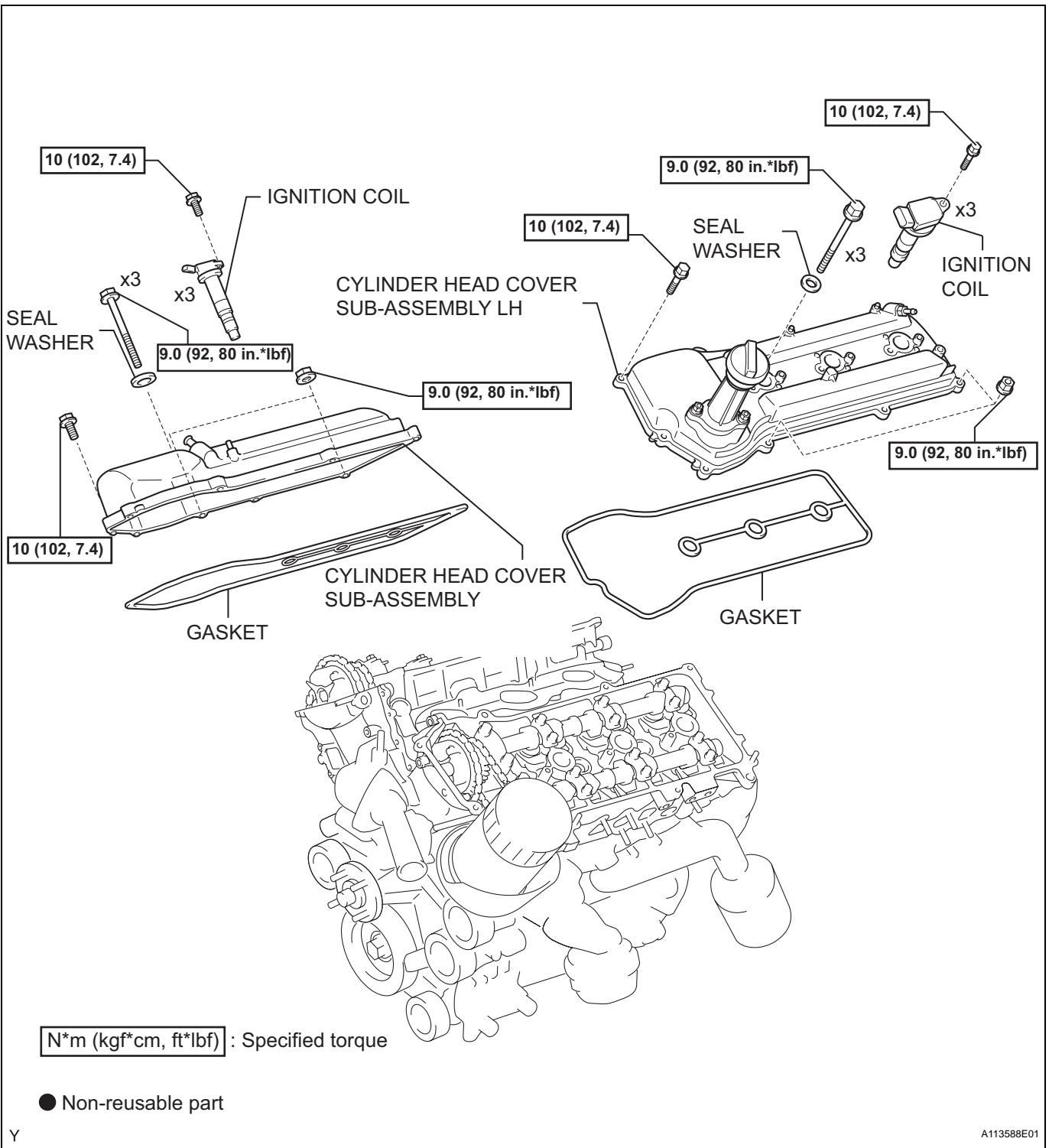
EM



N*m (kgf*cm, ft*lbf) : Specified torque

● Non-reusable part

EM



Y

A113588E01

TIMING CHAIN OR BELT COVER SUB-ASSEMBLY

23 (235, 17) x9

23 (235, 17) x15

x2

23 (235, 17)

CRANKSHAFT PULLEY

250 (2,549, 184)

● TIMING GEAR CASE OR TIMING CHAIN CASE OIL SEAL

NO.2 CHAIN VIBRATION DAMPER

NO. 1 CHAIN TENSIONER ASSEMBLY

10 (102, 7.4)

CHAIN TENSIONER SLIPPER

CHAIN SUB-ASSEMBLY

NO. 1 IDLE GEAR SHAFT

● O-RING

NO. 1 IDLE GEAR

60 (612, 44)

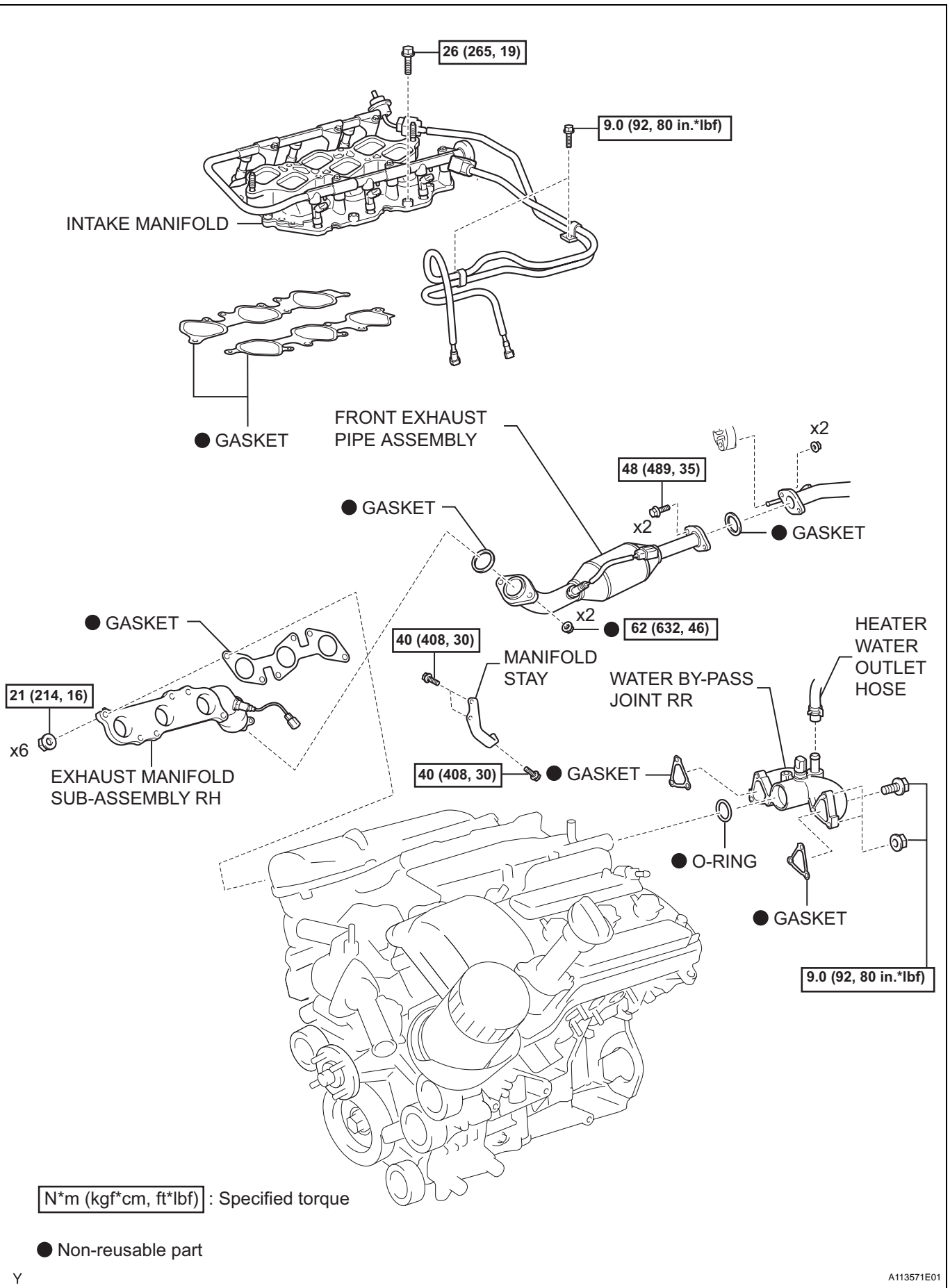
NO.2 IDLE GEAR SHAFT

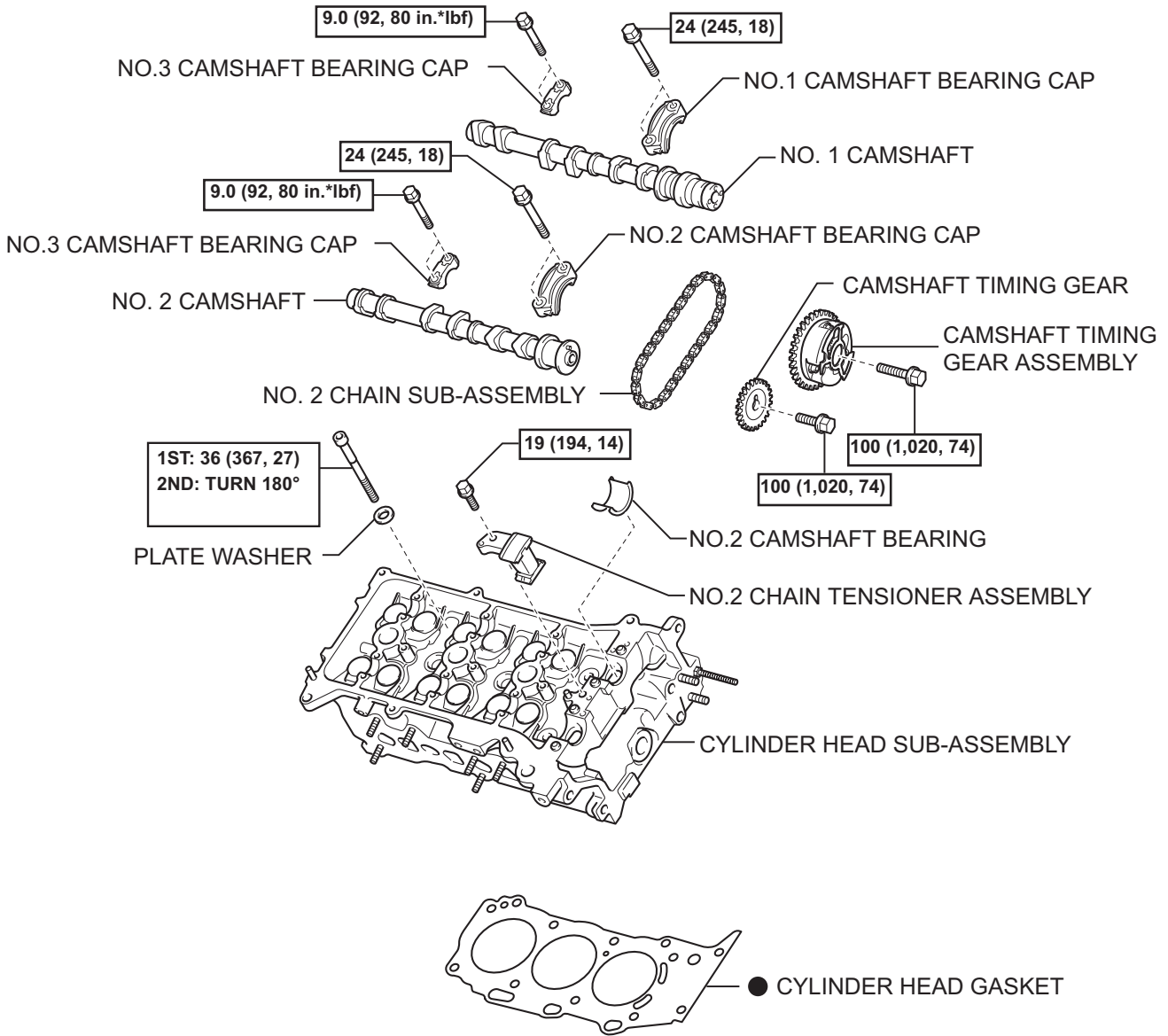
N*m (kgf*cm, ft*lbf) : Specified torque

● Non-reusable part

◀ Apply MP grease

EM





EM

● Non-reusable part

N*m (kgf*cm, ft*lbf) : Specified torque