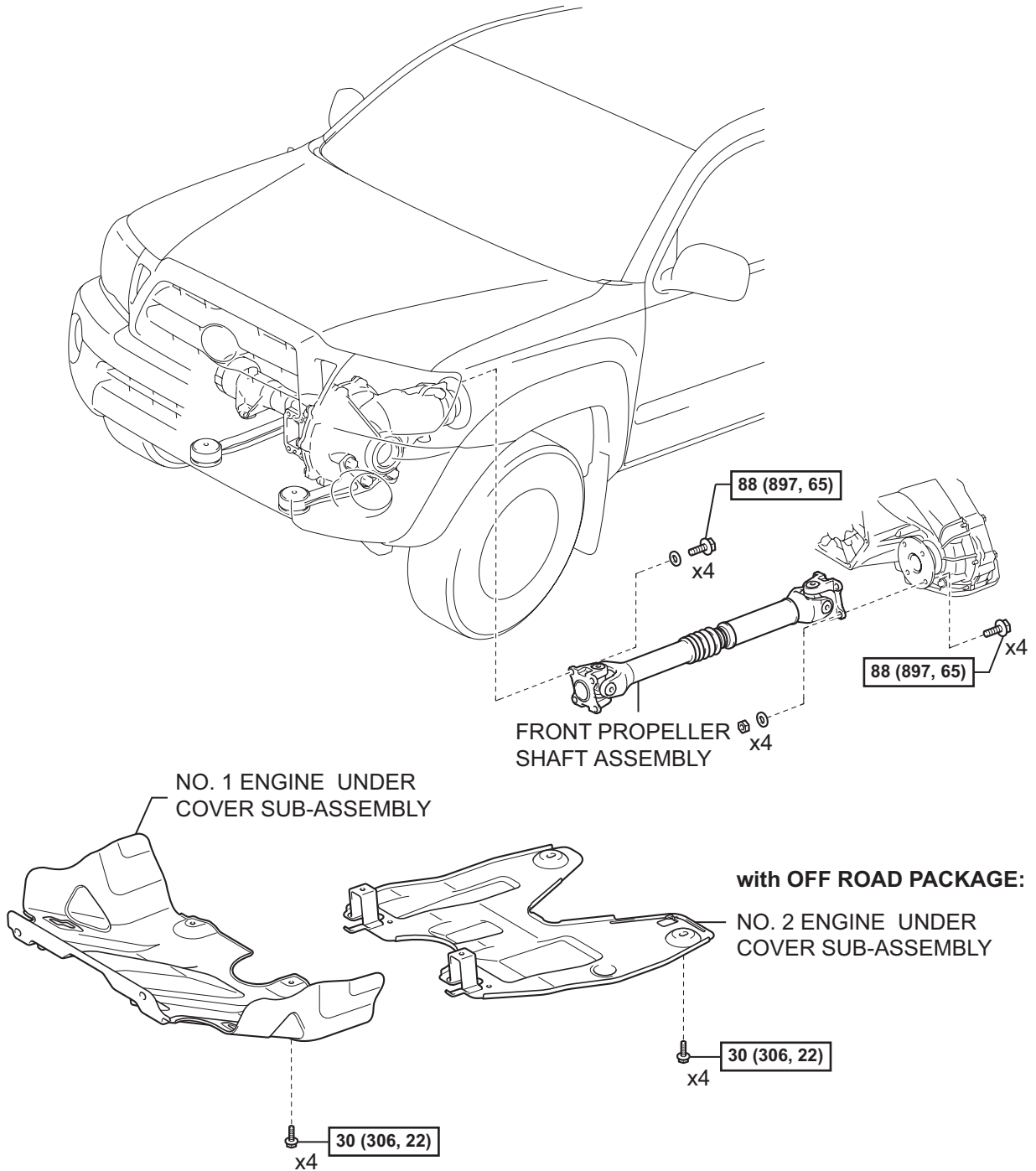


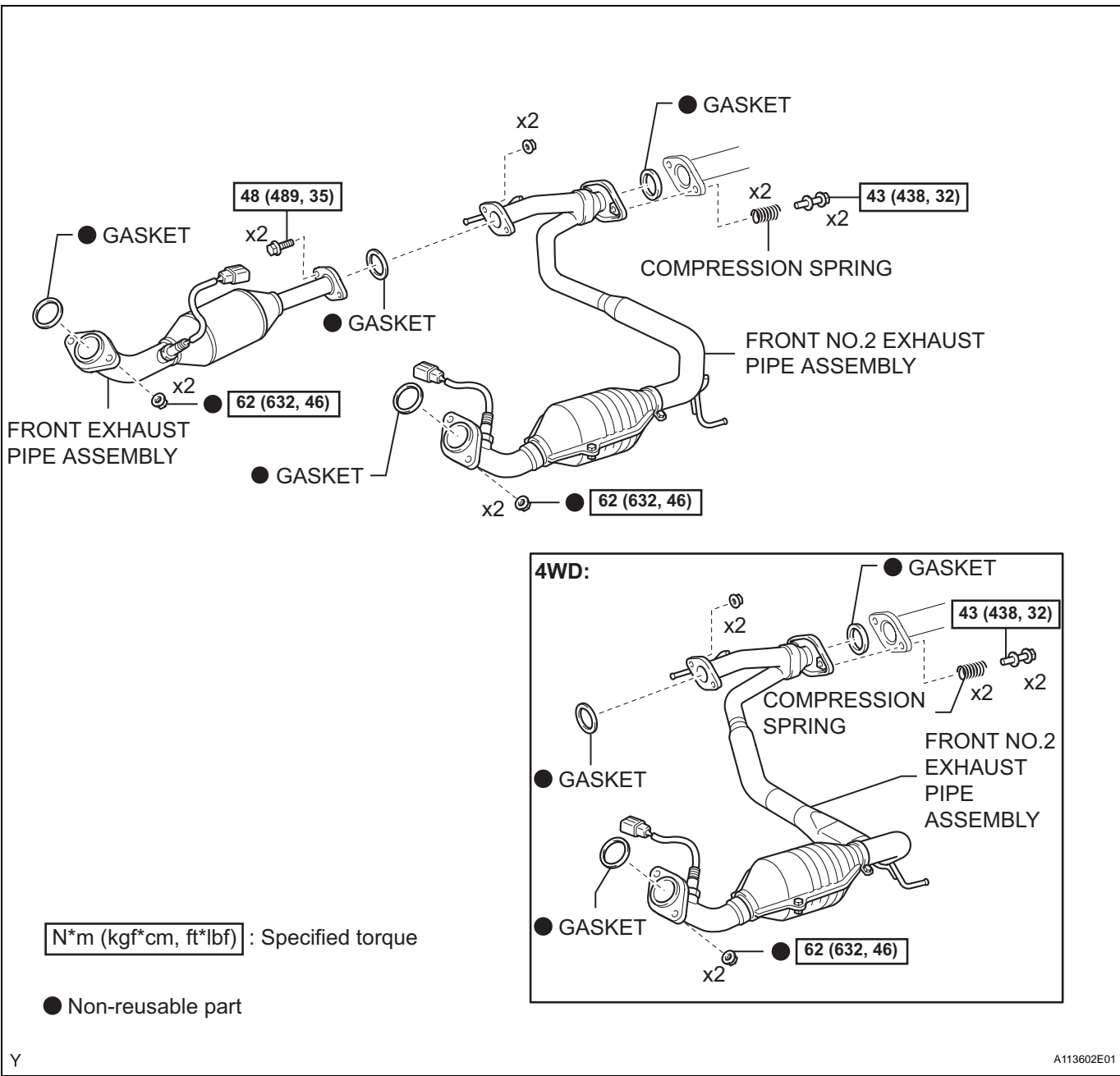
CYLINDER HEAD (for Bank 2 4WD and Pre-Runner)

COMPONENTS

EM



N*m (kgf*cm, ft*lbf) : Specified torque



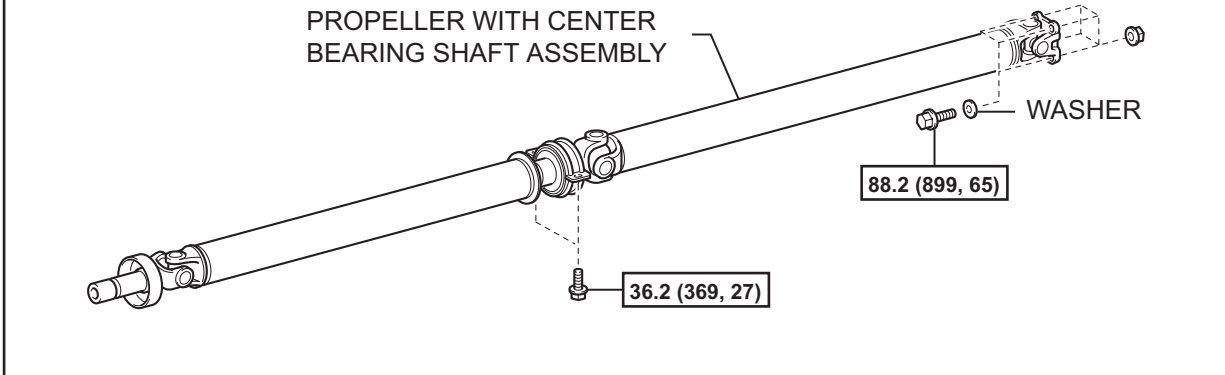
N*m (kgf*cm, ft*lbf) : Specified torque

● Non-reusable part

Y

A113602E01

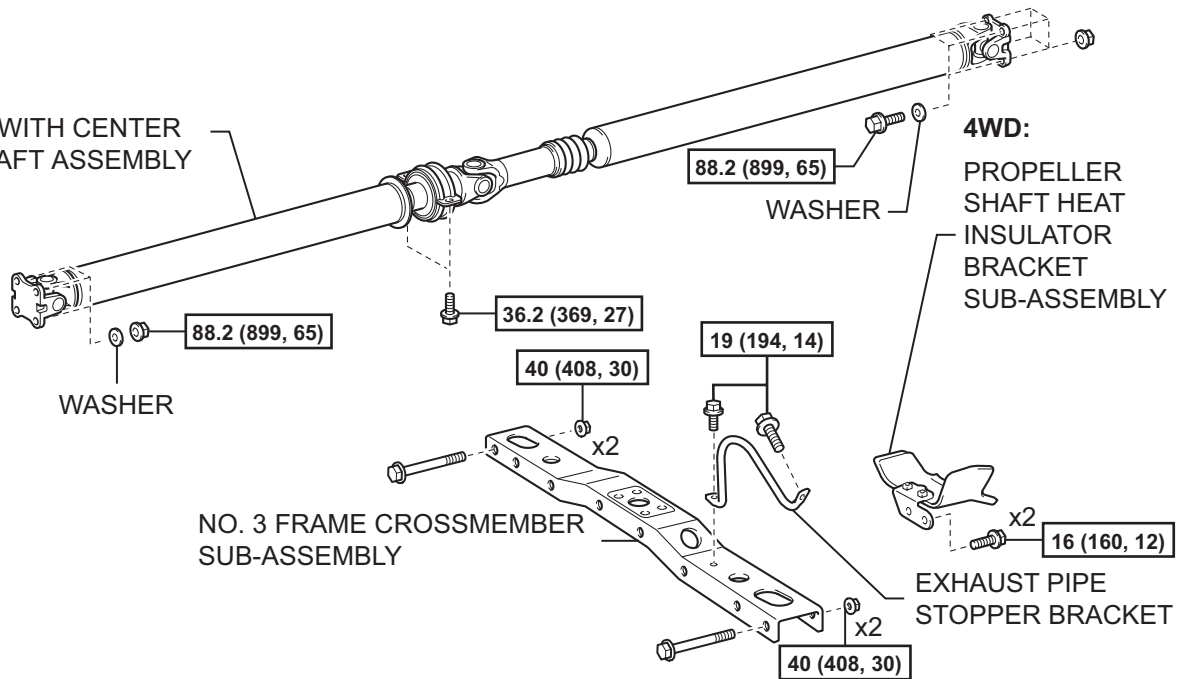
PRE RUNNER:



EM

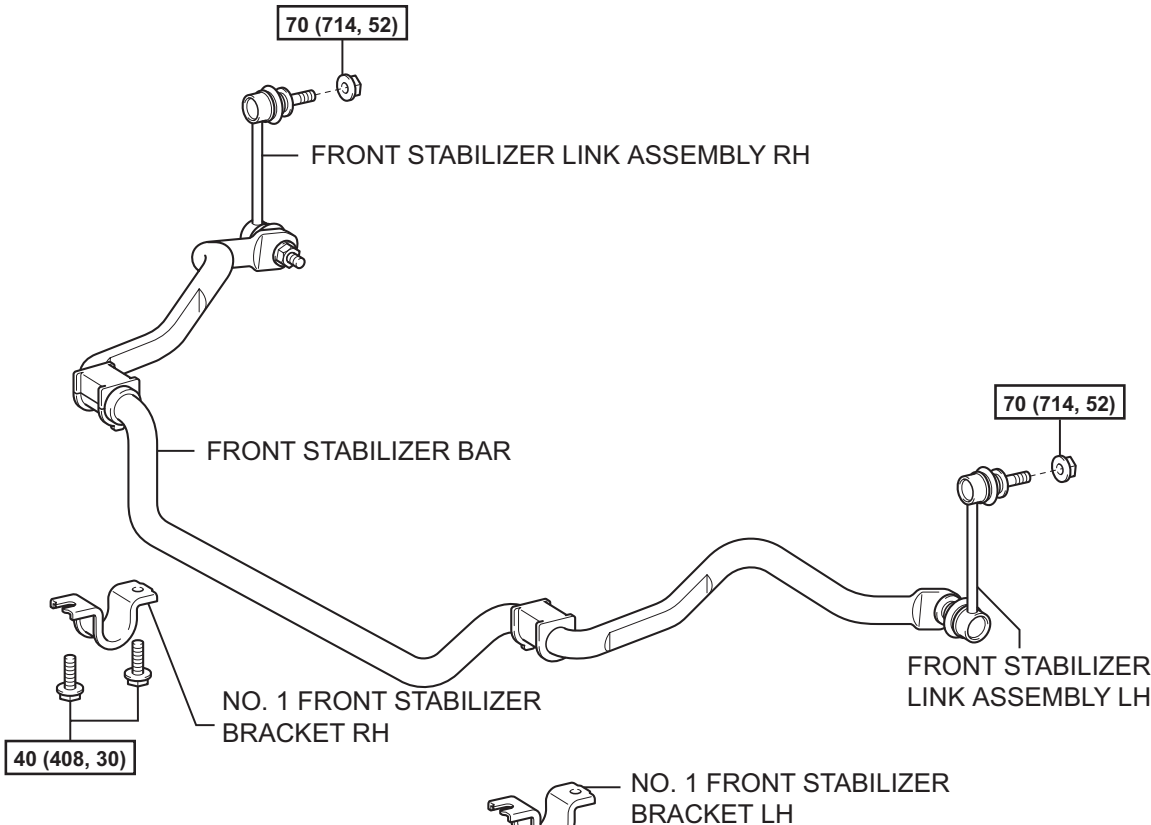
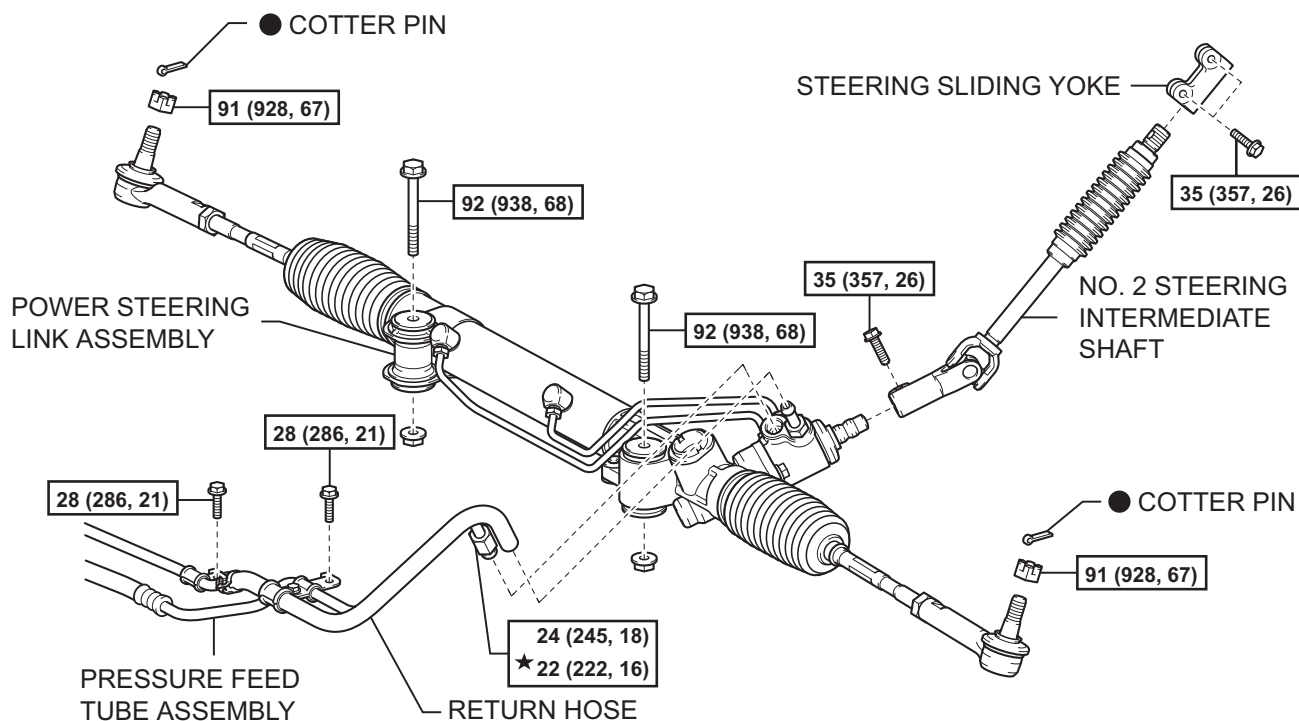
4WD:

PROPELLER WITH CENTER BEARING SHAFT ASSEMBLY



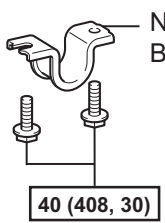
N*m (kgf*cm, ft*lb) : Specified torque

Y



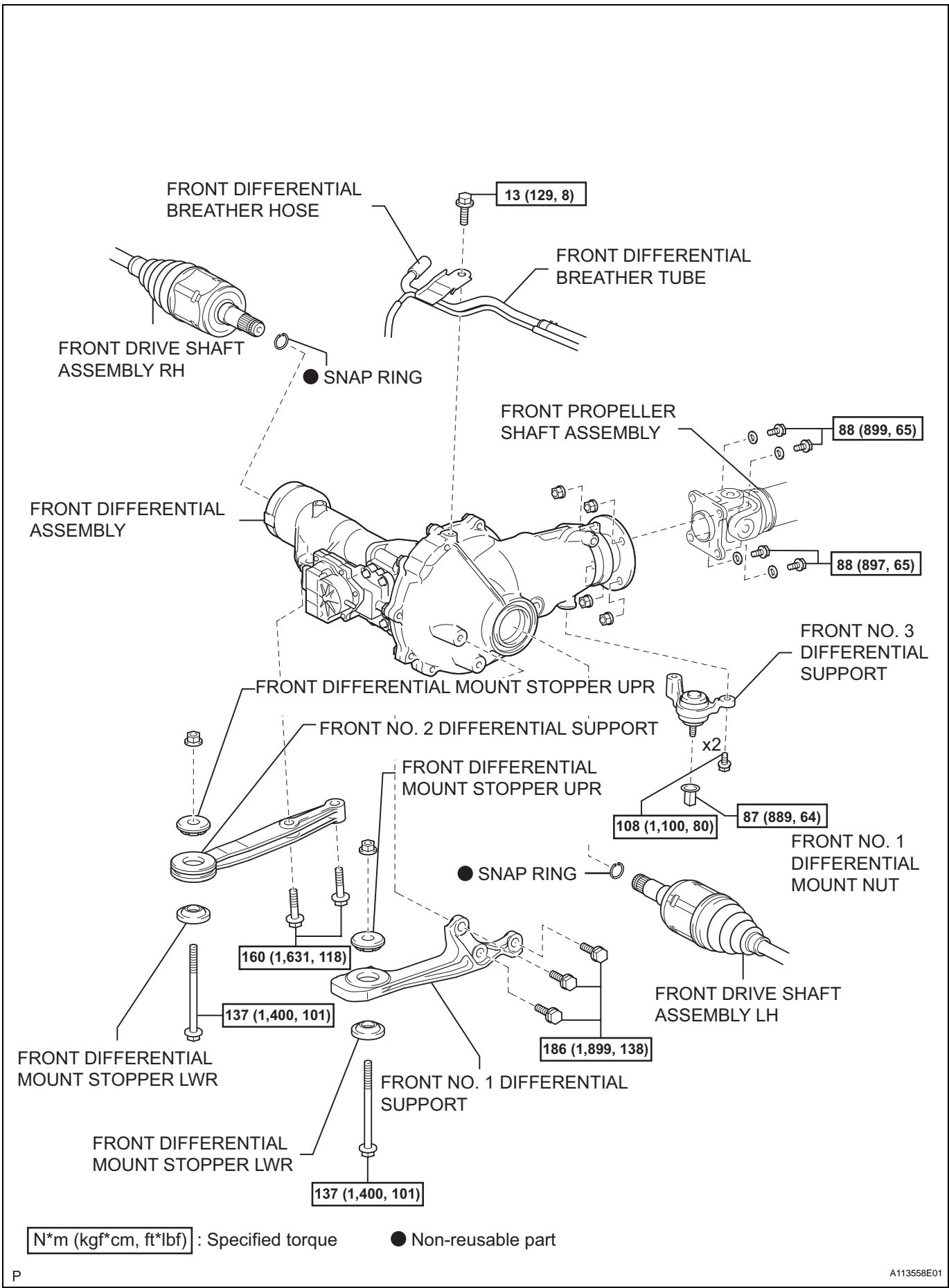
N*m (kgf*cm, ft*lbf) : Specified torque

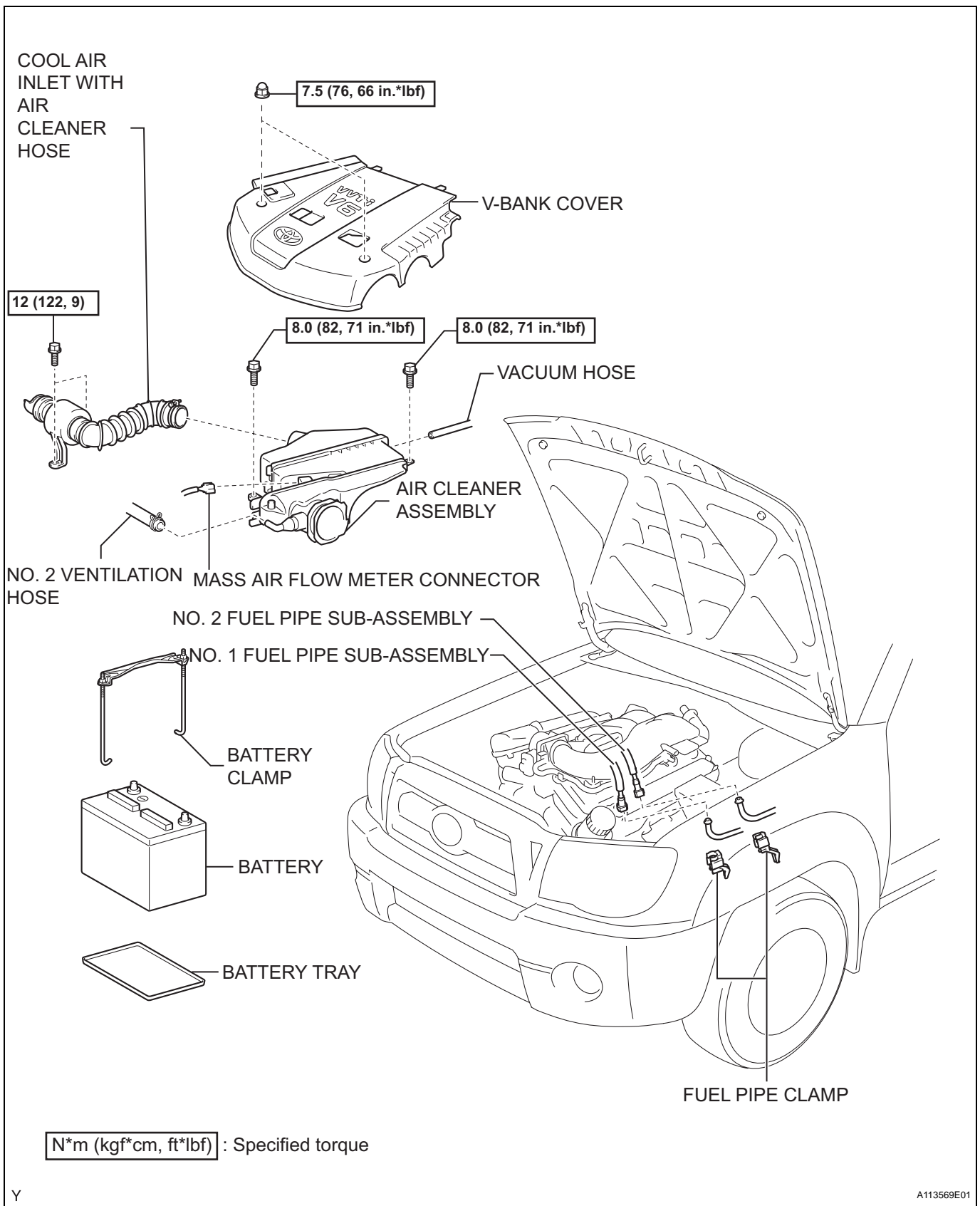
● Non-reusable part ★ For use with SST



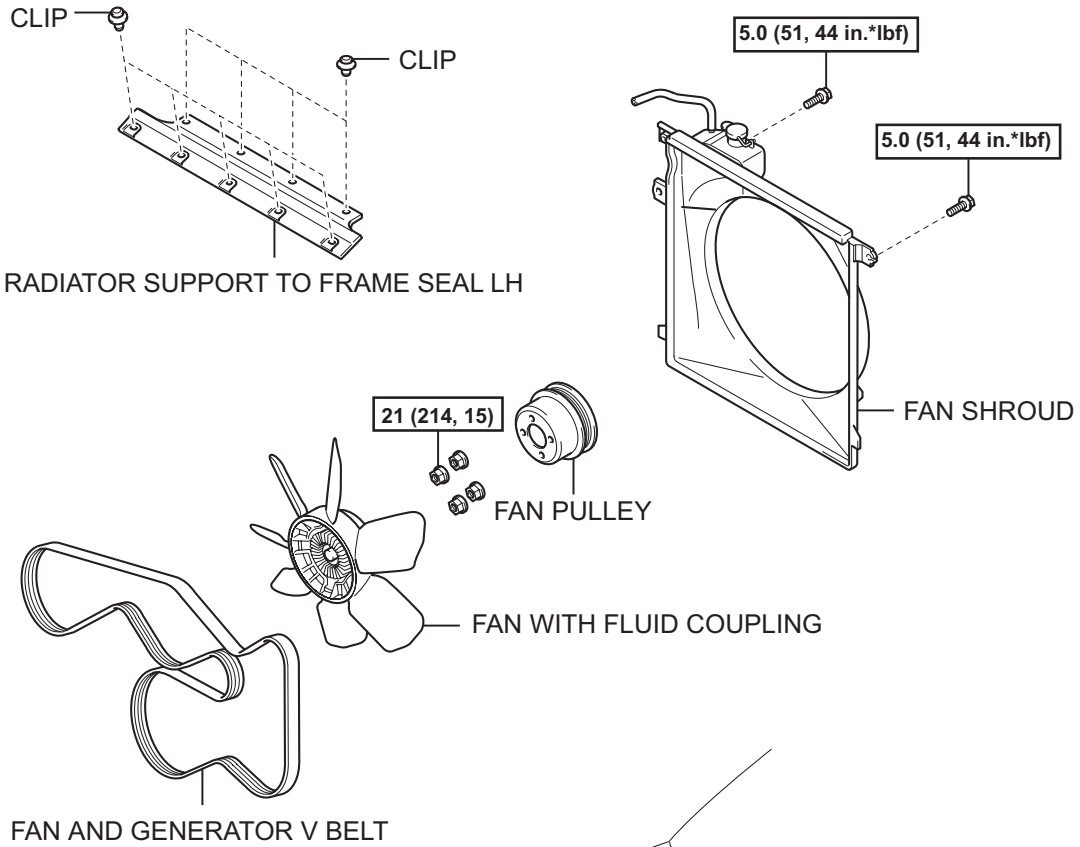
EM

EM





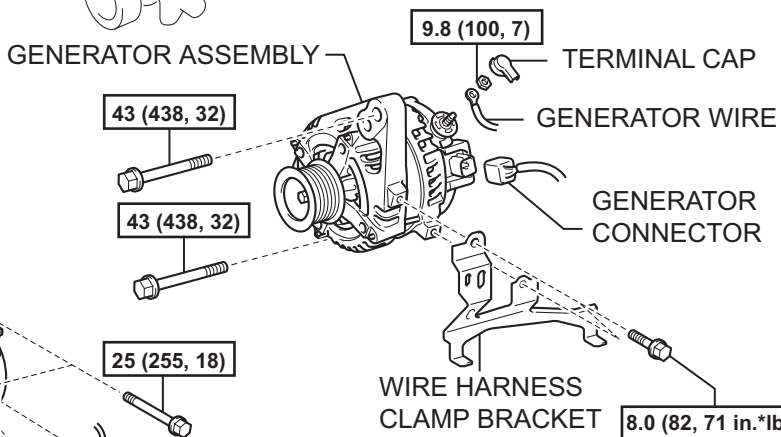
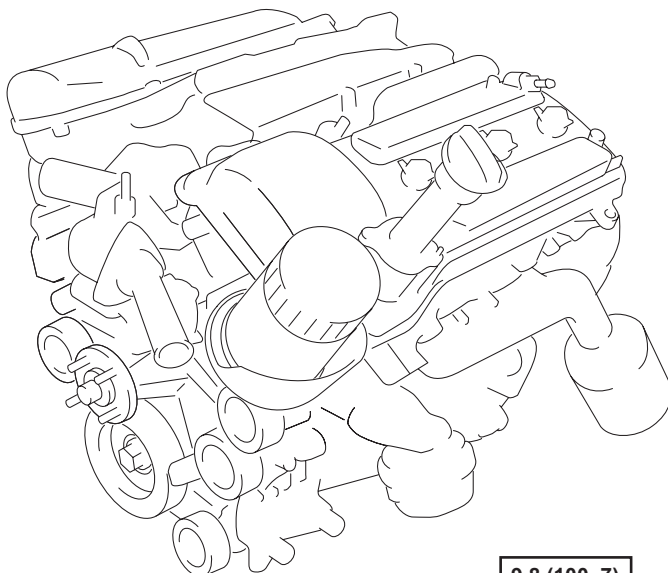
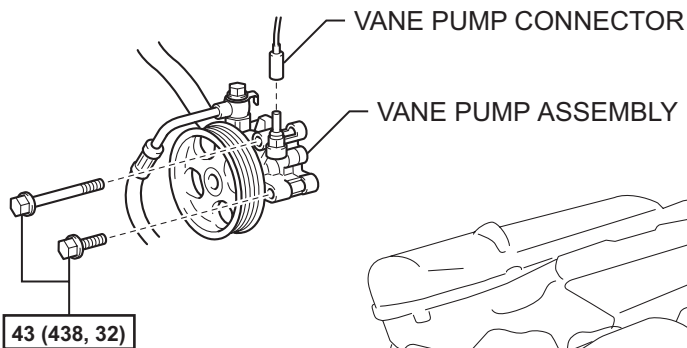
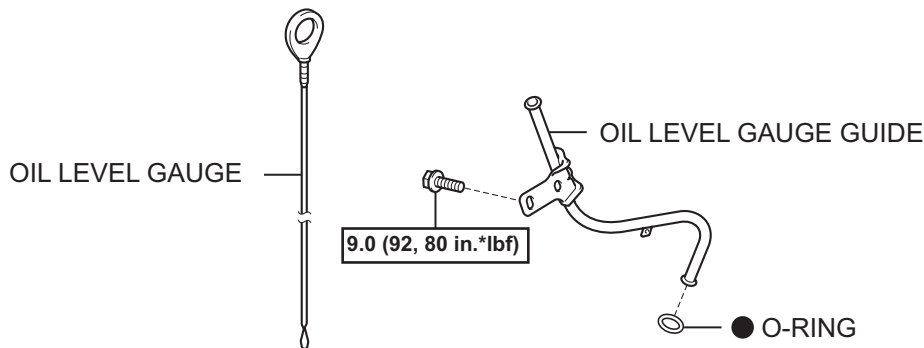
EM



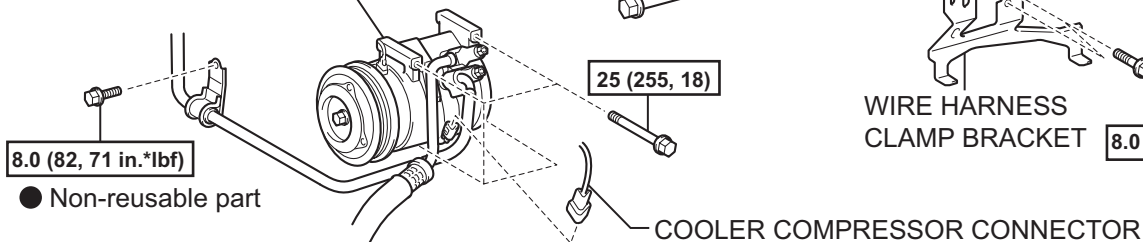
EM

N*m (kgf*cm, ft*lbf) : Specified torque

EM

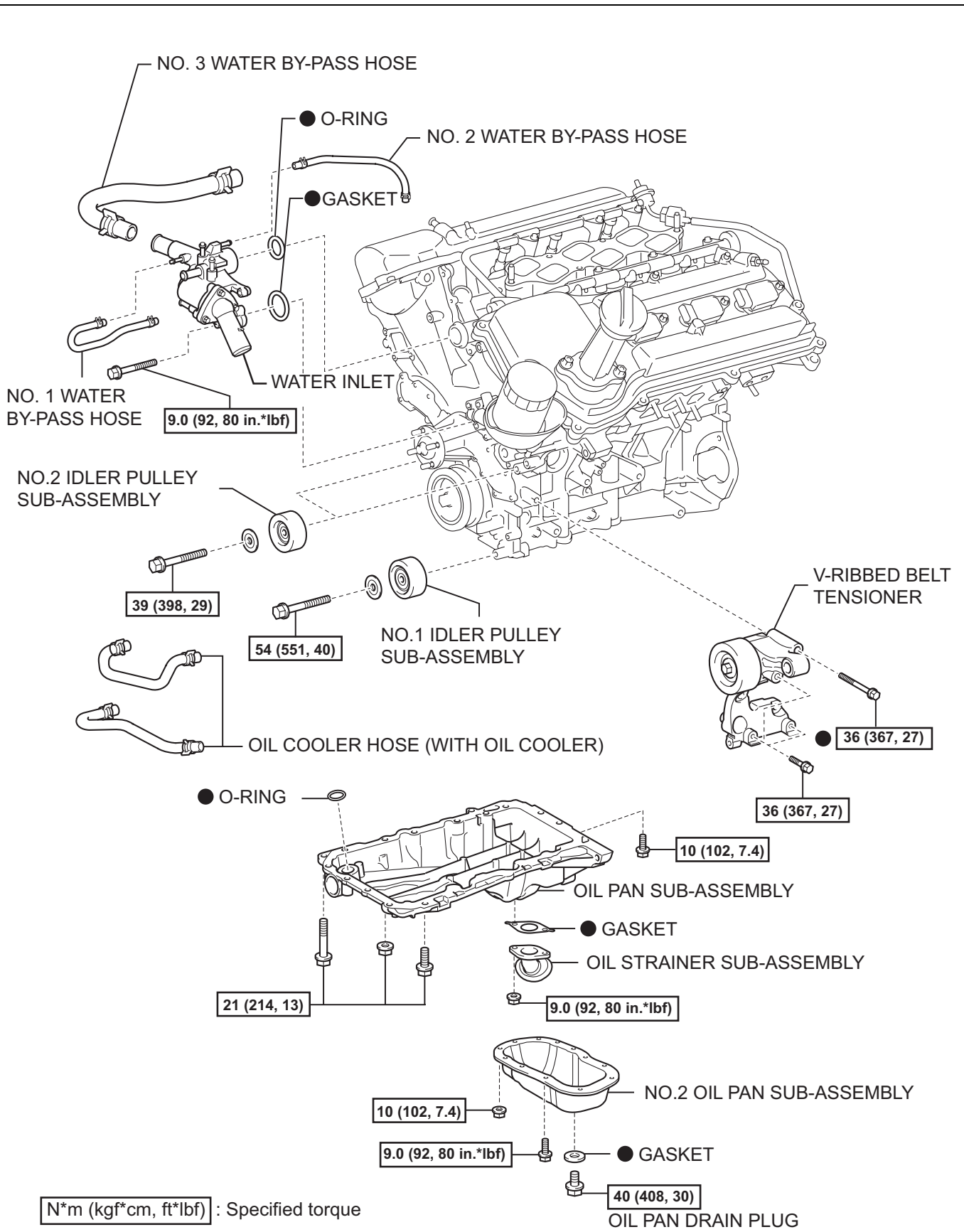


COOLER COMPRESSOR ASSEMBLY



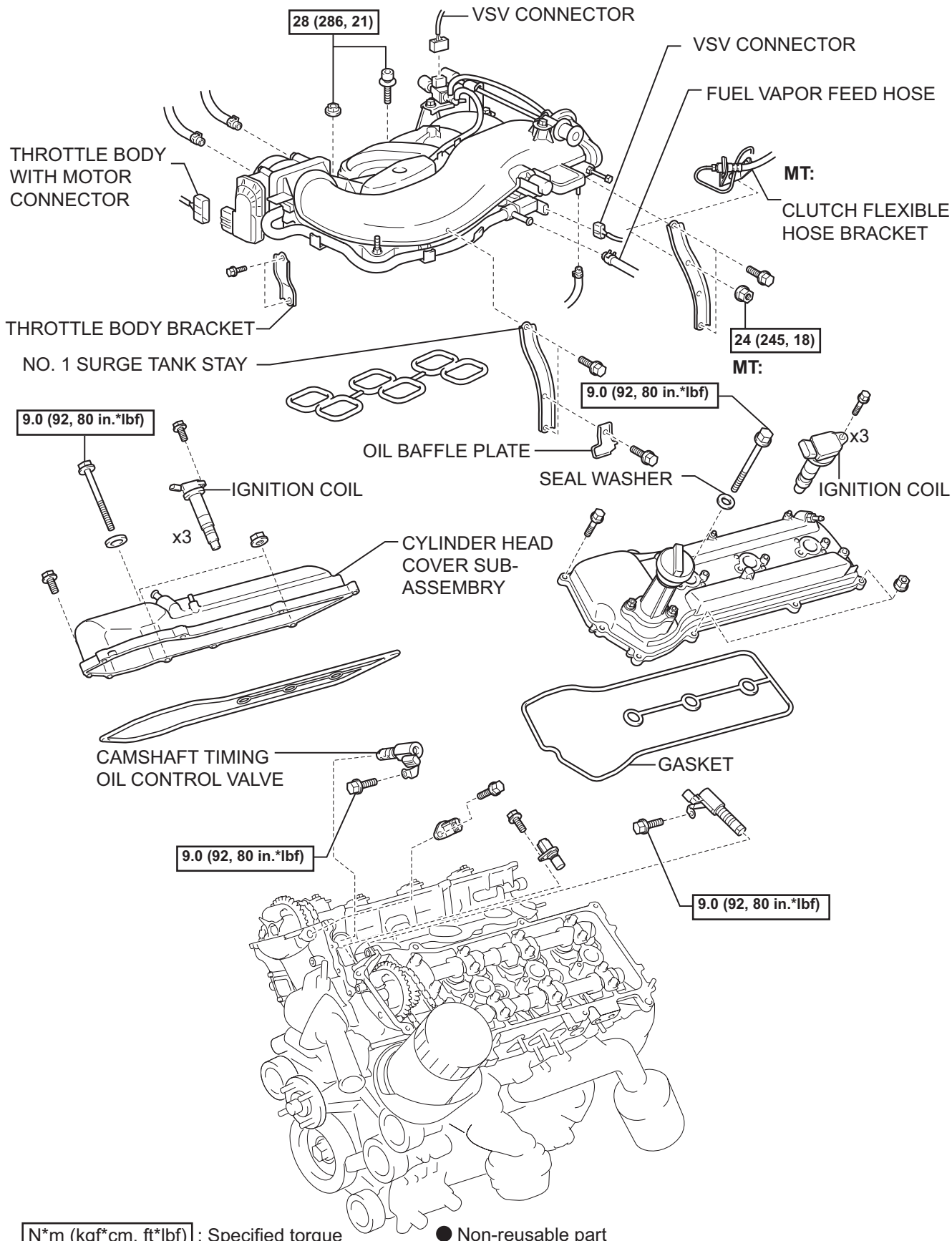
N*m (kgf*cm, ft*lbf) : Specified torque

EM

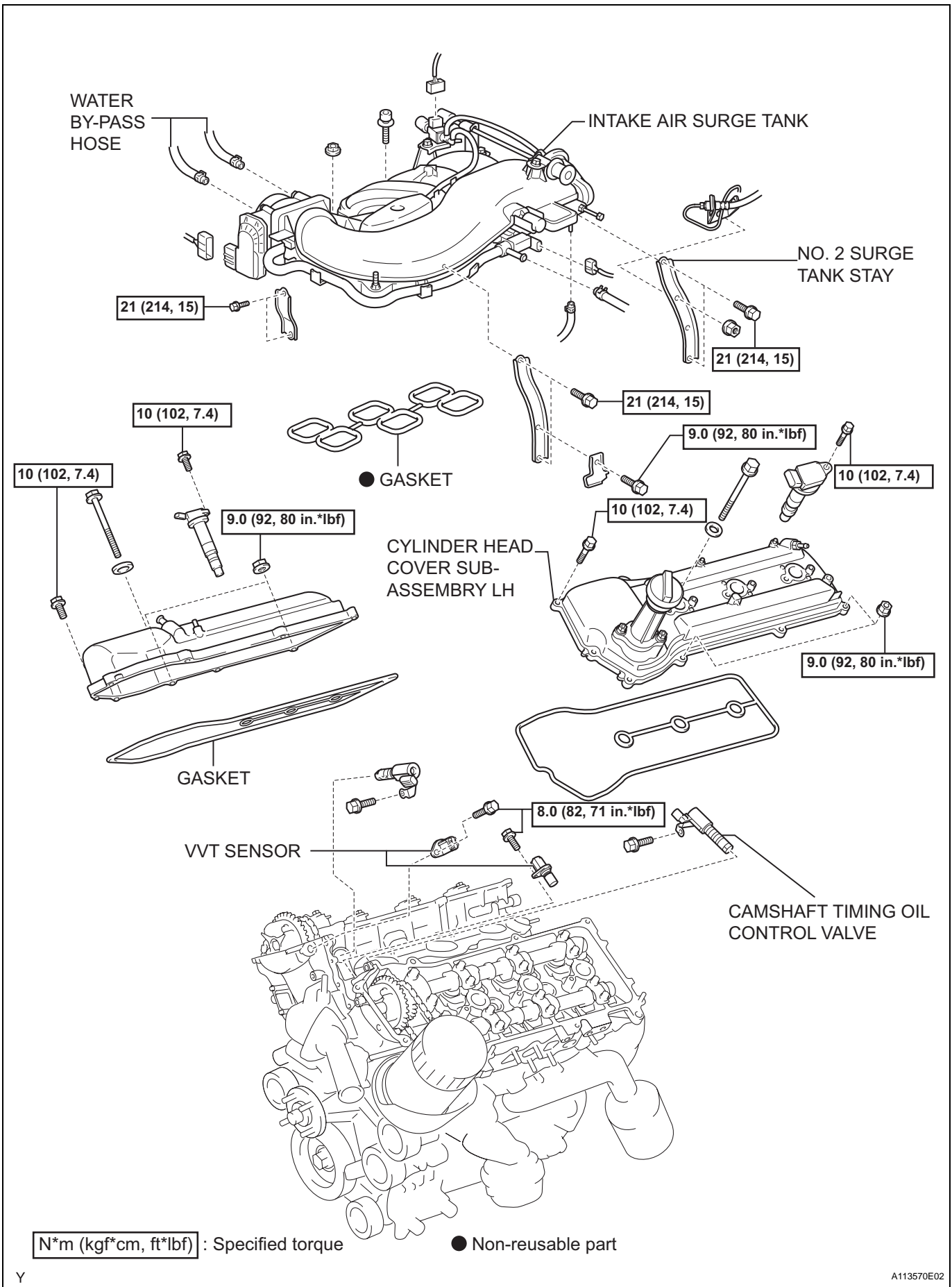


N*m (kgf*cm, ft*lbf) : Specified torque

● Non-reusable part



EM



TIMING CHAIN OR BELT COVER SUB-ASSEMBLY

23 (235, 17) x9

23 (235, 17) x15

x2

23 (235, 17)

CRANKSHAFT PULLEY

250 (2,549, 184)

● TIMING GEAR CASE OR TIMING CHAIN CASE OIL SEAL

NO.2 CHAIN VIBRATION DAMPER

NO. 1 CHAIN TENSIONER ASSEMBLY

10 (102, 7.4)

CHAIN TENSIONER SLIPPER

CHAIN SUB-ASSEMBLY

NO. 1 IDLE GEAR SHAFT

● O-RING

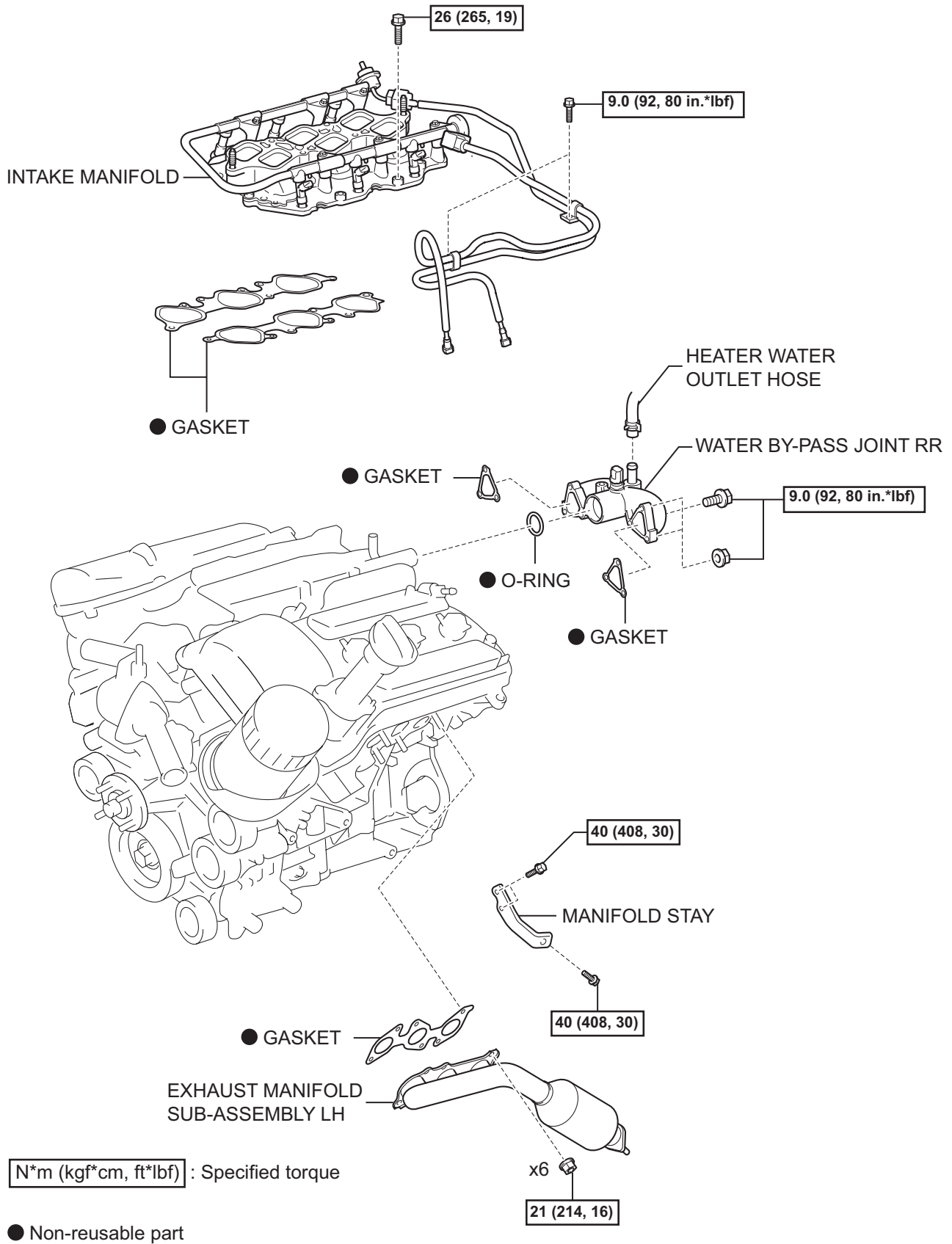
NO. 1 IDLE GEAR

60 (612, 44)

NO.2 IDLE GEAR SHAFT

N*m (kgf*cm, ft*lbft) : Specified torque ● Non-reusable part ◀ Apply MP grease

EM



EM

