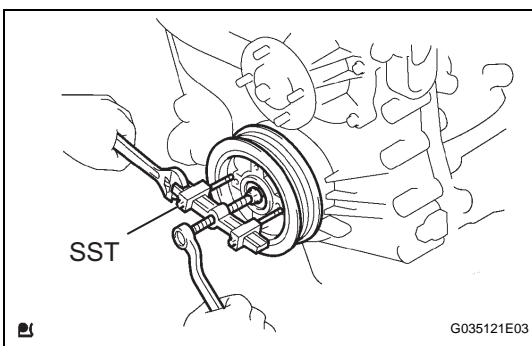
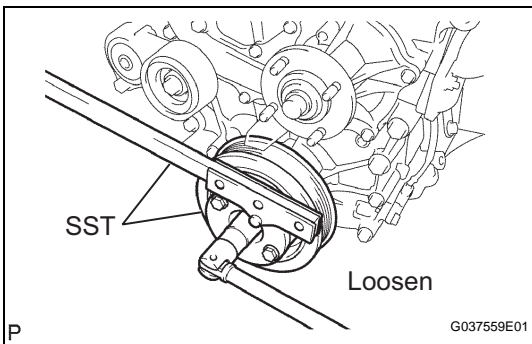
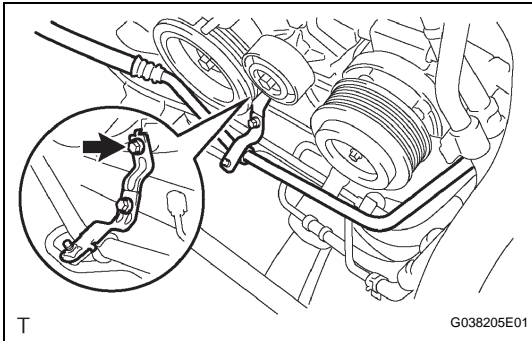


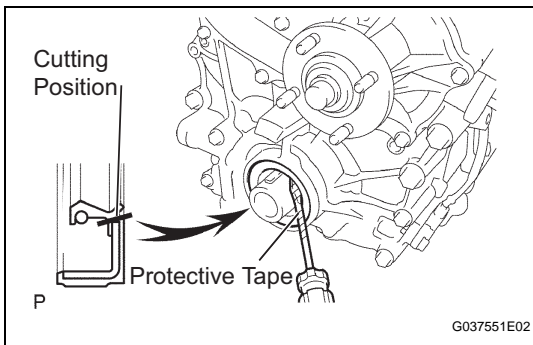
ENGINE FRONT OIL SEAL

REMOVAL

1. **REMOVE ENGINE UNDER COVER SUB-ASSEMBLY NO.1 (for Pre Runner and 4WD Type)**
 - (a) Remove the 4 bolts, then remove the No. 1 engine under cover.
2. **DRAIN ENGINE COOLANT (See page CO-3)**
3. **REMOVE RADIATOR SUPPORT TO FRAME SEAL LH (See page CO-12)**
4. **REMOVE FAN SHROUD (See page CO-13)**
5. **REMOVE CRANKSHAFT PULLEY**
 - (a) Remove the bolt, then separate the bracket. (w/ AIR CONDITIONING)



- (b) Using SST, loosen the crankshaft pulley bolt.
SST 09213-54015 (91651-60855), 09330-00021
HINT:
 Loosen the crankshaft pulley bolt until only 2 or 3 threads are still installed in the crankshaft.
- (c) Using SST, remove the crankshaft pulley and crankshaft pulley bolt.
SST 09950-50013 (09951-05010, 09952-05010, 09953-05010, 09954-05021)



6. REMOVE TIMING GEAR CASE OR TIMING CHAIN CASE OIL SEAL

- Using a cutter knife, cut off the lip of the oil seal.
- Using a screwdriver with its tip wrapped in tape, pry out the oil seal and remove it.

NOTICE:

Check the crankshaft for damage after removing the oil seal. If damaged, smooth the surface with 400-grit sandpaper.

INSTALLATION

1. INSTALL TIMING GEAR CASE OR TIMING CHAIN CASE OIL SEAL

- Apply a light coat of MP grease to the lip of a new oil seal.

NOTICE:

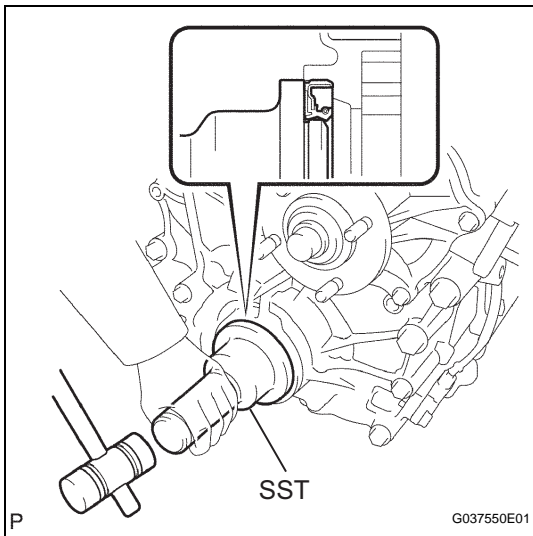
Keep the lip free of foreign objects.

- Using SST, uniformly tap a new oil seal in until its surface is flush with the timing chain cover edge.

SST 09223-50010

NOTICE:

- Do not tap the oil seal in at an angle.
- Wipe any extra grease off the crankshaft.



2. INSTALL CRANKSHAFT PULLEY

- Align the set key of the crankshaft with the key groove of the pulley, and slide on the pulley.
- Provisionally install a new crankshaft pulley bolt onto the crankshaft.
- Using SST, hold the crankshaft pulley and tighten the crankshaft pulley bolt.

SST 09213-54015 (91651-60855), 09330-00021

Torque: 260 N*m (2,651 kgf*cm, 192 ft.*lbf)

NOTICE:

Do not reuse the pulley bolt.

- Install the bracket with the bolt. (w/ AIR CONDITIONING)

Torque: 7.5 N*m (76 kgf*cm, 66 in.*lbf)

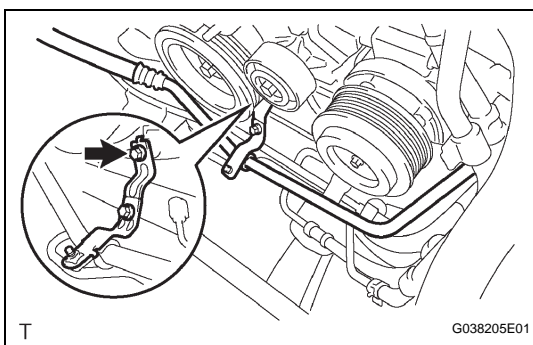
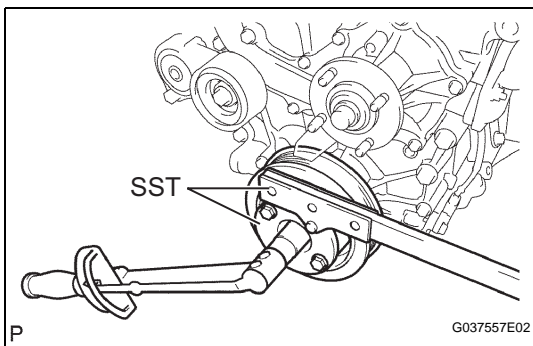
3. INSTALL FAN SHROUD (See page [CO-18](#))

4. INSTALL RADIATOR SUPPORT TO FRAME SEAL LH (See page [CO-19](#))

5. ADD ENGINE COOLANT (See page [CO-3](#))

6. CHECK FOR ENGINE COOLANT LEAKAGE (See page [CO-2](#))

7. CHECK FOR ENGINE OIL LEAKAGE



8. INSTALL NO. 1 ENGINE UNDER COVER SUB-ASSEMBLY (for Pre Runner and 4WD Type)

- (a) Install the No. 1 engine under cover with the 4 bolts.
Torque: 30 N*m (306 kgf*cm, 22 ft.*lbf)