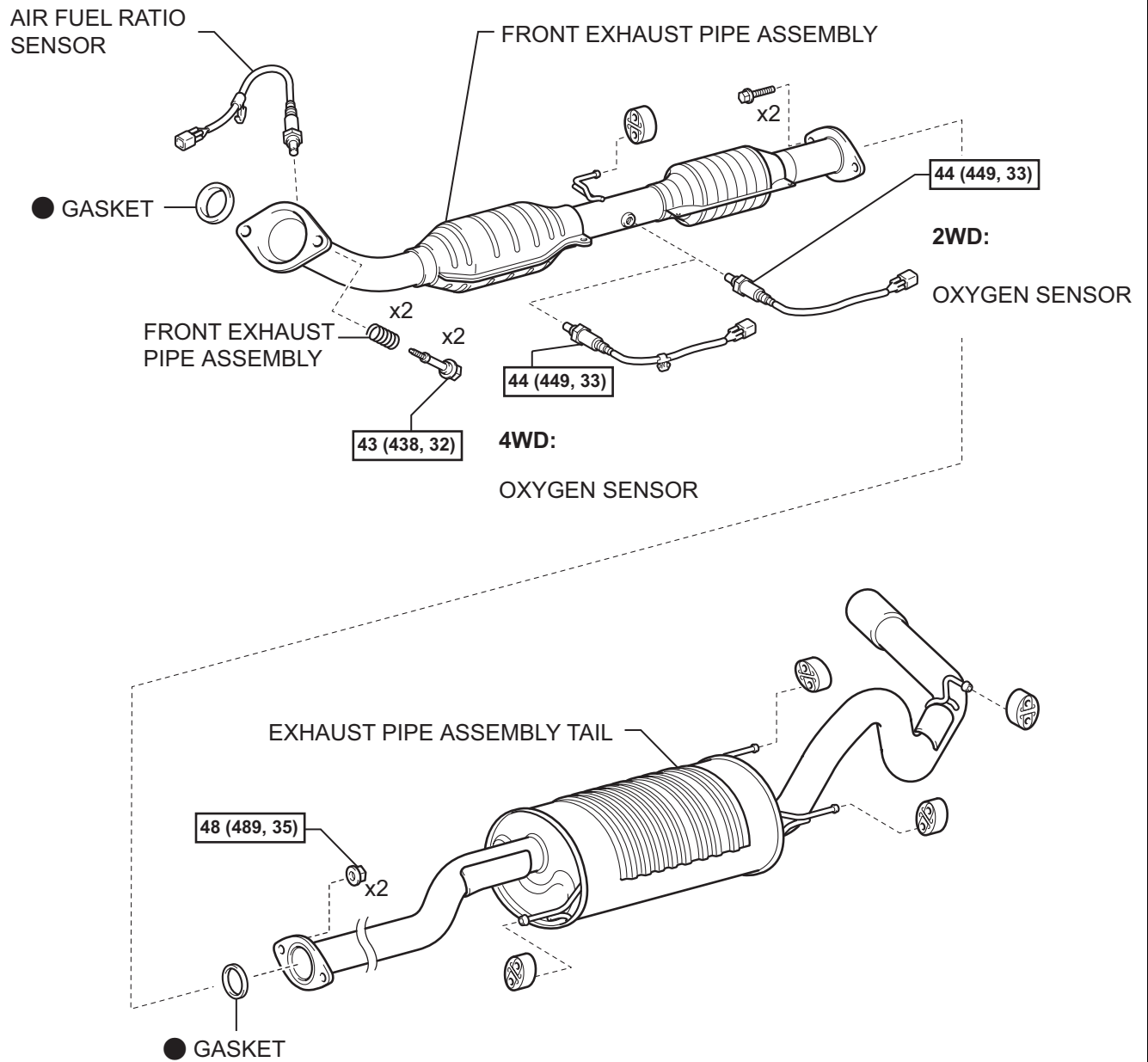


EXHAUST PIPE COMPONENTS



N*m (kgf*cm, ft.*lbf) : Specified torque

● Non-reusable part

REMOVAL

1. **CABLE FROM NEGATIVE BATTERY TERMINAL**
2. **REMOVE AIR FUEL RATIO SENSOR (See page EC-25)**
3. **REMOVE OXYGEN SENSOR (See page EC-27)**
4. **REMOVE EXHAUST PIPE ASSEMBLY TAIL**
 - (a) Remove the 2 bolts and 2 nuts.
 - (b) Remove the exhaust pipe tail from the 4 exhaust pipe supports.
 - (c) Remove the gasket from the exhaust pipe front.
5. **REMOVE EXHAUST PIPE ASSEMBLY FRONT**
 - (a) Remove the 2 bolts and 2 compression springs.
 - (b) Remove the exhaust pipe front from the exhaust pipe support.
 - (c) Remove the gasket from the exhaust manifold.

INSTALLATION

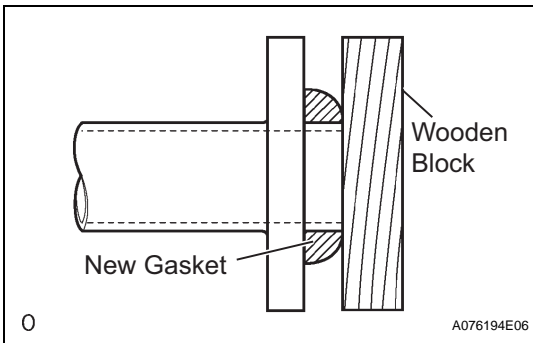
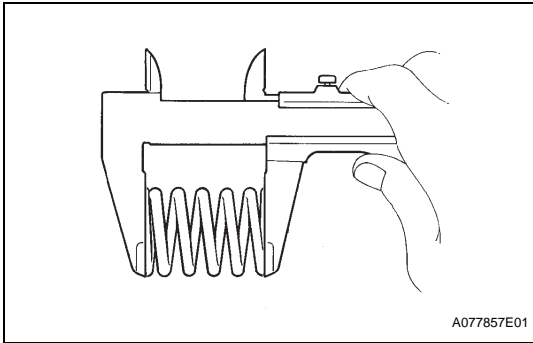
1. **INSTALL EXHAUST PIPE ASSEMBLY FRONT**
 - (a) Check the free length.
 - (1) Using vernier calipers, measure the free length of the compression spring.

Minimum:
40.5 mm (1.594 in.)

 If the free length is less than the minimum, replace the compression spring.
 - (b) Using a wooden block and plastic-faced hammer, tap in a new gasket until it is flush with the exhaust manifold.

NOTICE:

 - **Make sure that the gasket is in the correct angle when installing.**
 - **Do not reuse the removed gasket.**
 - **Never push a new gasket into the exhaust manifold by installing the exhaust pipe front into the exhaust manifold.**
 - (c) Install the exhaust pipe front into the exhaust pipe support.
 - (d) Tighten the 2 bolts and 2 compression springs.
Torque: 43 N*m (438 kgf*cm, 32 ft.*lbf)
2. **INSTALL EXHAUST PIPE ASSEMBLY TAIL**
 - (a) Install a new gasket onto the exhaust pipe front.
 - (b) Install the exhaust pipe tail onto the 4 exhaust pipe supports.
 - (c) Tighten the 2 bolts and 2 nuts.
Torque: 48 N*m (489 kgf*cm, 35 ft.*lbf)
3. **INSTALL OXYGEN SENSOR (See page EC-28)**
4. **INSTALL AIR FUEL RATIO SENSOR (See page EC-28)**



-
5. **CONNECT CABLE TO NEGATIVE BATTERY
TERMINAL**
Torque: 3.9 N*m (40 kgf*cm, 35 in.*lbf)
 6. **CHECK FOR EXHAUST GAS LEAKAGE**