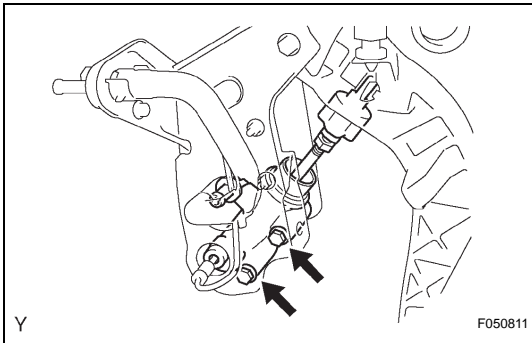
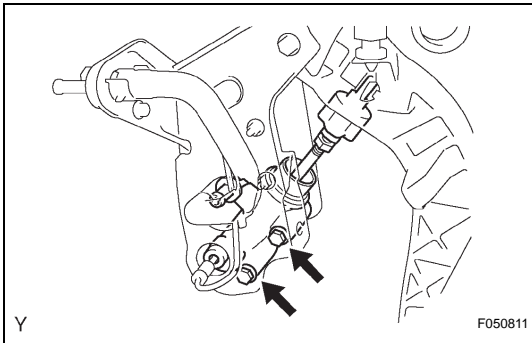


- (c) Remove the nut and clutch start switch from the clutch pedal support.



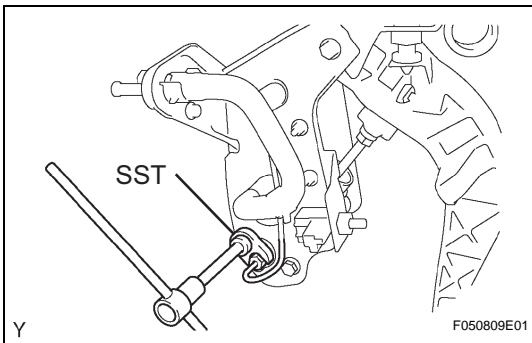
- (d) Remove the 2 bolts, then remove the clutch master cylinder.



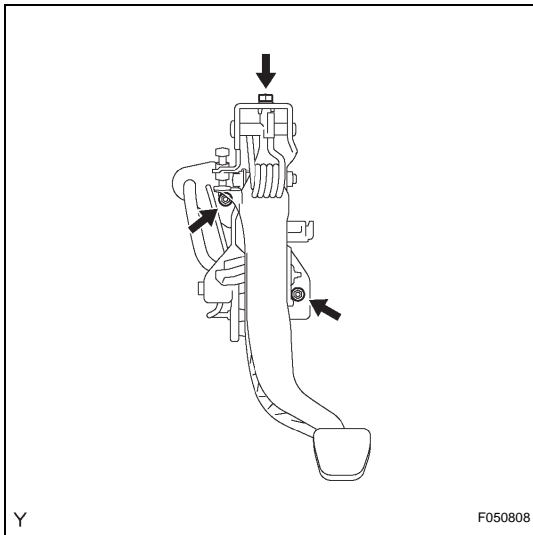
INSTALLATION

1. INSTALL CLUTCH MASTER CYLINDER ASSEMBLY

- (a) Install the clutch master cylinder with the 2 bolts.
Torque: 16 N*m (158 kgf*cm, 11 ft.*lbf)
- (b) Install the clutch start switch with the nut.
Torque: 16 N*m (160 kgf*cm, 12 ft.*lbf)



- (c) Using SST, connect the clutch master cylinder to 2 way tube.
SST 09023-00101
Torque: 15 N*m (155 kgf*cm, 11 ft.*lbf)
- (d) Connect the clutch reservoir tube.



2. INSTALL CLUTCH PEDAL WITH CLUTCH MASTER CYLINDER

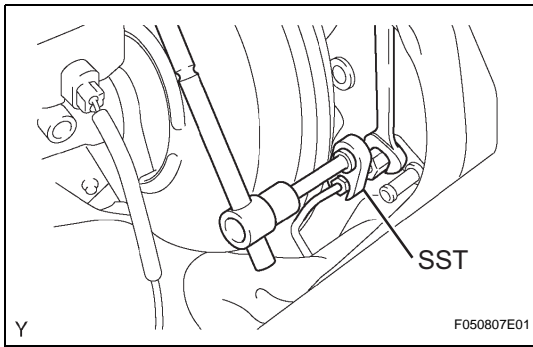
- (a) Install the clutch pedal with clutch master cylinder onto the vehicle with the 2 nuts and bolt.
Torque: 14 N*m (145 kgf*cm, 10 ft.*lbf) for nut
24 N*m (245 kgf*cm, 18 ft.*lbf) for bolt
- (b) Connect the clutch start switch connector.

3. CONNECT DRIVER SIDE JUNCTION BLOCK

4. INSTALL LOWER NO. 1 INSTRUMENT PANEL FINISH PANEL (See page [IP-22](#))

5. INSTALL COWL SIDE TRIM BOARD LH

6. INSTALL FRONT DOOR SCUFF PLATE LH



7. CONNECT CLUTCH MASTER CYLINDER TO FLEXIBLE HOSE TUBE

- (a) Using SST, connect the flexible hose tube.
SST 09023-00101
Torque: 15 N*m (155 kgf*cm, 11 ft.*lbf)

8. CONNECT CLUTCH RESERVOIR TUBE

9. BLEED BRAKE LINE (w/o VSC)

10. BLEED CLUTCH PIPE LINE

11. INSPECT AND ADJUST CLUTCH PEDAL SUB-ASSEMBLY (See page [CL-6](#))

12. CHECK BRAKE FLUID LEAKAGE (w/o VSC)

13. CHECK FOR CLUTCH FLUID LEAKAGE

14. CHECK FLUID LEVEL IN RESERVOIR