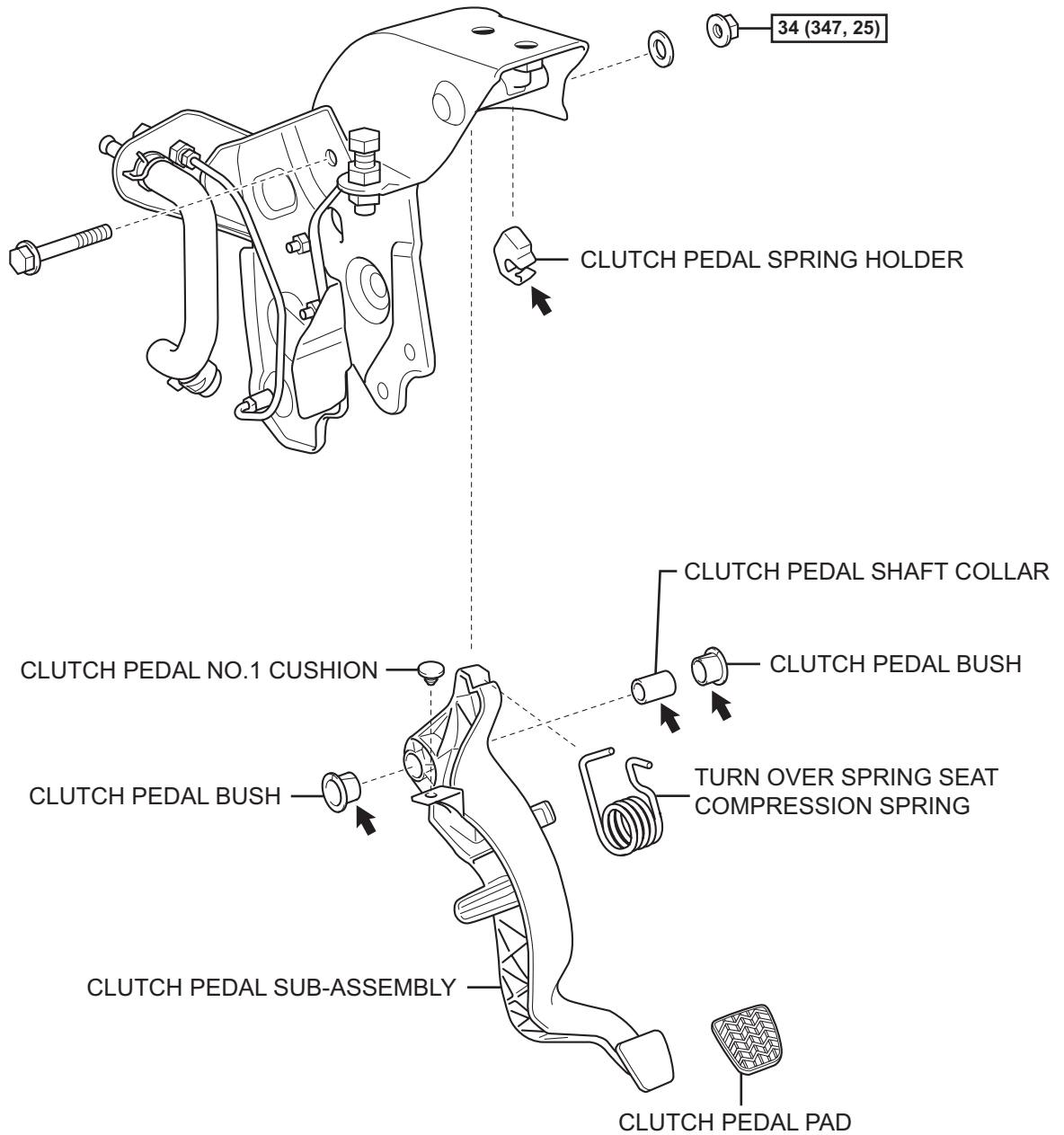



# CLUTCH PEDAL COMPONENTS

CL



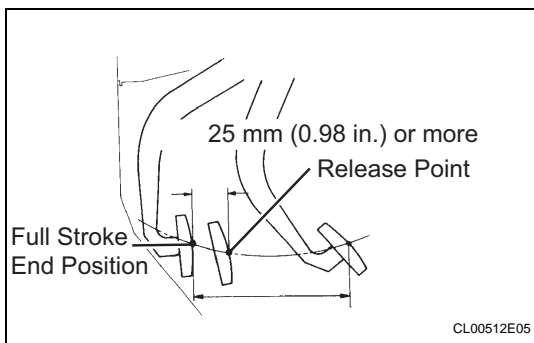
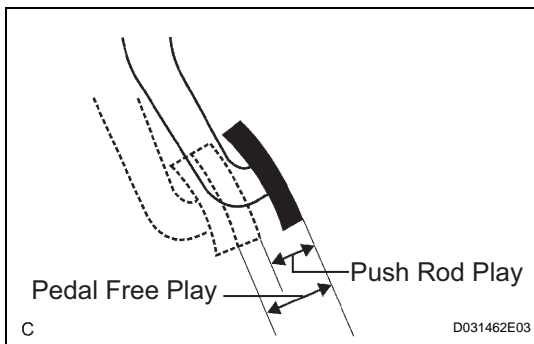
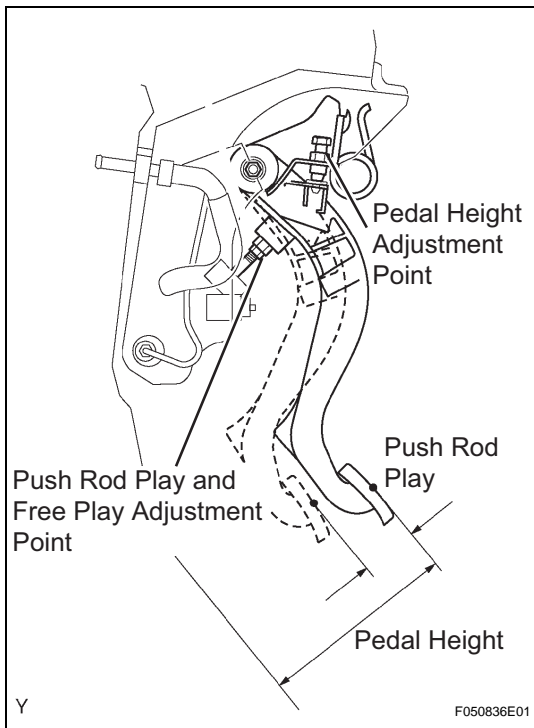
**N\*m (kgf\*cm, ft\*lbf)** :Specified torque

 Apply MP grease

## ON-VEHICLE INSPECTION

### 1. INSPECT AND ADJUST CLUTCH PEDAL SUB-ASSEMBLY

- (a) Lift the floor carpet.
- (b) Check that the pedal height is correct.  
**Pedal height from asphalt sheet:**  
**168.5 to 178.5 mm (6.634 to 7.028 in.)**
- (c) Adjust the pedal height.
  - (1) Loosen the lock nut and turn the stopper bolt until the height is correct. Tighten the lock nut.  
**Torque: 25 N\*m (250 kgf\*cm, 18 ft.\*lbf)**
- (d) Check that the pedal free play and push rod play are correct.
  - (1) Depress the pedal until the clutch resistance begins to be felt.  
**Pedal free play:**  
**5.0 to 15.0 mm (0.197 to 0.591 in.)**
  - (2) Gently depress the pedal until the resistance begins to increase a little.  
**Push rod play at pedal top:**  
**1.0 to 5.0 mm (0.039 to 0.197 in.)**



- (e) Adjust the pedal free play and push rod play.
  - (1) Loosen the lock nut and turn the push rod until the free play and push rod play are correct.
  - (2) Tighten the lock nut.
  - (3) After adjusting the pedal free play, check the pedal height.
  - (4) Connect the air duct and install the lower finish panel.
- (f) Check the clutch release point.
  - (1) Pull the parking brake lever and use wheel chocks.
  - (2) Start the engine and allow it to idle.
  - (3) Without depressing the clutch pedal, slowly move the shift lever into the reverse position until the gears engage.
  - (4) Gradually depress the clutch pedal and measure the stroke distance from the point that the gear noise stops (release point) up to the full stroke end position.  
**Standard distance:**  
**25 mm (0.984 in.) or more**  
**(From pedal stroke end position to release point)**

If the distance is not as specified, perform the following operations.

- Check the pedal height.
- Check the push rod play and pedal free play.
- Bleed the clutch line.
- Check the clutch cover assembly and disc assembly.