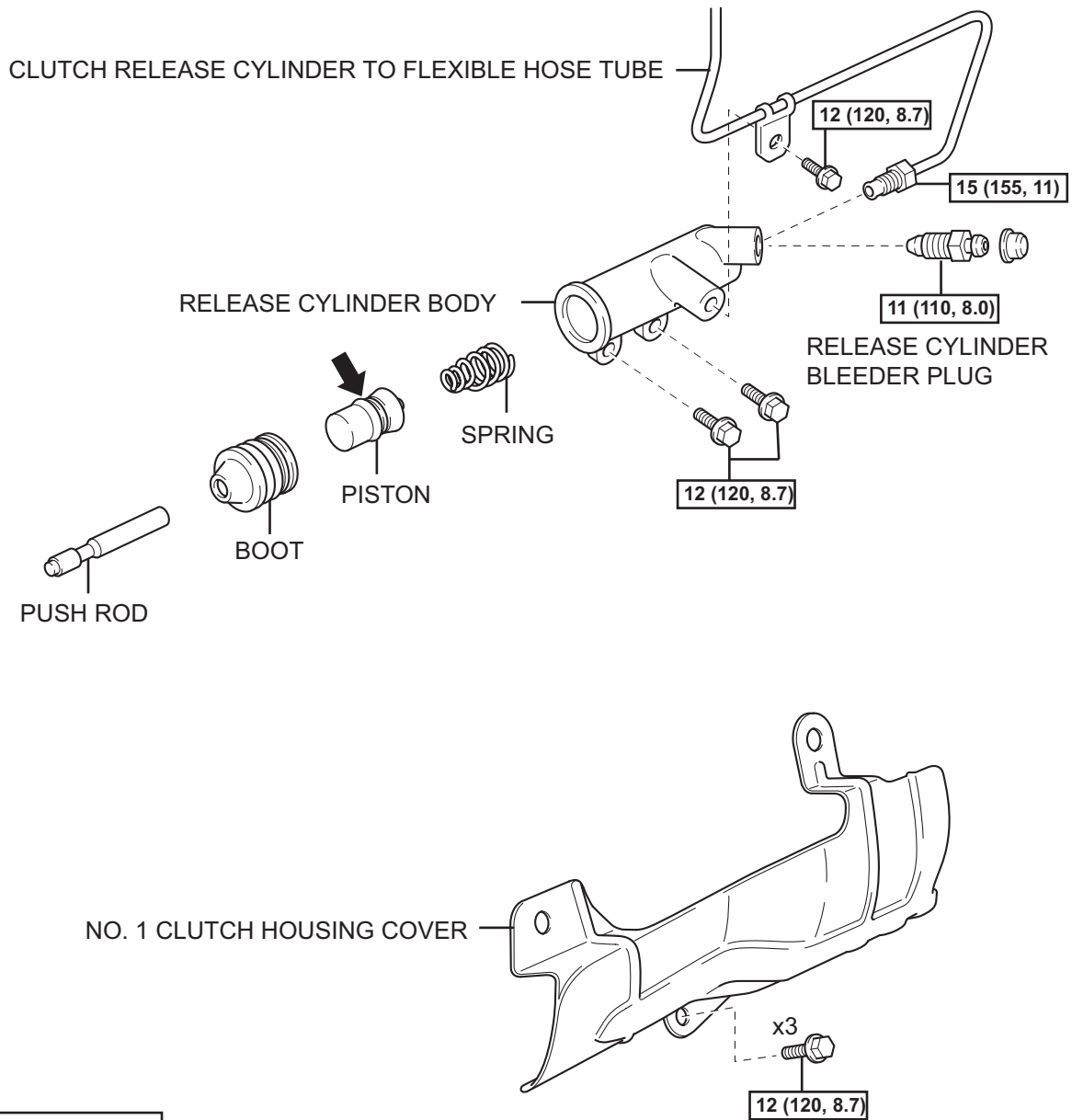


CLUTCH RELEASE CYLINDER (for RA60)

COMPONENTS

CL

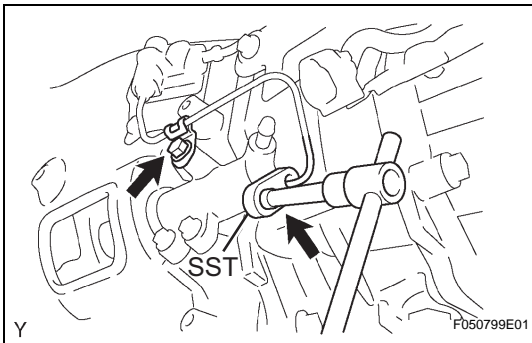
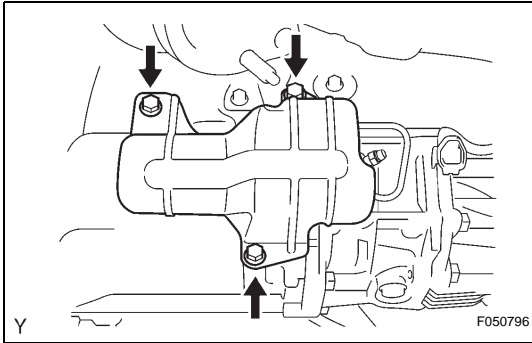


N*m (kgf*cm, ft*lbf) :Specified torque

← Lithium soap base glycol grease

REMOVAL

1. **DRAIN CLUTCH FLUID**
2. **REMOVE NO. 1 CLUTCH HOUSING COVER**
 - (a) Remove the 3 bolts and clutch housing cover No. 1.



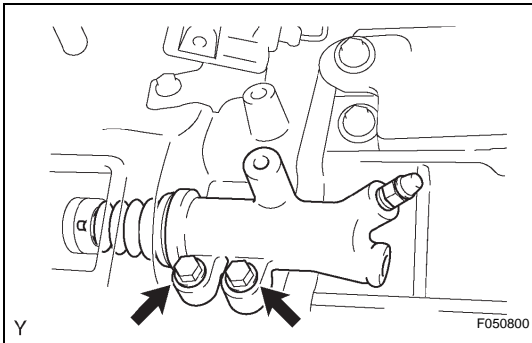
3. **DISCONNECT CLUTCH RELEASE CYLINDER TO FLEXIBLE HOSE TUBE**

- (a) Using SST, disconnect the flexible hose tube.
SST 09023-00101

- (b) Remove the bolt and clutch line bracket.

HINT:

Use a container to catch the fluid.



4. **REMOVE CLUTCH RELEASE CYLINDER ASSEMBLY**

- (a) Remove the 2 bolts and pull out the clutch release cylinder.