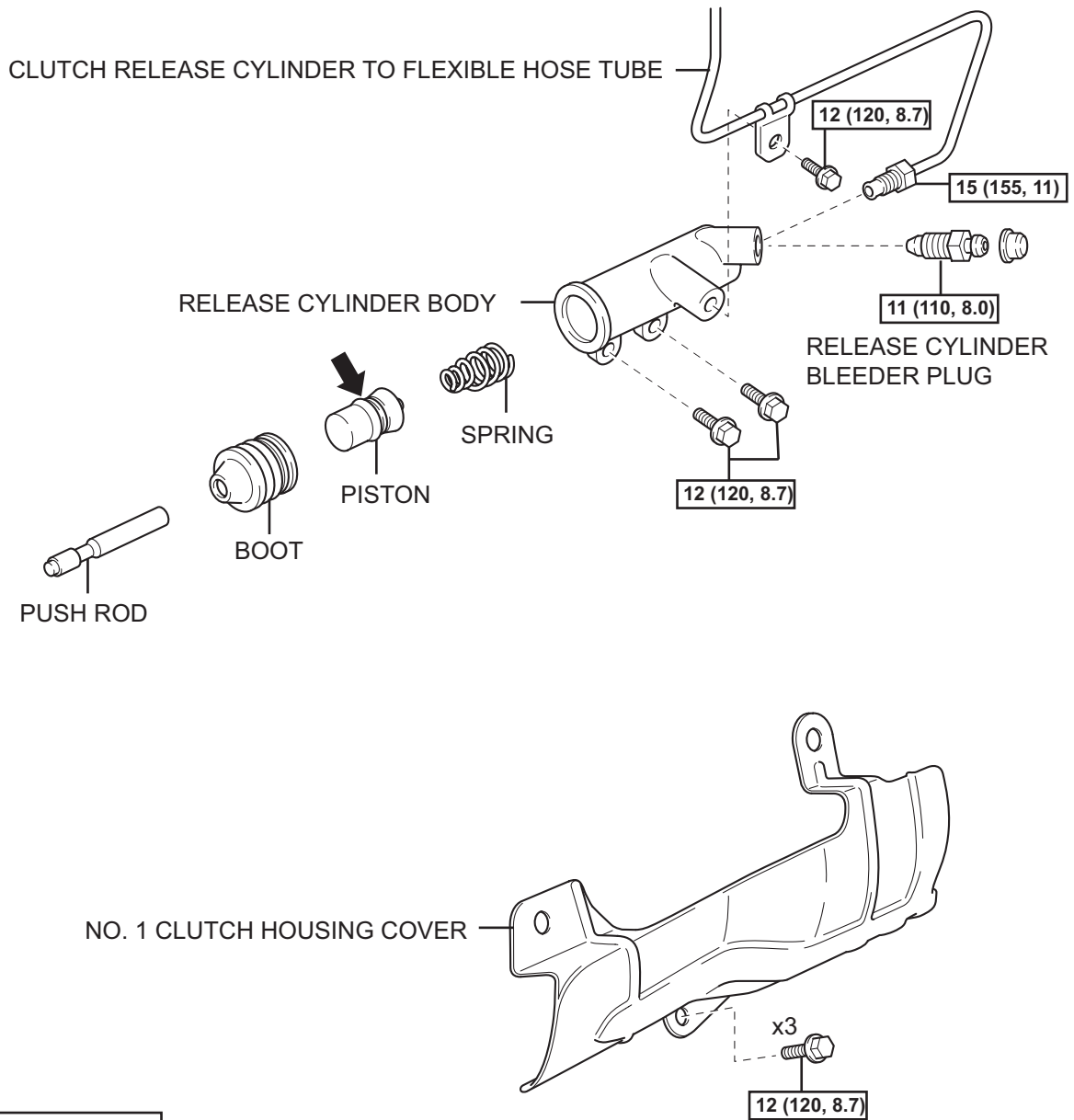


# CLUTCH RELEASE CYLINDER (for RA60F)

## COMPONENTS

CL

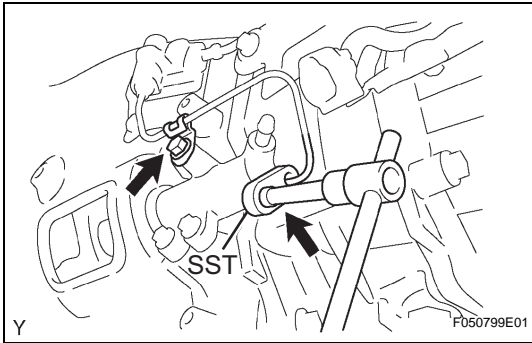
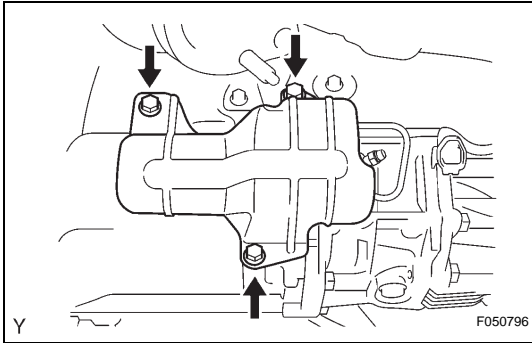


**N\*m (kgf\*cm, ft\*lb)** :Specified torque

**←** Lithium soap base glycol grease

## REMOVAL

1. DRAIN CLUTCH FLUID
2. REMOVE NO. 1 CLUTCH HOUSING COVER
  - (a) Remove the 3 bolts and clutch housing cover No. 1.



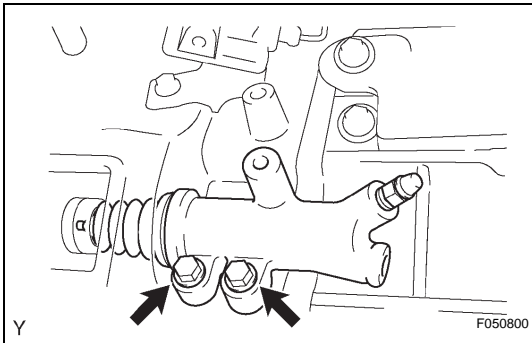
3. DISCONNECT CLUTCH RELEASE CYLINDER TO FLEXIBLE HOSE TUBE

(a) Using SST, disconnect the flexible hose tube.  
**SST 09023-00101**

(b) Remove the bolt and clutch line bracket.

HINT:

Use a container to catch the fluid.



4. REMOVE CLUTCH RELEASE CYLINDER ASSEMBLY

(a) Remove the 2 bolts and pull out the clutch release cylinder.