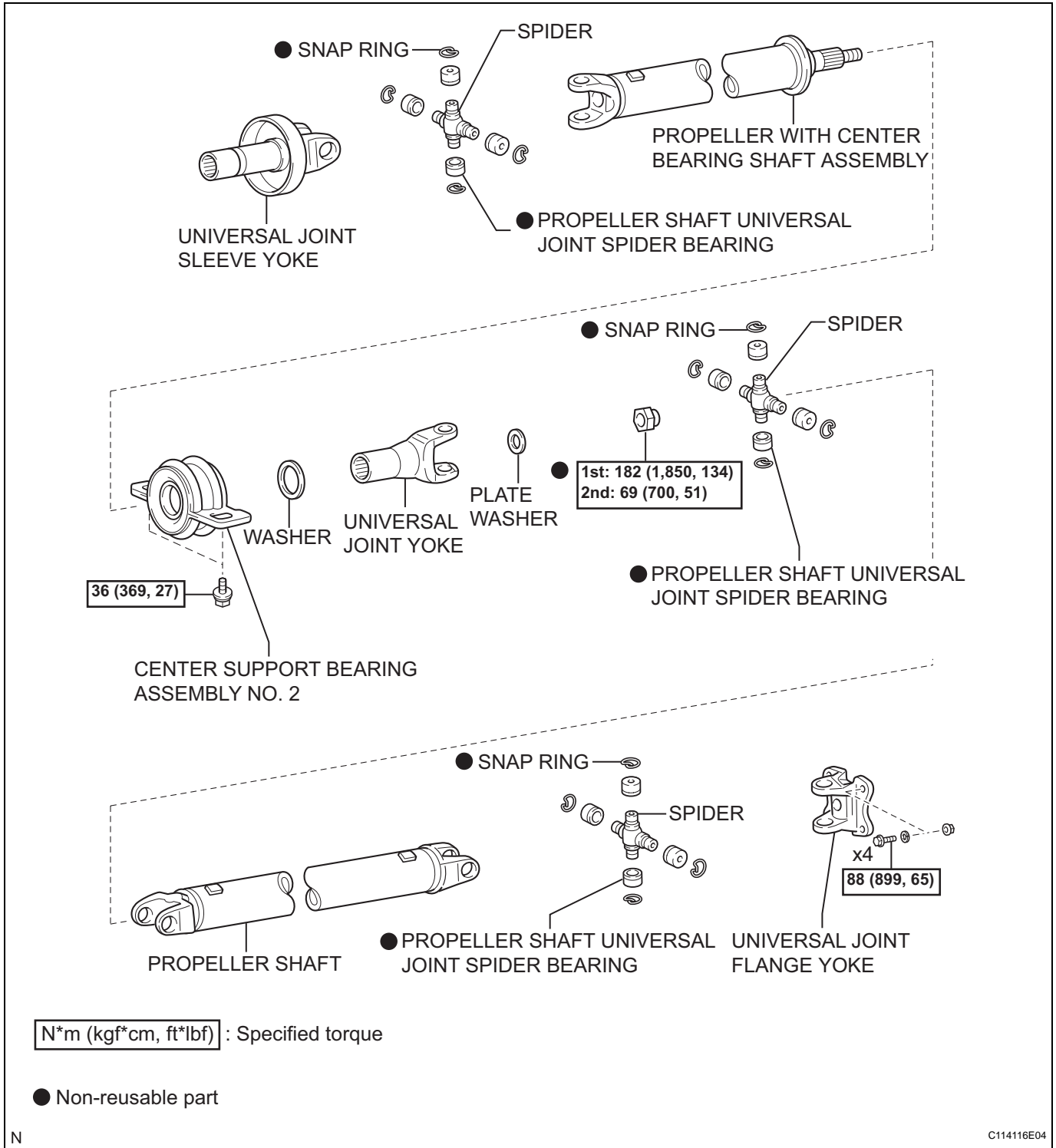
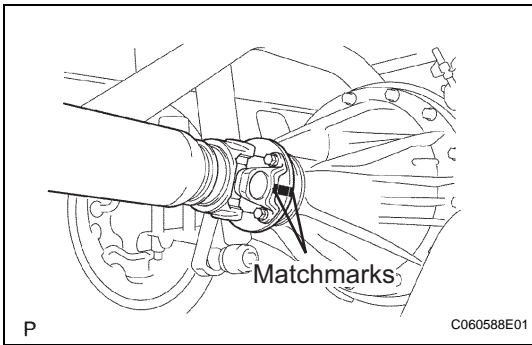


# PROPELLER SHAFT ASSEMBLY (for Access Cab 2WD and Double Cab 2WD)

## COMPONENTS



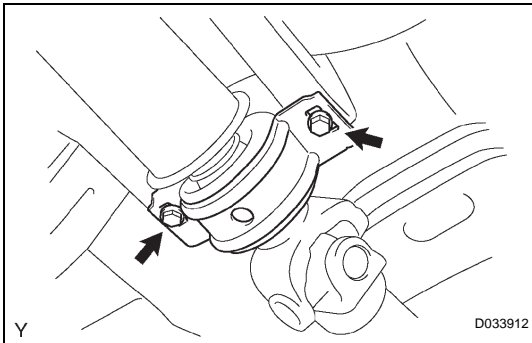
PR



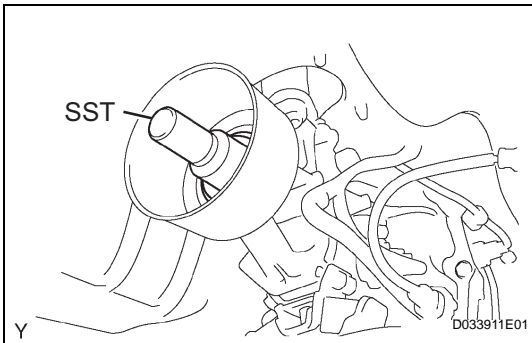
## REMOVAL

### 1. REMOVE PROPELLER WITH CENTER BEARING SHAFT ASSEMBLY

- (a) Place matchmarks on the propeller shaft flange and differential flange.
- (b) Remove the 4 nuts, 4 bolts and 4 washers, and remove the propeller shaft.



- (c) Remove the 2 center support bearing bolts from the frame crossmember.



- (d) Pull out the propeller shaft.
- (e) Insert SST into the transmission to prevent oil leakage.

**SST 09325-40010**