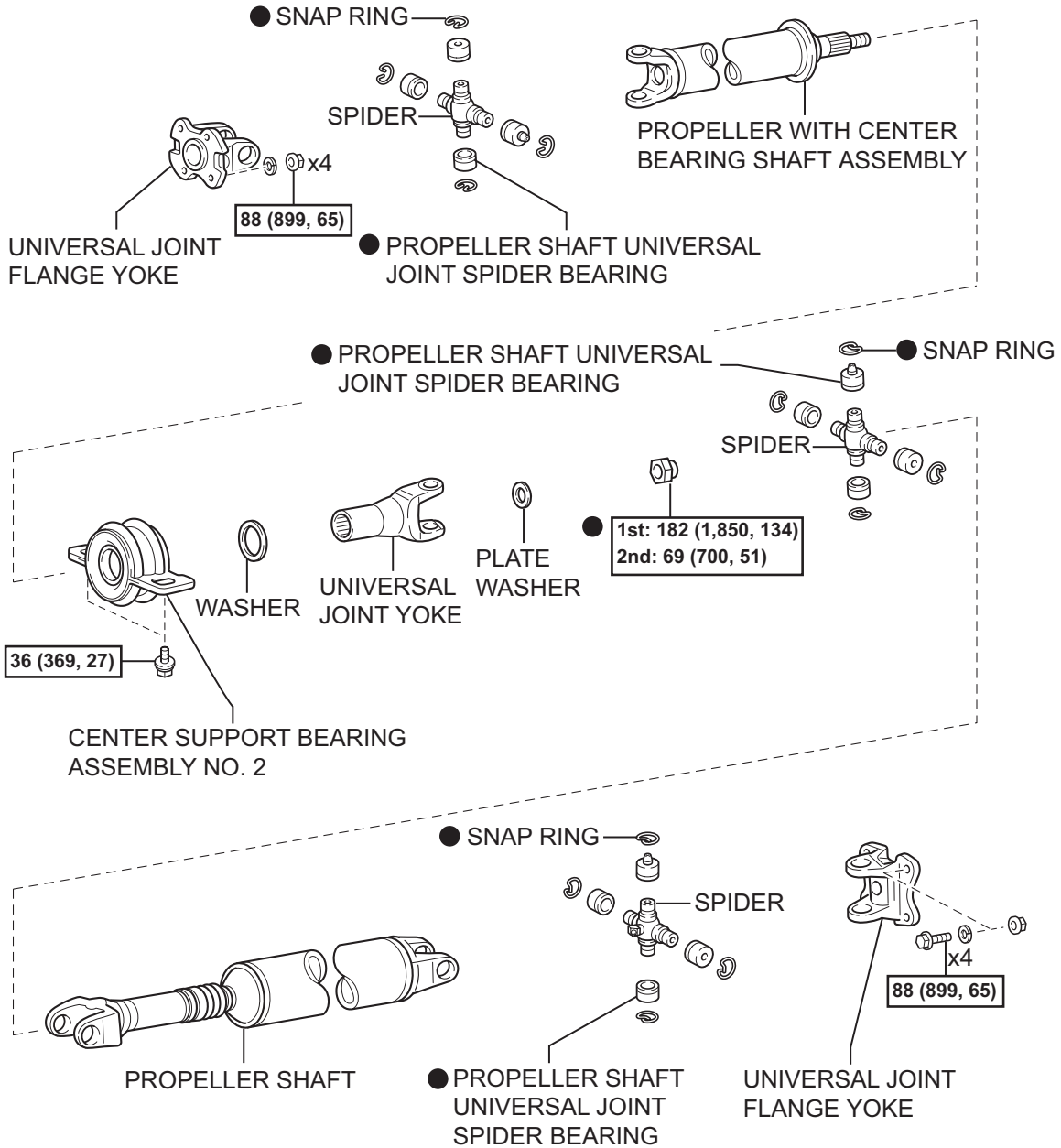


REAR PROPELLER SHAFT ASSEMBLY (for Access Cab 4WD and Double Cab 4WD)

COMPONENTS



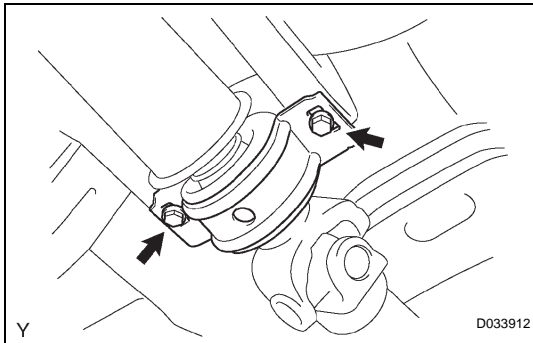
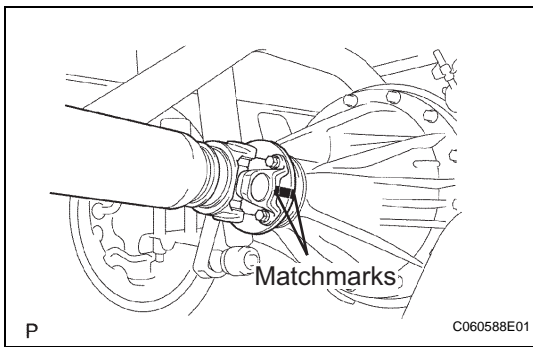
N*m (kgf*cm, ft*lbf) : Specified torque

● Non-reusable part

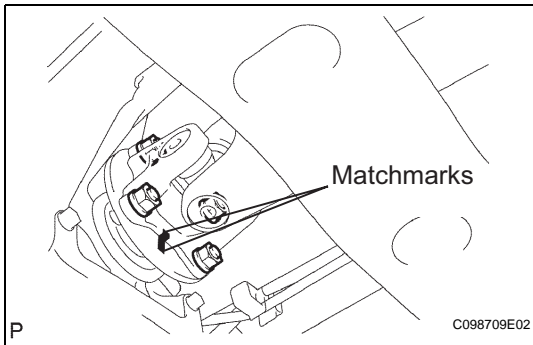
REMOVAL

1. REMOVE PROPELLER WITH CENTER BEARING SHAFT ASSEMBLY

- (a) Place matchmarks on the propeller shaft flange and differential.
- (b) Remove the 4 nuts, 4 bolts, 4 washers and front propeller shaft.



- (c) Remove the 2 center support bearing bolts from the frame crossmember.



- (d) Place matchmarks on the propeller shaft flange and transfer flange.
- (e) Remove the 4 nuts, 4 washers and front propeller shaft.