

DIFFERENTIAL SIDE GEAR SHAFT OIL SEAL (for 4WD)

REMOVAL

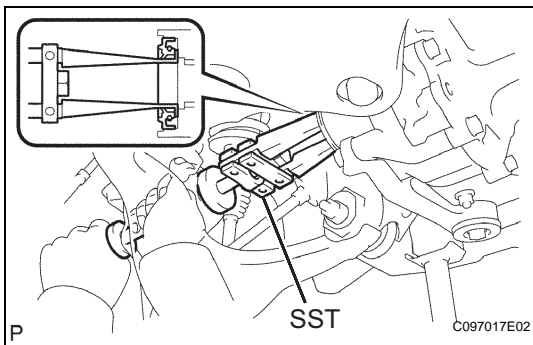
1. **DISCONNECT CABLE FROM NEGATIVE BATTERY TERMINAL**
2. **REMOVE FRONT WHEELS**
3. **REMOVE NO. 1 ENGINE UNDER COVER SUB-ASSEMBLY**
 - (a) Remove the 4 bolts and No. 1 engine under cover sub-assembly.
4. **REMOVE NO. 2 ENGINE UNDER COVER SUB-ASSEMBLY (w/ Engine Under Cover No, 2)**
 - (a) Remove the 4 bolts and No. 2 engine under cover sub-assembly.
5. **DRAIN DIFFERENTIAL OIL**
6. **REMOVE FRONT AXLE HUB LH NUT (See page [DS-3](#))**
7. **REMOVE FRONT AXLE HUB RH NUT**

HINT:
Use the same procedure as for the LH side.
8. **SEPARATE FRONT STABILIZER LINK ASSEMBLY LH (See page [SP-50](#))**
9. **SEPARATE FRONT STABILIZER LINK ASSEMBLY RH (See page [SP-50](#))**
10. **SEPARATE FRONT SPEED SENSOR LH (See page [BC-303](#))**
11. **SEPARATE FRONT SPEED SENSOR RH**

HINT:
Use the same procedure as for the LH side.
12. **SEPARATE TIE ROD END SUB-ASSEMBLY LH (See page [PS-54](#))**
13. **SEPARATE TIE ROD END SUB-ASSEMBLY RH (See page [PS-54](#))**
14. **REMOVE FRONT SUSPENSION LOWER ARM LH (See page [DS-4](#))**
15. **REMOVE FRONT SUSPENSION LOWER ARM RH**

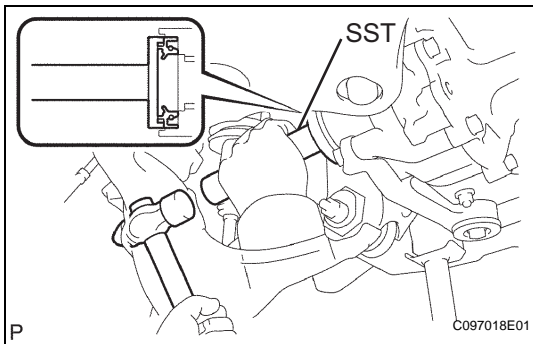
HINT:
Use the same procedure as for the LH side.
16. **REMOVE FRONT DRIVE SHAFT ASSEMBLY LH (See page [DS-4](#))**
17. **REMOVE FRONT DRIVE SHAFT ASSEMBLY RH**

HINT:
Use the same procedure as for the LH side.



18. REMOVE DIFFERENTIAL SIDE GEAR SHAFT OIL SEAL

- (a) Using SST, remove the oil seal.
SST 09308-00010



INSTALLATION

1. **INSTALL DIFFERENTIAL SIDE GEAR SHAFT OIL SEAL**
 - (a) Using SST and a hammer, install a new oil seal.
SST 09554-30011
 - (b) Coat the oil seal lip with MP grease.
2. **INSTALL FRONT DRIVE SHAFT ASSEMBLY LH (See page [DS-9](#))**
3. **INSTALL FRONT DRIVE SHAFT ASSEMBLY RH**
HINT:
Use the same procedure as for the LH side.
4. **INSTALL FRONT SUSPENSION LOWER ARM LH (See page [DS-9](#))**
5. **INSTALL FRONT SUSPENSION LOWER ARM RH**
HINT:
Use the same procedure as for the LH side.
6. **INSTALL TIE ROD END SUB-ASSEMBLY LH (See page [PS-68](#))**
7. **INSTALL TIE ROD END SUB-ASSEMBLY RH (See page [PS-68](#))**
8. **INSTALL FRONT SPEED SENSOR LH (See page [DS-10](#))**
9. **INSTALL FRONT SPEED SENSOR RH**
HINT:
Use the same procedure as for the LH side.
10. **INSTALL FRONT STABILIZER LINK ASSEMBLY LH (See page [SP-51](#))**
11. **INSTALL FRONT STABILIZER LINK ASSEMBLY RH (See page [SP-51](#))**
12. **INSTALL FRONT AXLE HUB LH NUT (See page [AH-20](#))**
13. **INSTALL FRONT AXLE HUB RH NUT**
HINT:
Use the same procedure as for the LH side.
14. **ADD DIFFERENTIAL OIL (See page [DF-8](#))**
15. **INSPECT DIFFERENTIAL OIL (See page [DF-8](#))**

16. INSTALL NO. 1 ENGINE UNDER COVER SUB-ASSEMBLY

- (a) Install the No. 1 engine under cover sub-assembly with the 4 bolts.

Torque: 30 N*m (306 kgf*cm, 22 ft.*lbf)

17. INSTALL NO. 2 ENGINE UNDER COVER SUB-ASSEMBLY (w/ Engine Under Cover No, 2)

- (a) Install the No. 2 engine under cover sub-assembly with the 4 bolts.

Torque: 30 N*m (306 kgf*cm, 22 ft.*lbf)

18. INSTALL FRONT WHEELS

Torque: 113 N*m (1,152 kgf*cm, 83 ft.*lbf)

19. INSPECT AND ADJUST FRONT WHEEL ALIGNMENT

HINT:

(See page [SP-7](#))

20. CONNECT CABLE TO NEGATIVE BATTERY TERMINAL

Torque: 3.9 N*m (40 kgf*cm, 35 in.*lbf)

21. CHECK VSC SENSOR SIGNAL (w/ VSC)

HINT:

(See page [BC-103](#))

22. CHECK ABS SENSOR SIGNAL (w/o VSC)

HINT:

(See page [BC-7](#))