

## REASSEMBLY

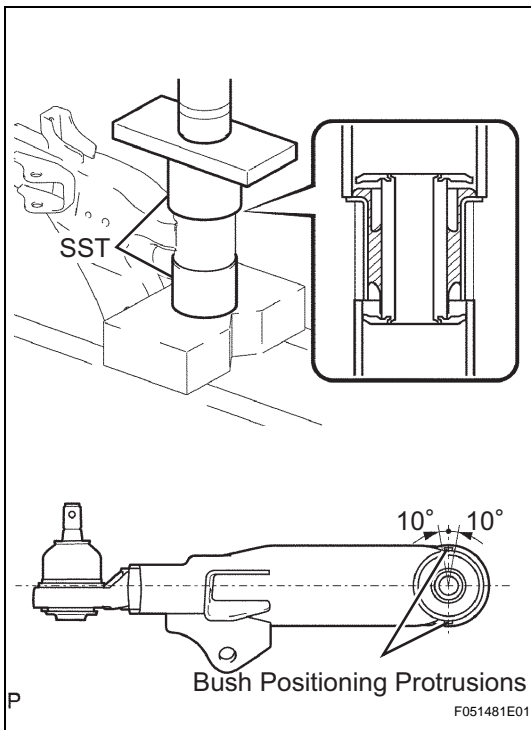
### 1. INSTALL FRONT LOWER ARM BUSH NO. 1

- (a) Using SST, a press and steel plate, install a new lower arm bush.

**SST 09631-12090, 09631-32020**

**NOTICE:**

Push the lower arm bush in until the bush positioning protrusions come to the positions shown in the illustration.



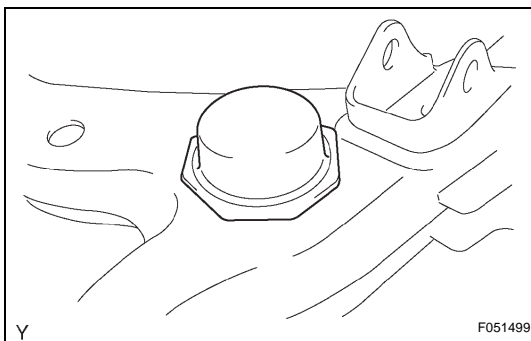
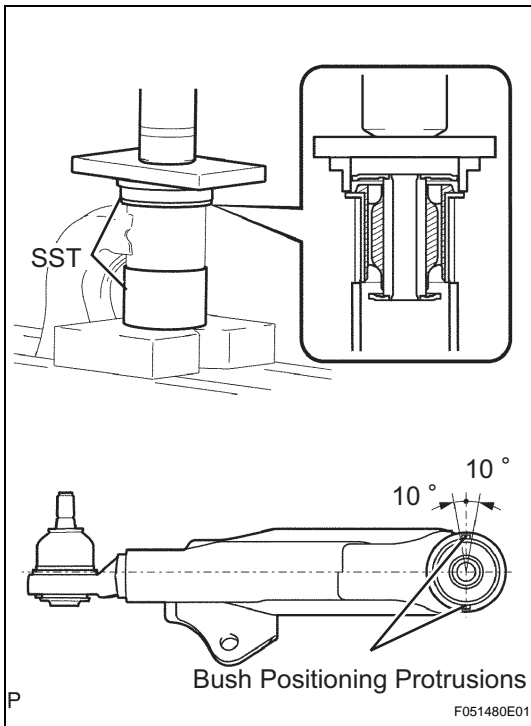
### 2. INSTALL FRONT LOWER ARM BUSH NO. 2

- (a) Using SST, a press and steel plate, install a new lower arm bush.

**SST 09502-12010, 09631-12090**

**NOTICE:**

Push the lower arm bush in until the bush positioning protrusions come to the positions shown in the illustration.

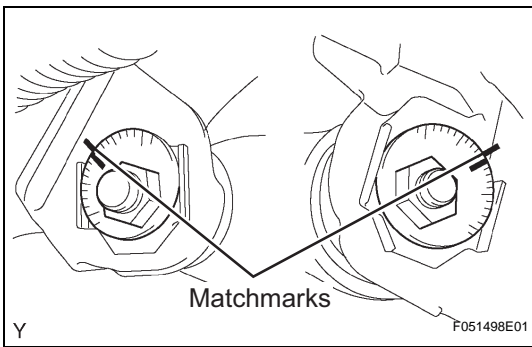


## INSTALLATION

### 1. INSTALL FRONT SPRING BUMPER

- (a) Install the front spring bumper.

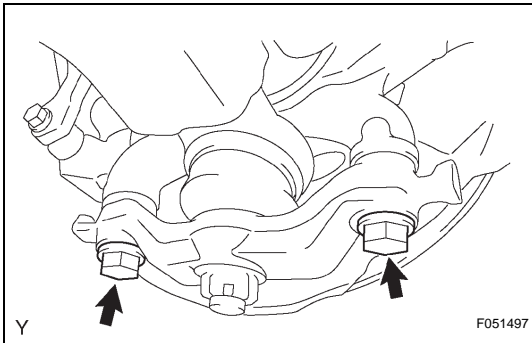
**Torque: 31 N\*m (316 kgf\*cm, 23 ft.\*lbf)**



## 2. TEMPORARILY TIGHTEN FRONT SUSPENSION LOWER ARM

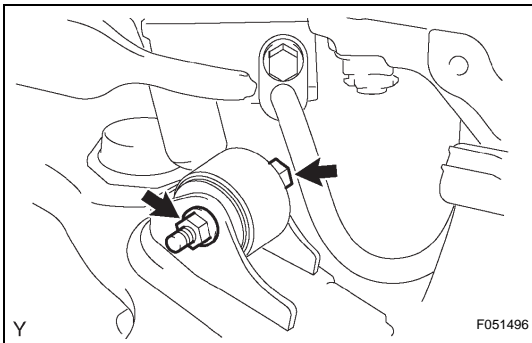
- (a) Align the matchmarks on the 2 camber adjust cams and temporarily tighten the 2 nuts.
- (b) Install the front lower ball joint attachment LH, a new nut and a new cotter pin.

**Torque: 140 N\*m (1,428 kgf\*cm, 103 ft.\*lbf)**



- (c) Install the front lower ball joint attachment LH with the 2 bolts.

**Torque: 160 N\*m (1,631 kgf\*cm, 118 ft.\*lbf)**



## 3. TEMPORARILY TIGHTEN FRONT SHOCK ABSORBER WITH COIL SPRING

- (a) Install the front shock absorber with coil spring, bolt and washer, and temporarily tighten the nut.

## 4. INSTALL FRONT STABILIZER LINK ASSEMBLY (See page [SP-48](#))

## 5. INSTALL FRONT WHEEL

**Torque: 113 N\*m (1,152 kgf\*cm, 83 ft.\*lbf)**

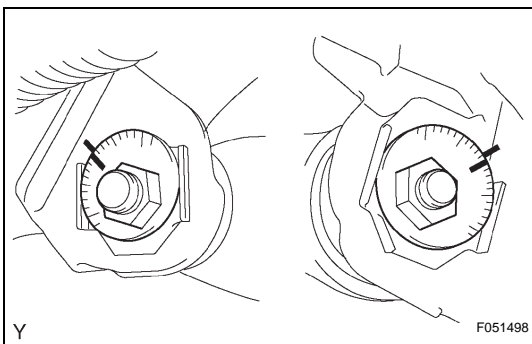
## 6. STABILIZE SUSPENSION

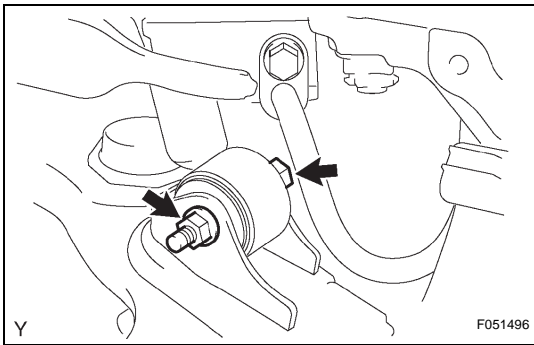
- (a) Jack down the vehicle.
- (b) Bounce the vehicle up and down several times to stabilize the suspension.

## 7. FULLY TIGHTEN FRONT SUSPENSION LOWER ARM

- (a) Fully tighten the 2 nuts.

**Torque: 210 N\*m (2,141 kgf\*cm, 155 ft.\*lbf)**





8. **FULLY TIGHTEN FRONT SHOCK ABSORBER WITH COIL SPRING**
  - (a) Fully tighten the nut.  
**Torque: 83 N\*m (846 kgf\*cm, 61 ft.\*lbf)**
9. **INSPECT AND ADJUST FRONT WHEEL ALIGNMENT**  
(See page [SP-2](#))