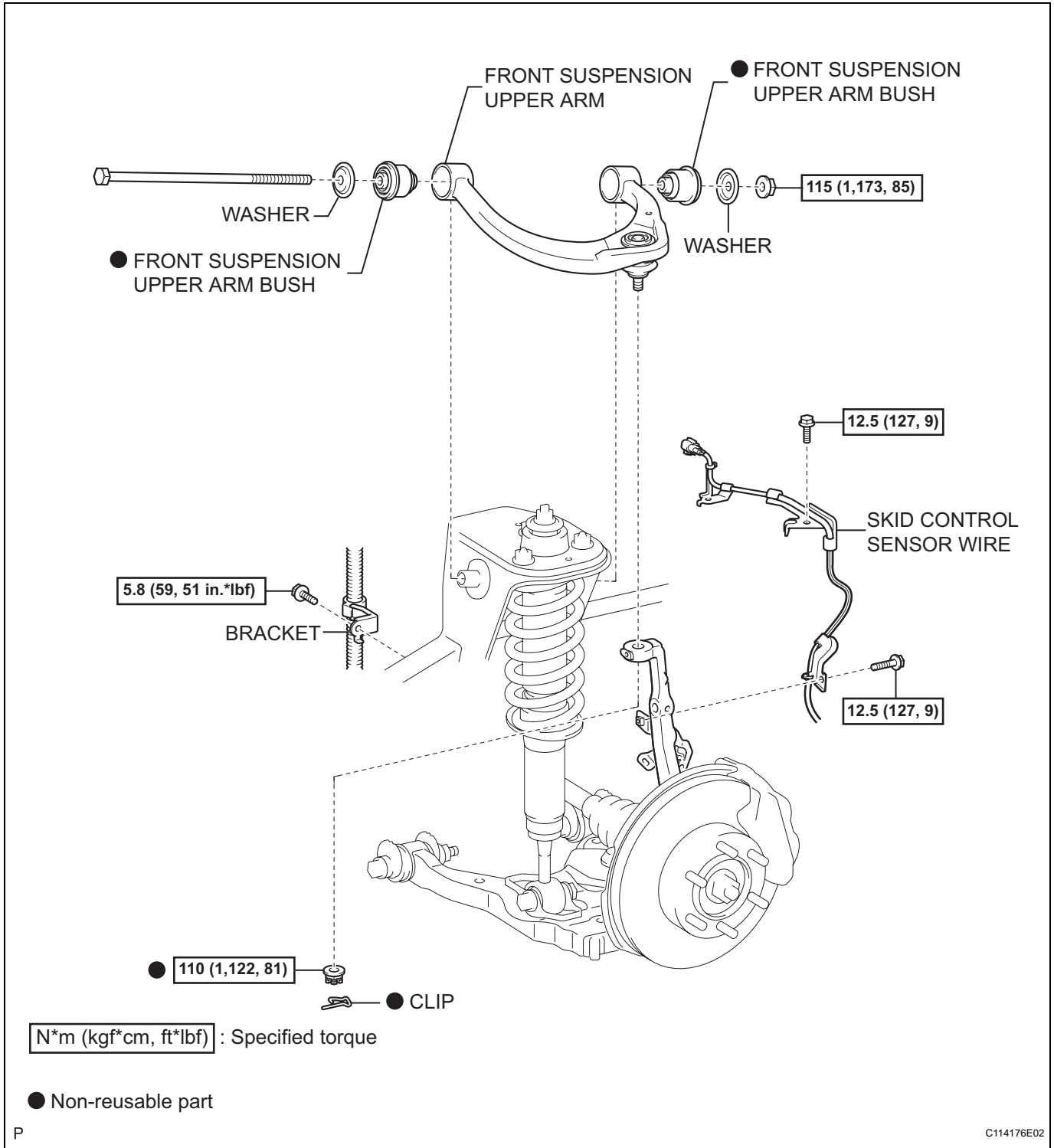


FRONT UPPER SUSPENSION ARM (for 4WD and Pre-Runner)

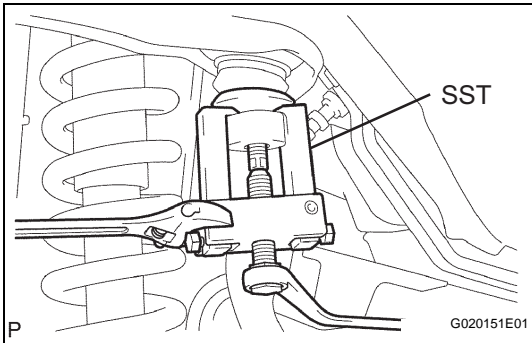
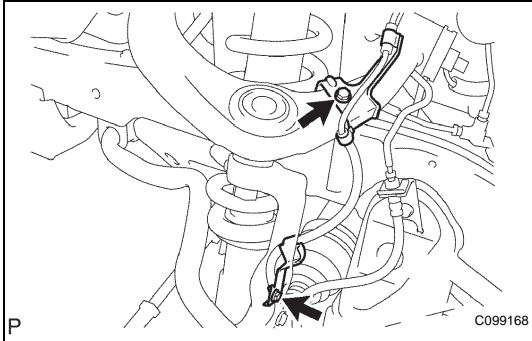
COMPONENTS



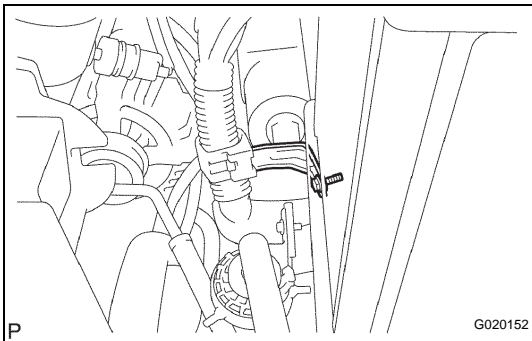
SP

REMOVAL

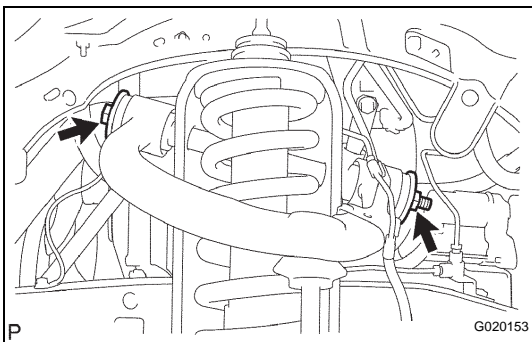
1. REMOVE FRONT WHEEL
2. INSPECT FRONT SUSPENSION UPPER ARM
 - (a) Check that there is no slack on the ball joint by shaking the upper arm up and down by hand.
3. SEPARATE SKID CONTROL SENSOR WIRE
 - (a) Remove the 2 bolts, and separate the skid control sensor wire.



4. REMOVE FRONT SUSPENSION UPPER ARM
 - (a) Support the front suspension lower arm LH with a jack.
 - (b) Remove the clip and nut.
 - (c) Using SST, separate the upper ball joint from the steering knuckle.
SST 09628-62011



- (d) Remove the bolt and bracket.



- (e) Remove the bolt, 2 washers and nut.
- (f) Remove the front suspension upper arm.