

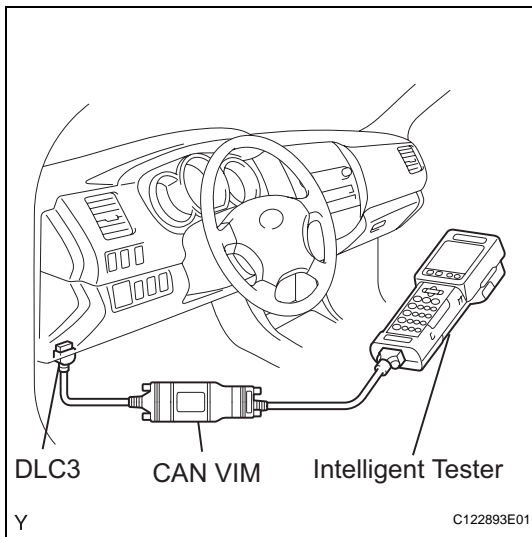
TEST MODE PROCEDURE

1. ENTER TEST MODE

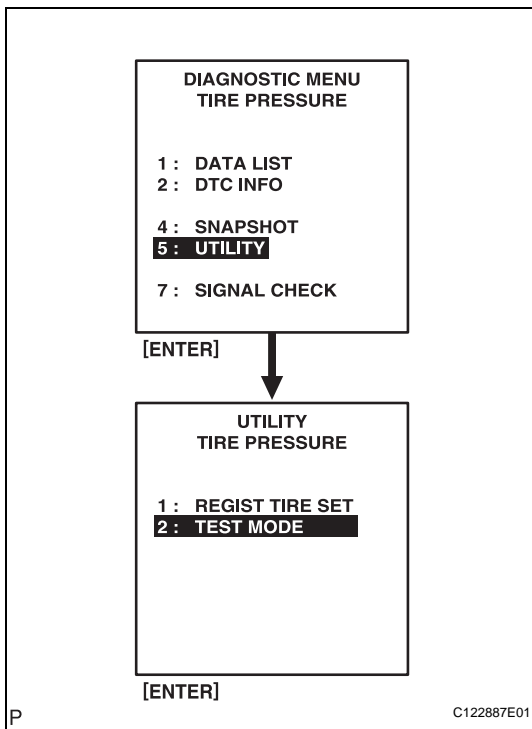
HINT:

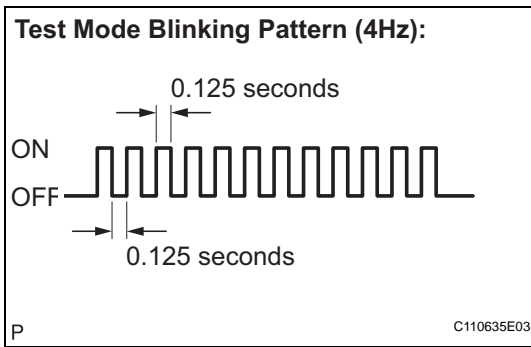
- The operation of the tire pressure warning reset switch can be checked in TEST MODE.
- During TEST MODE, the system cannot be initialized by pressing the tire pressure warning reset switch. The tire pressure warning reset switch circuit can be inspected in this mode.

- Make sure that the ignition switch is off.
- Connect the intelligent tester with CAN VIM to the DLC3.
- Turn the ignition switch to the ON position and turn the tester ON.



- Select TEST MODE on the intelligent tester.





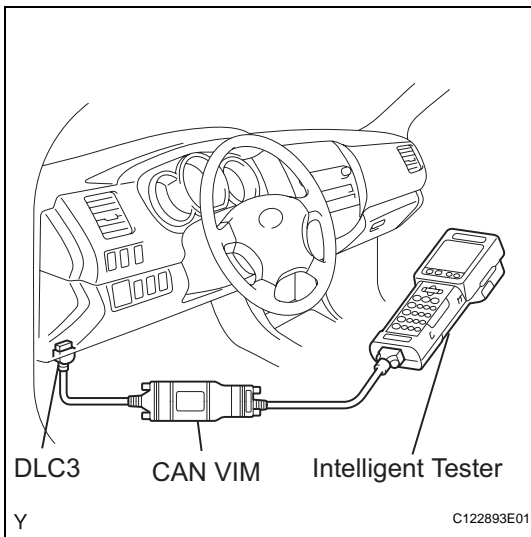
- (e) Confirm that the tire pressure warning light in the combination meter blinks at 0.125 second intervals (4Hz).

HINT:

- When starting the signal checks, the tire pressure warning ECU sets all the signal check DTCs first. After the signal checks for each inspection item have been completed, the DTCs of the items that are determined to be normal by the tire pressure warning ECU are cleared. The DTCs for other inspection items may not be cleared when only a certain signal is inspected.
- When the mode returns from signal check mode to normal mode, all the signal check DTCs are cleared.

TEST MODE CODE

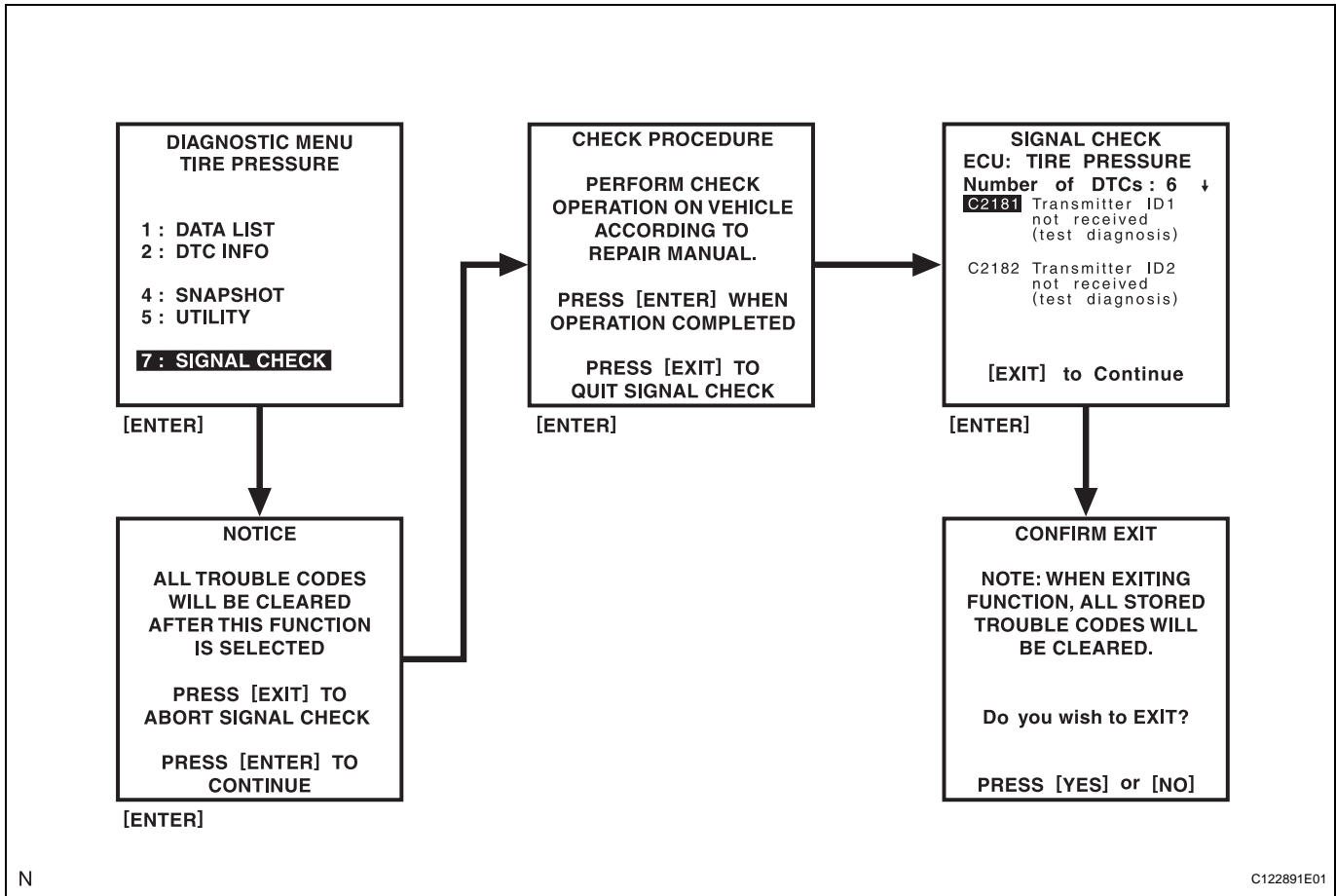
SIGNAL CHECK DTC	Test Signal	SIGNAL CHECK DTC Clear Condition
C2181/81 to C2185/85	Transmitter Data	Data received from the tire pressure warning valve and transmitter which has transmitter ID registered in tire pressure warning ECU
C2191/91	Vehicle Speed Signal	Vehicle speed of 12 mph (20 km/h) or more detected for 3 seconds or more
-	Tire Pressure Reset Switch	-



2. PERFORM SIGNAL CHECK

- Make sure that the ignition switch is off.
- Connect the intelligent tester with CAN VIM to the DLC3.
- Turn the ignition switch to the ON position and turn the tester ON.

(d) Select the SIGNAL CHECK on the intelligent tester.

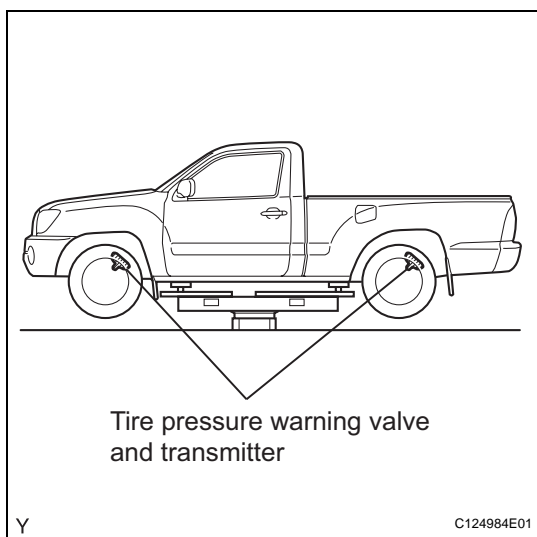


(e) Check the transmission data (for DTCs from C2181/81 to C2185/85)

(1) Set the tire pressures to the appropriate specified values.

Tire Size	Front Wheel kPa (kgf/cm ² , psi)	Rear Wheel kPa (kgf/cm ² , psi)	Spare Wheel kPa (kgf/cm ² , psi)
P215/70 R15	200 (2.0, 29)	220 (2.2, 32)	220 (2.2, 32)
P255/45 R18	240 (2.4, 34)	240 (2.4, 34)	240 (2.4, 34)
P245/75 R16	200 (2.0, 29)	200 (2.0, 29)	200 (2.0, 29)
P265/70 R16 (OPR)*	200 (2.0, 29)	220 (2.2, 32)	220 (2.2, 32)
P265/65 R17	200 (2.0, 29)	200 (2.0, 29)	200 (2.0, 29)

*: Used on Off Road Package Models



- (2) Jack up the vehicle.
- (3) Rapidly release the tire pressure of all the tires to 40 kPa (0.4 kgf/cm², 5.8 psi)/ 30 seconds or more one by one.

HINT:

- It may take up to 1 minute to update the tire pressure data.
- The tire pressure warning light that is blinking at 0.125 second intervals will come on for 1 second when the tire pressure warning ECU receives the transmission data.
- If the transmission data have not been received, reset the tire pressures to the appropriate specified values and rotate the tires 90 to 270 degrees. Then recheck for the transmission data again.

- (f) Check the vehicle speed signal (for DTC C2191/91)
 - (1) Drive the vehicle at 12 mph (20 km/h) or more for 10 seconds or more.

HINT:

The tire pressure warning light that is blinking at 0.125 second intervals will come on for 1 second when the tire pressure warning ECU receives the transmission data.

- (g) Check the tire pressure warning reset switch

HINT:

Since there is no test mode code for the reset switch, check the reset switch by observing the status of the tire pressure warning light.

- (1) Press the tire pressure warning reset switch.
- (2) Check the tire pressure warning light blinking pattern.

Result

Test Signal	Normal Condition
Tire Pressure Warning Reset Switch	<ul style="list-style-type: none"> • Switch ON: Tire pressure warning light comes on • Switch OFF: Tire pressure warning light blinks (4Hz)

- (h) Read the test mode code.
 - (1) After the signal check has been completed, check for signal check DTCs to confirm the system status (See page TW-26).
- (i) Clear the DTCs.

HINT:

When the mode returns from signal check mode to normal mode, all the signal check DTCs are cleared.
- (j) End SIGNAL CHECK

After SIGNAL CHECK has finished, turn the ignition switch off and disconnect the tester.

HINT:

If a trouble code is displayed during the test mode DTC check, check the circuit indicated by the code. For details of each code, refer to the relevant page listed under respective "DTC No." in the table below.

TEST MODE DTCs

DTC No.	Detection Item	Trouble Area
C2181/81 (See page TW-37)	Transmitter ID1 not received	<ul style="list-style-type: none"> • Tire pressure warning antenna and receiver • Each tire pressure warning valve and transmitter • Tire pressure warning ECU • Wire harness or connector
C2182/82 (See page TW-37)	Transmitter ID2 not received	<ul style="list-style-type: none"> • Tire pressure warning antenna and receiver • Each tire pressure warning valve and transmitter • Tire pressure warning ECU • Wire harness or connector
C2183/83 (See page TW-37)	Transmitter ID3 not received	<ul style="list-style-type: none"> • Tire pressure warning antenna and receiver • Each tire pressure warning valve and transmitter • Tire pressure warning ECU • Wire harness or connector
C2184/84 (See page TW-37)	Transmitter ID4 not received	<ul style="list-style-type: none"> • Tire pressure warning antenna and receiver • Each tire pressure warning valve and transmitter • Tire pressure warning ECU • Wire harness or connector
C2185/85 (See page TW-37)	Transmitter ID5 not received	<ul style="list-style-type: none"> • Tire pressure warning antenna and receiver • Each tire pressure warning valve and transmitter • Tire pressure warning ECU • Wire harness or connector
C2191/91 (See page TW-55)	Vehicle speed signal error	<ul style="list-style-type: none"> • Vehicle speed sensor • Combination meter • Tire pressure warning ECU • Wire harness or connector