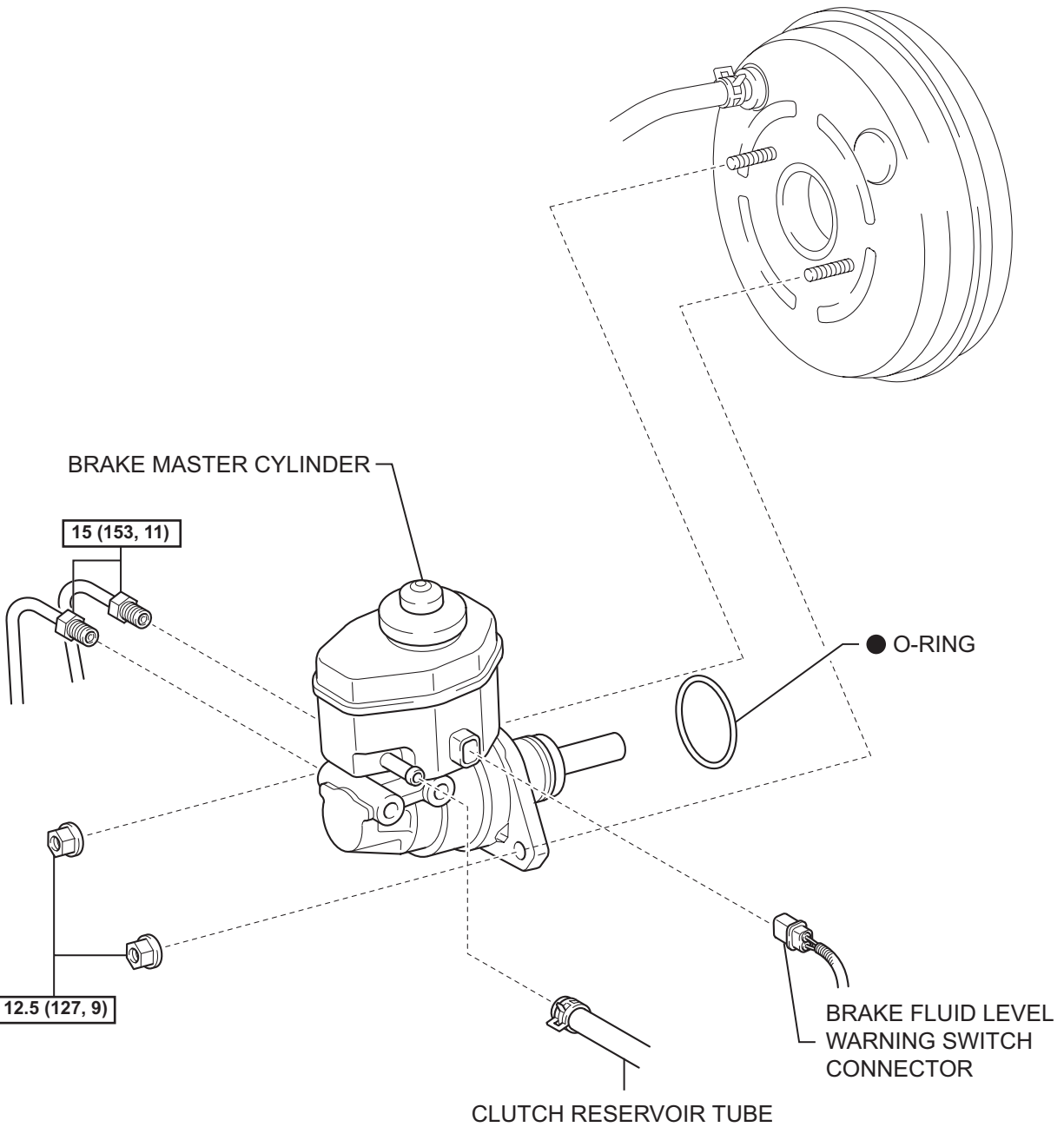


BRAKE MASTER CYLINDER (w/o VSC)

COMPONENTS



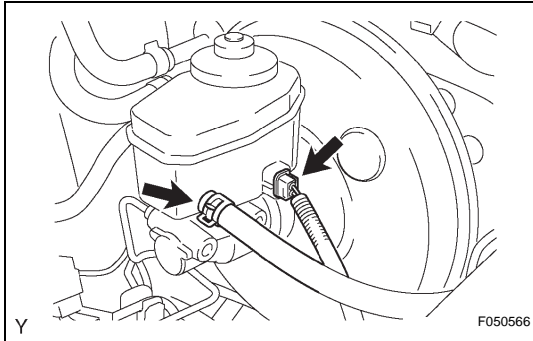
BR

N*m (kgf*cm, ft*lbf) : Specified torque

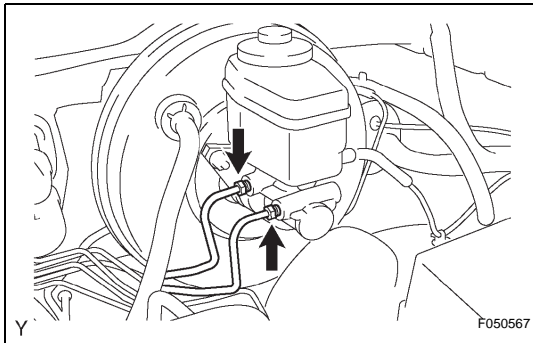
● Non-reusable part

REMOVAL

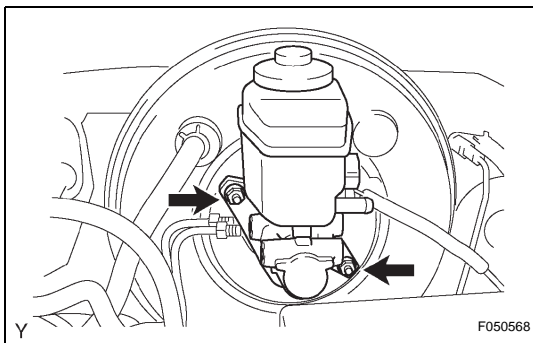
1. **DISCONNECT CABLE FROM NEGATIVE BATTERY TERMINAL**
2. **DRAIN BRAKE FLUID**
NOTICE:
Immediately wash off any brake fluid that comes into contact with any painted surfaces.



3. **REMOVE BRAKE MASTER CYLINDER**
 - (a) Disconnect the brake fluid level warning switch connector.
 - (b) for Manual Transmission:
 - (1) Disconnect the clutch reservoir tube from the reservoir.



- (c) Using SST, disconnect the 2 brake lines from the brake master cylinder.
SST 09023-00101



- (d) Remove the 2 nuts, then pull the brake master cylinder out of the brake booster.
- (e) Remove the O-ring from the brake master cylinder.