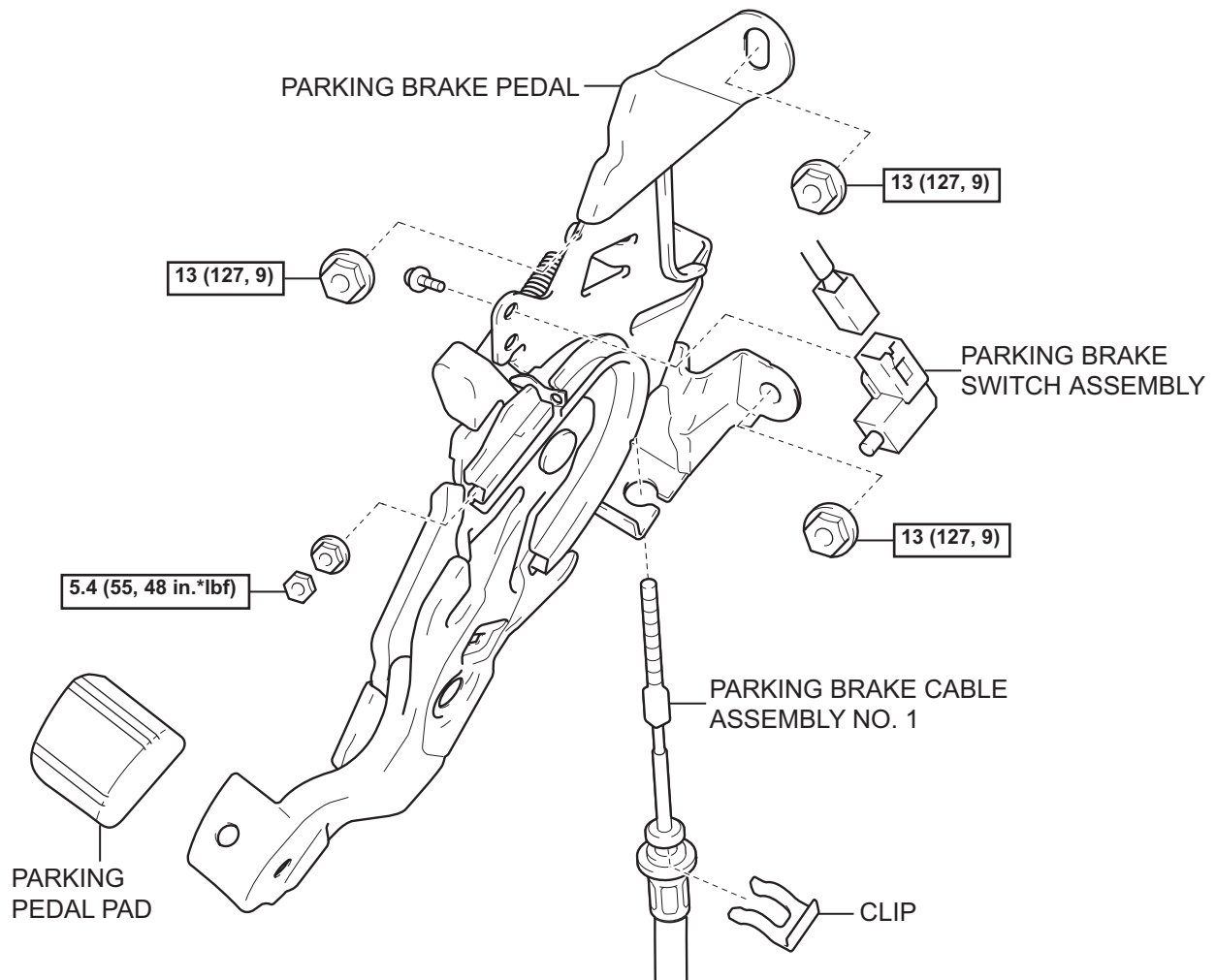


PARKING BRAKE PEDAL (for Automatic Transmission)

COMPONENTS



PB

N*m (kgf*cm, ft*lbf) : Specified torque

REMOVAL

1. **DISCONNECT CABLE FROM NEGATIVE BATTERY TERMINAL**
2. **REMOVE PARKING BRAKE CABLE ASSEMBLY NO. 1**
 - (a) Disengage the claw A.
 - (b) Remove the lock nut B, adjusting nut C, clip D and parking brake cable assembly No. 1.
3. **REMOVE PARKING BRAKE PEDAL**
 - (a) Release the parking brake pedal.
 - (b) Disconnect the parking brake switch connector.
 - (c) Remove the 3 nuts and parking brake control pedal assembly.
4. **REMOVE PARKING BRAKE SWITCH ASSEMBLY**
 - (a) Remove the screw and parking brake switch assembly.
5. **REMOVE PARKING PEDAL PAD**

