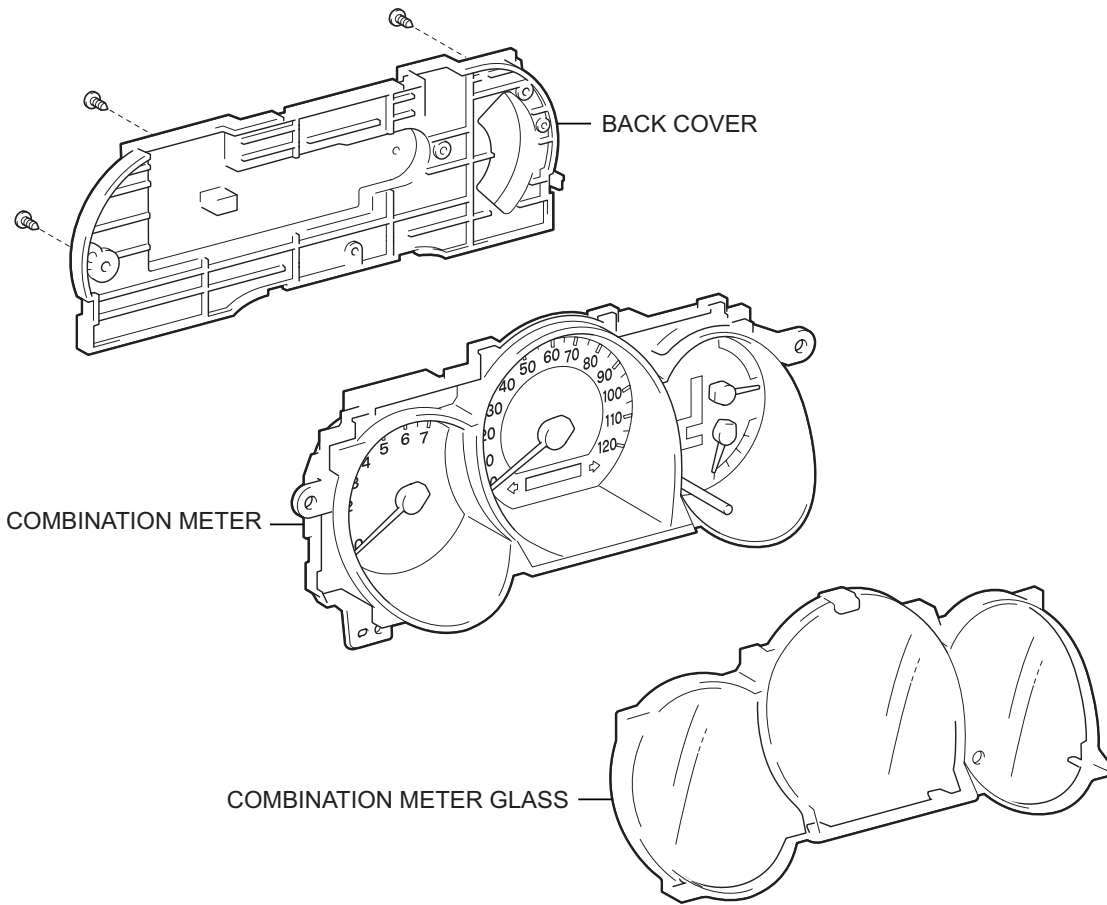


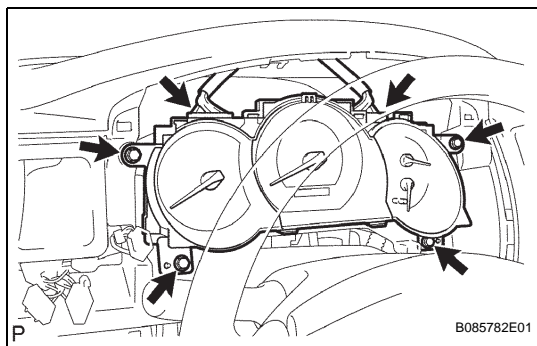
COMBINATION METER

COMPONENTS



REMOVAL

1. DISCONNECT CABLE FROM NEGATIVE BATTERY TERMINAL
2. REMOVE FRONT FLOOR FOOTREST (See page [IR-1](#))
3. REMOVE FRONT DOOR SCUFF PLATE LH (for Regular Cab) (See page [IR-40](#))
4. REMOVE FRONT DOOR SCUFF PLATE LH (for Access Cab) (See page [IR-61](#))
5. REMOVE FRONT DOOR SCUFF PLATE LH (for Double Cab) (See page [IR-12](#))
6. REMOVE COWL SIDE TRIM BOARD LH (for Regular Cab) (See page [IR-40](#))
7. REMOVE COWL SIDE TRIM BOARD LH (for Access Cab) (See page [IR-61](#))
8. REMOVE COWL SIDE TRIM BOARD LH (for Double Cab) (See page [IR-12](#))
9. REMOVE INSTRUMENT PANEL UNDER TRAY (for Pedal Type Parking Brake) (See page [IP-9](#))
10. REMOVE INSTRUMENT PANEL HOLE COVER (for Lever Type Parking Brake) (See page [IP-9](#))
11. SEPARATE HOOD LOCK CONTROL LEVER SUB-ASSEMBLY (See page [ED-3](#))
12. REMOVE LOWER NO. 1 INSTRUMENT PANEL FINISH PANEL (See page [IP-12](#))
13. REMOVE INSTRUMENT CLUSTER FINISH PANEL SUB-ASSEMBLY (See page [IP-12](#))
14. REMOVE COMBINATION METER ASSEMBLY
 - (a) Remove the 4 screws and the combination meter assembly.
 - (b) Disconnect the 2 connectors.



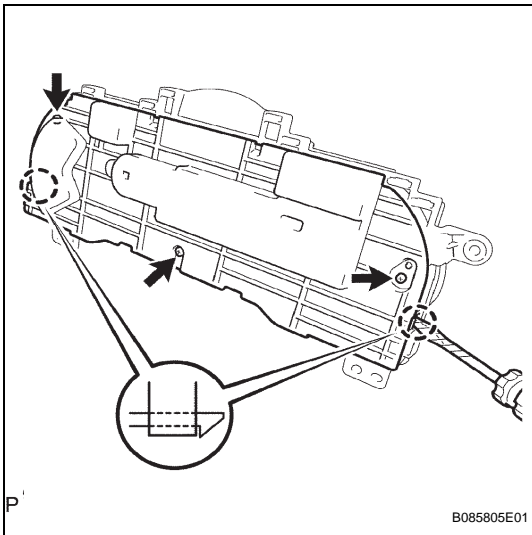
DISASSEMBLY

1. REMOVE BACK COVER

- (a) Remove the 3 screws.
- (b) Using a screwdriver, disengage the 2 claws and remove the back cover.

HINT:

Tape up the screwdriver tip before use.

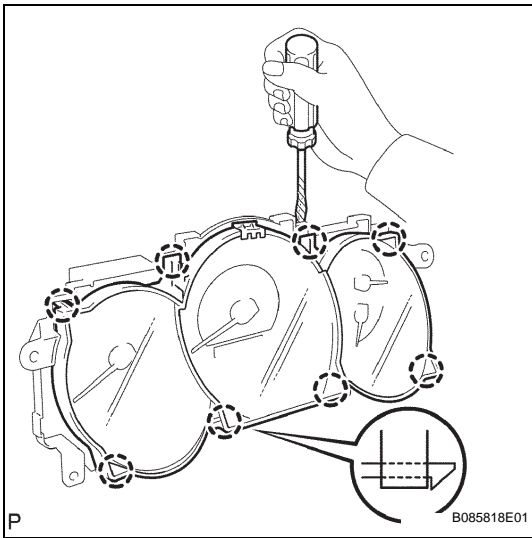


2. REMOVE COMBINATION METER GLASS

- (a) Using a screwdriver, disengage the 8 claws and remove the combination meter glass.

HINT:

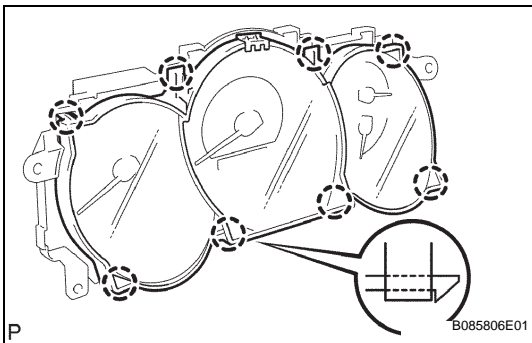
Tape up the screwdriver tip before use.

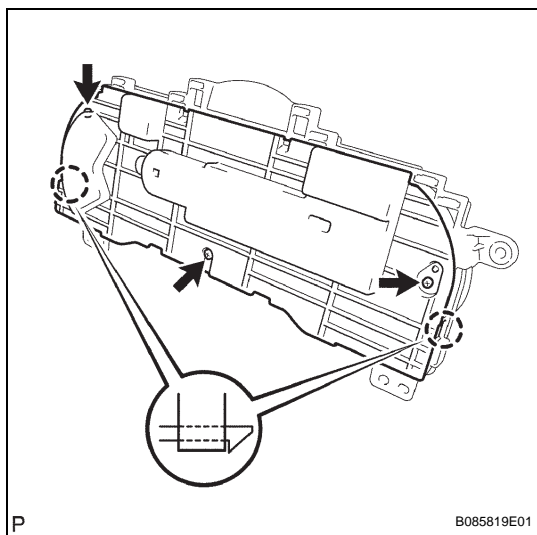


REASSEMBLY

1. INSTALL COMBINATION METER GLASS

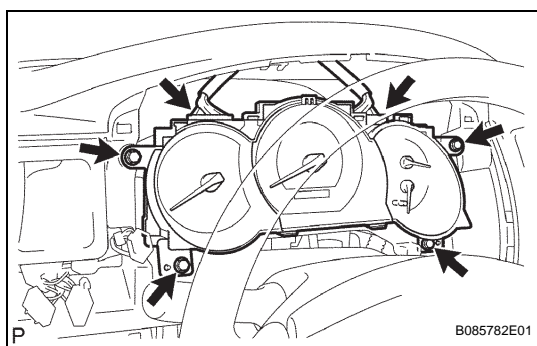
- (a) Engage the 8 claws and install the combination meter glass.





2. REMOVE BACK COVER

- (a) Engage the 2 claws and install the back cover.
- (b) Install the 3 screws.



INSTALLATION

1. INSTALL COMBINATION METER ASSEMBLY

- (a) Connect the 2 connectors.
- (b) Install the combination meter assembly with the 4 screws.

Torque: 7.0 N*m (71 kgf*cm, 62 in.*lbf)

2. INSTALL INSTRUMENT CLUSTER FINISH PANEL SUB-ASSEMBLY (See page [IP-21](#))
3. INSTALL LOWER NO. 1 INSTRUMENT PANEL FINISH PANEL (See page [IP-22](#))
4. CONNECT HOOD LOCK CONTROL LEVER SUB-ASSEMBLY (See page [ED-8](#))
5. INSTALL INSTRUMENT PANEL HOLE COVER (for Lever Type Parking Brake) (See page [IP-25](#))
6. INSTALL INSTRUMENT PANEL UNDER TRAY (for Pedal Type Parking Brake) (See page [IP-25](#))
7. INSTALL COWL SIDE TRIM BOARD LH (for Regular Cab) (See page [IR-52](#))
8. INSTALL COWL SIDE TRIM BOARD LH (for Access Cab) (See page [IR-75](#))
9. INSTALL COWL SIDE TRIM BOARD LH (for Double Cab) (See page [IR-29](#))
10. INSTALL FRONT DOOR SCUFF PLATE LH (for Regular Cab) (See page [IR-52](#))
11. INSTALL FRONT DOOR SCUFF PLATE LH (for Access Cab) (See page [IR-75](#))
12. INSTALL FRONT DOOR SCUFF PLATE LH (for Double Cab) (See page [IR-29](#))
13. INSTALL FRONT FLOOR FOOTREST (See page [IR-1](#))
14. CONNECT CABLE TO NEGATIVE BATTERY TERMINAL
Torque: 3.9 N*m (40 kgf*cm, 35 in.*lbf)