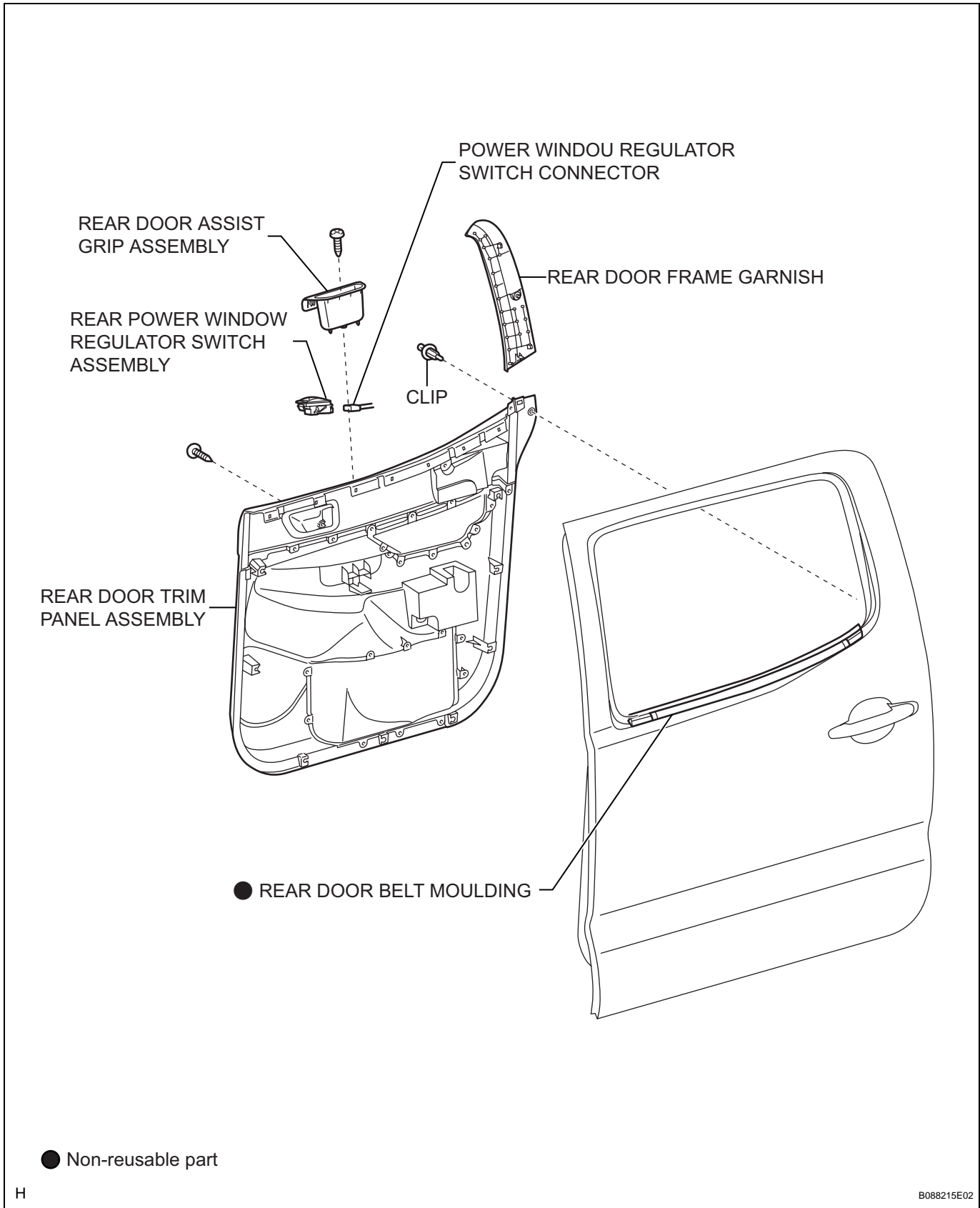


REAR DOOR BELT MOULDING

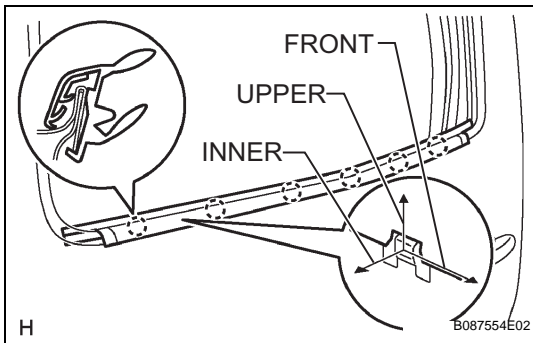
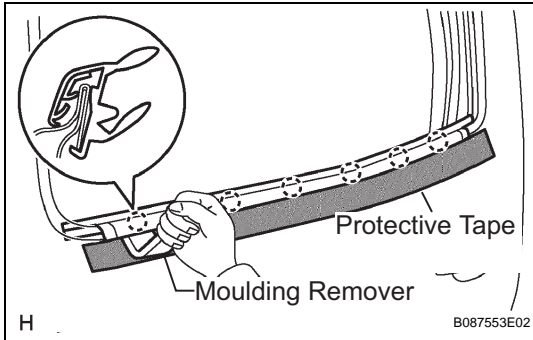
COMPONENTS



ET

REMOVAL

1. **DISCONNECT CABLE FROM NEGATIVE BATTERY TERMINAL**
2. **REMOVE REAR DOOR FRAME GARNISH (See page ED-68)**
3. **REMOVE REAR POWER WINDOW REGULATOR SWITCH ASSEMBLY (See page ED-68)**
4. **REMOVE REAR DOOR TRIM PANEL ASSEMBLY (See page ED-68)**
5. **REMOVE REAR DOOR BELT MOULDING**
 - (a) Apply protective tape to the outer circumference of the rear door belt moulding.
 - (b) Using a moulding remover, disengage the 6 claws and remove the rear door belt moulding.



INSTALLATION

1. **INSTALL REAR DOOR BELT MOULDING**
 - (a) Engage the 6 claws and install a new front door belt moulding.
2. **INSTALL REAR DOOR TRIM PANEL ASSEMBLY (See page ED-81)**
3. **INSTALL REAR POWER WINDOW REGULATOR SWITCH ASSEMBLY (See page ED-81)**
4. **INSTALL REAR DOOR FRAME GARNISH (See page ED-81)**
5. **CONNECT CABLE TO NEGATIVE BATTERY TERMINAL**
Torque: 3.9 N*m (40 kgf*cm, 35 in.*lbf)