



THE ARIA REPORT



Chartifacts

Australian Top 100 Singles Chart

Australian Top 100 Albums Chart

Australian Top 100 Physical Singles Chart

Australian Top 100 Physical Albums Chart

Singles Summary

Albums Summary

Compilations Summary

Australian Artist Top 20 Charts

Digital Track Chart Top 50

Dance Top 25 Charts

Urban Singles Top 40

Urban Albums Top 40

Club Top 50 Chart

Hitseekers

Country Albums Chart

Classical Albums Chart

Jazz & Blues Albums Chart

Music DVD Chart

UK Top 20 Singles & Albums Charts (source: BPI)

US Top 20 Singles & Albums Charts (source: Billboard)

Europe Top 20 Singles & Albums Charts (source: Music & Media)

New Zealand Top 20 Singles & Albums Charts (source: RIANZ)

Australasian Artist – Overseas Chart Performance

New Release Singles

New Release Albums

New Release DVD

DISCLAIMER

© 1990 - 2009 Australian Recording Industry Association Ltd.

Strictly no reproduction, communication or other exploitation of the ARIA Report or its contents without written approval by ARIA.
To request permission to reprint, publish or otherwise utilise the ARIA Report or any ARIA Chart(s), please contact ARIA on (02) 8569 1144



CHARTIFACTS



Week Commencing - 27th April 2009 - Issue #1000

SINGLES. ARIA hits a milestone this week as we distribute our 1000th issue of the ARIA Report. The very first ARIA Report was issued on January 14th, 1990. The singles and albums charts were dominated by The B-52's *Love Shack* and *The Album* by The Jive Bunny And The Mastermixers respectively. All our subscribers that have been there since the inception of the ARIA Report would know that we used to send the report by post and we only started to email a version in late 2000. Nineteen years on, the only artists to have featured in the very first issue and this weeks issue are U2 with their single *All I Want Is You*, which was sitting at No.47 and their album, *Rattle And Hum* at No.41, Annie Lennox, who is one half of the Eurhythmics, with their album, *We Too Are One* at No.25 and Bob Dylan, who also features in both issues on the albums chart. Dylan was sitting at No.67 with *Oh Mercy*. This week the singles chart is ruled by Bollywood star A.R. Rahman featuring The Pussycat Dolls with *Jai Ho! (You Are My Destiny)*. Rahman is the first Indian artist to have an ARIA No.1 Single. His track moves up three places to swipe first place from Flo Rida, who falls to No.3 this week with *Right Round*. Finally, on the news front *My People* by The Presets matches Sneaky Sound System's *I Love It* as the longest charting Australian single in history, with a whopping 72 weeks in the chart! Can they make chalk up an extra notch? Watch this space next week...

ARIA would like to thank all of subscribers that have been with us since the start and those who have joined us along the way. It has been our pleasure bringing you the ARIA Report every week! Here's to another thousand issues...

No.28 **BAD INFLUENCE** - P!nk. This popstastic singer has been belting out the tunes since her debut nine years ago. P!nk aka Alecia Moore is a two time Grammy Award winner and has dabbled on the silver screen with minor roles in the movies *Charlie's Angels: Full Throttle* and *Rollerball*. P!nk is also a campaigner for PETA, contributing her voice against the cruelty to animals. *Bad Influence* is the vivacious singer's nineteenth single release, all of which have charted within the Top 40. Thirteen of them have reached the Top 10 and three have conquered the ARIA Singles Chart by peaking at No.1 - *So What!* (Sep. '08), *Most Girl* (Oct. '00) and *Get The Party Started* (Dec. '01).

No.38 **KRAZY** - Pitbull Feat. Lil Jon. He is a Cuban-American rapper and makes his debut this week with *Krazy*. The rapper grew up on the works of Cuban poet Jose Marti and Miami hip-hop music. Pitbull is best known for his track *Culo*, although a club favourite, it failed to make an impact on the chart. Fans can find Pitbull featured on *2 Fast 2 Furious* and *Fast & Furious 4* soundtracks. The new single *Krazy* samples Federico Franchi's dance track, *Cream* and features Crunk music kingpin - Lil Jon.

No.54 **SUMMARIZE** - Little Birdy. Hailing from Perth, lead singer of Little Birdy - Katy Steele is the sister of Luke Steele, who fronts Sleepy Jackson and more recently Empire Of The Sun. Katy's distinctive vocals were recognized at Luke's 21st birthday party, which was also attended by Simon Leach - a friend of Luke's and also guitarist for Little Birdy. *Summarize* is the second track to be released off the band's newest album, *Confetti*. *Brother* debuted last week at No.90.

No.56 **WAKING UP IN VEGAS** - Katy Perry. She hit the airwaves and she liked it! Katy Perry made a cracker of a start to her career upon the release of her single, *I Kissed A Girl*. The song gained massive media exposure due to the nature of the title and lyrics, but this still did not wane fans. The single spent six consecutive weeks at No.1 last year and has since been accredited with double platinum sales. This was followed up with *Hot N Cold*, which hit No.4 in October 2008. Both singles were taken from Perry's debut album *One Of The Boys* (No.11 Oct. '08).

No.76 **I'M NOT ALONE** - Calvin Harris. Hand picked by Kylie Minogue to produce a couple of tracks for her *X* album, Calvin Harris contributed to *In My Arms* (No.35 May '08) and *Heart Beat Rock*. Harris, who gained notoriety through his Myspace page has toured with Groove Armada and Faithless and has graced the stage at the legendary *Glastonbury* music festival in the UK and *Good Vibrations* here in Australia. The twenty-five year old Scotsman has appeared on our chart twice with the single - *The Girls* (No.33 Aug. '07) and *Acceptable In The 80's* (No.97 Aug. '07). *I'm Not Alone* recently debuted at No.1 on the UK Charts. Did you know Harris declined an invitation to work with Lady GaGa because he did not like her music?

ALBUMS. As this is the second Irish artist to hit No.1 this year, 'the luck of the Irish' might not be just a saying! U2's *No Line On The Horizon* debuted at No.1 in March this year and now Ronan Keating's *Songs For My Mother* has debuted at No.1 which gives him a brand new chart peak for his career. With the finish of his Australian tour, Eric Hutchinson's *Sounds Like This* has taken a little jump from last week's debut at No.65 to No.42 this week. All other bullets in the albums chart this week are debuts - see below for more information...

No.1 **SONGS FOR MY MOTHER** - Ronan Keating. As the title suggests, Keating recorded this album with his mother in mind. The songs he chose were ones that he remembered his mother liking and listening to during his childhood. Sadly his mother passed away in 1998 and Keating set up The Marie Keating Foundation, which works with Cancer Research UK, in her memory. *Songs For My Mother* hit No.1 in both the UK and Ireland. Previous to this album, his chart peak was No.3 with the double platinum accredited *Destination* (June '02) then in chart order it's *Ronan* (No.5 Sep. '00) accredited triple platinum, *Bring You Home* (No.6 July '06) accredited platinum, *10 Years Of Hits* (No.13 Nov. '04) accredited platinum and *Turn It On* (No.26 Dec. '03) accredited gold.

No.9 **PASSIONE** - Paul Potts. Potts is continuing to prove he deserved to win *Britain's Got Talent* with his second album - *Passione*. His debut album, platinum accredited *One Chance*, was an international success peaking at No.1 here in September 2007 and sitting at the No.1 spot on the classical chart for an astonishing 12 weeks in a row since its debut - not bad for a former mobile phone salesman! *Passione* took Potts a year to record in Prague and Stockholm. He initially had 60 song choices when he was looking at options for the album. *Passione* has debuted at No.1 in New Zealand.

No.14 **SWOON** - Silversun Pickups. The Silversun Pickups is made up of Brian Aubert (vocals/guitar), Nikki Monninger (bass), Christopher Guanlao (drums), and Joe Lester (keyboards) who all hail from LA. This is their second album; the first was *Carnavas* which hit No.65 in September 2007.

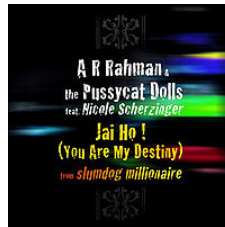
No.26 **MASTERPIECES** - Andre Rieu. It seems that Australia can not get enough of this Dutch! When he tours here with his *Johann Strauss Orchestra* they perform to sell-out crowds and his DVDs dominate our DVD chart. *Masterpieces* gives Rieu his fourth top 50 album; the first was *The 100 Most Beautiful Melodies* (No.2 Apr. '08) accredited gold, followed by *Waltzing Matilda* (No.1 May '08) platinum accredited and the last was *Live In Australia* (No.14 Dec. '08) accredited gold. *Masterpieces* features the *Maastricht Salon Orchestra* which was the ensemble which Rieu first formed when he started performing.

No.32 **SOUNDS OF THE UNIVERSE** - Depeche Mode. Depeche Mode have influenced many many bands and artists from many different genres including Radiohead, Pet Shop Boys, Linkin Park, The Crystal Method and Coldplay. *Sounds Of The Universe* will be supported by *The Tour Of The Universe*, which Aussie fans will be sad to hear will miss our sandy shores. Depeche Mode's chart history includes *'101'* (No.71 Apr. '89), *Violator* (No.42 Sep. '90), *Songs Of Faith and Devotion* (No.14 Apr. '93), *Ultra* (No.7 Apr. '97), *The Singles 86-98* (No.42 Oct. '98), *Exciter* (No.20 May '01) and *Playing The Angel* (No.45 Oct. '05).

No.34 **I LOVE THIS PLACE** - Troy Cassar-Daley. *I Love This Place* comes from a place of contentment for Cassar-Daley. At an age where most people go through a mid-life crisis, Cassar-Daley realized how satisfied he was with his life; happily married with two children with a farm just outside of Brisbane. He wanted to share this phase of his life, which is where *I Love This Place* came in. Cassar-Daley's chart history includes *True Believer* (No.53 Feb. '97), *Big River* (No.49 Sep. '99), *Long Way Home* (No.77 June '02), *Borrowed & Blue* (No.80 May '04), *Brighter Day* (No.46 Oct. '05) and *Born To Survive: The Best Of Troy Cassar-Daley* (No.18 July '07). *I Love This Place* debuted on the country chart at No.3 this week, and Cassar-Daley is about to embark on an Australian tour.

No.37 **FAST & FURIOUS 4** - Soundtrack. The latest chapter to the *Fast and the Furious* series has been described as an 'interquel'. Though it is the fourth movie, it actually fits in between the second and third movies in terms of the timeline. The first soundtrack *Fast & The Furious*, hit No.33 in November 2001 and was followed by *2 Fast 2 Furious* which peaked at No.25 in June 2003, while the third installment *Fast & The Furious (Tokyo Drift)* peaked at No.77 (June '06).

No.95 **TWO SUNS** - Bat For Lashes. This is Bat For Lashes debut to the ARIA chart. Her first album, *Fur And Gold*, failed to chart here though was nominated in the UK for the Mercury Music Prize. Natasha Khan is the solo artist behind Bat For Lashes. Born to a Pakistani father and English mother she spent some time growing up in Pakistan but now calls England home. Featured on this album are the talents of Yeasayer, Scott Walker and David Kosten.



#1 Single this week

ARIA Top 100 Singles - Week Commencing 27th April 2009

| TW | LW | TI | HP | TITLE Artist | Co. | Cat. No. |
|------|----|-----|----|---|----------|----------------|
| * 1 | 4 | 6 | 1 | JAI HO! (YOU ARE MY DESTINY) A.R. Rahman Feat. The Pussycat Dolls | INR/UMA | 00602527040578 |
| 2 | 2 | 16 | 1 | LOVE STORY Taylor Swift ▲ | UMA | 1799438 |
| 3 | 1 | 10 | 1 | RIGHT ROUND Flo Rida Feat. Ke\$ha ▲ | ATL/WAR | 7567896654 |
| 4 | 3 | 7 | 3 | DON'T TRUST ME 3OH!3 | ATL/WAR | 7567896623 |
| 5 | 5 | 13 | 3 | HALO Beyonce ▲ | COL/SME | 88697473502 |
| * 6 | 21 | 2 | 6 | WE MADE YOU Eminem | INR/UMA | 00602527047270 |
| 7 | 9 | 5 | 5 | LOVE SEX MAGIC Ciara Feat. Justin Timberlake | LAF/SME | 88697508652 |
| 8 | 7 | 7 | 4 | HEY BOYS AND GIRLS (TRUTH OF THE WORLD PT. 2) Evermore | WARNER | 5186531452 |
| 9 | 12 | 6 | 9 | LOVEGAME Lady GaGa | INR/UMA | 00602517990326 |
| 10 | 6 | 13 | 4 | DEAD AND GONE T.I. Feat. Justin Timberlake | ATL/WAR | 7567896689 |
| 11 | 11 | 4 | 10 | BOOM BOOM POW Black Eyed Peas | INR/UMA | 00602527026220 |
| 12 | 8 | 20 | 8 | MY DELIRIUM Ladyhawke ● | MOD/UMA | 00602517956926 |
| 13 | 13 | 6 | 12 | BEEN WAITING Jessica Mauboy | SME | 88697491362 |
| 14 | 16 | 15 | 9 | ROCK & ROLL Eric Hutchinson | WARNER | A10302B0000525 |
| 15 | 15 | 12 | 14 | BEAUTIFUL Akon Feat. Colby O'Donis & Kardinal Offishall | UNI/UMA | 00602517994539 |
| * 16 | 27 | 3 | 16 | THE CLIMB Miley Cyrus | WALT/UMA | 00050087143664 |
| 17 | 10 | 22 | 3 | GIVES YOU HELL The All-American Rejects ▲ | INR/UMA | 1797000 |
| 18 | 23 | 5 | 18 | BREAKEVEN The Script | RCA/SME | 88697441432 |
| 19 | 22 | 4 | 19 | NOT FAIR Lily Allen | CAP/EMI | EMIDD0948903 |
| 20 | 14 | 19 | 3 | THE FEAR Lily Allen ▲ | CAP/EMI | 6944752 |
| 21 | 19 | 8 | 14 | FEELS LIKE WOAHH Wes Carr | SME | 88697509612 |
| 22 | 26 | 4 | 22 | DAY N NITE (CROOKERS REMIX) Kid Cudi | UMA | 00602527035543 |
| 23 | 18 | 11 | 11 | IF U SEEK AMY Britney Spears | JVE/SME | 88697487822 |
| 24 | 17 | 20 | 1 | YOU FOUND ME The Fray ▲ | EPI/SME | 88697453612 |
| * 25 | 79 | 6 | 25 | I'M ON A BOAT The Lonely Island | UNI/UMA | 00602517990081 |
| 26 | 20 | 14 | 5 | MY LIFE WOULD SUCK WITHOUT YOU Kelly Clarkson ▲ | RCA/SME | 88697463372 |
| * 27 | 35 | 5 | 22 | I'D COME FOR YOU Nickelback | RR/WAR | RR38243 |
| * 28 | - | NEW | 28 | BAD INFLUENCE P!nk | SME | G010001725112Z |
| 29 | 36 | 5 | 29 | KISS ME THRU THE PHONE Soulja Boy Tell'em Feat. Sammie | INR/UMA | 00602517965690 |
| 30 | 25 | 31 | 1 | POKER FACE Lady GaGa ▲ 3 | INR/UMA | 1789813 |
| 31 | 29 | 8 | 23 | F**K YOU Lily Allen | CAP/EMI | EMIDD0951136 |
| 32 | 24 | 11 | 10 | JIZZ IN MY PANTS The Lonely Island | UNI/UMA | 00602517969063 |
| 33 | 28 | 15 | 11 | PLEASE DON'T LEAVE ME P!nk ● | LAF/SME | 88697471622 |
| * 34 | 49 | 49 | 3 | I'M YOURS Jason Mraz ● | ATL/WAR | 00100000500833 |
| 35 | 38 | 14 | 21 | REVELRY Kings Of Leon | RCA/SME | 88697464632 |
| 36 | 34 | 23 | 5 | SINGLE LADIES (PUT A RING ON IT) Beyonce ▲ 2 | COL/SME | 88697417512 |
| 37 | 33 | 16 | 24 | WE ARE THE PEOPLE Empire Of The Sun | CAP/EMI | 2435772 |
| * 38 | - | NEW | 38 | KRAZY Pitbull Feat. Lil Jon | INR/UMA | USUM70957024 |
| 39 | 31 | 26 | 2 | GET SHAKY The Ian Carey Project ▲ | VIC/UMA | ZIP049CD |
| 40 | 39 | 37 | 1 | SEX ON FIRE Kings Of Leon ▲ 3 | RCA/SME | 88697352002 |
| 41 | 37 | 12 | 18 | CRACK A BOTTLE Eminem Feat. Dr. Dre & 50 Cent | INR/UMA | 00602517997585 |
| 42 | 44 | 6 | 34 | NO YOU GIRLS Franz Ferdinand | SME | 00884977104776 |
| 43 | 30 | 29 | 3 | LET IT ROCK Kevin Rudolf Feat. Lil Wayne ▲ | UNI/UMA | 1788424 |
| 44 | 32 | 15 | 7 | SOMEDAY SOON Natalie Bassingthwaighte ● | SME | 88697444502 |
| 45 | 47 | 8 | 40 | DIVA Beyonce | SME | 00888880962171 |
| 46 | 40 | 31 | 2 | USE SOMEBODY Kings Of Leon ▲ 2 | RCA/SME | 88697412182 |
| 47 | 41 | 22 | 1 | BURN Jessica Mauboy ▲ | SME | 88697436282 |
| 48 | 42 | 6 | 42 | WELCOME TO THE WORLD Kevin Rudolf Feat. Kid Cudi | UNI/UMA | 00602527022574 |
| 49 | 50 | 45 | 2 | VIVA LA VIDA Coldplay ▲ | EMI | EMIDD0856865 |
| 50 | 45 | 18 | 15 | EH, EH (NOTHING ELSE I CAN SAY) Lady GaGa ● | INR/UMA | 1797568 |

| TW | LW | TI | HP | TITLE Artist | Co. | Cat. No. |
|--------------------------------------|----|-----|----|--|----------|----------------|
| 51 | 48 | 8 | 11 | PRINCESS Short Stack | SMR/UMA | SMR0009 |
| 52 | 46 | 10 | 17 | BOTTLE POP Pussycat Dolls Feat. Snoop Dogg | INR/UMA | 1798900 |
| 53 | 71 | 3 | 53 | MANHATTAN Kings Of Leon | SME | G010001677935L |
| * 54 | - | NEW | 54 | SUMMARIZE Little Birdy | ELEV/UMA | ELEVENCD85 |
| 55 | 55 | 36 | 1 | SO WHAT P!nk ▲ 2 | LAF/SME | 88697372772 |
| * 56 | - | NEW | 56 | WAKING UP IN VEGAS Katy Perry | CAP/EMI | EMIDD0874283 |
| 57 | 51 | 34 | 10 | WALKING ON A DREAM Empire Of The Sun ▲ | CAP/EMI | 2349372 |
| 58 | 59 | 23 | 12 | DECODE Paramore | ATL/WAR | A10302B0000725 |
| 59 | 43 | 13 | 11 | LIKE IT LOUD Cassie Davis ● | SME | 88697444512 |
| 60 | 52 | 21 | 6 | CIRCUS Britney Spears ▲ | JVE/SME | 88697455282 |
| 61 | 53 | 35 | 4 | HOT N COLD Katy Perry ▲ | CAP/EMI | 05099926765655 |
| 62 | 61 | 2 | 61 | I DO NOT HOOK UP Kelly Clarkson | RCA/SME | 88697524502 |
| 63 | 57 | 14 | 34 | THINKING OF YOU Katy Perry | CAP/EMI | 6945262 |
| 64 | 64 | 43 | 1 | JUST DANCE Lady GaGa Feat. Colby O'Donis ▲ 3 | INR/UMA | 1779103 |
| 65 | 66 | 8 | 65 | IF I KNOW YOU The Presets | MOD/UMA | 00602527017716 |
| 66 | 56 | 53 | 26 | MERCY Duffy ● | PDR/UMA | 1764278 |
| 67 | 65 | 25 | 14 | GOTTA BE SOMEBODY Nickelback ▲ | RR/WAR | RR38332 |
| 68 | 58 | 30 | 17 | RIGHT NOW (NA NA NA) Akon ● | UNI/UMA | 1789712 |
| 69 | 54 | 65 | 1 | LOW Flo Rida Feat. T-Pain ▲ 2 | ATL/WAR | 7567899473 |
| 70 | 72 | 26 | 6 | SOBER P!nk ▲ | LAF/SME | 88697425072 |
| 71 | 62 | 14 | 7 | EVERYBODY'S FREE Global DeeJays Feat. Rozalla | ONE/SME | OMG011 |
| 72 | 63 | 8 | 55 | RAIN ON YOUR PARADE Duffy | PDR/UMA | 00602517924406 |
| 73 | 70 | 12 | 47 | NEVER MISS A BEAT Kaiser Chiefs | LIB/UMA | LIB57CD |
| 74 | 68 | 28 | 3 | LIVE YOUR LIFE T.I. Feat. Rihanna | ATL/WAR | 7567896970 |
| 75 | 60 | 22 | 1 | YOU Wes Carr ▲ | SME | 88697436702 |
| 76 | - | NEW | 76 | I'M NOT ALONE Calvin Harris | SME | 00884977087253 |
| 77 | 88 | 40 | 1 | ALL SUMMER LONG Kid Rock ▲ | ATL/WAR | 7567898870 |
| 78 | 69 | 26 | 19 | FALL FOR YOU Secondhand Serenade ● | LIB/UMA | LIB63CD |
| 79 | 87 | 41 | 7 | ELECTRIC FEEL MGMT ▲ | EPI/SME | 88697236492 |
| 80 | 77 | 18 | 26 | FREEZE T-Pain Feat. Chris Brown | JVE/SME | 88697434952 |
| 81 | 84 | 36 | 19 | TALK LIKE THAT The Presets ● | MOD/UMA | MODCDS060 |
| 82 | 73 | 3 | 73 | SO HUMAN Lady Sovereign | LIB/UMA | 09341004004160 |
| 83 | 80 | 37 | 21 | KIDS MGMT ● | COL/SME | 88697387482 |
| 84 | 85 | 14 | 41 | WHITE HORSE Taylor Swift | UMA | USCJY0803264 |
| 85 | 82 | 6 | 82 | MAD Ne-Yo | DFJ/UMA | 00602517956629 |
| 86 | 75 | 12 | 57 | CRACK THE SHUTTERS Snow Patrol | PDR/UMA | 00602517952645 |
| 87 | 74 | 27 | 8 | ALIVE Natalie Bassingthwaighte ▲ | SME | 88697420212 |
| 88 | 89 | 28 | 5 | WOMANIZER Britney Spears ▲ | JVE/SME | 88697409442 |
| 89 | 76 | 19 | 26 | AMERICA'S SUITEHEARTS Fall Out Boy | ISL/UMA | 1796523 |
| 90 | 83 | 30 | 28 | HUMAN The Killers | ISL/UMA | 00602517919068 |
| 91 | 93 | 27 | 3 | IF I WERE A BOY Beyonce | SME | 00888880731005 |
| 92 | 95 | 30 | 13 | WHATEVER YOU LIKE T.I. | ATL/WAR | A10302B0000648 |
| 93 | - | R/E | 19 | IN THE AYER Flo Rida Feat. Will.I.Am | ATL/WAR | 7567897035 |
| 94 | 96 | 21 | 62 | SPACEMAN The Killers | ISL/UMA | 00602517925892 |
| 95 | 86 | 22 | 40 | HEARTLESS Kanye West | DFJ/UMA | USUM70840511 |
| 96 | 94 | 40 | 8 | THAT'S NOT MY NAME The Ting Tings ▲ | COL/SME | 88697374682 |
| 97 | 78 | 16 | 36 | ADDICTED Saving Abel | VIR/EMI | 6940852 |
| 98 | 98 | 30 | 3 | RUNNING BACK Jessica Mauboy Feat. Flo Rida ▲ 2 | SME | 88697411792 |
| 99 | - | R/E | 88 | ZERO Yeah Yeah Yeahs | MOD/UMA | 00602527009537 |
| 100 | 99 | 73 | 14 | MY PEOPLE The Presets ▲ | MOD/UMA | 1760932 |
| These were in the top 100 last week: | | | | | | |
| 67 | 3 | 52 | | MORE THAN THIS Missy Higgins | ELEV/UMA | 00602527037257 |
| 81 | 2 | 80 | | RETURN THE FAVOR Keri Hilson Feat. Timbaland | INR/UMA | 00602517923812 |
| 90 | 1 | 90 | | BROTHER Little Birdy | ELEV/UMA | 00602527038704 |
| 91 | 41 | 2 | | SHAKE IT Metro Station ▲ 2 | COL/SME | 88697363472 |
| 92 | 1 | 92 | | DAY N NITE (ORIGINAL EXPLICIT) Kid Cudi | UMA | 00602527032252 |
| 97 | 1 | 97 | | TONIGHT Jonas Brothers | HWR/UMA | 00050087139452 |
| 100 | 1 | 100 | | YOU MAKE IT REAL James Morrison | PDR/UMA | 1784412 |



#1 Album this week

ARIA Top 100 Albums - Week Commencing 27th April 2009

| TW | LW | TI | HP | TITLE Artist | Co. | Cat. No. |
|------|----|-----|----|---|----------|---------------|
| * 1 | - | NEW | 1 | SONGS FOR MY MOTHER Ronan Keating | PDR/UMA | 2704838 |
| 2 | 1 | 11 | 1 | IT'S NOT ME, IT'S YOU Lily Allen ▲ | CAP/EMI | 6942772 |
| 3 | 4 | 4 | 3 | THE BOAT THAT ROCKED Soundtrack | MER/UMA | 2701298 |
| 4 | 2 | 23 | 2 | FEARLESS Taylor Swift ▲ | UMA | 1799119 |
| 5 | 5 | 32 | 1 | ONLY BY THE NIGHT Kings Of Leon ▲ 8 | RCA/SME | 88697425462 |
| 6 | 3 | 3 | 3 | DEFYING GRAVITY Keith Urban ● | CPT/EMI | 2357512 |
| 7 | 10 | 23 | 3 | TWILIGHT Soundtrack ● | ATL/WAR | 7567896656 |
| 8 | 8 | 26 | 1 | FUNHOUSE P!nk ▲ 7 | LAF/SME | 88697406492 |
| * 9 | - | NEW | 9 | PASSIONE Paul Potts | SME | 88697474392 |
| 10 | 9 | 23 | 8 | I AM... SASHA FIERCE Beyonce ▲ | COL/SME | 88697409802 |
| 11 | 6 | 3 | 6 | R.O.O.T.S. (ROUTE OF OVERCOMING THE STRUGGLE) Flo Rida | ATL/WAR | 7567896624 |
| 12 | 7 | 56 | 6 | ROCKFERRY Duffy ▲ | PDR/UMA | 1799117 |
| 13 | 13 | 33 | 4 | THE FAME Lady GaGa ▲ 2 | INR/UMA | 1791397 |
| * 14 | - | NEW | 14 | SWOON Silversun Pickups | WARNER | 9362497810 |
| 15 | 12 | 3 | 8 | IT'S BLITZ! Yeah Yeah Yeahs | MOD/UMA | MODCD107 |
| 16 | 11 | 5 | 2 | THE WAY THE WORLD LOOKS Wes Carr ● | SME | 88697501492 |
| 17 | 14 | 4 | 14 | QUIET NIGHTS Diana Krall | VE/UMA | 1793110 |
| 18 | 19 | 49 | 3 | WE SING. WE DANCE. WE STEAL THINGS. Jason Mraz ▲ 2 | WARNER | 7567897009 |
| 19 | 15 | 29 | 6 | WALKING ON A DREAM Empire Of The Sun ▲ | CAP/EMI | 2354032 |
| 20 | 22 | 22 | 11 | BEEN WAITING Jessica Mauboy ▲ | SME | 88697431782 |
| 21 | 21 | 23 | 3 | DARK HORSE Nickelback ▲ 2 | RR/WAR | RR80282 |
| 22 | 20 | 7 | 2 | ALL I EVER WANTED Kelly Clarkson ● | RCA/SME | 88697327152 |
| 23 | 18 | 8 | 1 | NO LINE ON THE HORIZON U2 ▲ | MER/UMA | 1797605 |
| 24 | 16 | 45 | 1 | VIVA LA VIDA Coldplay ▲ 3 | CAP/EMI | 2660462 |
| 25 | 27 | 26 | 16 | LADYHAWKE Ladyhawke ● | MOD/UMA | MODCD106 |
| * 26 | - | NEW | 26 | MASTERPIECES Andre Rieu | UNI/UMA | 5318140 |
| 27 | 24 | 11 | 3 | THE FRAY The Fray ● | EPI/SME | 88697453652 |
| 28 | 23 | 4 | 17 | THE ANNIE LENNOX COLLECTION Annie Lennox | RCA/SME | 88697368082 |
| 29 | 29 | 9 | 3 | INVADERS MUST DIE The Prodigy ● | SHOCK | HOSPCD001X |
| 30 | 25 | 183 | 11 | TEN Pearl Jam ▲ 7 | EPI/SME | 468884.3 |
| 31 | 17 | 3 | 17 | I STARTED OUT WITH NOTHIN AND I STILL GOT MOST OF IT LEFT Seasick Steve | WEA/WAR | 2564694152 |
| * 32 | - | NEW | 32 | SOUNDS OF THE UNIVERSE Depeche Mode | MUTE/EMI | 6957762 |
| 33 | 26 | 9 | 1 | 1000 STARS Natalie Bassingthwaighte ● | SME | 88697461742 |
| * 34 | - | NEW | 34 | I LOVE THIS PLACE Troy Cassar-Daley | LIB/UMA | LMCD0046 |
| 35 | 28 | 54 | 1 | APOCALYPSO The Presets ▲ 2 | MOD/UMA | MODCD084 |
| 36 | 32 | 153 | 1 | I'M NOT DEAD P!nk ▲ 9 | LAF/SME | 82876804042 |
| * 37 | - | NEW | 37 | FAST & FURIOUS 4 Soundtrack | INR/UMA | 2702135 |
| 38 | 33 | 4 | 26 | LIVE IN LONDON Leonard Cohen | COL/SME | 88697405022 |
| 39 | 31 | 5 | 14 | TRUTH OF THE WORLD: WELCOME TO THE SHOW Evermore | WARNER | 5186531142 |
| 40 | 36 | 20 | 20 | FREEDOM Akon | UNI/UMA | 1793437 |
| 41 | 30 | 3 | 22 | GOODNIGHT, BULL CREEK! Bob Evans | CAP/EMI | 2682202 |
| * 42 | 65 | 2 | 42 | SOUNDS LIKE THIS Eric Hutchinson | WARNER | 9362498720 |
| 43 | 34 | 44 | 7 | ALRIGHT, STILL Lily Allen ▲ | CPT/EMI | 3717392 |
| 44 | 53 | 9 | 16 | YOU'LL NEVER WALK ALONE David Hobson & Teddy Tahu Rhodes | ACL/UMA | 4763284 |
| 45 | 54 | 4 | 45 | INCREDIBAD The Lonely Island | UNI/UMA | 1796904 |
| 46 | 37 | 15 | 37 | THE ESSENTIAL SIMON & GARFUNKEL Simon & Garfunkel ▲ | COL/SME | 5134702000 |
| 47 | 40 | 52 | 3 | GURRUMUL Geoffrey Gurrumul Yunupingu ▲ | SFM/MGM | SFGU080201USB |
| 48 | 38 | 15 | 9 | THE ESSENTIAL 3.0 Leonard Cohen ● | SME | 88697309962 |
| 49 | 35 | 86 | 4 | BECAUSE OF THE TIMES Kings Of Leon ▲ 2 | RCA/SME | 88697202092 |
| 50 | 46 | 96 | 14 | MISSUNDAZTOOD Pink ▲ 4 | ARI/SME | 07822148082 |

© 1990 - 2009 Australian Recording Industry Association Ltd.

Strictly no reproduction, communication or other exploitation of the ARIA Report or its contents without written approval by ARIA. To request permission to reprint, publish or otherwise utilise the ARIA Report or any ARIA Chart(s), please contact ARIA on (02) 8569 1144

| TW | LW | TI | HP | TITLE Artist | Co. | Cat. No. |
|--------------------------------------|-----|-----|----|--|----------|-------------|
| 51 | 42 | 74 | 25 | AHA SHAKE HEARTBREAK Kings Of Leon ▲ 2 | RCA/SME | 82876764102 |
| 52 | 43 | 61 | 12 | ESSENTIAL MICHAEL JACKSON Michael Jackson ▲ 2 | EPI/SME | 5204222000 |
| 53 | 60 | 23 | 10 | GOOD LOVIN' David Campbell ▲ | SME | 88697415732 |
| 54 | 44 | 38 | 11 | ONE OF THE BOYS Katy Perry ▲ | CAP/EMI | 5042492 |
| 55 | 72 | 31 | 4 | DOLL DOMINATION 2.0 Pussycat Dolls ● | INR/UMA | 2705553 |
| 56 | 75 | 12 | 12 | THE PRIESTS The Priests ● | EPI/SME | 88697339692 |
| 57 | 69 | 4 | 49 | SOME PEOPLE HAVE REAL PROBLEMS Sia | INERTIA | MPRCDAUS1 |
| 58 | 41 | 21 | 3 | CIRCUS Britney Spears ▲ | JVE/SME | 88697407762 |
| 59 | 45 | 21 | 7 | PACKED TO THE RAFTERS Soundtrack ▲ | WARNER | 5186516652 |
| 60 | 39 | 22 | 4 | DAY & AGE The Killers ▲ | ISL/UMA | 1785121 |
| 61 | 49 | 70 | 27 | CHRONICLE: THE 20 GREATEST HITS Creedence Clearwater Revival ● | CONC/UMA | 1800022 |
| 62 | 71 | 32 | 36 | THE ESSENTIAL BOB DYLAN Bob Dylan ▲ | COL/SME | 5031332000 |
| 63 | 52 | 29 | 23 | COWBOY TOWN Brooks & Dunn ● | ARI/SME | 88697507422 |
| 64 | 85 | 21 | 10 | A SYMPHONY OF HITS Human Nature ▲ | SME | 88697416852 |
| 65 | 47 | 27 | 1 | BLACK ICE AC/DC ▲ 5 | ALB/SME | 88697417452 |
| 66 | 73 | 2 | 66 | THE SCRIPT The Script | RCA/SME | 88697523182 |
| 67 | 76 | 14 | 32 | FOR EMMA, FOREVER AGO Bon Iver | INERTIA | JAG115LP |
| 68 | 56 | 15 | 36 | SLUMDOG MILLIONAIRE Soundtrack ● | INR/UMA | 1796388 |
| 69 | 70 | 48 | 8 | TRY THIS Pink ▲ | ARI/SME | 82876573782 |
| 70 | 50 | 33 | 5 | JUNO Soundtrack ● | RHI/WAR | 8122799408 |
| 71 | 59 | 30 | 16 | PAPER TRAIL T.I. ● | ATL/WAR | 7567898198 |
| 72 | 48 | 2 | 48 | FANTASIES Metric | INE | MET80019 |
| 73 | 64 | 192 | 1 | ABBA GOLD ABBA ▲ 11 | UMA | 9811975 |
| 74 | 51 | 3 | 34 | KINGDOM OF RUST Doves | VIR/EMI | 6931342 |
| 75 | 61 | 52 | 6 | ORACULAR SPECTACULAR MGMT ▲ | COL/SME | 88697195122 |
| 76 | 68 | 4 | 19 | CRACK THE SKYE Mastodon | RPS/WAR | 9362498722 |
| 77 | 63 | 13 | 6 | TONIGHT: FRANZ FERDINAND Franz Ferdinand | DOM/SME | 88697372552 |
| 78 | 57 | 4 | 25 | A WOMAN A MAN WALKED BY PJ Harvey & John Parish | ISL/UMA | 2700699 |
| 79 | 86 | 42 | 1 | MAMMA MIA! Soundtrack ▲ 2 | PDR/UMA | 1781552 |
| 80 | 67 | 3 | 45 | SMOKING GUN Lady Of The Sunshine | CAP/EMI | 6969422 |
| 81 | - | R/E | 1 | ONE CHANCE Paul Potts ▲ | SME | 88697215992 |
| 82 | 55 | 19 | 9 | FOLIE A DEUX Fall Out Boy ▲ | ISL/UMA | 1788721 |
| 83 | 82 | 158 | 1 | A RUSH OF BLOOD TO THE HEAD Coldplay ▲ 5 | CAP/EMI | 5405042 |
| 84 | 66 | 55 | 1 | HOW TO SAVE A LIFE The Fray ▲ | EPI/SME | 82876861432 |
| 85 | 62 | 207 | 2 | NEVERMIND Nirvana ▲ 5 | GEF/UMA | GEX24425 |
| 86 | 84 | 19 | 10 | THE BEST OF Radiohead | CAP/EMI | 2163042 |
| 87 | 87 | 39 | 46 | YOUTH & YOUNG MANHOOD Kings Of Leon ▲ 3 | RCA/SME | 82876523942 |
| 88 | 90 | 5 | 28 | JUNIOR Royksopp | VIR/EMI | 6962712 |
| 89 | 88 | 108 | 2 | PARACHUTES Coldplay ▲ 3 | EMI | 5350420 |
| 90 | - | R/E | 5 | THE PROMISE II Divo ▲ | SME | 88697424342 |
| 91 | 79 | 73 | 1 | GREATEST HITS Bruce Springsteen ▲ 9 | SME | 478555.8 |
| 92 | 77 | 117 | 1 | X & Y Coldplay ▲ 4 | EMI | 3639662 |
| 93 | 58 | 25 | 4 | HIGH SCHOOL MUSICAL 3: SENIOR YEAR Soundtrack ▲ | WALT/UMA | 2644242 |
| 94 | 80 | 26 | 6 | A HUNDRED MILLION SUNS Snow Patrol ● | PDR/UMA | 1785255 |
| 95 | - | NEW | 95 | TWO SUNS Bat For Lashes | SPU/EMI | 6957802 |
| 96 | 91 | 11 | 12 | OFF WITH THEIR HEADS Kaiser Chiefs | LIB/UMA | LIB59CD |
| 97 | - | R/E | 22 | SONGS FROM THE SOUTH VOLUME 1 & 2 Paul Kelly ● | CAP/EMI | 6985812 |
| 98 | 83 | 4 | 33 | CULT OF STATIC Static-X | RPS/WAR | 9362497923 |
| 99 | - | R/E | 1 | BREAKOUT Miley Cyrus ▲ | HWR/UMA | 2661362 |
| 100 | 93 | 8 | 8 | WRATH Lamb Of God | RR/WAR | RR78862 |
| These were in the top 100 last week: | | | | | | |
| 74 | 40 | 1 | | U218 SINGLES U2 ▲ 4 | ISL/UMA | 1713549 |
| 78 | 8 | 14 | | LIVE ON EARTH The Cat Empire | VIR/EMI | 6959412 |
| 81 | 7 | 11 | | MR LUCKY Chris Isaak | UMA | 1799498 |
| 89 | 152 | 6 | | GREATEST HITS Guns N' Roses ▲ 3 | GEF/UMA | 9862116 |
| 92 | 6 | 19 | | HELL OF A RIDE Adam Brand | CB/SHK | 064CDCB |
| 94 | 1 | 94 | | GRAVITY AT LAST Ayo | UNI/UMA | 5311204 |
| 95 | 1 | 95 | | GET ONBOARD Eric Bibb | ABC/UMA | 1790743 |
| 96 | 132 | 1 | | HOT FUSS The Killers ▲ 3 | ISL/UMA | 9883795 |
| 97 | 39 | 32 | | 18 HITS ABBA | UNI/UMA | 9848987 |
| 98 | 50 | 1 | | RATTLIN' BONES Kasey Chambers & Shane Nicholson ▲ | LIB/UMA | LMCD0005 |
| 99 | 27 | 3 | | CHIMNEY'S AFIRE Josh Pyke ● | IVY/UMA | IVY076 |
| 100 | 27 | 7 | | GREATEST HITS: 18 KIDS Keith Urban ▲ | CAP/EMI | 5155542 |



#1 Physical Single this week

ARIA Top 100 Physical Singles - Week Commencing 27th April 2009

| TW | LW | TI | HP | TITLE Artist | Co. | Cat. No. |
|------|----|-----|----|---|----------|-------------|
| 1 | 1 | 6 | 1 | RIGHT ROUND Flo Rida Feat. Ke\$ha | ATL/WAR | 7567896654 |
| 2 | 2 | 10 | 1 | LOVE STORY Taylor Swift | UMA | 1799438 |
| 3 | 3 | 9 | 2 | HALO Beyonce | COL/SME | 88697473502 |
| 4 | 4 | 7 | 4 | DEAD AND GONE T.I. Feat. Justin Timberlake | ATL/WAR | 7567896689 |
| 5 | 5 | 3 | 5 | LOVE SEX MAGIC Ciara Feat. Justin Timberlake | LAF/SME | 88697508652 |
| 6 | 6 | 6 | 5 | BEEN WAITING Jessica Mauboy | SME | 88697491362 |
| * 7 | 11 | 2 | 7 | DON'T TRUST ME 3OH!3 | ATL/WAR | 7567896623 |
| * 8 | - | NEW | 8 | I'D COME FOR YOU Nickelback | RR/WAR | RR38243 |
| 9 | 7 | 8 | 7 | FEELS LIKE WOAHH Wes Carr | SME | 88697509612 |
| * 10 | - | NEW | 10 | SUMMARIZE Little Birdy | ELEV/UMA | ELEVEND85 |
| 11 | 12 | 7 | 11 | BOTTLE POP Pussycat Dolls Feat. Snoop Dogg | INR/UMA | 1798900 |
| 12 | 9 | 6 | 8 | IF U SEEK AMY Britney Spears | JVE/SME | 88697487822 |
| 13 | 8 | 13 | 7 | GIVES YOU HELL The All-American Rejects | INR/UMA | 1797000 |
| 14 | 14 | 7 | 14 | HEY BOYS AND GIRLS (TRUTH OF THE WORLD PT. 2) Evermore | WARNER | 5186531452 |
| * 15 | 21 | 3 | 15 | BREAKEVEN The Script | RCA/SME | 88697441432 |
| 16 | 16 | 8 | 3 | PRINCESS Short Stack | SMR/UMA | SMR0009 |
| 17 | 10 | 12 | 1 | MY LIFE WOULD SUCK WITHOUT YOU Kelly Clarkson | RCA/SME | 88697463372 |
| 18 | 20 | 28 | 10 | TAME IMPALA (EP) Tame Impala | MOD/UMA | MODEP023 |
| 19 | 19 | 12 | 11 | THE FEAR Lily Allen | CAP/EMI | 6944752 |
| 20 | 15 | 13 | 8 | EH, EH (NOTHING ELSE I CAN SAY) Lady GaGa | INR/UMA | 1797568 |
| 21 | 17 | 12 | 6 | PLEASE DON'T LEAVE ME P!nk | LAF/SME | 88697471622 |
| 22 | 13 | 14 | 1 | YOU FOUND ME The Fray | EPI/SME | 88697453612 |
| 23 | 23 | 26 | 3 | GET SHAKY The Ian Carey Project | VIC/UMA | ZIP049CD |
| 24 | 18 | 9 | 1 | YOURS FOREVER Andre Rieu | UNI/UMA | 2701232 |
| 25 | 25 | 26 | 6 | LET IT ROCK Kevin Rudolf Feat. Lil Wayne | UNI/UMA | 1788424 |
| 26 | 24 | 9 | 13 | WE ARE THE PEOPLE Empire Of The Sun | CAP/EMI | 2435772 |
| 27 | 22 | 17 | 2 | SOMEDAY SOON Natalie Bassingthwaighte | SME | 88697444502 |
| 28 | 33 | 5 | 25 | BRUISED WATER Chicane vs. Natasha Bedingfield | CSR/UMA | DN0004 |
| 29 | 28 | 16 | 4 | SINGLE LADIES (PUT A RING ON IT) Beyonce | COL/SME | 88697417512 |
| 30 | 26 | 6 | 22 | THINKING OF YOU Katy Perry | CAP/EMI | 6945262 |
| 31 | 27 | 13 | 12 | BLOOD BANK Bon Iver | INERTIA | JAG134CD |
| 32 | 29 | 26 | 1 | POKER FACE Lady GaGa | INR/UMA | 1789813 |
| 33 | 34 | 10 | 25 | REVELRY Kings Of Leon | RCA/SME | 88697464632 |
| 34 | 30 | 22 | 2 | BURN Jessica Mauboy | SME | 88697436282 |
| 35 | 32 | 13 | 13 | LIKE IT LOUD Cassie Davis | SME | 88697444512 |
| 36 | 41 | 13 | 32 | SWEET DISPOSITION The Temper Trap | LIB/UMA | LMCD0023 |
| 37 | 36 | 12 | 18 | ADDICTED Saving Abel | VIR/EMI | 6940852 |
| 38 | 40 | 47 | 31 | WELCOME TO THE AFTERNOON Lisa Mitchell | WARNER | SCORP003 |
| 39 | 35 | 2 | 35 | WHEREVER Stafford Brothers vs. Hoxton Whores Feat. Frank Stafford | HUS/UMA | HUSSYCD5090 |
| * 40 | - | NEW | 40 | EVERYBODY Rudenko | HUS/UMA | HUSSYCD5091 |
| 41 | 37 | 15 | 3 | CIRCUS Britney Spears | JVE/SME | 88697455282 |
| 42 | 46 | 13 | 23 | AMERICA'S SUITEHEARTS Fall Out Boy | ISL/UMA | 1796523 |
| 43 | 47 | 30 | 6 | SHIMMY A GO GO Short Stack | SMR/UMA | SMR0001 |
| 44 | 31 | 25 | 6 | GOTTA BE SOMEBODY Nickelback | RR/WAR | RR38332 |
| 45 | 44 | 14 | 12 | ALL NIGHTMARE LONG Metallica | MER/UMA | 1794216 |
| 46 | 45 | 26 | 19 | RIGHT NOW (NA NA NA) Akon | UNI/UMA | 1789712 |
| 47 | 39 | 12 | 13 | EVERYBODY'S FREE Global Deejays Feat. Rozalla | ONE/SME | OMG011 |
| 48 | 42 | 21 | 1 | YOU Wes Carr | SME | 88697436702 |
| 49 | 52 | 24 | 3 | LIVE YOUR LIFE T.I. Feat. Rihanna | ATL/WAR | 7567896970 |
| 50 | 38 | 8 | 5 | I AM AUSTRALIAN Bruce Woodley, Claire Woodley and Carter & Carter | SME | 88697506102 |

| TW | LW | TI | HP | TITLE Artist | Co. | Cat. No. |
|--------------------------------------|----|-----|----|---|---------|-------------|
| 51 | 50 | 25 | 33 | NEXT IN LINE Dead Letter Circus | MGM | 3MASSIVE002 |
| 52 | 43 | 25 | 7 | I HATE THIS PART The Pussycat Dolls | INR/UMA | 1788460 |
| 53 | 48 | 23 | 8 | USE SOMEBODY Kings Of Leon | RCA/SME | 88697412182 |
| 54 | 55 | 7 | 47 | YOUR CALL Secondhand Serenade | LIB/UMA | LIB67CD |
| 55 | 51 | 9 | 37 | JUST LIKE ME Jamie Foxx Feat. T.I | J/SME | 88697473182 |
| 56 | 59 | 11 | 16 | 16 Sneaky Sound System | WHA/MGM | WHACK13 |
| 57 | 71 | 33 | 1 | SO WHAT P!nk | LAF/SME | 88697372772 |
| 58 | 60 | 9 | 54 | CAUGHT IN THE CROWD Kate Miller-Heidke | SME | 88697488872 |
| * 59 | 87 | 23 | 9 | SOBER P!nk | LAF/SME | 88697425072 |
| 60 | 57 | 4 | 45 | SERIO Lost Valentinos | ETC/UMA | ETCETCD5003 |
| 61 | 63 | 3 | 38 | WONDER Shelley Harland | ALB/SME | 88697466362 |
| 62 | 88 | 12 | 46 | HOMECOMING Hey Monday | COL/SME | 88697462852 |
| 63 | 53 | 33 | 2 | SEX ON FIRE Kings Of Leon | RCA/SME | 88697352002 |
| 64 | 66 | 24 | 55 | IN COLOUR The John Steel Singers | LEV/INE | LEVITY006 |
| * 65 | 95 | 23 | 44 | BRAVADO Miami Horror | VIR/EMI | 2649932 |
| 66 | 73 | 29 | 31 | ANOTHER WORLD Antony & The Johnsons | SPU/EMI | URA269 |
| 67 | 54 | 27 | 21 | WALKING ON A DREAM Empire Of The Sun | CAP/EMI | 2349372 |
| 68 | 75 | 28 | 16 | HAPPY BIRTHDAY Andre Rieu | UNI/UMA | 1781483 |
| 69 | 69 | 17 | 69 | INFINITE DEATH Thy Art Is Murder | STOMP | SAB015 |
| * 70 | - | NEW | 70 | FOOLISH tyDi Feat. Keshia | STOMP | GENNEXT014 |
| 71 | 67 | 19 | 40 | THAT BEEP Architecture In Helsinki | SHOCK | SY006 |
| 72 | 83 | 5 | 68 | FREAK TONIGHT Israel | MGM | NFIS0901 |
| 73 | 86 | 37 | 16 | WHEN WE WERE KIDS The Galvatrons | MSH/WAR | 5144271722 |
| 74 | 78 | 28 | 53 | THE DAY BEFORE... Snob Scilla | LIB/UMA | IVY070 |
| 75 | 49 | 13 | 36 | CAN'T HOLD BACK Kaz James Feat. Macy Gray | SME | 88697462972 |
| 76 | 56 | 28 | 2 | RUNNING BACK Jessica Mauboy Feat. Flo Rida | SME | 88697411792 |
| 77 | 72 | 10 | 45 | SILK SUITS Kram | ISL/UMA | 1799360 |
| 78 | 92 | 22 | 26 | SHUT UP AND LET ME GO The Ting Tings | RCA/SME | 88697328482 |
| 79 | - | NEW | 79 | HEART Bertie Blackman | MGM | F5BB08 |
| 80 | - | R/E | 9 | DECEMBER Juke Kartel | MGM | EMP010 |
| 81 | 61 | 26 | 4 | WOMANIZER Britney Spears | JVE/SME | 88697409442 |
| 82 | 82 | 25 | 20 | MISS INDEPENDENT Ne-Yo | DFJ/UMA | 1787389 |
| 83 | 80 | 9 | 51 | FAREWELL ROCKETSHIP Children Collide | UMA | 1797112 |
| 84 | - | R/E | 11 | I DON'T CARE Fall Out Boy | ISL/UMA | 1788723 |
| 85 | 97 | 26 | 24 | ANOTHER WAY TO DIE Jack White & Alicia Keys | J/SME | 88697413642 |
| 86 | 65 | 27 | 13 | FALL FOR YOU Secondhand Serenade | LIB/UMA | LIB63CD |
| 87 | - | R/E | 2 | SHAKE IT Metro Station | COL/SME | 88697363472 |
| 88 | 68 | 28 | 26 | PARIS IS BURNING Ladyhawke | MOD/UMA | MODCDS057 |
| 89 | 89 | 15 | 29 | FREEZE T-Pain Feat. Chris Brown | JVE/SME | 88697434952 |
| 90 | 81 | 25 | 6 | ALIVE Natalie Bassingthwaighe | SME | 88697420212 |
| 91 | 96 | 26 | 13 | SUPERHUMAN Chris Brown Feat. Keri Hilson | JVE/SME | 88697416742 |
| 92 | 85 | 26 | 24 | TAKE BACK THE CITY Snow Patrol | PDR/UMA | 1788001 |
| 93 | - | R/E | 27 | HYPNAGOGIC STATES EP The Cure | GEF/UMA | 1782688 |
| 94 | 58 | 23 | 35 | UNBREAKABLE Evermore | WEA/WAR | 5101187862 |
| 95 | 77 | 33 | 9 | DANCE WIV ME Dizzee Rascal Feat. Calvin Harris & Chrome | HUS/UMA | HUSSYCD5088 |
| 96 | - | R/E | 46 | WHEN WE WERE YOUNG Sneaky Sound System | WHA/MGM | WHACK10 |
| 97 | - | R/E | 19 | DANGEROUS Kardinal Offishall Feat. Akon | GEF/UMA | 1787528 |
| 98 | - | R/E | 34 | MOMENT IN THE SUN The Living End | DEW/UMA | DEW9000120 |
| 99 | 74 | 28 | 35 | SAVING GRACE Pete Murray | SME | 88697372252 |
| 100 | 90 | 29 | 30 | DONK Soulja Boy Tell 'Em | INR/UMA | 1785603 |
| These were in the top 100 last week: | | | | | | |
| 62 | 17 | 53 | | NEVER MISS A BEAT Kaiser Chiefs | LIB/UMA | LIB57CD |
| 64 | 22 | 22 | | KIDS MGMT | COL/SME | 88697387482 |
| 70 | 35 | 1 | | I CAN'T BREAK IT TO MY HEART Delta Goodrem | SME | 88697363632 |
| 76 | 31 | 2 | | PIECE OF ME Britney Spears | JVE/SME | 88697221782 |
| 79 | 21 | 3 | | WIGGLE IT Ricki-Lee | SHOCK | PUBLIC018 |
| 84 | 32 | 14 | | ELECTRIC FEEL MGMT | EPI/SME | 88697236492 |
| 91 | 32 | 5 | | 7 THINGS Miley Cyrus | HWR/UMA | 8712422 |
| 93 | 19 | 32 | | SEVENTEEN FOREVER Metro Station | COL/SME | 88697439222 |
| 94 | 9 | 25 | | YOU GET ME Sinead Burgess | ABC/UMA | 1795234 |
| 98 | 17 | 41 | | EVERYTHING P-Money | DES/SME | GRINDCD5001 |
| 99 | 1 | 99 | | MY FIRST EP (FEATURING PIECES OF YOU) Ashleigh Mannix | MGM | MANNIX001 |
| 100 | 11 | 43 | | ENERGY Keri Hilson | INR/UMA | 1782304 |



#1 Physical Single this week

ARIA Top 100 Physical Albums - Week Commencing 27th April 2009

| TW | LW | TI | HP | TITLE Artist | Co. | Cat. No. |
|------|----|-----|----|---|----------|-------------|
| * 1 | - | NEW | 1 | SONGS FOR MY MOTHER Ronan Keating | PDR/UMA | 2704838 |
| 2 | 2 | 11 | 1 | IT'S NOT ME, IT'S YOU Lily Allen ▲ | CAP/EMI | 6942772 |
| 3 | 5 | 4 | 3 | THE BOAT THAT ROCKED Soundtrack | MER/UMA | 2701298 |
| 4 | 1 | 23 | 1 | FEARLESS Taylor Swift ▲ | UMA | 1799119 |
| 5 | 4 | 32 | 1 | ONLY BY THE NIGHT Kings Of Leon ▲ 8 | RCA/SME | 88697425462 |
| 6 | 3 | 3 | 3 | DEFYING GRAVITY Keith Urban ● | CPT/EMI | 2357512 |
| * 7 | 11 | 23 | 3 | TWILIGHT Soundtrack ● | ATL/WAR | 7567896656 |
| * 8 | - | NEW | 8 | PASSIONE Paul Potts | SME | 88697474392 |
| 9 | 7 | 26 | 1 | FUNHOUSE P!nk ▲ 7 | LAF/SME | 88697406492 |
| 10 | 6 | 3 | 6 | R.O.O.T.S. (ROUTE OF OVERCOMING THE STRUGGLE) Flo Rida | ATL/WAR | 7567896624 |
| 11 | 9 | 23 | 8 | I AM... SASHA FIERCE Beyonce ▲ | COL/SME | 88697409802 |
| 12 | 8 | 56 | 6 | ROCKFERRY Duffy ▲ | PDR/UMA | 1799117 |
| 13 | 12 | 33 | 4 | THE FAME Lady GaGa ▲ 2 | INR/UMA | 1791397 |
| 14 | 10 | 5 | 2 | THE WAY THE WORLD LOOKS Wes Carr ● | SME | 88697501492 |
| 15 | 13 | 3 | 9 | IT'S BLITZ! Yeah Yeah Yeahs | MOD/UMA | MODCD107 |
| 16 | 14 | 4 | 14 | QUIET NIGHTS Diana Krall | VE/UMA | 1793110 |
| 17 | 16 | 49 | 3 | WE SING. WE DANCE. WE STEAL THINGS. Jason Mraz ▲ 2 | WARNER | 7567897009 |
| * 18 | - | NEW | 18 | SWOON Silversun Pickups | WARNER | 9362497810 |
| 19 | 15 | 29 | 6 | WALKING ON A DREAM Empire Of The Sun ▲ | CAP/EMI | 2354032 |
| 20 | 21 | 22 | 11 | BEEN WAITING Jessica Mauboy ▲ | SME | 88697431782 |
| 21 | 20 | 23 | 3 | DARK HORSE Nickelback ▲ 2 | RR/WAR | RR80282 |
| 22 | 19 | 7 | 2 | ALL I EVER WANTED Kelly Clarkson ● | RCA/SME | 88697327152 |
| 23 | 17 | 8 | 1 | NO LINE ON THE HORIZON U2 ▲ | MER/UMA | 1797605 |
| * 24 | - | NEW | 24 | MASTERPIECES Andre Rieu | UNI/UMA | 5318140 |
| 25 | 18 | 45 | 1 | VIVA LA VIDA Coldplay ▲ 3 | CAP/EMI | 2660462 |
| 26 | 23 | 4 | 19 | THE ANNIE LENNOX COLLECTION Annie Lennox | RCA/SME | 88697368082 |
| 27 | 24 | 11 | 4 | THE FRAY The Fray ● | EPI/SME | 88697453652 |
| 28 | 25 | 183 | 11 | TEN Pearl Jam ▲ 7 | EPI/SME | 88697375872 |
| 29 | 29 | 23 | 16 | LADYHAWKE Ladyhawke ● | MOD/UMA | MODCD106 |
| 30 | 28 | 9 | 4 | INVADERS MUST DIE The Prodigy ● | SHOCK | HOSPCD001X |
| 31 | 26 | 9 | 1 | 1000 STARS Natalie Bassingthwaighte ● | SME | 88697461742 |
| 32 | 22 | 3 | 22 | I STARTED OUT WITH NOTHIN AND I STILL GOT MOST OF IT LEFT Seasick Steve | WEA/WAR | 2564694152 |
| * 33 | - | NEW | 33 | I LOVE THIS PLACE Troy Cassar-Daley | LIB/UMA | LMCD0046 |
| 34 | 30 | 152 | 1 | I'M NOT DEAD P!nk ▲ 9 | LAF/SME | 88697075172 |
| 35 | 27 | 54 | 1 | APOCALYPSO The Presets ▲ 2 | MOD/UMA | MODCD084 |
| * 36 | - | NEW | 36 | SOUNDS OF THE UNIVERSE Depeche Mode | MUTE/EMI | 6957762 |
| 37 | 33 | 4 | 25 | LIVE IN LONDON Leonard Cohen | COL/SME | 88697405022 |
| 38 | 31 | 5 | 15 | TRUTH OF THE WORLD: WELCOME TO THE SHOW Evermore | WARNER | 5186531142 |
| 39 | 37 | 20 | 19 | FREEDOM Akon | UNI/UMA | 1793437 |
| 40 | 32 | 3 | 24 | GOODNIGHT, BULL CREEK! Bob Evans | CAP/EMI | 2682202 |
| 41 | 50 | 9 | 11 | YOU'LL NEVER WALK ALONE David Hobson & Teddy Tahu Rhodes | ACL/UMA | 4763284 |
| 42 | 36 | 16 | 8 | THE ESSENTIAL 3.0 Leonard Cohen ● | SME | 88697309962 |
| * 43 | - | NEW | 43 | FAST & FURIOUS 4 Soundtrack | INR/UMA | 2702135 |
| * 44 | 64 | 2 | 44 | SOUNDS LIKE THIS Eric Hutchinson | WARNER | 9362498720 |
| 45 | 46 | 96 | 14 | MISSUNDAZTOOD Pink ▲ 4 | ARI/SME | 74321913242 |
| 46 | 40 | 51 | 4 | GURRUMUL Geoffrey Gurrumul Yunupingu ▲ | SFM/MGM | SFGU080201 |
| 47 | 35 | 44 | 7 | ALRIGHT, STILL Lily Allen ▲ | CPT/EMI | 3717392 |
| 48 | 38 | 74 | 24 | AHA SHAKE HEARTBREAK Kings Of Leon ▲ 2 | RCA/SME | 82876764102 |
| 49 | 34 | 86 | 4 | BECAUSE OF THE TIMES Kings Of Leon ▲ 2 | RCA/SME | 88697202092 |
| 50 | 39 | 61 | 12 | ESSENTIAL MICHAEL JACKSON Michael Jackson ▲ 2 | EPI/SME | 5204222000 |

© 1990 - 2009 Australian Recording Industry Association Ltd.

Strictly no reproduction, communication or other exploitation of the ARIA Report or its contents without written approval by ARIA. To request permission to reprint, publish or otherwise utilise the ARIA Report or any ARIA Chart(s), please contact ARIA on (02) 8569 1144

| TW | LW | TI | HP | TITLE Artist | Co. | Cat. No. |
|--------------------------------------|-----|-----|----|--|----------|-------------|
| 51 | 55 | 23 | 9 | GOOD LOVIN' David Campbell ▲ | SME | 88697415732 |
| 52 | 41 | 38 | 10 | ONE OF THE BOYS Katy Perry ▲ | CAP/EMI | 5042492 |
| 53 | 43 | 15 | 41 | THE ESSENTIAL SIMON & GARFUNKEL Simon & Garfunkel ▲ | COL/SME | 5134702000 |
| 54 | 69 | 12 | 11 | THE PRIESTS The Priests ● | EPI/SME | 88697339692 |
| 55 | 65 | 31 | 4 | DOLL DOMINATION 2.0 Pussycat Dolls ● | INR/UMA | 2705553 |
| 56 | 66 | 4 | 56 | INCREDIBAD The Lonely Island | UNI/UMA | 1796904 |
| 57 | 42 | 21 | 3 | CIRCUS Britney Spears ▲ | JVE/SME | 88697407762 |
| 58 | 45 | 21 | 7 | PACKED TO THE RAFTERS Soundtrack ▲ | WARNER | 5186516652 |
| 59 | 44 | 22 | 4 | DAY & AGE The Killers ▲ | ISL/UMA | 1785121 |
| 60 | 58 | 32 | 36 | THE ESSENTIAL BOB DYLAN Bob Dylan ▲ | COL/SME | 5031332000 |
| 61 | 48 | 29 | 21 | COWBOY TOWN Brooks & Dunn ● | ARI/SME | 88697507422 |
| 62 | 47 | 27 | 1 | BLACK ICE AC/DC ▲ 5 | ALB/SME | 88697417452 |
| 63 | 51 | 65 | 26 | CHRONICLE: THE 20 GREATEST HITS Creedence Clearwater Revival ● | CONC/UMA | 1800022 |
| 64 | 80 | 21 | 10 | A SYMPHONY OF HITS Human Nature ▲ | SME | 88697416852 |
| 65 | 88 | 4 | 65 | SOME PEOPLE HAVE REAL PROBLEMS Sia | INERTIA | MPRCDAUS1 |
| 66 | 62 | 50 | 8 | TRY THIS Pink ▲ | ARI/SME | 82876573782 |
| 67 | 49 | 31 | 6 | JUNO Soundtrack ● | RHI/WAR | 8122799408 |
| 68 | 53 | 30 | 17 | PAPER TRAIL T.I. ● | ATL/WAR | 7567898198 |
| 69 | 82 | 14 | 36 | FOR EMMA, FOREVER AGO Bon Iver | INERTIA | JAG115LP |
| 70 | 57 | 4 | 18 | CRACK THE SKYE Mastodon | RPS/WAR | 9362498722 |
| 71 | 52 | 4 | 26 | A WOMAN A MAN WALKED BY PJ Harvey & John Parish | ISL/UMA | 2700699 |
| 72 | 56 | 3 | 44 | KINGDOM OF RUST Doves | VIR/EMI | 6931342 |
| 73 | 72 | 14 | 41 | SLUMDOG MILLIONAIRE Soundtrack ● | INR/UMA | 1796388 |
| 74 | 60 | 52 | 6 | ORACULAR SPECTACULAR MGMT ▲ | COL/SME | 88697195122 |
| 75 | 75 | 40 | 42 | YOUTH & YOUNG MANHOOD Kings Of Leon ▲ 3 | RCA/SME | 82876523942 |
| 76 | 59 | 3 | 50 | SMOKING GUN Lady Of The Sunshine | CAP/EMI | 6969422 |
| 77 | 63 | 13 | 6 | TONIGHT: FRANZ FERDINAND Franz Ferdinand | DOM/SME | 88697372552 |
| 78 | 83 | 157 | 1 | A RUSH OF BLOOD TO THE HEAD Coldplay ▲ 5 | CAP/EMI | 5405042 |
| 79 | 91 | 42 | 1 | MAMMA MIA! Soundtrack ▲ 2 | PDR/UMA | 1781552 |
| 80 | 61 | 2 | 61 | FANTASIES Metric | INE | MET80019 |
| 81 | 79 | 20 | 9 | THE BEST OF Radiohead | CAP/EMI | 2163042 |
| 82 | 74 | 192 | 1 | ABBA GOLD ABBA ▲ 11 | UMA | 1724732 |
| 83 | 54 | 19 | 9 | FOLIE A DEUX Fall Out Boy ▲ | ISL/UMA | 1788721 |
| 84 | 73 | 56 | 1 | HOW TO SAVE A LIFE The Fray ▲ | EPI/SME | 82876861432 |
| 85 | 71 | 73 | 1 | GREATEST HITS Bruce Springsteen ▲ 9 | SME | 88697046452 |
| 86 | 67 | 116 | 1 | X & Y Coldplay ▲ 4 | EMI | 3112802 |
| 87 | 81 | 108 | 2 | PARACHUTES Coldplay ▲ 3 | EMI | 5277832 |
| 88 | 78 | 207 | 2 | NEVERMIND Nirvana ▲ 5 | GEF/UMA | DGCD24425 |
| 89 | - | R/E | 1 | ONE CHANCE Paul Potts ▲ | SME | 88697215992 |
| 90 | - | R/E | 5 | THE PROMISE II Divo ▲ | SME | 88697424342 |
| 91 | 76 | 4 | 29 | CULT OF STATIC Static-X | RPS/WAR | 9362497923 |
| 92 | 94 | 5 | 30 | JUNIOR Royksopp | VIR/EMI | 6962712 |
| 93 | 85 | 8 | 7 | WRATH Lamb Of God | RR/WAR | RR78862 |
| 94 | 77 | 9 | 14 | LIVE ON EARTH The Cat Empire | VIR/EMI | 6959412 |
| 95 | - | R/E | 23 | SONGS FROM THE SOUTH VOLUME 1 & 2 Paul Kelly ● | CAP/EMI | 6985812 |
| 96 | 89 | 42 | 31 | 18 HITS ABBA | UNI/UMA | 9848987 |
| 97 | 84 | 26 | 6 | A HUNDRED MILLION SUNS Snow Patrol ● | PDR/UMA | 1785255 |
| 98 | - | R/E | 1 | BREAKOUT Miley Cyrus ▲ | HWR/UMA | 8713308 |
| 99 | - | NEW | 99 | THE SCRIPT The Script | RCA/SME | 88697523182 |
| 100 | - | R/E | 10 | CAN'T TAKE ME HOME Pink ▲ 2 | LAF/SME | 73008260622 |
| These were in the top 100 last week: | | | | | | |
| 68 | 24 | 4 | | HIGH SCHOOL MUSICAL 3: SENIOR YEAR Soundtrack ▲ | WALT/UMA | 8713203 |
| 70 | 38 | 1 | | U218 SINGLES U2 ▲ 4 | ISL/UMA | 1713549 |
| 86 | 1 | 86 | | GRAVITY AT LAST Ayo | UNI/UMA | 5311204 |
| 87 | 1 | 87 | | GET ONBOARD Eric Bibb | ABC/UMA | 1790743 |
| 90 | 6 | 20 | | HELL OF A RIDE Adam Brand | CB/SHK | 064CDCB |
| 92 | 132 | 1 | | HOT FUSS The Killers ▲ 3 | ISL/UMA | 9883795 |
| 93 | 151 | 6 | | GREATEST HITS Guns N' Roses ▲ 3 | GEF/UMA | 9862116 |
| 95 | 7 | 12 | | MR LUCKY Chris Isaak | UMA | 1799498 |
| 96 | 229 | 1 | | BAT OUT OF HELL Meat Loaf ▲ 23 | EPI/SME | 499681.2 |
| 97 | 2 | 94 | | KEEP IT HID Dan Auerbach | NONE/WAR | 7559798385 |
| 98 | 17 | 10 | | IN SILICO Pendulum | WEA/WAR | 2564695661 |
| 99 | 5 | 31 | | MIX TAPE Kram | ISL/UMA | 1796755 |
| 100 | 44 | 26 | | WE STARTED NOTHING The Ting Tings ● | RCA/SME | 88697408152 |

ARIA Singles Summary - Week Commencing 27th April 2009

| TITLE: Artist | Dist | National | | | | NSW | | Vic/Tas | | Qld | | S.A. | | W.A. | |
|--|------|----------|----|----|----|-----|----|---------|----|-----|----|------|----|------|----|
| | | TW | LW | HP | TI | TW | LW | TW | LW | TW | LW | TW | LW | TW | LW |
| 16: Sneaky Sound System | MGM | - | - | 53 | 5 | 50 | - | - | - | - | - | - | - | 47 | 45 |
| ADDICTED: Saving Abel | EMI | 97 | 78 | 36 | 16 | 37 | 42 | 40 | 35 | 31 | - | 41 | 30 | - | 31 |
| ALIVE: Natalie Bassingthwaighe | SME | 87 | 74 | 8 | 27 | - | - | - | - | - | - | - | - | - | - |
| ALL NIGHTMARE LONG: Metallica | UMA | - | - | 90 | 2 | - | 46 | 43 | 42 | 43 | 38 | 44 | - | 44 | - |
| ALL SUMMER LONG: Kid Rock | WAR | 77 | 88 | 1 | 40 | - | - | - | - | - | - | - | - | - | - |
| AMERICA'S SUITEHEARTS: Fall Out Boy | UMA | 89 | 76 | 26 | 19 | - | 43 | 36 | 45 | 39 | 37 | - | 44 | 33 | - |
| ANOTHER WORLD: Antony & The Johnsons | EMI | - | - | - | - | - | - | - | - | - | - | 46 | - | - | - |
| BAD INFLUENCE: P!nk | SME | 28 | - | 28 | 1 | - | - | - | - | - | - | - | - | - | - |
| BEAUTIFUL: Akon Feat. Colby O'Donis & Kardinal Offishall | UMA | 15 | 15 | 14 | 12 | - | - | - | - | - | - | - | - | - | - |
| BEEN WAITING: Jessica Mauboy | SME | 13 | 13 | 12 | 6 | 6 | 6 | 6 | 6 | 7 | 6 | 7 | 6 | 10 | 8 |
| BLOOD BANK: Bon Iver | INE | - | - | - | - | 31 | 25 | 34 | 28 | 37 | 30 | 36 | 33 | 22 | 22 |
| BOOM BOOM POW: Black Eyed Peas | UMA | 11 | 11 | 10 | 4 | - | - | - | - | - | - | - | - | - | - |
| BOTTLE POP: The Pussycat Dolls Feat. Snoop Dogg | UMA | 52 | 46 | 17 | 10 | 10 | 12 | 15 | 12 | 8 | 11 | 15 | 9 | 11 | 18 |
| BRAVADO: Miami Horror | EMI | - | - | - | - | - | - | - | - | - | - | - | - | 43 | - |
| BREAKEVEN: The Script | SME | 18 | 23 | 18 | 5 | 15 | 23 | 14 | 10 | 15 | 20 | 11 | 17 | 28 | 26 |
| BRUISED WATER: Chicane vs. Natasha Bedingfield | UMA | - | - | - | - | 32 | 36 | 21 | 27 | 41 | 41 | 27 | 32 | 36 | 35 |
| BURN: Jessica Mauboy | SME | 47 | 41 | 1 | 22 | 27 | 26 | - | 30 | 30 | 44 | 31 | 25 | 32 | 36 |
| CAUGHT IN THE CROWD: Kate Miller-Heidke | SME | - | - | - | - | - | - | - | 47 | 50 | - | - | - | - | 47 |
| CIRCUS: Britney Spears | SME | 60 | 52 | 6 | 21 | 42 | 37 | 33 | 41 | 42 | 39 | - | 38 | - | 49 |
| CLIMB, THE: Miley Cyrus | UMA | 16 | 27 | 16 | 3 | - | - | - | - | - | - | - | - | - | - |
| CRACK A BOTTLE: Eminem Feat. Dr. Dre & 50 Cent | UMA | 41 | 37 | 18 | 12 | - | - | - | - | - | - | - | - | - | - |
| CRACK THE SHUTTERS: Snow Patrol | UMA | 86 | 75 | 57 | 12 | - | - | - | - | - | - | - | - | - | - |
| DAY N NITE (CROOKERS REMIX): Kid Cudi | UMA | 22 | 26 | 22 | 4 | - | - | - | - | - | - | - | - | - | - |
| DEAD AND GONE: T.I. Feat. Justin Timberlake | WAR | 10 | 6 | 4 | 13 | 5 | 5 | 5 | 4 | 4 | 3 | 3 | 2 | 3 | 3 |
| DECODE: Paramore | WAR | 58 | 59 | 12 | 23 | - | - | - | - | - | - | - | - | - | - |
| DIVA: Beyonce | SME | 45 | 47 | 40 | 8 | - | - | - | - | - | - | - | - | - | - |
| DON'T TRUST ME: 3OH!3 | WAR | 4 | 3 | 3 | 7 | 8 | 9 | 7 | 14 | 6 | 10 | 5 | 11 | 7 | 30 |
| EH, EH (NOTHING ELSE I CAN SAY): Lady GaGa | UMA | 50 | 45 | 15 | 18 | 26 | 14 | 16 | 23 | 12 | 8 | 26 | 18 | 16 | 15 |
| ELECTRIC FEEL: MGMT | SME | 79 | 87 | 7 | 41 | - | - | - | - | - | - | - | - | - | 41 |
| EVERYBODY'S FREE: Global Deejays Feat. Rozalla | SME | 71 | 62 | 7 | 14 | - | 44 | - | 46 | 47 | 33 | 37 | 31 | 35 | - |
| EVERYBODY: Rudenko | UMA | - | - | - | - | 36 | - | 37 | - | - | - | 45 | - | 48 | - |
| FALL FOR YOU: Secondhand Serenade | LIB | 78 | 69 | 19 | 26 | - | - | - | - | - | - | - | - | - | 50 |
| FEAR, THE: Lily Allen | EMI | 20 | 14 | 3 | 19 | 21 | 19 | 17 | 16 | 20 | 23 | 20 | 12 | 18 | 13 |
| FEELS LIKE WOAHH: Wes Carr | SME | 21 | 19 | 14 | 8 | 7 | 7 | 12 | 18 | 14 | 7 | 9 | 7 | 19 | 9 |
| FREAK TONIGHT: Israel | MGM | - | - | - | - | 45 | - | - | - | - | - | - | - | - | - |
| FREEZE: T-Pain Feat. Chris Brown | SME | 80 | 77 | 26 | 18 | - | - | - | - | - | - | - | - | - | - |
| F**K YOU: Lily Allen | EMI | 31 | 29 | 23 | 8 | - | - | - | - | - | - | - | - | - | - |
| GET SHAKY: The Ian Carey Project | UMA | 39 | 31 | 2 | 26 | 17 | 22 | 28 | 21 | 24 | 22 | 22 | 29 | 14 | 19 |
| GIVES YOU HELL: The All-American Rejects | UMA | 17 | 10 | 3 | 22 | 13 | 11 | 10 | 7 | 13 | 15 | 14 | 10 | 13 | 7 |
| GOTTA BE SOMEBODY: Nickelback | WAR | 67 | 65 | 14 | 25 | 41 | 35 | 46 | 33 | 44 | 32 | 48 | 36 | - | 21 |
| HALO: Beyonce | SME | 5 | 5 | 3 | 13 | 3 | 3 | 3 | 3 | 3 | 4 | 4 | 4 | 4 | 4 |
| HEARTLESS: Kanye West | UMA | 95 | 86 | 40 | 22 | - | - | - | - | - | - | - | - | - | - |
| HEY BOYS AND GIRLS (TRUTH OF THE WORLD PT. 2): Evermore | WAR | 8 | 7 | 4 | 7 | 20 | 20 | 11 | 9 | 19 | 17 | 12 | 8 | 12 | 28 |
| HOT N COLD: Katy Perry | EMI | 61 | 53 | 4 | 35 | - | - | - | - | - | - | - | - | - | - |
| HUMAN: The Killers | UMA | 90 | 83 | 28 | 30 | - | - | - | - | - | - | - | - | - | - |
| I AM AUSTRALIAN: Bruce Woodley, Claire Woodley, Carter & Carter | SME | - | - | 56 | 3 | 43 | 32 | 44 | 36 | - | - | - | 39 | - | - |
| I DO NOT HOOK UP: Kelly Clarkson | SME | 62 | 61 | 61 | 2 | - | - | - | - | - | - | - | - | - | - |
| I HATE THIS PART: The Pussycat Dolls | UMA | - | - | 10 | 25 | - | 48 | 42 | 48 | - | - | 39 | 28 | - | 33 |
| I'D COME FOR YOU: Nickelback | WAR | 27 | 35 | 22 | 5 | 9 | - | 8 | - | 9 | - | 8 | - | 9 | - |
| I'M NOT ALONE: Calvin Harris | SME | 76 | - | 76 | 1 | - | - | - | - | - | - | - | - | - | - |
| I'M ON A BOAT: Lonely Island Feat. T-Pain | UMA | 25 | 79 | 25 | 6 | - | - | - | - | - | - | - | - | - | - |
| I'M YOURS: Jason Mraz | WAR | 34 | 49 | 3 | 49 | - | - | - | - | - | - | - | - | - | - |
| IF I KNOW YOU: The Presets | UMA | 65 | 66 | 65 | 8 | - | - | - | - | - | - | - | - | - | - |
| IF I WERE A BOY: Beyonce | SME | 91 | 93 | 3 | 27 | - | - | - | - | - | - | - | - | - | - |
| IF U SEEK AMY: Britney Spears | SME | 23 | 18 | 11 | 11 | 12 | 8 | 13 | 8 | 11 | 14 | 13 | 16 | 15 | 10 |
| IN COLOUR: The John Steel Singers | INE | - | - | - | - | - | - | - | - | 49 | - | - | - | - | 44 |
| IN THE AYER: Flo Rida Feat. Will.I.Am | WAR | 93 | - | 19 | 28 | - | - | - | - | - | - | - | - | - | - |
| JAI HO! (YOU ARE MY DESTINY): A.R. Rahman Feat. The Pussycat Dolls | UMA | 1 | 4 | 1 | 6 | - | - | - | - | - | - | - | - | - | - |
| JIZZ IN MY PANTS: The Lonely Island | UMA | 32 | 24 | 10 | 11 | - | - | - | - | - | - | - | - | - | - |
| JUST DANCE: Lady GaGa Feat. Colby O'Donis | UMA | 64 | 64 | 1 | 43 | - | - | - | - | - | - | - | - | - | - |
| JUST LIKE ME: Jamie Foxx Feat. T.I. | SME | - | - | 91 | 1 | - | 34 | - | - | - | - | - | - | - | 50 |

ARIA Singles Summary - Week Commencing 27th April 2009

| TITLE: Artist | Dist | National | | | | NSW | | Vic/Tas | | Qld | | S.A. | | W.A. | |
|--|------|----------|----|----|----|-----|----|---------|----|-----|----|------|----|------|----|
| | | TW | LW | HP | TI | TW | LW | TW | LW | TW | LW | TW | LW | TW | LW |
| KIDS: MGMT | SME | 83 | 80 | 21 | 37 | - | - | - | - | - | - | - | - | - | - |
| KISS ME THRU THE PHONE: Soulja Boy Tell'Eem Feat. Sammie | UMA | 29 | 36 | 29 | 5 | - | - | - | - | - | - | - | - | - | - |
| KRAZY: Pitbull Feat. Lil Jon | UMA | 38 | - | 38 | 1 | - | - | - | - | - | - | - | - | - | - |
| LET IT ROCK: Kevin Rudolf Feat. Lil Wayne | UMA | 43 | 30 | 3 | 29 | 23 | 27 | 27 | 24 | 22 | 21 | 21 | 23 | 21 | 25 |
| LIKE IT LOUD: Cassie Davis | SME | 59 | 43 | 11 | 13 | 33 | 30 | 41 | 39 | 35 | 29 | 49 | 27 | 31 | 37 |
| LIVE YOUR LIFE: T.I. Feat. Rihanna | WAR | 74 | 68 | 3 | 28 | 47 | 49 | 45 | - | - | - | - | - | 40 | 38 |
| LOVE SEX MAGIC: Ciara Feat. Justin Timberlake | SME | 7 | 9 | 5 | 5 | 4 | 4 | 4 | 5 | 5 | 5 | 6 | 5 | 6 | 5 |
| LOVE STORY: Taylor Swift | UMA | 2 | 2 | 1 | 16 | 2 | 2 | 1 | 1 | 1 | 1 | 2 | 3 | 2 | 1 |
| LOVEGAME: Lady GaGa | UMA | 9 | 12 | 9 | 6 | - | - | - | - | - | - | - | - | - | - |
| LOW: Flo Rida Feat. T-Pain | WAR | 69 | 54 | 1 | 65 | - | - | - | - | - | - | - | - | - | - |
| MAD: Ne-Yo | UMA | 85 | 82 | 82 | 6 | - | - | - | - | - | - | - | - | - | - |
| MANHATTAN: Kings Of Leon | SME | 53 | 71 | 53 | 3 | - | - | - | - | - | - | - | - | - | - |
| MERCY: Duffy | UMA | 66 | 56 | 26 | 53 | - | - | - | - | - | - | - | - | - | - |
| MY DELIRIUM: Ladyhawke | UMA | 12 | 8 | 8 | 20 | - | - | - | - | - | - | - | - | - | - |
| MY LIFE WOULD SUCK WITHOUT YOU: Kelly Clarkson | SME | 26 | 20 | 5 | 14 | 16 | 10 | 20 | 13 | 17 | 12 | 18 | 13 | 20 | 12 |
| MY PEOPLE: The Presets | UMA | 100 | 99 | 14 | 73 | - | - | - | - | - | - | - | - | - | - |
| NEVER MISS A BEAT: Kaiser Chiefs | LIB | 73 | 70 | 47 | 12 | - | - | - | - | - | - | - | - | - | - |
| NEXT IN LINE: Dead Letter Circus | MGM | - | - | 87 | 3 | - | - | - | - | 33 | 40 | - | 50 | - | 32 |
| NO YOU GIRLS: Franz Ferdinand | SME | 42 | 44 | 34 | 6 | - | - | - | - | - | - | - | - | - | - |
| NOT FAIR: Lily Allen | EMI | 19 | 22 | 19 | 4 | - | - | - | - | - | - | - | - | - | - |
| PLEASE DON'T LEAVE ME: P!nk | SME | 33 | 28 | 11 | 15 | 18 | 15 | 19 | 11 | 21 | 18 | 19 | 19 | 23 | 17 |
| POKER FACE: Lady GaGa | UMA | 30 | 25 | 1 | 31 | 34 | 29 | 31 | 31 | 34 | 28 | 40 | 41 | 26 | 20 |
| PRINCESS: Short Stack | UMA | 51 | 48 | 11 | 8 | 11 | 16 | 24 | 19 | 18 | 9 | 16 | 22 | 17 | 11 |
| RAIN ON YOUR PARADE: Duffy | UMA | 72 | 63 | 55 | 8 | - | - | - | - | - | - | - | - | - | - |
| REVELRY: Kings Of Leon | SME | 35 | 38 | 21 | 14 | 40 | 33 | 29 | 29 | 29 | 43 | 32 | - | 37 | 39 |
| RIGHT NOW (NA NA NA): Akon | UMA | 68 | 58 | 17 | 30 | - | 39 | 50 | 43 | 40 | 49 | 43 | - | 38 | - |
| RIGHT ROUND: Flo Rida Feat. Ke\$ha | WAR | 3 | 1 | 1 | 10 | 1 | 1 | 2 | 2 | 2 | 2 | 1 | 1 | 1 | 2 |
| ROCK & ROLL: Eric Hutchinson | WAR | 14 | 16 | 9 | 15 | - | - | - | - | - | - | - | - | - | - |
| RUNNING BACK: Jessica Mauboy Feat. Flo Rida | SME | 98 | 98 | 3 | 30 | - | - | - | - | - | - | - | 48 | - | 43 |
| SAVING GRACE: Pete Murray | SME | - | - | 44 | 20 | - | - | - | - | - | 46 | 50 | - | - | - |
| SERIO: Lost Valentinos | UMA | - | - | - | - | 49 | - | - | - | - | - | - | - | - | - |
| SEX ON FIRE: Kings Of Leon | SME | 40 | 39 | 1 | 37 | - | - | - | - | - | - | 42 | 42 | - | - |
| SHIMMY A GO GO: Short Stack | UMA | - | - | 31 | 14 | 35 | 47 | - | - | 38 | 35 | - | - | - | 42 |
| SINGLE LADIES (PUT A RING ON IT): Beyonce | SME | 36 | 34 | 5 | 23 | 29 | 31 | 32 | 32 | 27 | 25 | 30 | 20 | 27 | 29 |
| SO HUMAN: Lady Sovereign | LIB | 82 | 73 | 73 | 3 | - | - | - | - | - | - | - | - | - | - |
| SO WHAT: P!nk | SME | 55 | 55 | 1 | 36 | - | - | - | - | - | - | - | - | 41 | - |
| SOBER: P!nk | SME | 70 | 72 | 6 | 26 | - | - | - | - | - | - | - | - | 42 | - |
| SOMEDAY SOON: Natalie Bassingthwaighte | SME | 44 | 32 | 7 | 15 | 28 | 18 | 23 | 20 | 36 | 27 | 38 | 21 | 30 | 27 |
| SPACEMAN: The Killers | UMA | 94 | 96 | 62 | 21 | - | - | - | - | - | - | - | - | - | - |
| SUMMARIZE: Little Birdy | UMA | 54 | - | 54 | 1 | 14 | - | 9 | - | 10 | - | 10 | - | 8 | - |
| SWEET DISPOSITION: The Temper Trap | LIB | - | - | - | - | 44 | 38 | 35 | 49 | 32 | 42 | 35 | - | 39 | 34 |
| TAKE BACK THE CITY: Snow Patrol | UMA | - | - | 31 | 15 | - | - | - | - | - | - | 47 | - | - | - |
| TALK LIKE THAT: The Presets | UMA | 81 | 84 | 19 | 36 | - | - | - | - | - | - | - | - | - | - |
| TAME IMPALA (EP): Tame Impala | UMA | - | - | 82 | 8 | 22 | 24 | 22 | 25 | 25 | 19 | 25 | 24 | 5 | 6 |
| THAT'S NOT MY NAME: The Ting Tings | SME | 96 | 94 | 8 | 40 | - | - | - | - | - | - | - | - | - | - |
| THINKING OF YOU: Katy Perry | EMI | 63 | 57 | 34 | 14 | 30 | 28 | 30 | 22 | 28 | 26 | 29 | 26 | 34 | 24 |
| USE SOMEBODY: Kings Of Leon | SME | 46 | 40 | 2 | 31 | 48 | 41 | 47 | 50 | 45 | - | - | 34 | - | 40 |
| VIVA LA VIDA: Coldplay | EMI | 49 | 50 | 2 | 45 | - | - | - | - | - | - | - | - | - | - |
| WAKING UP IN VEGAS: Katy Perry | EMI | 56 | - | 56 | 1 | - | - | - | - | - | - | - | - | - | - |
| WALKING ON A DREAM: Empire Of The Sun | EMI | 57 | 51 | 10 | 34 | - | - | - | 44 | - | - | - | 47 | - | - |
| WE ARE THE PEOPLE: Empire Of The Sun | EMI | 37 | 33 | 24 | 16 | 25 | 21 | 25 | 26 | 26 | 24 | 24 | 35 | 24 | 16 |
| WE MADE YOU: Eminem | UMA | 6 | 21 | 6 | 2 | - | - | - | - | - | - | - | - | - | - |
| WELCOME TO THE AFTERNOON: Lisa Mitchell | WAR | - | - | 93 | 1 | 38 | 45 | 39 | 37 | 46 | 34 | 33 | - | 45 | - |
| WELCOME TO THE WORLD: Kevin Rudolf Feat. Kid Cudi | UMA | 48 | 42 | 42 | 6 | - | - | - | - | - | - | - | - | - | - |
| WHATEVER YOU LIKE: T.I. | WAR | 92 | 95 | 13 | 30 | - | - | - | - | - | - | - | - | - | - |
| WHEREVER: Stafford Brothers vs. Hoxton Whores Feat. Frank Stafford | UMA | - | - | - | - | 39 | 40 | 38 | 34 | 48 | 31 | 34 | 43 | 46 | - |
| WHITE HORSE: Taylor Swift | UMA | 84 | 85 | 41 | 14 | - | - | - | - | - | - | - | - | - | - |
| WOMANIZER: Britney Spears | SME | 88 | 89 | 5 | 28 | - | - | - | - | - | - | - | - | - | - |
| YOU FOUND ME: The Fray | SME | 24 | 17 | 1 | 20 | 19 | 13 | 18 | 15 | 23 | 13 | 17 | 15 | 25 | 14 |
| YOU: Wes Carr | SME | 75 | 60 | 1 | 22 | 46 | - | 49 | 40 | - | 36 | 28 | 37 | 49 | 48 |
| YOUR CALL: Secondhand Serenade | LIB | - | - | - | - | - | - | 48 | - | - | 50 | - | 45 | - | - |
| YOURS FOREVER: Andre Rieu | UMA | - | - | 14 | 5 | 24 | 17 | 26 | 17 | 16 | 16 | 23 | 14 | 29 | 23 |
| ZERO: Yeah Yeah Yeahs | UMA | 99 | - | 88 | 3 | - | - | - | - | - | - | - | - | - | - |

ARIA Albums Summary - Week Commencing 27th April 2009

| TITLE: Artist | Dist | National | | | | NSW | | Vic/Tas | | Qld | | S.A. | | W.A. | |
|---|------|----------|----|----|-----|-----|----|---------|----|-----|----|------|----|------|----|
| | | TW | LW | HP | TI | TW | LW | TW | LW | TW | LW | TW | LW | TW | LW |
| ABBA: Abba Gold | UMA | 73 | 64 | 1 | 192 | - | - | - | - | - | - | - | - | - | - |
| AC/DC: Black Ice | SME | 65 | 47 | 1 | 27 | - | - | - | 48 | 50 | 37 | 48 | 39 | - | 31 |
| AKON: Freedom | UMA | 40 | 36 | 20 | 20 | 42 | 42 | 42 | 44 | 38 | 33 | 28 | 29 | 37 | 37 |
| ALLEN, LILY: Alright, Still | EMI | 43 | 34 | 7 | 44 | - | 39 | 39 | 29 | 46 | 44 | 44 | 32 | 43 | 42 |
| ALLEN, LILY: It's Not Me, It's You | EMI | 2 | 1 | 1 | 11 | 5 | 3 | 2 | 1 | 2 | 4 | 3 | 1 | 1 | 2 |
| BASSINGTHWAIGHTE, NATALIE: 1000 Stars | SME | 33 | 26 | 1 | 9 | 30 | 27 | 24 | 17 | 35 | 25 | 31 | 26 | 40 | 34 |
| BAT FOR LASHES: Two Suns | EMI | 95 | - | 95 | 1 | - | - | - | - | - | - | - | - | - | - |
| BEYONCE: I Am... Sasha Fierce | SME | 10 | 9 | 8 | 23 | 9 | 10 | 10 | 9 | 11 | 10 | 11 | 9 | 10 | 10 |
| BON IVER: For Emma, Forever Ago | INE | 67 | 76 | 32 | 14 | - | - | - | - | - | - | - | - | - | - |
| BROOKS & DUNN: Cowboy Town | SME | 63 | 52 | 23 | 29 | - | - | - | - | 32 | 27 | - | - | - | - |
| CAMPBELL, DAVID: Good Lovin' | SME | 53 | 60 | 10 | 23 | 47 | - | - | - | 43 | - | 36 | 38 | - | 47 |
| CARR, WES: The Way The World Looks | SME | 16 | 11 | 2 | 5 | 13 | 12 | 21 | 15 | 13 | 8 | 14 | 12 | 20 | 13 |
| CASSAR-DALEY, TROY: I Love This Place | LIB | 34 | - | 34 | 1 | 22 | - | 41 | - | 16 | - | - | - | - | - |
| CLARKSON, KELLY: All I Ever Wanted | SME | 22 | 20 | 2 | 7 | 23 | 20 | 26 | 18 | 23 | 16 | 24 | 13 | 25 | 21 |
| COHEN, LEONARD: Live In London | SME | 38 | 33 | 26 | 4 | 37 | 36 | 37 | 37 | 40 | 28 | 30 | 34 | 42 | 39 |
| COHEN, LEONARD: The Essential 3.0 | SME | 48 | 38 | 9 | 15 | 38 | 30 | 49 | 42 | - | 46 | 46 | 46 | 38 | 32 |
| COLDPLAY: A Rush Of Blood To The Head | EMI | 83 | 82 | 1 | 158 | - | - | - | - | - | - | - | - | - | - |
| COLDPLAY: Parachutes | EMI | 89 | 88 | 2 | 108 | - | - | - | - | - | - | - | - | - | - |
| COLDPLAY: Viva La Vida Or Death And All His Friends | EMI | 24 | 16 | 1 | 45 | 21 | 17 | 25 | 21 | 28 | 17 | 22 | 33 | 34 | 19 |
| COLDPLAY: X & Y | EMI | 92 | 77 | 1 | 117 | - | - | - | - | - | - | - | - | - | 50 |
| CREEDENCE CLEARWATER REVIVAL: Chronicle: The 20 Greatest Hits | UMA | 61 | 49 | 27 | 70 | - | - | - | - | - | 48 | - | 47 | - | 49 |
| CYRUS, MILEY: Breakout | UMA | 99 | - | 1 | 33 | - | - | - | - | - | - | - | - | - | - |
| DEPECHE MODE: Sounds Of The Universe | EMI | 32 | - | 32 | 1 | 31 | - | 28 | - | - | - | - | - | - | - |
| DOVES: Kingdom Of Rust | EMI | 74 | 51 | 34 | 3 | - | - | - | 47 | - | - | - | - | - | - |
| DUFFY: Rockferry | UMA | 12 | 7 | 6 | 56 | 12 | 11 | 11 | 6 | 12 | 9 | 12 | 8 | 16 | 8 |
| DYLAN, BOB: The Essential Bob Dylan | SME | 62 | 71 | 36 | 32 | - | - | - | - | - | - | - | - | 50 | - |
| EMPIRE OF THE SUN: Walking On A Dream | EMI | 19 | 15 | 6 | 29 | 24 | 21 | 18 | 14 | 20 | 14 | 26 | 25 | 15 | 9 |
| EVANS, BOB: Goodnight, Bull Creek! | EMI | 41 | 30 | 22 | 3 | 45 | 28 | 46 | 33 | - | 43 | - | 31 | 21 | 18 |
| EVERMORE: Truth Of The World: Welcome To The Show | WAR | 39 | 31 | 14 | 5 | 41 | 33 | 38 | 27 | 33 | 29 | 33 | 21 | 39 | 25 |
| FALL OUT BOY: Folie A Deux | UMA | 82 | 55 | 9 | 19 | - | - | - | 49 | - | - | - | 45 | - | - |
| FLO RIDA: R.O.O.T.S. (Route Of Overcoming The Struggle) | WAR | 11 | 6 | 6 | 3 | 11 | 6 | 12 | 8 | 7 | 5 | 9 | 5 | 7 | 5 |
| FRANZ FERDINAND: Tonight: Franz Ferdinand | SME | 77 | 63 | 6 | 13 | - | - | - | - | - | - | - | - | - | - |
| FRAY, THE: How To Save A Life | SME | 84 | 66 | 1 | 55 | - | - | - | - | - | - | - | - | - | - |
| FRAY, THE: The Fray | SME | 27 | 24 | 3 | 11 | 27 | 23 | 34 | 26 | 25 | 22 | 35 | 19 | 33 | 24 |
| HARVEY, PJ & JOHN PARISH: A Woman A Man Walked By | UMA | 78 | 57 | 25 | 4 | - | - | - | 50 | - | - | - | - | - | - |
| HOBSON, DAVID & TEDDY TAHU RHODES: You'll Never Walk Alone | UMA | 44 | 53 | 16 | 9 | 34 | 40 | 50 | - | - | - | 38 | - | 45 | - |
| HUMAN NATURE: A Symphony Of Hits | SME | 64 | 85 | 10 | 21 | - | - | - | - | - | - | - | - | - | - |
| HUTCHINSON, ERIC: Sounds Like This | WAR | 42 | 65 | 42 | 2 | - | - | 33 | - | - | 38 | 23 | - | 29 | - |
| IL DIVO: The Promise | SME | 90 | - | 5 | 21 | - | - | - | - | - | - | - | - | - | - |
| JACKSON, MICHAEL: Essential Michael Jackson | SME | 52 | 43 | 12 | 61 | 46 | 45 | - | 31 | 34 | 35 | - | - | - | 46 |
| KAISER CHIEFS: Off With Their Heads | LIB | 96 | 91 | 12 | 11 | - | - | - | - | - | - | - | - | - | - |
| KEATING, RONAN: Songs For My Mother | UMA | 1 | - | 1 | 1 | 1 | - | 1 | - | 1 | - | 1 | - | 4 | - |
| KELLY, PAUL: Songs From The South Volume 1 & 2 | EMI | 97 | - | 22 | 22 | - | - | - | - | - | - | - | - | - | - |
| KILLERS, THE: Day & Age | UMA | 60 | 39 | 4 | 22 | - | 43 | - | 41 | - | 47 | - | - | 48 | 23 |
| KINGS OF LEON: Aha Shake Heartbreak | SME | 51 | 42 | 25 | 74 | - | 48 | - | 39 | 37 | 31 | - | 49 | 32 | 30 |
| KINGS OF LEON: Because Of The Times | SME | 49 | 35 | 4 | 86 | 49 | 47 | 45 | 30 | 44 | 32 | - | 36 | 41 | 27 |
| KINGS OF LEON: Only By The Night | SME | 5 | 5 | 1 | 32 | 6 | 5 | 4 | 3 | 5 | 3 | 6 | 4 | 3 | 1 |
| KINGS OF LEON: Youth & Young Manhood | SME | 87 | 87 | 46 | 39 | - | - | - | - | - | - | - | - | - | - |
| KRALL, DIANA: Quiet Nights | UMA | 17 | 14 | 14 | 4 | 14 | 16 | 14 | 13 | 22 | 15 | 17 | 10 | 22 | 16 |
| LADY GAGA: The Fame | UMA | 13 | 13 | 4 | 33 | 15 | 18 | 15 | 12 | 14 | 12 | 15 | 14 | 14 | 12 |
| LADY OF THE SUNSHINE: Smoking Gun | EMI | 80 | 67 | 45 | 3 | - | - | - | - | - | - | - | - | - | - |
| LADYHAWKE: Ladyhawke | UMA | 25 | 27 | 16 | 26 | 29 | 29 | 19 | 19 | 42 | - | 50 | 37 | 27 | 35 |
| LAMB OF GOD: Wrath | WAR | 100 | 93 | 8 | 8 | - | - | - | - | - | - | - | - | - | - |
| LENNOX, ANNIE: The Annie Lennox Collection | SME | 28 | 23 | 17 | 4 | 18 | 15 | 30 | 23 | 29 | 26 | 45 | 23 | 47 | 33 |
| LONELY ISLAND, THE: Incredibad | UMA | 45 | 54 | 45 | 4 | 50 | - | - | - | 49 | - | 49 | - | 44 | - |
| MASTODON: Crack The Skye | WAR | 76 | 68 | 19 | 4 | - | - | - | - | - | - | - | - | - | - |
| MAUBOY, JESSICA: Been Waiting | SME | 20 | 22 | 11 | 22 | 16 | 22 | 17 | 16 | 24 | 21 | 19 | 16 | 31 | 28 |
| METRIC: Fantasies | INE | 72 | 48 | 48 | 2 | - | - | - | - | - | - | - | - | - | - |
| MGMT: Oracular Spectacular | SME | 75 | 61 | 6 | 52 | - | - | - | - | - | - | - | - | - | - |
| MRAZ, JASON: We Sing. We Dance. We Steal Things. | WAR | 18 | 19 | 3 | 49 | 20 | 7 | 20 | 35 | 18 | 19 | 10 | 40 | 17 | 44 |
| NICKELBACK: Dark Horse | WAR | 21 | 21 | 3 | 23 | 28 | 24 | 23 | 24 | 15 | 13 | 20 | 18 | 23 | 20 |
| NIRVANA: Nevermind | UMA | 85 | 62 | 2 | 207 | - | - | - | - | - | - | - | - | - | - |

ARIA Albums Summary - Week Commencing 27th April 2009

| TITLE: Artist | Dist | National | | | | NSW | | Vic/Tas | | Qld | | S.A. | | W.A. | |
|--|------|----------|----|----|-----|-----|----|---------|----|-----|----|------|----|------|----|
| | | TW | LW | HP | TI | TW | LW | TW | LW | TW | LW | TW | LW | TW | LW |
| PINK: Funhouse | SME | 8 | 8 | 1 | 26 | 8 | 9 | 7 | 7 | 9 | 7 | 7 | 6 | 9 | 7 |
| PINK: I'm Not Dead | SME | 36 | 32 | 1 | 153 | 36 | 34 | 32 | 28 | 26 | 24 | 27 | 22 | 36 | 41 |
| PINK: M!ssundaztood | SME | 50 | 46 | 14 | 96 | - | - | 40 | 40 | 41 | 39 | 42 | 43 | 49 | 43 |
| PINK: Try This | SME | 69 | 70 | 8 | 48 | - | - | - | - | - | - | - | - | - | - |
| PEARL JAM: Ten | SME | 30 | 25 | 11 | 183 | 32 | 25 | 31 | 22 | 21 | 23 | 29 | 17 | 28 | 22 |
| PERRY, KATY: One Of The Boys | EMI | 54 | 44 | 11 | 38 | - | 46 | 47 | 38 | 48 | 36 | 37 | 44 | - | - |
| POTTS, PAUL: One Chance | SME | 81 | - | 1 | 32 | - | - | - | - | - | - | - | - | - | - |
| POTTS, PAUL: Passione | SME | 9 | - | 9 | 1 | 10 | - | 6 | - | 10 | - | 8 | - | 13 | - |
| PRESETS, THE: Apocalypso | UMA | 35 | 28 | 1 | 54 | 35 | 26 | 27 | 25 | 36 | 34 | 39 | 27 | 26 | 29 |
| PRIESTS, THE: The Priests | SME | 56 | 75 | 12 | 12 | 33 | 37 | - | - | - | - | - | - | - | - |
| PRODIGY, THE: Invaders Must Die | SHK | 29 | 29 | 3 | 9 | 39 | 35 | 35 | 32 | 31 | 30 | 34 | 24 | 11 | 6 |
| PUSSYCAT DOLLS, THE: Doll Domination | UMA | 55 | 72 | 4 | 31 | - | - | 43 | - | - | - | 47 | - | - | - |
| RADIOHEAD: The Best Of | EMI | 86 | 84 | 10 | 19 | - | - | - | - | - | - | - | - | - | - |
| RIEU, ANDRE: Masterpieces | UMA | 26 | - | 26 | 1 | 25 | - | 29 | - | 27 | - | 21 | - | 35 | - |
| ROYKSOPP: Junior | EMI | 88 | 90 | 28 | 5 | - | - | - | - | - | - | - | - | - | - |
| SCRIPT, THE: The Script | SME | 66 | 73 | 66 | 2 | - | - | - | - | - | - | - | - | - | - |
| SEASICK STEVE: I Started Out With Nothin And I Still Got Most Of It Left | WAR | 31 | 17 | 17 | 3 | 43 | 8 | 44 | 43 | 45 | 45 | - | 30 | 6 | 40 |
| SIA: Some People Have Real Problems | INE | 57 | 69 | 49 | 4 | - | - | - | - | - | - | 41 | 42 | - | - |
| SILVERSUN PICKUPS: Swoon | WAR | 14 | - | 14 | 1 | 19 | - | 16 | - | 17 | - | 16 | - | 18 | - |
| SIMON & GARFUNKEL: The Essential Simon & Garfunkel | SME | 46 | 37 | 37 | 15 | 48 | 41 | 36 | 36 | - | 41 | - | 48 | - | - |
| SNOW PATROL: A Hundred Million Suns | UMA | 94 | 80 | 6 | 26 | - | - | - | - | - | - | - | - | - | - |
| SOUNDTRACK: Fast & Furious 4 | UMA | 37 | - | 37 | 1 | 44 | - | 48 | - | 39 | - | 43 | - | 46 | - |
| SOUNDTRACK: High School Musical 3: Senior Year | UMA | 93 | 58 | 4 | 25 | - | - | - | - | - | - | - | - | - | - |
| SOUNDTRACK: Juno | WAR | 70 | 50 | 5 | 33 | - | 50 | - | 46 | - | 49 | - | - | - | - |
| SOUNDTRACK: Mamma Mia! | UMA | 79 | 86 | 1 | 42 | - | - | - | - | - | - | - | - | - | - |
| SOUNDTRACK: Packed To The Rafters | WAR | 59 | 45 | 7 | 21 | - | 49 | - | 45 | - | 42 | 40 | 35 | - | 36 |
| SOUNDTRACK: Slumdog Millionaire | UMA | 68 | 56 | 36 | 15 | - | - | - | - | - | - | - | - | - | - |
| SOUNDTRACK: The Boat That Rocked | UMA | 3 | 4 | 3 | 4 | 2 | 4 | 5 | 4 | 6 | 6 | 2 | 2 | 2 | 3 |
| SOUNDTRACK: Twilight | WAR | 7 | 10 | 3 | 23 | 7 | 14 | 9 | 11 | 8 | 11 | 5 | 7 | 8 | 15 |
| SPEARS, BRITNEY: Circus | SME | 58 | 41 | 3 | 21 | - | 44 | - | 34 | - | 40 | - | 50 | - | - |
| SPRINGSTEEN, BRUCE: Greatest Hits | SME | 91 | 79 | 1 | 73 | - | - | - | - | - | - | - | - | - | - |
| STATIC-X: Cult Of Static | WAR | 98 | 83 | 33 | 4 | - | - | - | - | - | - | - | - | - | - |
| SWIFT, TAYLOR: Fearless | UMA | 4 | 2 | 2 | 23 | 3 | 2 | 3 | 2 | 3 | 2 | 4 | 3 | 5 | 4 |
| T.I.: Paper Trail | WAR | 71 | 59 | 16 | 30 | - | - | - | - | 47 | 50 | - | - | - | 48 |
| U2: No Line On The Horizon | UMA | 23 | 18 | 1 | 8 | 26 | 19 | 22 | 20 | 30 | 20 | 25 | 15 | 19 | 17 |
| URBAN, KEITH: Defying Gravity | EMI | 6 | 3 | 3 | 3 | 4 | 1 | 8 | 5 | 4 | 1 | 13 | 11 | 24 | 14 |
| YEAH YEAH YEAHS: It's Blitz! | UMA | 15 | 12 | 8 | 3 | 17 | 13 | 13 | 10 | 19 | 18 | 18 | 20 | 12 | 11 |
| YUNUPINGU, GEOFFREY GURRUMUL: Gurrumul | MGM | 47 | 40 | 3 | 52 | 40 | 38 | - | - | - | - | 32 | 28 | 30 | 26 |

ARIA Compilations Summary - Week Commencing 27th April 2009

| TITLE: Artist | Dist | National | | | | NSW | | Vic/Tas | | Qld | | S.A. | | W.A. | |
|---|------|----------|----|----|----|-----|----|---------|----|-----|----|------|----|------|----|
| | | TW | LW | HP | TI | TW | LW | TW | LW | TW | LW | TW | LW | TW | LW |
| VARIOUS: So Fresh: The Hits Of Autumn 2009 | UMA | 1 | 1 | 1 | 5 | 1 | 1 | 1 | 1 | 1 | 1 | 1 | 1 | 1 | 1 |
| VARIOUS: Triple J Hottest 100 Volume 16 | UMA | 2 | 2 | 1 | 8 | 2 | 2 | 2 | 2 | 2 | 2 | 2 | 2 | 2 | 2 |
| VARIOUS: RNB Superclub: Greatest Club Hits 2001-2009 | WAR | 3 | 3 | 3 | 3 | 4 | 3 | 5 | 4 | 4 | 3 | 4 | 4 | 3 | 3 |
| VARIOUS: Video Hits: One Hit Wonders | EMI | 4 | 5 | 4 | 4 | 5 | 4 | 4 | 5 | 3 | 4 | 5 | 5 | - | - |
| VARIOUS: Divas 2 | SME | 5 | - | 5 | 1 | 3 | - | - | - | - | - | - | - | 4 | - |
| VARIOUS: OneLove Sound Machine 2009 - Mixed By Ajax, Bart B More & Minx | SME | 6 | 4 | 3 | 4 | - | 5 | 3 | 3 | - | - | 3 | 3 | 5 | 4 |
| VARIOUS: Housework Songs III | EMI | 7 | 10 | 7 | 2 | - | - | - | - | 5 | - | - | - | - | - |
| VARIOUS: Now: The Hits Of Autumn 2009 | EMI | 8 | 6 | 4 | 4 | - | - | - | - | - | 5 | - | - | - | 5 |
| VARIOUS: 101 80s Hits | EMI | 9 | 7 | 3 | 26 | - | - | - | - | - | - | - | - | - | - |
| VARIOUS: Clubbers Guide To 2009 | UMA | 10 | 8 | 1 | 13 | - | - | - | - | - | - | - | - | - | - |

ARIA Australian Artists - Week Commencing 27th April 2009

Singles



| TW | LW | TI | HP | TITLE: Artist | Co. | Cat. No. |
|----|----|-----|----|--|----------|----------------|
| 1 | 1 | 7 | 1 | HEY BOYS AND GIRLS (TRUTH OF THE WORLD PT. 2) Evermore | WARNER | 5186531452 |
| 2 | 2 | 6 | 2 | BEEN WAITING Jessica Mauboy | SME | 88697491362 |
| 3 | 3 | 8 | 2 | FEELS LIKE WOAHH Wes Carr | SME | 88697509612 |
| 4 | 5 | 16 | 4 | WE ARE THE PEOPLE Empire Of The Sun | CAP/EMI | 2435772 |
| 5 | 4 | 15 | 1 | SOMEDAY SOON Natalie Bassingthwaighte ● | SME | 88697444502 |
| 6 | 6 | 22 | 1 | BURN Jessica Mauboy ▲ | SME | 88697436282 |
| 7 | 8 | 8 | 2 | PRINCESS Short Stack | SMR/UMA | SMR0009 |
| 8 | - | NEW | 8 | SUMMARIZE Little Birdy | ELEV/UMA | ELEVEND85 |
| 9 | 9 | 34 | 2 | WALKING ON A DREAM Empire Of The Sun ▲ | CAP/EMI | 2349372 |
| 10 | 7 | 13 | 2 | LIKE IT LOUD Cassie Davis ● | SME | 88697444512 |
| 11 | 11 | 8 | 11 | IF I KNOW YOU The Presets | MOD/UMA | 00602527017716 |
| 12 | 10 | 22 | 1 | YOU Wes Carr ▲ | SME | 88697436702 |
| 13 | 14 | 35 | 2 | TALK LIKE THAT The Presets ● | MOD/UMA | MODCDS060 |
| 14 | 13 | 27 | 2 | ALIVE Natalie Bassingthwaighte ▲ | SME | 88697420212 |
| 15 | 16 | 29 | 1 | RUNNING BACK Jessica Mauboy Feat. Flo Rida ▲ 2 | SME | 88697411792 |
| 16 | 17 | 70 | 2 | MY PEOPLE The Presets ▲ | MOD/UMA | 1760932 |
| 17 | 12 | 4 | 10 | MORE THAN THIS Missy Higgins | ELEV/UMA | 00602527037257 |
| 18 | - | NEW | 18 | SOON WE'LL BE FOUND Sia | INERTIA | GBPNH0700010 |
| 19 | 18 | 4 | 14 | BUTTONS Sia | INERTIA | GBPNH0700014 |
| 20 | 20 | 37 | 2 | WHITE NOISE The Living End ▲ | DEW/UMA | DEW900073 |

Albums



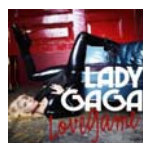
| TW | LW | TI | HP | TITLE: Artist | Co. | Cat. No. |
|----|----|-----|----|--|---------|-------------|
| 1 | 1 | 3 | 1 | DEFYING GRAVITY Keith Urban ● | CPT/EMI | 2357512 |
| 2 | 2 | 5 | 1 | THE WAY THE WORLD LOOKS Wes Carr ● | SME | 88697501492 |
| 3 | 3 | 29 | 1 | WALKING ON A DREAM Empire Of The Sun ▲ | CAP/EMI | 2354032 |
| 4 | 4 | 22 | 4 | BEEN WAITING Jessica Mauboy ▲ | SME | 88697431782 |
| 5 | 5 | 9 | 1 | 1000 STARS Natalie Bassingthwaighte ● | SME | 88697461742 |
| 6 | - | NEW | 6 | I LOVE THIS PLACE Troy Cassar-Daley | LIB/UMA | LMCD0046 |
| 7 | 6 | 54 | 1 | APOCALYPSO The Presets ▲ 2 | MOD/UMA | MODCD084 |
| 8 | 7 | 5 | 4 | TRUTH OF THE WORLD: WELCOME TO THE SHOW Evermore | WARNER | 5186531142 |
| 9 | 8 | 3 | 6 | GOODNIGHT, BULL CREEK! Bob Evans | CAP/EMI | 2682202 |
| 10 | 12 | 9 | 2 | YOU'LL NEVER WALK ALONE David Hobson & Teddy Tahu Rhodes | ACL/UMA | 4763284 |
| 11 | 9 | 44 | 2 | GURRUMUL Geoffrey Gurrumul Yunupingu ▲ | SFM/MGM | SFGU080201 |
| 12 | 13 | 23 | 2 | GOOD LOVIN' David Campbell ▲ | SME | 88697415732 |
| 13 | 10 | 21 | 2 | PACKED TO THE RAFTERS Soundtrack ▲ | WARNER | 5186516652 |
| 14 | 11 | 27 | 1 | BLACK ICE AC/DC ▲ 5 | ALB/SME | 88697417452 |
| 15 | 16 | 21 | 4 | A SYMPHONY OF HITS Human Nature ▲ | SME | 88697416852 |
| 16 | 17 | 4 | 16 | SOME PEOPLE HAVE REAL PROBLEMS Sia | INERTIA | MPRCAUS1 |
| 17 | 14 | 3 | 13 | SMOKING GUN Lady Of The Sunshine | CAP/EMI | 6969422 |
| 18 | 15 | 9 | 2 | LIVE ON EARTH The Cat Empire | VIR/EMI | 6959412 |
| 19 | - | R/E | 6 | SONGS FROM THE SOUTH VOLUME 1 & 2 Paul Kelly ● | CAP/EMI | 6985812 |
| 20 | 18 | 7 | 5 | HELL OF A RIDE Adam Brand | CB/SHK | 064CDCB |

ARIA Digital Tracks - Week Commencing 27th April 2009

| TW | LW | TI(40) | HP | TITLE:Artist | Co. | ISRC |
|----|----|--------|----|---|--------|--------------|
| 1 | 2 | 6 | 1 | JAI HO! (YOU ARE MY DESTINY) A.R. Rahman Feat. The Pussycat Dolls | UMA | USUM70954362 |
| 2 | 1 | 8 | 1 | DON'T TRUST ME 3OH!3 | WARNER | USAT20802554 |
| 3 | 4 | 15 | 1 | LOVE STORY Taylor Swift | UMA | USCJY0803275 |
| 4 | 3 | 11 | 1 | RIGHT ROUND Flo Rida Feat. Ke\$ha | WARNER | USAT20900316 |
| 5 | 5 | 12 | 3 | HALO Beyonce | SME | USSM10804556 |
| 6 | 21 | 2 | 6 | WE MADE YOU Eminem | UMA | USUM70959847 |
| 7 | 6 | 7 | 4 | HEY BOYS AND GIRLS (TRUTH OF THE WORLD, PT. 2) Evermore | WARNER | AUWA00900001 |
| 8 | 9 | 4 | 8 | BOOM BOOM POW Black Eyed Peas | UMA | USUM70955624 |
| 9 | 8 | 13 | 8 | MY DELIRIUM Ladyhawke | UMA | GBUM70808705 |
| 10 | 11 | 5 | 4 | LOVE SEX MAGIC Ciara Feat. Justin Timberlake | SME | USLF20900012 |
| 11 | 12 | 5 | 11 | LOVEGAME Lady GaGa | UMA | USUM70824404 |
| 12 | 7 | 12 | 5 | DEAD AND GONE T.I. Feat. Justin Timberlake | WARNER | USAT20803689 |
| 13 | 13 | 14 | 9 | ROCK & ROLL Eric Hutchinson | WARNER | USWB10800447 |
| 14 | 24 | 2 | 14 | THE CLIMB Miley Cyrus | UMA | USWD10935758 |
| 15 | 14 | 7 | 11 | BEEN WAITING Jessica Mauboy | SME | AUBM00800490 |
| 16 | 19 | 6 | 16 | BEAUTIFUL Akon, Kardinal Offishall, Colby O'Donis | UMA | USUM70845927 |
| 17 | 23 | 3 | 17 | BREAKEVEN The Script | SME | GBARL0800147 |
| 18 | 10 | 15 | 3 | GIVES YOU HELL The All-American Rejects | UMA | USUM70837368 |
| 19 | 22 | 3 | 19 | NOT FAIR Lily Allen | EMI | GBAYE0802261 |
| 20 | 16 | 16 | 3 | THE FEAR Lily Allen | EMI | GBAYE0802259 |
| 21 | 17 | 6 | 14 | FEELS LIKE WOAHH Wes Carr | SME | AUBM00900042 |
| 22 | 15 | 16 | 1 | YOU FOUND ME The Fray | SME | USSM10803009 |
| 23 | - | NEW | 23 | I'M ON A BOAT The Lonely Island Feat. T-Pain | UMA | USUM70900497 |
| 24 | 18 | 10 | 13 | IF U SEEK AMY Britney Spears | SME | USJ110801329 |
| 25 | 32 | 2 | 25 | SUGAR Flo Rida Feat. Wynter | WARNER | USAT20900460 |
| 26 | - | NEW | 26 | BAD INFLUENCE P!nk | SME | USLF20800183 |
| 27 | 20 | 14 | 5 | MY LIFE WOULD SUCK WITHOUT YOU Kelly Clarkson | SME | GBCTA0800348 |
| 28 | 33 | 3 | 28 | KISS ME THRU THE PHONE Soulja Boy Tell'em Feat. Sammie | UMA | USUM70848200 |
| 29 | 47 | 40 | 1 | I'M YOURS Jason Mraz | WARNER | USEE10800667 |
| 30 | 27 | 11 | 24 | F**K YOU Lily Allen | EMI | GBAYE0802265 |
| 31 | 25 | 10 | 10 | JIZZ IN MY PANTS The Lonely Island | UMA | USUM70852238 |
| 32 | 31 | 12 | 19 | REVELRY Kings Of Leon | SME | USRC10800306 |
| 33 | 28 | 4 | 23 | DAY 'N' NITE (CROOKERS REMIX) Kid Cudi | UMA | AUNV00700913 |
| 34 | 26 | 30 | 1 | POKER FACE Lady GaGa | UMA | USUM70824409 |
| 35 | - | NEW | 35 | KRAZY Pitbull Feat. Lil Jon | UMA | USUM70957024 |
| 36 | 29 | 14 | 15 | PLEASE DON'T LEAVE ME P!nk | SME | USLF20800182 |
| 37 | 36 | 24 | 4 | SINGLE LADIES (PUT A RING ON IT) Beyonce | SME | USSM10803760 |
| 38 | 41 | 3 | 31 | NO YOU GIRLS Franz Ferdinand | SME | GBCEL0800926 |
| 39 | 37 | 7 | 28 | I'D COME FOR YOU Nickelback | WARNER | NLA320888016 |
| 40 | - | NEW | 40 | KNOW YOUR ENEMY Green Day | WARNER | USRE10900522 |
| 41 | 38 | 37 | 1 | SEX ON FIRE Kings Of Leon | SME | USRC10800300 |
| 42 | 34 | 13 | 23 | WE ARE THE PEOPLE Empire Of The Sun | EMI | AUEI10800041 |
| 43 | - | NEW | 43 | LOVEGAME (Video) Lady GaGa | UMA | USUV70900015 |
| 44 | 39 | 31 | 2 | USE SOMEBODY Kings Of Leon | SME | USRC10800301 |
| 45 | - | NEW | 45 | DAY 'N' NITE Kid Cudi | UMA | USUM70957532 |
| 46 | 30 | 15 | 7 | SOMEDAY SOON Natalie Bassingthwaighte | SME | AUBM00800659 |
| 47 | 46 | 34 | 2 | VIVA LA VIDA Coldplay | EMI | GBAYE0800265 |
| 48 | 44 | 21 | 1 | BURN Jessica Mauboy | SME | AUBM00800491 |
| 49 | 42 | 1 | 49 | WELCOME TO THE WORLD Kevin Rudolf Feat. Rick Ross | UMA | USCM50800951 |
| 50 | 45 | 3 | 35 | DIVA Beyonce | SME | USSM10804755 |

ARIA Dance - Week Commencing 27th April 2009

Singles



| TW | LW | TI | HP | TITLE: Artist | Co. | Cat. No. |
|----|----|-----|----|---|---------|----------------|
| 1 | 1 | 3 | 1 | LOVEGAME Lady GaGa | INR/UMA | 00602517990326 |
| 2 | 3 | 4 | 2 | DAY N NITE (CROOKERS REMIX) Kid Cudi | UMA | 00602527035543 |
| 3 | 2 | 31 | 1 | POKER FACE Lady GaGa ▲ 3 | INR/UMA | 1789813 |
| 4 | 4 | 26 | 1 | GET SHAKY The Ian Carey Project ▲ | VIC/UMA | ZIP049CD |
| 5 | 5 | 19 | 2 | CIRCUS Britney Spears ▲ | JVE/SME | 88697455282 |
| 6 | 7 | 40 | 1 | JUST DANCE Lady GaGa Feat. Colby O'Donis ▲ 3 | INR/UMA | 1779103 |
| 7 | 8 | 11 | 7 | IF I KNOW YOU The Presets | MOD/UMA | 00602527017716 |
| 8 | 6 | 14 | 2 | EVERYBODY'S FREE Global Deejays Feat. Rozalla | ONE/SME | OMG011 |
| 9 | 9 | 30 | 4 | TALK LIKE THAT The Presets ● | MOD/UMA | MODCDS060 |
| 10 | 11 | 26 | 1 | WOMANIZER Britney Spears ▲ | JVE/SME | 88697409442 |
| 11 | 10 | 69 | 2 | LET ME THINK ABOUT IT Ida Corr vs Fedde Le Grand | MOS/UMA | MOSCD5054 |
| 12 | 14 | 4 | 10 | ZERO Yeah Yeah Yeahs | MOD/UMA | 00602527009537 |
| 13 | 13 | 73 | 1 | MY PEOPLE The Presets ▲ | MOD/UMA | 1760932 |
| 14 | 15 | 32 | 2 | DANCE WIV ME Dizzee Rascal Feat. Calvin Harris & Chrome ● | HUS/UMA | HUSSYCD5088 |
| 15 | 16 | 51 | 1 | BLACK AND GOLD Sam Sparro ▲ | ISL/UMA | 1768362 |
| 16 | 19 | 81 | 1 | DON'T HOLD BACK The Potbelleez ▲ | MOS/UMA | VG12063CD |
| 17 | 17 | 13 | 5 | CAN'T HOLD BACK Kaz James Feat. Macy Gray | SME | 88697462972 |
| 18 | 21 | 9 | 7 | INVADERS MUST DIE (CHASE AND STATUS REMIX) The Prodigy | SHOCK | GBCEJ0800386 |
| 19 | 20 | 53 | 1 | THIS BOY'S IN LOVE The Presets ● | MOD/UMA | MODCDS052 |
| 20 | 18 | 20 | 7 | SEVENTEEN FOREVER Metro Station | COL/SME | 88697439222 |
| 21 | 22 | 2 | 21 | WHEREVER Stafford Brothers vs. Hoxton Whores Feat. Frank Stafford | HUS/UMA | HUSSYCD5090 |
| 22 | - | R/E | 2 | CRY FOR YOU September ● | CSR/UMA | CSRCD50553 |
| 23 | - | R/E | 10 | TROUBLE TROUBLE The Potbelleez | VIC/UMA | VG12096CD |
| 24 | 25 | 40 | 2 | ARE YOU WITH ME The Potbelleez ● | VIC/UMA | VG12088CD |
| 25 | 23 | 15 | 6 | HOT SUMMER Rhys | WARNER | A10302B0000768 |

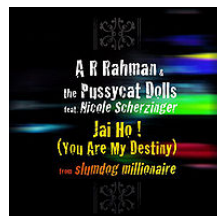
Albums



| TW | LW | TI | HP | TITLE: Artist | Co. | Cat. No. |
|----|----|-----|----|---|---------|-------------|
| 1 | 1 | 4 | 1 | ONELOVE SOUND MACHINE 2009 Various | ONE/SME | 88697492312 |
| 2 | 2 | 33 | 1 | THE FAME Lady GaGa ▲ 2 | INR/UMA | 1791397 |
| 3 | 3 | 14 | 1 | CLUBBERS GUIDE TO 2009 Various ● | MOS/UMA | MOSA090 |
| 4 | 5 | 9 | 1 | INVADERS MUST DIE The Prodigy ● | SHOCK | HOSPCD001X |
| 5 | 4 | 54 | 1 | APOCALYPSO The Presets ▲ 2 | MOD/UMA | MODCD084 |
| 6 | 6 | 26 | 1 | THE ANNUAL 2009 Various - John Course + Goodwill ▲ 2 | MOS/UMA | MOSSP002 |
| 7 | 7 | 21 | 1 | CIRCUS Britney Spears ▲ | JVE/SME | 88697407762 |
| 8 | 8 | 6 | 5 | VICIOUS CUTS 2009 Various - mixed by Ian Carey & John Course | VIC/UMA | ZIPLP004CD |
| 9 | 9 | 5 | 7 | SKITZMIX 31 Nick Skitz | LNG/UMA | LNGA0001 |
| 10 | 10 | 3 | 10 | PROGRESSION VOL. 2 Various | MOS/UMA | MOSA094 |
| 11 | 11 | 5 | 7 | JUNIOR Royksopp | VIR/EMI | 6962712 |
| 12 | - | NEW | 12 | TRANCE ENERGY AUSTRALIA 2009 Various | STOMP | GENNEXT013 |
| 13 | 14 | 64 | 3 | ALIVE 2007 Daft Punk ● | VIR/EMI | 5098422 |
| 14 | 12 | 10 | 6 | RAVE ANTHEMS 1990-1996 Various | MOS/UMA | MOSA091 |
| 15 | 13 | 44 | 2 | IN SILICO Pendulum | WEA/WAR | 2564695661 |
| 16 | 15 | 6 | 11 | RAW 09 Various - mixed by Chris Fraser + Jeff Drake | ONE/SME | OMGLP003 |
| 17 | 16 | 5 | 10 | YES Pet Shop Boys | CAP/EMI | 6953452 |
| 18 | 17 | 9 | 8 | HOUSEXY 2009 Various - mixed by Mobin Master + Those Usual Suspects | MOS/UMA | MOSA092 |
| 19 | 19 | 35 | 1 | 2 Sneaky Sound System ● | WHA/MGM | WHACK09 |
| 20 | 20 | 31 | 1 | MAXIMUM BASS XTREME Various ● | MOS/UMA | MOSA086 |
| 21 | 18 | 29 | 1 | CHILLOUT SESSIONS XI Various ● | MOS/UMA | MOSA087 |
| 22 | 21 | 75 | 1 | BLACKOUT Britney Spears ▲ | JVE/SME | 88697190732 |
| 23 | 22 | 44 | 1 | SESSIONS FIVE Various - mixed by Goodwill And The Potbelleez ▲ | MOS/UMA | MOSA081 |
| 24 | - | R/E | 3 | THEIR LAW - THE SINGLES 1990-2005 The Prodigy | XL/INE | XLCD190 |
| 25 | 25 | 3 | 25 | A-TRAK PRESENTS INFINITY +1 Various | ONE/SME | 88697514182 |

© 1990 - 2009 Australian Recording Industry Association Ltd.

Strictly no reproduction, communication or other exploitation of the ARIA Report or its contents without written approval by ARIA.
To request permission to reprint, publish or otherwise utilise the ARIA Report or any ARIA Chart(s), please contact ARIA on (02) 8569 1144



#1 Urban Single this week

ARIA Urban Singles Chart - Week Commencing 27th April 2009

| TW | LW | TI | HP | TITLE: Artist | Co. | Cat. No. |
|----|----|-----|----|---|---------|----------------|
| 1 | 2 | 6 | 1 | JAI HO! (YOU ARE MY DESTINY) A.R. Rahman Feat. The Pussycat Dolls | INR/UMA | 00602527040578 |
| 2 | 1 | 10 | 1 | RIGHT ROUND Flo Rida Feat. Ke\$ha ▲ | ATL/WAR | 7567896654 |
| 3 | 3 | 13 | 2 | HALO Beyonce ▲ | COL/SME | 88697473502 |
| 4 | 9 | 2 | 4 | WE MADE YOU Eminem | INR/UMA | 00602527047270 |
| 5 | 5 | 5 | 3 | LOVE SEX MAGIC Ciara Feat. Justin Timberlake | LAF/SME | 88697508652 |
| 6 | 4 | 13 | 3 | DEAD AND GONE T.I. Feat. Justin Timberlake | ATL/WAR | 7567896689 |
| 7 | 6 | 4 | 6 | BOOM BOOM POW Black Eyed Peas | INR/UMA | 00602527026220 |
| 8 | 7 | 6 | 6 | BEEN WAITING Jessica Mauboy | SME | 88697491362 |
| 9 | 8 | 20 | 7 | BEAUTIFUL Akon Feat. Colby O'Donis & Kardinal Offishall | UNI/UMA | 00602517994539 |
| 10 | - | NEW | 10 | I'M ON A BOAT The Lonely Island | UNI/UMA | 00602517990081 |
| 11 | 11 | 5 | 11 | KISS ME THRU THE PHONE Soulja Boy Tell'em Feat. Sammie | INR/UMA | 00602517965690 |
| 12 | 10 | 23 | 2 | SINGLE LADIES (PUT A RING ON IT) Beyonce ▲ 2 | COL/SME | 88697417512 |
| 13 | - | NEW | 13 | KRAZY Pitbull Feat. Lil Jon | INR/UMA | USUM70957024 |
| 14 | 12 | 11 | 3 | CRACK A BOTTLE Eminem Feat. Dr. Dre & 50 Cent | INR/UMA | 00602517997585 |
| 15 | 16 | 8 | 12 | DIVA Beyonce | SME | 00888880962171 |
| 16 | 13 | 22 | 1 | BURN Jessica Mauboy ▲ | SME | 88697436282 |
| 17 | 14 | 6 | 14 | WELCOME TO THE WORLD Kevin Rudolf Feat. Kid Cudi | UNI/UMA | 00602527022574 |
| 18 | 15 | 11 | 5 | BOTTLE POP Pussycat Dolls Feat. Snoop Dogg | INR/UMA | 1798900 |
| 19 | 18 | 30 | 4 | RIGHT NOW (NA NA NA) Akon ● | UNI/UMA | 1789712 |
| 20 | 17 | 62 | 1 | LOW Flo Rida Feat. T-Pain ▲ 2 | ATL/WAR | 7567899473 |
| 21 | 19 | 24 | 1 | LIVE YOUR LIFE T.I. Feat. Rihanna | ATL/WAR | 7567896970 |
| 22 | 20 | 19 | 8 | FREEZE T-Pain Feat. Chris Brown | JVE/SME | 88697434952 |
| 23 | 22 | 7 | 21 | MAD Ne-Yo | DFJ/UMA | 00602517956629 |
| 24 | 24 | 23 | 1 | IF I WERE A BOY Beyonce | SME | 00888880731005 |
| 25 | 25 | 22 | 6 | WHATEVER YOU LIKE T.I. | ATL/WAR | A10302B0000648 |
| 26 | 28 | 31 | 4 | IN THE AYER Flo Rida Feat. Will.I.Am | ATL/WAR | 7567897035 |
| 27 | 23 | 22 | 8 | HEARTLESS Kanye West | DFJ/UMA | USUM70840511 |
| 28 | 26 | 22 | 3 | RUNNING BACK Jessica Mauboy Feat. Flo Rida ▲ 2 | SME | 88697411792 |
| 29 | 27 | 31 | 1 | DISTURBIA Rihanna ▲ | DFJ/UMA | 1787139 |
| 30 | 31 | 44 | 2 | FOREVER Chris Brown ▲ | JVE/SME | 88697334012 |
| 31 | - | R/E | 28 | SPACESHIP Phrase | UMA | 00602527018997 |
| 32 | 37 | 2 | 32 | I LOVE COLLEGE Asher Roth | UMA | 00602527011462 |
| 33 | - | R/E | 2 | TAKE A BOW Rihanna ▲ | DFJ/UMA | 1774172 |
| 34 | 29 | 30 | 1 | I HATE THIS PART The Pussycat Dolls ● | INR/UMA | 1788460 |
| 35 | 21 | 4 | 21 | RETURN THE FAVOR Keri Hilson Feat. Timbaland | INR/UMA | 00602517923812 |
| 36 | 35 | 31 | 4 | LOVE LOCKDOWN Kanye West ● | UMA | 00602517879331 |
| 37 | 30 | 45 | 1 | WHEN I GROW UP The Pussycat Dolls ▲ | INR/UMA | 1779570 |
| 38 | 36 | 49 | 1 | NO AIR Jordin Sparks Duet With Chris Brown ▲ | JVE/SME | 88697317092 |
| 39 | 34 | 69 | 2 | CRANK THAT Soulja Boy Tell 'Em ▲ | INR/UMA | 1752704 |
| 40 | 32 | 43 | 1 | CLOSER Ne-Yo ▲ | DFJ/UMA | 1776445 |

© 1990 - 2009 Australian Recording Industry Association Ltd.

Strictly no reproduction, communication or other exploitation of the ARIA Report or its contents without written approval by ARIA. To request permission to reprint, publish or otherwise utilise the ARIA Report or any ARIA Chart(s), please contact ARIA on (02) 8569 1144



#1 Urban Album this week

ARIA Urban Album Chart - Week Commencing 27th April 2009

| TW | LW | TI | HP | TITLE: Artist | Co. | Cat. No. |
|----|----|-----|----|---|----------|-------------|
| 1 | 3 | 23 | 1 | I AM... SASHA FIERCE Beyoncé ▲ | COL/SME | 88697409802 |
| 2 | 2 | 3 | 1 | R.O.O.T.S. (ROUTE OF OVERCOMING THE STRUGGLE) Flo Rida | ATL/WAR | 7567896624 |
| 3 | 1 | 3 | 1 | RNB SUPERCLUB: GREATEST CLUB HITS 2001-2009 Various | WARNER | 5186533782 |
| 4 | 4 | 22 | 2 | BEEN WAITING Jessica Mauboy ▲ | SME | 88697431782 |
| 5 | 10 | 2 | 5 | FAST & FURIOUS Soundtrack | INR/UMA | 2702135 |
| 6 | 6 | 20 | 3 | FREEDOM Akon | UNI/UMA | 1793437 |
| 7 | 7 | 13 | 1 | BLAZIN' 2009 Various - mixed by DJ Nino Brown | UMA | 5315717 |
| 8 | 5 | 129 | 1 | ALRIGHT, STILL Lily Allen ▲ | CPT/EMI | 3717392 |
| 9 | 9 | 31 | 1 | DOLL DOMINATION 2.0 Pussycat Dolls ● | INR/UMA | 2705553 |
| 10 | 8 | 30 | 2 | PAPER TRAIL T.I. ● | ATL/WAR | 7567898198 |
| 11 | - | NEW | 11 | JIGSAW Lady Sovereign | LIB/UMA | LIB73CD |
| 12 | 13 | 131 | 1 | FUTURE SEX/LOVE SOUNDS Justin Timberlake ▲ 5 | JVE/SME | 88697179262 |
| 13 | 11 | 22 | 10 | GREATEST HITS The Notorious B.I.G. | BAD/WAR | 7567899963 |
| 14 | 14 | 22 | 2 | 808S & HEARTBREAK Kanye West ● | DFJ/UMA | 1787279 |
| 15 | 12 | 98 | 1 | GOOD GIRL GONE BAD Rihanna ▲ 3 | DFJ/UMA | 1771728 |
| 16 | 16 | 52 | 1 | FLYING COLOURS Bliss N Eso | ILL/UMA | ILL007CD |
| 17 | 15 | 61 | 1 | STEP UP 2: THE STREETS Soundtrack ● | ATL/WAR | 7567899545 |
| 18 | 18 | 10 | 5 | CRAVE: THE LOVE EDITION Various - mixed by DJ Havana Brown | UMA | 5316573 |
| 19 | 20 | 49 | 10 | BROTHERS GRIMM Drapht | OBESE | OBR057 |
| 20 | 17 | 31 | 2 | YEAR OF THE GENTLEMAN Ne-Yo | DFJ/UMA | 1785907 |
| 21 | 21 | 21 | 12 | THR33 RINGZ T-Pain | JVE/SME | 88697370222 |
| 22 | 19 | 76 | 2 | AS I AM Alicia Keys ▲ | J/SME | 88697386422 |
| 23 | 22 | 49 | 7 | SANTOGOLD Santogold | INERTIA | DWT002 |
| 24 | 27 | 77 | 1 | EXCLUSIVE Chris Brown ▲ 2 | JVE/SME | 88697315822 |
| 25 | 24 | 133 | 1 | PCD The Pussycat Dolls ▲ 3 | A&M/UMA | 9858644 |
| 26 | 26 | 131 | 1 | CURTAIN CALL: THE HITS Eminem ▲ 3 | INR/UMA | 9889084 |
| 27 | 28 | 29 | 14 | A MIND OF MY OWN Pez | INERTIA | SOLM8003 |
| 28 | 36 | 2 | 28 | JENNIFER HUDSON Jennifer Hudson | ARI/SME | 88697361682 |
| 29 | 23 | 55 | 3 | MAIL ON SUNDAY Flo Rida ● | ATL/WAR | 7567899494 |
| 30 | 37 | 5 | 28 | INTUITION Jamie Foxx | J/SME | 88697412942 |
| 31 | - | NEW | 31 | JUST GO Lionel Richie | ISL/UMA | 1782745 |
| 32 | 25 | 11 | 9 | NOTORIOUS (MUSIC FROM AND INSPIRED BY THE ORIGINAL MOTION PICTURE) The Notorious B.I.G. | BAD/WAR | 7567896935 |
| 33 | - | R/E | 24 | THE SPIRIT OF APOLLO N.A.S.A. | ANTI/SHK | E87001-2 |
| 34 | - | R/E | 6 | LUPE FIASCO'S THE COOL Lupe Fiasco | ATL/WAR | 7567899599 |
| 35 | 33 | 108 | 1 | TIMBALAND PRESENTS: SHOCK VALUE Timbaland ▲ 3 | INR/UMA | 1744716 |
| 36 | 34 | 147 | 1 | #1'S Destiny's Child ▲ | COL/SME | 82876740332 |
| 37 | 40 | 17 | 12 | JORDIN SPARKS Jordin Sparks ● | JVE/SME | 88697187522 |
| 38 | - | R/E | 22 | NEW JACK CITY II Bow Wow | COL/SME | 88697124712 |
| 39 | - | R/E | 1 | GRADUATION Kanye West ● | DFJ/UMA | 1745502 |
| 40 | - | R/E | 1 | THE HARD ROAD Hilltop Hoods ▲ | OBESE | OBR042 |

© 1990 - 2009 Australian Recording Industry Association Ltd.

Strictly no reproduction, communication or other exploitation of the ARIA Report or its contents without written approval by ARIA. To request permission to reprint, publish or otherwise utilise the ARIA Report or any ARIA Chart(s), please contact ARIA on (02) 8569 1144

ARIA Club Tracks - Week Commencing 27th April 2009

| TW | LW | TI | HP | TITLE:Artist | Co. |
|----|----|-----|----|--|----------|
| 1 | 3 | 11 | 1 | NOW YOU'RE GONE (Lorne Padman & Christian Luke / Chris Fraser / Feenixpawl / Club mix) Juan Kidd & Felix Baumgartner | ONE/SME |
| 2 | 2 | 9 | 2 | RIGHT IN THE NIGHT (Club Vocal Dub / Vandalism mix) Sgt Slick | VIC/UMA |
| 3 | 1 | 14 | 1 | RIVERSIDE (Original / Tom Piper mix) Sidney Samson | NEON/WAR |
| 4 | 6 | 3 | 4 | SHOW ME LOVE (Extended mix) Steve Angello & Laidback Luke Feat. Robin S | HUS/UMA |
| 5 | 5 | 4 | 5 | I'M NOT ALONE (deadmau5 mix) Calvin Harris | COL/SME |
| 6 | 8 | 10 | 5 | TOUCH MY HORN Jesse Rose | HUS/UMA |
| 7 | 4 | 10 | 4 | TIMES LIKE THESE (EDX / Marco Demark & Dave Manna mix) Albin Myers | NEON/WAR |
| 8 | 9 | 5 | 8 | \$PEND MY MONEY (Bass Kleph mix) Bass Kleph & Stellar | VAC/XXX |
| 9 | 13 | 3 | 9 | LEAVE THE WORLD BEHIND Axwell / Angello / Ingresso / Laidback luke | XXX |
| 10 | 20 | 3 | 10 | BUCCI BAG (Ian Carey / Reckless mix) Vandalism | VIC/UMA |
| 11 | 7 | 15 | 1 | WE ARE THE PEOPLE (Sam La More / Shapeshifters mix) Empire Of The Sun | EMI |
| 12 | - | NEW | 12 | SCARED OF ME Fedde Le Grand | HUS/UMA |
| 13 | 10 | 6 | 10 | WORLD AS YOU KNOW IT (Denzal Park / Luke Chable mix) Todd Watson & Jason Singh | NEON/WAR |
| 14 | 36 | 2 | 14 | KEEP CONTROL PLUS (Fedde Le Grande / Greg Salto mix) Sono | XXX |
| 15 | 12 | 10 | 7 | EVERYBODY (Club mix) Rudenko | HUS/UMA |
| 16 | 14 | 10 | 8 | LET IT RAIN (Trevor Lovey's / Chris Fraser / The Only mix) Tyken | ONE/SME |
| 17 | 11 | 12 | 2 | WHEREVER (Vandalism / Damien Wilson mix) Stafford Brothers vs Hoxton Whores Feat. Frank Stafford | HUS/UMA |
| 18 | 26 | 2 | 18 | SHOES (Green Velvet / Bang Gang Deejays mix) Tiga | LIB/UMA |
| 19 | 16 | 3 | 16 | ALL STARS (Tom Piper / Aston Shuffle / Cryptonites mix) Grafton Primary | XXX |
| 20 | 27 | 2 | 20 | COME ON Javi Mula | VIC/UMA |
| 21 | 23 | 3 | 21 | SHAKE IT DOWN Laidback Luke & A-Trak | HUS/UMA |
| 22 | 15 | 8 | 13 | STEREO FLO (The Drill / Neon Stereo / Super Mal / Felix Baumgartner mix) Dada / Obernik & Harris | HUS/UMA |
| 23 | 19 | 8 | 16 | EVERY YOU EVERY ME (Kam Denny & Paul Zala / Mic Newman mix) Criss Sol & J Foster | VIC/UMA |
| 24 | 34 | 4 | 24 | DEVIL TOY (Main mix) Hoxton Whores | XXX |
| 25 | 17 | 13 | 5 | U (Denzal Park / Henrique & Danny Merx mix) Inaya Day Meets Antoine Dessante | VEL/XXX |
| 26 | - | R/E | 16 | RUN FOR COVER Mastiksoul | HUS/UMA |
| 27 | 21 | 9 | 11 | IF I KNOW YOU (Tom Middleton mix) The Presets | MOD/UMA |
| 28 | 28 | 8 | 15 | LET THE BASS KICK (Silvio Ecom / Joachim Garraud mix) Chuckie | VIC/UMA |
| 29 | 18 | 5 | 18 | MASH IT UP The Young Punx | CSR/UMA |
| 30 | 48 | 8 | 30 | RUNNIN' (Mark Knight & Funkagenda mix) Doman & Gooding Feat. Dru | XXX |
| 31 | 25 | 5 | 19 | REMEMBER Funkerman | ONE/SME |
| 32 | - | NEW | 32 | RAP DAS ARMAS (Denzal Park mix) Cidinho | XXX |
| 33 | 42 | 7 | 33 | IS IT COLD (Baby Gee mix) TyDi | SPA/XXX |
| 34 | 33 | 7 | 18 | WTF (Nadastro mix) Tittsworth | VIC/UMA |
| 35 | 32 | 6 | 24 | ALAMO (TV Rock / Lorne Padman & Christian Luke mix) Dirty South | VIC/UMA |
| 36 | 29 | 10 | 14 | THE PEOPLE (Eric Prydz mix) Sebastien Leger | XXX |
| 37 | 44 | 4 | 32 | CYAN Arno Cost | HUS/UMA |
| 38 | 22 | 14 | 3 | CAN'T HOLD BACK (TV Rock & Luke Chable / Stafford Brothers / Christian Luke mix) Kaz James Feat. Macy Gray | ONE/SME |
| 39 | 35 | 11 | 15 | UNDER THE SUN (Kidida mix) Herve | ONE/SME |
| 40 | 40 | 5 | 32 | CAN'T GET ENOUGH (Henrik B mix) Sousearcher | XXX |
| 41 | 24 | 14 | 6 | GREENLIGHT (Stafford Brothers / Feenixpawl / Ben Macklin mix) Herd & Macklin Feat. Steve Edwards | ONE/SME |
| 42 | 49 | 4 | 42 | ENJOY (Crookers mix) The Outhere Brothers | ONE/SME |
| 43 | 37 | 5 | 22 | ON IT! Mortem Breum | HUS/UMA |
| 44 | 46 | 14 | 15 | FRUIT MACHINE (Dave Spoon mix) The Ting Tings | COL/SME |
| 45 | 50 | 10 | 27 | WE ARE PERFECT (Cristian Marchi mix) Cristian Marchi | VIC/UMA |
| 46 | 45 | 6 | 35 | MIAMI TO ATLANTA Pryda | XXX |
| 47 | 43 | 6 | 40 | UP Alex Kenji | XXX |
| 48 | 38 | 2 | 38 | BOUNCE (A-Trak mix) MSTRKRFT | ETC/UMA |
| 49 | 41 | 2 | 41 | WORLD GO ROUND Mobin Master | XXX |
| 50 | - | R/E | 25 | MUSIC MATTERS (Mark Knight mix) Faithless Feat. Cass Foxx | XXX |

ARIA Hitseekers - Week Commencing 27th April 2009

Singles

| TW | LW | TI | HP | ARTIST Title | Distributor | Cat. No. |
|----|----|-----|----|---|-------------|----------------|
| 1 | 7 | 4 | 1 | SIA Soon We'll Be Found | INERTIA | GBPNH0700010 |
| 2 | 2 | 4 | 1 | SIA Buttons | INERTIA | GBPNH0700014 |
| 3 | 3 | 6 | 1 | FLORENCE & THE MACHINE Dog Days | UMA | 00602527044941 |
| 4 | 10 | 2 | 4 | DEMI LOVATO La La Land | UMA | 00050087144265 |
| 5 | 5 | 36 | 1 | M.I.A. Paper Planes: Homeland Security Remixes | INE | XLT328 |
| 6 | - | R/E | 5 | PHRASE Spaceship | UMA | 00602527018997 |
| 7 | 9 | 2 | 7 | ASHER ROTH I Love College | UMA | 00602527011462 |
| 8 | 6 | 12 | 3 | DRAPHT Jimmy Recard | OBESE | AUOB10800399 |
| 9 | 1 | 4 | 1 | KERI HILSON FEAT. TIMBALAND Return The Favor | UMA | 00602517923812 |
| 10 | 14 | 12 | 4 | EMILIANA TORRINI Jungle Drum | SHK | GBCVZ0802439 |
| 11 | 8 | 15 | 3 | STIFF DYLAN'S Ultraviolet | SME | G010001647292N |
| 12 | 4 | 12 | 3 | HEY MONDAY Homecoming | SME | 88697462852 |
| 13 | 20 | 27 | 4 | TAME IMPALA Tame Impala (EP) | UMA | MODEP023 |
| 14 | - | R/E | 1 | PEZ The Festival Song | INERTIA | AUSR20800035 |
| 15 | 12 | 13 | 7 | THE TEMPER TRAP Sweet Disposition | UMA | LMCD0023 |
| 16 | 11 | 6 | 9 | SHONTELLE T-Shirt | UMA | 00602517791404 |
| 17 | 19 | 5 | 15 | THE TEMPER TRAP Science Of Fear | UMA | 09341004004382 |
| 18 | 15 | 9 | 5 | ZAC EFRON & VANESSA HUDGENS Can I Have This Dance | UMA | EMIDD0931478 |
| 19 | 13 | 14 | 7 | ASHLEY TISDALE & LUCAS GRABEEL I Want It All | UMA | EMIDD0922602 |
| 20 | 16 | 11 | 2 | ZAC EFRON & CORBIN BLEU The Boys Are Back | UMA | EMIDD0931481 |

Albums

| TW | LW | TI | HP | ARTIST Title | Distributor | Cat. No. |
|----|----|-----|----|---|-------------|-------------|
| 1 | 3 | 24 | 1 | THE SCRIPT The Script | SME | 88697523182 |
| 2 | 5 | 3 | 2 | BAT FOR LASHES Two Suns | EMI | 6957802 |
| 3 | - | NEW | 3 | LADY SOVEREIGN Jigsaw | UMA | LIB73CD |
| 4 | 7 | 4 | 4 | 3OH!3 Want | WAR | 7567899329 |
| 5 | 8 | 5 | 1 | FEVER RAY Fever Ray | UMA | ETCETCD008 |
| 6 | 14 | 28 | 1 | CHILDREN COLLIDE The Long Now | UMA | 1779565 |
| 7 | - | NEW | 7 | MANCHESTER ORCHESTRA Mean Everything To Nothing | SME | 88697359342 |
| 8 | - | NEW | 8 | BILL CALLAHAN Sometimes I Wish We Were An Eagle | EMI | URA286 |
| 9 | - | NEW | 9 | WOLF & CUB Science And Sorcery | INERTIA | DASH011CD |
| 10 | 12 | 5 | 2 | THE DECEMBERISTS The Hazards Of Love | EMI | 2147102 |
| 11 | - | R/E | 9 | DEREK TRUCKS Already Free | SME | 88697462052 |
| 12 | - | R/E | 1 | THE WHITEST BOY ALIVE Rules | INERTIA | PODCD0729 |
| 13 | 15 | 19 | 5 | SECONDHAND SERENADE A Twist In My Story | UMA | LIB62CDX |
| 14 | 17 | 4 | 6 | PETER BJORN AND JOHN Living Thing | SHK | WEBB202CD |
| 15 | - | R/E | 1 | T-PAIN Thr33 Ringz | SME | 88697370222 |
| 16 | 6 | 9 | 1 | DAN AUERBACH Keep It Hid | WAR | 7559798385 |
| 17 | - | NEW | 17 | THE ANSWER Everyday Demons | SME | 88697514192 |
| 18 | - | NEW | 18 | BURT BACHARACH WITH THE SYDNEY SYMPHONY ORCHESTRA Live At The Sydney Opera House | UMA | LIB69CD |
| 19 | - | R/E | 1 | SANTOGOLD Santogold | INERTIA | DWT002 |
| 20 | 16 | 7 | 7 | ELBOW The Seldom Seen Kid | UMA | 1764098 |

Honour Roll:

(Congratulations to the following who reached the top 50 for the first time).

| Chart | Deb | ARTIST Title | DIST | Catalogue No. |
|---------|-----|----------------------------------|---------|---------------|
| Singles | 38 | PITBULL Krazy | INR/UMA | USUM70957024 |
| Albums | 14 | SILVERSUN PICKUPS Swoon | WARNER | 9362497810 |
| Albums | 42 | ERIC HUTCHINSON Sounds Like This | WARNER | 9362498720 |
| Albums | 45 | THE LONELY ISLAND Incredibad | UNI/UMA | 1796904 |

ARIA Country Albums - Week Commencing 27th April 2009



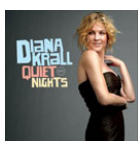
| TW | LW | TI | HP | TITLE:Artist | Co. | Cat. No. |
|----|----|-----|----|---|---------|-------------|
| 1 | 1 | 23 | 1 | FEARLESS Taylor Swift ▲ | UMA | 1799119 |
| 2 | 2 | 3 | 2 | DEFYING GRAVITY Keith Urban ● | CPT/EMI | 2357512 |
| 3 | - | NEW | 3 | I LOVE THIS PLACE Troy Cassar-Daley | LIB/UMA | LMCD0046 |
| 4 | 3 | 5 | 2 | SO COUNTRY 2009 Various | SME | 88697467352 |
| 5 | 4 | 66 | 1 | COWBOY TOWN Brooks & Dunn ● | ARI/SME | 88697507422 |
| 6 | 6 | 53 | 1 | RATTLIN' BONES Kasey Chambers & Shane Nicholson ▲ | LIB/UMA | LMCD0005 |
| 7 | 5 | 7 | 2 | HELL OF A RIDE Adam Brand | CB/SHK | 064CDCB |
| 8 | 7 | 73 | 2 | GREATEST HITS: 18 KIDS Keith Urban ▲ | CAP/EMI | 5155542 |
| 9 | 11 | 50 | 4 | THE GREATEST HITS COLLECTION Brooks & Dunn ▲ | ARI/SME | 07822188522 |
| 10 | 15 | 7 | 3 | 40 SHADES OF GREEN Various | BGJ/SME | 88697456452 |
| 11 | 10 | 51 | 3 | RAISING SAND Robert Plant & Alison Krauss | DEC/UMA | 4780199 |
| 12 | 8 | 29 | 4 | TAYLOR SWIFT Taylor Swift | UMA | 1787469 |
| 13 | 9 | 9 | 2 | CREAM OF COUNTRY VOL. 12 Various | SME | 88697435072 |
| 14 | 16 | 228 | 1 | THE ESSENTIAL JOHNNY CASH Johnny Cash ▲ 2 | COL/SME | C2K86290 |
| 15 | 12 | 128 | 1 | TAKING THE LONG WAY Dixie Chicks ▲ 2 | COL/SME | 82876830802 |
| 16 | - | R/E | 3 | THE VERY BEST OF DOLLY PARTON Dolly Parton | SME | 88697148872 |
| 17 | 13 | 40 | 8 | THE ESSENTIAL John Denver | RCA/SME | 88697070082 |
| 18 | 14 | 65 | 1 | THE ULTIMATE HITS Garth Brooks ▲ | SME | 88697195522 |
| 19 | 19 | 46 | 1 | GOOD TIME Alan Jackson | ARI/SME | 88697199432 |
| 20 | - | R/E | 2 | THE PLATINUM COLLECTION John Williamson ● | CAP/EMI | 3736262 |

ARIA Classical - Week Commencing 27th April 2009



| TW | LW | TI | HP | TITLE:Artist | Co. | Cat. No. |
|----|----|-----|----|--|---------|-------------|
| 1 | - | NEW | 1 | PASSIONE Paul Potts | SME | 88697474392 |
| 2 | 12 | 2 | 2 | MASTERPIECES Andre Rieu | UNI/UMA | 5318140 |
| 3 | 1 | 9 | 1 | YOU'LL NEVER WALK ALONE David Hobson & Teddy Tahu Rhodes | ACL/UMA | 4763284 |
| 4 | 2 | 21 | 2 | THE PRIESTS The Priests ● | EPI/SME | 88697339692 |
| 5 | 17 | 58 | 1 | ONE CHANCE Paul Potts ▲ | SME | 88697215992 |
| 6 | 3 | 24 | 1 | THE PROMISE II Divo ▲ | SME | 88697424342 |
| 7 | - | NEW | 7 | HANDEL: THE TOP 40 - HIS GREATEST HITS Various | ACL/UMA | 4763335 |
| 8 | 6 | 125 | 1 | SIEMPRE II Divo ▲ 2 | SME | 88697015522 |
| 9 | 4 | 78 | 1 | VIVERE: THE BEST OF ANDREA BOCELLI Andrea Bocelli ▲ | UNI/UMA | 1746680 |
| 10 | 5 | 20 | 2 | LIVE IN AUSTRALIA Andre Rieu ● | UNI/UMA | 1795007 |
| 11 | 9 | 24 | 2 | INCANTO Andrea Bocelli ● | DEC/UMA | 4781071 |
| 12 | 7 | 14 | 2 | CARDIO CLASSICS: ORCHESTRAL WORKOUT! Various | ACL/UMA | 4763223 |
| 13 | 8 | 113 | 1 | THE PHANTOM OF THE OPERA Soundtrack ● | SME | 0935229000 |
| 14 | - | NEW | 14 | AMAZING GRACE Lesley Garrett | UMA | 4766493 |
| 15 | 10 | 153 | 1 | ANCORA II Divo ▲ 4 | SME | 82876738712 |
| 16 | 11 | 175 | 1 | IL DIVO II Divo ▲ 3 | SME | 82876676542 |
| 17 | 18 | 428 | 1 | ROMANZA Andrea Bocelli ▲ 5 | PHI/UMA | 4564562 |
| 18 | - | R/E | 2 | NOSTALGICA The Ten Tenors | WARNER | 5144298172 |
| 19 | 20 | 2 | 19 | THE NUMBER ONE CLASSICAL ALBUM 2009 Various | ACL/UMA | 4802016 |
| 20 | 13 | 56 | 1 | THE 100 MOST BEAUTIFUL MELODIES Andre Rieu ● | UNI/UMA | 4800849 |

ARIA Jazz & Blues Albums - Week Commencing 27th April 2009



| TW | LW | TI | HP | TITLE:Artist | Co. | Cat. No. |
|----|----|-----|----|--|----------|-------------|
| 1 | 1 | 4 | 1 | QUIET NIGHTS Diana Krall | VE/UMA | 1793110 |
| 2 | 4 | 7 | 1 | BARE BONES Madeleine Peyroux | UMA | 6132722 |
| 3 | 3 | 25 | 1 | BLACKBIRD: THE MUSIC OF LENNON AND MCCARTNEY Katie Noonan | SME | 88697394382 |
| 4 | 7 | 98 | 1 | CALL ME IRRESPONSIBLE Michael Buble ▲ 5 | RPS/WAR | 9362499989 |
| 5 | 6 | 27 | 1 | JUNGLE BLUES C.W. Stoneking | SHOCK | KHR-02 |
| 6 | 10 | 2 | 6 | BITTERSWEET Kate Ceberano | ACL/UMA | 2701619 |
| 7 | 13 | 179 | 1 | CAUGHT IN THE ACT Michael Buble ● | WARNER | 7599386622 |
| 8 | - | NEW | 8 | MY ONE AND ONLY THRILL Melody Gardot | UNI/UMA | 1796782 |
| 9 | 17 | 85 | 2 | THE VERY BEST OF DIANA KRALL Diana Krall | VE/UMA | 1739968 |
| 10 | 11 | 298 | 1 | MICHAEL BUBLE Michael Buble ▲ 7 | RPS/WAR | 9362489152 |
| 11 | 12 | 217 | 1 | IT'S TIME Michael Buble ▲ 5 | RPS/WAR | 9362489462 |
| 12 | 18 | 6 | 9 | EASY VIRTUE Soundtrack | DEC/UMA | 4781417 |
| 13 | 16 | 10 | 2 | EASY COME, EASY GO Marianne Faithfull | SHOCK | CTX458CD |
| 14 | 15 | 358 | 1 | COME AWAY WITH ME Norah Jones ▲ 9 | EMI | 5820672 |
| 15 | 2 | 4 | 2 | GET ONBOARD Eric Bibb | ABC/UMA | 1790743 |
| 16 | 5 | 4 | 5 | HOW BIG CAN YOU GET?: THE MUSIC OF CAB CALLOWAY Big Bad Voodoo Daddy | EMI | 0799252 |
| 17 | - | R/E | 5 | C.W. STONEKING'S KING HOKUM C.W. Stoneking | INERTIA | KHR-01 |
| 18 | 9 | 3 | 9 | THE HARD WAY James Hunter | CONC/UMA | 7231398 |
| 19 | 20 | 348 | 1 | KIND OF BLUE Miles Davis ▲ 2 | COL/SME | 88697335522 |
| 20 | - | R/E | 3 | CARELESS LOVE Madeleine Peyroux ● | EMA/UMA | 9823583 |

© 1990 - 2009 Australian Recording Industry Association Ltd.

Strictly no reproduction, communication or other exploitation of the ARIA Report or its contents without written approval by ARIA.
To request permission to reprint, publish or otherwise utilise the ARIA Report or any ARIA Chart(s), please contact ARIA on (02) 8569 1144



#1 Music DVD this week

ARIA Top 40 Music DVD - Week Commencing 27th April 2009

| TW | LW | TI | HP | TITLE Artist | Co. | Cat. No. |
|-------------------------------------|-----|-----|----|---|----------|-------------|
| 1 | 1 | 5 | 1 | LIVE IN LONDON Leonard Cohen ▲ | COL/SME | 88697405039 |
| 2 | 2 | 126 | 1 | P!NK - LIVE IN EUROPE P!nk ▲ 7 | SME | 88697286299 |
| 3 | 5 | 20 | 1 | LIVE IN AUSTRALIA Andre Rieu ▲ 21 | UNI/UMA | 1793514 |
| 4 | 3 | 2 | 3 | TRIPLE J HOTTEST 100 VOLUME 16 Various | ABC/UMA | 5315972 |
| 5 | 4 | 90 | 1 | LIVE FROM WEMBLEY ARENA P!nk ▲ 10 | LAF/SME | 88697109929 |
| 6 | 8 | 147 | 1 | #1'S Michael Jackson ▲ 10 | EPI/SME | 88697278039 |
| 7 | 7 | 62 | 5 | LIVE IN BUCHAREST - THE DANGEROUS TOUR Michael Jackson ▲ 4 | EPI/SME | 88697107499 |
| 8 | 14 | 5 | 8 | IN CONCERT AT ARMAGH CATHEDRAL The Priests ● | EPI/SME | 88697464219 |
| 9 | 13 | 10 | 1 | DANCING THROUGH THE SKIES Andre Rieu ▲ 2 | UMA | 1787494 |
| 10 | 6 | 69 | 6 | THE CONCERT IN CENTRAL PARK Simon & Garfunkel ▲ 5 | SME | 88697286319 |
| 11 | 9 | 224 | 3 | NEIL DIAMOND'S GREATEST HITS LIVE Neil Diamond ▲ 9 | COL/SME | CVD49014 |
| 12 | 10 | 148 | 3 | HIGHWAYMEN LIVE The Highwaymen ▲ 4 | COL/SME | 82876748989 |
| 13 | 17 | 12 | 2 | LIVE IN MAASTRICHT II Andre Rieu ● | UMA | 1790573 |
| 14 | 11 | 50 | 1 | FUTURESEX/LOVESHOW: LIVE FROM MADISON SQUARE GARDEN Justin Timberlake ▲ 9 | JVE/SME | 88697069569 |
| 15 | 12 | 19 | 6 | IN CONCERT: TEA FOR THE TILLERMAN Cat Stevens | SHOCK | DAVID0668 |
| 16 | - | NEW | 16 | LIVE IN CHICAGO Stevie Nicks | RPS/WAR | 9362498621 |
| 17 | 15 | 27 | 4 | THE MAN IN BLACK: JOHNNY CASH LIVE IN DENMARK Johnny Cash ▲ 3 | SME | 88697359509 |
| 18 | 18 | 40 | 12 | COLDPLAY LIVE 2003 Coldplay ▲ 4 | CAP/EMI | 4908049 |
| 19 | 24 | 7 | 19 | THE BEYONCE EXPERIENCE LIVE Beyonce ▲ | COL/SME | 88697180879 |
| 20 | 23 | 6 | 5 | LIVE AT LAST Stevie Wonder | MO/UMA | 1799245 |
| 21 | 21 | 114 | 1 | ONE NIGHT ONLY! ROD STEWART LIVE AT ROYAL ALBERT HALL Rod Stewart ▲ 6 | J/SME | 88697371369 |
| 22 | 20 | 55 | 1 | PLUG ME IN AC/DC ▲ 6 | ALB/SME | 88697143019 |
| 23 | 16 | 74 | 4 | THE ULTIMATE COLLECTION Billy Joel ▲ 4 | COL/SME | 88697192469 |
| 24 | 19 | 10 | 4 | LIVE AT THE PARADISO - AMSTERDAM Live | SME | 88697375529 |
| 25 | 22 | 45 | 5 | LIVE AT THE GREEK II Divo ▲ 4 | SME | 88697015659 |
| 26 | 26 | 60 | 1 | '68 COMEBACK SPECIAL Elvis Presley ▲ 5 | SME | 88697339869 |
| 27 | 32 | 55 | 4 | ELVIS: THE KING OF ROCK 'N' ROLL Elvis Presley ▲ | RCA/SME | 88697174959 |
| 28 | 25 | 32 | 1 | GREATEST HITS Britney Spears ▲ 3 | JVE/SME | 88697278009 |
| 29 | 28 | 40 | 1 | THE LAST TIME John Farnham ▲ 5 | SME | 74321969019 |
| 30 | 30 | 101 | 3 | TOP OF THE WORLD TOUR LIVE Dixie Chicks ▲ 6 | COL/SME | 88697359789 |
| 31 | 27 | 21 | 13 | THE POISON: LIVE AT BRIXTON Bullet For My Valentine ▲ | SME | 88697464369 |
| 32 | 34 | 31 | 2 | WEMBLEY LIVE Foo Fighters ▲ | RCA/SME | 88697355779 |
| 33 | - | R/E | 4 | LIVE AT THE COLISEUM II Divo | SME | 88697399689 |
| 34 | 29 | 12 | 21 | THE ULTIMATE COLLECTION Whitney Houston ▲ | ARI/SBME | 88697192989 |
| 35 | 35 | 24 | 1 | LIVE IN LAS VEGAS Britney Spears ▲ | JVE/SME | 88697355699 |
| 36 | 40 | 5 | 17 | LIVE AT KILBURN 1977 The Who | WARNER | 5186513369 |
| 37 | 33 | 60 | 3 | ALL THE WAY... A DECADE OF SONG & VIDEO Celine Dion ▲ 2 | SME | 88697455829 |
| 38 | - | R/E | 1 | ANDRE RIEU AT SCHONBRUNN WIENER Andre Rieu ▲ 10 | UMA | 1705763 |
| 39 | - | R/E | 1 | NEW YORK MEMORIES Andre Rieu ▲ 8 | UNI/UMA | 1713579 |
| 40 | 36 | 14 | 5 | LOVE, PAIN & THE WHOLE CRAZY WORLD TOUR LIVE Keith Urban ▲ | CPT/EMI | 2434679 |
| These were in the top 40 last week: | | | | | | |
| 31 | 138 | 3 | | HITS OUT OF HELL Meat Loaf ▲ 6 | SME | 88697286279 |
| 37 | 81 | 4 | | 20,000 WATT RSL - THE MIDNIGHT OIL COLLECTION Midnight Oil ▲ 2 | COL/SME | 201343.9 |
| 38 | 18 | 5 | | ESSENTIAL 80'S Various | EMI | 4928859 |
| 39 | 76 | 1 | | ALOHA FROM HAWAII Elvis Presley ▲ 5 | RCA/SME | 88697342299 |

UK Chart - Week Commencing 27th April 2009

Singles

| TW | LW | TITLE | Artist |
|----|----|-------------------------------------|--------------------------------------|
| 1 | - | NUMBER 1 | Tinchy Stryder Feat. N-Dubz |
| 2 | 2 | IN FOR THE KILL | La Roux |
| 3 | 1 | I'M NOT ALONE | Calvin Harris |
| 4 | 3 | POKER FACE | Lady GaGa |
| 5 | 8 | WE MADE YOU | Eminem |
| 6 | 4 | JAI HO! (YOU ARE MY DESTINY) | A.R. Rahman Feat. The Pussycat Dolls |
| 7 | 5 | LOVE SEX MAGIC | Ciara Feat. Justin Timberlake |
| 8 | 6 | HALO | Beyonce |
| 9 | 10 | NOT FAIR | Lily Allen |
| 10 | 7 | DON'T UPSET THE RHYTHM (GO BABY GO) | Noisettes |
| 11 | 9 | SHAKE IT | Metro Station |
| 12 | - | RUBBER LOVE | Marmaduke Duke |
| 13 | - | PLEASE DON'T LEAVE ME | P!nk |
| 14 | 11 | RIGHT ROUND | Flo Rida Feat. Ke\$ha |
| 15 | 12 | TAKIN' BACK MY LOVE | Enrique Iglesias Feat. Ciara |
| 16 | - | THE CLIMB | Miley Cyrus |
| 17 | 14 | FIELDS OF ANFIELD ROAD | Liverpool Collective / Kop Choir |
| 18 | - | WARRIOR'S DANCE | The Prodigy |
| 19 | 18 | JUST DANCE | Lady GaGa Feat. Colby O'Donis |
| 20 | - | RETURN THE FAVOR | Keri Hilson Feat. Timbaland |

Albums

| TW | LW | TITLE | Artist |
|----|----|-----------------------------|----------------------|
| 1 | 1 | THE FAME | Lady GaGa |
| 2 | - | SOUNDS OF THE UNIVERSE | Depeche Mode |
| 3 | 7 | I AM... | SASHA FIERCE Beyonce |
| 4 | 2 | ONLY BY THE NIGHT | Kings Of Leon |
| 5 | 5 | IT'S NOT ME IT'S YOU | Lily Allen |
| 6 | 10 | INVADERS MUST DIE | The Prodigy |
| 7 | - | WILD YOUNG HEARTS | Noisettes |
| 8 | 6 | FREEDOM | Akon |
| 9 | 8 | THE COLLECTION | Annie Lennox |
| 10 | - | FUNHOUSE | P!nk |
| 11 | 4 | FOOTSTEPS | Chris De Burgh |
| 12 | 3 | KINGDOM OF RUST | Doves |
| 13 | 15 | TAPESTRY | Carole King |
| 14 | 9 | SONGS FOR YOU TRUTHS FOR ME | James Morrison |
| 15 | 12 | BARE BONES | Madeleine Peyroux |
| 16 | 11 | TWO SUNS | Bat For Lashes |
| 17 | - | LADYHAWKE | Ladyhawke |
| 18 | 14 | THE CIRCUS | Take That |
| 19 | 13 | FEARLESS | Taylor Swift |
| 20 | - | BE HUMAN | Fightstar |

(Courtesy of BPI®)

US Billboard Charts – Chart Dated 27th April 2009

The Billboard Hot 100 – Top 20

| TW | LW | TITLE Artist |
|----|----|--|
| 1 | 1 | BOOM BOOM POW Black Eyed Peas |
| 2 | 2 | POKER FACE Lady GaGa |
| 3 | 3 | RIGHT ROUND Flo Rida Feat. Ke\$ha |
| 4 | 8 | THE CLIMB Miley Cyrus |
| 5 | 4 | KISS ME THRU THE PHONE Soulja Boy Tell'Em & Sammie |
| 6 | 7 | DAY 'N' NITE Kid Cudi |
| 7 | 5 | BLAME IT Jamie Foxx Feat. T-Pain |
| 8 | 6 | DEAD AND GONE T.I. Feat. Justin Timberlake |
| 9 | - | WE MADE YOU Eminem |
| 10 | 9 | YOU FOUND ME The Fray |
| 11 | 10 | GIVES YOU HELL The All-American Rejects |
| 12 | 13 | HALO Beyonce |
| 13 | 11 | MY LIFE WOULD SUCK WITHOUT YOU Kelly Clarkson |
| 14 | 12 | JUST DANCE Lady GaGa Feat. Colby O'Donis |
| 15 | 17 | SUGAR Flo Rida Feat. Wynter |
| 16 | 14 | LOVE STORY Taylor Swift |
| 17 | - | CRAZIER Taylor Swift |
| 18 | - | HOEDOWN THROWDOWN Miley Cyrus |
| 19 | - | DON'T TRUST ME 3OH!3 |
| 20 | - | SECOND CHANCE Shinedown |

The Billboard 200 – Top 20

| TW | LW | TITLE Artist |
|----|----|--|
| 1 | 2 | HANNAH MONTANA: THE MOVIE Soundtrack |
| 2 | - | FOREVER IN A DAY Day26 |
| 3 | 1 | UNSTOPPABLE Rascal Flatts |
| 4 | 8 | TWILIGHT Soundtrack |
| 5 | 5 | NOW 30 Various |
| 6 | 3 | THE LAST KISS Jadakiss |
| 7 | - | SWOON Silversun Pickups |
| 8 | 10 | THE FAME Lady GaGa |
| 9 | 4 | WIDE OPEN Jason Aldean |
| 10 | 6 | FEARLESS Taylor Swift |
| 11 | 11 | QUIET NIGHTS Diana Krall |
| 12 | 7 | DEFYING GRAVITY Keith Urban |
| 13 | 15 | IN A PERFECT WORLD... Keri Hilson |
| 14 | 13 | DARK HORSE Nickelback |
| 15 | 9 | LOTUS FLOW3R/MPLSOUND/ELIX3R Prince / Bria Valente |
| 16 | 14 | NO LINE ON THE HORIZON U2 |
| 17 | 16 | CARNIVAL RIDE Carrie Underwood |
| 18 | - | ONLY BY THE NIGHT Kings Of Leon |
| 19 | 12 | ALL I EVER WANTED Kelly Clarkson |
| 20 | - | LOVE V/S MONEY The-Dream |

(Courtesy of Billboard ©)

European Top 20 Charts - Week Commencing 27th April 2009

Singles

| TW | LW | TITLE Artist |
|----|----|--|
| 1 | 1 | POKER FACE Lady GaGa |
| 2 | 2 | RIGHT ROUND Flo Rida Feat. Ke\$ha |
| 3 | 3 | TAKIN' BACK MY LOVE Enrique Iglesias Feat. Ciara |
| 4 | 13 | BROKEN STRINGS James Morrison Feat. Nelly Furtado |
| 5 | 5 | I'M NOT ALONE Calvin Harris |
| 6 | 6 | HALO Beyonce |
| 7 | - | MEME PAS FATIGUE! Khaled & Magic System |
| 8 | 8 | TECHNOLOGY Ayo |
| 9 | 14 | CA M'ENERVE Helmut Fritz |
| 10 | 15 | IN FOR THE KILL La Roux |
| 11 | 7 | JAI HO (YOU ARE MY DESTINY) A.R. Rahman Feat. The Pussycat Dolls |
| 12 | - | LIKE A HOBO Charlie Winston |
| 13 | - | WIRE TO WIRE Razorlight |
| 14 | 11 | DAY 'N' NITE Kid Cudi Vs. Crookers |
| 15 | 10 | SHAKE IT Metro Station |
| 16 | 4 | WRONG Depeche Mode |
| 17 | 12 | JUST DANCE Lady GaGa Feat. Colby O'Donis |
| 18 | 9 | DEAD & GONE T.I. Feat. Justin Timberlake |
| 19 | - | LOVE SEX MAGIC Ciara Feat. Justin Timberlake |
| 20 | 16 | MY LIFE WOULD SUCK WITHOUT YOU Kelly Clarkson |

Albums

| TW | LW | TITLE Artist |
|----|----|--------------------------------------|
| 1 | 2 | THE FAME Lady GaGa |
| 2 | 1 | NO LINE ON THE HORIZON U2 |
| 3 | 4 | ONLY BY THE NIGHT Kings Of Leon |
| 4 | 3 | QUIET NIGHTS Diana Krall |
| 5 | 7 | NICHTS PASSIERT Silbermond |
| 6 | 6 | LIVE IN LONDON Leonard Cohen |
| 7 | 15 | I AM... SASHA FIERCE Beyonce |
| 8 | 8 | THIS IS THE LIFE Amy McDonald |
| 9 | 14 | STADTAFFE Peter Fox |
| 10 | 9 | ARTGERECHT STARWATCH Roger Cicero |
| 11 | - | FOOTSTEPS Chris De Burgh |
| 12 | 12 | FUNHOUSE P!nk |
| 13 | 11 | KINGDOM OF RUST Doves |
| 14 | 5 | ZWISCHEN HIMMEL UND ERDE Andrea Berg |
| 15 | - | MISS METEORES Olivia Ruiz |
| 16 | 19 | IT'S NOT ME, IT'S YOU Lily Allen |
| 17 | - | BLACK ICE AC/DC |
| 18 | - | INVADERS MUST DIE The Prodigy |
| 19 | - | IN DIESE STADT Christina Stuermer |
| 20 | 16 | ROCKFERRY Duffy |

(Courtesy: Billboard®)

NZ Top 20 Chart - Week Commencing 27th April 2009

Singles

| TW | LW | TITLE Artist |
|----|----|---|
| 1 | 1 | BROTHER Smashproof Feat. Gin |
| 2 | 3 | JAI HO! (YOU ARE MY DESTINY) A.R. Rahman Feat. The Pussycat Dolls |
| 3 | 2 | RIGHT ROUND Flo Rida Feat. Ke\$ha |
| 4 | - | WE MADE YOU Eminem |
| 5 | 4 | LOVE STORY Taylor Swift |
| 6 | 5 | HALO Beyonce |
| 7 | 6 | LOVE SEX MAGIC Ciara Feat. Justin Timberlake |
| 8 | 9 | HEY BOYS AND GIRLS Evermore |
| 9 | 12 | I'M ON A BOAT The Lonely Island Feat. T-Pain |
| 10 | 17 | GHETTO FLOWER J. Williams |
| 11 | 8 | DON'T TRUST ME 3OH!3 |
| 12 | 7 | DEAD AND GONE T.I. Feat. Justin Timberlake |
| 13 | 15 | ALWAYS BE HERE Dane Rumble |
| 14 | 10 | KISS ME THRU THE PHONE Soulja Boy Feat. Sammie |
| 15 | 13 | I'M YOURS Jason Mraz |
| 16 | 14 | BEAUTIFUL Akon Feat. Colby O'Donis |
| 17 | 11 | WILD OUT (CHOOO HOOO) Savage Feat. Baby Bash |
| 18 | 19 | YOU FOUND ME The Fray |
| 19 | 18 | MY LIFE WOULD SUCK WITHOUT YOU Kelly Clarkson |
| 20 | 16 | EH EH (NOTHING ELSE I CAN SAY) Lady GaGa |

Albums

| TW | LW | TITLE Artist |
|----|----|--|
| 1 | - | PASSIONE Paul Potts |
| 2 | 3 | FEARLESS Taylor Swift |
| 3 | 16 | THE BOAT THAT ROCKED Soundtrack |
| 4 | 1 | ONLY BY THE NIGHT: TOUR EDITION Kings Of Leon |
| 5 | 2 | QUIET NIGHTS Diana Krall |
| 6 | 6 | NOW YOU'RE GONE Basshunter |
| 7 | 4 | LIVE IN LONDON Leonard Cohen |
| 8 | 9 | THE FAME Lady GaGa |
| 9 | 5 | THE COLLECTION Annie Lennox |
| 10 | 7 | I AM... SASHA FIERCE Beyonce |
| 11 | 10 | THE WEEKEND Smashproof |
| 12 | 11 | PAPER TRAIL T.I. |
| 13 | 14 | R.O.O.T.S. Flo Rida |
| 14 | - | TWILIGHT: DELUXE EDITION Soundtrack |
| 15 | 8 | NO LINE ON THE HORIZON U2 |
| 16 | - | SONGS FOR MY MOTHER Ronan Keating |
| 17 | 17 | WE DANCE. WE SING. WE STEAL THINGS. Jason Mraz |
| 18 | 12 | ROCKFERRY: DELUXE EDITION Duffy |
| 19 | 20 | ALL I EVER WANTED Kelly Clarkson |
| 20 | 13 | LOVE SONGS UB40 |

(Courtesy of RIANZ®)

Australian Artist Overseas Chart Performance - Week Commencing 27th April 2009

Singles

| Artist | Title | Dist. | Country | TW | LW | Date |
|----------------|-------------|-------|---------|----|------|------------|
| URBAN, KEITH | Kiss A Girl | WAR | Canada | 51 | (45) | 27.04.2009 |
| VERONICAS, THE | Untouched | WAR | Canada | 39 | (31) | 27.04.2009 |

Albums

| Artists | Title | Dist. | Country | TW | LW | Date |
|--------------|-----------------|-------|---------|----|------|------------|
| AC/DC | Black Ice | SME | Europe | 17 | (24) | 27.04.2009 |
| | | | Canada | 37 | (28) | 27.04.2009 |
| | | | UK | 37 | (28) | 27.04.2009 |
| URBAN, KEITH | Defying Gravity | EMI | USA | 12 | (7) | 27.04.2009 |
| | | | Canada | 12 | (9) | 27.04.2009 |

New Releases Singles - Week Commencing 27th April 2009

| | | | |
|------------------------------|--|--------------|-----------------|
| BASSINGTHWAIGHTE, NATALIE | 1000 STARS | CD - Singles | SBM 88697520512 |
| CLARKSON, KELLY | I DO NOT HOOK UP | CD - Singles | SBM 88697524502 |
| | I DO NOT HOOK UP · I DO NOT HOOK UP (INSTRUMENTAL VERSION) · MY LIFE WOULD SUCK WITHOUT YOU (CHRIS ORTEGA RADIO MIX) · MY LIFE WOULD SUCK WITHOUT YOU (F&L RADIO EDIT) | | |
| DEATH CAB FOR CUTIE | THE OPEN DOOR EP | CD - Singles | WAR 7567896761 |
| | LITTLE BRIBES · A DIAMOND AND A TETHER · MY MIRROR SPEAKS · I WAS ONCE A LOYAL LOVER · TALKING BIRD (DEMO) | | |
| GALVATRONS, THE | CASSANDRA | CD - Singles | WAR 5186540632 |
| | CASSANDRA (RADIO EDIT) · SANTA CRUZ · DONNIE'S ON TV (2009 VERSION) | | |
| SHINEDOWN | SECOND CHANCE | CD - Singles | WAR 7567896534 |
| | SECOND CHANCE (ALBUM VERSION) · CALL ME (WARNER GERMANY ACOUSTIC SESSION) · SECOND CHANCE (VIDEO) | | |
| SUNDANCE KIDS, THE | SOLUTIONS | CD - Singles | WAR 5186540272 |
| | SOLUTIONS · COINCIDENCE | | |

ARIA New Releases Albums - Week Commencing 27th April 2009

| | | | |
|--------------------------------|--|--------------|-----------------|
| AKRON/FAMILY | SET 'EM WILD, SET 'EM FREE | Compact Disc | EMI URA288 |
| | EVERYONE IS GUILTY · RIVER · CREATURES · ALPS AND THEIR ORANGE EVERGREEN, THE · SET 'EM FREE · GRAVELLY MOUNTAINS OF THE MOON · MANY GHOSTS · MBF · THEY WILL APPEAR · SUN WILL SHINE (WARMTH OF THE SUNSHIP VERSION) · LAST YEAR | | |
| ARENA, TINA | DON'T ASK / IN DEEP | Compact Disc | SBM 88697522232 |
| BLUE ROSE | BLUE ROSES | Compact Disc | INE XLCD411 |
| | GREATEST THOUGHTS · COVER YOUR TRACKS · I AM LEAVING · CAN'T SLEEP · I WISH I... · COAST · DOES ANYONE LOVE ME NOW? · DOUBTFUL COMFORTS · REBECCA · IMAGINARY FLIGHT | | |
| BOOM CRASH OPERA | DANCING IN THE STORM | Compact Disc | UMA BLUE1642 |
| GEYER, RENEE | RENEESANCE | Compact Disc | UMA BLUE1652 |
| GOLDEN SILVERS | TRUE ROMANCE | Compact Disc | INE XLCD419 |
| | | Vinyl | INE XLLP419 |
| | ANOTHER UNIVERSE · TRUE ROMANCE · MAGIC TOUCH · SEED, THE · HERE COMES THE KING · SHAKES · QUEEN OF THE 21ST CENTURY · PLEASE VENUS · ARROWS OF EROS · FADE TO BLACK | | |
| HARPER, BEN AND RELENTLESS7 | WHITE LIES FOR DARK TIMES | Compact Disc | EMI 6992742 |
| | | Compact Disc | EMI 6992812 |
| | NUMBER WITH NO NAME · UP TO YOU NOW · SHIMMER AND SHINE · LAY THERE & HATE ME · WHY MUST YOU ALWAYS DRESS IN BLACK · SKIN THIN · FLY ONE TIME · KEEP IT TOGETHER (SO I CAN FALL APART) · BOOTS LIKE THESE · WORD SUICIDE, THE · FAITHFULLY REMAIN | | |
| HERE WE GO MAGIC | HERE WE GO MAGIC | Compact Disc | EMI URA295 |
| | ONLY PIECES · FANGELA · AHAB · TUNNELVISION · GHOST LIST · I JUST WANT TO SEE YOU UNDERWATER · BABYOHBABYJUSTCANTSTANDITANYMORE · NAT'S ALIEN · EVERYTHING'S BIG | | |
| HOPKINS, JON | INSIDES | Compact Disc | EMI 6974922 |
| | WIDER SUN, THE · VESSEL · INSIDES · WIRE · COLOUR EYE · LIGHT THROUGH THE VEINS · LOW PLACES, THE · SMALL MEMORY · A DRIFTING UP · AUTUMN HILL | | |
| ISIS | WAVERING RADIANT | Compact Disc | SHK IPC113 |
| KRAVITZ, LENNY | LET LOVE RULE | Compact Disc | EMI 6980132 |
| | SITTIN' ON TOP OF THE WORLD · FLOWER CHILD (LIVE) · BLUES FOR SISTER SOMEONE (LIVE) · LET LOVE RULE (2009 DIGITAL REMASTER) · MR. CAB DRIVER (LIVE) · FREEDOM TRAIN · MY PRECIOUS LOVE · FREEDOM TRAIN (LIVE) · I BUILD THIS GARDEN FOR US · BE (LIVE) · FEAR · MY PRECIOUS LOVE (LIVE) · DOES ANYBODY OUT THERE EVEN CARE (LIVE) · DOES ANYBODY OUT THERE EVEN CARE · MR CAB DRIVER · LET LOVE RULE (LIVE IN BOSTON) · ROSEMARY (2009 DIGITAL REMASTER) · ROSEMARY (LIVE) · BE · FEAR (LIVE) · MY FLASH ON YOU (LIVE IN AMSTERDAM) (2009 DIGITAL REMASTER) · BLUES FOR SISTER SOMEONE · EMPTY HANDS · IF 6 WERE 9 (LIVE IN AMSTERDAM) (2009 DIGITAL REMASTER) · FLOWER CHILD · LET LOVE RULE (BASIC ROUGH MIX) · COLD TURKEY (LIVE) (2009 DIGITAL REMASTER) · LIGHT SKIN GIRL FROM LONDON · FEAR (1987 DEMO) · MR. CAB DRIVER (DEMO) · LET LOVE RULE (DEMO) | | |

| | | | |
|---|--|------------------------------|------------------------------------|
| LANDRETH, SONNY | LEVEE TOWN RIVER, THE | Compact Disc | SHK CTX472CD |
| MADINA LAKE | ATTICS TO EDEN NEVER TAKE US ALIVE · LET'S GET OUTTA HERE (ALBUM VERSION) · LEGENDS (ALBUM VERSION) · CRIMINALS (ALBUM VERSION) · THROUGH THE PAIN (ALBUM VERSION) · NEVER WALK ALONE (ALBUM VERSION) · NOT FOR THIS WORLD (ALBUM VERSION) · WELCOME TO OBLIVION (ALBUM VERSION) · SILENT VOICES KILL (ALBUM VERSION) · STATISTICS (ALBUM VERSION) · FRIENDS & LOVERS (ALBUM VERSION) · LILA, THE DIVINE GAME (ALBUM VERSION) | Compact Disc | WAR RR79312 |
| MAYER, JOHN | ROOM FOR SQUARES / HEAVIER THINGS / CONTINUUM | Compact Disc | SBM 88697494592 |
| MENTAL AS ANYTHING | CATS & DOGS TOO MANY TIMES · WALKING ON RAILS · IF YOU LEAVE ME CAN I COME TOO? · BERSERK WARRIORS · LET'S COOK · GOT HIT · READY FOR YOU NOW · LOOKING FOR BIRD · CHEMICAL TRAVEL · CATALINA'S REWARD · PSYCHEDELIC PEACE LAMP · SAD POETRY · HARAREI I AKARANA | Compact Disc | WAR D19562 |
| | ESSENTIAL AS ANYTHING YOU'RE SO STRONG · NIPS ARE GETTING BIGGER, THE · (JUST LIKE) ROMEO AND JULIET · EGYPT (REMASTERED) · IF YOU LEAVE ME CAN I COME TOO? (VIDEO) · COME AROUND (REMASTERED) · TOO MANY TIMES · (JUST LIKE) ROMEO & JULIET · IF YOU LEAVE ME CAN I COME TOO? (REMASTERED) · NIPS ARE GETTING BIGGER, THE · CLOSE AGAIN · TOO MANY TIMES · LIVE IT UP (VIDEO) · BERSERK WARRIORS (REMASTERED) · WORKING FOR THE MAN · LET'S COOK · I DIDN'T MEAN TO BE MEAN · I DIDN'T MEAN TO BE MEAN · HOLIDAY IN AUCKLAND · CLOSE AGAIN (2009 REMASTERED VERSION) · EGYPT · SPIRIT GOT LOST · BRAIN, BRAIN · BERSERK WARRIORS · WORKING FOR THE MAN · SPIRIT GOT LOST · APOCALYPSO · READY FOR YOU NOW · YOU'RE SO STRONG · LET'S COOK · LIVE IT UP · GOT HIT · DATE WITH DESTINY (REMASTERED) · WOULDN'T TRY TO EXPLAIN · CONCRETE AND CLAY (2009 REMASTERED VERSION) · BRAIN, BRAIN · LET'S GO TO PARADISE · APOCALYPSO · HE'S JUST NO GOOD FOR YOU (REMASTERED) · COME AROUND · ROCK & ROLL MUSIC · DATE WITH DESTINY · BIG WHEEL · WORLD SEEMS DIFFICULT, THE · MR NATURAL (REMASTERED) · HOLD ON · NIGEL (REMASTERED) · LET'S GO TO PARADISE · HE'S JUST NO GOOD FOR YOU · DON'T TELL ME NOW · LOVE ME TENDER · ROCK & ROLL MUSIC (VIDEO) · WORLD SEEMS DIFFICULT, THE · BABY YOU'RE WILD · OVERWHELMED · MR NATURAL · NIGEL · WHOLE WIDE WORLD · CALLING COLIN · JUST MY LUCK · NIPS ARE GETTING BIGGER (LIVE), THE | Compact Disc | WAR 5186539165 |
| | GET WET NIPS ARE GETTING BIGGER, THE · SPANISH GARDENER · BUSINESS AND PLEASURE · SHEILAH · POSSIBLE THEME FOR A FUTURE TV DRAMA SERIES · TALK TO BABY JESUS · EGYPT · ANOTHER MANS (SITTING IN MY KITCHEN) · CAN I COME HOME? · FRINGE BENEFITS · INSURANCE MAN · EMPTY HEARTS/OPEN WOUNDS · LOVE IS NOT A GIFT · WOLF AT YOUR DOOR | Compact Disc | WAR D19560 |
| MORRISSEY | SOUTHPAW GRAMMAR | Compact Disc | SBM 88697332522 |
| | | Compact Disc | SBM 88697472562 |
| | BOY RACER, THE · DO YOUR BEST AND DON'T WORRY (REMASTERED VERSION) · READER MEETS AUTHOR · HONEY, YOU KNOW WHERE TO FIND ME · DAGENHAM DAVE (REMASTERED VERSION) · SOUTHPAW (REMASTERED VERSION) · BEST FRIEND ON THE PAYROLL (REMASTERED VERSION) · FANTASTIC BIRD · OPERATION, THE · TEACHERS ARE AFRAID OF THE PUPILS, THE · YOU SHOULD HAVE BEEN NICE TO ME · NOBODY LOVES ME | | |
| MUM SMOKES | EASY / HOUSE MUSIC WRAP UP · NON COMMERCIAL LIFESTYLE ACTIVITIES · AT THE GATE · 1949 · MESSY ROOM · CATHY · SWEETHEART · ONE WITH SEVENTEEN · CURTAIN SMILE · NOT ONE OF THE BOYS · WHAT YOU KNOW · SOME FISH · THEM DAYS · REPRISE · CHEESE ON TOAST · EASY · CATHERINE · JAZZ TIGER · LEFT FOR DEAD · INVISIBLE SAND · DOUBLES · BICYCLE · NIGHT PEACE · GYPSY JOKER · HEALTH AND GIRLS · OUT MY WINDOW · HOUSE MUSIC · BRISBANE · MELTDOWN CREATION · KING'S PILLOW · STRUGGLETOWN | Compact Disc | INE SRP060 |
| MURRAY, PETE NOLL, SHANNON | FEELER / SEE THE SUN LIFT / THAT'S WHAT I'M TALKING ABOUT | Compact Disc Compact Disc | SBM 88697522072 SBM 88697522222 |
| OBERST, CONOR AND THE MYSTIC VALLEY BAND | OUTER SOUTH SLOWLY (OH SO SLOWLY) · TO ALL THE LIGHTS IN THE WINDOWS · BIG BLACK NOTHING · AIR MATTRESS · CABBAGE TOWN · TEN WOMEN · DIFFERENCE IS TIME · NIKORETTE · WHITE SHOES · BLOODLINE · SPOILED · WORLDWIDE · ROOSEVELT ROOM · EAGLE ON A POLE · I GOT THE REASON · SNAKE HILL | Compact Disc | EMI URA296 |
| PONYTAIL | ICE CREAM SPIRITUAL | Vinyl Compact Disc | INE WRF005LP INE PF088 |
| | BEG WAVES · G SHOCK · 7 SOULS · CELEBRATE THE BODY ELECTRIC (IT CAME FROM AN ANGEL) · LATE FOR SCHOOL · SKY DROOL · SMALL WEVS · DIE ALLMAN BRUDER · CELEBRATE THE BODY ELECTRIC (IT CAME FROM AN ANGEL) ACOUSTIC VERSION · SKY DROOL – ACOUSTIC VERSION | | |
| RIEU, ANDRE ROGUE TRADERS | THE BEST OF ANDRE RIEU BETTER IN THE DARK / HERE COME THE DRUMS | Compact Disc Compact Disc | SBM 88697522432 SBM 88697522062 |
| SCRIPT, THE | THE SCRIPT WE CRY (EXPLICIT) · BEFORE THE WORST · TALK YOU DOWN · MAN WHO CAN'T BE MOVED, THE · BREAKEVEN · RUSTY HALO · END WHERE I BEGIN, THE · FALL FOR ANYTHING · IF YOU SEE KAY · I'M YOURS · BREAKEVEN (AUDIO BED) · WE CRY (VIDEO) · MAN WHO CAN'T BE MOVED (VIDEO), THE · BREAKEVEN (VIDEO) · TALK YOU DOWN (VIDEO) | Compact Disc | SBM 88697523182 |
| SEBASTIAN, GUY | BEAUTIFUL LIFE / JUST AS I AM CLOSER TO THE SUN / MEMPHIS ALBUM | Compact Disc Compact Disc | SBM 88697522122 SBM 88697522112 |
| SOMETHING FOR KATE | DESERT LIGHTS / THE | Compact Disc | SBM 88697522252 |

© 1990 - 2009 Australian Recording Industry Association Ltd.

Strictly no reproduction, communication or other exploitation of the ARIA Report or its contents without written approval by ARIA.
To request permission to reprint, publish or otherwise utilise the ARIA Report or any ARIA Chart(s), please contact ARIA on (02) 8569 1144

| | | | |
|-----------------------|--|-----------------------|--------------------------|
| | OFFICIAL FICTION | | |
| SOUNDTRACK | SPECTACULAR! | Compact Disc | SBM 88697301082 |
| | DON'T TELL ME · BREAK MY HEART (ALBUM VERSION) · DANCE WITH ME (ALBUM VERSION) · LONELY LOVE SONG (ALBUM VERSION) · YOUR OWN WAY (ALBUM VERSION) · FOR THE FIRST TIME (ALBUM VERSION) · JUST FREAK (ALBUM VERSION) · ON THE WINGS OF A DREAM (ALBUM VERSION) · SOMETHING TO BELIEVE IN (ALBUM VERSION) · EVERYTHING CAN CHANGE · EYE OF THE TIGER (ALBUM VERSION) · THINGS WE DO FOR LOVE (ALBUM VERSION) | | |
| THUNDERHEIST | THUNDERHEIST | Compact Disc Vinyl | INE BDCD136 INE BD136 |
| | SWEET 16 · NOTHING2STEP2 · JERK IT · LBG (LITTLE BOOTY GIRL) · BUBBLEGUM · SLOW ROLL · SPACE COWBOY · PARTY AFTER, THE · FREDDIE · DO THE RIGHT THING · RED WHINE · CRUISE LOW · ANTHEM | | |
| TIGA | CIAO! | Compact Disc | UMA PIASL031CD |
| VARIOUS | BOUNCE! VOL. 2 | Compact Disc | UMA LNGA0002 |
| | MEMORIES ARE MADE OF THIS (2009) | Compact Disc | EMI 6977762 |
| | NEON ESSENTIAL VOLUME ONE - MIXED BY TV ROCK & CHARDY | Compact Disc | WAR 5186536512 |
| | INTRO [UNKNOWN] · GET UP (ORIGINAL MIX) [BINGO PLAYERS] · KNOBBERS [CROOKERS] · BUMP TO DIS (MUZZAIK REMIX) [RON CARROLL] · GHOSTS 'N STUFF [DEADMAU5] · ELEPHANT & CASTLE (CHRISTIAN LUKE & CHARDY REMIX) [CARL KENNEDY] · WORLD AS YOU KNOW IT (DENZAL PARK EDIT), THE [TODD WATSON] · ILLIN N FILLIN IT (MALENTI REMIX) [ARMAND VAN HELDEN] · GOT YOU DANCING (JACK BEATS REMIX) [LADY SOVEREIGN] · GOOD TIMES (DJ DLG MIX) [WHEELS & DISCO] · BANG THAT BOX (LAIDBACK LUKE REMIX) [ROGER SANCHEZ] · BREAKWATER (EDX'S IBIZA SUNRISE REMIX) [FUNKAGENDA] · RIVERSIDE [SIDNEY SAMSON] · JUST SHAKE [SIDNEY SAMSON] · UP (ORIGINAL MIX) [ALEX KENJI] · FEEL IT IN THE AIR (TV ROCK RE-SHAPE) [TV ROCK] · DOOV [BEN COLIN] · DON'T WAN'CHA (TV ROCK EDIT) [ZOE BADWIJ] · BODY TYPE 1 [CORRIE] · SET IT OFF - IAN CAREY REMIX [DENNIS CHRISTOPHER] · WHATEVER KIND (ORIGINAL MIX) [MIC NEWMAN] · DANCIN' (AVICII REMIX) [SEB BENETT] · CHOP (ORIGINAL MIX) [BINGO PLAYERS] · NOW YOU'RE GONE (CLUB MIX) [JUAN KIDD] · LIMIT OF YOUR MIND (TOCADISCO'S BEACH CLUB MIX) [TOMMIE SUNSHINE] · TIMES LIKE THESE (EDX'S INDIAN SUMMER REMIX) [ALBIN MYERS] · PEOPLE, THE [SEBASTIEN LEGER] · HOLDING THE MOTH (AUDIOJACK REMIX) [UNDERWORLD] · DEEP FEAR (ANDREA ROMA MIX) [SIDEKICK] · HEY BOYS AND GIRLS (TV ROCK EDIT) [EVERMORE] · TIME SLIP (LOST IN SPACE) (ORIGINAL MIX) [DBN] · ALAMO (TV ROCK REMIX) [DIRTY SOUTH] · WE ARE THE PEOPLE (SAM LA MORE REMIX) [EMPIRE OF THE SUN] · LOVE WILL SET YOU FREE (TV ROCK & LUKE CHABLE REMIX) [SUNLOVERZ] · MIAMI TO ATLANTA [PRYDA] | | |
| | THE BEST OF COUNTRY & IRISH LOVE SONGS | Compact Disc | SBM 88697466422 |
| WELCH, BRENDAN | THE GLEANER | Compact Disc | INE FR6678 |
| | I THINK I ALWAYS THOUGHT · MADE IT TO SAIL · HALLS OF MEN · OH NO (I'M WASTING AWAY) · I DON'T KNOW HER YET · IF ONLY I COULD KNOW YOU THEN · BROKEN UP TIMELINE · TIME ENOUGH FOR ANYTHING · STEADY HAND · ATOM FIRE · ON THE RUN · LAST REVELUTION, THE | | |
| X AND HELL | MILLION DOLLAR SEX PARTY | Compact Disc | UMA ILL013CD |
| | MILLION DOLLAR SEX PARTY · DON'T STOP MOVIN · JUMP THE GUN(SEND ME AN ANGEL) · SHADES OFF · MY FKN HAT · MONSTER · UPSIDE · FARAWAY · GOOD GIRL · MAYBE IT'S ME · BROKEN ANGEL · ALWAYS WINNIN' | | |
| YOU AM I | #4 RECORD / HI FI WAY | Compact Disc | SBM 88697522042 |
| | SOUND AS EVER / HOURLY DAILY | Compact Disc | SBM 88697522052 |
| YOUNG DIVAS | NEW ATTITUDE / YOUNG DIVAS | Compact Disc | SBM 88697522182 |

ARIA New Releases DVDs - Week Commencing 27th April 2009

| | | | |
|-------------------------|--|--|----------------|
| DEEP PURPLE | SOUNDS OF PURPLE | | SHK DAVID1642 |
| LEWIS, JERRY LEE | JERRY LEE LEWIS AND FRIENDS | | SHK KAL1558 |
| | I AM WHAT I AM · I DON'T WANT TO BE LONELY TONIGHT · YOU WIN AGAIN · I'VE GOT A WOMAN · GOODNIGHT IRENE · WHAT I'D SAY · HIGH SCHOOL CONFIDENTIAL · ROCKIN' MY LIFE AWAY · JOHNNY B GOODE · WHOLE LOT OF SHAKIN' GOIN ON · GREAT BALLS OF FIRE · MEDLEY RECORDING · MEXICALI ROSE · WILD ONE | | |
| MAYALL, JOHN | THE GODAFTHER OF BRITISH BLUES / THE TURNING POINT | | SHK KAL1559 |
| SONGBIRDS | YOU'VE GOT A FRIEND: LIVE IN CONCERT | | EMI 6967399 |
| WILCO | ASHES OF AMERICAN FLAGS | | WAR 7559799381 |
| | ASHES OF AMERICAN FLAGS · A FADING TECHNOLOGY · SIDE WITH SEEDS · HANDSHAKE DRUGS · ROAD TO NOW, THE · LATE GREATS, THE · KINGPIN · BLAH BLAH BLAH [JEFF] · WISHFUL THINKING · BACKSTAGE · IMPOSSIBLE GERMANY · SAY AHHH · A CHANGING AMERICA · VIA CHICAGO · SHOT IN THE ARM · MONDAY · BAND CONVERSATION · YOU ARE MY FACE · HEAVY METAL DRUMMER · WAR ON WAR · CREDITS · I'M THE MAN WHO LOVES YOU · AIRLINE TO HEAVEN (EXTRA) · IT'S JUST THAT SIMPLE · AT LEAST THAT'S WHAT YOU SAID · I AM TRYING TO BREAK YOUR HEART · THEOLOGAINS (EXTRA) · HATE IT HERE (EXTRA) | | |



THE ARIA REPORT



The ARIA Report operates as a subscriber only newsletter and is only available to subscribers in the form of a weekly document which is emailed to all subscribers. All copyright material contained in the ARIA Report is owned by ARIA, and is intended for your general use and information purposes only. You may not download, store in cache, display, print or copy the material without the advance prior approval of ARIA. ARIA does not accept any responsibility for loss or damage suffered by any person or body relying directly or indirectly on any information contained within the ARIA Report. Any rights not expressly granted herein are reserved. Contact charts.mail@aria.com.au with questions or problems as appropriate.

© 1990 - 2009 Australian Recording Industry Association Ltd.

Strictly no reproduction, communication or other exploitation of the ARIA Report or its contents without written approval by ARIA. To request permission to reprint, publish or otherwise utilise the ARIA Report or any ARIA Chart(s), please contact ARIA on (02) 8569 1144