

# 212s-7 Pineapple Gilet



## Suggested yarn:

- Pierrot Yarns Sawayaka Cotton [100% cotton; 416 yds/380m per 3.53 oz./100g cone]; color #38 old rose, 3 cones [270g]

## Tools/Notions:

- 3.0mm (approx. US C or D) crochet hook or size necessary to achieve gauge

## Finished measurements:

- back width 39.5cm/15.55"
- length 58.5cm/23.03"

## Gauge (10cm/4" square):

- pattern stitch A: 33 sts and 14 rows
- pattern stitch B: 8 peaks and 15 rows
- pattern stitch C: 32 sts and 13 rows

*Gauge may vary according to individual crochet style. Change hook size if necessary to achieve gauge. Alternatively, rework pattern with your own gauge measurements.*

## Crochet Tips

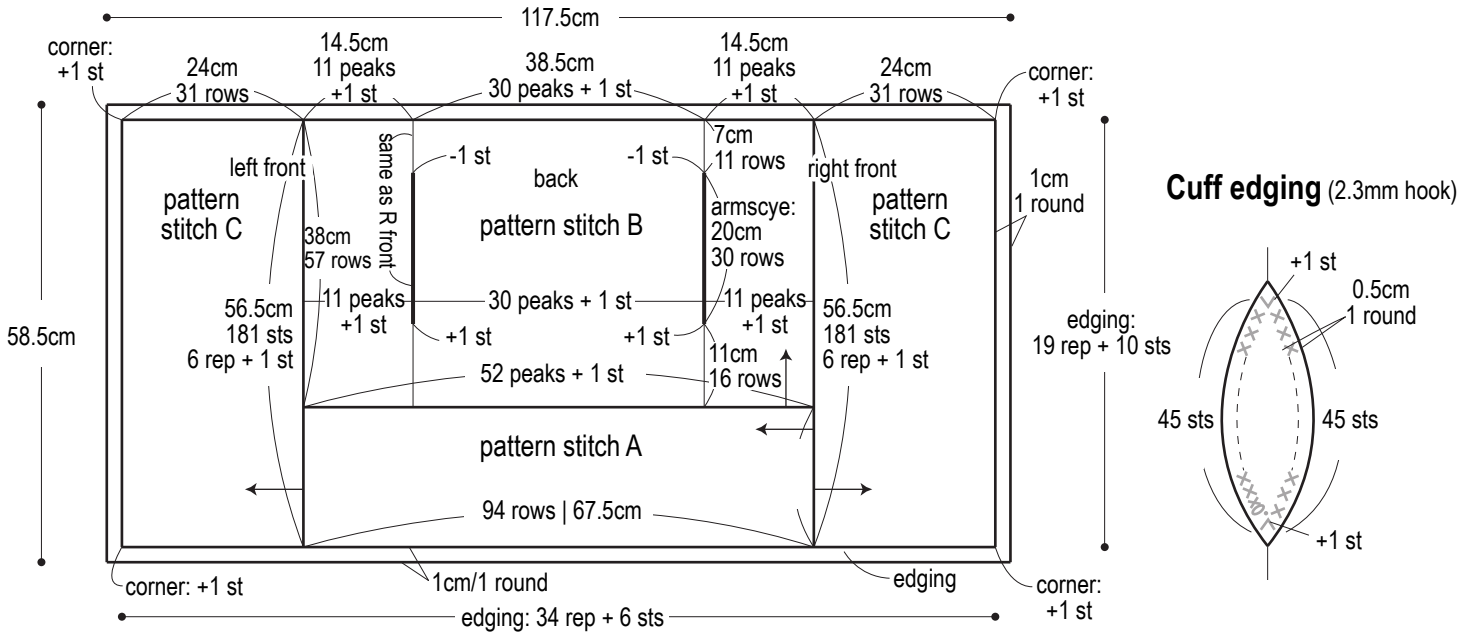
**Gilet:** Chain to begin, working first row into bottom loops of chain. Work in pattern stitch A. After finishing pattern stitch A section, begin working in pattern stitch B. Work armholes as follows: work in pattern stitch B through row 16. Then begin working left front, back, and right front separately, each for 30 rows. Join yarn at edge of left front and work 11 more rows across all three sections (left front, back, and right front). Joining yarn at start of pattern stitch A section, now work pattern stitch C across ends of pattern stitch A and B rows; work right front in pattern stitch C. Work left front in the same manner.

**Finishing:** Work 1 round of edging around entire outer perimeter of garment. Work 1 round of sc around each armhole.

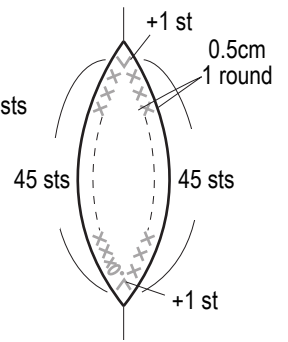
## Abbreviations:

- ch = chain
- rep = repeat(s)
- sc = single crochet (US)

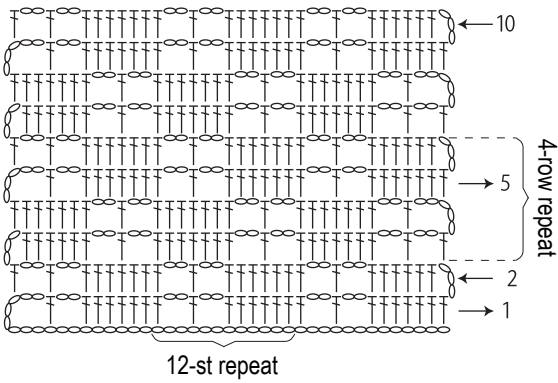
**Gilet instructions** (2.3mm hook)



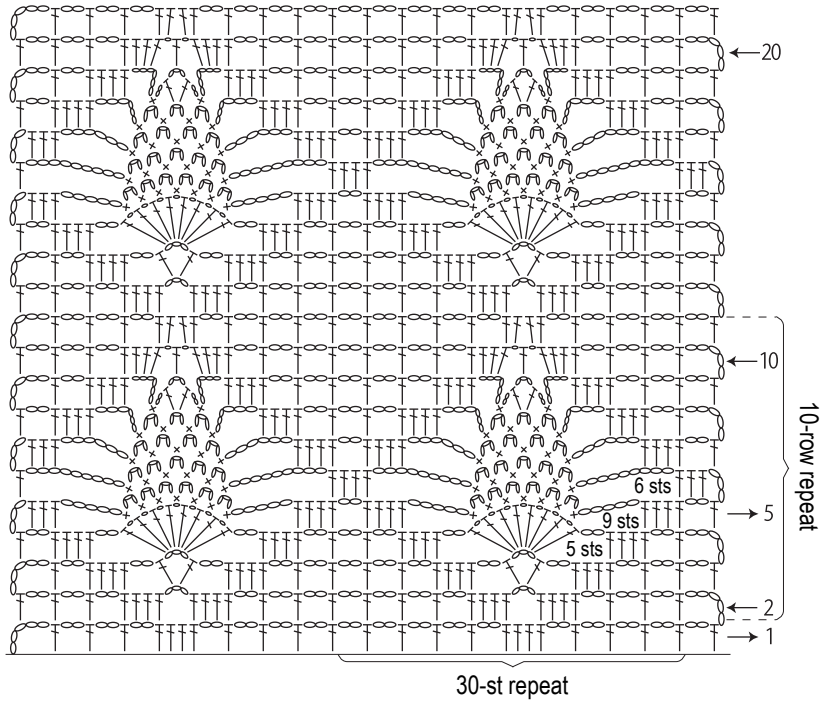
**Cuff edging** (2.3mm hook)



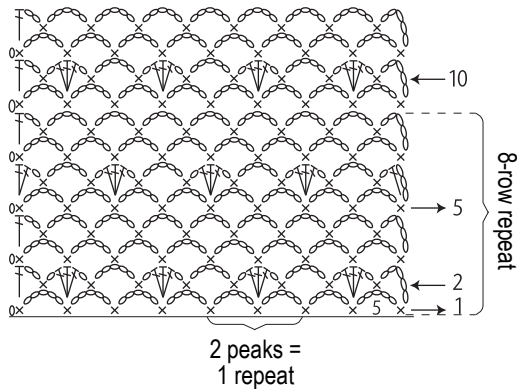
**Pattern stitch A** (2.3mm hook)



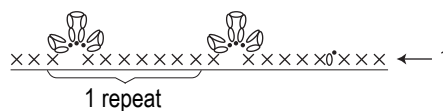
**Pattern stitch C** (2.3mm hook)



**Pattern stitch B** (2.3mm hook)

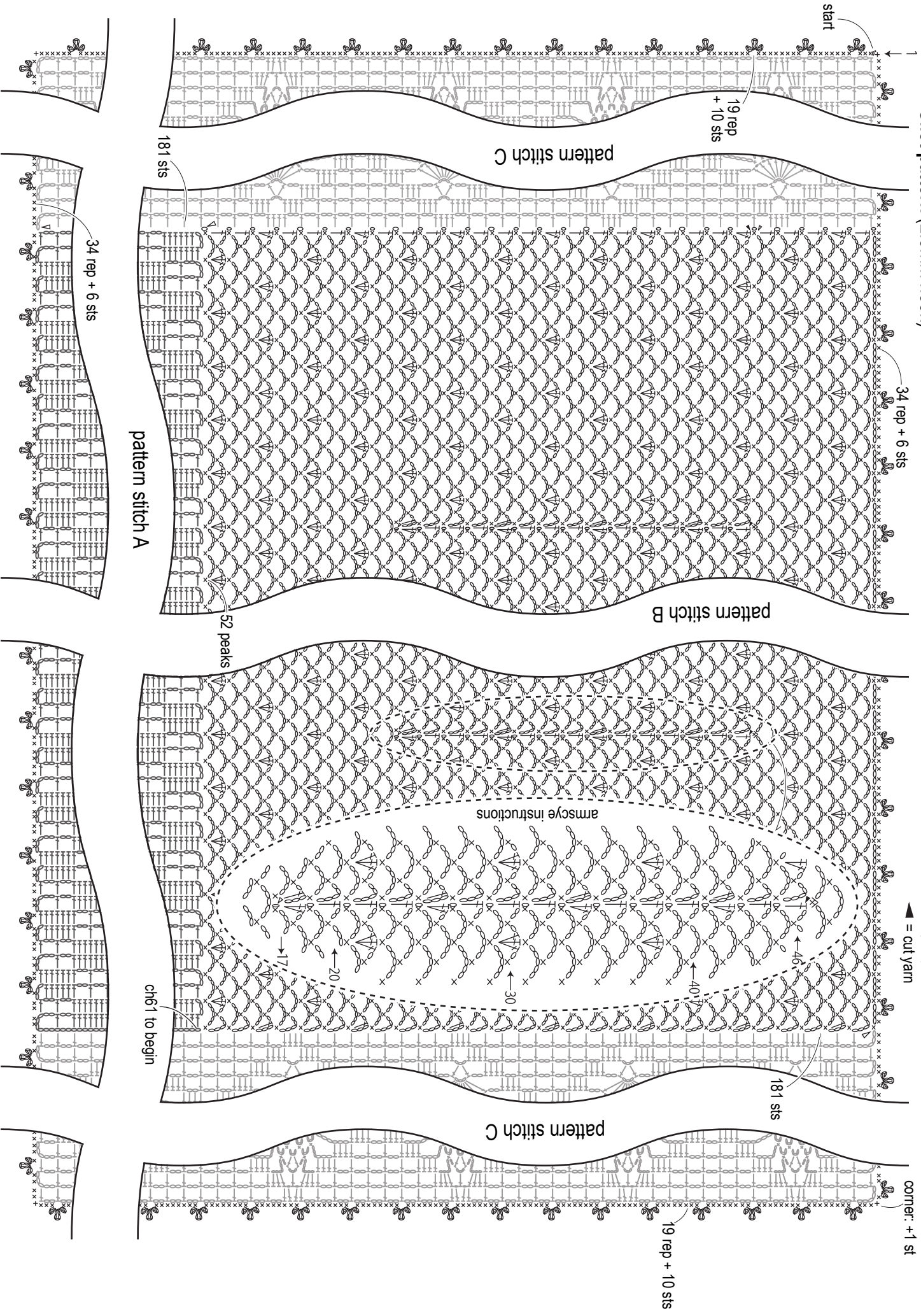


**Pattern stitch C** (2.3mm hook)



edging **Gilet pattern (2.3mm hook)**

▽ = join yarn  
 ▲ = cut yarn



corner: + 1 st

19 rep + 10 sts

181 sts

pattern stitch C

ch6 1 to begin

armscye instructions

52 peaks

pattern stitch B

pattern stitch A

181 sts

pattern stitch C

19 rep + 10 sts

start

34 rep + 6 sts

34 rep + 6 sts