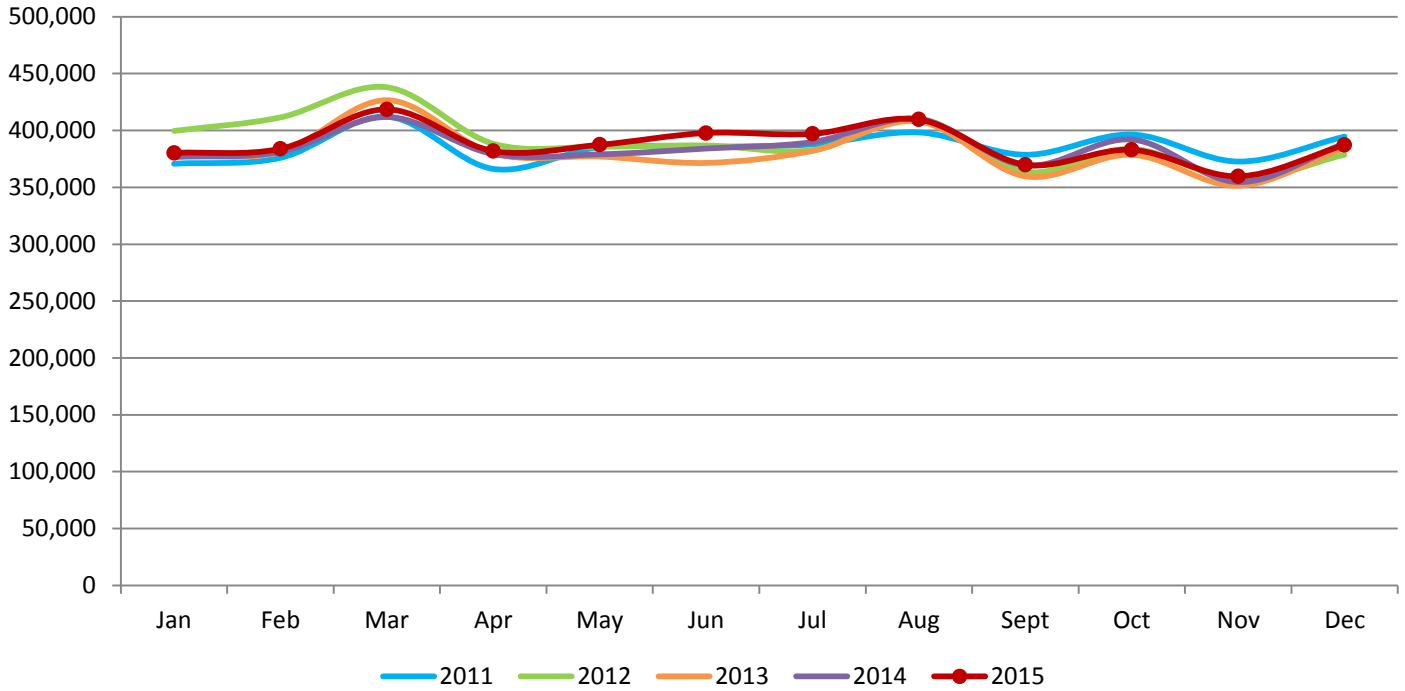


Ottawa Macdonald-Cartier International Airport Total Passenger Volume (2011-2015)



YOW PASSENGER STATISTICS (ENPLANED + DEPLANED) 2011-2015

	2011	2012	2013	2014	2015 YTD
Domestic	3,429,310	3,454,387	3,363,685	3,434,209	3,488,629
Transborder	750,486	775,040	772,678	741,285	735,755
International	444,830	456,529	442,228	440,954	431,976
Total	4,624,626	4,685,956	4,578,591	4,616,448	4,656,360

2011	January	February	March	April	May	June	July	August	September	October	November	December	2011
Domestic	239,642	247,010	267,850	255,785	302,978	309,225	307,099	316,417	299,536	312,831	289,502	281,435	3,429,310
Transborder	64,630	67,424	81,292	69,751	59,156	52,887	56,608	57,070	55,301	63,779	59,865	62,723	750,486
International	66,491	61,548	63,054	40,662	23,303	23,569	24,061	24,789	23,826	19,806	23,275	50,446	444,830
Total	370,763	375,982	412,196	366,198	385,437	385,681	387,768	398,276	378,663	396,416	372,642	394,604	4,624,626
2012	January	February	March	April	May	June	July	August	September	October	November	December	2012
Domestic	258,138	270,673	281,189	281,496	305,455	307,122	304,477	322,006	283,262	301,452	274,012	265,105	3,454,387
Transborder	67,834	70,568	86,974	71,445	57,180	56,286	55,220	64,665	57,170	63,086	59,240	65,372	775,040
International	73,607	70,254	69,828	35,367	23,145	23,412	23,027	23,769	23,205	19,273	23,423	48,219	456,529
Total	399,579	411,495	437,991	388,308	385,780	386,820	382,724	410,440	363,637	383,811	356,675	378,696	4,685,956
2013	January	February	March	April	May	June	July	August	September	October	November	December	2013
Domestic	244,393	243,683	271,539	267,962	293,942	293,418	300,261	318,398	284,612	302,183	269,474	273,820	3,363,685
Transborder	70,477	72,426	84,062	71,958	61,216	55,351	58,255	64,490	53,115	58,530	59,593	63,205	772,678
International	63,312	64,977	71,001	39,821	21,936	22,713	23,568	25,058	21,936	17,923	22,342	47,641	442,228
Total	378,182	381,086	426,602	379,741	377,094	371,482	382,084	407,946	359,663	378,636	351,409	384,666	4,578,591
2014	January	February	March	April	May	June	July	August	September	October	November	December	2014
Domestic	244,890	250,217	262,395	268,307	304,834	309,371	311,249	324,956	296,163	315,872	272,384	273,571	3,434,209
Transborder	63,478	65,994	78,520	68,022	54,150	52,046	55,211	60,631	52,138	60,459	59,605	71,031	741,285
International	68,244	65,005	70,936	42,997	20,046	22,697	23,349	24,420	20,955	15,709	22,650	43,946	440,954
Total	376,612	381,216	411,851	379,326	379,030	384,114	389,809	410,007	369,256	392,040	354,639	388,548	4,616,448
2015	January	February	March	April	May	June	July	August	September	October	November	December	2015 YTD
Domestic	242,999	246,218	270,890	268,839	307,385	324,978	320,865	329,703	298,779	309,718	284,816	283,439	3,488,629
Transborder	72,879	76,339	80,446	67,921	59,767	49,778	52,363	55,103	48,903	55,545	54,621	62,090	735,755
International	64,454	61,323	67,219	45,155	20,279	23,022	23,790	24,800	22,242	17,694	20,297	41,701	431,976
Total	380,332	383,880	418,555	381,915	387,431	397,778	397,018	409,606	369,924	382,957	359,734	387,230	4,656,360

Information provided for the current year is preliminary and subject to change without notice.