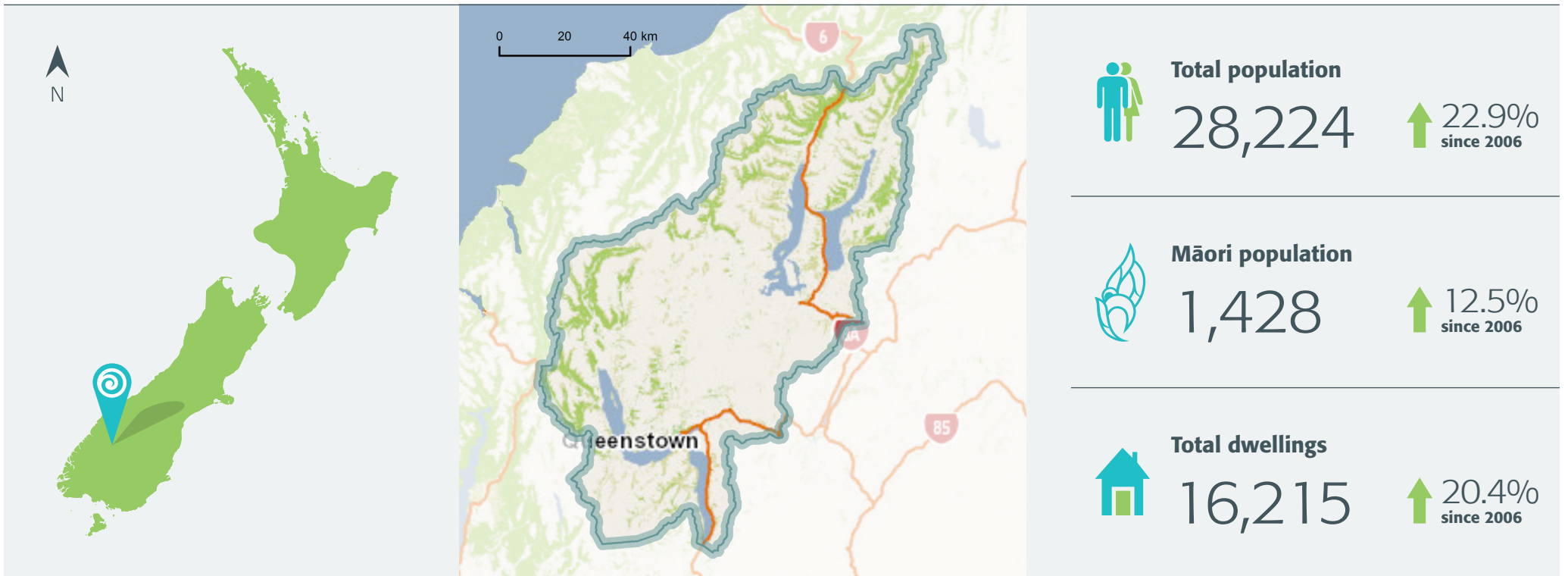
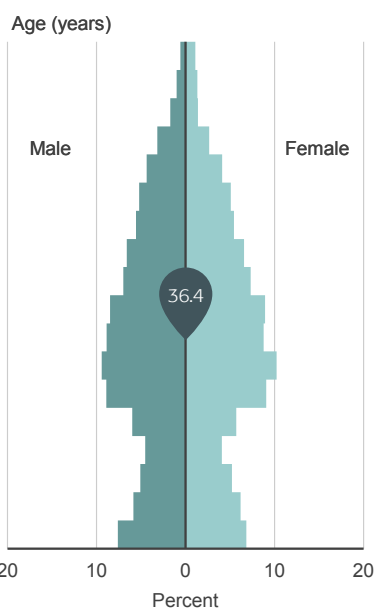


QuickStats about Queenstown-Lakes District

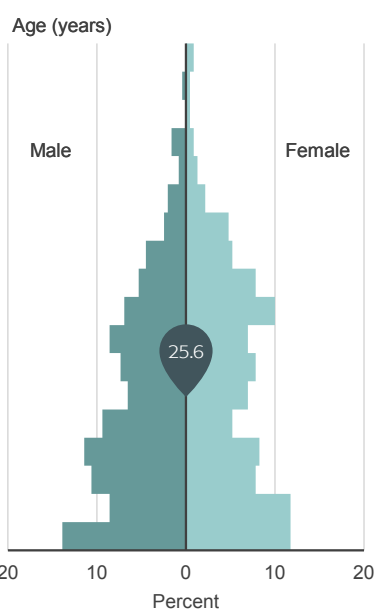
2013 CENSUS



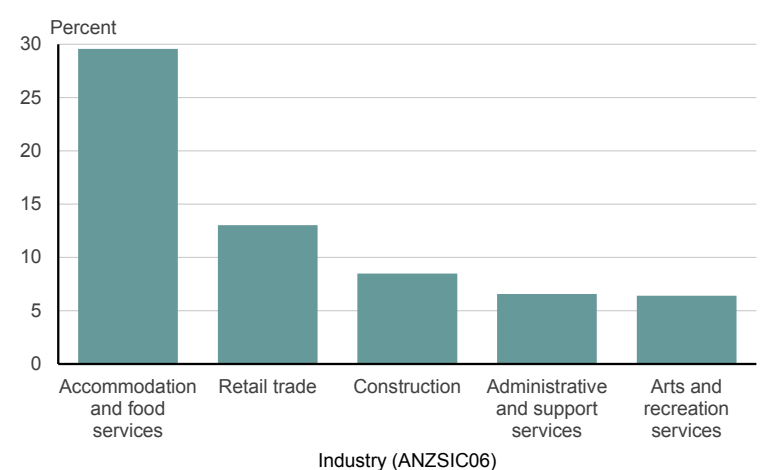
Age and sex of people
Queenstown-Lakes District
2013 Census



Age and sex of Māori
Queenstown-Lakes District
2013 Census



Top five industries in Queenstown-Lakes District
By employee count
For year ended February 2013



How Queenstown-Lakes District compares with the national average

Individuals

Major ethnic groups

European	87.5%	vs	74.0%
Māori	5.4%	vs	14.9%
Pacific peoples	0.8%	vs	7.4%
Asian	6.8%	vs	11.8%
Middle Eastern/Latin American/African	2.7%	vs	1.2%
Other	2.1%	vs	1.7%

Percent born overseas

32.3% vs 25.2%

Percent of people with a formal qualification*

89.3% vs 79.1%

Median income*

\$35,100 vs \$28,500

*For people aged 15 years and over.

Households

Percent of households that own their dwelling*

59.6% vs 64.8%

Median weekly rent

\$350 vs \$280

Percent of households with internet access

87.6% vs 76.8%

*Or hold it in a family trust.