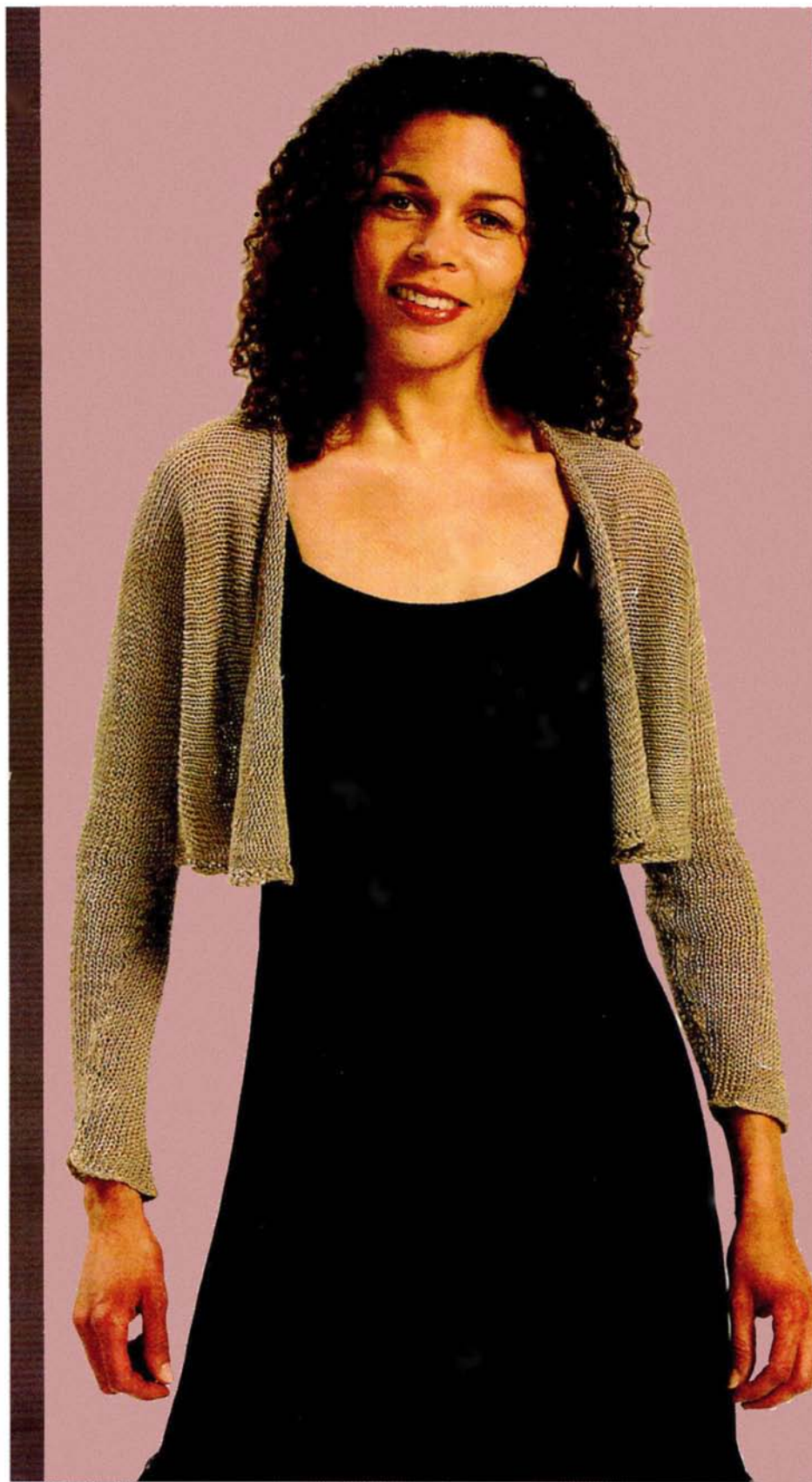


LINEN
SHRUG

*Design by
Ram
Wools*



Linen Shrug

MATERIALS: Euroflax Linen 100g x 3

NEEDLES: 4.5mm (US 7) needles and 5mm (US 8) needles, 4mm (US 6) 75-80 cm (29"-32") circular needle (or needle size to give correct tension).

TENSION: 17 sts and 23 rows = 4" on 5mm (US 8) needles in stocking stitch (st st).

Note: The appearance of the knit fabric is deliberately loose. Please check your tension carefully.

FINISHED MEASUREMENTS:

Width = 42", Length = 13.5"

Sleeve Length = 17"

Our quantities are based on sample garments completed by our knitters. Quantities may vary from knitter to knitter. PLEASE make sure to do a tension swatch for accurate gauge.

ABBREVIATIONS:

sl 1 = slip one st purlwise from left to right needle without working

yb = bring yarn between needles from front to back

yf = bring yarn between needles from back to front

GARMENT IS WORKED IN ONE PIECE FROM CUFF TO CUFF.

With 4.5mm (US 7) needles, cast on 36 sts. Work in st st for 4 rows. Change to 5mm (US 8) needles and work 4 more rows. Increase 1 st at each end of next and every following 8th row until 58 sts. Increase 1 st at each end of every right side row until 64 sts.

Cast on 26 sts at the beginning of next 2 rows for the body 116 sts. Work even until piece measures 6.5" from the cast on for body, ending on a wrong side row.

PLEASE READ THROUGH BEFORE CONTINUING:

Shaping is accomplished by using the "short

row" technique. Rows are only partially worked and piece is turned while there are still sts on the left hand needle. When the instructions call to "turn" the work, proceed as follows: On K rows, slip 1 purlwise, yf. Return slipped st to left hand needle, yb. Turn the work as if to begin a new row. There will be an extra loop of yarn or a "wrap" around the base of the slipped st.

When the pattern requires the slipped sts to be worked again, pick up the "wrap" along with the st and work together as one.

SHAPE RIGHT FRONT: Work the following sequence of short rows:

K51, yf, sl 1, yb, return sl 1, turn P to end, turn
K45, yf, sl 1, yb, return sl 1, turn, P to end, turn
K39, yf, sl 1, yb, return sl 1, turn, P to end, turn
K33, yf, sl 1, yb, return sl 1, turn, P to end, turn
K27, yf, sl 1, yb, return sl 1, turn, P to end, turn
K21, yf, sl 1, yb, return sl 1, turn, P to end, turn
K15, yf, sl 1, yb, return sl 1, turn, P to end, turn
K9, yf, sl 1, yb, return sl 1, turn, P to end

NEXT ROW: K 58 sts picking up the yarn wraps and knitting them together with each slipped sts. Place the remaining 58 sts on a holder. Work the 58 sts on the needles for 17 rows in st st to form right front opening extension, ending on a wrong side row. Cast off 58 sts knitwise to form right front opening. Return to 58 sts on holder and work in st st for 7.5" from cast off ending on a wrong side row to form neck edge. Place these 58 sts on a holder. Cast on 58 sts for left front opening. Work in st st for 17 rows to form left front edge extension, ending on a wrong side row. Proceed as follows

SHAPE LEFT FRONT: Work the following sequence of short rows:

K9, yf, sl 1, yb, return sl 1, P to end, turn
K15, yf, sl 1, yb, return sl 1, P to end, turn
K21, yf, sl 1, yb, return sl 1, P to end, turn
K27, yf, sl 1, yb, return sl 1, P to end, turn
K33, yf, sl 1, yb, return sl 1, P to end, turn
K39, yf, sl 1, yb, return sl 1, P to end, turn
K45, yf, sl 1, yb, return sl 1, P to end, turn
K51, yf, sl 1, yb, return sl 1, P to end, turn

K all 58 sts, picking up the yarn wraps and knitting them together with each slipped st. K across the 58 sts from the holder. Place a marker at the end of this row. Work all 116 sts in st st until the piece measures 6.5" from the marker ending on a wrong side row. Cast off 26 sts from

beg of next 2 rows. Work the remaining 64 sts for left sleeve in st st as follows: Decrease 1 st at each end of every right side row to 58 sts. Work 7 rows. Decrease 1 st at each end of next and every following 8th row to 36 sts. Work 4 more rows. Change to 4.5mm (US 7) needles, work 4 rows. Cast off knitwise.

FINISHING: Sew side and sleeve seams. With 4mm (US 6)

circular needle, beginning at the bottom of the lower right front opening and with right side facing, pick up and K approx 130 sts evenly along lower edge (pick up 2 sts for every 3 rows). K 1 row. Cast off knitwise, loosely. With 4mm (US 6) needles, and right side facing, pick up and K 38 sts evenly along back neck edge. Work in st st for 17 rows. Sew edges of back neck extension to edges of front neck extension.

