



Sumitomo Dainippon  
Pharma

# Sumitomo Dainippon Pharma Corporate Profile

1<sup>0</sup>  
th  
Anniversary

Sumitomo Dainippon Pharma Co., Ltd., operates every day to achieve its corporate mission “to broadly contribute to society through value creation based on innovative research and development activities for the betterment of healthcare and fuller lives of people worldwide”. By pouring all our efforts into the research and development of new drugs, we aim to provide innovative and effective pharmaceutical solutions to people not only in Japan but also around the world in order to realize our corporate mission.

With our acquisition of Sepracor Inc. (current Sunovion Pharmaceuticals Inc.) in 2009, we have established our own sales and marketing infrastructure in the U.S. The globalization of our operations has progressed significantly by the 2011 launch of Latuda<sup>®</sup>, a key product in our global business strategy. We were also successful in gaining a strong foothold in the oncology area through the 2012 acquisition of Boston Biomedical Inc., a U.S. biotechnology venture company.

In our Third Mid-term Business Plan that began in 2013, our corporate vision is two-fold: “Aspire to be a globally active R&D-based company” and “Contribute to medical care through leading-edge technologies.” For the realization of this vision, we are redoubling efforts to promote innovations. In addition to the focused research and development areas of Psychiatry & Neurology and Oncology, we are channeling our R&D energies also into two new fields: diseases for which no approved drugs exist as well as Regenerative Medicine / Cell Therapy. The year 2015 marks the halfway of the mid-term business plan as well as the tenth anniversary of the birth of Sumitomo Dainippon Pharma. We reaffirm our commitment to taking the company to a new dimension.

Constantly aware of our responsibility to you and all our stakeholders from patients, their families and medical caregivers to our shareholders, employees and the communities where we work, we pledge our unflagging efforts to earn and maintain your trust in us. On behalf of all us at Sumitomo Dainippon Pharma, I would like to ask for your continued support and encouragement.



**Masayo Tada**  
Representative Director,  
President and CEO

## Corporate Mission

To broadly contribute to society through value creation based on innovative research and development activities for the betterment of healthcare and fuller lives of people worldwide

## Management Mission

- To contribute to healthcare and people's well-being based upon the principles of patient-oriented management and innovative research
- To continuously strive to maximize corporate value through constant business development and to fulfill shareholder expectations
- To create an environment in which employees can fulfill their potential and increase their creativity
- To maintain the trust of society and to contribute to the realization of a better global environment

## Declaration of Conduct

At Sumitomo Dainippon Pharma, directors and employees alike are determined to pursue corporate activities following the Declaration of Conduct shown below, not to mention abiding by laws and regulations, so that we will win greater trust of society and become an innovative company.

### 1. Follow through the global slogan "Innovation today, healthier tomorrows."

We will constantly pursue self-innovation to deliver innovative products and services with speed so that people around the world can lead healthier and more fulfilling lives.

### 2. Pursue trustworthy corporate activities

We will comply with laws and regulations, and conduct transparent and fair corporate activities with a strong commitment to ethical behavior. Also, we will reject all contacts with organizations involved in illegal activities or which deviate from accepted standards of responsible social behavior.

### 3. Positively disclose information and properly manage information

We will ensure adequate, timely and fair information disclosure and properly protect and manage the personal and consumer information acquired in the course of our business activities.

### 4. Help employees reach their full potential

We will create a safe, encouraging work environment where employees are trusted to take the initiative and can demonstrate the full extent of their creativity.

### 5. Respect human rights

We will respect the rights of all people associated with our company in conducting corporate activities.

### 6. Positively address global environmental issues

We will take proactive, independent action on global environmental issues, recognizing this as a vital part of our corporate mission. We will also offer environmentally friendly products and services.

### 7. Build harmonious relationships with society

As a good corporate citizen, we will engage in philanthropic activities and other activities of social benefit. We will also respect local cultures and customs both in and outside of Japan, and contribute to local community development through our corporate activities.



## Brand Mark



“Green Prism”, the symbol of Sumitomo Dainippon Pharma Co., Ltd., is a motif in the design of the “Sun” — expressing a lively sense of energy, moving on toward tomorrow; “Light” — to convey the potential and hope of the future; and “Flower” — engendering the joyous and liberated sensation of basking in good health. A design crafted to embody preeminent research and development powers, a thorough support system, the spirit of challenge, and the other stances of Sumitomo Dainippon Pharma — a company bent on supplying all people with the strength to push on toward an even brighter tomorrow. Emanating from the symbol, furthermore, is the image of a network, steadily spreading out into the world. The corporate color of Green plays on the hue of fresh young leaves and other images of healthy and energetic moods, and signs of what the future holds.

## Global Slogan

### Innovation today, healthier tomorrows

Befitting Sumitomo Dainippon Pharma's tenth anniversary of the merger, “Innovation today, healthier tomorrows” is the global slogan adopted by four pharmaceutical companies of Sumitomo Dainippon Pharma group (Sumitomo Dainippon Pharma, Sunovion Pharmaceuticals, Boston Biomedical, and Sumitomo Pharmaceuticals (Suzhou)).

The global slogan reflects our full commitment to deliver to society revolutionary pharmaceuticals, acquired through groundbreaking ideas and high-standard research and development by each individual employee's challenge for innovation, so as to help enable the patients and their families lead healthier and fulfilling lives.

## Corporate Profile

<b>Name</b>	Sumitomo Dainippon Pharma Co., Ltd.
<b>Establishment</b>	May 14, 1897
<b>Date of merger</b>	October 1, 2005
<b>Representative</b>	Masayo Tada (President and Chief Executive Officer)
<b>Capitalization</b>	22.4 billion yen (as of September 30, 2015)
<b>Employees</b>	6,791 (consolidated), 4,062 (non-consolidated) (as of December 31, 2015)
<b>Business</b>	Manufacturing and sales of Pharmaceuticals, food ingredients, food additives, veterinary medicines, diagnostics and others
<b>Osaka Head office</b>	6-8, Doshomachi 2-chome, Chuo-ku, Osaka, Osaka, Japan (Zip code 541-0045) Main number: +81-6-6203-5321
<b>Tokyo Head office</b>	13-1, Kyobashi 1-chome, Chuo-ku, Tokyo, Japan (Zip code 104-8356) Main number: +81-3-5159-2500
<b>Fiscal year</b>	April 1 to March 31

In October 2005, Sumitomo Dainippon Pharma Co., Ltd. was formed through the merger of Dainippon Pharmaceutical Co., Ltd. and Sumitomo Pharmaceuticals Co., Ltd.

Sumitomo Dainippon Pharma aims to actualize its vision of becoming “an innovative pharmaceutical company with a strong market presence.”

We are aiming for the enhancement of the domestic revenue base, promotion of the development of overseas business, enhancement of development pipelines and development as well as making aggressive investments for future growth.

## October 1, 2005 Sumitomo Dainippon Pharma created.

**2006** ● AmBisome® (therapeutic agent for systemic fungal infection) launched.

**2007** ● REPLAGAL® (therapeutic agent for Anderson-Fabry disease) launched.  
● The laboratory products business was transferred to DS Pharma Biomedical Co., Ltd.  
● The mid-term business plan (for the period from fiscal 2007 to fiscal 2009) started.  
● The New Solid Dosage Form Facility (Suzuka Plant) established.

**2008** ● LONASEN® (atypical antipsychotic) launched.  
● AVAPRO® (therapeutic agent for hypertension) launched.  
● Acquired Kyowa Hakko Kirin's entire equity in Kyowa Hakko Pharmaceuticals (Suzhou) Co., Ltd.

**2009** ● TRERIEF® (therapeutic agent for Parkinson's disease drug) launched.  
● A holding company (Dainippon Sumitomo Pharma America Holdings, Inc.) established in the United States.  
● Acquired Sepracor Inc. (Current Sunovion Pharmaceuticals Inc.), Sepracor (Current Sunovion Pharmaceuticals Inc.) became a wholly-owned subsidiary of U.S. holding company.

**2010** ● MIRIPLA® (therapeutic agent for hepatocellular carcinoma) launched.  
● The 2nd mid-term business plan (for the period from fiscal 2010 to fiscal 2014) started.  
● Sepracor Inc. (Current Sunovion Pharmaceuticals Inc.) and Dainippon Sumitomo Pharma America, Inc. merged in the United States.  
● METGLUCO® (biguanide oral hypoglycemic) launched.  
● The Human Growth Hormone business transferred.  
● The Animal Health Products business split off and DS Pharma Animal Health Co., Ltd. established.  
● The Food & Speciality Products business integrated into its subsidiary Gokyo Trading Co., Ltd. and corporate name changed to DSP Gokyo Food & Chemical Co., Ltd.  
● Sepracor Inc. changed its company name to Sunovion Pharmaceuticals Inc.

**2011** ● LATUDA® (atypical antipsychotic) launched in the United States by Sunovion Pharmaceuticals Inc.  
● SUREPOST® (rapid-acting insulin secretagogue) launched.

**2012** ● Acquired Boston Biomedical Inc.  
● ZETONNA® (therapeutic agent for allergic rhinitis) launched in the U.S. by Sunovion Pharmaceuticals Inc.  
● Sunovion Pharmaceuticals Inc. acquired Elevation Pharmaceuticals Inc. (Current SRD)  
● AIMIX® (therapeutic agent for hypertension) launched.

**2013** ● A Subsidiary (Sunovion Pharmaceuticals Asia Pacific Pte Ltd.) established in Singapore.  
● The 3rd mid-term business plan (for the period from fiscal 2013 to fiscal 2017) started.  
● Dainippon Sumitomo Pharma Europe Ltd. changed its company name to Sunovion Pharmaceuticals Europe Ltd.  
● The New Chemistry Research Building (the Osaka Research Center) established.  
● Osaka / Tokyo twin head office structure started.  
● Joint venture company (Create Vaccine Company, Ltd.) established.  
● An anti-cancer drugs sales subsidiary company (Boston Biomedical Pharma, Inc.) established in the U.S.

- Joint venture company (Sighregen K.K.) established.
- Kobe Regenerative & Cellular Medicine Center opened.
- APTIOM® (antiepileptic) launched in the U.S. by Sunovion Pharmaceuticals Inc.
- LATUDA® (atypical antipsychotic) launched in the U.K. by Sunovion Pharmaceuticals Europe Ltd.
- Announced reorganization of product sites (Integation of productive functions of Ibaraki Plant and Suzuka Plant, Closure of Ehime Plant)

- Started promotion for the indication “pruritus in chronic liver disease patients” of REMITCH®
- Trulicity® (GLP-1 receptor agonist) launched.

### Dainippon Pharmaceutical Co., Ltd.

Dainippon Pharmaceutical Co., Ltd., established on May 14, 1897. Twenty-one prominent leaders in the pharmaceutical industry in Doshomachi, Osaka, founded Osaka Pharmaceuticals Co., Ltd.

In 1898, Pharmaceutical Plant (former, Osaka Plant and former, Osaka Center) established in Ebie, Osaka. The company acquired the semigovernmental Dainippon Pharmaceutical Company in Tokyo and changed the name of the company to Dainippon Pharmaceutical Co., Ltd.

### Sumitomo Pharmaceuticals Co., Ltd.

Sumitomo Pharmaceuticals Co., Ltd., established on February 6, 1984, from the Research, Development, and Manufacturing divisions of Sumitomo Chemical Co., Ltd.'s pharmaceuticals business, as well as the Pharmaceuticals Sales division of Inabata & Co., Ltd., the sole distributor of Sumitomo Chemical Company's pharmaceuticals.

The new company opened for business on October 1.

## Corporate Governance

### Basic concept on corporate governance

Sumitomo Dainippon Pharma Co., Ltd. (the “Company”) commits itself to continuously pursuing the establishment of a corporate governance system which is highly effective, aiming for the fuller realization of our Corporate Mission and Management Mission.

#### Corporate Mission

To broadly contribute to society through value creation based on innovative research and development activities for the betterment of healthcare and fuller lives of people worldwide

#### Management Mission

- To contribute to healthcare and people’s well-being based upon the principles of patient-oriented management and innovative research
- To continuously strive to maximize corporate value through constant business development and to fulfill shareholder expectations
- To create an environment in which employees can fulfill their potential and increase their creativity
- To maintain the trust of society and to contribute to the realization of a better global environment

### Factors that could significantly influence corporate governance

Sumitomo Chemical Co., Ltd. is the parent company of Sumitomo Dainippon Pharma with a 50.22% share of voting rights. Respect for autonomy is affirmed by the parent company and management independence is maintained, with no restraints on approvals or other matters by the parent company concerning Sumitomo Dainippon Pharma’s business operations.

Furthermore, no directors of Sumitomo Chemical sit on the Sumitomo Dainippon Pharma Board of Directors. Sumitomo Dainippon Pharma retains some personnel seconded from the parent company based on Sumitomo Dainippon Pharma’s own judgment, and believes this has no influence on Sumitomo Dainippon Pharma’s management or business operations. Respect for autonomy is affirmed by the parent company and Sumitomo Dainippon Pharma’s independence is maintained. Based on the above, Sumitomo Dainippon Pharma believes that the interests of its retail shareholders are not impaired by its parent company.

### Management structure

Sumitomo Dainippon Pharma has adopted an executive officer system under the Board of Directors to separate management supervision from business execution. In addition, Sumitomo Dainippon Pharma has selected a company with Audit & Supervisory Board independent of the Board of Directors to audit the execution of duties by the directors.

The Board of Directors is composed of eight members, including two outside director, and convenes once a month as a rule to decide and report on important management matters. In fiscal 2014, it met 14 times.

The Audit & Supervisory Board is composed of five members, including three outside members. It convenes once a month as a rule to discuss and decide important audit-related matters, as well as to preview the agenda items for Board of Directors meetings. In fiscal 2014, it met 13 times.

The Management Committee, which is a consultative body to assist the Representative Director, President and CEO in his decision making, meets twice a month as a rule to deliberate on important management matters, guided by the basic policies set by the Board of Directors. In fiscal 2014, it met 21 times. Moreover, to ensure that top managers including the members of the Board of Directors and the Audit & Supervisory Board and Executive Officers are fully aware of the status of business execution and related important matters, Sumitomo Dainippon Pharma has instituted the Executive Committee, which convenes once a month as a rule. In fiscal 2014, it met 11 times.

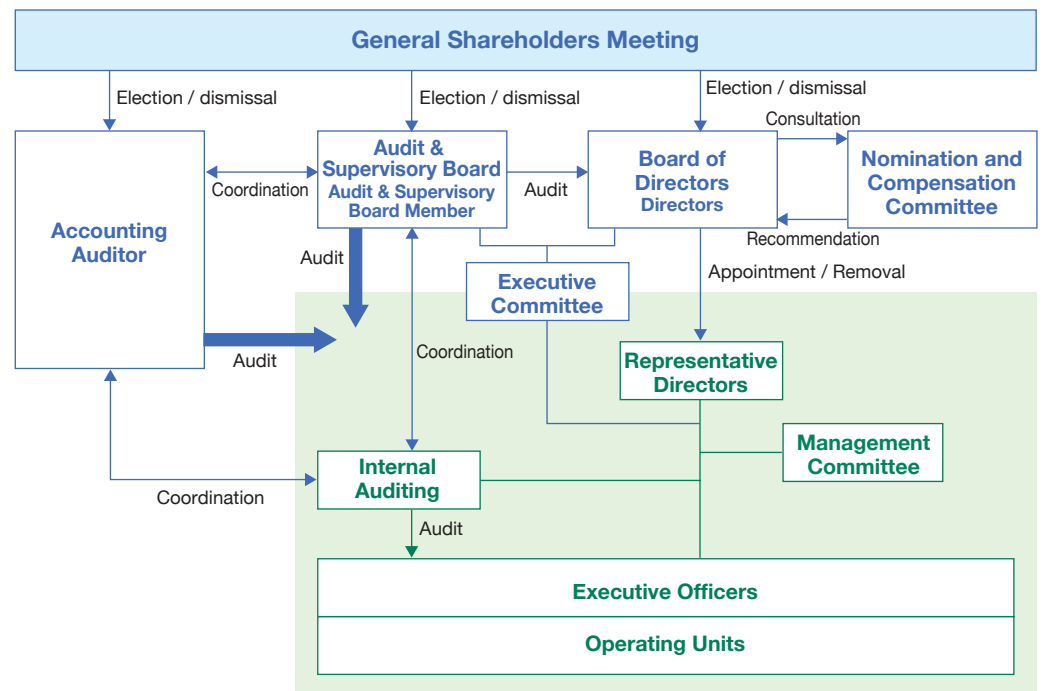
## Audit system

Sumitomo Dainippon Pharma has appointed five Audit & Supervisory Board members, three of whom are outside members. The Audit & Supervisory Board, composed of all the Audit & Supervisory Board members, determines audit policy, task allocation among members and other matters. In line with these matters, each member works to create an environment for greater audit effectiveness, including regular meetings with the representative directors, proactive reporting from and discussions with the other directors and employees, cooperation with the accounting auditor and the Internal Auditing Department, and furthermore, cooperation among all parties involved in auditing. In addition, members attend key business meetings including those of the Board of Directors to confirm the legality and appropriateness of management decisions by the directors and proactively audit the operational status of the internal control system through measures including receiving reports from directors and employees on the status of task execution, requesting explanation as necessary and viewing significant approval forms and other documents. The dedicated staff has been established for the Audit & Supervisory Board members to raise the effectiveness of their audits and to smoothly accomplish auditing tasks.

Accounting audits are handled by KPMG AZSA LLC, based on an audit agreement. Internal audits are carried out by the Internal Auditing Department, which reports directly to the President of Sumitomo Dainippon Pharma. The basic elements for achieving the objectives of internal control, including subsidiaries, are audited from a fair and independent standpoint.

## Development of an internal control system

The Board of Directors of Sumitomo Dainippon Pharma passed a resolution on the basic policies for the development of a system to ensure appropriate business operation. The status of implementation efforts pursuant to the basic policies for each year is reported based on the Companies Act at the Board of Directors meeting held in the last month of the fiscal year and the basic policies are revised as necessary to improve the system.





## Pharmaceuticals

The Sumitomo Dainippon Pharma Group sets the pharmaceuticals business, in order to deliver innovative and useful pharmaceuticals to people worldwide as well as in Japan we make every effort in applying advanced R&D to all of our new pharmaceuticals.

We advance the R&D for continuously creating new pharmaceuticals based on global development, and expand the pharmaceuticals business in Japan and worldwide.

## Japan

### Information provision activities

New drugs are delivered to patients after passing a long process that includes basic research, clinical studies and review by the government for regulatory approvals. Even after drug products are launched and used by a large number of patients, safety and efficacy are continually checked resulting in safe and secure, useful pharmaceuticals. It is only after proper usage has been established based on safety and efficacy information that the pharmaceuticals can fulfill their desired function of contributing effectively to human health requirements.

At Sumitomo Dainippon Pharma, we use our MR (Medical Representatives) to provide all of the requisite highly specialized information to personnel engaged in medical care. Our aim is to improve the confidence of medical personnel in Sumitomo Dainippon Pharma and to contribute via our daily MR activities to the betterment of healthcare and fuller lives of patients.

### Focus marketing areas and key products

We have positioned Cardiovascular / Diabetes, Psychiatry & Neurology, and Speciality areas as our focus marketing areas and we are progressing sales activities in Japan.

In the Cardiovascular and Diabetes area, our hypertension therapeutic products include an angiotensin II receptor blocker (ARB), calcium channel blocker (CCB), combination product of ARB and CCB, diuretic, angiotensin-converting enzyme (ACE) inhibitors and an alpha-beta blocker thus enabling us to participate effectively in the treatment of hypertension. In the diabetes area, we also promote several products which have different mechanisms of action for type 2 diabetes in order to respond to a wide range of medical needs. In the Psychiatry & Neurology areas, we offer a number of therapeutic drugs covering a wide range of diseases from schizophrenia to Parkinson's disease, anxiety disorders and epilepsy. In addition, in our Speciality areas (areas with high unmet medical needs where high specialization is required), we respond to a wide range of medical needs through the promotion of a therapeutic agent for systemic fungal infection, an Anderson-Fabry disease drug and a therapeutic agent for hepatocellular carcinoma.

We aim to maximize earnings by concentrating sales resources on strategic products AIMIX®, AVAPRO®, LONASEN®, TRERIEF®, new products SUREPOST®, REMITCH®, Trulicity® and speciality products Ambisome®, REPLAGAL®, MIRIPLA®.

#### Strategic products

Product name	Therapeutic indication
<b>AIMIX®</b>	Therapeutic agent for hypertension
<b>AVAPRO®</b>	Therapeutic agent for hypertension
<b>LONASEN®</b>	Atypical antipsychotic
<b>TRERIEF®</b>	Therapeutic agent for Parkinson's disease

### New products

Product name	Release Date	Therapeutic indication
<b>SUREPOST®</b>	May 2011	Rapid-acting insulin secretagogue
<b>REMITCHI®</b>	May 2015*	Therapeutic agent for pruritus
<b>Trulicity®</b>	September 2015	GLP-1 receptor agonist

\* Marketed by Torii Pharmaceutical Co.,Ltd. Promoted for indication "pruritus in chronic liver disease patients" by Sumitomo Dainippon Pharma Co.,Ltd.

### Speciality Products

Product name	Therapeutic indication
<b>AmBisome®</b>	Therapeutic agent for systemic fungal infection
<b>REPLAGAL®</b>	Anderson-Fabry disease drug
<b>MIRIPLA®</b>	Therapeutic agent for hepatocellular carcinoma

### Major Focus products

Product name	Therapeutic indication
<b>METGLUCO®</b>	Biguanide oral hypoglycemic drug
<b>AMLODIN®</b>	Therapeutic agent for hypertension and angina pectoris
<b>GASMOTIN®</b>	Gastroprokinetic
<b>PRORENAL®</b>	Vasodilator
<b>MEROPEN®</b>	Carbapenem antibiotic

### Aiming for the continuous creation of new drugs

The Sumitomo Dainippon Pharma Group aims to produce innovative pharmaceutical products, designating the psychiatry and neurology area and the oncology area as focus therapeutic areas, which represent unmet medical needs. The Sumitomo Dainippon Pharma Group also introduces various active strategies, including its own in-house research, technology import, and joint research with venture companies and academia to prepare for business development in global pioneering fields and advanced technology fields.

In the initial research stage, the Company makes efforts to improve research efficiency by use of advanced technologies owned by itself, such as genomics, proteomics, and metabolomics, and to apply the leading-edge science, including iPS cells, for our future new products. The Company is now also promoting a joint research with the Center for iPS Cell Research and Application, Kyoto University (CiRA) aiming for development of treatment for rare intractable diseases. Furthermore, the Company actively participates in the Research Center Network for Realization of Regenerative Medicine, a project involving industry, government, and academia. In the latter research stage and the development stage, the Company optimizes the portfolio of the entire Sumitomo Dainippon Pharma group from a global point of view, focusing on the key therapeutic area and including other areas as well. In addition, the Company is actively implementing product life cycle management, including the development of formulations that aims to maximize product values.

### Full-scale participation in oncology

The Sumitomo Dainippon Pharma Group is enhancing its presence in Oncology with the aim of making it a future core business area in addition to Psychiatry & Neurology. In April 2012, Sumitomo Dainippon Pharma acquired U.S. biotechnology company Boston Biomedical, Inc., which specializes in the area of Oncology. With this acquisition, we made a full-scale start on our global expansion in Oncology. With the aim to create innovative new drugs, in September 2012 we established the Sumitomo Dainippon Pharma Cancer Institute in Japan (Location: Osaka Research Center) as an organization independent from the Drug Research Division under the direct control of the president. In February 2013 we set up a new base in Cambridge, Massachusetts, U.S. in order to expand the scale of research activities of Boston Biomedical, Inc. and establish a global cancer research and development system.

### Setting global development as a basic strategy

The Sumitomo Dainippon Pharma Group has R&D bases in the four regions of Japan, the U.S., China and the U.K. that engage in collaborative activities under the management of the Chief Scientific Officer (CSO). The Sumitomo Dainippon Pharma Group established the Global Business Strategy Committee (GBSC) in April 2012 to make efficient the R & D management function of CSO. GBSC works to optimize the Sumitomo Dainippon Pharma Group's overall portfolio with a global perspective by discussing issues including global business strategy, licensing proposals, and strategic prioritization and resource allocation for R&D, in addition, discusses the promotion of projects in early development stages and other issues with a global perspective. As for clinical development, the Sumitomo Dainippon Pharma Group will strengthen the global seamless management and promote development in a speedier and more efficient manner under the Head of Global Clinical Development.

### Pharmaceuticals production

Recognizing that pharmaceuticals play a vital role in maintaining human health, we are dedicated to assuring that all pharmaceutical products have their designed quality. Manufacturing and quality control of pharmaceuticals are required to be carried out strictly in accordance with Good Manufacturing Practice (GMP) standards in each country.

The pharmaceuticals manufactured by the Sumitomo Dainippon Pharma Group are exported around the world after obtaining approval from the regulatory authorities of importing nations, including the U.S. Food and Drug Administration (FDA), the European Medicines Agency (EMA), and Australia's Therapeutic Goods Administration (TGA). Therefore, operating standards in the Sumitomo Dainippon Pharma Group are consistent with the GMP standards of Europe and the United States. Furthermore, we have established a high level of facility design and a quality assurance system to meet strict quality standards at the global level, including audits by overseas partner companies and the guidelines of the International Conference on Harmonisation (ICH), which deliberates the harmonization of EU, U.S. and Japanese pharmaceutical regulations.

Global standards for quality assurance are expected to become increasingly rigorous. The Sumitomo Dainippon Pharma Group is therefore making proactive investments in manufacturing facilities — including a new solid dosage form facility and a restricted access barrier system (RABS) that increases the level of sterility assurance — to meet future standards. Our manufacturing, quality assurance and other related divisions will work in concert to continue to provide pharmaceuticals of the highest quality.

### Manufacturing bases

#### ■ Suzuka Plant

As a production site focusing on efficiency, Suzuka Plant maintains integrated pharmaceutical manufacturing facilities at which a full range of operations are conducted, from production of active pharmaceutical ingredients and finished products to packaging. The main products at Suzuka are LONASEN<sup>®</sup>, an atypical antipsychotic, PRORENAL<sup>®</sup>, a vasodilator, GASMOTIN<sup>®</sup>, a gastroprokinetic, and EBASTEL<sup>®</sup>, an antiallergic.

#### ■ Ibaraki Plant

Since Technology Research and Development Division's Formulation Technology Research Department is located in the Ibaraki Plant, from manufacturing technology research to manufacturing and quality control practice, as an R&D-driven pharmaceuticals plant able to flexibly accommodate new products and technologies, this plant produces drugs in a broad range of dosage forms, including solid dosages, powders, tablets, capsules, injections and ointments.

#### ■ Ehime Plant

Ehime Plant manufactures biopharmaceutical products, and boasts the industry's largest cell culture facilities in terms of the number and size of cell-culture vessels. Under strict quality control system, the plant produces crude intermediate solution of SUMIFERON<sup>®</sup>, a natural alpha interferon product and the anti-malignant tumor antibiotic CALSED<sup>®</sup>, a sterile freeze-dried formulation.

#### ■ Oita Plant

Oita Plant is our core facility for active pharmaceutical ingredients. Operating 24 hours a day, 365 days a year, the plant manufactures active ingredients for products such as LATUDA<sup>®</sup>, an atypical antipsychotic; AMLODIN<sup>®</sup>, a therapeutic agent for hypertension and angina pectoris; DOPS<sup>®</sup>, a noradrenaline-activating neural function ameliorant; and CALSED<sup>®</sup>. MEROPEN<sup>®</sup>, a carbapenem antibiotic, is manufactured from its active ingredient to the final product in an integrated way for use in Japan and overseas.

## USA

### Sunovion Pharmaceuticals Inc.

Sumitomo Dainippon Pharma acquired U.S. company, Sepracor Inc. (Current Sunovion Pharmaceuticals Inc.) in October 2009, and then merged it with our subsidiary Dainippon Sumitomo Pharma America Inc. in April 2010 and changed the company name to Sunovion Pharmaceuticals Inc. (Sunovion). Currently, Sunovion plays a major role in the North American business of the Sumitomo Dainippon Pharma Group.

Sunovion aims to maximize earnings from LATUDA® (launched in February 2011) in addition to optimizing the field force structure for existing products.

#### Corporate Profile

Sunovion is a pharmaceutical company that possesses all of the functions of such an enterprise including R&D, manufacturing and sale of ethical pharmaceuticals for the Psychiatry & Neurology and respiratory areas.

<b>Foundation</b>	January 1984
<b>Head office location</b>	Marlborough, Massachusetts, U.S.A.
<b>Recent achievements</b>	148.2 billion yen (FY 2014)

#### Product lineup

Major pharmaceutical products	Therapeutic indication
<b>LATUDA®</b>	Atypical antipsychotic
<b>APTiom®</b>	Antiepileptic
<b>BROVANA®</b>	Long-acting Beta-agonist
<b>LUNESTA®</b>	Sedative hypnotic
<b>XOPENEX®</b>	Short-acting Beta-agonist
<b>OMNARIS®</b>	Corticosteroid nasal spray
<b>ZETONNA®</b>	Corticosteroid nasal spray
<b>ALVESCO®</b>	Inhaled corticosteroid

## China

### Sumitomo Pharmaceuticals (Suzhou) Co., Ltd.

The Sumitomo Dainippon Pharma Group is positively deploying business in China by setting it as an important growing market. In this market, our subsidiary Sumitomo Pharmaceuticals (Suzhou) Co., Ltd. is in charge of operations, from the production to sale of four products locally including MEPem®. The plant at Sumitomo Pharmaceuticals (Suzhou) Co., Ltd. currently packages our products for sale in the local market. Fully integrated production, from formulation to packaging, is currently being prepared. By bringing new products in addition to existing products to the market, we are aiming for steady growth.

#### Corporate Profile

<b>Foundation</b>	December 2003
<b>Head office location</b>	Suzhou Industrial Park, Jiangsu Province, People's Republic of China
<b>Recent achievements</b>	17.1 billion yen (FY 2014)

### Product lineup

Major pharmaceutical products	Therapeutic indication
<b>MEPEM</b> <sup>®</sup> (sold in Japan as MEROPEM)	Carbapenem antibiotic
<b>ALMARL</b> <sup>®</sup>	Therapeutic agent for hypertension, angina pectoris and arrhythmia
<b>SEDIEL</b> <sup>®</sup>	Serotonin-agonist antianxiety drug
<b>GASMOTIN</b> <sup>®</sup>	Gastroprokine

## Other Products

### Food ingredients, food additives and chemicals product materials

The food ingredients, food additives and chemical product materials business is handled by Sumitomo Dainippon Pharma subsidiary DSP Gokyo Food & Chemical Co., Ltd.

In the food ingredients and food additives business, the company develops and sells ingredients and additives for use in manufacturing safe, high-quality foods. Products include polysaccharides, primarily GLYLOID (tamarind gum), the first product of its kind successfully produced on an industrial scale; seasonings such as soup bouillon; and sweeteners such as MIRASEE, an easy-to-use preparation based on neotame, a high-intensity sweetener.

The chemical product materials business encompasses such products as cosmetic materials, active pharmaceutical ingredients, electronic chemicals and coating materials.

Leveraging Sumitomo Dainippon Pharma's technologies and know-how from the pharmaceuticals business, and through cooperation with domestic and overseas suppliers, we are expanding these business units as a company that integrates research, development and sales operations to continually create the value that customers require.

### Animal health products

The animal health products business is conducted by Sumitomo Dainippon Pharma subsidiary DS Pharma Animal Health Co., Ltd., of which the major products are veterinary medicines for companion animals, primarily dogs and cats, as well as for farm animals such as cattle, swine, horses and cultured fish. The company produces and provides its own products to customers through development work, in close cooperation with the pharmaceuticals business.

In the companion animal market, its focus business segment, DS Pharma Animal Health sells various therapeutics, including VICTAS, an antibacterial preparation, APINAC, a treatment for chronic canine heart failure, PRONAMID, a canine gastroprokinetic agent for the improvement of gastrointestinal motility, and STEROP, the first anti-inflammatory steroid eye-drop approved for veterinary use in Japan. In addition to its veterinary medicines, the company provides a broad range of other products, including Prescription Diet, a line of canine and feline therapeutic nutritional formulas, and Science Diet, a pet food formulated for health maintenance, from Hill's Pet Nutrition, Inc.

In the livestock business, DS Pharma Animal Health sells URSO, a medicine for cattle and swine, and EQVALAN, a medicine for horses. In the fisheries business, the company sells vaccines, anesthetics and synthetic antibacterial drugs for fish and crustaceans, contributing to food security and safety. In addition to medicines, the company also deals in feed additives and mixed feed for maintaining the health of fish and improving productivity.

At DS Pharma Animal Health, several products for companion animals and livestock are currently under development, including medicines discovered by Sumitomo Dainippon Pharma.

### Diagnostic and research materials

Sumitomo Dainippon Pharma subsidiary DS Pharma Biomedical Co., Ltd. conducts the diagnostics and research materials business. In the diagnostics business, to help ensure accurate and timely treatment, the company develops and supplies point-of-care testing (POCT) products such as diagnostics for infectious diseases such as influenza and Streptococcus, and for acute myocardial infarctions. It also develops and supplies in-vitro diagnostics for bone and calcium metabolism and central nervous system disorders.

In addition, DS Pharma Biomedical develops and supplies research materials that facilitate research related to medical care. It is focusing on creating new value by providing cells and culture media that can be applied in regenerative therapy using ES cells and iPS cells.

The company aims to contribute to drug discovery research through companion diagnostic biomarker developments and a new early-stage drug discovery assay system that applies cell culture techniques.

# Board of Directors and Executive Officers



(as of January 1, 2016)

Post	Name
Representative Director, President and Chief Executive Officer	<b>Masayo Tada</b>
Representative Director, Senior Executive Vice President Executive Director, Drug Research; Global R&D Office; Global Oncology Office	<b>Hiroshi Noguchi</b>
Member, Board of Directors, Executive Vice President Sales & Marketing; Legal Affairs; Intellectual Property; International Business Management	<b>Makoto Hara</b>
Member, Board of Directors, Senior Executive Officer Executive Director, Manufacturing; Technology Research & Development	<b>Yoshihiro Okada</b>
Member, Board of Directors, Senior Executive Officer Corporate Communications; Personnel; General Affairs; Procurement; Corporate Service Center	<b>Masaru Ishidahara</b>
Member, Board of Directors, Senior Executive Officer Global Corporate Planning; Global Business Development; External Affairs; Corporate Secretariat & Industry Affairs; Finance & Accounting; Regenerative & Cellular Medicine Office; Drug Development	<b>Hiroshi Nomura</b>
Member, Board of Directors (Outside)	<b>Hidehiko Sato</b>
Member, Board of Directors (Outside)	<b>Hiroshi Sato</b>
Audit & Supervisory Board Member	<b>Nobuo Takeda</b>
Audit & Supervisory Board Member	<b>Yasuji Furutani</b>
Audit & Supervisory Board Member (Outside)	<b>Harumichi Uchida</b>
Audit & Supervisory Board Member (Outside)	<b>Yutaka Atomi</b>
Audit & Supervisory Board Member (Outside)	<b>Kazuto Nishikawa</b>
Senior Executive Officer, Executive Director, Sales & Marketing	<b>Susumu Nakajima</b>
Senior Executive Officer, Vice Chair, President, Sunovion Pharmaceuticals Inc.	<b>Nobuhiko Tamura</b>
Senior Executive Officer, Executive Director, Corporate Regulatory Compliance & Quality Assurance; Regulatory Affairs	<b>Yoshinori Oh-e</b>
Executive Officer, Executive Director, Technology Research & Development; Corporate IT Management	<b>Yoshiharu Ikeda</b>
Executive Officer, Executive Director, Drug Development	<b>Nobuyuki Hara</b>
Executive Officer, Director, Personnel; Career Development	<b>Hitoshi Odagiri</b>
Executive Officer, President, Boston Biomedical Pharma, Inc.; Head of Global Oncology Office	<b>Kazuo Koshiya</b>
Executive Officer, Executive Vice President, Sunovion Pharmaceuticals Inc.; Director, Global Business Development; Head of Global Business Development for Sumitomo Dainippon Pharma Group	<b>Hiroyuki Baba</b>
Executive Officer, Director, Regenerative & Cellular Medicine Office	<b>Toru Kimura</b>
Executive Officer, Director, Global Corporate Planning	<b>Hajime Kinuta</b>



## Board of Directors and Executive Officers



Executive Officer,  
Executive Vice President and Chief Medical Officer,  
Sunovion Pharmaceuticals Inc.; Head of Global Clinical Development for  
Sumitomo Dainippon Group

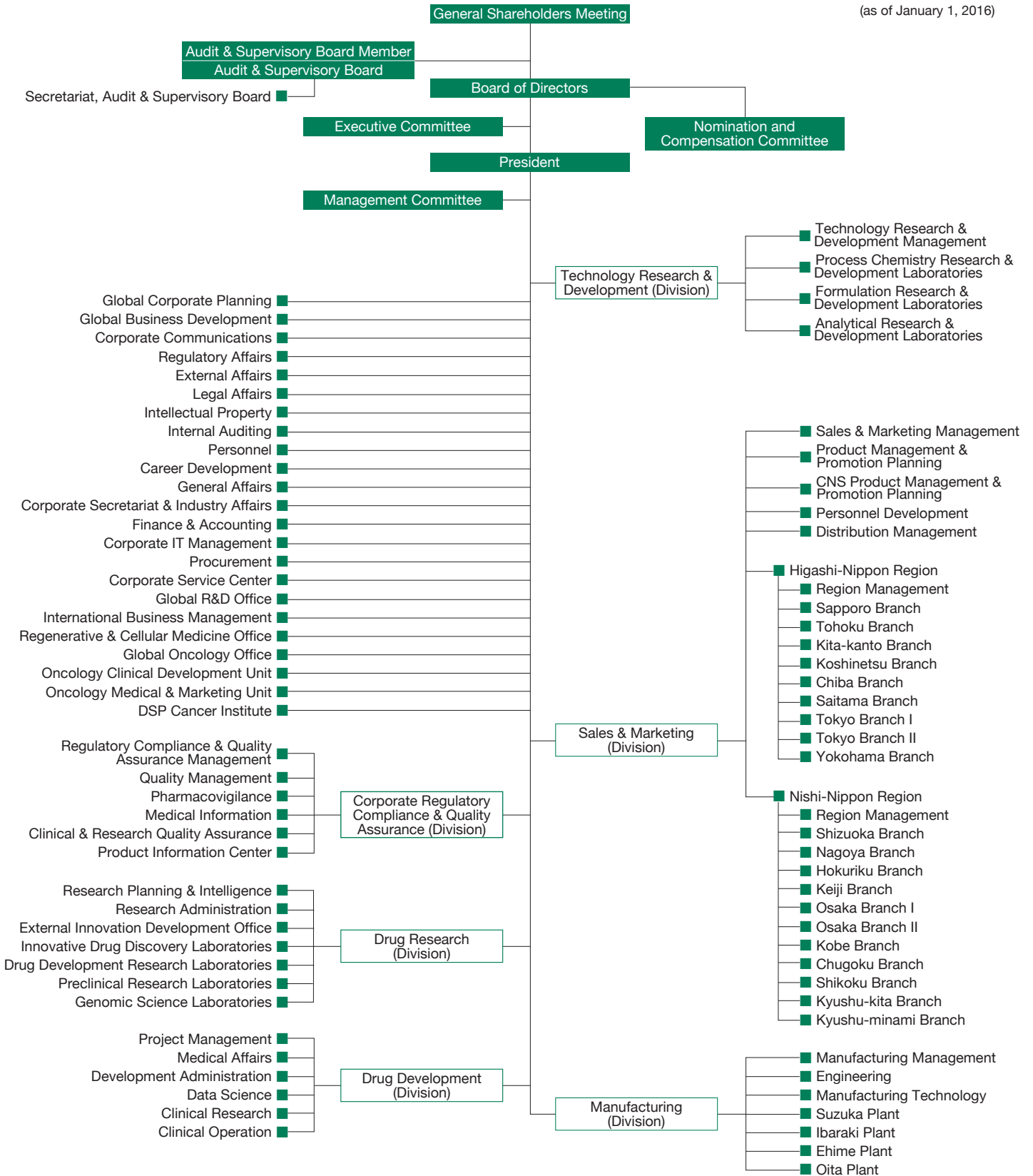
**Antony Loebel**

Executive Officer,  
President, Chief Executive Officer and Chief Medical Officer,  
Boston Biomedical, Inc.; Head of Global Oncology for  
Sumitomo Dainippon Pharma Group

**Chiang J. Li**

# Organizational Chart

(as of January 1, 2016)



## ■ Osaka Head Office

6-8, Doshomachi 2-chome, Chuo-ku, Osaka, Osaka, 541-0045, Japan  
TEL : +81-6-6203-5321  
FAX : +81-6-6202-6028

## ■ Tokyo Head Office

13-1, Kyobashi 1-chome, Chuo-ku, Tokyo, 104-8356, Japan  
TEL : +81-3-5159-2500  
FAX : +81-3-5159-2945

## ● Suzuka Plant

1450 Yasuzuka-cho, Suzuka, Mie, 513-0818, Japan  
TEL : +81-59-382-8951  
FAX : +81-59-382-4505

## ● Ibaraki Plant

3-45, Kurakakiuchi 1-chome, Ibaraki, Osaka, 567-0878, Japan  
TEL : +81-72-627-8112  
FAX : +81-72-627-8110

## ● Ehime Plant

5-1, Sobiraki-cho, Niihama, Ehime, 792-0001, Japan  
TEL : +81-897-37-7600  
FAX : +81-897-35-2534

## ● Oita Plant

2200 Oaza Tsurusaki, Oita, Oita, 870-0106, Japan  
TEL : +81-97-523-1177  
FAX : +81-97-523-1121

## ■ Central Research Laboratories

33-94, Enoki-cho, Suita, Osaka, 564-0053, Japan  
TEL : +81-6-6337-5876  
FAX : +81-6-6337-6538

## ■ Osaka Research Center

1-98, Kasugade-naka 3-chome, Konohana-ku, Osaka,  
Osaka, 554-0022, Japan  
TEL : +81-6-6466-5183  
FAX : +81-6-6466-5483

## ■ Kobe Regenerative & Cellular Medicine Center

Kobe KIMEC Center Building 5th Fl,  
5-2, Minatojimaminamimachi 1-chome, Chuo-ku, Kobe,  
Hyogo, 650-0047, Japan  
TEL : +81-078-306-2170  
FAX : +81-078-303-4040

## ● Tokyo Distribution Center

37-1, Kitatsuji, Kazo, Saitama, 347-0023, Japan  
TEL : +81-480-65-2240  
FAX : +81-480-65-2986

## ● Kobe Distribution Center

16-2, Yasakadai 3-chome, Suma-ku, Kobe, Hyogo, 654-0161, Japan  
TEL : +81-78-796-0150  
FAX : +81-78-796-0154

## Overseas Local Subsidiaries

### ● Dainippon Sumitomo Pharma America Holdings, Inc.

84 Waterford Drive Marlborough, MA 01752  
TEL : +1-508-481-6700  
FAX : +1-508-481-7683

### ● Sunovion Pharmaceuticals Inc.

84 Waterford Drive Marlborough, MA 01752  
TEL : +1-508-481-6700  
FAX : +1-508-481-7683

### ● Boston Biomedical, Inc.

640 Memorial Drive, Cambridge, MA 02139  
TEL : +1-617-674-6800  
FAX : +1-617-674-8661

### ● Boston Biomedical Pharma, Inc.

640 Memorial Drive, Cambridge, MA 02139  
TEL : +1-617-674-9300  
FAX : +1-617-674-9330

### ● Sunovion Pharmaceuticals Europe Ltd.

First Floor, Southside, 97-105 Victoria Street,  
London SW1E 6QT, U.K.  
TEL : +44- (0) 20-7821-2840  
FAX : +44- (0) 20-7821-2841

### ● Sumitomo Pharmaceuticals (Suzhou) Co., Ltd.

Suchun Industrial Estate 22#, No.428 Xinglong Street,  
SIP, Suzhou, 215126 China  
TEL : +86-512-6283-7896  
FAX : +86-512-6265-2606

### ● Sunovion Pharmaceuticals Asia Pacific Pte. Ltd.

150 Beach Road, #14-03 Gateway West, Singapore 189720

- |   |                       |
|---|-----------------------|
| ■ | Osaka Head Office     |
| ■ | Tokyo Head Office     |
| ● | Business Office       |
| ● | Plant                 |
| ■ | Research Laboratories |
| ● | Distribution Center   |