

BLINN COLLEGE Fact Book

2006-2007



Introduction

Using This Book

The *Blinn College Statistical Profile* is an annual publication of the Office of Institutional Research and Effectiveness. It is designed to provide reliable information about the college and its students. Information from this edition can be used to evaluate programs and operations and is a convenient Reference for answering the most frequent asked questions about the College. By reviewing the College's historical development and current trends, we may better anticipate and plan for the future.

Most tables from this document are available on the Blinn College web site (www.blinn.edu) under Institutional Research. Suggestions for the future editions are welcomed and encouraged. E-mail responses can be sent to us at Rebecca.Richter@Blinn.edu. We look forward to hearing from you.

Blinn College, the Junior College District of Washington County, is located in Brenham, Texas, and serves a 13 county service area with campuses in Bryan and Schulenburg. The school was founded in 1883 by the Southern German Conference of the Methodist denomination under the name of Mission Institution. In 1889 the name was changed to Blinn Memorial College in honor of the Reverend Christian Blinn of New York who had donated a considerable sum of money to make the school possible. The institution was originally founded for the purpose of training young men for the ministry, but in the course of time, to meet the demands of the public, academic courses were added. After operating for five years as an institution for men only, Blinn College was made coeducational in 1888. Until 1927 the school was of academy rank. In 1927 the Board of Trustees, under leadership of President Philip Deschner, organized a junior college.

In 1930 the school was merged with Southwestern University (Georgetown, Texas). In 1934, a new charter was procured by the citizens of Brenham, and a private nonsectarian junior college, under the name of Blinn College, was organized with nine regents as the board of control. In February 1937, all connection with Southwestern University and the Methodist denominations were severed. An election held in Washington County on June 8, 1937, for the purposes of creating a public junior college district and for levying a small tax, was successful. Blinn thus became the first county- owned junior college district in Texas. The college continues to operate as one of the largest of the state's 50 public junior/community college districts.

Mission

Blinn College exists for the primary purpose of serving educational needs of the people in its service area. Blinn College seeks to provide educational experiences and opportunities that will assist the student in developing intellectual curiosity, and social responsibility and skills and knowledge in support of a productive life. Underlying these basic goals is a strong commitment to instructional excellence through philosophical and financial support. The institution will be alert to the changing educational requirements of the region and endeavor to meet those needs. In order to accomplish the mission, the college has established the following objectives to provide:

1. Two years of accredited college level transfer courses in arts and sciences for those seeking associate degrees or intending to transfer to senior institutions.
2. Training to meet the changing needs of business and industry by preparing students in one-and two-year occupational courses leading directly to gainful employment.
3. Two-year technical -vocational programs leading to a degree or certification of proficiency, which will enable the student to enter industry or business with a marketable skill.
4. A developmental program for inadequately prepared students offering a variety of courses designed to assist such students in achieving success in college level courses.
5. Counseling and guidance services to assist students in achieving their educational and career goals and to provide them with information pertaining to careers and employment opportunities.
6. Assistance to new and established businesses in the college's service area including updating and upgrading employee skills.
7. Continuing education for the adult citizens of the community in credit or noncredit courses to improve their technical, professional, cultural and social skills, and knowledge.
8. An early admissions program for qualified high school juniors and seniors.
9. Adult literacy and other basic skills programs for adults.
10. Educational programs through museum exhibits and activities that focus on the historical and cultural heritage of Texas.

Blinn College Board of Trustees

President -. Mr. Steve Westbrook

Vice-President - Mr. Atwood Kenjura

Secretary - Mr. Norwood Lange

Trustees - Dr. Henry J. Boehm, Jr.
Mr. Leon Toubin
Mr. L.J. Lacina, Jr.
Mr. Don Jones

Administration

President – Don Voelter

Executive Vice President – John Barkman

Vice President Student Services – John Harris

Vice President Academic Affairs – Debra LaCour

Vice President Bryan Campus – Barbara Pearson

Vice President Business Services – Daniel Holt

BLINN COLLEGE ORGANIZATION BY FUNCTIONS

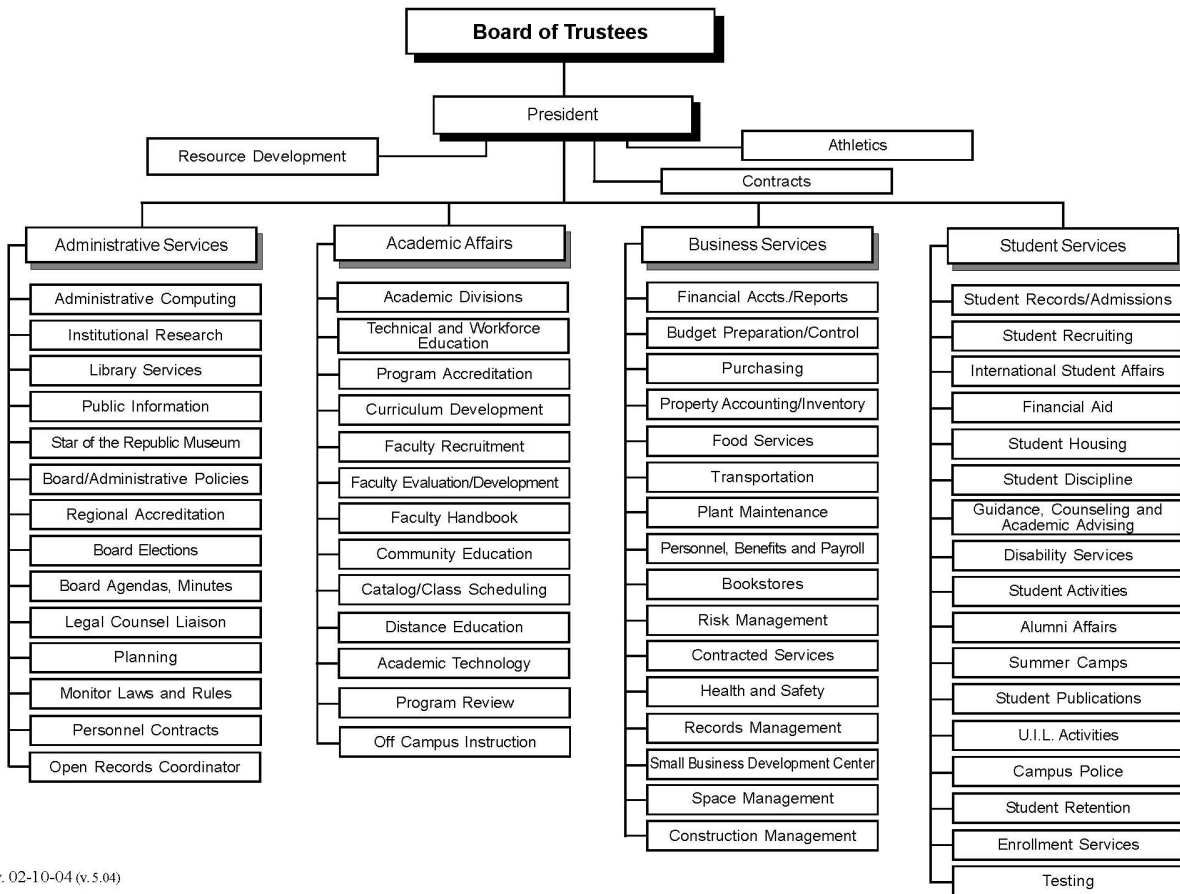


Table of Contents

Enrollment:

Enrollment Summary: Fall 2003 – 2007

Spring 2003 – 2007

Summer Session I 2003 - 2007

Summer Session II 2003 – 2007

Enrollment by Campus: Academic Year 2002 - 2007

Enrollment Calculations: Fall 2002 – 2007

Spring 2003 – 2007

Summer Session I 2003 – 2007

Summer Session II 2003 – 2007

Average Class Size: Blinn Graph Fall 2003 – 2007

Fall 2003 – 2007 – Brazos

Brenham

Schulenburg

Sealy (Fall 2004 – Fall 2007)

Student Profile:

Fall 2003 – 2007: Blinn College

Brenham Campus

Bryan Campus

Schulenburg Campus

Sealy Campus (Fall 2005 – Fall 2007)

Off-Campus

Student Profile:

Spring 2003 – 2007: [Blinn College](#)

[Brenham Campus](#)

[Bryan Campus](#)

[Schulenburg Campus](#)

[Sealy](#)

[Off-Campus](#)

Student Legal Residency:

Fall 2007: [Blinn College](#)

[Brenham Campus](#)

[Bryan Campus](#)

[Schulenburg Campus](#)

[Sealy Campus](#)

Transfer, Retention and Graduation Rates:

Blinn College Students Pursuing Higher Education –

Fall 2003 – Fall 2004:

[Report](#)

[Alphabetical](#)

[Percent](#)

Student Transfer & Migration Report:

[Fall 2003 – Fall 2004](#)

[Student Transfer and Retention Rates by
Graduates Fall 2002 – Fall 2003](#)

Transfer, Retention and Graduation Rates: (cont)

**[Student Transfer and Retention Rates by
Non-graduates Fall 2000 – Fall 2003](#)**

**[Baccalaureate Graduation Rates for FTIC
Undergraduates Fall 1995 – Fall 1999](#)**

[FTIC Transfer Rates 2000 - 2004](#)

**High School Graduates to Blinn College by
County and School District – Fall 2003 – Fall 2006**

Total Degrees Awarded 2000 - 2004

Degrees by Gender 2003 - 2004

Degrees by College District 2003 - 2004

Financial Statement Observations:

[Net Assets, Revenues, and Expenses](#)

Research Staff

Director:

[Rebecca Richter](#)

Phone: 979-830-4119

Fax: 979-830-4483

E-Mail: Rebecca.Richter@Blinn.edu

Research Assistant:

[John DeBlieux](#)

Phone: 979-830-4457

E-Mail: hn.Deblieux@Blinn.edu

Research Technician:

[Sherry Sandoval](#)

Phone: 979-830-4109

E-Mail: Sherry.Sandoval@Blinn.edu

Secretary:

[Leah Killebrew](#)

Phone: 979-830-4101

E-Mail: Leah.Killebrew@Blinn.edu



**BLINN
COLLEGE®**

Proven.

**The IR&E Office is located on the 2nd floor of the
Old Main building on the Brenham Campus**

