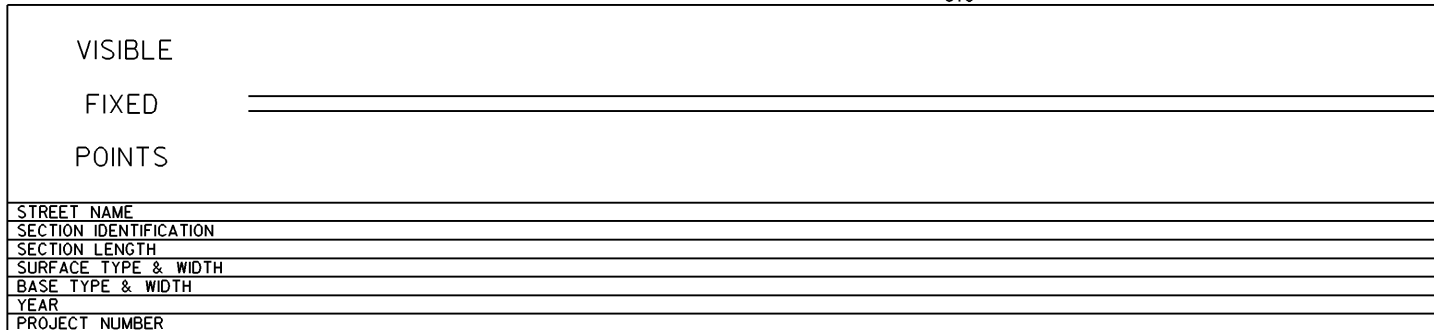
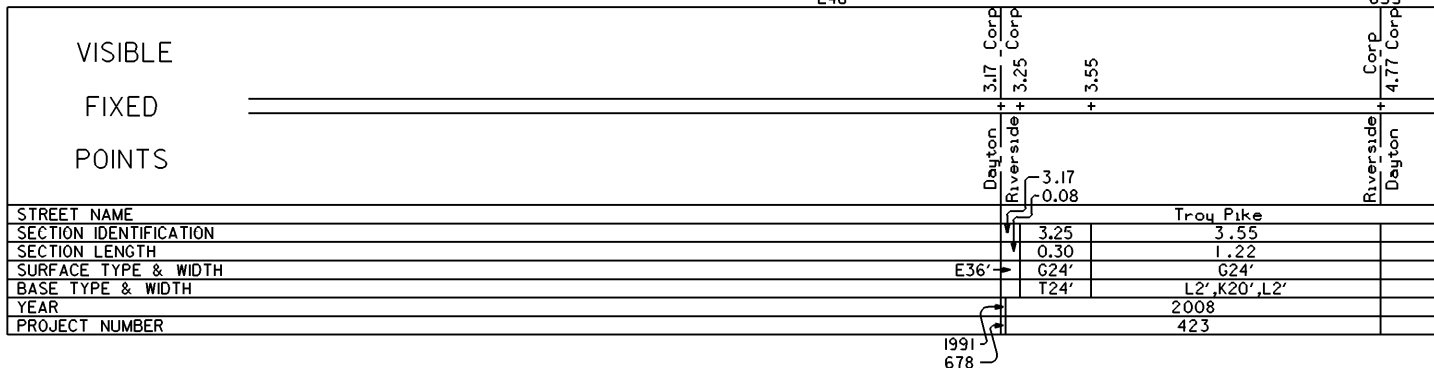
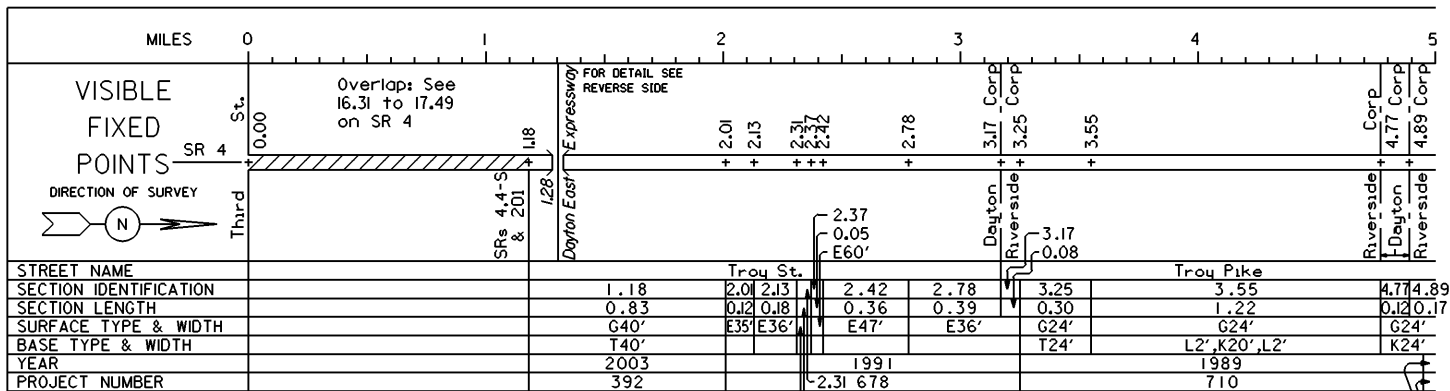
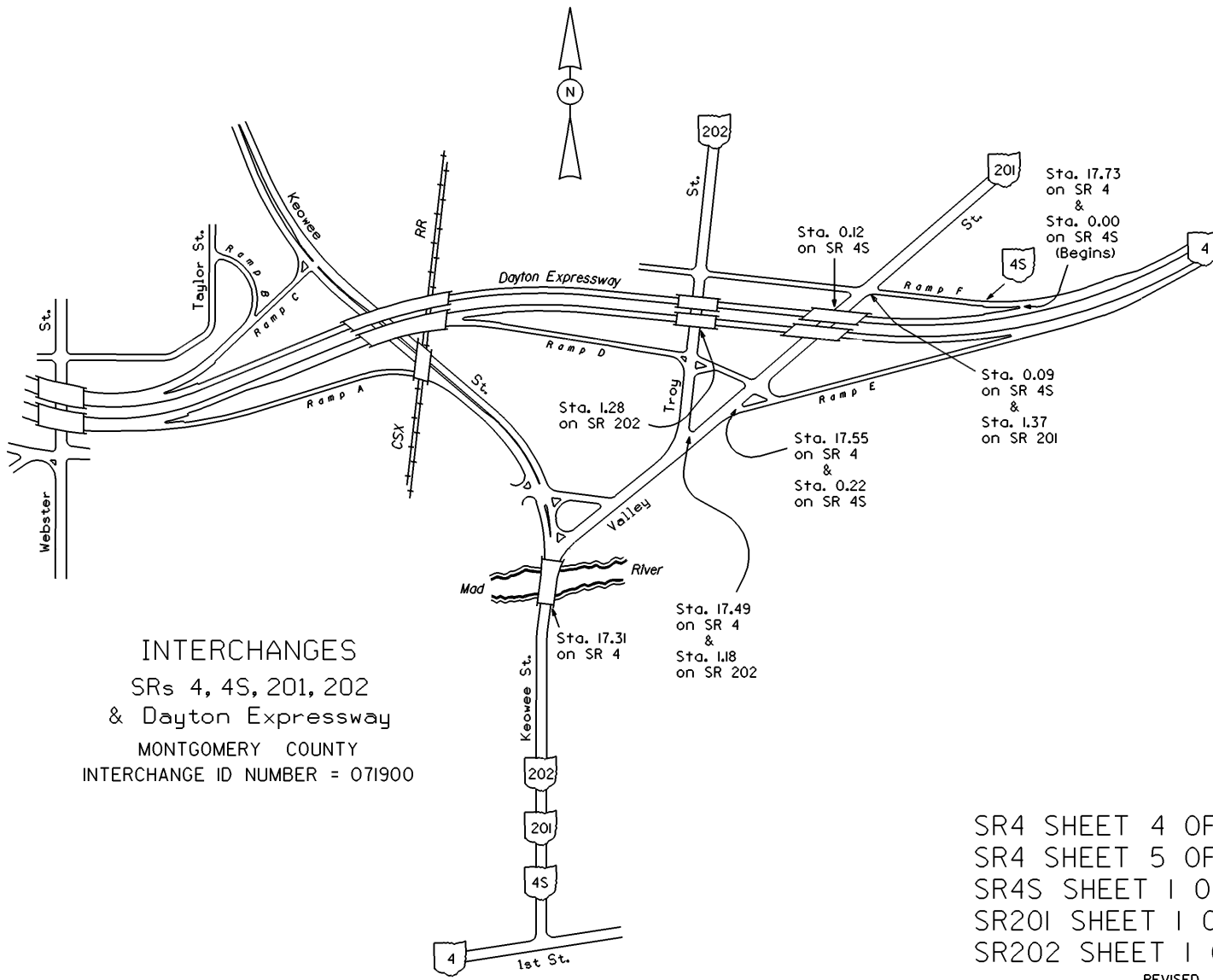


STATE OF OHIO - DEPARTMENT OF TRANSPORTATION  
STATE ROUTE SECTIONS ON CONTINUOUS MILEAGE STATIONING

DISTRICT 7  
COUNTY MONTGOMERY  
ROUTE SR 202



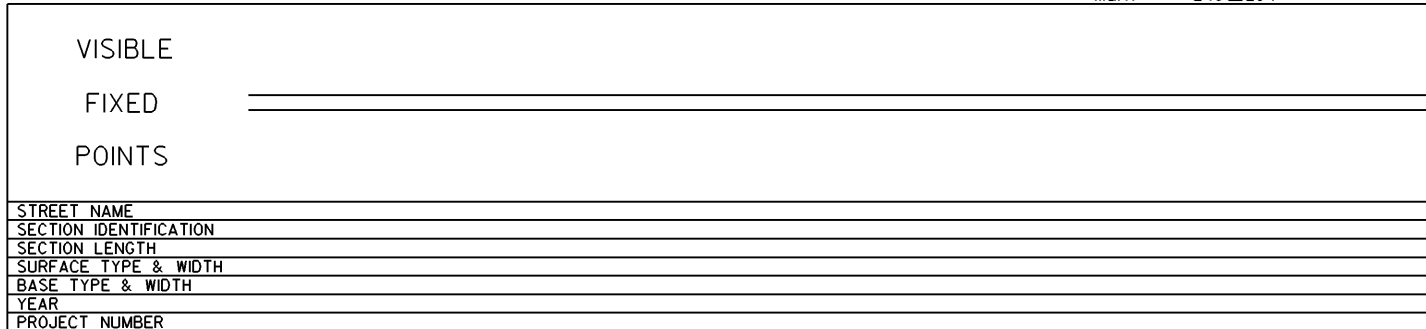
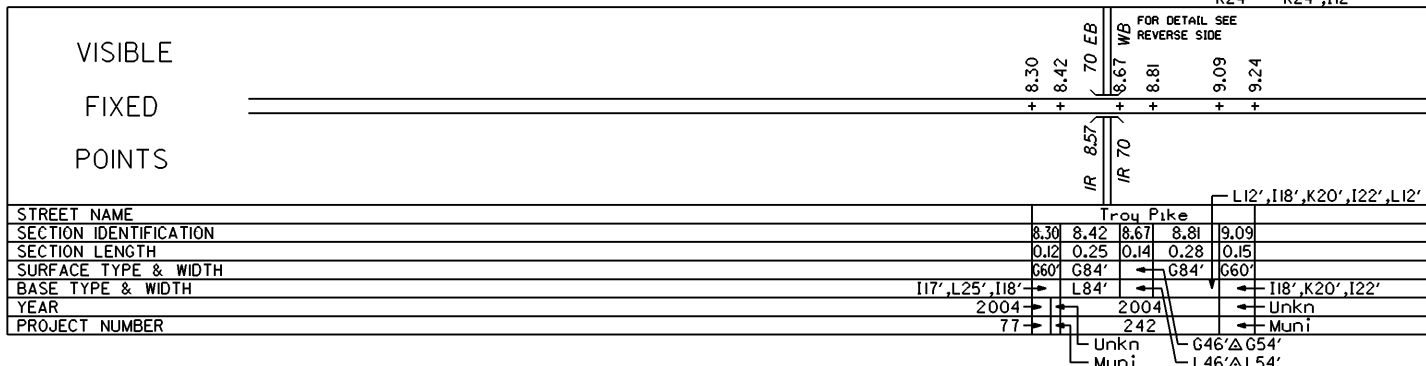
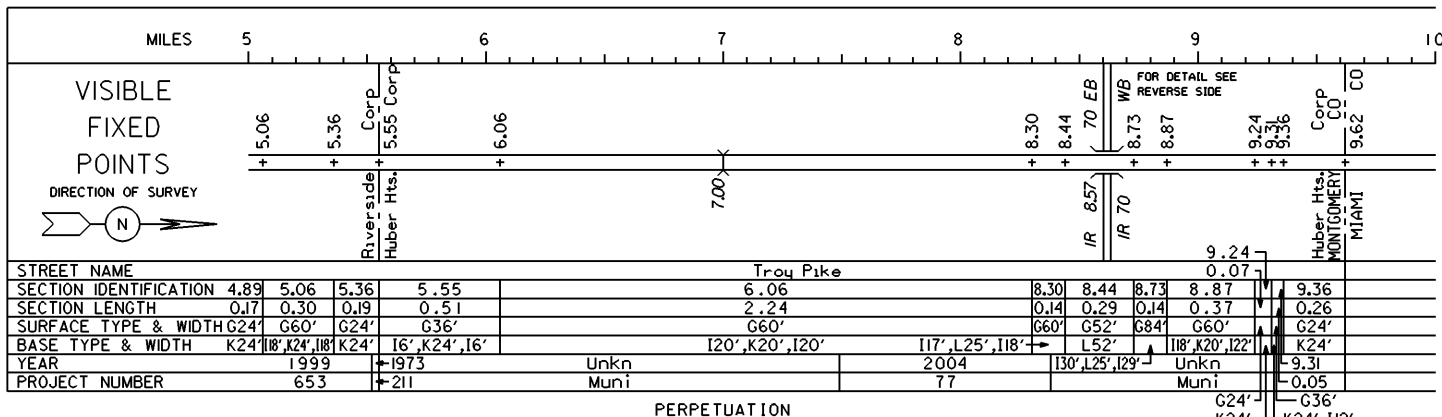


INTERCHANGES  
 SRs 4, 4S, 201, 202  
 & Dayton Expressway  
 MONTGOMERY COUNTY  
 INTERCHANGE ID NUMBER = 071900

SR4 SHEET 4 OF 6  
 SR4 SHEET 5 OF 6  
 SR4S SHEET 1 OF 1  
 SR201 SHEET 1 OF 3  
 SR202 SHEET 1 OF 2

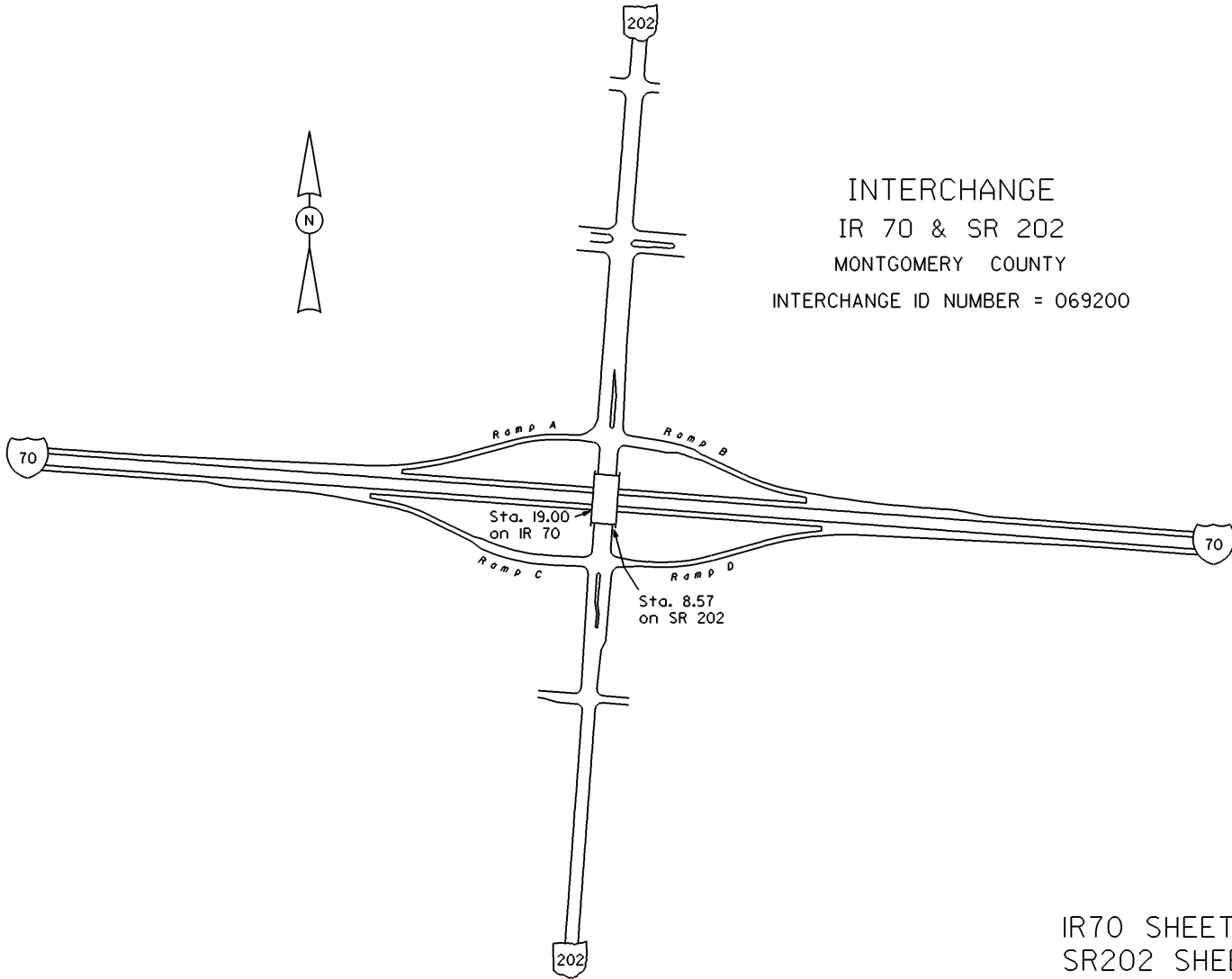
STATE OF OHIO - DEPARTMENT OF TRANSPORTATION  
STATE ROUTE SECTIONS ON CONTINUOUS MILEAGE STATIONING

DISTRICT 7  
COUNTY MONTGOMERY  
ROUTE SR 202





INTERCHANGE  
IR 70 & SR 202  
MONTGOMERY COUNTY  
INTERCHANGE ID NUMBER = 069200



IR70 SHEET 4 OF 5  
SR202 SHEET 2 OF 2

REVISED Jan 2007