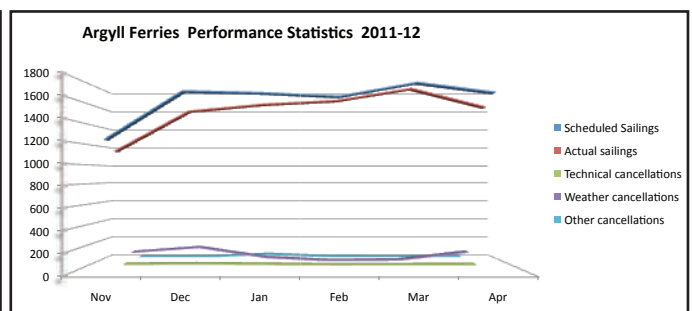
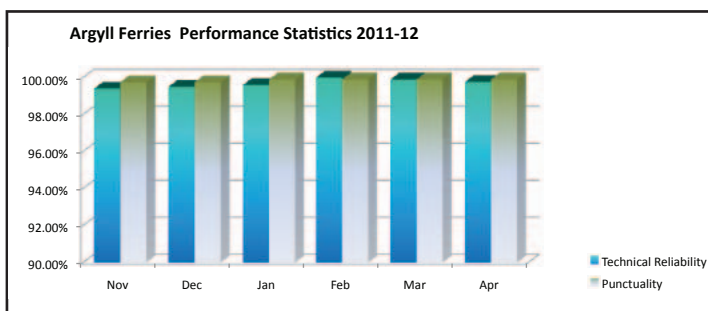


## Performance Update - May 2012

	Mar 2012	April 2012
Reliability *	99.9%	99.76%
Punctuality	99.9%	99.9%
Scheduled sailings **	1723	1635
Actual sailings	1711	1536
Non-weather-related cancellations	2***	8****
Weather related cancellations	10	91



\* Weather-related cancellations, or those due to circumstances beyond AFL's control, are not included in overall reliability figures

\*\* 1 sailing = 1 crossing in 1 direction

\*\*\* In March, 2 sailings were lost due to a fuel filter problem

\*\*\*\* In April, 4 sailings were lost to a fuel line leak and 4 were lost due to faults with the Gourock linkspan