

L A G E N D A  
1903

LD  
688  
1903



Bucknell University  
Library



Call No. LD 688

1903

Acc. No. 93929

FRIENDS OF THE  
BUCKNELL LIBRARY



PRESENTED BY

Eric Stewart



# L'Agenda

PUBLISHED BY THE

... Juniors of Bucknell University ...

VOL. X.

LEWISBURG, PENNSYLVANIA.

1902.

BUCKNELL UNIVERSITY  
LIBRARY

LD688

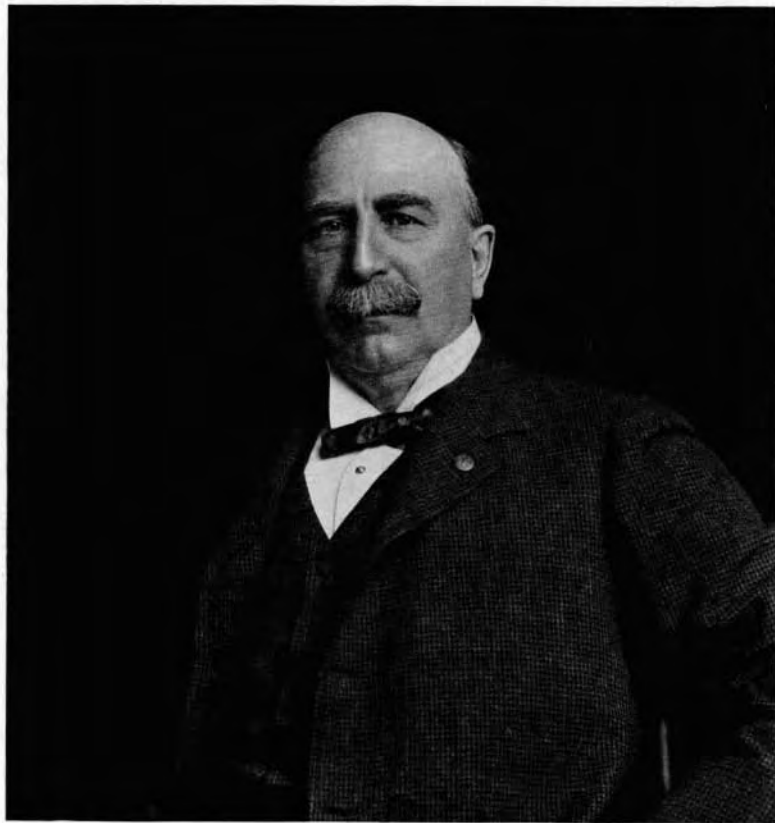
1903

## General Charles Miller.

**T**HE story of the life of General Charles Miller, of Franklin, Pennsylvania, presents many points that are interesting, stimulating and helpful. To his parents he is indebted for his pure blood, active mind and grand constitution, as well as for his excellent home training; but for the most of the other elements of his marked success, he alone is entitled to the credit.

When a boy eleven years old his family left the little country village in Eastern France, where he was born, and settled near Buffalo, in Erie County, New York. Among the first to recognize his ability, and to foresee for him a wide sphere of influence, was Joseph C. Sibley, M. D., a friend who aided him by wise counsel and substantial encouragement. Realizing from his own experience how valuable to one at the beginning of his career is the cordial interest of one of more mature years, who has learned more of life's lessons, General Miller has been conspicuous for his untiring devotion to the welfare of young men. Whether as teacher of a Bible Class, numbering over six hundred, or as Superintendent of one of the largest Sunday-schools in the State in proportion to population; or as President of a wide-awake and flourishing Young Men's Christian Association, whose gymnasium is equipped with the latest and most approved scientific apparatus; or as founder and supporter of the Miller Night School which trains young men so that they may earn a livelihood; or as a liberal and efficient trustee of several well known educational institutions, among them Bucknell University since 1894, and founder of the Charles Miller Fellowship in the University of Chicago for graduates of Bucknell University; or in the still broader field of giving employment to a multitude of persons in his many works, factories and commercial undertakings, General Miller's solicitude for the prosperity of all and each of those with whom he is associated or connected is his most prominent and highly appreciated characteristic.

To give details of a life so packed with activities of such wide scope as General Miller's has been would require a volume. For the purpose of this brief sketch an abridged summary—the merest outline—must suffice.



GENERAL CHARLES MILLER.

93929

The foundation of his wealth was acquired through the business now carried on by the corporation known as the Galena-Signal Oil Company. Of this great enterprise General Miller was the founder and is still the president and controlling spirit. There are over a dozen other important companies of which General Miller is president, and nearly half a hundred of which he is a director. He has been one of the Board of Directors of the American Jersey Cattle Club, twice Mayor of Franklin, for eight years President of the Pennsylvania Baptist State Mission Society, for ten terms Commander of the noted W. B. Mays Post, Department Commander of the G. A. R. of the State of Pennsylvania, a member of the State Board of Charities, and is at the present time the efficient Major-General of the National Guard of the State. His services in connection with the settlement of the great anthracite coal strike during the fall of 1900 were such as to win the approbation of the miners, also of most capitalists and of fair-minded, well-disposed people generally. Many schools, churches of all denominations and charitable institutions have been aided by General Miller's generous gifts. Though denied the advantages of a college education, General Miller has read and studied diligently many of the world's best books, and has, therefore, a rare fund of information from which he often draws to illustrate and enforce his very practical public addresses. He was the recipient a few years ago from Bucknell University of the degree of Master of Arts in recognition of his acquirements, his zeal for knowledge and his strenuous efforts in behalf of the cause of higher education.

His lively, genial manners, his honorable record in business transactions, together with his sincere desire to be of assistance to all classes of people, have, as might naturally be supposed, combined to win for him the high regard of a host of friends, and to render him one of the most popular men in the Keystone State. From various quarters of the Commonwealth he has been repeatedly urged to accept the Republican nomination for Governor. Such a nomination, as is well known, is equivalent to an election. But in view of the numerous vast mining and manufacturing interests and commercial projects demanding his attention, it has seemed incumbent on General Miller to forego all political honors, and he has, therefore, positively refused to allow himself to be considered a candidate. An appropriate testimonial to General Miller's powers of initiative and to the worth of his services in the realm of industry and trade was the conferring upon him during the past year by the French Government of the decoration of the Legion of Honor, an order instituted by the first Napoleon, and bestowed only upon great generals, scientists, historians, poets, statesmen, discoverers, and others of preëminent merit and achievement.

# GREETING





## Editorial.



GAIN the Junior Class of Bucknell University presents to the Alumni, students and friends of the institution our college annual, a catalogue of that second course of college, the one we all take at the same time that we pursue the curricula laid down by the authorities of the University. Here we have the real college life and spirit; have the song, dance and game; have the reckless youth, who dares so much and does so little.

We have followed closely in the track of our predecessors; so few new features will be found. The Alumni department is inserted for the benefit of the friends whose college days are over and who will be pleased to see old faces.

The various jokes and grinds are a necessary and interesting part of the book. If you are hard hit, remember that joke is for another to laugh at; if another is smitten, it is for your amusement.

We have worked to make a book that would reflect honor on the Class of 1903; what we have accomplished you may now determine.

“And what is writ is writ,—  
Would it were worthier!”





## The Board of Trustees.

CHAIRMAN, HARRY S. HOPPER, . . . . . 28 South Third Street, Philadelphia.  
SECRETARY, REV. A. JUDSON ROWLAND, D. D., . . . . . 1420 Chestnut Street, Philadelphia.  
TREASURER, REV. DAVID PORTER LEAS, A. M., . . . . . 400 South Fortieth Street, Philadelphia.

HON. E. A. ARMSTRONG, A. M.,  
JOHN P. CROZER, ESQ.,  
HIRAM EDMUND DEATS, ESQ.,  
CALVIN GREEN, ESQ.,  
HON. WM. B. HANNA, D. C. L.,  
PRES. JOHN H. HARRIS, LL. D.,  
HARRY S. HOPPER, ESQ.,  
REV. DAVID PORTER LEAS, A. M.,  
CRAIGE LIPPINCOTT, ESQ.,  
HON. HAROLD M. McCLURE, A. M.,

D. BRIGHT MILLER, A. M.,  
GEN. CHARLES MILLER, A. M.,  
GEORGE M. PHILIPS, PH. D.,  
REV. A. JUDSON ROWLAND, D. D.,  
REV. LEROY STEPHENS, D. D.,  
JAMES S. SWARTZ, ESQ.,  
ERNEST L. TUSTIN, A. M., ESQ.,  
JOSEPH K. WEAVER, A. M., M. D.,  
REV. HENRY G. WESTON, D. D., LL. D.,  
HON. SIMON P. WOLVERTON, LL. D.

# The College.

## The Faculty and Other Officers.

JOHN HOWARD HARRIS, PH. D., LL. D., President,  
And Professor of Psychology and Ethics.

\* FREEMAN LOOMIS, A. M., PH. D.,  
Professor of Modern Languages and Literature.

GEORGE G. GROFF, M. D., PH. D., LL. D.,  
Professor of Organic Sciences.

WILLIAM CYRUS BARTOL, A. M., PH. D.,  
Professor of Mathematics and Astronomy.

FRANK ERNEST ROCKWOOD, A. M., LL. D.,  
Professor of the Latin Language and Literature, and  
Dean of College.

WILLIAM GUNDY OWENS, A. M.,  
Professor of Physics and Chemistry.

ENOCH PERRINE, A. M., LITT. D.,

John P. Crozer Professor of Rhetoric and English  
Literature, and Secretary of Faculty.

THOMAS FRANKLIN HAMBLIN, A. M.,  
New Jersey Professor of the Greek Language and  
Literature.

LINCOLN HULLEY, A. M., PH. D.,  
Professor of History.

WILLIAM EMMET MARTIN, A. M.,  
Professor of Logic and Anthropology.

MISS EVELINE JUDITH STANTON, PH. M.,  
Dean of College Women.

\* On leave of absence.

NELSON FITHIAN DAVIS, SC. M.,  
Assistant Professor of Organic Science.

EPHRAIM M. HEIM, PH. D.,  
Professor of Economic and Political Science.

GUIDO CARL LEO RIEMER, A. M.,  
Professor of Modern Languages.

ELYSEE AVIRAGNET, A. M., MUS. DOC.,  
Instructor in Romance Languages.

ALBERT BURNS STEWART, A. M.,  
Instructor in Mathematics.

THOMAS JOHNSON MORRIS, A. B.,  
Instructor in Elocution.

MISS JENNIE DAVIS, PH. B.,  
Assistant in English.

MISS ELIZABETH LILLIAN FAUST, PH. M.,  
Reader in English.

HAROLD MURRAY McCLURE, A. M.,  
President Judge of Seventeenth Judicial District,  
Lecturer on Contracts and Practice.

FREDERIC EVANS BOWER, A. M.,  
Attorney-at-Law,  
Lecturer on Crimes and Torts.

ALBERT WILLIAM JOHNSON, A. M.,  
Attorney-at-Law,  
Lecturer on Real Property and Equity.

WILLIAM LEISER, M. D.,  
Lecturer on Surgery.

WEBER L. GERHART, M. D.,  
Lecturer on Anatomy.

CHARLES ALEXANDER GUNDY, M. D.,  
Lecturer on Pathology.

GEORGE DANA BOARDMAN, D. D., LL. D.,  
Lecturer on Ethics.

LEMUEL MOSS, D. D., LL. D.,  
Lecturer on Social Science.

BENAIAH L. WHITMAN, LL. D.,  
Lecturer on Practical Ethics.

WILLIAM EMMET MARTIN, A. M.,  
Librarian.

WILLIAM CHRISTIAN GRETZINGER, PH. B.,  
Registrar of the University

REV. CALVIN AURAND HARE, A. M.,  
Financial Secretary.



CLASSES  
CLASSES



## Candidates for the Master's Degree.

<i>Name.</i>	<i>Residence.</i>
LAURA LOUISE ALLEN, A. B., . . . . .	Coudersport.
ARCHIBALD MERRILL ALLISON, A. B., . . . . .	Spring Mills.
LYNDON ERNEST AYERS, A. B., . . . . .	Clifford.
CHARLES FRANKLIN BIDEISPACHER, A. B., . . . . .	Montoursville.
SARAH MARTHA BLACK, A. M., . . . . .	Lewisburg.
CATHERINE RUTH BOWER, A. B., . . . . .	Lewisburg.
IRVING HERBERT BUCKMINSTER, PH. B., . . . . .	Evanston, Wyo.
PERCY MYRON BULLARD, A. B., . . . . .	Williamsport.
CHARLES ERNEST BUNNELL, A. B., . . . . .	Kodiak, Alaska.
FRANK EUGENE BURPEE, A. B., . . . . .	New Orleans, La.
JAMES LLEWELLYN CATTELL, A. B., . . . . .	Chestnut Hill.
EMMANUEL WILSON COBER, SC. B., . . . . .	Philadelphia.
MARY PROTHEROE DAVIES, SC. B., . . . . .	Scranton.
JENNIE DAVIS, PH. B., . . . . .	Lewisburg.
AMOS KAPP DEIBLER, A. B., . . . . .	Sunbury.



<i>Name.</i>	<i>Residence.</i>
FRANK WEBER DILLON, A. B., . . . . .	Erie.
GLEN GIFFIN DURHAM, SC. B., . . . . .	Watson town.
MINNIE GERTRUDE ECKELS, PH. B., . . . . .	Edinboro.
DAVID HAYES ELLIOT, A. B., . . . . .	San Domingo, Cal.
ANDREW NEVINGER EVANS, A. B., . . . . .	Wood Island, Alaska.
JEROME CLARK FETZER, PH. B., . . . . .	Indiana.
LEVI TRUCKENMILLER FETZER, PH. B., . . . . .	New York City.
EDWARD FLINT, A. B., . . . . .	Oil City.
SIMON WARD GILPIN, PH. B., . . . . .	Virginia, Minn.
MARIA MAUDE GODDARD, A. B., . . . . .	Lewisburg.
BENJAMIN W. GRIFFITH, PH. B., . . . . .	Lock Haven.
EMMA BEULAH HAYES, PH. B., . . . . .	Lewisburg.
ELMER ELLSWORTH HESS, A. B., . . . . .	Huntingdon Mills.
KATHERINE MOTT JOHNSON, A. B., . . . . .	Payson, Utah.
MARY ANNA KLINE BUNNELL, PH. B., . . . . .	Kodiak, Alaska.
CHARLES DISON KOCH, PH. B., . . . . .	New York City.
CREIGHTON M. KONKLE, A. B., . . . . .	New York City.
RALPH FREDERICK KOONS, PH. B., . . . . .	Conyngham.
RUSH HARRISON KRESS, PH. B., . . . . .	New York City.
DANIEL HORATIO KRISE, PH. B., . . . . .	Mayfield.
SARAH ESTHER LEE, A. B., . . . . .	Jermyn.
CHARLES FRANKLIN MCMANN, A. B., . . . . .	Tecumseh, Neb.
HOWARD CURTIS MESERVE, A. B., . . . . .	Hartford, Conn.
JACOB HENRY MINNICK, A. B., . . . . .	Orrstown.
JOHN HENRY NEUHAUSER, A. B., . . . . .	Springfield, Ohio.
EDITH LEE PHILLIPS, A. B., . . . . .	Bridgeton, N. J.

<i>Name.</i>	<i>Residence.</i>
WILLIAM CAREY PURDY, SC. B., . . . . .	Big Run.
FRANK JOSEPH RAWLINSON, A. B., . . . . .	Rochester, N. Y.
EDGAR REED, A. B., . . . . .	Montoursville.
DAVID HOWARD ROBBINS, A. B., . . . . .	Pottsgrove.
EDNA SCHUYLER SHIRES, SC. B., . . . . .	Allegheny City.
THORNTON MOORE SHORKLEY, PH. B., . . . . .	Philadelphia.
HARRY COLLINS SIMONS, SC. B., . . . . .	Oak Lane.
AMANDUS MERKLE SMITH, A. B., . . . . .	Kutztown.
ARTHUR ANSON SMITH, PH. B., . . . . .	Williamsport.
HARRY THOMAS SPRAGUE, PH. B., . . . . .	Haddon Heights, N. J.
MYRA AMY SPRAGUE, A. B., . . . . .	Factoryville.
BENJAMIN FRANKLIN THOMAS, A. B., . . . . .	Factoryville.
LEWIS CLARK WALKINSHAW, PH. B., . . . . .	Greensburg.
BERTHA CELESTINE WATKINS, A. B., . . . . .	Chicago.
MARGARET ELLEN WENSEL, SC. B., . . . . .	Wilmington, Del.
MABEL ESTELLE WHEELER, PH. B., . . . . .	Marion, Va.
AUGUSTA GENEVIEVE WHITE, SC. B., . . . . .	Ann Arbor, Mich.
RUTLEDGE THORNTON WILTBANK, JR., PH., B., . . . . .	Chester.
CHARLES WAGNER WOLFE, A. B., . . . . .	Newton Centre, Mass.
JENNIE MAY WOOD, A. B., . . . . .	Factoryville.
ALICIA MITCHELL ZIERDEN, SC. B., . . . . .	Johnsonburg.



# Seniors.

## Officers.

<i>President,</i> . . . . .	JOHN W. McCRACKEN.
<i>Vice-President,</i> . . . . .	WILLIAM S. ROBINSON.
<i>Secretary,</i> . . . . .	MARY UNGER.
<i>Treasurer,</i> . . . . .	FRANK W. STANTON.
<i>Historian,</i> . . . . .	JAMES W. SNYDER.
<i>Poet,</i> . . . . .	FRANCES RACE.

COLORS—Red and Blue.

FLOWER—Carnation.

MOTTO—" *Merces Fidelis Certa.*"

YELL.

Who Ra! Who Ra! Who Ra! Who!  
Boomerang! Boomerang! Boomerang! Boo!  
Bucknell! Bucknell! 1902!

## History of 1902.

---



ONCE more we come to write the history of 1902. The historian has neither the space nor the inclination to present a detailed account of the events of the Class which is to us so dear, but is content with a short retrospect of our college life to which we soon shall bid farewell.

On an autumn day of '98, when all nature was at her best, seemingly bidding us welcome to dear old Bucknell, we made our "first appearance" in the comedy of errors, the fourth and last act of which we are about to complete. How kindly then we were received! How delightful the reception given by 1901 in the gymnasium! "Fortuna" smiled upon us, too, when we met that genial (?) hostess in "open air conflict." During this year we found our college friendships. Especially was this true among our classmates. Yes, we did a little grinding, but then that is characteristic of most Freshmen classes. Thus our first year ended.

Vacation is over and again we seek our home among the oaks. A change has come over us. Providence, somehow, has made us Sophomores and "wise fools;" indeed, so wise is our bearing that our new enemy, though legion, dare not attack us. The scenes of this act differ from those of the former. We perform no more daring feats of cavalry; blow-outs are the order of the day, and we have a goodly number of them if the Vg's dispensed this year at the laboratory is any criterion. Then, we learn of those honored gentlemen who wrote—wrote *real* poetry. By the time we are acquainted with those worthy bards the beautiful May days are here and we wander out to find the "wee, modest, crimson-tipped flower" to see if nature formed it rightly. A few of these pleasant rambles and vacation comes.

Again we enter upon another year. No more class scraps. No more midnight pranks to punish special *freshness*. All these things we consign to under-graduates, while we enjoy the *Maryland Club*, the evening social and dreamy waltz. Now we study to *pass*, not for *marks*. Yes, we go to class. Some of us even make a special oratorical effort to furnish entertainment for the other "fellows" who don't know half so much; and before we are aware of it the year is gone.

After spending another pleasant vacation, we enter upon the last act. Soon this will be complete and we will draw the curtain once for all on our college life at dear Bucknell. This year goes on much the same as the former ones. Our good athletes as usual keep our banner floating high. We work with, perhaps, a little more thought of the future struggle near at hand. We begin to realize what a grand course has been our march through the past. Our views have broadened, our habits have become fixed, and we have gathered strength and mental energy to meet the stern realities of life. Soon our friendships must be broken. As a Class we shall stop making history, but as individuals we shall each begin. Let us have hope for the future, and for whatever we may accomplish let us give all the glory and all the thanks to dear old Bucknell for showing us how to dare and do.

HISTORIAN.

### Senior Class Poem.

Gather once more as the gray dusk is falling,  
Bright was the day, but its sunshine has fled;  
Under the red and the blue let us linger,  
Breathing a sigh for the day that is dead.

Gather once more, as together we've journeyed  
Through the long hours in the noontide's fierce heat;  
Stand by the colors which never yet trampled,  
Wave a glad welcome wherever we meet.  
Once the day seemed all too long for our pleasure,  
Now 'tis gone past, and we linger to say:

Swift sped the moments we journeyed together,  
Easy the path o'er the much traveled way.  
Sad are we? Ah, but another day's coming!  
Out through the sunshine another path winds;  
Short it may be through the valley or highway,  
Rough it may be, or with flow'rs thickly twined.  
Tears must not glisten in eyes that look onward,  
Fear daunt the courage to dare and to do;  
On then, the day will pass quickly, remember  
Sure are rewards for the faithful and true.

## The Senior Class.

EDNA LORINE BACON, Π Β Φ, . . . . .	. . . . . Dividing Creek, N. J.
ORREN REGNALL BARRETT, . . . . .	Fisher's Ferry.
ABNER DETWILER BENTZ, . . . . .	Bloomsburg.
BENJAMIN FRANKLIN BIEBER, . . . . .	Pottsgrove.
CHARLES ISAIAH BOYER, . . . . .	Mandata.
HELEN WITTER BOUY, Π Β Φ, . . . . .	Milton.
EDWARD BURROWS, Φ Γ Δ, . . . . .	Keyport, N. J.
GEORGE T. COOPER, . . . . .	schellsburg.
JOHN DAVIS, Κ Σ, . . . . .	Nanticoke.
JOSEPH SANFORD DAVIS, Φ Γ Δ, . . . . .	Othello, N. J.
GERTRUDE JANE DEPPEN, . . . . .	Mt. Carmel.
MARTIN LINNÆUS DRUM, . . . . .	Shippensburg.
WILLIAM LEIGH DURHAM, . . . . .	Watsonstown.
CALVIN HAYS ELLIOTT, Φ Κ Ψ, . . . . .	Hartleton.
GEORGE WASHINGTON ENGLISH, Φ Γ Δ, . . . . .	Pittsburg.
CHARLES EDWARD GOODALL, Φ Γ Δ, . . . . .	Camden, N. J.
RAYMOND GREEN, Φ Κ Ψ, . . . . .	Lewistown.
CARRIE JEANNETTE HALFPENNY, Π Β Φ, . . . . .	Milton.
HENRY THOMAS HARVEY, JR., Κ Σ, . . . . .	Lock Haven.
ELI PETER HECKERT, . . . . .	Lewisburg.

SARAH ETHEL JUDD, . . . . .	Lewisburg.
THOMAS PHILLIPS KYLE, . . . . .	Brooklyn, N. Y.
WILLIS EDGAR MANEVAL, . . . . .	Liberty.
OLIN STACY VOKE MARTS, $\Phi \Gamma \Delta$ , . . . . .	Dividing Creek, N. J.
JOHN WILLIAM McCRACKEN, . . . . .	Kerrmoor.
JOSEPH EDWARD MILLEN, . . . . .	Stanton.
ANNIE E. NOAKAR, . . . . .	Milton.
JOHN BLACK PACKER, $\Phi K \Psi$ , . . . . .	Sunbury.
FRANCIS ANNA RACE, . . . . .	Scranton.
PHILIP REILLY, . . . . .	Philadelphia.
WILLIAM SAWYER ROBINSON, . . . . .	Moorestburg.
CHARITY MARGARET RUNYAN, . . . . .	Lewisburg.
FRANCES GERTRUDE SCOTT, . . . . .	Lewisburg.
JEANETTE BENNETT SHEPARD, $\Pi B \Phi$ , . . . . .	Baltimore, Md.
THOMAS ANDREW SHERBONDY, . . . . .	Bala
JAMES WILSON SNYDER, . . . . .	Fisher's Ferry.
FRANK WHITE STANTON, $\Phi K \Psi$ , . . . . .	Chinchilla.
MARY EDNA THATCHER, . . . . .	Lewisburg.
LEWIS EDWIN THEISS, $\Phi \Gamma \Delta$ , . . . . .	Bridgeton, N. J.
LEVI JOSEPH ULMER, . . . . .	Hepburn.
MARY A. UNGER, . . . . .	Danville.
YENCER WEIDENSAUL, $\Sigma X$ , . . . . .	Lewisburg.
JOHN HOLMAN WEISER, . . . . .	Mahantango.
LULU WELLIVER, . . . . .	Danville.
THOMAS LAMAR WILLIAMS, . . . . .	Mt. Carmel.
CHARLES ARTHUR WOODWARD, $K \Sigma$ , . . . . .	Bradford.
WILLIAM D. ZERBY, . . . . .	Sober.



# Juniors.

## Officers.

<i>President</i> , . . . . .	SYLVESTER B. DUNLAP.
<i>Vice-President</i> , . . . . .	JOHN B. COOK.
<i>Secretary</i> , . . . . .	IDA SUCHSINGER.
<i>Treasurer</i> , . . . . .	HELEN SELINGER.
<i>Historian</i> , . . . . .	ABRAM C. GUNTER.
<i>Poet</i> , . . . . .	EMILY R. EBLING.

COLORS—Scarlet and Steel Gray.

FLOWER—Red Rose.

MOTTO—“*Viam Invenimus aut Faciemus.*”

### YELL.

Boom! Boom! Boom!  
Riga Giga! Riga Giga!  
Boom! Boom! Boom!  
Zip! Bang! Ah!  
Rip! Rah! Ree!  
B. U., B. U., 19-3!



*Dreka, Phila.*

## Junior Class History.



UNIORS! How dear to your ears is the sound of those letters when true realization presents it to you. Yes, we are Juniors. We have reached the great stage of college life to which all under class men look forward with so much anticipation. We have made our way over a road blocked with Latin, Greek, mathematics, chemistry, and other barriers too numerous to mention. We are now traveling with ease (?) on the road of psychology, ethics and theism. We have reached the summit of the mountain and are descending rapidly toward the plain of active life. Do you ask whether we see the plain before us? No, we are still confronted with the impenetrable mist called Future. But why should we mention that, for it is the work of the Prophet and not of the Historian to reveal the Future. I shall, therefore, turn my attention to recording the events of the history which we have made since we entered the massive walls of old Bucknell.

Now, dear readers, turn back the wheels of time to the day known as September 21, 1899, and you shall see a Freshman Class of such size as was never seen before at Lewisburg; and before you have finished reading this history, you shall see that we possessed quality as well as quantity. We were Freshmen and fully realized the fact. We were strangers, but knew that in unity there is strength. Accordingly we set about to organize and prepare to meet any danger which might confront us. This was quickly and perfectly done, and in less than a month after our arrival we met for our first banquet, the happiest band of Freshmen that ever assembled around the festive board. There our organization was made complete by becoming personally acquainted with each other.

There had been some talk of "scrap" from the day we arrived at Lewisburg, but the Sophs were not as anxious as they pretended to be, and we repeatedly gave our yell and appeared in our class hats without the least sign of a "scrap."

The next event worthy of recording was the reception we received from our president, Dr. Harris. Words cannot describe the events of the evening, but let it be sufficient to say that the members of the class of 1903 will never forget the occasion.

After the holidays we all settled down to hard work and nothing of note took place for awhile. The night

before Washington's birthday was the time selected by the Sophs for their banquet, and they openly manifested their fear of Freshmen by having a strong force of "coppers" stationed about the hotel. But their fear was without ground, for the Freshmen allowed them to enjoy themselves in peace.

With the Spring term came the field and track athletics, and it was then that our athletes came forth and surprised the onlookers by carrying off the cup with scarcely a struggle. The Seniors had already boasted that they had held the cup through the entire college course, but they were compelled to surrender it to the invincible '03's.

Summer vacation.

Three months passed by and we returned to Bucknell. We heard that there were to be innumerable Freshmen. But the numbers were much exaggerated, as did they also exaggerate their own strength. The '02's spurred them on, for they wished to see their old foe defeated whom they dared not attack. A "scrap" was approaching. Almost a month had passed, '03 gave forth the war cry. There was no response. Why? Because '04 had none to give. Their response might be likened to that given by a flock of geese, which tries to frighten the enemy by hissing. The crowd had reached the top of the hill. '03 halted. The battle begun. At first it was a "scrap" between individuals, but soon '03 got into a solid formation and tore large holes in the mass of Freshies. For a whole hour the battle raged. Our formation remained firm against great odds, for we were outnumbered. The '02's were there to cheer on the Freshies. Who was there to spur us on? Were we alone? Ah, *Mais non!* Our class sisters were there. Every act was noticed and cheered by them. They were faithful to the end, and the part they took in the battle was not a small one. The result of the battle was well known. It was stopped by the Faculty before the Freshies were annihilated. One thing was clearly demonstrated. It had been intimated by '02 that we were afraid to "scrap." We had clearly shown that to have a "scrap" it was only necessary to have something with which to "scrap."

Nothing of much importance occurred until the following January, when we again assembled at the Haag to satisfy the inner man. The class decided that each one should choose his own way to get to Milton. We thus made evident the fact that we were not only able to stand together as a class, but as individuals, to outwit the Freshmen. For although they made a desperate effort to capture some of our men, we were all present. It is rumored that about twenty Freshmen went hunting for "Sophs" in the direction of Centre County. The events

of the evening defy description, but the evening will ever remain vividly upon the minds of those present as a most pleasant one.

During the winter term a class cup aroused special interest in basket ball, which was warmly contested for by the different classes. It soon became evident that there was no chance for either '03 or '04 to win the cup, but they were so evenly matched that it became a side issue as to which was the better of the two classes. The interest in the game exceeded that of the 'Varsity games. Each class did all in their power to win. Our game was played with a tie score. Also a second game. Five minutes were added, and still the score was tie. Five minutes more were added. The fates were against us and we went down in defeat but not in disgrace. We bore our only defeat bravely and gave all the credit to our rivals.

Spring term again and with it field and track athletics. The Freshmen were still flushed with their basket ball victory. They predicted another victory, but they were false prophets, for in the contest the other three classes combined could not tally as many points as 1903.

Summer vacation passed and we returned to Buckn ll again. But what change time and the Faculty had wrought upon us. We were no longer green Freshmen or foolish Sophs. All the childish pranks of college life had passed away; we were dignified Juniors. We had noble things to occupy our minds; there was the Junior debate for the orators, the L'AGENDA for the wits, mechanics for the scientists, French for a dessert for the classics, and psychology enough for all. But we were ag·in equal to the occasion and are now settled down, and each one feels that the duties of active life are fast coming upon us, and we are straining every effort to get ready for them. Pulpits must be filled. Faculties are incomplete. Physicians and lawyers are not plentiful enough. We must have an airship. Old politicians are dying off. Love and courtship must not be neglected (but please do not ask me for particulars. Dr. Moss discussed the social question in an excellent manner)

These are a few of the problems which now confront us. But our class stands a unity and we rejoice in accomplishing our tasks.

Pardon me if we get too poetic, but we think we can express the feeling of every Junior in these lines :

New hope may bloom and days may come,  
In which our fame and wealth may swell;  
But there's nothing half so swell in life  
As being a Junior at old Bucknell.

HISTORIAN.

## Junior Class Poem.

---

You may sing of the grave old Seniors,  
How bold the Sophomores be ;  
You may tell of the prowess of Freshmen,  
But give me old Nineteen Three !

You may boast of the swells of the Seniors,  
Relate pranks of the Sophomores gay,  
Foretell the greatness of Freshmen,  
But for me the Scarlet and Gray.

I sing of the deeds and the heroes,  
Of our dear class of Nineteen Three,  
Of what they have done and are doing,  
Loved Alma Mater for thee.

Our class was very original,  
Ne'er bound by custom were we ;  
We banqueted in October,  
And there danced in merry glee.

E'en "Prexy" saw what a wonder  
This class was destined to be,  
So he bade us all to a "lay out,"  
Though no ice cream that night had we.

When Sophs not at all conceited,  
'Tis a miracle, too, we're told ;  
For we "did" the poor, meek Freshmen,  
Green as the grass in which they were rolled,

In basket ball, though evenly matched,  
Our boys had indescribable pluck ;  
We did not acknowledge defeat,  
For the victory was due to mere luck.

Oh, foolish Freshmen ! to ask  
Who holds the mirror cup ;  
We won it from Nineteen Hundred,  
Nor have we yet given it up.

And now that we are Juniors,  
We are dignified, stately and grave,  
Though we painted the town green last year,  
Now we show the Seniors how to behave.

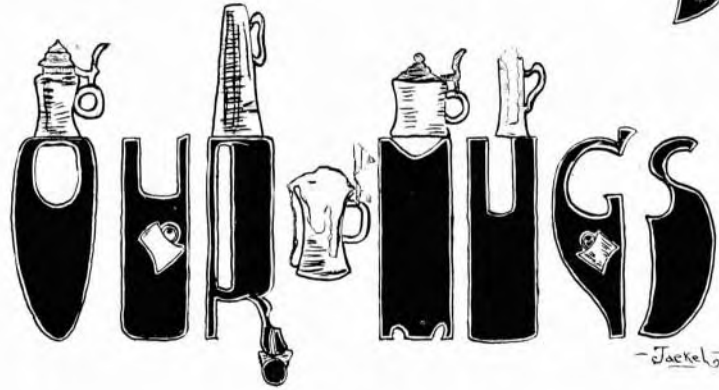
This the story of past and present ;  
Oh, what shall the future be  
Of each boy and girl in our circle ?  
May they to the world useful be.

Then rally, ye sons and daughters,  
Under the banner of Nineteen Three ;  
Nothing daunted, be true to our motto,  
The world will much better be.

And strive to look up and lift up,  
As on life's journey you go ;  
Make happy the hearts of others,  
True happiness then you will know.



"W JUNIORS"



-Jackel-



SARA H. AYERS, . . . . . Hightstown, N. J.  
 Peddie Institute; Scientific; Teaching.  
 "Here you felt by the sense of its beauty reposed,  
 That you stood in a shrine of sweet thoughts."

IRWIN ALBERT BARTHOLOMEW, . . . . . Sunbury.  
 Bloom-burg State Normal; Susquehanna University; Scientific; Teaching.  
 "I need no grind; I am one."



JOHN WEISER BASSLER, . . . . . Sunbury.  
 Bucknell Academy; University Band; Scientific; Junior Prom.; Law.  
 "Some love two and some love three,  
 I love one and that is me."



WALTER BERTOLETTE, Φ K Ψ, Θ Δ T, . . . . . Mauch Chunk.

Montclair Military Academy; Mgr. L'AGENDA; Sec. Dramatic Association;  
Mgr. Minstrels; Chairman Junior Prom.; Scientific; Law.

"I turn in my toes, I have a big nose;  
But it is all in the family, as everyone knows.  
I have a nice girl in society's whirl,  
Who, though taller than I, is my dear little pearl."



HARRY EDMUND BILGER, . . . . . Curwensville.

Curwensville High School; Latin Phil; Law.

"Wit from the soles of his feet down, and from the crown of his head up."

GEORGE RIPLEY BLISS, . . . . . Washington, D. C.

Washington High School; Entered Junior Class from Columbia University;  
Classical; Law.

"Where ignorance is bliss  
'Tis folly to be wise;  
But when Bliss flunks in class  
This boy nearly cries."





JOANNA BOYCE, . . . . . Wellsboro,  
 Wellsboro High School; Latin Phil.  
 " Prompt to assail and prone to take offence,  
 Invulnerable in her impudence."



JOHN JAY BRANDT, Φ Γ Δ, . . . . . Marietta.  
 F. and M. Academy; Glee Club; Junior Prom.; Classical; Law.  
 " While I keep my senses I shall prefer no one to myself."



REMEMBRANCE FORDE BRESNAHAN, . . . . . Etra, N. J.  
 Peddie Institute; Classical; Ministry.  
 " I want to be a preacher,  
 And in a pulpit stand;  
 And preach to Bucknell sinners,  
 Seen on every hand."

JESSICA BUTLER, . . . . . Wattsburg.

Edinboro State Normal ; Latin Phil.

“ This is my aim to change my name,  
So I'll wed bright Wilcox of Princeton fame.”



ELVIE SARAH COLEMAN, H B Φ, . . . . . Reynoldsville.

Reynoldsville High School ; Latin Phil. ; L'AGENDA Board.

“ To know her is to love her.”

JOHN BELMONT COOK, . . . . . Forestville, N. Y.

Forestville Academy ; *Mirror* Board ; *Orange and Blue* Board ; Second Preliminary Junior Debate ; Scientific ; Civil Engineering.

“ Cook, Cook come blow your horn,  
The pigs are in the clover, the cows in the corn.  
'Tis agony to all when your horn you play,  
It makes man and beast both fly away.”





ALEXANDER FOREST DERSHIMER, . . . . . Scranton.  
 Scranton High School; Keystone Academy; Asst. Base Ball Mgr.;  
 Scientific Civil Engineering.  
 "I, to myself, am dearer than a friend."

SYLVESTER B. DUNLAP, Σ A E, . . . . . Montoursville.

Lycoming Co Normal School; Demosthenian; Shakespeare Club; I'AGENDA  
 Board; Class President; Mgr. Foot Ball Team (1902); Latin Phil. Law.

"Ambitious, reserved, eloquent; of whom all the world  
 Might stand up and say, that is an — Σ A E."



EMMA REBEKAH EBLING, . . . . . Danville.

Danville High School; Classical; I'AGENDA Board; City Missions.

"So Good-all, her actions;  
 So Good-all, her ways;  
 She might have it written:  
 She's good all her days."



MERLE MOE EDWARDS,  $\Phi \Gamma \Delta$ , . . . . . Lewisburg.  
Bucknell Academy; Asst. Foot Ball Mgr.; College and Class Track Team;  
Scientific; Medicine.

"There are not many more in the world like me."



CHAS. FRED EISENMENGER, . . . . . Warrensville.  
Shurtleff Academy; Ottawa Academy; Shakespeare Club;  
Pres. of Y. M. C. A.; Classical; Ministry.

"A good fellow I know,  
But stubborn as an ass,  
He'll learn some day  
He can't run our class."

MANSFIELD FRENCH FORBELL, . . . . . Lynbrook, L. I., N. Y.  
Mt. Pleasant Institute; Shakespeare Club; Classical; Ministry.

"If he is not in love there's no truth in the old signs."





JANE RIDGEWAY FOWLER, Π Β Φ, . . . . . Olean, N. Y.

Olean High School; Classical; Teaching.

"Livy's advice to Jane: 'Ne vestigia moveris,' *i. e.*, Do not move from your tracks. Our advice to other girls: 'Ne vestigia Janæ indicaveritis,' Do not look at Jane's tracks."

JAMES VILLARD FRAMPTON, Σ X, . . . . . Clarion.

Clarion Classical School; Law.

"I'd rather be Frampton than President."



HARRY PARKER FRIEND, . . . . . Philadelphia.

Central High School, Phila; Shakespeare Club; Classical; Ministry.

"Here's to the man who rides his own horse,  
Fakes all the Profs and gets good grades of course;  
At work all the evening, then up with the dawn,  
He preaches each Sunday, although people yawn."

MARY ALMA GARRISON, . . . . . Bridgeton, N. J.  
South Jersey Institute; Classical.

"Looks as if she had walked straight out of the Ark."



JOSEPH ELLSWORTH GLASPEY, . . . . . Bridgeton, N. J.  
South Jersey Institute; Shakespeare Club; *Orange and Blue* Board; College and  
Class Track Team; Asst. Foot Ball Mgr; Classical; Civil Engineering.

"When I beheld this I sighed and said within myself,  
'Surely Man is a Broom-stick.'"

HANNAH GOODMAN, Π Φ . . . . . Philadelphia.  
Lewisburgh High School; Bucknell Institute; Classical.

"The brightest thing that ever came within this classic hall,  
Is our dear, jolly Hannah, so slim and yet so tall."





ABRAM CYRUS GUNTER, . . . . . Mt. Pleasant.  
 Mt. Pleasant Institute; Shakespeare Club; Class Historian; Classical;  
 Teacher.

"If he had been you, and you he,  
 Thou must have slept like him."

REESE HARVEY HARRIS,  $\Phi \Gamma \Delta - \Theta \Delta \Upsilon$ , . . . . . Lewisburg.  
 Bucknell Academy; Shakespeare Club; Demosthenian; Class of '71 Prize;  
 Tennis Tournament; Classical; Architect.

"'Tis true I am conceited, but I have reason to be."



SAMUEL A. HART, . . . . . Ringtown.  
 Keystone State Normal; Mandolin and Guitar Club; Classical;  
 Civil Engineering.

"The faults rest with the gods who have made him so stupid."





FREDERICK BLAIR JAEKEL,  $\Phi \Gamma \Delta$ , . . . . . Huntingdon  
 Lawrenceville; Mercersburg; Lafayette; Scientific; Civil Engineering.  
 " Author of two original jokes."



JAMES LLOYD KALP,  $\Phi \Gamma \Delta$ , . . . . . Mt. Pleasant.  
 Mt. Pleasant Institute; Latin Phil.; Law.  
 " Satan, so call him now, his former name is heard no more in Heaven."

WILLIAM LAWRENCE KALP, . . . . . Mt. Pleasant.  
 Mt. Pleasant Institute; Shakespeare Club; Classical; Surgery.  
 " A little, curly-headed, good-for-nothing and mischief-making monkey  
 from his birth."





WALKER BRUCE KESTER, . . . . . Curwensville.

Lumber City Normal; Shakespeare Club; Mandolin and Guitar Club;  
Latin Phil.; Civil Engineering.

“After I have named the man I need say no more.”

MARY LILA LONG, Π Β Φ, . . . . . Williamsport.

Williamsport High School; L'AGENDA Board; Classical; Teaching.

“Man wants but little here below,  
Nor wants that little Long.”



IDA EVELINE LUCHSINGER, . . . . . West Pittston.

Keystone Academy; L'AGENDA Board; Classical.

“Though quite unknown to Bucknell boys,  
She is a precious gem;  
We look for her to do great things  
Without the help of men.”

OGLESBY JAMES MCNITT, Σ A E, . . . . . Siglersville.  
Latin Phil.; Law.

"Is nct the winding up of witnesses and kicking more than half the business."



WILLIAM NOGEL MARSH, Σ X, . . . . . Lewisburg.  
Bucknell Academy; Law.

"I'm going to have a high career whatever that may be."

HARRY SILL MAUSER, . . . . . McEwensville.  
Latin Philosophical.

"Do not wound my spirit; treat me kindly."





ROBERT SIMINGTON MOORHEAD, . . . . . Milton.  
Milton High School; Scientific; Business.  
"I really feel as if someone is looking at me."



WALTER KREMER RHODES, . . . . . Fairplay.  
Cumberland Valley St. Normal; Shakespeare Club; Demosthenian; Latin  
Phil.; Civil Engineer.  
"We don't know who he is; he's not mentioned in the Bible."



GRACE BROWNING ROBERTS, II B Φ, . . . . . Williamsport.  
Friends' High School, Philadelphia.  
"According to Robert's Rules of Order, did Charles have a right to  
Pierce Grace's heart?"

HELEN AGATHA SELINGER, . . . . . McKean.

Edinboro St. Normal; Latin Scientific; Law.

"O, foolish girl! thou seekest a greatness that will overwhelm thee."



WALTER WETMORE SENN, K Σ—O Δ T, . . . . . Williamsport.

Williamsport High School; Glee Club; Dramatic Club; Minstrel;

L'AGENDA Artist; Foot Ball Team; Scientific Medicine

"Knows what he knows,  
As if he knew it not;  
What he remembers  
Seems to have forgot."

MORTON RUTHERFORD SHELDON, . . . . . Springboro.

Edinboro Normal; Allegheny College; Shakespeare Club; L'AGENDA Artist;

*Mirror* Business Mgr.; Scientific; Ministry.

"Dead he is not, but departed; for the artist is selling books."





CHARLOTTE ELLIOT SHIELDS, . . . . . Lewisburg.

Bucknell Institute; Classical; Missionary.

“ Can anything impure or base dwell within such a temple?”



CHAS. CUSHMAN SHORKLEY, . . . . . Lewisburg.

Lewisburg High School; Scientific.

“ As for me all I know is that I know nothing.”



JACOB FREDERICK SIEGEL,  $\Phi \Gamma \Delta$ , . . . . . Hamburg, N. Y.

Mercersburg Academy; Base Ball Team; Class Pres.;  
Scientific; Business.

“ Jacob Frederick is my name,  
Loaf my occupation,  
'Tis for my girl in Watontown  
To make an alteration.”

FRANK KING SINGEISER, . . . . . Allentown.

Allentown High School; Muhlenberg College; Extempore; Second Preliminary,  
Junior Debate; Freshman and Sophomore Declamation  
Prizes; Classical; Ministry.

"A pious fraud."



JOHN MCKISSICK SNOW, . . . . . Franklin.

Franklin High School; B. U. Orchestra; University Band;  
B. U. Quartette; Classical; Medicine.

"E'en Dame Nature forgets herself and makes mistakes."

CLOYD NILLIS STEININGER, . . . . . Lewisburg.

Bucknell Academy. Shakespeare Club; I'AGENDA Board; Second Prelimi-  
nary Debate; Latin Philosophical; Law.

"The world knows nothing of its greatest men."





ANNA STEPHENS, . . . . . Lewisburg.

Bucknell Institute; Scientific; Trained Nurse.

“I attend to the business of others, having lost my own.”

GEORGE HERBERT STEWART, . . . . . Lewisburg.

Bucknell Academy; Classical; Civil Engineering.

“I have much within myself that pleases me.”



ROBERT JOSIAH TERREL, . . . . . New York City.

Maryland Seminary, Washington, D. C.; Extempore; Second Preliminary,  
Junior Debate; Greek Philosophical; Ministry.

“Weigh the man, not his title; 'tis not the king's stamp can make the  
metal better or heavier.”



MARTHA JANE THOMAS, . . . . . Frostling, Md.  
 Woman's College of Richmond; Sophomore Declamation Prize;  
 Philosophical.

"Wilt thou have music? Hark! Martha fiddles  
 And twenty caged nightingales do sing."



CARL WAYLAND TIFFANY, Φ Γ Δ, . . . . . Fleetville.  
 Keystone Academy; Relay Team; 'Varsity Track Team Capt.; Editor-in-  
 Chief L'AGENDA Board; Classical; Law.

"In the Junior year this young man's fancy  
 Lightly turns to thoughts of love;  
 Then he finds his cap well fitting,  
 And he'll all its pleasures prove."

DAVID ROBINSON WALKINSHAW, Κ Σ, . . . . . Greensburg.  
 Greensburg High School; Shakespeare Club; Mandolin and Guitar Club;  
 Manager Track Athletics; Classical; Ministry.

"One of the few immortal men who are not born to flunk."





ELI SLIFER WALLS, Σ X, . . . . . Lewisburg.

Bucknell Academy; Scientific; Medicine.

“Prithee, why so pale, dear Slifer;  
Prithee, why so pale?  
When ‘Prexy’ calls on you in Ethics  
You bluff it straight; what need to quail?”

HOWARD KING WILLIAMS, . . . . . Philadelphia.

Central High School, Phila.; Classical; Ministry.

“Measure your mind’s height by the shadow it casts.”



ROGER HENRY WILLIAMS, . . . . . Forrest City.

Peddie Institute; Shakespeare Club; Extempore; Glee Club; B. U.  
Quartette; Classical; Ministry.

“Were singing his only fault we could forgive him.”



JOHN ADAM YOUNG, . . . . . New Columbia.

Bucknell Academy; College and Class Track Team; L'AGENDA Board;  
Shakespeare Club; Junior Prom.; Latin Philosophical; Teaching.

"I'll never fall in love I know,  
Too young I'll ever stay;  
Though any girl would marry me,  
For she'd be Young for aye."



# Officers.

- President*, . . . . . WALTER S. WILCOX.  
*Vice-President*, . . . . . WALTER S. GEARHART.  
*Secretary*, . . . . . INEZ FIKE.  
*Treasurer*, . . . . . BENJAMIN F. WHITE.  
*Historian*, . . . . . THOMAS E. CULE.  
*Poet*, . . . . . BLANCHE BANE.

COLORS—Purple and Lavender.

FLOWER—Violet.

MOTTO—"Unus Summus."

YELL.

Prix! Prax! Prickety quacks!  
 Kille! Kizzah! Kezzang!  
 B. U., o-4! B. U., o-4!  
 Zip! Bing! Bang!





## Sophomore Class History.

**T**HE warlike Romans when conquering eastern nations had no idea that they were making history that would be taught to future generations. Alexander and his invulnerable army didn't think that their achievements would astonish the civilized world; neither do we expect world-wide recognition for our illustrious deeds. For the present we will rest satisfied with the conviction that we have made an indelible mark on that band of students called Freshmen. The powerful hand of Time will not be able to efface from their memories the impressions they received in front of West College on September 25th.

On this memorable morning the Sophomores walked up the path from chapel with the air, dignity and majesty of Caesar's army. Following behind came the terrified Freshmen wondering when the "Sophs" would make an assault upon them. Upon arriving at the top of the hill the expected happened. At the signal "Right about face," the Sophomores, at lightning speed, rushed down the hill through a chaotic, undisciplined mass of human beings, terrifying some beyond the power of expression. Immediately the air reverberated with the call "Sophs this way." After several rushes both classes halted in front of West College. It was here that we learned our weakness. Many of our numbers had not yet returned to school; but the battle having begun we decided to prove that we were as loyal as we were brave.

Then turning to the men,  
Quoth famous "Coxy" then,  
"Though they to one be three,  
Be not amazed.

Yet have we well begun,  
Battles so bravely won  
Ever more to the sun  
By fame are raised."

The conflict waged fiercely for a half hour. Then, through the interference of the upper-classmen, the strife came to an end with the victory resting on neither class. But for loyalty and bravery all agreed that 1904 highly distinguished themselves.

As time passed on it became necessary to suppress their childish ways by making an object lesson of some of the Freshies. Their being compelled to deprive themselves of embellishments on upper lip, walk for miles over green fields and hedges, pump water and sing like nightingales, it is needless to say, had the desired effect.

Now, on closing, we look into the future with confidence, firmly believing that in whatever we undertake we shall succeed.

HISTORIAN.

---

## The Song of the Sophomores.

---

### I.

Once, in the days of the Autumn, came in a mighty band,  
Women and men to a college, the fairest in all the land,  
Seventy up to the Hilltop, half-a-score to the Sem.,  
This is the Song of the Sophomores; hear ye the story of them!

II.

Noble were they and manly, skilful and brave withal,  
Straight from the shoulder in battle and cunning in basket ball.  
Never they turned nor faltered, never they swerved nor swayed,  
And they played a game as the coaches declared that it should be played.

III.

Whether, clad in their sweaters, they counted points by the score;  
Whether they strove in study, conning their Horace o'er;  
Whether in trial of muscle; whether in learning's skill,  
These were the men who conquered, these were the winners still.

IV.

Who shall sing of their greatness, whose be the honor due  
To scribe on the page of glory their valorous deeds and true?  
Virgil wrote of Aneas, Homer of heroes told,  
But these be the greater heroes than those of the days of old.

V.

This is the Song of the Sophomores; listen, and hear, and heed,  
Marvel anew at their valor, showing in every deed.  
Give them a cheer, my brother, three times three, and again,  
Who "are neither demons nor gods, but men in a world of men."



## The Sophomore Class.

FORD DORRANCE BACON, . . . . .	Harveyville.
BLANCHE ALLYN BANE, Π Β Φ, . . . . .	Norristown.
RALPH LESHER BELFORD, Σ Α Ε, . . . . .	Milton.
PERCIVAL DEWEES BROWNING, Σ Α Ε, . . . . .	Orbisonia.
GAUL, CARRIER, Σ Α Ε, . . . . .	Summerville.
CARROLL CARUTHERS, Κ Σ, . . . . .	Irwin.
WILLIAM FRANK CARUTHERS, Δ Τ Δ, . . . . .	Irwin.
HALDY M. CHRIST, Φ Γ Δ, . . . . .	Millersville.
THOMAS EDWARD CULE, . . . . .	Plymouth.
LEWIS BAYARD CUSTER, Κ Σ, . . . . .	Llanwellyn.
FRANK GARFIELD DANIELS, . . . . .	Nanticoke.
GILBERT MASON DEATS, Φ Κ Ψ, . . . . .	Pittstown, N. J.
JAMES G. DURHAM, . . . . .	Watsonstown.
CHARLES HODGE EALY, . . . . .	Schellsburg.
RACHEL EDNA EDDLEMAN, Π Β Φ, . . . . .	Greensburg, Ind.
ROGER SAUNDERS EDWARDS, Σ Χ, . . . . .	Lewisburg.
JOHN HENRY EISENHAUER, JR., . . . . .	Kelly Point.

RALPH ELLIOT, . . . . .	Tower City.
INEZ BELLE FIKE, Π Β Φ, . . . . .	Dundaff.
MARY ALLISON FOWLER, Π Β Φ, . . . . .	Olean, N. Y.
WALTER SCOTT GEARHART, . . . . .	Curwensville.
ELWOOD F. GILBERT, Σ Α Ε, . . . . .	Montoursville.
EDWIN PATTERSON GRIFFITHS, Φ Γ Δ, . . . . .	Pittsburg.
MARGARET GROFF, Π Φ, . . . . .	Lewisburg.
VELOLA E. HALL, . . . . .	Sharon.
JULIUS ROBERT HAYES, . . . . .	Montoursville.
JOHN EDWARD HEIDENREICH, Σ Α Ε, . . . . .	Mahanoy City.
JOHN HENRY HOELZEL, . . . . .	Salem, N. J.
JOHN ERB HUNSBERGER, . . . . .	Ephrata.
CLARENCE MILLER HURSH, . . . . .	Mifflinburg.
JOHN C. JOHNSON, Σ Α Ε, . . . . .	Red Top.
ALBERT GEORGE KARGE, . . . . .	Camden, N. J.
ROYAL IVAN KNAPP, . . . . .	Lake Pleasant.
GRACE BELLE LESHER, . . . . .	Northumberland.
LENA RUTH LESHER, . . . . .	Northumberland.
JOHN LEVERING LIVEZEY, . . . . .	Philadelphia.
MAURICE CALDWELL MCGIFFIN, Κ Σ, . . . . .	Brookville.
WILLIAM MUENCH MARTZ, . . . . .	Crowl.
HERBERT LEE MILLIGAN, Κ Σ, . . . . .	Bradford.
EBENEZER EDWARD MORRIS, . . . . .	Mahanoy City.
CHAS. R. MYERS, . . . . .	Lewisburg.
HAROLD PERRINE, Σ Α Ε, . . . . .	Lewisburg.
ELIZABETH EVA REED, . . . . .	Lewisburg.
CHESTER BENJAMIN RENN, . . . . .	Unityville.

LOUIS WILLIAM ROBAY, . . . . .	Baltimore, Md.
DAVID WALLACE ROBINSON, . . . . .	Moorsburg.
IRA SANKEY SHEPPARD, $\Phi \Gamma \Delta$ , . . . . .	Newport, N. J.
OLIVE SCHILLINGER, . . . . .	Martin's Ferry, O.
WILLIAM HARLEY SLIFER, . . . . .	Lewisburg.
JOHN HENRY STAHL, . . . . .	Milton.
ALIF STEPHENS, . . . . .	Lewisburg.
RUTH STEPHENS, . . . . .	Lewisburg.
DEAN MARVIN SETTON, . . . . .	Union City.
CHARLES MILTON TEUFEL, $\Phi \Gamma \Delta$ , . . . . .	Milton.
ROBERT WILLIAM THOMPSON, . . . . .	Irwin.
LLOYD WEBSTER, . . . . .	East New Market, Md.
BENJAMIN FRANKLIN WHITE, JR., $\Phi \Kappa \Psi$ , . . . . .	Bradford.
CHARLES GABRIEL WHITEHEAD, $\Sigma X$ , . . . . .	Williamsport.
LEWIS HENRY WIEGEL, $\Kappa \Sigma$ , . . . . .	Irwin.
WALTER SAMUEL WILCOX, $\Sigma A E$ , . . . . .	Canton.
BESSIE ALVINA WILLIAMS, . . . . .	Lansford.
CLYDE DALE WOLF, . . . . .	Lewisburg.



# Freshman.

---

## Officers.

---

<i>President</i> , . . . . .	CHARLES H. TAYLOR.
<i>Vice-President</i> , . . . . .	PAUL G. SMITH.
<i>Secretary</i> , . . . . .	NELLIE GODDARD.
<i>Treasurer</i> , . . . . .	FERNE BRADDOCK.
<i>Historian</i> , . . . . .	FERNE BRADDOCK.
<i>Poet</i> , . . . . .	FLORENCE REED.

COLORS—Cherry and White.

FLOWER—Lily of the Valley,

## Freshman Class History.

---



It has been a very short time since the Class of 1905 has entered the classic halls of old Bucknell; still, it is with the greatest pride that we endeavor to record its early and brilliant history.

In all its achievements the Class of 1905 has been successful, and has certainly shown that it intends to benefit its Alma Mater.

How the hearts of over a hundred poor Freshmen did beat when, for the first time, they obtained their admission cards! How much more when they attended their first classes! But, as day by day passed, their timidity disappeared and was replaced by courage. Then gradually they made themselves felt throughout the whole college.

Scarcely had they entered than the Sophomores, with wonderful cunning, swept down upon them. Yet they were not at all embarrassed, but gallantly carried off the laurels in that memorable scrap of September 21, 1901. However, the Sophomores did not yet seem to be sufficiently suppressed, and so were further quieted by the Freshmen posters, which advertised them appropriately.

About this time the whole University became aroused by the natural brightness of the Freshmen. Individually they rivalled one another and gained respect for the whole class.

Then the foot ball season arrived, and some of the Class of 1905 so distinguished themselves in practice that it was finally decided the 'Varsity would not be complete without them. After this Freshman affairs moved on as usual until the basket ball team was organized. Here, again, they displayed their athletic prowess by having three men on the 'Varsity. But this was not all; the class team was organized, and the record speaks for itself.

Having acquired such a name in both foot ball and basket ball, how could any one be surprised at the excellent work done in base ball?

The Winter term came and with it the thoughts of the Freshmen Banquet. The class, always eager to excel all others, made great preparations and astonished all by the successful function held January 6, 1902.

So, having made such a record in this, their Freshman year, may not the Class of 1905 confidently expect a much more glorious history in the three remaining years of their college course?

HISTORIAN.

---

## Freshman Poem.

---

We love her, we love her, and who shall dare  
To chide us for loving our class so fair?  
So dear to the heart of each maiden and youth,  
She loyally stands for Wisdom and Truth.

What though the ladder toucheth the ground,  
And we are yet on the most lowly round,  
We'll nobly endeavor and never shall stop  
Until, all triumphant, we stand at the top.

As onward and upward we're trying to go,  
Let us lend helping hands to those struggling below.  
"Not for self, but for others 'tis noble to strive"  
Let us keep in remembrance, dear Nineteen Five.

We love her, we love her, our class so fair,  
And gladly the Cherry and White we wear.  
Together we'll sing: "May she long live and thrive,  
This, our glorious Class of Nineteen Five."

POET.

## Freshman Class.

---

ANNA MERTIE ALEXANDER, . . . . .	Marietta.
FRANK ELLSWORTH AMMON, . . . . .	Strode's Mill.
JOHN CALVIN ANDERSON, . . . . .	Butler.
JEREMIAH STAMEY AUSERMAN, . . . . .	Duffield.
WILLIAM ANDREW BARTOL, . . . . .	Lewisburg.
PAUL CARNAHAN BARTON, . . . . .	Allegheny.
EMORY OLIVER BICKEL, . . . . .	Milton.
JOSEPH S. BITTENBENDER, . . . . .	Nanticoke.
ROBERT ALEXANDER BLACKWOOD, . . . . .	Scranton.
ROY GRIER BOSTWICK, . . . . .	Du Bois.
RAY PRESTON BOWEN, . . . . .	Wellsboro.
MARY ISABEL BOWER, . . . . .	Lewisburg.
FERNE FRICK BRADDOCK, . . . . .	Mt. Pleasant.
GEORGE DEWITT BUHL, . . . . .	Marienville.
LAVERDA ADELIA BURGART, . . . . .	Altoona
EDWARD MILTON CAMPBELL, . . . . .	Butler.
MAUD MABEL CAPWELL, . . . . .	Scranton.
ALBERT MILLER CARRINGER, . . . . .	Marienville.
GEORGE W. CHEESMAN, . . . . .	Gloucester City, N. J.
HELEN ISABEL OVERHOLT CLARK, . . . . .	Mt. Pleasant.
GEORGE W. COCKILL, . . . . .	Glen Carbon.
HARRY ALLEN CORYELL, . . . . .	Shamokin Dam.
FRANCIS WILLARD COWELL, . . . . .	West Seneca, N. Y.



WILLIAM HARRY COX, JR., . . . . .	New Castle.
JOSEPHINE ADELIA CRATER, . . . . .	Narcissa.
ZACCHEUS DANIEL, . . . . .	Hawthorn.
GEORGE CRESWELL DAVIS, . . . . .	Milton.
BEATRICE DEARING, . . . . .	Wattsburg.
WILLIAM LUTHER DENTLER, . . . . .	Watsontown.
JAMES EDWARD ELLIOT, . . . . .	New Castle.
DOMINGO EVIA, . . . . .	Merida, Mexico.
SAMUEL EUGENE FLACK, . . . . .	Lairdsville.
JOHN HENRY FLOOD, . . . . .	Bridgeton, N. J.
CLARENCE LYNN FRY, . . . . .	Harrisburg.
EDMUND ROY GARDNER, . . . . .	McKeesport.
SAMUEL GEMBERLING, . . . . .	New Columbia.
WILLIAM WELLWOOD GILL, . . . . .	Wilkinsburg.
WILLIAM S. GILMORE, . . . . .	Montgomery.
NELLIE MAY GODDARD, . . . . .	Lewisburg.
LYNN SUMNER GOODMAN, . . . . .	Loganton.
MOUNTFORD JAMES GREENE, . . . . .	Smethport.
WILLIAM AMOS WARREN GRIER, . . . . .	Salem, N. J.
RALPH FLETCHER GRIFFITHS, . . . . .	Pittsburg.
JOHN CHARLES GROFF, . . . . .	Lewisburg.
LEVI MORRILL HAINER, . . . . .	Norristown.
WYMAN LEONARD HALL, . . . . .	Elizabeth.
ROY HANNA, . . . . .	Bradford.
NORMAN ELWOOD HENRY, . . . . .	Williamsport.
PHARES GROSS HESS, . . . . .	Manheim.
RALPH JACOB HESS, . . . . .	Williamsport.

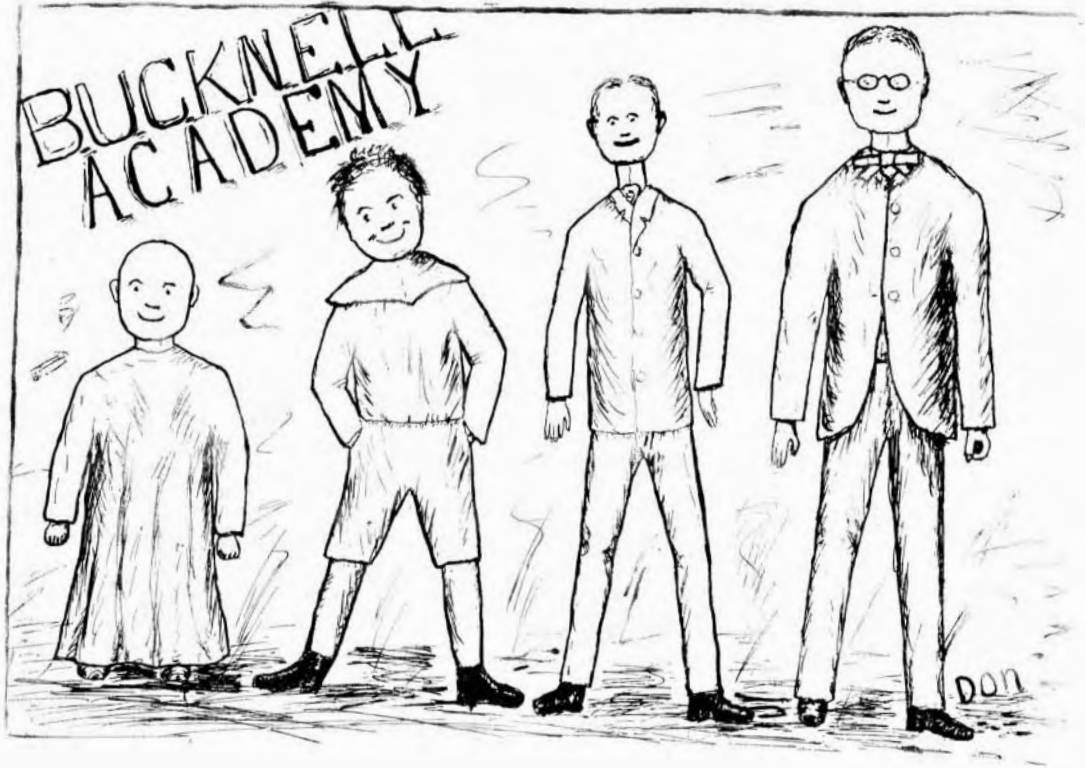
JAMES A. HUGHES, . . . . .	Mount Carmel.
LEWIS COLUMBUS HYLBERT, . . . . .	Clarksburg, W. Va.
ERSKINE JARRET, . . . . .	Montgomery.
NELLIE ESTELLA JOHNSON, . . . . .	Mount Carmel.
HERBERT LEROY JONES, . . . . .	Carnegie.
ROBERT ODILLON KLOTZ, . . . . .	Lansford.
HARROLD VONEIDA LESHNER, . . . . .	Northumberland.
DONALD ROCKEFELLER MCCAIN, . . . . .	Philadelphia.
FRANCIS LEROY MCCAULEY, . . . . .	Horseheads, N. Y.
JESSIE MCFARLAND, . . . . .	Watsonstown.
GEORGE RUPERT MCMINN, . . . . .	Burlington, Ia.
JOSEPH FREDERIC McMURRAY, . . . . .	Burlingame.
ROBERT BRUCE MACKEY, . . . . .	Waverly.
JAMES COOPER MADDEN, JR., . . . . .	Jeannette.
CHARLES STEPHEN MARSH, . . . . .	New Bethlehem.
GLENN LAVERNE MARSH, . . . . .	Jackson.
EARL AUSTIN MORTON, . . . . .	Dravosburg.
HELENA MOE OLDS, . . . . .	Elmhurst.
INEZ EDNA OLDS, . . . . .	Elmhurst.
CLARENCE IRA PHILIPS, . . . . .	Turbotville.
A. J. PEARSE, . . . . .	Erie.
CLARENCE EUGENE PROUT, . . . . .	Wiconisco.
MILTON HAYDEN PARRY PROUT, . . . . .	Wiconisco.
PUNDERSON AVERY RAINEY, . . . . .	Tunkhannock.
LEE RUSSELL RANCK, . . . . .	Lewisburg.
FLORENCE EMILY REED, . . . . .	Williamsport.
TEXIE ELEANOR REEDER, . . . . .	Edinboro.

HARRY WILBUR REMER, . . . . .	Lewisburg.
WALTER LEE RIGGS, . . . . .	McKeesport.
ROBERTS DALE ROYER, . . . . .	Huntingdon.
CHARLES HENRY SCHEICK, . . . . .	Uniontown.
BLAINE WALTER SCOTT, . . . . .	Monongahela.
DEFOREST ARMSTRONG SCOVILLE, . . . . .	Coudersport.
SAMUEL MAJOR SEIBERT, . . . . .	Coudersport.
CHARLES SHAW, . . . . .	Tivoli.
ISAAC SHEPPARD SHEPPARD, . . . . .	Newport, N. J.
ROBERT FRANCIS SHEPPARD, . . . . .	Cedarville, N. J.
PAUL GARFIELD SMITH, . . . . .	Harrisburg.
PEARL LOIS SMITH, . . . . .	Erie.
WENDALL RICHMOND SMITH, . . . . .	Factoryville.
CLARK SNYDER, . . . . .	Bloomsburg.
ANTHONY STEINHILFER, . . . . .	Warrensville.
EVA BLANCHE STONER, . . . . .	Alverton.
JAMES STRIMPLE, JR., . . . . .	Pedrickstown, N. J.
JAMES TAGGART, . . . . .	Frackville.
CHARLES HOWARD TAYLOR, . . . . .	Irwin.
NELLIE THOMAS, . . . . .	Philipsburg.
NORMAN MATTOON THOMAS, . . . . .	Lewisburg.
HARROLD EDWARD TIFFANY, . . . . .	Lewisburg.
ALBERT OGDEN VORSE, . . . . .	Lewisburg.
LOUIS JOSEPH FREDERICK WELCH, . . . . .	Eldred.
GEORGE LIDY WHITAKER, . . . . .	Curwensville.
CLIFFORD VERNON WILLIAMSON, . . . . .	Salladasburg.
THOMAS WOOD, . . . . .	Muncy.

WALTER ZIMMERMAN, . . . . . Shamokin.

### Special Students.

ESTELLA MAY ALBRIGHT, . . . . . Mifflinburg.  
HARRY BUBB BIBBY, K Σ, . . . . . Milton.  
RAYMOND SWISHER CARPENTER, . . . . . Lewisburg.  
OSCAR PROTHEROE DAVIES, . . . . . Scranton.  
CHARLES RANDOLPH GALBRATH, JR., Φ K Ψ, . . . . . Franklin.  
WILLIAM CARPENTER KELLY, . . . . . Lewisburg.  
EDWARD FRANKLIN LEINBACH, . . . . . Reading.  
THOMAS JAMES McCABE, . . . . . Mahanoy City.  
HARRY EDWARD McCORMICK, Φ Γ Δ, . . . . . Philadelphia.  
WILLIAM JAMES McMAHON, Δ T Δ, . . . . . Pittsburg.  
WILLIAM GRAY MURDOCK, Σ A E, . . . . . Milton.  
WILLIAM ROBERTS, . . . . . Frackville.  
CARLTON G. SHELDON, . . . . . Springboro.  
JAY WARREN SHELLY, . . . . . Port Royal.  
CLARA JANE SLIFER, . . . . . Lewisburg.  
JOHN BEISEL SMILEY, . . . . . Titusville.  
WILSON WILLARD STAVER, . . . . . Williamsport.  
EDGAR TAFT STEVENSON, . . . . . Franklin.  
WILLIAM STRIMPLE, . . . . . Pedrickstown, N. J.  
RALPH JAY WEISS, . . . . . Williamsport.



## Officers of Fourth Form.

---

<i>President</i> , . . . . .	WM. C. WESCOTT.
<i>Vice-President</i> , . . . . .	HARRY C. MUNRO.
<i>Secretary</i> , . . . . .	JOHN R. MCKNIGHT.
<i>Treasurer</i> , . . . . .	A. PIERCE WALTZ.
<i>Historian</i> , . . . . .	A. LOOMIS TAYLOR.

COLORS—Crimson and Steel.

## Senior Academy History.

---



E desire to correct a false impression which is of long standing and deep root. A foul slander is abroad in the land. So widely spread and powerful has become this conspiracy that we can only liken it to St. George's Dragon. It has for so many years been the accepted belief that the students of the Academy are not only for the greater part of their time engaged in learning the alphabet, but also that the Academy students are totally unable to engage in any formal sports or recreation.

If one would believe the false report which has been circulated he would conclude that, in the Academy, foot ball is totally unknown, basket ball one of the lost arts, and base ball less known than Greek is known in college. The very ancientness of the hoary and ragged belief has led many persons of otherwise sound judgment and intelligence to allow it to pass for true; but we wish to publish to all the world that age does not prove wisdom.

Like St. George of old, the present fourth form class goes forth to slay the dragon.

Our Academy athletics in the past year have been very successful. Foot ball games, played far and near, while not always resulting in victories, have demonstrated the fact that we both know the game and are not afraid to play it.

In basket ball we have repeatedly shown our opponents that we are in the game from start to finish.

Our debate last year with Bloomsburg has proved that the Academy is also possessed of literary ability. We need not mention the oratory which may be heard every week in our society halls. The Prep also holds within its walls a "Walking" and a "Chess Club."

Our manifold achievements predict certain destruction to next year's Sophomore Class.

A. L. TAYLOR.

# Academy Students.

## Fourth Form.

### Classical.

AMOS ETHAN BARTON, . . . . .	Vilas.
WILLIAM THOMAS COVERDALE, . . . . .	Lewisburg.
JOHN WALLACE GREEN, . . . . .	Norristown.
JOSEPH C. MACRO, . . . . .	Reynoldsville.
HENRY TAYLOR MEYER, . . . . .	Rebersburg.
THOMAS CREVELING RIEMENSNYDER, . . . . .	Milton.
EDWIN WARREN RUMSEY, . . . . .	Wellsboro.
JAMES LEIGH SHIELDS, . . . . .	Lewisburg.
A. PIERCE WALTZ, . . . . .	Elmsport.

### Latin Scientific.

HENRY CLAY MUNRO, . . . . .	White Hall.
JOHN JENKINS OWENS, . . . . .	Scranton.
CHARLES NAPOLEON BROSIUS, . . . . .	Mt. Pleasant Mills.
JOHN CUNNINGHAM, . . . . .	Wilkes-Barre.



ROSSELL JOHN ROTHROCK, . . . . .	Mt. Pleasant Mills.
DONALD BARE SPANOGLE, . . . . .	Lewistown.
WILLIAM CLYDE WESTCOTT, . . . . .	Union City.

### Third Form.

#### Classical.

FREDERICK RUSSELL BOWER, . . . . .	Lewisburg.
JAMES R. C. ELLIOTT, . . . . .	Philadelphia.
WILLIAM PORTER GEMMILL, . . . . .	Allenwood.
HARVARD GRIFFITH, . . . . .	Wayne.
FRANK PAUL LANGHORNE, . . . . .	Philadelphia.
EDWIN WILDE SAYLOR, . . . . .	Philadelphia.
REINHOLD FERDINAND STOLTZ, . . . . .	Philadelphia.
JOHN HOWARD STOVER, . . . . .	Altoona.

#### Latin Scientific.

ADIE KYLE BELL, . . . . .	Sabbath Rest.
ARTHUR EVRIL MCNINCH, . . . . .	Lewisburg.
JONATHAN WOLFE, . . . . .	Lewisburg.
ERNEST SABIN BURROWS, . . . . .	Picture Rocks.
MURRAY ALVIN COLLINS, . . . . .	Picture Rocks.
LLOYD FRANK HARSHBERGER, . . . . .	New Albany.
IRA KORN LITTLE, . . . . .	Pittsburg.
HARRY LINCOLN MOHN, . . . . .	Vilas.

EDWIN LEROY ROYER, . . . . . Rebersburg.  
 ROBERT JACOBI SIMINGTON, . . . . . Mooresburg.  
 HARRY LOWRY TOMB, . . . . . Wilkinsburg.  
 ANDREW DEWITT VANDLING, . . . . . Northumberland.

### Second Form.

STEPHEN DUNCAN, . . . . . Lewisburg.  
 JAMES ANDREWS GROFF, . . . . . Lewisburg.  
 CLYDE HENRY HAINES, . . . . . Winfield.  
 HARROLD BURROWS HENDERSON, . . . . . Montgomery.  
 JOSEPH WELLS HENDERSON, . . . . . Montgomery.  
 ARTHUR JONES, . . . . . Williamstown.  
 VICTOR ALLEN MCHENRY, . . . . . Cambra.  
 CHARLES HENRY O'NEILL, . . . . . Philadelphia.  
 ALBERT WAFFLE OWENS, . . . . . Lewisburg.  
 PRESTON METTLER SAVIDGE, . . . . . Sunbury.  
 RALPH LLEWELLYN THOMAS, . . . . . Lewisburg.  
 HOWARD IRVING WILLIAMS, . . . . . Susquehanna.  
 JOHN J. WILLIAMS, . . . . . Mt. Carmel.  
 CHARLEMAGNE TOWER WOLFE, . . . . . Lewisburg.

### First Form.

ROBERT BURNS CAMPBELL, . . . . . Kane.  
 ROBERT EDGECOMB, . . . . . Galetton.

HERMAN HENRY KLERX, . . . . .	Sunbury.
ROY W. M. KUHN, . . . . .	Mt. Pleasant.
ALVIN ULYSSES LEONARD, . . . . .	Austinville.

---

### Students Pursuing Select Studies.

ALBERT DANIEL BARTON, . . . . .	Philadelphia.
CHARLES RODMAN BARTON, . . . . .	Philadelphia.
SAMUEL JAMES BLACK, . . . . .	Franklin.
JOHN BLOOD, JR., . . . . .	Lewisburg.
HARRY F. DOUGLASS, . . . . .	Bradford.
ANDREW CURTIS FEINOUR, . . . . .	Milton.
NORMAN BUCKLAND GARDNER, . . . . .	Sunbury.
JOHN GILLIS, . . . . .	Nanticoke.
CHARLES M. GRIMINGER, . . . . .	Altoona.
EDWIN WINGERT GUNDY, . . . . .	Lewisburg.
GEORGE BAILEY HARRIS, . . . . .	Lewisburg.
SPENSER TILLINGHAST HARRIS, . . . . .	Lewisburg.
JOHN FRANK HENNESSEY, . . . . .	Irwin.
HARRY ISAIAH HESS, . . . . .	Nanticoke.
JAMES L. KEISER, . . . . .	West Milton.
HOWARD EUGENE KRAUSE, . . . . .	Williamsport.
JOHN ROY MCKNIGHT, . . . . .	Sabbath Rest.
CARL EUGENE PATCHIN, . . . . .	Patchinville.
ERASTUS HILL PETTIBONE, . . . . .	Dorranceton.
JAMES REES, . . . . .	Nanticoke.

SIMON CLEMSON REICHARD, . . . . .	Wilkes-Barre.
RUSSEL LEIGHTON SANDERS, . . . . .	Dry Valley X-Roads.
RICARDO SEGRERA, . . . . .	Santiago de Cuba.
WILLIAM SHIPP, . . . . .	Shamokin.
A. LOOMIS TAYLOR, . . . . .	Irwin.
ROWLAND ARTHUR THAYER, . . . . .	Erie.
FRED. WILLIAM VEIL, . . . . .	Williamsport.
GEORGE ALBERT WIEGEL, . . . . .	Irwin.



# THE SEM



## Senior Officers.

---

<i>President,</i> . . . . .	MARJORIE CHURCH.
<i>Vice-President,</i> . . . . .	EVA GINTER.
<i>Treasurer,</i> . . . . .	BESS STEPHENS.
<i>Historian,</i> . . . . .	RUTH SHORKLEY.
<i>Poet,</i> . . . . .	EDITH KELLY.

COLORS—Scarlet and White.

FLOWER—Red Carnation.

## Senior Seminary History.

---



OURTEEN girl graduates! Surely worthy of a written history!

We, the Class of 1902, have risen quietly but successfully to our present position. Quietly, because our parents and instructors deemed it best, and successfully, because we have made it so.

Our marked reserve was broken near the close of our fourth year, when our friends were entertained by the presence of a vision—a vision of fair, white-robed maidens, Grecian in manners and dress, but at heart and in their interests true “Bucknell Girls.”

This, our first public appearance, being past, we entered upon our Senior year, fearing what psychology, ethics and history of art might do to trouble us. But we have fought bravely through them all, and are the better prepared to meet the greater things of the future.

The social function of our Senior year will be the annual reception, which we hope will fully measure up to the class standard, for we want it to be a success to the fullest extent.

But this is only the opening chapter of the history of our class. May time unfold the full account of our lives in harmony with its introduction!

HISTORIAN.

## Senior Seminary Poem,

Would you ask us why we love  
This, our class, so tenderly,  
Holding her so far above  
All who would her rival be?  
Is she brave, victorious?  
Can she deeds of valor do?  
We would answer: Glorious  
Is our Class of Nineteen-Two!

Maidens, boasts she—clever, bright,  
Some athletic, classical,  
Some whose faces 'tis delight  
But to feast your eyes withal.  
Girls with thought on study stayed,  
Girls short, jolly, gay and true.  
These, and more, the fame have made,  
For our Class of Nineteen-Two,

All too soon will come the day  
When these classmates true must part.  
Each will go her separate way  
With a loyal, steadfast heart,  
That will ever hold most dear,  
'Till life's setting sun we view,  
Memories sweet and ever dear—  
Memories of Nineteen-Two.

SENIOR SEMINARY POET.



# Seminary Students.

## Graduate Students.

MARY FLORENCE HIGGINS, . . . . .	Lewisburg.
MARIE LOUISE LEISER, . . . . .	Lewisburg.
LAVINIA BESSIE MAGEE, . . . . .	Clarion.

## The Senior Class.

GRACE MARGARET BRUBAKER, . . . . .	Elk Horn, W. Va.
MARJORIE ELLEN CHURCH, . . . . .	Union City.
MARGARET FORGEUS, . . . . .	Huntingdon.
EVA IRENE GINTER, . . . . .	Lewisburg.
MARIAN ELIZABETH GINTER, . . . . .	Lewisburg.
EDITH HEDGES KELLY, . . . . .	Lewisburg.
RACHEL MAY KUNKLE, . . . . .	Bucknell.
ELIZABETH BRITON MEEK, . . . . .	Allenwood.
JULIA ELLA MURPHY, . . . . .	Lewisburg.
EMMA ALDER NESBIT, . . . . .	Lewisburg.
SARAH ELLIS NESBIT, . . . . .	Lewisburg.
RUTH AMELIA SHORKLEY, . . . . .	Lewisburg.
MARY BESS STEPHENSON, . . . . .	Mahaffey.

## The Fourth Year Class.

COTTIE GUDILA ALBRIGHT, . . . . .	Lewisburg.
-----------------------------------	------------

MARY ISABEL CAMPBELL, . . . . .	Kane.
THEODORA MAY CAMPBELL, . . . . .	Lewisburg.
HELEN SIDNEY HOUGHTON, . . . . .	Lewisburg.
LOUISA MATTIS, . . . . .	Lewisburg.
SARAH ALDER MITMAN, . . . . .	Lewisburg.
MARY ELIZABETH SEAMAN, . . . . .	Allentown.

### The Third Year Class.

IRENE EMMA BARTON, . . . . .	Torresdale.
CATHERINE ELIZABETH BOWMAN, . . . . .	Anacostia, D. C.
JOSEPHINE BROWN, . . . . .	Allenwood.
HELEN IRENE COOKE, . . . . .	Denver, Col.
RUTH HAMMITT, . . . . .	Philadelphia.
NINA PLIAN, . . . . .	Bangkok, Siam.
EDITH SARAH MCNINCH, . . . . .	Lewisburg.
ELSIE BUTLER STEELE PAYNE, . . . . .	Philadelphia.
CARRIE BELLE ROOS, . . . . .	Lewisburg.
MAUD JOHANNA SCHUBERT, . . . . .	Bradford.
BRENDA LYMAN SIMONS, . . . . .	Philadelphia.
MARY GEORGIANA STANTON, . . . . .	Chinchilla.
SARAH FOSTER STEANS, . . . . .	Mifflinburg.

### The Second Year Class.

HARRIET LUCY BALLENTINE, . . . . .	Reidsburg.
ARABELLA O'NEILL, . . . . .	Philadelphia.
ELSIE OWENS, . . . . .	Lewisburg.

MARY STEIN, . . . . .	Lewisburg.
MARY FOULKROD UNRUH, . . . . .	Fox Chase.
DOROTHY WALLS, . . . . .	Lewisburg.
CHRISTINA HENRY WILLIAMS, . . . . .	Ansonville.
JEANETTE KEEN WOLFE, . . . . .	Lewisburg.

### The First Year Class.

LUCILE MARIE COOKE, . . . . .	Denver, Col.
FRANCES LLOYD GROFF, . . . . .	Lewisburg.

### Pursuing Select Studies.

LULU MARGARET BIDDLE, . . . . .	Lewisburg.
CLARE MAY BIDLESPACHER, . . . . .	Trout Run.
ANNA ELIZABETH BIEBER, . . . . .	Montandon.
LOLA EVELYN BURCHINAL, . . . . .	Uniontown.
ANNA MARGARET CAMPBELL, . . . . .	Kane.
CLARA LORENA CASSELL, . . . . .	Hummelstown.
FLORENCE CORNELIUS, . . . . .	Sunbury.
LILLIAN ELIZABETH DAVIS, . . . . .	Mt. Carmel.
MAYME DAVIS, . . . . .	Knoxville, Tenn.
GERTRUDE MARGUERITE FIKE, . . . . .	Dundaff.
HAZEL BEATRICE FIKE, . . . . .	Dundaff.
BETTIE CATHERINE FLORIN, . . . . .	Johnsonburg.
MAUD MAY GREGG, . . . . .	Sunbury.
ESTHER BELLE GODCHARLE, . . . . .	Milton.

EDITH GERHART, . . . . .	Lewisburg.
MARY HEISER, . . . . .	Lewisburg.
LULU HEINTZELMAN, . . . . .	Penn's Station.
MARY BELLE HOOVER, . . . . .	Mt. Carmel.
MARGARET STELLA JONES, . . . . .	Hazelwood.
BERTHA MAUD KENYON, . . . . .	Carbondale.
EDNA LOEB, . . . . .	Sunbury.
HELEN LEONARD, . . . . .	Montgomery.
ESTHER LENORE LYDIC, . . . . .	Mahaffey.
EMMA ROLETTA McCLURE, . . . . .	McKeesport.
MARIAN McINTYRE, . . . . .	Lewisburg.
HELEN MAYER, . . . . .	Philadelphia.
JESSIE MAY NIXON, . . . . .	Uniontown.
ESTIE MARIAN OCKER, . . . . .	Lewisburg.
FLOSSIE PETHTEL, . . . . .	New Freeport.
ANNA PINES, . . . . .	Lewisburg.
MARY POETH, . . . . .	Lewisburg.
ANNA RINGLER, . . . . .	Montgomery.
CHARLOTTE EDITH SCHWING, . . . . .	Warren.
KATHERINE LOY SECREST, . . . . .	Johnsonburg.
MARION LANE SEYMOUR, . . . . .	Philadelphia.
ARTELISSA STEELE, . . . . .	Milton.
MELLIE ARMSTRONG WESTCOTT, . . . . .	Camden, N. J.
LUCY WOLFE, . . . . .	Montandon.

# FRATERNITIES



# Phi Kappa Psi.

FOUNDED AT JEFFERSON COLLEGE IN 1852.

## Pennsylvania Gamma Chapter.

FOUNDED AT BUCKNELL IN 1855.

COLORS—Pink and Lavender.

### Fratres in Facultate.

W. G. OWENS, A. M.

W. C. BARTOL, PH. D.

EDWARD BELL, A. B. (Academy).

### Members.

1902.

CALVIN H. ELLIOTT,  
RAYMOND GREENE,  
JOHN B. PACKER,  
FRANK W. STANTON.

1903.

WALTER BERTOLETTE,  
LYNN D. SWEET.

1904.

BENJAMIN FRANKLIN WHITE, JR.,  
GILBERT M. DEATS,  
EDGAR T. STEVENSON,  
CHARLES RANDOLPH GALBRAITH, JR.

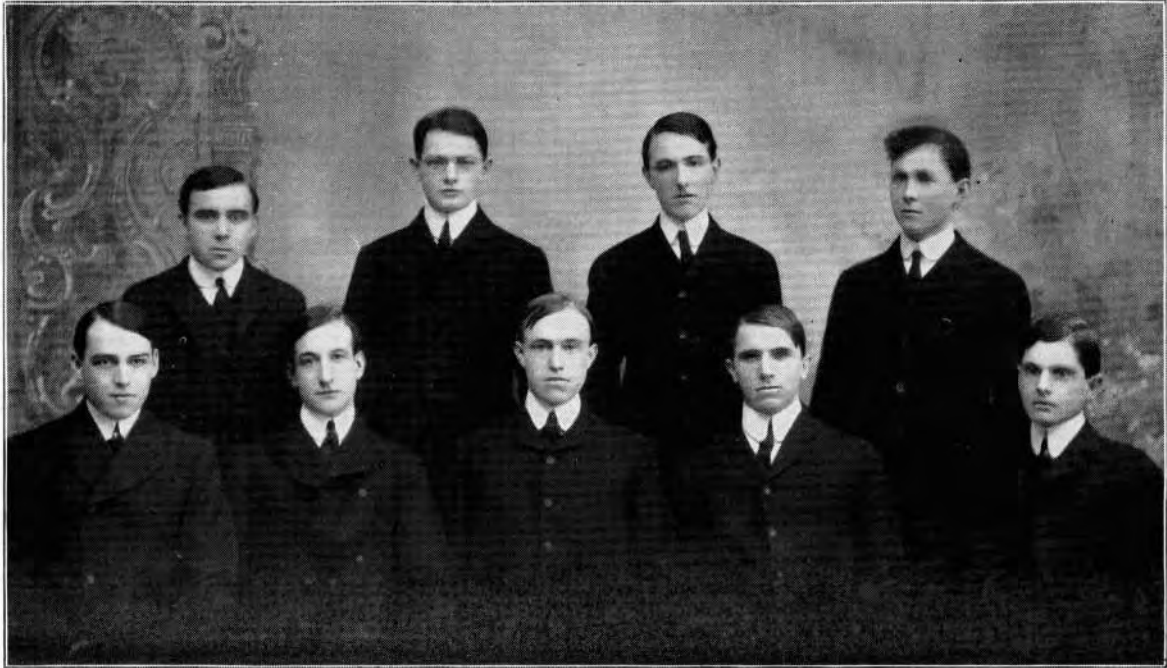
### Fratres in Urbe.

H. GRANT DREISBACH,  
WM. H. DREISBACH,  
WM. C. GRETZINGER,  
JAMES HALFPENNY,

HON. ALFRED HAVES,  
A. A. LEISER, ESQ.,  
A. A. LEISER, JR.,  
WM. LEISER, M. D.,  
D. BRIGHT MILLER,

J. C. NESBIT,  
W. L. NESBIT,  
HON. S. H. ORWIG,  
THORNTON M. SHORKLEY.

. . So . .



# Phi Kappa Psi.

## Active Chapter Roll.

### *District I.*

Washington and Jefferson.  
Allegheny College.  
Bucknell University.

Gettysburg College.  
Dickinson College.  
Franklin and Marshall.

Lafayette College.  
University of Pennsylvania.  
Swarthmore College.

### *District II.*

Dartmouth College.  
Cornell University.

Columbia University.  
Amherst College.  
Syracuse University.

Colgate University.  
Brook Polytechnic Institute.

### *District III.*

Washington and Lee University.  
John Hopkins University.

University of Virginia.

University of West Virginia.  
University of Mississippi.

### *District IV.*

Ohio Wesleyan University.  
University of Ohio.  
De Pauw University.

Northwestern University.  
Wittenberg College.  
University of Indiana.

Wabash College.  
University of Chicago.  
University of Michigan.

### *District V.*

University of Wisconsin.  
University of Minnesota.  
University of Kansas.

Stanford University.  
Beloit College.

University of Iowa.  
University of Nebraska.  
University of California.



# Sigma Chi.

## Active Chapter Roll.

Miami University.  
The Ohio Wesleyan University.  
Washington and Lee University.  
University of Mississippi.  
Bucknell University.  
Denison University.  
Dickinson College.  
Roanoke College.  
Hanover College.  
The Northwestern University.  
The University of California.  
The University of Nebraska.  
Mass. Institute of Technology.  
The Illinois Wesleyan University.  
The University of Texas.  
Albion College.  
The University of Minnesota.

The University of N. Carolina.  
The University of S. Carolina.  
Leland Stanford, Jr., University.  
Purdue University.  
The University of Cincinnati.  
The University of Michigan.  
Kentucky State College.  
Columbia University.  
The University of Pennsylvania.  
University of Wooster.  
Columbian University.  
Hampden-Sidney College.  
Pennsylvania College.  
Indiana University.  
De Pauw University.  
Butler College.  
Lafayette College.  
The University of Virginia.

Hobart College.  
Ohio State University.  
Beloit College.  
Tulane University.  
The University of Wisconsin.  
The University of Kansas.  
Lehigh University.  
Cornell University.  
Pennsylvania State College.  
Vanderbilt University.  
Randolph-Macon College.  
Centre College.  
Dartmouth College.  
The University of Illinois.  
West Virginia University.  
The University of Chicago.  
The University of the State of Mo.

# Sigma Chi.

FOUNDED AT MIAMI UNIVERSITY IN 1855.

## Kappa Chapter.

COLORS—Blue and Gold.

FLOWER—White Rose.

### Members.

1902.

YANCER M. WEIDENSAUL.

1903.

WM. N. MARSH,  
JAMES V. FRAMPTON,  
E. SLIFER WALLS.

1904.

ROGER S. EDWARDS,  
CHARLES G. WHITEHEAD.

### Fratres in Facultate.

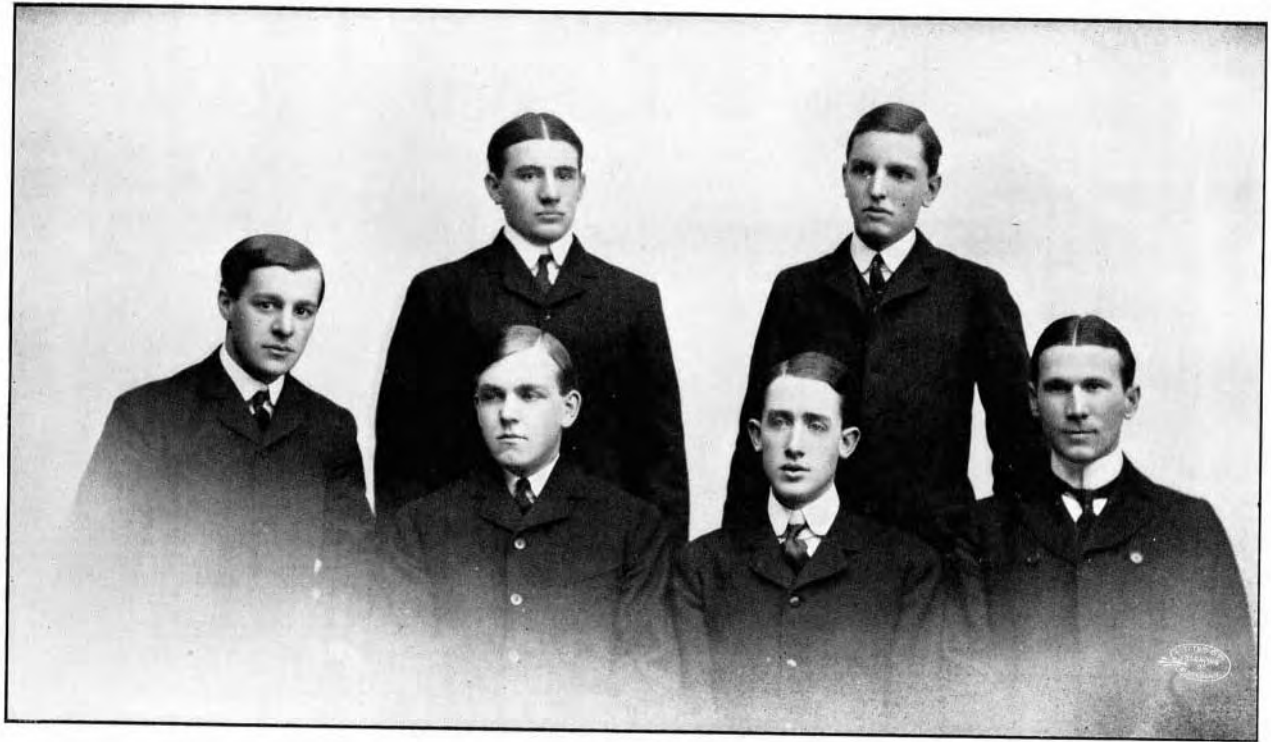
HON. HAROLD M. McCLURE.

### Fratres in Urbe.

HON. J. THOMPSON BAKER,  
WILLIAM C. WALLS,  
WILLIARD O. SHAFFER,  
D. P. HIGGINS,  
JOHN T. HYATT,  
JOHN H. WINGERT,

WM. C. GINTER,  
ALFRED S. SHELLAR,  
WILLIAM R. FOLLMER,  
HON. J. C. BUCHER,  
P. W. HIMMELRICH,  
HON. JOHN F. DUNCAN,

CHARLES J. WOLFE,  
PHILIP B. WOLFE,  
HARRY R. THORNTON,  
ABBOT G. BUCHER,  
FRANK J. STOUGHTON,  
ROBERT M. DARLINGTON.



# Phi Gamma Delta.

FOUNDED AT WASHINGTON AND JEFFERSON COLLEGE, 1848.

## Delta Chapter.

ESTABLISHED AT BUCKNELL, 1882.

COLOR—Royal Purple.

FLOWER—Heliotrope.

### Fratres in Facultate.

LINCOLN HULLEY, PH. D.  
G. C. L. REIMER, A. M.

E. M. HEIM, PH. D.  
THOMAS J. MORRIS, A. B.

### Members.

#### 1902.

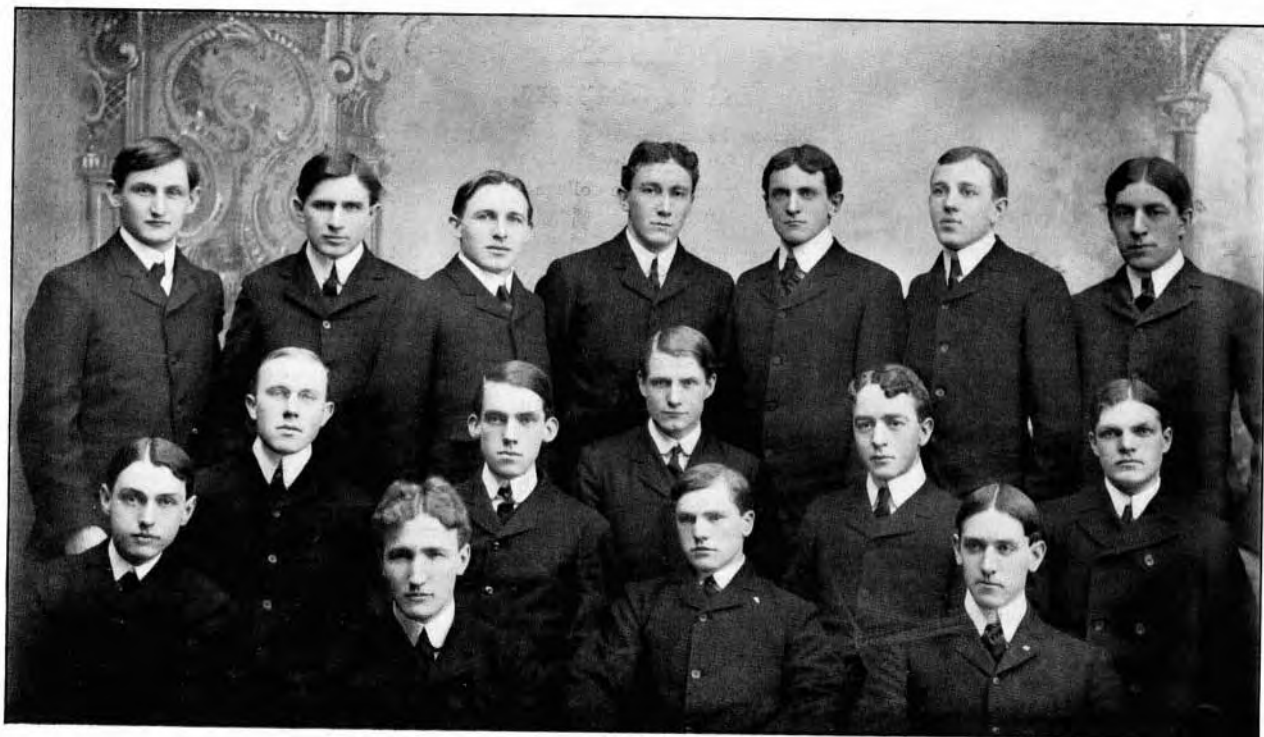
J. SANFORD DAVIS,  
LEWIS E. THEIS,  
EDWARD BURROWS,  
OLIN S. V. MARTS,  
GEORGE W. ENGLISH,  
CHARLES E. GOODALL,

#### 1903.

REESE H. HARRIS,  
J. FREDERICK SIGEL,  
MERLE M. EDWARDS,  
CARL W. TIFFANY,  
J. LLOYD KALP,  
JOHN J. BRANDT.

#### 1904.

HALDY M. CHRIST,  
EDWIN P. GRIFFITHS,  
IRA S. SHEPPARD,  
CHARLES M. TEUFEL.



# Phi Gamma Delta.

## Active Chapters.

### *Section I.*

University of Maine.  
Mass. Institute of Technology.  
Worcester Polytechnic Institute.

### *Section II.*

Dartmouth College.  
Amherst College.  
Trinity College.  
Yale University.

### *Section III.*

New York University.  
Columbia University.  
College of the City of New York.

### *Section IV.*

Colgate University.  
Cornell University.  
Union College.  
Syracuse University.

### *Section V.*

University of Pennsylvania.  
Lafayette College.  
Lehigh University.

### *Section VI.*

Bucknell University.  
Pennsylvania State College.  
Gettysburg.

### *Section VII.*

Johns Hopkins.  
University of Virginia.  
Roanoke College.  
Hampden-Sidney College.  
Washington and Lee University.  
Richmond University.

### *Section VIII.*

Allegheny College.  
Washington and Jefferson.  
Wittenberg College.  
Ohio Wesleyan University.  
Denison University.  
Ohio State University.  
Wooster University.

### *Section IX.*

Indiana University.  
De Pauw University.

Hanover College.  
Wabash University.

### *Section X.*

University of Tennessee.  
Bethel College.  
University of Alabama.  
University of Texas.

### *Section XI.*

Illinois Wesleyan.  
Knox University.  
University of Illinois.  
University of Wisconsin.  
University of Minnesota.

### *Section XII.*

University of Kansas.  
William Jewell College.  
University of Nebraska.  
University of Missouri.

### *Section XIII.*

University of Washington.  
University of California.

# Sigma Alpha Epsilon.

## Active Chapter Roll.

### *Province Alpha.*

University of Maine.  
Boston University.  
Mass. Institute of Technology.  
Harvard University.  
Worcester Polytechnic Institute.

### *Province Beta.*

Cornell University.  
Columbia University.  
St. Stephen's College.  
Allegheny College.  
Dickinson College.  
Pennsylvania State College.  
Bucknell University.  
Gettysburg College.  
University of Pennsylvania.

### *Province Gamma.*

University of Virginia.  
Washington and Lee University.  
University of North Carolina.  
Davidson College.  
Wofford College.  
University of Georgia.  
Mercer University.  
Emory College.  
Georgia School of Technology.

### *Province Delta.*

University of Michigan.  
Adrian College.  
Mt. Union College.  
Ohio Wesleyan University.  
University of Cincinnati.  
Ohio State University.

### *Franklin College.*

Purdue University.  
Northwestern University.  
University of Illinois.

### *Province Epsilon.*

Central University.  
Bethel College.  
Kentucky State College.  
Southwestern Presbyterian Univ.  
Cumberland University.  
Vanderbilt University.  
University of Tennessee.  
University of the South.  
Southwestern Baptist University.  
University of Alabama.  
Southern University.  
Alabama Polytechnic Institute.

*Province Zeta.*

University of Missouri.  
Washington University.  
University of Nebraska.  
University of Arkansas.

*Province Eta.*

University of Colorado.  
Denver University.  
Leland Stanford, Jr., University.  
University of California.

*Province Theta.*

Louisiana State University.  
Tulane University.  
University of Mississippi.  
University of Texas.

**Alumni Associations.**

Boston.

New York.

Pittsburg.

Knoxville.

Washington, D. C.

Denver.

Atlanta.

Augusta.

Savannah.

Detroit.

Worcester.

Wilmington.

Greenville.

Alliance.

Cincinnati.

Chicago.

Cleveland.

St. Louis.

Louisville.

San Francisco.

Chattanooga.

Jackson.

Kansas City.

New Orleans.

Birmingham.

Macon.





# Sigma Alpha Epsilon.

FOUNDED AT UNIVERSITY OF ALABAMA IN 1856.

## Pennsylvania Zeta Chapter.

COLORS—Royal Purple and Old Gold.

FLOWER—Violet.

### Members.

1903.

O. J. MCNITT.  
SYLVESTER B. DUNLAP.

P. DEWEES BROWNING.  
RALPH L. BELFORD.  
GAIL CARRIER.  
ELWOOD F. GILBERT.  
JOHN ED. HEIDENREICH.

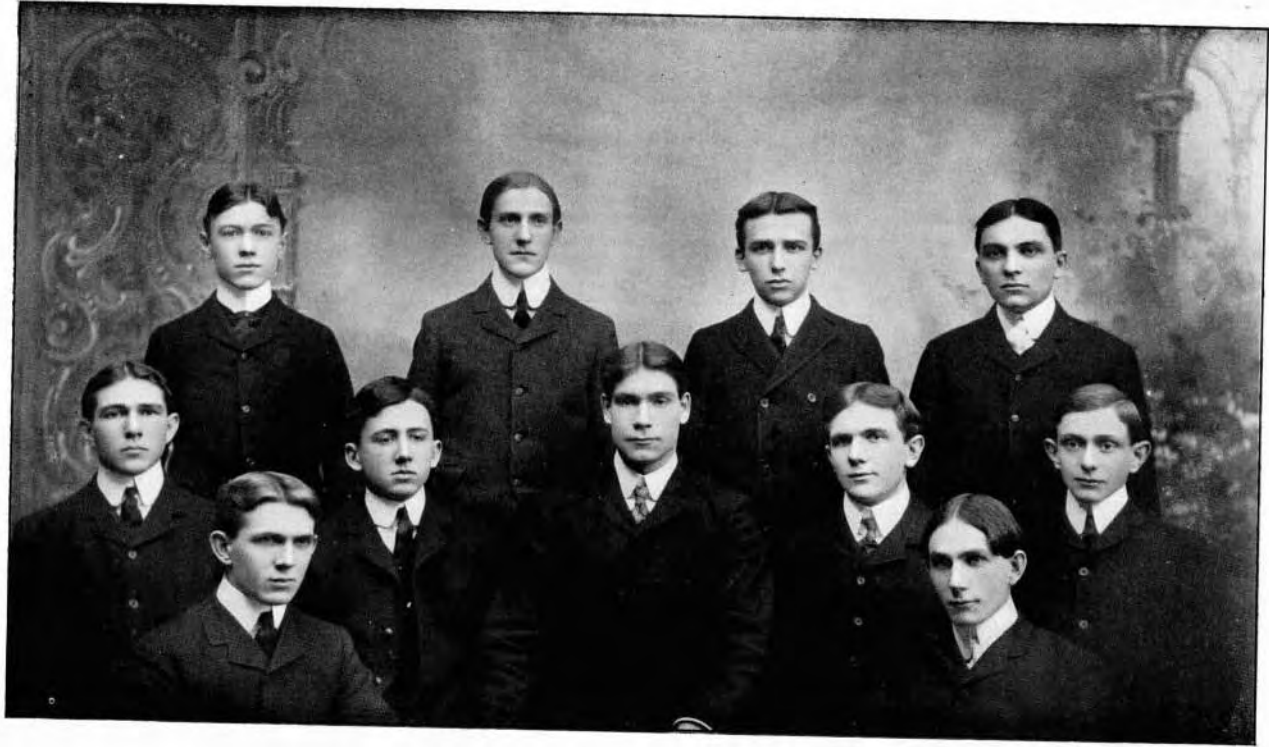
1904.

JOHN C. JOHNSON.  
HAROLD PERRINE.  
WALTER S. WILCOX.  
WILLIAM G. MURDOCK.

### Fratres in Urbe.

ROY T. BUTLER.  
L. T. FELZER.

A. GREGG LOOMIS.  
JAS. BROWN MARTIN.



# Πi Beta Πhi.

FOUNDED AT MONMOUTH COLLEGE, 1867.

## Pennsylvania Beta Chapter.

ESTABLISHED AT BUCKNELL, 1895.

COLORS—Wine and Silver Blue.

FLOWER—Carnation.

### Members.

#### 1902.

CARRIE HALFPENNY.  
HELEN BUOY.  
JEANETTE SHEPPARD.  
EDNA BACON.

#### 1903.

LILA LONG.  
JANE FOWLER.  
GRACE ROBERTS.  
ELVIE COLEMAN.

#### 1904.

BLANCHE BANE.  
MARY FOWLER.  
INEZ FIKE  
RACHEL EDDLEMAN.

### Sorors in Urbe.

MRS. ELOISE M. HULLEY.  
MRS. ELIZABETH HEIM.  
MARY BARTOL, PH. D.

MARY WILSON.  
KATE GODDARD.  
IZA MARTIN.

SARA BLACK.



# Phi Beta Phi.

## Active Chapter Roll.

### *Alpha Province.*

Middlebury College.  
University of Vermont.  
Columbian University.

Swarthmore College.  
Bucknell University.  
Ohio University.  
Ohio State University.

Syracuse University.  
Boston University.  
Woman's College of Baltimore.

### *Beta Province.*

Louvard University.  
Knox College.  
Northwestern University.

University of Illinois.  
Franklin College.  
University of Indiana.

University of Indianapolis.  
Hillsdale College.  
University of Michigan.

### *Gamma Province.*

University of Wisconsin.  
University of Missouri.

Iowa State University.

Iowa Wesleyan University.  
Simpson College.

### *Delta Province.*

University of Colorado.  
University of California.

Denver University.  
University of Nebraska.

Tulane University.  
Kansas University.

# Kappa Sigma.

## Active Chapter Roll.

Alabama Polytechnic Institute,  
Bowdoin College.  
Bucknell University.  
Columbian University.  
Cumberland University  
Georgia School of Technology.  
Kentucky University.  
Lehigh University.  
Louisiana State University.  
Millsaps College.  
Ohio State University.  
Purdue University.  
Richmond College.  
Southwestern Presbyterian Univ.  
Swarthmore College.  
Tulane University.  
University of Georgia.  
University of Illinois.  
University of Maine.

University of Nebraska.  
University of Pennsylvania.  
University of Tennessee.  
University of Vermont.  
University of Wisconsin.  
Wabash College.  
William Jewell College.  
Wofford College.  
Dickinson College.  
Bethel College.  
Brown University.  
Centenary College.  
Cornell University.  
Davidson College.  
Hampden-Sidney College.  
Lake Forest University.  
Leland Stanford, Jr., University.  
Mercer University.  
Missouri State University.  
Pennsylvania State College.

Randolph-Macon College.  
Southwestern Baptist University.  
Southwestern University.  
Trinity College.  
University of Alabama.  
University of Arkansas.  
University of Indiana.  
University of Maryland.  
University of North Carolina.  
University of the South.  
University of Texas.  
University of Virginia.  
Vanderbilt University.  
Washington and Jefferson College.  
William and Mary College.  
New Hampshire College.  
University of Denver.  
University of Minnesota.  
University of California.

**Alumni Associations.**

New York.

New Orleans.

Boston.

Reiston.

St. Louis.

Buffalo.

Philadelphia.

Chihuahua, Mex.

Yazoo City.

Pine Bluff.

Memphis.

San Francisco.

Pittsburg.

Indianapolis.

Chicago.



# Kappa Sigma.

FOUNDED AT UNIVERSITY OF VIRGINIA, 1867.

---

## Alpha Phi Chapter.

ESTABLISHED AT BUCKNELL, 1896.

COLORS—Maroon, Old Gold and Blue.

FLOWER—Lily of the Valley.

### Frater in Facultate.

HON. ALBERT W. JOHNSON.

### Members.

1902.

HENRY T. HARVEY.  
JOHN DAVIS.  
CHARLES A. WOODARD.  
LOUIS V. HOTTENSTEIN.

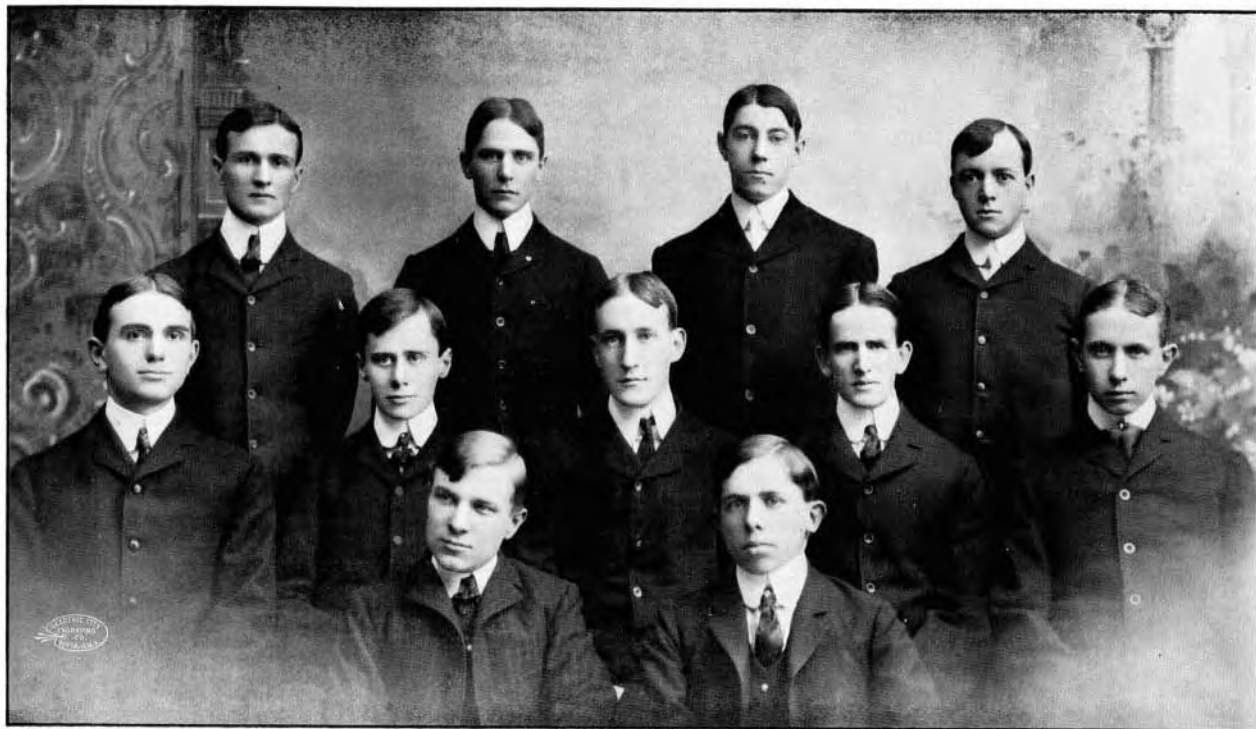
1903.

WALTER SENN.  
DAVID R. WALKINSHAW.

1904.

CARROLL CARUTHERS.  
LEWIS B. CUSTER.  
M. C. MCGIFFEN.  
HARRY B. BIBBY.  
HERBERT L. MILLIGAN.





# Theta Delta Tau.

SOPHOMORE FRATERNITY.

FOUNDED AT UNION COLLEGE, 1885.

COLORS—Green and White.

---

## Active Chapters.

Alpha Chapter, Union College.

Beta Chapter, University of Rochester.

Gamma Chapter, Hamilton College.

Delta Chapter, Bucknell University.

## Alumni Members.

WALTER L. HILL, EX. '98, Ψ Υ.

GEORGE T. RITTER, '98, X Φ.

ROBERT V. REX, '98, Σ A E.

ANDREW LEISER, JR., '98, Φ K Ψ.

ROY B. MULKIE, '98, Φ K Ψ.

ROBERT Y. GRANT, EX. '01, Σ X.

ROBERT J. POWELL, EX. '01, Φ Γ Δ.

ERNEST J. MAGEE, EX. '01, Σ X.

CLARENCE A. WEYMOUTH, '00, Φ K Ψ.

EMMONS L. PECK, '00, Φ Γ Δ.

# Theta Delta Tau.

## Delta Chapter.

ESTABLISHED 1895, A. D. 129 L. F.

### Active Members.

CHARLES E. GOODALL, '02,  $\Phi \Gamma \Delta$ .  
RAYMOND GREENE, '02,  $\Phi K \Psi$ .  
LEWIS E. THEIS, '02,  $\Phi \Gamma \Delta$ .  
JOHN B. PACKER, '02,  $\Phi K \Psi$ .  
J. SANFORD DAVIS, '02,  $\Phi \Gamma \Delta$ .  
WALTER BERTOLETTE, '03,  $\Phi K \Psi$ .

REESE H. HARRIS, '03,  $\Phi \Gamma \Delta$ .  
WALTER SENN, '03,  $K \Sigma$ .  
M. C. MCGIFFIN, '04,  $K \Sigma$ .  
EDGAR T. STEVENSON, '04,  $\Phi K \Psi$ .  
HERBERT L. MILLIGAN, '04,  $K \Sigma$ .  
EDWIN P. GRIFFITHS, '04,  $\Phi \Gamma \Delta$ .

ROGER S. EDWARDS, '04,  $\Sigma X$ .  
CHARLES G. WHITEHEAD, '04,  $\Sigma X$ .  
CHARLES R. GALBRAITH, JR., '04,  $\Phi K \Psi$ .  
IRA S. SHEPPARD, '04,  $\Phi \Gamma \Delta$ .

### Frater in Urbe.

ANDREW LEISER, JR.



# Beta Delta Pi Sorority.

ESTABLISHED SEPTEMBER 15, 1887.

COLORS—Nile Green and Pink.

---

## Alpha Chapter.

---

### Active Members.

LOY SECRIST.  
BESS STEPHENSON.  
LULU BIDDLE.

MARY HEISER.  
EDNA LOBE.  
NELLIE DUNKLE.

### Sorors in Urbe.

MRS. W. C. GRETZINGER.  
MISS NELLIE DUNKLE.  
MISS TOT MYERS.

MISS HELEN FOREST.  
MISS MARGARET STEIN.  
MISS ELIZABETH KREMER.

---

### Active Chapter Roll.

Bucknell Institute, Lewisburg, Pa.  
Miss Gordan's, Philadelphia, Pa.

St. Gabriel, Peekskill, N. Y.

Mme. Boligne, Chevy Chase, Md.  
Miss Low's, Stanford, Conn.



**BΔT**

# Πι Πι Sorority.

## Alpha Chapter.

ESTABLISHED OCTOBER 9, 1888.

COLORS—Lavender and White.

### Soror in Facultate.

MARY COXE.

### Members.

HANNAH GOODMAN.  
SARAH NESBIT.  
EMMA NESBIT.

MARGARET GROFF.  
ELSIE PAYNE.  
LAVINIA MAGEE.

MARJORIE CHURCH.  
HETTIE GODCHARLES.  
IRENE BARTON.

### Alumnæ Members.

#### FOUNDERS.

ALICE BUSH.  
HARRIET RICHTER.

EDITH McK. REBER.  
\*KATHERINE L. WOLFE.

### Sorors in Urbe.

MRS. PHILIP LINN.  
MARY M. WOLFE.  
MARTHA WOLFE.

ELIZABETH T. BATES.  
FRANCES M. BAKER.  
MARY MATLACK.

MIRIAM BUCHER.  
JENE D. HIMMELREICH.  
MARIE L. LEISER.

## Beta Chapter.

BOSTON CONSERVATORY OF MUSIC; ESTABLISHED JANUARY, 1900.

\* Deceased.





## Our Campus.

When Autumn winds are blowing,  
And birds begin to go,  
And squirrels think the time has come  
The nuts away to stow;  
When Nature weaves her pretty garb  
Of yellow, red and brown,  
And hickory nuts and acorns  
And leaves are falling down,  
There is a spot that charms me  
As if by magic spell,  
The sweetest place on earth to me  
Is the campus at Bucknell.

And when the winds of Winter  
Are blowing fierce and loud,  
And trees are bare, and snow-flakes  
Come forth from ivory cloud;  
When stately pines and spruces  
Majestically are gowned,

And bend their snow-crowned branches  
Far down to kiss the ground;  
There is a spot that charms me  
Whose beauty none can tell;  
The prettiest spot on earth to me  
Is the campus at Bucknell.

And when the buds are bursting,  
And leaves are peeping through,  
And the robins and the blue-birds  
Are chirping "How do you do?"  
And every one is happy,  
Endowed with courage new,  
And with eyes closed upon the past,  
With Nature starts anew;  
There is a spot enchanted  
That holds me by a spell.  
There is no spot on earth so dear  
As the campus at Bucknell.

## To The Susquehanna.

Ah, Susquehanna, slumb'ring in the sun  
With placid surface o'er thy hidden deep,  
What tales as yet untold couldst thou reveal?  
Tales o'er which careful Deans and Profs might weep!

How oft in days long (?) past beside thy stream,  
Dear river, lovers fond were wont to stray,  
While gallant lads with minds on science bent  
Have chanced to meet the bonnie co-eds gay.

Thy surface, placid stream, was oft disturbed  
By boatmen's skillful strokes, and moonlight's beam  
Has mirrored in thy shining surface fair  
A roguish face, a phantasy, a dream.

Flow on, oh river, then, with peaceful trend,  
Thy secrets hidden in thy sombre deep!  
No winds shall bear them to a listening world!  
They lie within thy silent heart asleep.



-Y-M-G-A-

-Jaekel-

# Y. M. C. A.

<i>President,</i> . . . . .	CHARLES F. EISENMENGER.
<i>Vice President,</i> . . . . .	HOWARD K. WILLIAMS.
<i>Recording Secretary,</i> . . . . .	R. FORDE BRESNAHAN.
<i>Corresponding Secretary,</i> . . . . .	LOUIS W. ROBEY.
<i>Treasurer,</i> . . . . .	MORTON R. SHELDON.

## Committees.

### Religious Meeting.

T. A. SHERBONDY, *Chairman.*  
M. F. FORBELL.  
L. W. ROBEY.  
A. G. KARGE.

### Bible Study.

PHILIP REILLY, *Chairman.*  
P. G. HESS.  
J. E. HUNSBERGER.  
D. M. SUTTON.

### Finance.

M. R. SHELDON, *Chairman.*  
W. S. WILCOX.  
C. A. WOODWARD.

### Northfield.

E. T. SHIELDS, *Chairman.*  
C. F. EISENMENGER.  
C. E. GOODALL.

### Missionary.

L. J. ULMER.  
R. F. BRESNAHAN.  
J. E. HUNSBERGER.

### Membership.

C. F. EISENMENGER.  
H. K. WILLIAMS.  
C. W. TIFFANY.  
L. W. ROBEY.

### Music.

R. H. WILLIAMS.  
D. W. ROBINSON.  
E. P. GRIFFITHS.

### Handbook.

GEO. W. ALEXANDER.  
R. G. PIERSON.  
A. S. BECHTEL.  
W. K. RHODES.

## Bucknell Chapter of the College Settlement Movement.

---

*President*, . . . . . MISS IDA LUCHSINGER.  
*Vice-President*, . . . . . MISS EDNA L. BACON.  
*Recording Secretary*, . . . . . MISS VELOLA HALL.  
*Corresponding Secretary*, . . . . . MISS KATHERINE L. SECRIST.  
*Treasurer*, . . . . . MISS EMMA R. EBLING.

---

### Academy D. M. C. A.

*President*, . . . . . E. W. TAYLOR.  
*Secretary*, . . . . . E. P. WALTZ.  
*Treasurer*, . . . . . J. C. MACRO.

# The Influence and Demands of the College

## Y. M. C. A.



VERY branch of work in college has its influence and demands. Many young men, when they enter college, have no particular liking for athletics in any form; but before they have completed their college course they have become fascinated by some particular department, or perhaps by all departments. This result has been brought about by the silent force of athletics; and the same thing may be said to be true of the various clubs and societies.

A similar influence is also at work in the Young Men's Christian Association. No individual can be active in this work, or merely attend its meetings, and be free from its influence. To hear the different members give their thoughts on a subject, or take part in some other way, impresses one. Often another opens a new world to us by telling how he overcame some sin, or what led him closer to his Master. The invisible power that accompanies the Association is superior to that of any other because its purpose is the highest.

Since we are social beings others will imbibe, to a greater or less degree, our spirit. Therefore, the influence one receives from the Association goes to others. Our fellow-students, who are not members of the Association, are raised to a higher plane. The influence goes still farther than this. Our other friends see the workings of this spiritual power and receive an incentive from us.

As the influence that we derive from the Association is so widespread and so elevating, has it not some claims upon us? Does it not demand that every student, especially the Christians, join it? It also requires that we arrange our work so that we can be present at its meetings and perform our part in them. The obligations upon us to be stanch Christians are as great when we are in college as they are at our respective homes. We cannot help in the work unless our words and actions correspond continually. It also claims some time each day for the study of our Bible lessons. If we do not study God's word how can we have a clear vision of the One who should be our model? We are in duty bound to be the highest type of men so that we shall not hinder but help in this work.

# Bible Classes.

## Juniors and Seniors.

SUBJECT—"Study of Old Testament Characters."

*Leader*—REV J. T. JUDD.

## Sophomores.

SUBJECT—"Studies in the Acts and Epistles."

*Leader*—PROF. W. G. OWENS.

## Freshmen.

SUBJECT—"Life of Christ."

*Leaders*—MR. WM. SHIELDS, PHILIP REILLY.

## Mission Study Classes.

FALL TERM—"Introduction to Study of Foreign Missions."

WINTER TERM—"Geography and Atlas of Protestant Missions."

### College.

L. J. ULMER.  
P. G. HAAS.  
R. F. BRESNAHAN.  
M. R. SHELDON.  
C. V. WILLIAMSON.  
CHARLES SHAW.  
L. W. ROBEY.

C. F. EISENMENGER.  
J. E. HUNSBERGER.  
J. E. MILLER.  
D. W. SUTTON.  
A. E. BARTON.  
J. C. MACRO.

### Institute.

MISS NELLIE GODDARD.  
MISS IDA E. LUCHSINGER.  
MISS CHARLOTTE E. SHIELDS  
MISS RUTH LESHER.  
MISS LILLIAN SHIELDS.  
MISS VELOLA E. HALL.  
MISS ALICE J. BUTLER.  
MISS FRANCES A. RACE.



LITERARY  
SOCIETIES

—Janice—



## Officers of Euepia, 1901='02.

	<i>Spring Term, '01.</i>	<i>Fall Term, '01.</i>	<i>Winter Term, '02.</i>
<i>President, . . . . .</i>	HAGUE, '01.	L. J. ULMER, '02	T. L. WILLIAMS, '02.
<i>Vice-President, . . . . .</i>	TERRELL, '03.	BARTHOLEMEW, '03.	MCGIFFEN, '04.
<i>Secretary, . . . . .</i>	ROBINSON, '04.	J. ROBERT HAYES, '04.	C. B. RENN, '04.
<i>Treasurer, . . . . .</i>	T. L. WILLIAMS, '02.	LIVEZEY, '04.	HVLBERT, '05.
<i>Critic, . . . . .</i>	S. B. DUNLAP, '03.	WILLIAMS, '02.	P. REILEY, '02.
<i>Sergeant-at-Arms, . . . . .</i>	CULE, '04.	D. W. ROBINSON, '04.	L. DANIEL, '05.

## Officers Theta Alpha.

	<i>Spring Term, 1901.</i>	<i>Fall Term, 1901.</i>	<i>Winter Term, 1902.</i>
<i>President, . . . . .</i>	J. W. McCracken.	E. P. Heckert.	J. W. Snyder.
<i>Vice-President, . . . . .</i>	M. R. Sheldon.	S. A. Hart.	F. K. Singiser.
<i>Secretary, . . . . .</i>	T. A. Sherbondy.	W. S. Wilcox.	C. H. Ealy.
<i>Treasurer, . . . . .</i>	R. E. Carringer.	R. W. Thompson.	A. F. Dershimer.
<i>Critic, . . . . .</i>	A. B. S. Bechtel.	J. Wilson Snyder.	M. L. Drum.
<i>Censor, . . . . .</i>	E. P. Heckert.	A. F. Dershimer.	M. R. Sheldon.
<i>Curator, . . . . .</i>	L. W. Robey.	J. W. McCracken.	C. G. Sheldon.

## Zeta Officers.

	<i>Spring Term, 1901.</i>	<i>Fall Term, 1901.</i>	<i>Winter Term, 1902.</i>
<i>President, . . . . .</i>	MISS PHILLIPS.	MISS BACON.	MISS HALFPENNY.
<i>Vice-President, . . . . .</i>	MISS RUNYAN.	MISS COLEMAN.	MISS EBLING.
<i>Secretary, . . . . .</i>	MISS LUCHSINGER.	MISS FIKE.	MISS LESHAR.
<i>Treasurer, . . . . .</i>	MISS BANE.	MISS JOHNSON.	MISS CAPWELL.

# Demosthenian Club.

ORGANIZED JANUARY 27, 1899.

MOTTO—"Speaking maketh a ready man."

COLOR—Amethyst.

## Officers.

*President*, . . . . . J. W. SNYDER.  
*Secretary*, . . . . . W. K. RHODES.

## Members.

JOHN W. McCRACKEN, '02.  
J. WILSON SNYDER, '02.  
WALTER K. RHODES, '03.

SYLVESTER B. DUNLAP, '03.  
A. M. WEAVER, '03.  
LEVI J. ULMER, '02.  
THOMAS E. CULE, '04.

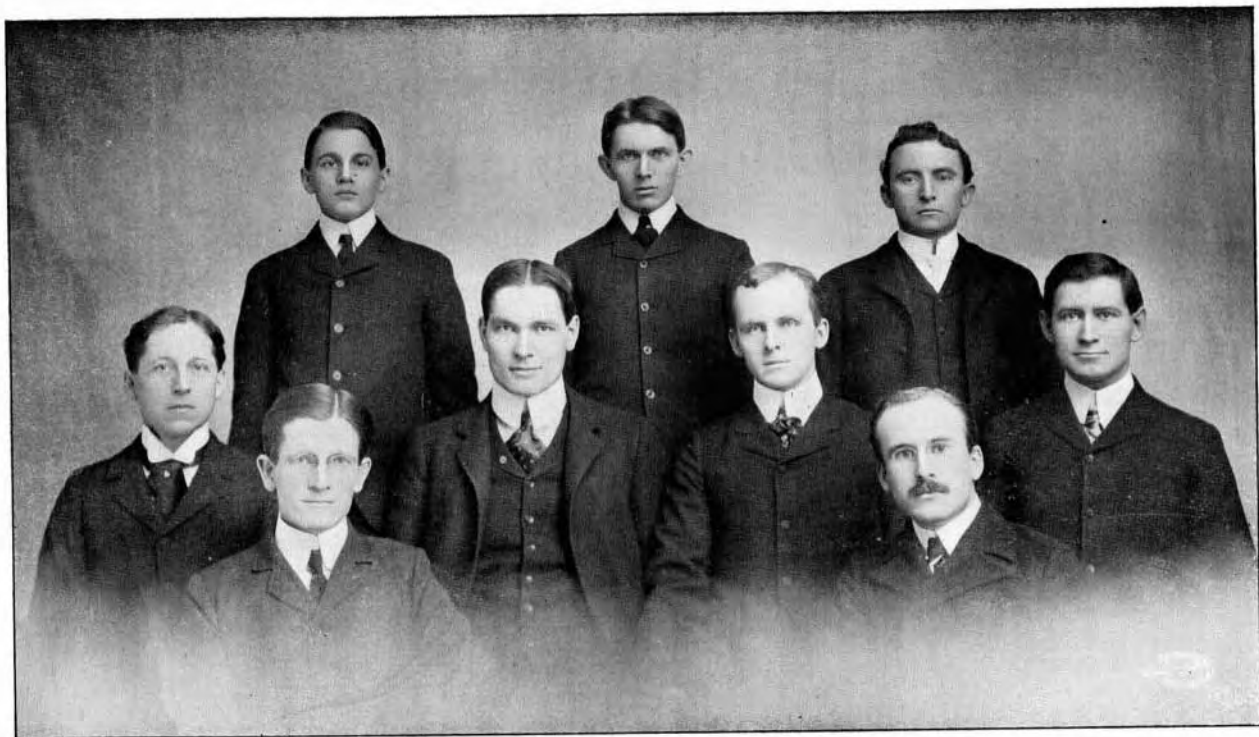
D. W. ROBINSON, '04.  
M. L. DRUM, '02.  
LOUIS V. ROBBERY, '04.

## Alumni Members.

C. F. SHIPMAN, '99.  
D. HOWARD ROBBINS, '99.  
A. K. DIEBLER, '99.  
EZRA LEHMAN, '99.  
G. A. GRIM, '00.

R. H. KRESS, '00.  
M. A. CARRINGER, '00.  
I. A. DEWITT, '00.  
EDWARD BELL, '00.

EUGENE C. SWITZER, '00.  
C. H. MILLER, '00.  
JOHN A. HAGUE, '01.  
C. F. BIDEISPACHER, '01.  
H. A. TRAX, '01.



# Alpha Sigma.

Extempore Lyceum of the Lyceum League of North America.

ESTABLISHED AT BUCKNELL, 1901.

MOTTO—" *Never unprepared.*"

## Members.

E. P. HECKERT.  
H. P. FRIEND.  
R. H. WILLIAMS.  
R. F. BRESNAHAN.  
R. J. TERRELL.  
J. E. HUNSBERGER.

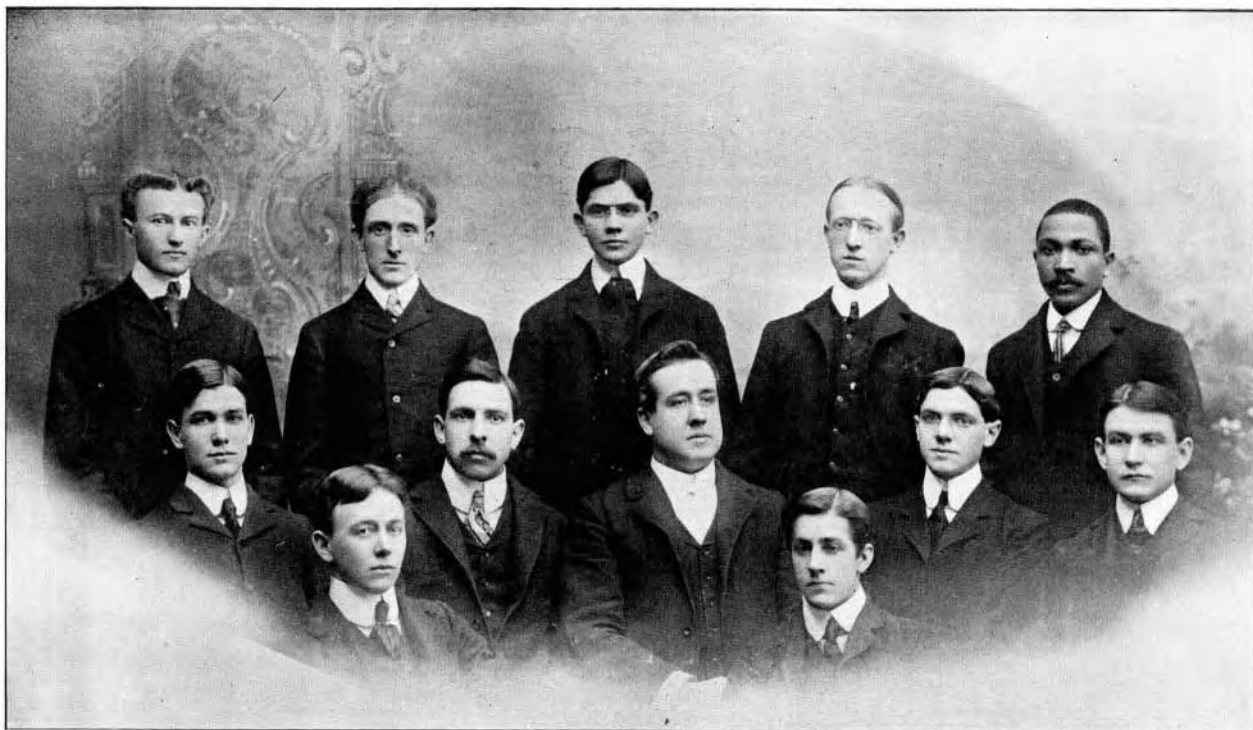
W. S. ROBINSON.  
H. K. WILLIAMS.  
F. K. SINGISER.  
M. R. SHELDON.  
A. G. KARGE.  
E. H. EALY.

M. C. MCGIFFIN.

## Alumni Members.

C. E. HANKEY, '01.

A. S. BECHTEL, '01.



# C. E. A.

ORGANIZED OCTOBER 6, 1900.

COLORS—Dark Blue and White.

FLOWER—Violet.

---

## Members.

BRENDA SIMMONS.  
SARA STEANS.  
ELSIE PAYNE.  
MARY LEAMAN.  
DOROTHY WALLS.  
EDITH KELLY.  
NINA PLIAN.

RUTH STEVENS.  
MARY UNRUH.  
JEANNETTE WOLFE.  
ARABELLA O'NEIL.  
MARY STANTON.  
KATHARINE BOWMAN.  
IRENE BARTON.

MARY BOWER.

## General Friends.

MRS. EDWARDS.  
MISS HANNA.

MISS STANTON.  
MISS EBLING.

MISS KNOX.



