

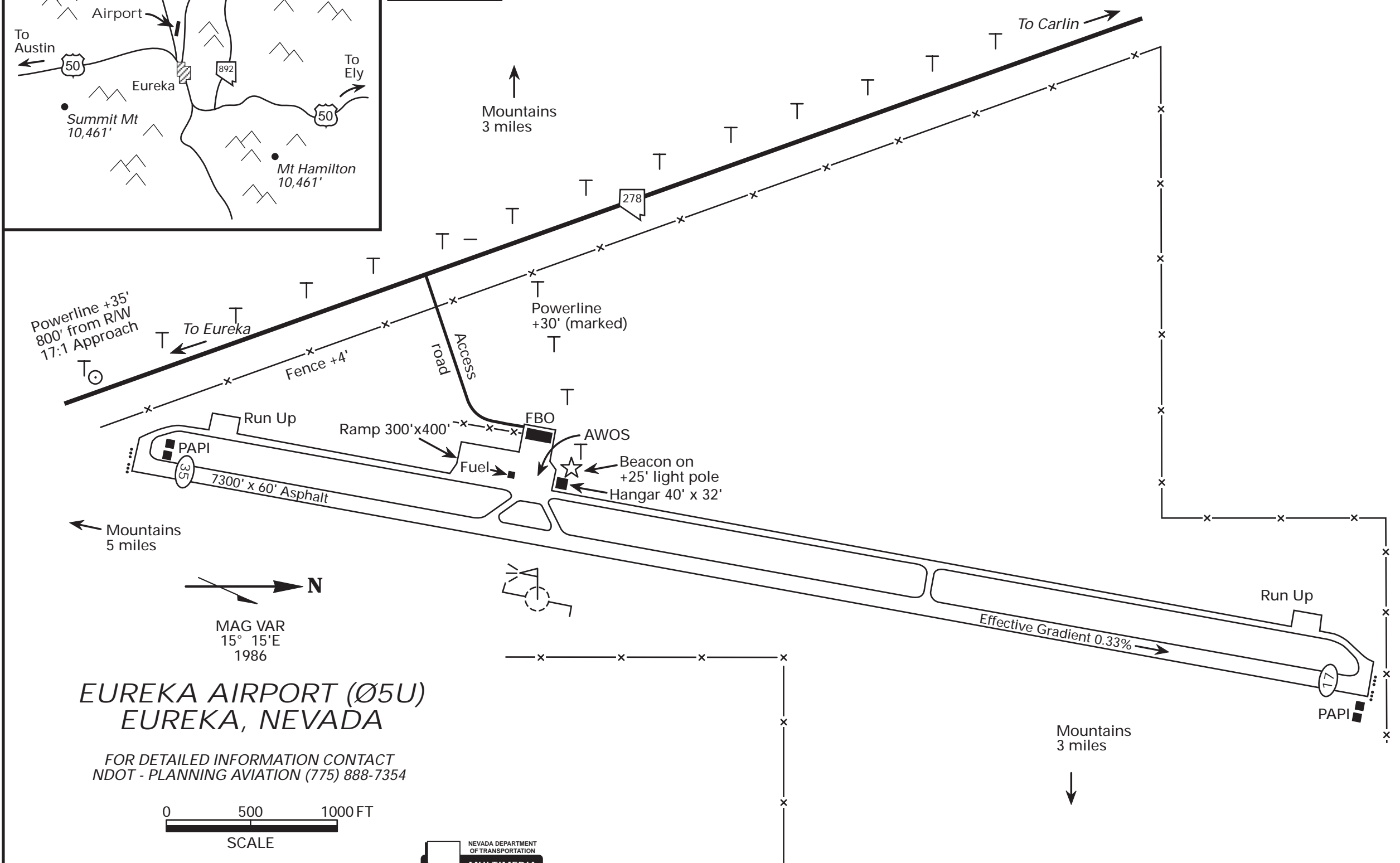
REMARKS: *Reflectors On Taxiway*

NOTE: *Not to Scale Distances and Heights are Approximate*

COORDINATES: 39° 36' 15" N (Est.)
116° 00' 15" W (Est.)

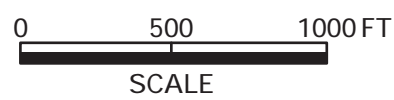
ACRES 800

ELEVATION 5,954'



EUREKA AIRPORT (Ø5U)
EUREKA, NEVADA

FOR DETAILED INFORMATION CONTACT
NDOT - PLANNING AVIATION (775) 888-7354



Revised January 2008 MF

