



Fitchburg Commuter Rail Line Improvement Project

Project Update

January, 2015



Program Definition/Goals

One Program/Multiple Projects:

\$172M Small Starts/Rt 62 Bridge (FTA/State)

\$ 10M CPF-43 Interlocking (ARRA)

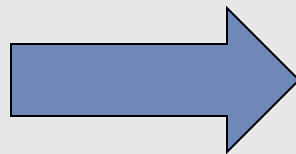
\$ 43M Double Tracking (ARRA/EOHED)

\$ 74M Wachusett Extension (TIGER/State)

\$ 7M N. Leominster Parking (FTA/State)

\$306M Investment

**Improve
Performance**



Increase Reliability/Access.
Decrease Travel Time
Extend Service



Program Construction Schedule

- **CPF-43**

Complete

- **Double Track**

Complete

- **Small Starts/Rt.62**

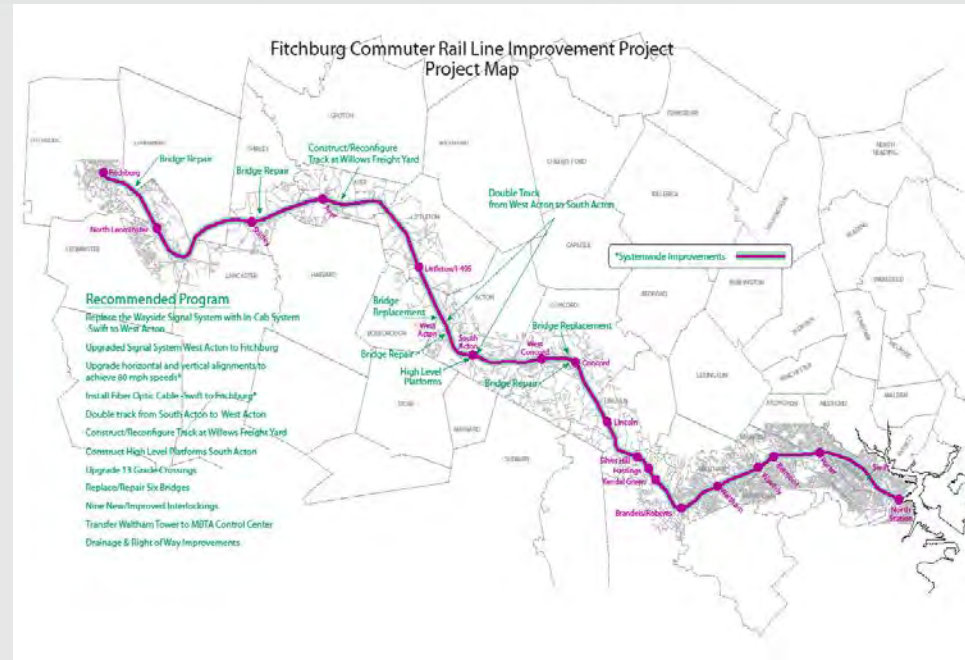
Jan 2012 – Dec 2015

- **N. Leominster Parking Garage**

Complete

- **Wachusett Extension**

Fall 2011 - 2016

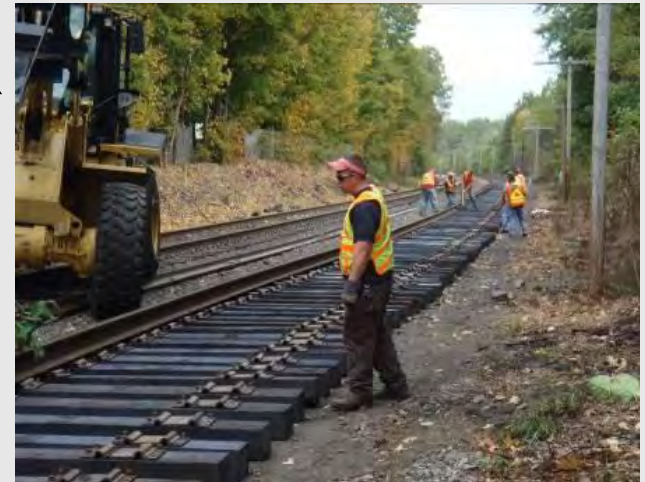




Double Track

8 Mi. of Double Track/New Littleton-495 Station

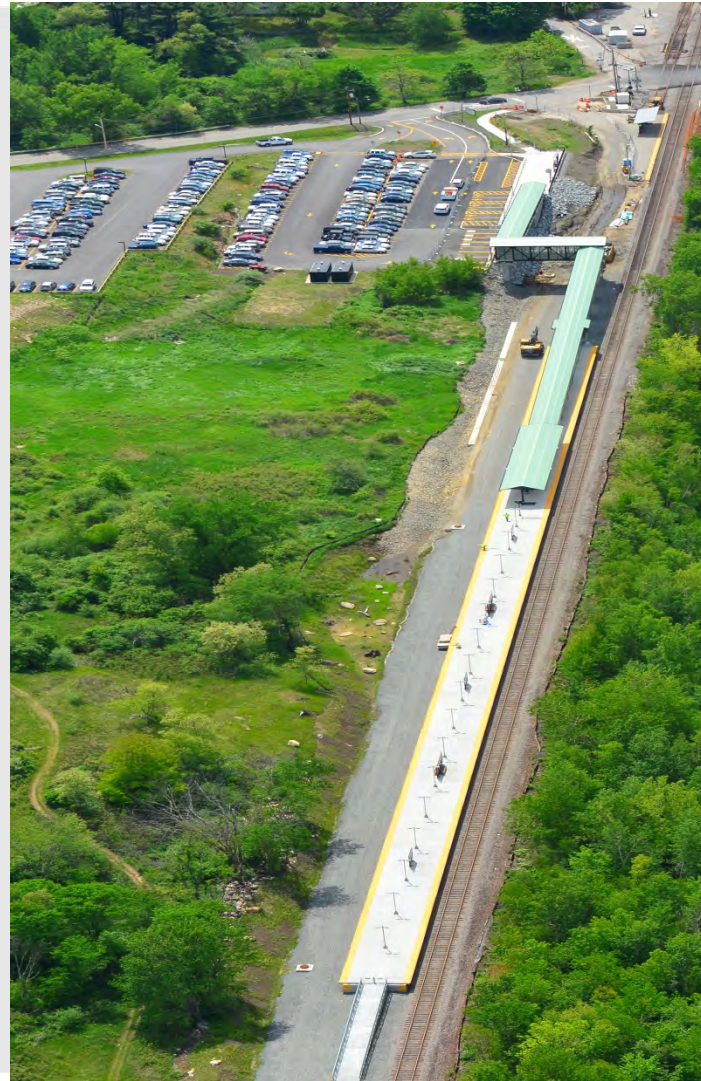
- Force Account Construction – MBCR
 - Track and Signal work complete
- Littleton Station Construction
 - Station and Parking complete





Double Track – Littleton Station

May 2013
Aerial Photo
(Courtesy of R.
Coughlin)





Small Starts Project

- New Signal System - Boston to Acton
- Upgrade track alignments to achieve 79 MPH
- 1 mi second track South Acton to West Acton
- Reconfigure track in Ayer freight area
- High level platforms at South Acton Station
- Upgrade 30 grade crossing warning systems
- Repair or replace seven (7) bridges
- Nine (9) new or modified interlockings
- Transfer Waltham Tower to MBTA Control Center

Small Starts Update

- Three Construction Packages
 - Track & Signal – started July 2013
 - Bridges – started Dec 2012
 - South Acton – started Dec 2012
- Project is on schedule
- Complete by Dec 31, 2015





South Acton Station





Station - Construction Status

- Foundations complete; platform panels installed
- Work delayed due to subcontractor issue
- Expect new high-level platforms to open in 2015



South Acton

Foundations for new headhouse & overpass





South Acton

New inbound platform and Headhouse Foundation





South Acton Platform Foundations





South Acton Inbound Platform





Bridges





Bridges - Construction Status

- Slope work complete at 2 locations
- Bridge repairs complete at 2 locations
- West Acton bridge complete
- Clematis Brook culvert complete
- Sudbury River bridge Phase 1 repairs complete
- Assabett River bridge Phase 1 underway
- Route 62 bridge Phase 1 work underway
- Route 62 bridge roll-in August 2015



West Acton Bridge





Baker's Brook Bridge





Sudbury River Bridge





Mill Pond Bridge





Route 62 Bridge





Track and Signal





Track/Signal - Constr. Status

- Track replaced at 8 grade crossings
- New Crossovers installed in Lincoln (CP-18) and Ayer/Devens (CP-37)
- Installation of new signal equipment underway
- New signal system Lincoln to Acton activated August 2014
- Freight improvements to reduce congestion in Ayer – new crossover installed and vertical clearance improved at East Main St bridge
- Second track installed in West Acton

Second Track in W. Acton



New crossover in Ayer



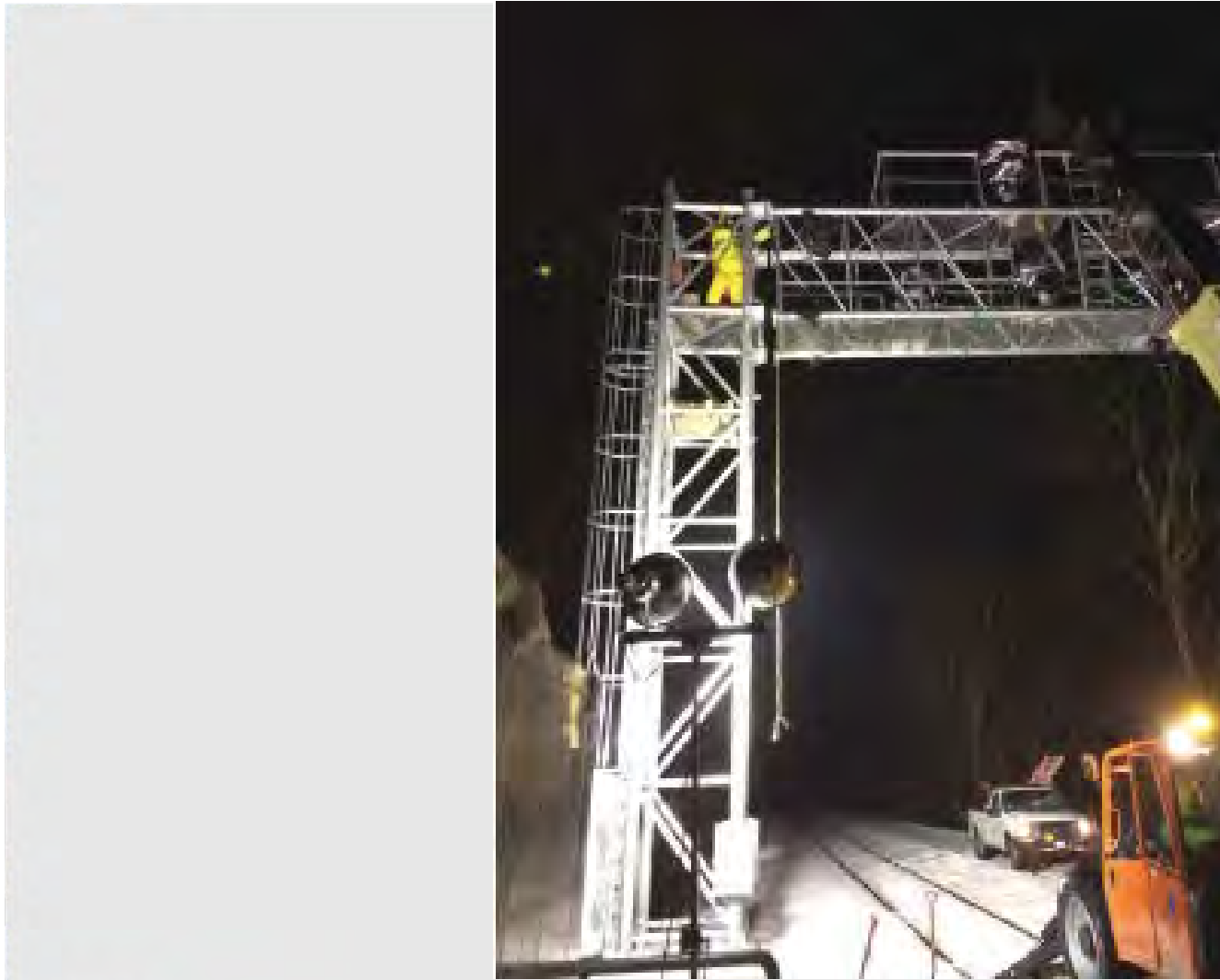


East Main St bridge Ayer – Lowering Track to improve freight clearance





Installing new Signal in Concord

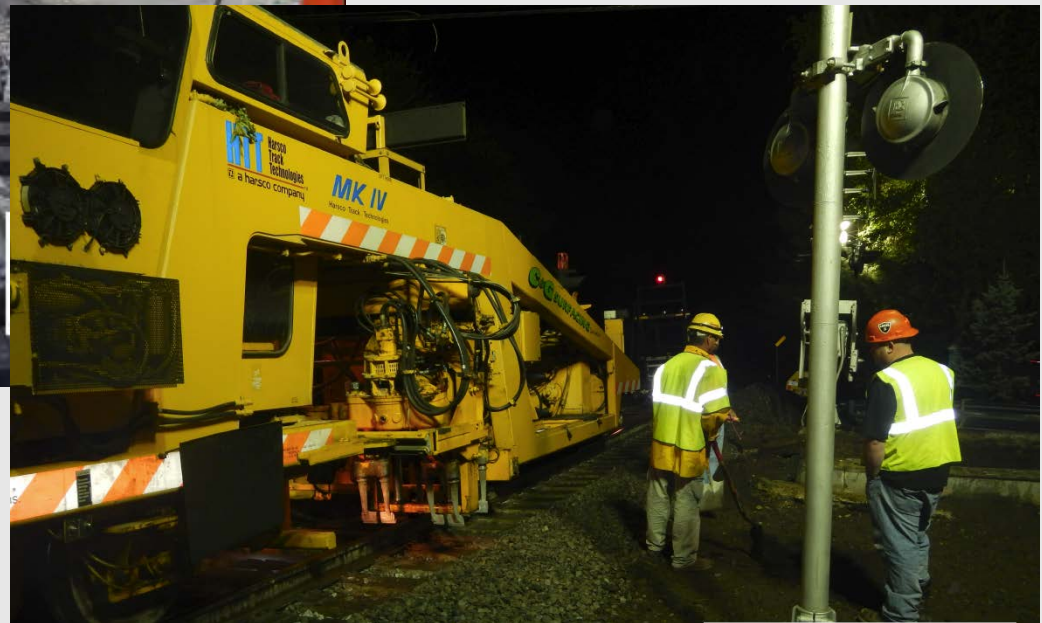




New signal and signal house in Lincoln



Grade Crossing Replacement – Tower Rd, Lincoln



Curve Modifications to Increase Speed



Curve Work





New CP-37 Crossovers





Construction Impact on Service

- Weekend service suspensions starting Fall 2013 have successfully facilitated the work
- Starting August 2014 - single track for Concord bridge work required adjustments to weekday train schedule
- *Bonus: Additional Service to Littleton-495*
- *Speed increases starting in January 2015*



CP-37 Friday Evening





CP-37 Monday Morning





2015 Weekend Service

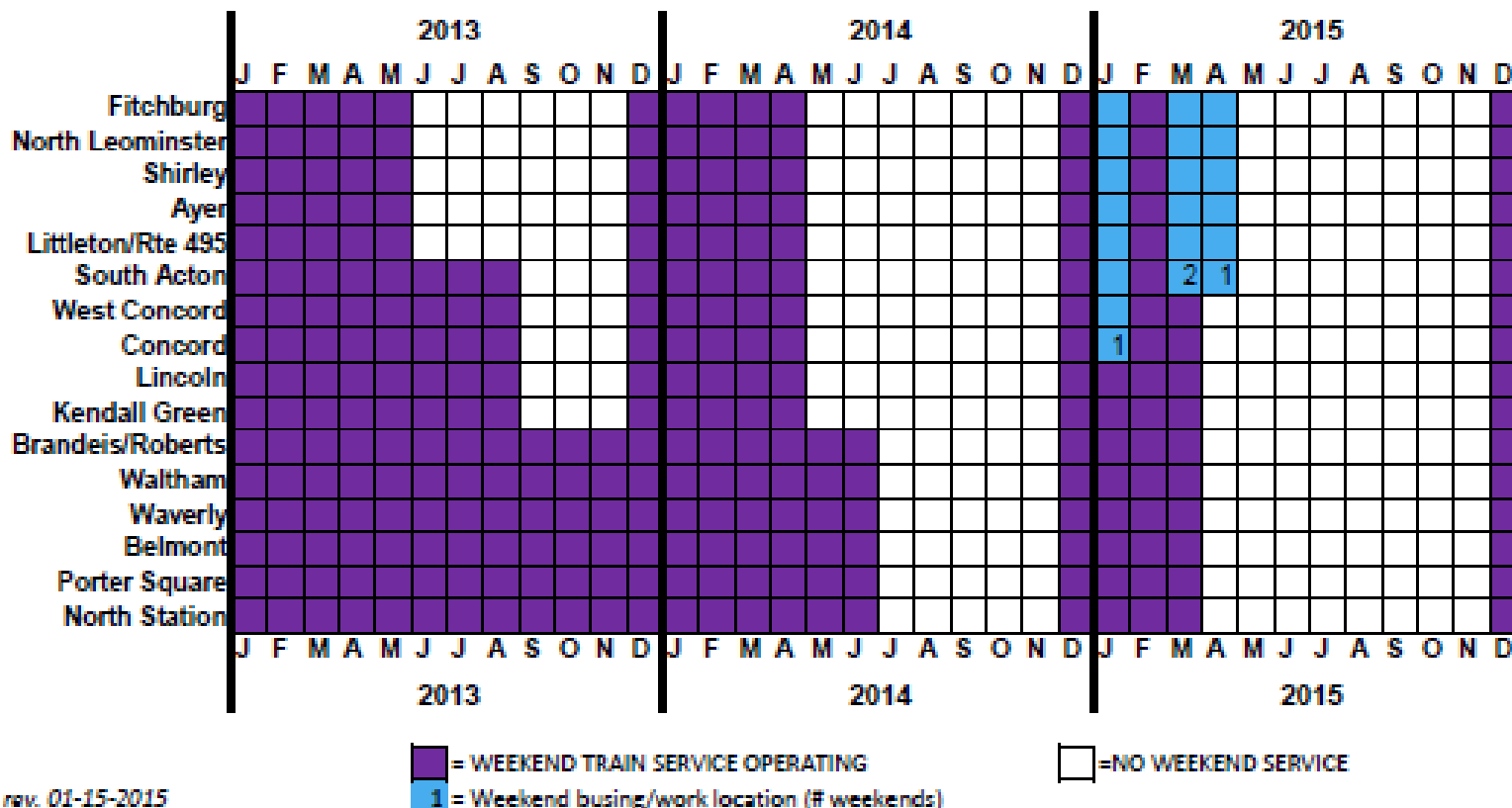
- Partial busing of the Line on the weekends of: January 24/25, March 21/22, March 28/29, and April 11/12
- April 25 through Nov 22:
 - No Weekend Service
- Normal service on Holiday Weekends
 - Memorial Day, Independence Day, Labor Day



Weekend Service Summary

MBTA Fitchburg Line

Weekend Service Outage Plan for Construction



rev. 01-15-2015

= WEEKEND TRAIN SERVICE OPERATING
 = NO WEEKEND SERVICE
 1 = Weekend busing/work location (# weekends)

Note: Service to operate Boston-Fitchburg on Memorial Day, Independence Day, and Labor Day wknds

Note: Limits of busing are subject to change.



Wachusett Extension





Wachusett Extension - Status

- Design and permitting complete
- Four construction packages
 - Station/layover site prep – Complete
 - Station/layover construction – Underway
 - Bridge repairs – Start Spring 2014
 - Pan Am track/signal work – Start Spring 2015
- Service to start Fall 2016



Wachusett Layover Status





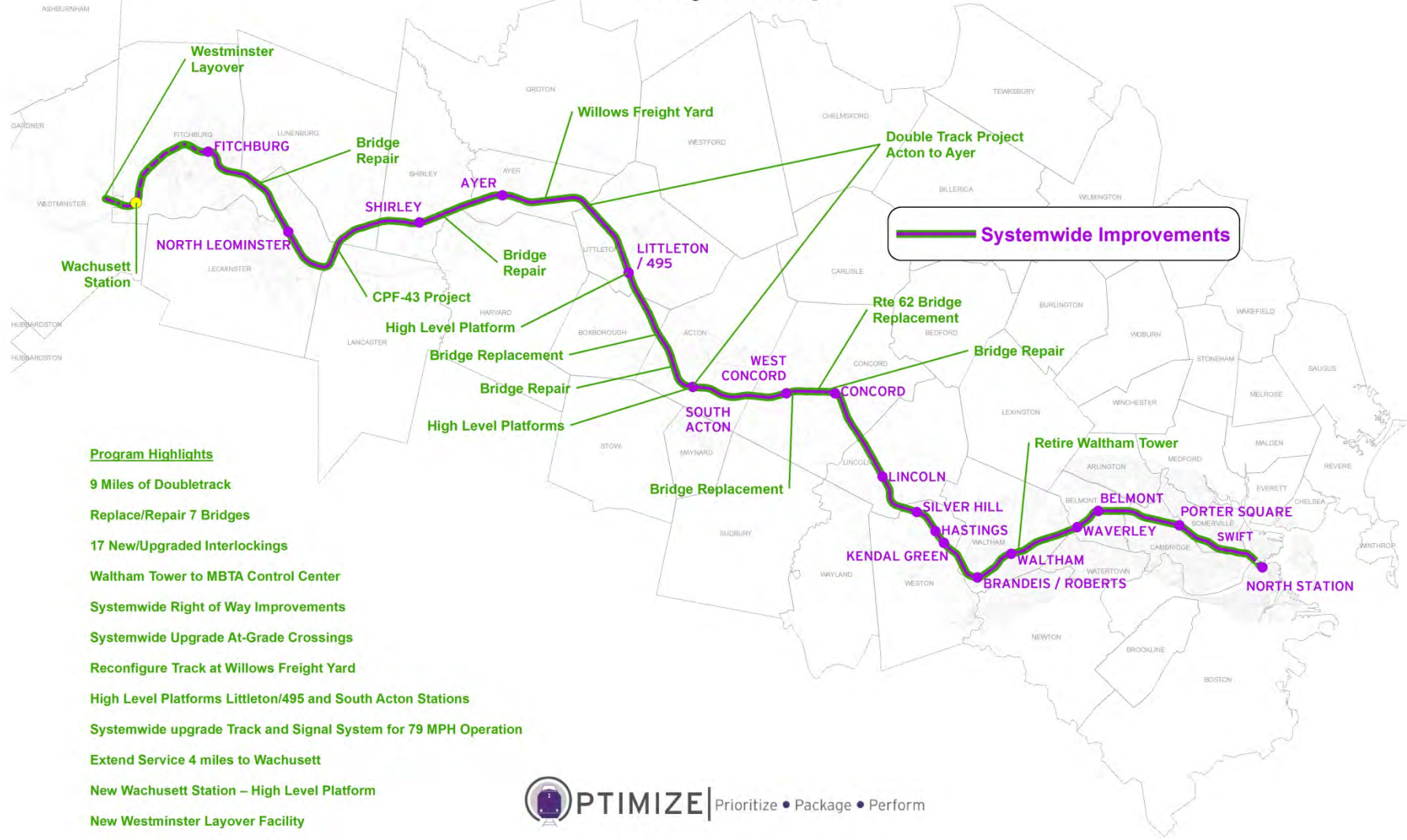
Wachusett Station Status





Project Map

Fitchburg Commuter Rail Line Improvement Program Project Map



Program Highlights

- 9 Miles of Doubletrack
- Replace/Repair 7 Bridges
- 17 New/Upgraded Interlockings
- Waltham Tower to MBTA Control Center
- Systemwide Right of Way Improvements
- Systemwide Upgrade At-Grade Crossings
- Reconfigure Track at Willows Freight Yard
- High Level Platforms Littleton/495 and South Acton Stations
- Systemwide upgrade Track and Signal System for 79 MPH Operation
- Extend Service 4 miles to Wachusett
- New Wachusett Station – High Level Platform
- New Westminster Layover Facility