

# Dos Rios Ranch



Douglas Steakley Photography

The Dos Rios Ranch Acquisition and restoration project includes over 1,600 acres of strategically located land where the San Joaquin and Tuolumne Rivers meet just west of Modesto. The project is a cornerstone in the development of the Tuolumne River Parkway.

- The Ranch lies between the San Joaquin River National Wildlife Refuge and upstream park and restoration projects thus providing a critical link for the Lower Tuolumne River Parkway.
- Provides Families with Access to the Outdoors just Twenty Minutes from Modesto, the San Joaquin Valley's Third Largest City
- Expands Public Fishing and Canoeing Opportunities
- Enhances Central Valley Flood Control
- Restores 6 miles of river frontage along the San Joaquin and Tuolumne Rivers
- Increases the size of the San Joaquin River National Wildlife Refuge by 24%
- Reduces Land Use Conflicts by Providing Habitat for Threatened and Endangered Species and other Wildlife
- Willing Seller

## Contact

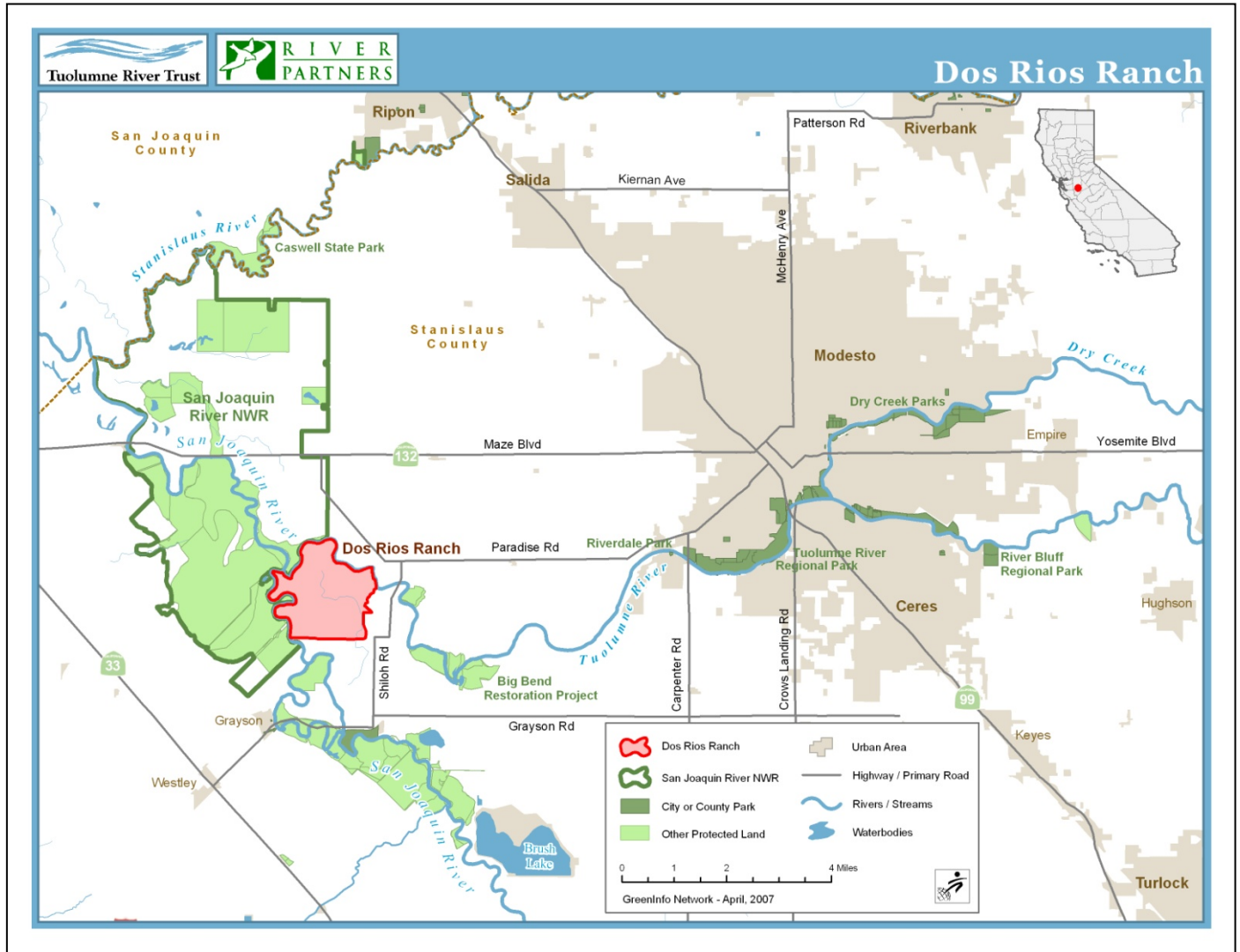
Jesse Roseman  
Tuolumne River Trust  
829 Thirteenth Street  
Modesto, CA 95354  
(209) 236-0660  
jesse.roseman@tuolumne.org

John Carlon  
River Partners  
580 Vallambrosa Avenue  
Chico, CA 95926  
(530) 894-5401  
jcarlon@riverpartners.org



# Dos Rios Ranch

## The Lower Tuolumne River Parkway



Located just 20 minutes from Modesto, the third largest city in the San Joaquin Valley, and 1 hour from the Bay Area and Sacramento, the Dos Rios Ranch lies at the heart of an ever expanding population that is demanding more and more from the State's natural resources.

The Ranch lies between the Tuolumne River Regional Park and the San Joaquin River National Wildlife Refuge along a stretch of river proposed for the Lower Tuolumne River Parkway.

In 2005 the Tuolumne River Coalition, a collaborative of local agencies and organizations, developed a vision for the lower Tuolumne River titled, *The Lower Tuolumne River Parkway – A Framework for the Future*. This document presented a blueprint for a mosaic of public and private projects along the 52 miles of river from La Grange to the San Joaquin River.

With the Tuolumne River Regional Park and the San Joaquin River National Wildlife Refuge as bookends, the Dos Rios Ranch will move this vision forward by providing a critical piece in the puzzle for the Lower Tuolumne River Parkway.