

CONTENTS



Museum Pass

Museum Pass Holders can enjoy unlimited admission to the exhibition halls of 7 museums (excluding some special exhibitions; programmes of Hong Kong Space Museum's Stanley Ho Space Theatre):

- Hong Kong Museum of Art
- Hong Kong Museum of History
- Hong Kong Heritage Museum
- Hong Kong Science Museum
- Hong Kong Space Museum
- Hong Kong Museum of Coastal Defence
- Dr Sun Yat-sen Museum

Annual Pass \$100 Half Year Pass \$50
Family Annual Pass \$200 Weekly Pass \$30

• Full time students, people with disabilities and senior citizens aged 60 or above, get 50% off for Half Year Pass and Annual Pass.

• Annual / Half Year Pass holders will enjoy additional privileges. For details please refer to LCSD website
<http://www.museums.gov.hk/museum-pass>

Free Admission on Wednesday for all LCSD museums !!

Single Standard Ticket

Prices stated in relevant content pages on individual museums

Concession for Group Ticket

30% off the Standard Ticket (for 20 persons or above)

Concessionary Ticket

50% off the Standard Ticket for full time students, people with disabilities and senior citizens aged 60 or above

Contents	1
Preface	2
Museums by Districts	4
Tsim Sha Tsui	6
Hong Kong Museum of Art	8
Hong Kong Museum of History	10
Hong Kong Science Museum	12
Hong Kong Space Museum	14
Hong Kong Heritage Discovery Centre	16
Central and Western Districts	18
Dr Sun Yat-sen Museum	20
Flagstaff House Museum of Tea Ware	22
Hong Kong Visual Arts Centre	23
Hong Kong Island East	24
Hong Kong Museum of Coastal Defence	26
Fireboat Alexander Grantham Exhibition Gallery	28
Hong Kong Film Archive	30
New Territories	32
Hong Kong Heritage Museum	34
Hong Kong Railway Museum	36
Museums of Special Interest	38
Law Uk Folk Museum	41
Lei Cheng Uk Han Tomb Museum	42
Sam Tung Uk Museum	43
Ping Shan Tang Clan Gallery cum Heritage Trail Visitors Centre	44
Sheung Yiu Folk Museum	45
Plan Your Cultural Tours	46
One Day Tour of Tsim Sha Tsui	48
One Day Tour of the New Territories	50
Half Day Tour of Central & Western Districts	52
Half Day Tour of Hong Kong Island East	54
Useful Information	56

香港

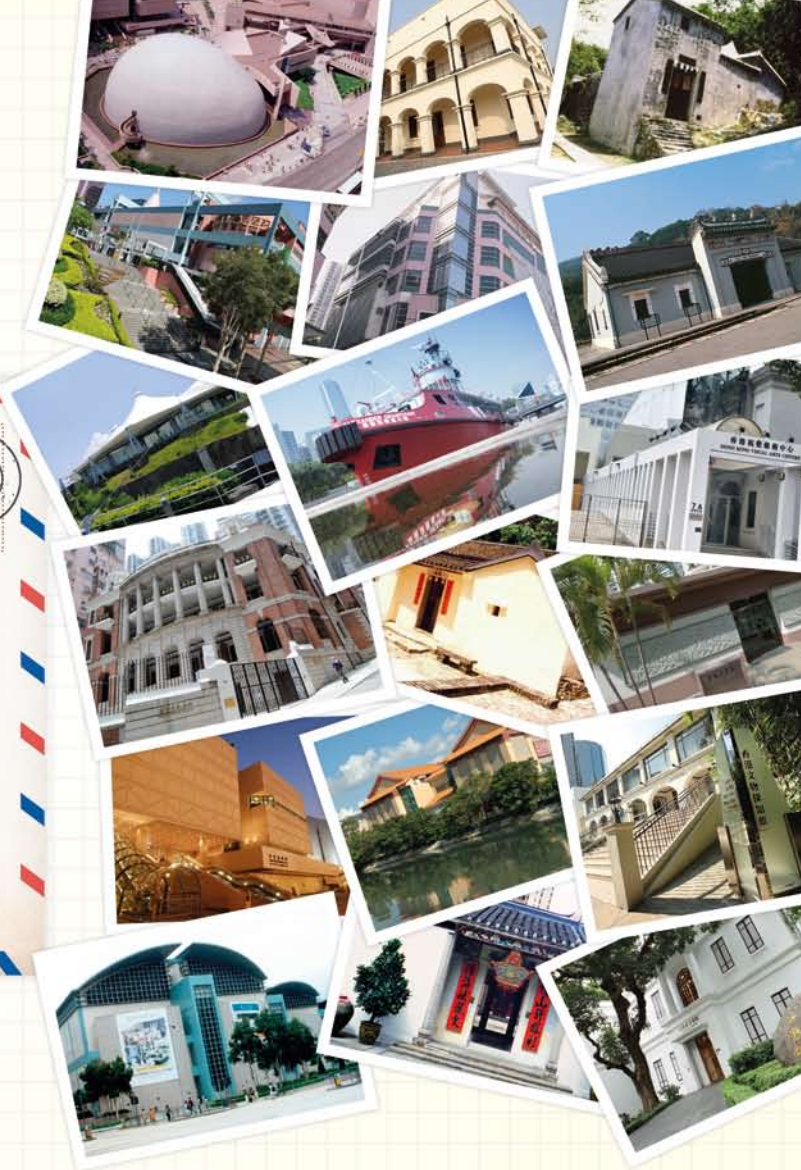




LEISURE AND CULTURAL SERVICES DEPARTMENT

Hong Kong is a dynamic and vibrant city with lots of attractions such as sight-seeing spots, shopping and dining facilities. Millions of visitors all over the world come to Hong Kong. If you want to learn more about Hong Kong's unique culture during your stay, come visit museums under the management of the Leisure and Cultural Services Department (LCSD).

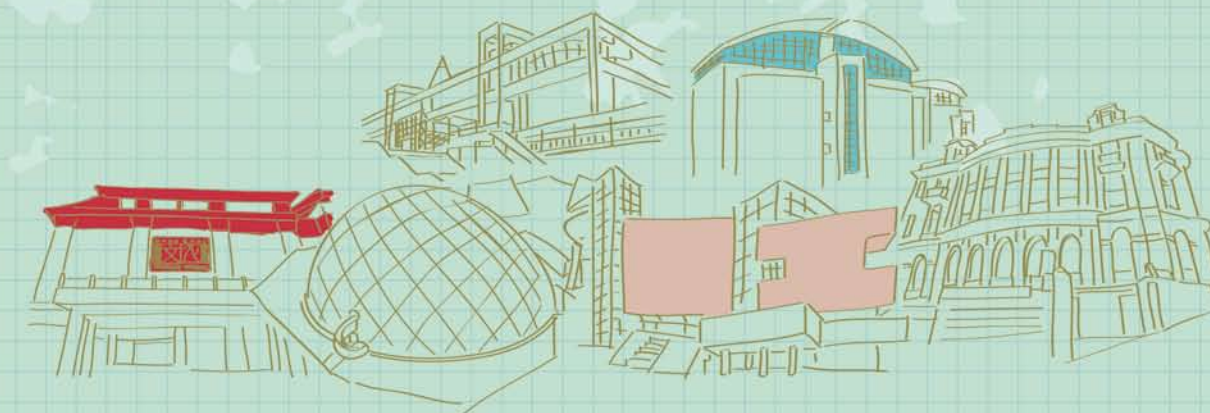
LCSD oversees 14 museums and four cultural venues which fall under three broad streams - art, history and science. They collect, conserve, exhibit, convey and conduct research on tangible and intangible heritage of Hong Kong for both educational and entertainment purposes. Apart from permanent exhibitions, the museums also stage thematic exhibitions with different themes and focuses to display the diverse culture in Hong Kong. We hope our museums will bring you inspiring and enjoyable experiences to enrich your journey in Hong Kong.



MUSEUMS

Bring you inspiring experiences in

Art·History·Science



Ping Shan Tang
Clay Gallery cum
View Stage Trail
Visitors Centre

Hong Kong
Railway Museum

Sam Tung Uk
Museum

Hong Kong
Heritage
Museum

Sheung Yiu
Folk Museum

Lei Cheng Uk
Museum
Han Tomb

Hong Kong
Heritage Discovery
Centre

Hong Kong
Science Museum

Hong Kong
Museum of History

Hong Kong
Museum of Art

Hong Kong
Space Museum

Dr Sun Yat-sen Museum

Flagstaff House
Museum of Tea Ware

Hong Kong
Museum of
Coastal Defence

Hong Kong Film Archive

Hong Kong
Visual Arts Centre

Fireboat
Alexander Grantham
Exhibition Gallery

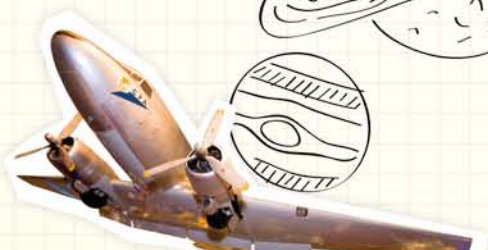
Law Uk
Folk Museum



香港故事

TSIM SHA TSUI

Tsim Sha Tsui is a must-go place for you to feel the pulse of the city. The stunning night view of the Victoria Harbour, the bustling Nathan Road, the signature clock tower as well as shopping malls and famous hotels, are all hot spots you don't want to miss. A number of museums are located in the district, check them out to enrich your visit to Hong Kong.



HONG KONG MUSEUM OF ART

Overlooking the world-renowned Victoria Harbour and situated next to the Avenue of Stars in Tsim Sha Tsui waterfront, is the Hong Kong Museum of Art, a leading visual arts museum in Asia.

The Hong Kong Museum of Art has a collection of over 15,000 pieces, showcasing the most distinguished Hong Kong and Chinese art. Its collections include representative works of local art, a world class collection of Ming and Qing Dynasties paintings and calligraphy; and contemporary masterpieces by Zhang Daqian, Lin Fengmian and Wu Guanzhong. The Museum also partners with reputable Mainland and overseas museums to showcase art treasures of the world.

Ha Bik-chuen Model of the Century 2004

10 Salisbury Road, Tsim Sha Tsui, Kowloon, Hong Kong

Monday to Wednesday, Friday and Sunday: 10:00 am to 6:00 pm

Saturday: 10:00 am to 8:00 pm

Christmas Eve and Chinese New Year's Eve: closed at 5:00 pm

Closed on Thursday (except Public Holidays) and on the first two days of Chinese New Year

\$10 2721 0116

<http://hk.art.museum>



Lin Fengmian Autumn Landscape 1977-1978

Lin was one of the pioneers of syncretism in the 20th Century. In *Autumn Landscape*, the traditional flat-distance perspective is forsaken and bold brushwork and bright colours are used.



Liu Shoukun Zhuangzi 1974

Employing an abstract approach that breaks away from the use of traditional brushwork, this work expresses the essence of Daoism – the enlightenment of Zhuangzi from which he obtained true freedom.



Liu Guosong Which is Earth? No.50 1969

Inspired by the images during the 1968 Apollo 8 mission, Liu began to explore a new language of Chinese ink art.



Wu Guanzhong Two swallows 1981

A master in the 20th Century Chinese Art, Wu said that *Two Swallows* was the most outstanding and representative piece of his works.

HONG KONG MUSEUM OF HISTORY

If you are travelling on a tight schedule but want to learn about the history and customs of Hong Kong, the Hong Kong Museum of History is the ideal place to go.

Located at Tsim Sha Tsui East, the Museum promotes local history and culture through more than 100,000 collections ranging from historical artefacts, manuscripts to old photos. Its popular permanent exhibition, "The Hong Kong Story", boasts life-sized exhibits for a one-stop telescopic view of local history and culture. It comprises 8 galleries with dioramas and multi-media programmes, augmented with audio-visual and lighting effects. Thematic exhibitions are also staged from time to time to showcase the history of China and the world.

▶ *Hong Kong Museum of History*
The permanent exhibition "The Hong Kong Story" occupies some 7,000 sq m.



▲ 100 Chatham Road South, Tsim Sha Tsui, Kowloon, Hong Kong
 ● Monday and Wednesday to Saturday: 10:00 am to 6:00 pm
 Sunday and Public Holidays: 10:00 am to 7:00 pm
 Christmas Eve and Chinese New Year's Eve: closed at 5:00 pm
 Closed on Tuesday (except Public Holidays) and on the first two days of Chinese New Year
 \$ \$10 ☎ 2724 9042
 🌐 <http://hk.history.museum>

▶ *Fishing Junk*
A wind-powered fishing vessel common in South China, which was also the living place of fishermen.



◀ *Double-Decker Tram of the 1950s*
Trams have been in service on Hong Kong Island since 1904. Single-deck tramcar was used initially and double-deck tram was introduced in 1912.



◀ *Bun Mountain*
Three bun mountains are erected in front of the temple dedicated to the Northern King, every year in the fourth lunar month at Cheung Chau Island.

▶ *Wing Wo Grocery Store*
The store operated at Wellington Street, Central from 1920s to 2009.



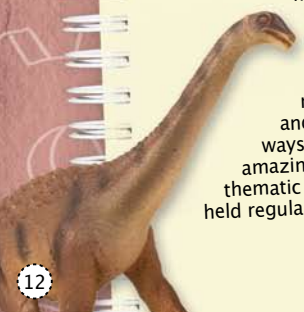
◀ *Shing Chai Tong Herb Company*
It was one of the first Chinese herbal medicine shops in Hong Kong. The Museum acquired the furniture and fittings of the shop, which are more than one hundred years old when it closed down in 1980.

HONG KONG SCIENCE MUSEUM

With over 500 pieces of exhibits, most of which are interactive in nature, Hong Kong Science Museum is a fun place for you to learn about the development of science and technology. It is right next door to the Hong Kong Museum of History in Tsim Sha Tsui East.

The Museum has 16 galleries covering a wide range of topics: light, sound, motion, electricity and magnetism, mathematics, life science, transportation, telecommunication, food science, energy, occupational safety and health and home technology.

Don't miss out the world's largest "Energy Machine", the first local airplane DC-3 and a giant skeleton of Lufengosaurus displayed at the museum. The "World of Mirrors" is also a popular exhibition, where ordinary mirrors are set up and aligned in special ways to give unusual and amazing reflections. Other thematic exhibitions are also held regularly.



2 Science Museum Road, Tsimshatsui East, Kowloon, Hong Kong

Monday to Wednesday and Friday: 1:00 pm to 9:00 pm

Saturday, Sunday and Public Holidays: 10:00 am to 9:00 pm

Christmas Eve and Chinese New Year's Eve: closed at 5:00 pm

Closed on Thursday (except Public Holidays) and on the first two days of Chinese New Year

\$ 25 2732 3232

<http://hk.science.museum>



◀ The DC-3 "Betsy"
Hong Kong's first modern airliner



◀ Energy Machine
The 22 m high Energy Machine, the largest in the world. It can demonstrate how different kinds of energy are converted and transferred.

▶ Lufengosaurus magnus

Lufengosaurus is among the first complete dinosaur fossil unearthed in China. The one displayed here is remarkably preserved with about 70% of the entire skeleton being genuine.



◀ Mirrors of Invisibility

Two vertical plane mirrors are connected at a specific angle to create an amazing visual effect.

HONG KONG SPACE MUSEUM



The Hong Kong Space Museum, its dome shaped architecture won't be missed if you are strolling along Tsim Sha Tsui waterfront. Its unique architecture is one of the landmarks of the city.

The Museum pioneers in having Asia's first OMNIMAX film projector and the world's first fully automatic planetarium control system. Its Stanley Ho Space Theatre presents fascinating programmes on astronomy and the natural world. The exhibition hall displays many interactive exhibits, such as Gyro-chair, Moon Walk and Virtual Glider.

The Space Museum's website is a rich resource of information on stargazing, basic astronomy and the latest astronomical news.

📍 10 Salisbury Road, Tsim Sha Tsui, Kowloon, Hong Kong

🕒 Monday, Wednesday, Thursday and Friday: 1:00 pm to 9:00 pm
 Saturday, Sunday and Public Holidays: 10:00 am to 9:00 pm
 Christmas Eve and Chinese New Year's Eve: closed at 5:00 pm

📞 Closed on Tuesday (except Public Holidays) and on the first two days of Chinese New Year

💰 Sky Shows
 Standard ticket: 2721 0226
 Front Stalls \$24
 Stalls \$32

🌐 <http://hk.space.museum>



◀ Moon Walk
Experience the feeling of weightlessness in a simulated moon walk.

▶ Gyro-chair
Try steer a spinning flywheel at the "Gyro-chair" to understand how rockets stabilize their flight direction.



▶ Stanley Ho Space Theatre



▶ Virtual Glider
Navigate through the virtual world of the Grand Canyon at the "Virtual Glider".

HONG KONG HERITAGE DISCOVERY CENTRE

香港文物探知館

Former British barracks built around 1910 have been preserved in the hustle and bustle of Tsim Sha Tsui. Two blocks were converted into the Hong Kong Heritage Discovery Centre in 2005 to house historic artefacts in Hong Kong.

The Centre is located at Kowloon Park, in close proximity to Canton Road. The permanent exhibition "Explore Our Heritage" is divided into Archaeology and Built Heritage Sections. Through the display of representative artefacts, along with models, multimedia programmes and interactive exhibits, the exhibition presents Hong Kong's rich cultural heritage.



📍 Kowloon Park, Haiphong Road, Tsim Sha Tsui, Kowloon

🕒 Monday to Wednesday, Friday to Saturday: 10:00 am to 6:00 pm
Sunday and Public Holidays: 10:00 am to 7:00 pm
Christmas Eve and Chinese New Year's Eve: closed at 5:00 pm
Closed on Thursday (except Public Holidays) and on the first two days of Chinese New Year

💰 Free Admission 📞 2208 4400

🌐 http://www.amo.gov.hk/en/discovery_center.php



▲ The courtyard of the Heritage Discovery Centre



▶ Archaeology Section of the permanent exhibition "Explore Our Heritage"

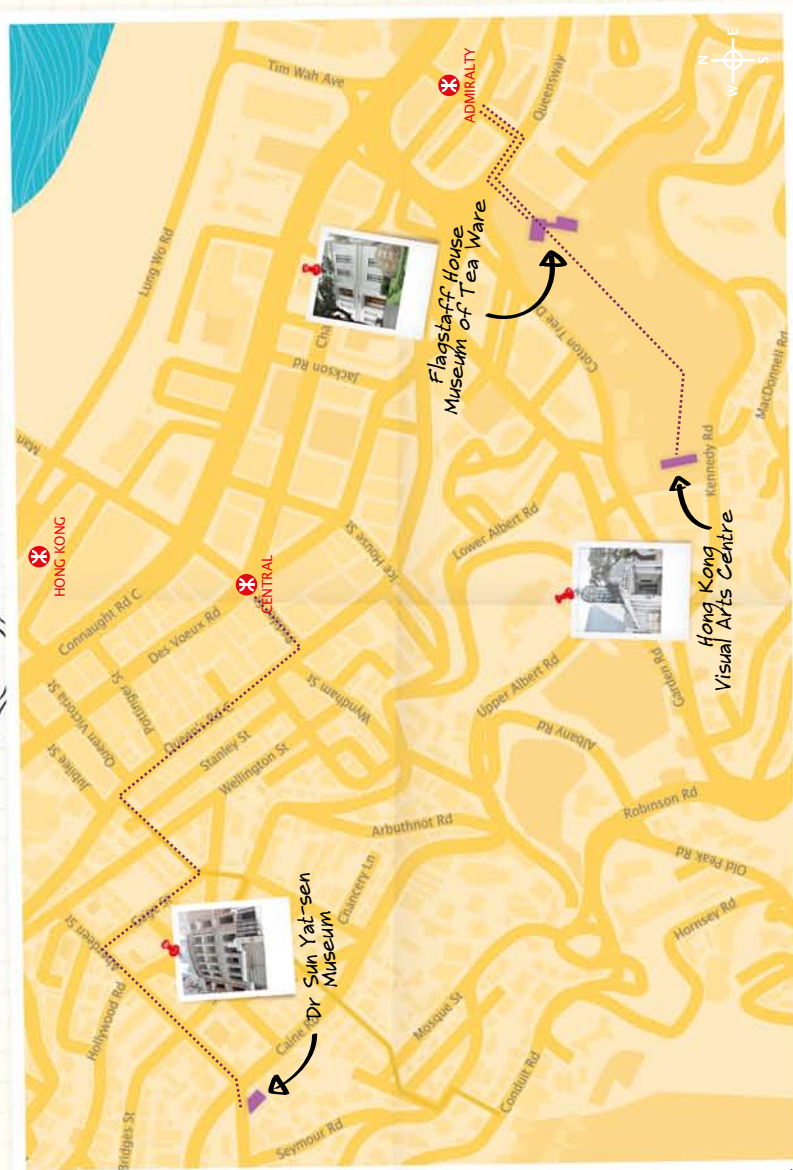
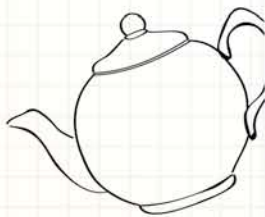


◀ Built Heritage Section of the permanent exhibition "Explore Our Heritage"



Central and Western Districts

Hong Kong is an international financial and trading centre, with Central and Western Districts right at its heart. Amidst the commercial skyscrapers stand a number of heritage buildings with significant historical and cultural value. Some of them have been converted into museums. Come take a look at the Central and Western Districts from a whole new perspective.



孫中山紀念館

DR SUN YAT-SEN MUSEUM

DR SUN YAT-SEN MUSEUM

Dr Sun Yat-sen was a world-renowned political figure who devoted his entire life to the welfare of the Chinese people. His achievements were well-recognised and highly regarded. He had a close relationship with Hong Kong where he received his secondary and college education. Dr Sun Yat-sen Museum, set up in memory of this great Chinese statesman, allows us to re-trace his footsteps in Hong Kong.

Displaying a number of precious historical artefacts and supplemented by a wide range of multi-media programmes, the Museum introduces the life and career of Dr Sun. Another feature of the Museum is its unique architecture. Kom Tong Hall, where the Museum stands, was built in 1914.

It was originally the residence of a local businessman Mr Ho Kom Tong and is one of the few well-preserved 20th century buildings in Hong Kong. Its majestic interior design such as the stained-glass windows, balcony, wall tiles and staircase railings are still in good conditions.

◀ Bronze bust of Dr Sun Yat-sen. It was made at the order of his Japanese friend Umeya Shoukichi (1929)



▲ 7 Castle Road, Mid-Levels, Central, Hong Kong

● Monday to Wednesday and Friday to Saturday: 10:00 am to 6:00 pm

Sunday and Public Holidays: 10:00 am to 7:00 pm

Christmas Eve and Chinese New Year's Eve: closed at 5:00 pm

Closed on Thursday (except Public Holidays, the anniversaries of Dr Sun's birth (12 November) and death (12 March)) and on the first two days of Chinese New Year

\$ \$10

☎ 2367 6373

🌐 <http://hk.dr.sunyatsen.museum>



▶ Dr Sun Yat-sen Museum

Being typical Edwardian Classical architecture, this four-storey building was supported by the Greek-style granite columns.



▲ White Hall

Originally a French style sitting room of Kom Tong Hall, it is now the Special Exhibition Gallery of the museum. Being well decorated with white color, it is known as "White Hall".



▲ The spacious and well-ventilated balcony



▶ Badge in commemoration of Dr Sun Yat-sen's grand funeral (1929)



▲ Photograph of Dr Sun Yat-sen and his daughters (1912)

FLAGSTAFF HOUSE MUSEUM OF TEA WARE

When you pass by the shopping malls in Admiralty, don't miss out the Flagstaff House Museum of Tea Ware situated in the Hong Kong Park. The Museum is converted from a historical building built in 1846 named Flagstaff House. It was formerly the residence and office of the Commander of British Forces in Hong Kong.



▲ The Flagstaff House Museum of Tea Ware

The Flagstaff House Museum of Tea Ware is devoted to promoting the long cherished tradition of Chinese tea-drinking. Its exhibits include tea ware from the Tang to Qing Dynasties and displays on the different methods of tea preparation. Adjacent to the Museum is its new wing, the K S Lo Gallery which exhibits rare Chinese ceramics and Chinese seals. The Museum also organises tea demonstrations regularly for visitors to enjoy Chinese tea.



▲ Twelve cups in Famille-verte style representing the Flowers of the Months Mark and period of Kangxi, Qing Dynasty (1662-1722)



▲ Teapot of gourd shape Qing Dynasty (Early 19th century)

▲ 10 Cotton Tree Drive, Central, Hong Kong (inside Hong Kong Park)

● Monday and Wednesday to Sunday: 10:00 am to 5:00 pm

Closed on Tuesday, Christmas Day and Boxing Day, New Year's Day, and the first three days of the Chinese New Year

💰 Free admission 📞 2869 0690

🌐 <http://www.lcsd.gov.hk/CE/Museum/Arts/english/tea/tea.html>

HONG KONG VISUAL ARTS CENTRE

Hong Kong Visual Arts Centre is another cultural venue located in colonial architecture inside the Hong Kong Park. It is converted from the Cassels Block, former British barracks in 19th century Edwardian architectural style, erected on a sloping terrain with four terraced steps. The architecture of the Centre is now a magnificent combination of historic structures and modern features such as metal framework and glass roof.



▲ Hong Kong Visual Arts Centre

As a base for art training, the Centre organises workshops regularly in ceramics, sculpture, print-making, painting and other new media. Various visual arts exhibitions are staged here regularly. It is such a wonderful experience to appreciate art in this beautiful environment.

▼ Painting workshop



▲ Visual arts exhibition



▲ 7A Kennedy Road, Central, Hong Kong (inside Hong Kong Park)

● Monday and Wednesday to Sunday: 10:00 am to 9:00 pm

Mid-autumn Festival, Winter Solstice Festival, Christmas Eve, New Year Eve and Chinese New Year's Eve: closed at 5:00 pm

Closed on Tuesday, New Year's Day, Christmas Day, Boxing Day and the first three days of the Chinese New Year

💰 Free admission 📞 2521 3008

🌐 <http://www.lcsd.gov.hk/apo>

HONG KONG MUSEUM OF COASTAL DEFENCE

The densely populated Island East district used to be a major battlefield in old days where redoubt, fort and military quarters were built. Today, these wartime remains have become part of the Hong Kong Museum of Coastal Defence.

The Museum consists of two main areas: the Redoubt and the Historical Trail. The exhibition galleries in the Redoubt feature Hong Kong's coastal defence in the Ming and Qing Dynasties as well as periods under the British rule and Japanese invasion. Other military structures such as the Brennan Torpedo Station, Caponiers and Magazines, have been preserved and now form part of a Historical Trail open to public. You can stroll along to recapture Hong Kong's wartime history, and enjoy the scenery of the Lei Yue Mun Pass at the same time.

▲ 175 Tung Hei Road, Shau Kei Wan, Hong Kong

● Monday to Wednesday and Friday to Sunday: 10:00 am to 5:00 pm

(During 1 July to 31 August, every Saturday, Sunday and Public Holidays: closed at 6:00 pm)

○ Closed on Thursday (except Public Holidays) and the first two days of Chinese New Year

● \$10 📞 2569 1500

▶ <http://hk.coastaldefence.museum>



◀ Hong Kong Museum of Coastal Defence

▶ Display of scout car, armoured personnel carrier and tank (from front to rear) in the Military Vehicle and Gun Display Area



◀ Armour piercing shells and uniforms of the Royal Artillery



Casemates in the Redoubt used for barrack rooms are renovated as galleries to depict the 600-year history of Hong Kong's coastal defence.

▶ Ruined structure

The Royal Artillery built in 1910. On 18 December 1941, Japanese army invaded Hong Kong Island through Lei Yue Mun Fort and fierce fighting broke out. Firing marks can still be seen on the walls.



FIREBOAT ALEXANDER GRANTHAM EXHIBITION GALLERY

The Hong Kong Museum of History acquired the fireboat *Alexander Grantham* as its collection after she was decommissioned in 2002. After refitting, the fireboat is opened for public viewing in the purpose-built Fireboat Alexander Grantham Exhibition Gallery in the Quarry Bay Park.

Commissioned in 1953, *Alexander Grantham* was the flagship of the Hong Kong Fire Services Department's fireboat team. She had participated in numerous fire fighting and rescue operations, making her a testimony of the history of Hong Kong's sea rescue services, and a showcase of the achievements of the local shipbuilding industry in the 1950s. Come and share *Alexander Grantham's* golden past, and enjoy the scenic view of the Victoria Harbour on the deck.

🏠 Quarry Bay Park, Hong Kong

🕒 Monday and Wednesday to Sunday:
9:00 am to 5:00 pm

📅 Closed on Tuesday (except Public
Holidays) and on the first two days
of Chinese New Year

💰 Free admission 📞 2367 7821

🌐 <http://hk.history.museum/en/fbag.php>



◀ The *Alexander Grantham* brass bell was originally located on its fire deck. Whenever the fireboat dropped anchor or was adrift in thick fog, the crew would toll the bell every minute to notify other vessels of its presence to prevent collisions.



◀ The semi-open design of the exhibition gallery allows visitors to look at the fireboat from all angles.

▼ Fire-fighting equipment on the deck



▲ Fireboat *Alexander Grantham* Exhibition Gallery



HONG KONG FILM ARCHIVE

Hong Kong film industry is internationally acclaimed, and our city is reputed as "Hollywood of the East". The Hong Kong Film Archive is a resourceful repository for you to learn about the development of our film culture and enjoy local classic movies produced at different periods.

The Film Archive is equipped with state-of-the-art storage facilities to preserve the valuable film heritage in Hong Kong. Film lovers, researchers and members of the industry – do visit the Resource Centre, which has a rich collection of local films for public access through the computer terminals in the centre. Classic movies are on show regularly at the theatre in the Film Archive.

📍 50 Lei King Road, Sai Wan Ho, Hong Kong

🕒 Monday to Wednesday and Friday to Sunday: 10:00 am to 8:00 pm or 15 minutes after the end of the last screening

Christmas Eve and Chinese New Year's Eve: closed at 5:00 pm

Closed on Thursday (except Public Holidays) and the first two days of the Chinese New Year

💰 Exhibition Hall: 📞 2739 2139
Free Admission

Cinema: Ticket is charged (Please refer to website or call to enquiry for ticketing information)

🌐 <http://www.filmarchive.gov.hk>



◀ Resource Centre

The Resource Centre houses a large variety of audiovisual materials and film-related books and periodicals for onsite reference by the public.

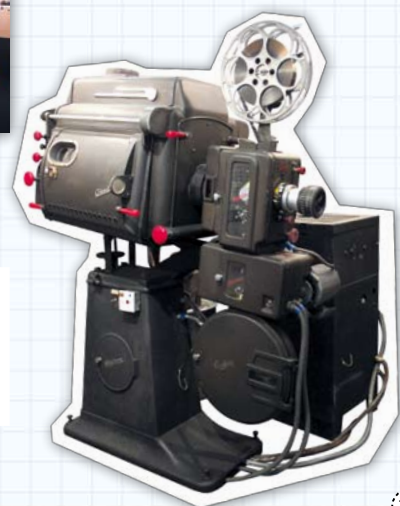
▶ Exhibition Hall

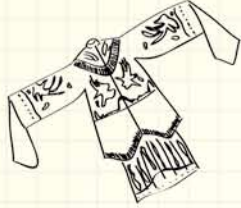
Thematic exhibitions on classic movies, film celebrities, directors, film companies, etc are hosted regularly.



▶ In memory of Queen's Theatre

This Ashcraft carbon arc-lamp film projector was originally placed at the Queen's Theatre, Central. It was donated by the Queen's Theatre following its closure on 30th September 2007, after 80 years of operation.

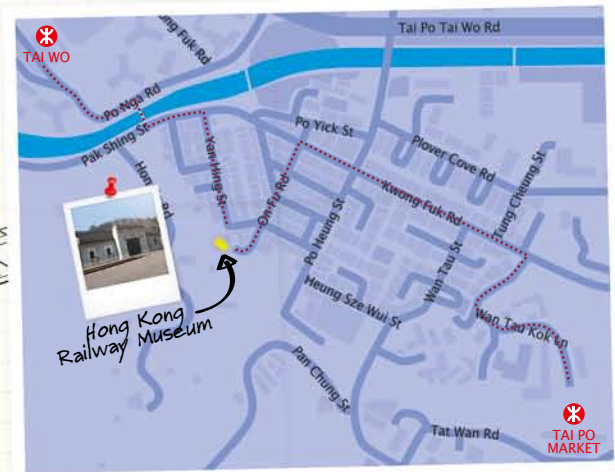
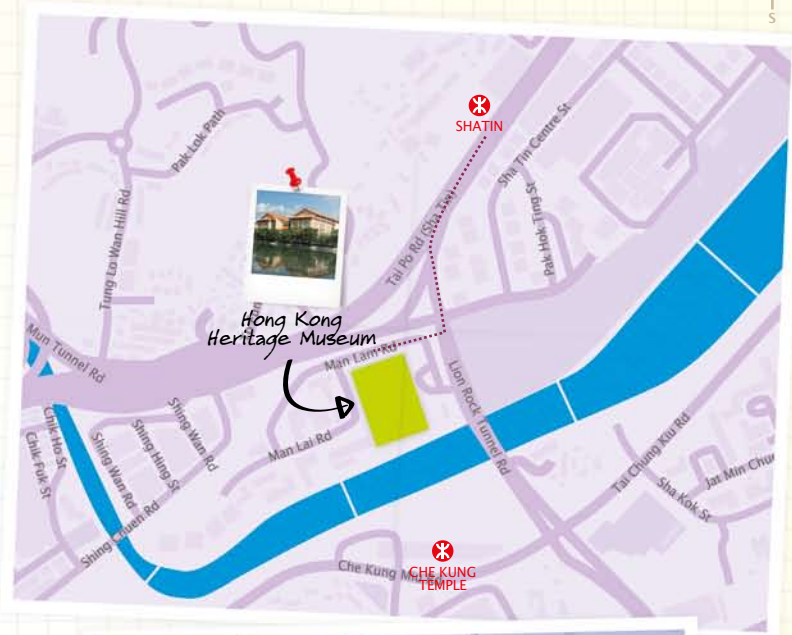




NEW TERRITORIES - SHATIN AND TAI PO



History of the New Territories can be traced back to the Ming and Qing Dynasties. Rapid development began in the 1970's when new towns and transport infrastructure were built. In recent years, Shatin and Tai Po have become hot spots for dining and shopping. If you are visiting these two districts, do spend some time on the two featured museums to make your visit more interesting.



HONG KONG HERITAGE MUSEUM

Don't miss out the Hong Kong Heritage Museum if you want to know more about the local culture. It is a multi-disciplinary museum, showcasing the living and creative culture of Hong Kong with special focus on design, pop culture, photography, Cantonese opera and intangible cultural heritage. The Museum also stages exhibitions to feature cultures from different parts of the world.

The Museum's permanent exhibition, the "New Territories Heritage Hall" exhibits over 300 artefacts through reconstructed scenes and multi-media programmes. The "T T Sui Gallery of Chinese Art" features fine Chinese art, ranging from ceramics and pottery sculptures to bronzes and Tibetan Treasures. The "Cantonese Opera Heritage Hall" showcases items once used by renowned Cantonese opera artistes, together with a reconstructed bamboo shed theatre.

The "Children's Discovery Gallery" is a place for fun, with games and interactive exhibits for children to learn about Hong Kong's natural environment and history. Also, there is the Hong Kong Toy Story exhibition, where antique toys are displayed.

➤ 1 Man Lam Road, Sha Tin, Hong Kong

➤ Monday, Wednesday to Saturday: 10:00 am to 6:00 pm

Sunday and Public Holidays: 10:00 am to 7:00 pm

Christmas Eve and Chinese New Year's Eve: closed at 5:00 pm

Closed on Tuesday (except Public Holidays) and the first two days of Chinese New Year

💰 \$10

☎ 2180 8188

➤ <http://hk.heritage.museum>



▶ New Territories Heritage Hall
Colony Armorial Bearings

▶ Cantonese Opera Heritage Hall

A bamboo shed theatre is reconstructed in the hall, where costumes and stage appliances are showcased.



◀ A great diversity of thematic exhibitions



◀ Children's Discovery Gallery

▶ Various education and extension programmes e.g. talks, seminars, guided tours, workshops and demonstrations are organised.



HONG KONG RAILWAY MUSEUM

Although no longer used, steam locomotive and diesel electric engine have become precious collections. Come to the Hong Kong Railway Museum in Tai Po town centre for a nostalgic tour to learn more about this important form of transport in Hong Kong.

This is an outdoor museum built on the old train station in Tai Po Market. With an area of 6,500 square metres, the Museum showcases the old station building, a narrow-gauge steam locomotive, a diesel electric engine, six historical carriages and the red-brick office block. The station building, built in 1913 with unique traditional Chinese architectural features such as pitched roof, was declared a monument in 1984. It was refurbished as a museum in 1985.

📍 13 Shung Tak Street, Tai Po Market, Tai Po, Hong Kong.

🕒 Monday, Wednesday to Sunday:
9:00 am to 5:00 pm

Closed on Tuesday, Christmas day, Boxing day, New Year's day and the first three days of Chinese New Year

💰 Free admission 📞 2653 3455

🌐 <http://www.heritagemuseum.gov.hk/eng/museums/railway.aspx>



◀ The first diesel electric engine used in Hong Kong, named after Governor Sir Alexander Grantham. It had served Hong Kong since 1955 and retired in 1997.

▶ Narrow-gauge steam locomotive began service in 1924 until 1928. It was sold to a sugar cane plantation in the Philippines. After negotiations with the owner and necessary restoration, it has been on display in the Railway Museum since 1997.

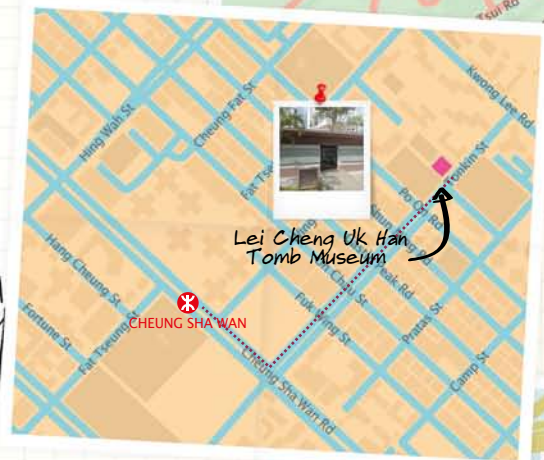
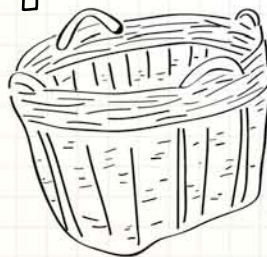


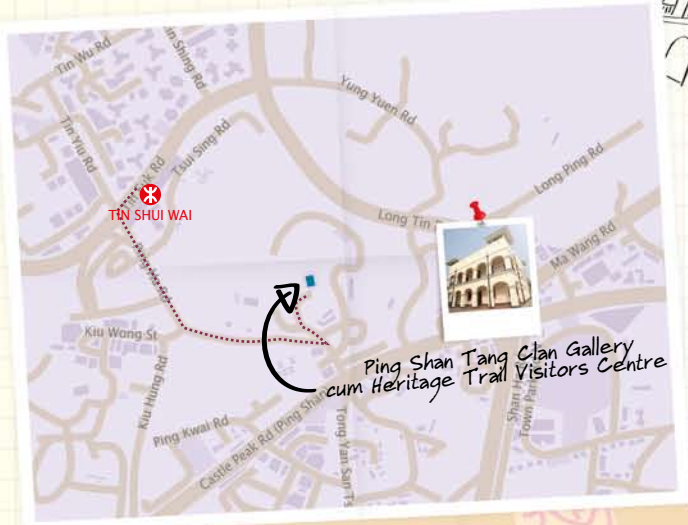
◀ Exhibition gallery



MUSEUMS OF SPECIAL INTEREST

Hong Kong used to be a small fishing village with history traced back to the Qin and Han Dynasties. Many historic artefacts had been unearthed by anthropologists in Hong Kong and they shed light on the rural life of local inhabitants in Hakka villages. A number of traditional houses and a tomb of the Han Dynasty have been preserved and converted into museums to display these artefacts.





Ping Shan Tang Clan Gallery cum Heritage Trail Visitors Centre



Special Interest

LAW UK FOLK MUSEUM

Law Uk (Law's House) Folk Museum is converted from an over 200-year-old village house built in the 18th century. It was originally owned by a Hakka family with the last name "Law". Situated in Chai Wan, the Museum is a standing witness to the development of the community.

A typical Hakka village house, Law Uk was declared a monument in 1989. The Folk Museum is furnished with furniture, utensils and farming tools selected from the ethnographic collection of the Hong Kong Museum of History. The architecture and the interior setting project a realistic view of the typical hard-working and resilient life of the Hakka people.



Sheung Yiu Folk Museum



Law Uk Folk Museum



Bedroom of Law Uk

- 📍 14 Kut Shing Street, Chai Wan, Hong Kong
- 🕒 Monday to Wednesday and Friday to Saturday: 10:00 am to 6:00 pm
Sunday and Public Holidays: 1:00 pm to 6:00 pm
Christmas Eve and Chinese New Year's Eve: closed at 5:00 pm
Closed on Thursday (except Public Holidays), Christmas Day, Boxing Day, New Year's Day and the first three days of Chinese New Year
- 💰 Free admission 📞 2896 7006
- 🌐 <http://hk.history.museum/en/luf.php>



LEI CHENG UK HAN TOMB MUSEUM

In the heart of Kowloon (just a couple of minutes walk from the popular computer products shopping hotspot in Sham Shui Po) stands a historic tomb of the Han Dynasty. It was discovered in 1955 in the course of public construction work in the area. Based on the structure, inscriptions and tomb bricks, it is believed that the tomb was built in the Eastern Han Dynasty (AD 25 - 220).



▲ Lei Cheng Uk Han Tomb Museum

The tomb was declared a monument in 1988. To protect the tomb from adverse environmental impact, a canopy has been constructed above it. Although the tomb is not open to public, visitors can see the interior through its entrance passage. An exhibition gallery is

set up adjacent to the tomb, where the geographical surroundings, discovery and structure of the tomb are introduced. The tomb finds are also displayed.

▲ 41 Tonkin Street, Sham Shui Po, Kowloon

● Monday to Wednesday and Friday to Saturday: 10:00 am to 6:00 pm

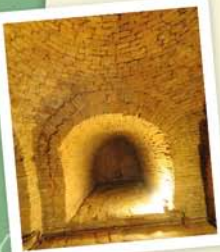
Sunday and Public Holidays: 1:00 pm to 6:00 pm

Christmas Eve and Chinese New Year's Eve: closed at 5:00 pm

Closed on Thursday (except Public Holidays), Christmas Day, Boxing Day, New Year's Day and the first three days of Chinese New Year

Free admission ☎ 2386 2863

http://hk.history.museum/en/lcuh.htm



▲ Inner view of the Han Tomb

SAM TUNG UK MUSEUM

Sam Tung Uk Museum is converted from a 200-year-old Hakka walled village. The village was declared a monument in 1981 and converted into a museum for public viewing.



▲ Sam Tung Uk Museum

Design of the Museum is developed based on the original architecture of the village. The symmetrical layout of the village resembles a chessboard with entrance hall, assembly hall and ancestral hall at the central axis. With four individual houses in the middle, the village is completely walled in by rows of houses at the two sides and the back.

Various agricultural tools and

everyday objects of the Hakka people are on display. A hands-on exhibition "The Way We Were" is specially designed to allow visitors to touch the exhibits to gain a taste of village life.



▲ 2 Kwu Uk Lane, Tsuen Wan, Hong Kong

● Monday, Wednesday to Sunday: 9:00 am to 5:00 pm

Closed on Tuesday, Christmas Day, Boxing Day, New Year's Day and the first three days of Chinese New Year

Free admission ☎ 2411 2001

http://www.heritagemuseum.gov.hk/eng/museums/samtunguk.aspx

Special Interest

PING SHAN TANG CLAN GALLERY CUM HERITAGE TRAIL VISITORS CENTRE



▲ The main building

The Centre is converted from the Old Ping Shan Police Station constructed in 1899 with many of its architectural features preserved such as arched verandah, observation posts, pitched roof and chimneys. The Centre comprises three galleries, namely the "Ping Shan Tang Clan Gallery", the "Gallery of Ping Shan Heritage Trail" and the "Community Heritage Gallery". The galleries display relics of the Tang clan, and stories on their history, customs and cultural life told by members of the clan. Monuments and buildings along the Ping Shan Heritage Trail and history and culture of Hong Kong, especially the New Territories are also presented in the Centre.

▼ Relics of the Tang Clan inside the gallery



▲ Hang Tau Tsuen, Ping Shan, Yuen Long, New Territories

● Tuesday to Sunday:
10:00 am to 5:00 pm

Closed on Monday (except Public Holidays) and the first two days of the Chinese New Year

● Free admission ☎ 2617 1959

▲ http://www.amo.gov.hk/en/ping_shan.php

Special Interest

SHEUNG YIU FOLK MUSEUM



▲ Sheung Yiu Folk Museum

Located inside the scenic Sai Kung Country Park, the Sheung Yiu Folk Museum is converted from a 150-year-old fortified Hakka village. It was declared a monument in 1981.

With an area of 500 square metres, the village was built on a 2-metre high platform. It was comprised of domestic units, pig pens, a cattle shed, a drying terrace and a 6-metre gate tower. Exhibits include furniture, farming tools which give you a glimpse into the life of Hakka people. Around 50 metres away from the museum, an old lime kiln located by the sea has been preserved. It was used by the villagers to produce lime for constructing houses.

▼ Lime Kiln



▲ Pak Tam Chung Nature Trail, Sai Kung, Hong Kong

● Monday, Wednesday to Sunday:
9:00 am to 4:00 pm

Closed on Tuesday, Christmas Day, Boxing Day, New Year's Day and the first three days of Chinese New Year

● Free admission ☎ 2792 6365

▲ <http://www.heritagemuseum.gov.hk/eng/museums/sheungyiufolk.aspx>

PLAN YOUR CULTURAL TOURS

There are so many attractions in Hong Kong, museums, fabulous shopping, exquisite dining, the Victoria Harbour night view and more.

Want to make the best use of your time in Hong Kong? Many of the museums are located near major tourist hot spots. Try out our recommended half-day and one-day tours to the museums and nearby attractions. Since the pace of visit of different visitors may vary, the estimated time for touring is for general reference only.



1 Day
Tour

New Territories

Tsim Sha Tsui

Hong Kong Island East

Hong Kong Island Central & Western Districts

1/2 Day
Tour

Two former British Barrack blocks inside Kowloon Park have been converted into the **Hong Kong Heritage Discovery Centre**. Visit the Centre to gain a better understanding of Hong Kong's rich cultural heritage.



The Hong Kong **Museum of History's** permanent exhibition: "The Hong Kong Story" takes you on a journey through time to experience the city's developments over the years.



Complete the day by exploring **Canton Road**, where major shopping arcades, hotels and dining hot spots are located.

CANTON ROAD

HAIPHONG ROAD

NATHAN ROAD

GRANVILLE ROAD

CHATHAM ROAD

The hemispherical dome architecture is the Stanley Ho **Hong Kong Space Theatre of the Museum**. Go in for an incredible experience!



Streets in the vicinity of **Granville Road** are shopping hot spots selling latest fashion at bargain prices. There are also many restaurants serving local cuisine.

Just next to the Museum of History is the **Hong Kong Science Museum**. With its fascinating interactive exhibits, it promises a great experience for visitors of all ages.

At 8pm every night, the "**Symphony of Lights**" show begins. Over 40 skyscrapers participate in lighting up the Victoria Harbour.

A 10 minutes walk will take you to Tsim Sha Tsui waterfront. **Tsim Sha Tsui Museum of Art** showcases representative works of Hong Kong art, ink painting and calligraphy of the Ming and Qing Dynasties.

The **Avenue of Stars** at Tsim Sha Tsui is a popular tourist attraction. Stroll along the avenue to enjoy the scenery of Victoria Harbour.

Tsim Sha Tsui Day Tour

Buddhist temples were built on the hill close to the Shatin MTR station. Among them is the famous **Ten Thousand Buddhas Monastery** built in 1957, housing over ten thousand Buddha statues.

Shatin Town centre is a popular dining hot spot with a good mix of international cuisines and local restaurants offering signature dishes such as barbecue pigeon and chicken congee.

A 15 minutes walk from Shatin MTR station through New Town Plaza, you will come to the **Hong Kong Heritage Museum** which organizes exhibitions on living and creative culture, including design, photography, Cantonese opera and intangible cultural heritage.

The **Hong Kong Railway Museum** has preserved the early 20th Century signal room and ticket counter. The narrow gauge steam locomotive, historical carriage and diesel electric engine are displayed.

Take the MTR to Tai Po Market station. Take a 15 minutes walk to reach the Hong Kong Railway Museum.

Sculptures by artists from Hong Kong, the Mainland and overseas are featured in the **City Art Square**.

New Territories 1 Day Tour



Hong Kong Island Central & Western Districts

1/2 Day Tour



SHEUNG WAN

3 Restaurants and bars sprout along the 800-metre escalator connecting Central and the Mid-Levels. The **Soho** area is the hot spot for eating and clubbing.



HONG KONG

2 Tram is one of the earliest form of transport in Hong Kong. A tram car (No. 120) still preserves its vintage 1949 design. It is painted in pale green with wooden chairs on upper deck.



CENTRAL



ADMIRALTY

1 The **Flagstaff House Museum of Tea Ware** inside the Hong Kong Park is converted from a heritage colonial building. Try out the Chinese tea and dim-sums at the tea house.



Hong Kong Park



Converted from a heritage building built in the early 20th Century, **Dr Sun Yat-sen Museum** presents Dr Sun's life and career. After visiting the museum, you can continue to explore the Dr Sun Yat-sen Historical Trail nearby.

CAINEROAD

CONNUGHT ROAD CENTRAL
DES VOUX ROAD CENTRAL

PEDDER STREET

QUEENS ROAD CENTRAL



Hong Kong Island East 1/2 Day Tour

3
Take a walk at the **Quarry Bay Park**. Watch out for chairs designed by local artists.

The **Fireboat Alexander Grantham** was decommissioned in 2002. It was preserved and placed in an Exhibition Gallery along the seafront promenade. Explore the facilities in the vintage fireboat and enjoy the scenery of the Victoria Harbour.

2
Take a stroll along the waterfront promenade to explore **Soho East** where you will find a good many food choices.

6
Travel by MTR to Shau Kei Wan station. Take a walk to the **Hong Kong Museum of Coastal Defence**, which is housed in the former Lei Yue Mun Fort. Walk along the Historical Trail outside the museum to see wartime remains and enjoy the scenery of Lei Yue Mun Pass.

1
The **Hong Kong Film Archive** has preserved a rich collection of local films. Classic movies are shown regularly on show here.

7
Long queues are commonly seen outside eating places in **Shau Kei Wan Main Street East**. Popular local cuisines served here include fish ball noodle and curry dishes.

5
The shopping mall in housing estates nearby offers multifarious choices for leisure, such as department store, cinema and skating rink.

TAIKOO

SAI WAN HO

SHAU KEI WAN

SHAU KEI WAN MAIN STREET EAST

ISLAND EASTERN CORRIDOR
SHAU KEI WAN ROAD





Leisure and Cultural
Services Department