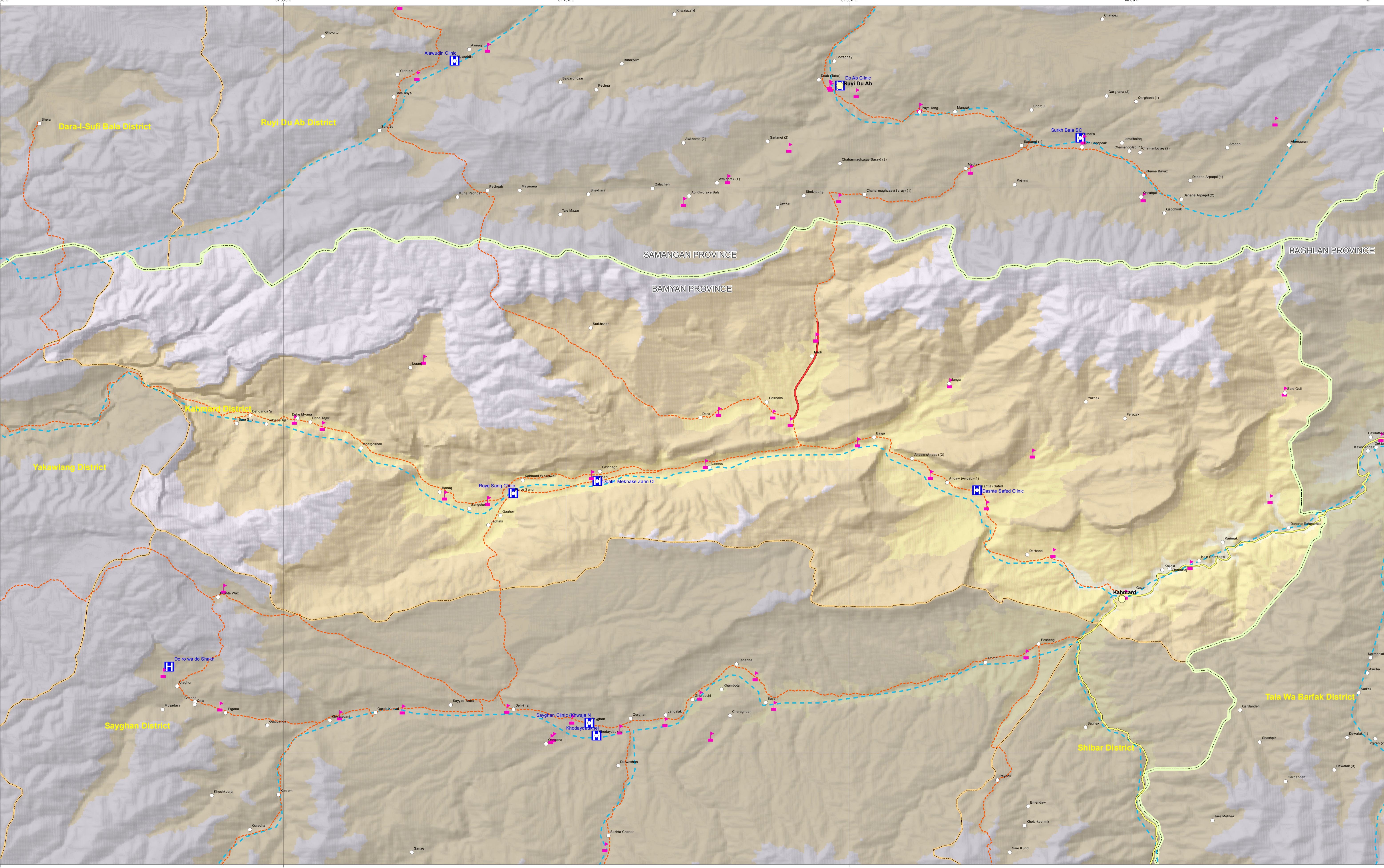


# AFGHANISTAN Kahmard District, Bamyan Province



**Legend**

|                 |                 |               |                          |                           |                |
|-----------------|-----------------|---------------|--------------------------|---------------------------|----------------|
| Villages        | Primary Roads   | Lakes         | Health Facilities        | <b>Elevation in Meter</b> |                |
| District Center | Secondary Roads | Dams          | International Boundaries | 0 - 200                   | 2,000 - 3,000  |
| Province Center | Tracks          | Schools       | Provincial Boundaries    | 200 - 400                 | 3,000 - 4,000  |
| Capital         | Rivers          | IDP Locations | District Boundaries      | 400 - 1,000               | 4,000 - 6,000  |
|                 |                 |               |                          | 1,000 - 1,500             | 6,000 - 10,000 |

0 5 10 20 Kilometers

Date created: Sept 6, 2011  
 Datum/projection: WGS84/Geographic  
 For copies or questions contact: sdisperati@immap.org

IMMAP is funded by the United States Agency for International Development (USAID)'s Office of U.S. Foreign Disaster Assistance (OFDA).

Data Sources:  
 Settlements: Afghanistan Information Management Services (AIMS)  
 Schools: Ministry of Education  
 Health Facilities: Ministry of Health

The boundaries, names, and designations used on this map do not imply official endorsement or acceptance by IMMAP or USAID/OFDA. All information is the best available at the time this map was produced.

**LOCATION DIAGRAM**

**IMMAP**

**USAID**  
FROM THE AMERICAN PEOPLE