

Pawtucket Commuter Rail Station Preliminary Engineering and Environmental Assessment

Pawtucket, Rhode Island



PUBLIC OUTREACH MEETING
JUNE 13, 2013 | 6:00 PM



Vanasse Hangen Brustlin, Inc. | Providence, Rhode Island





AGENDA

Introduction

History

Potential Locations

Project Development

Contact



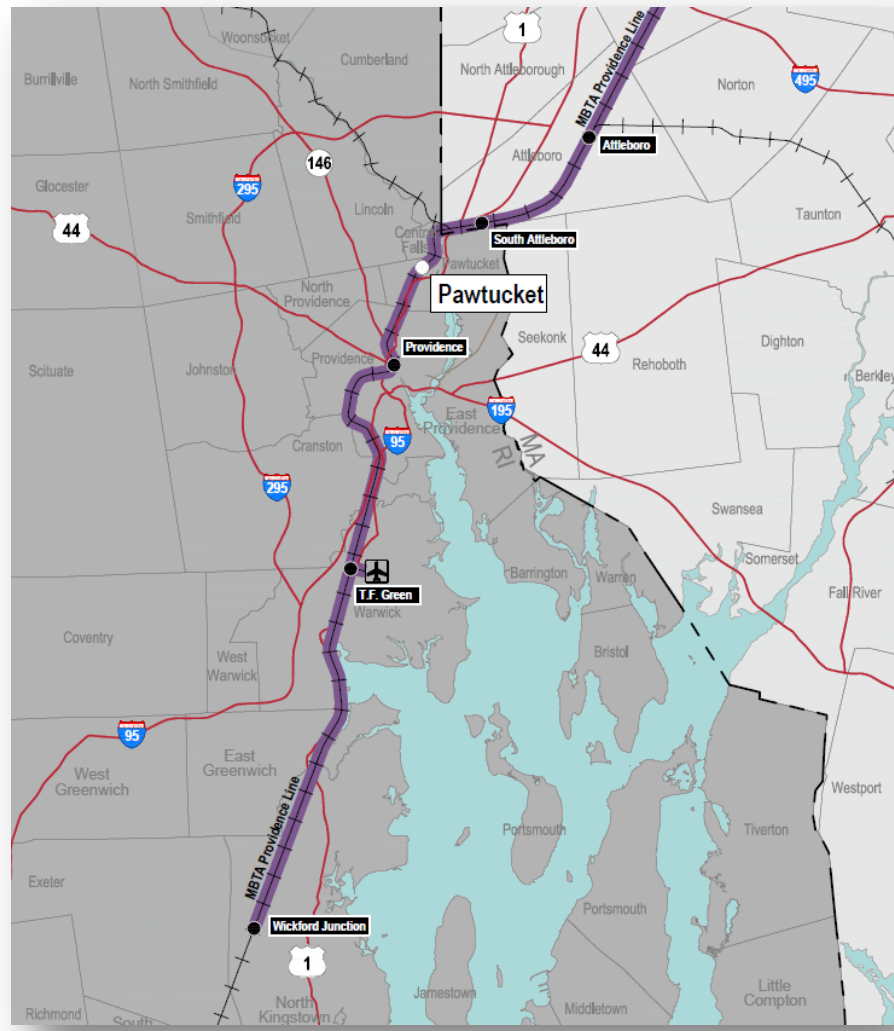
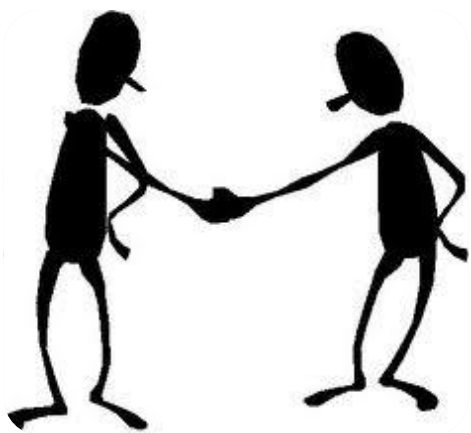


Pawtucket Commuter Rail Station Project

Preliminary Engineering and Environmental Assessment

AGENDA

- Introduction
- History
- Potential Locations
- Project Development
- Contact



AGENDA

Introduction

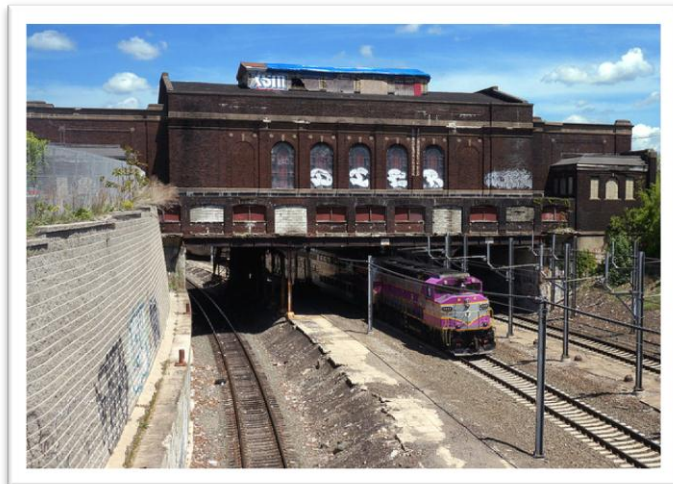
History

Potential Locations

Project Development

Contact

- In 2007, the City in conjunction with Central Falls completes a feasibility study for a commuter rail station identifying the historic site as preferred
- Since the 2007 study, a number of constraints make former site infeasible:
 - ✓ Amtrak requires new commuter rail stations to stop off the mainline;
 - ✓ Station on a curve; cannot provide level boarding
 - ✓ Former site becomes cost prohibitive and is no longer an option
- In 2009, the City undertakes additional analysis of other potential sites.
- In 2010, the project received a \$1.9 million federal transit grant to undertake additional analysis, environmental review, and preliminary engineering.





Pawtucket Commuter Rail Station Project

Preliminary Engineering and Environmental Assessment

AGENDA

- Introduction
- History
- Potential Locations
- Project Development
- Contact





AGENDA

- Introduction
- History
- Potential Locations
- Project Development
- Contact



Alternative 1



Alternative 2



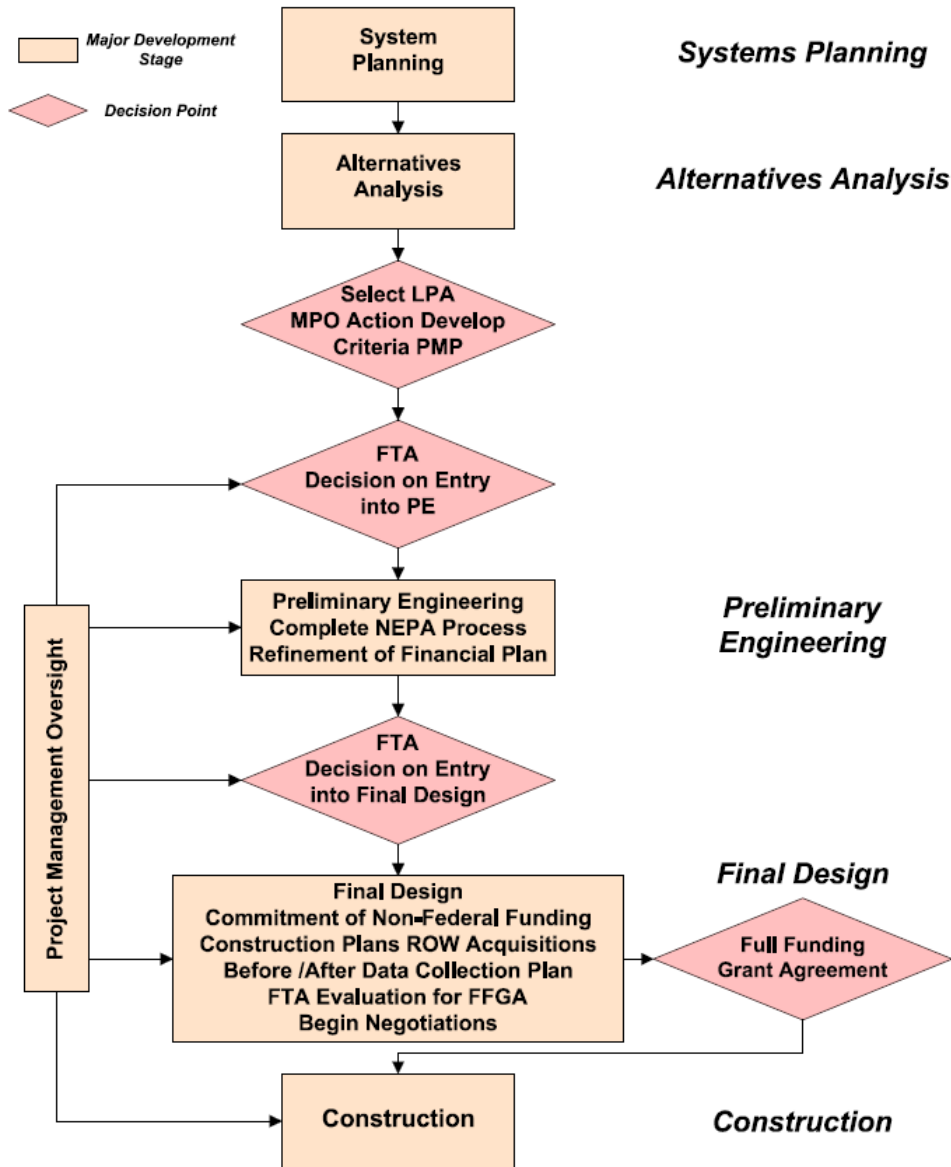


Pawtucket Commuter Rail Station Project

Preliminary Engineering and Environmental Assessment

AGENDA

- Introduction
- History
- Potential Locations
- Project Development
- Contact

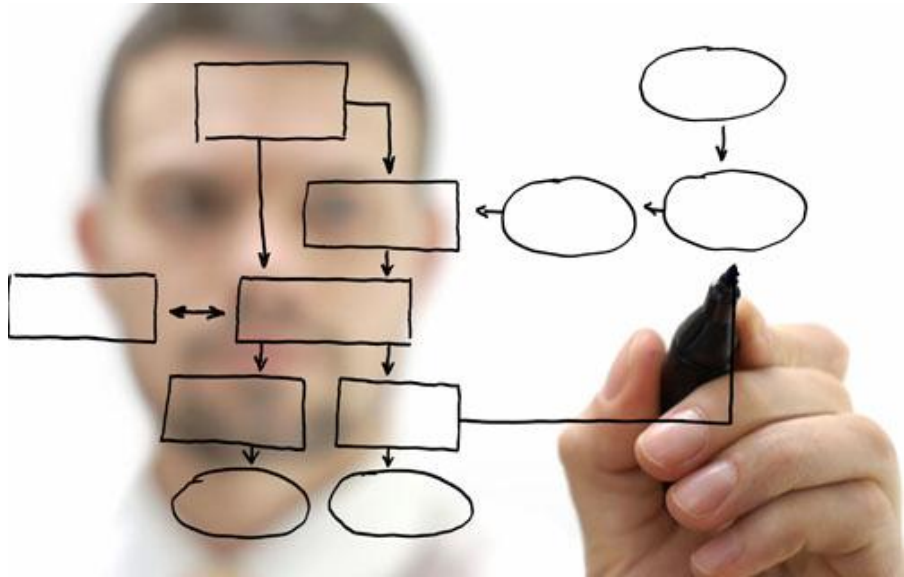




AGENDA

- Introduction
- History
- Potential Locations
- Project Development
- Contact

- 18-month Schedule
- Provide Transportation Planning
 - ✓ Site Selection
 - ✓ Ridership Projections
 - ✓ Service Planning
 - ✓ Impacts to Amtrak, P&W and MBTA service, etc.
- Develop Preliminary Station Design
 - ✓ Parking
 - ✓ Platforms
 - ✓ Access, etc.
- Prepare Environmental Assessment
 - ✓ Noise and Vibration
 - ✓ Air Quality
 - ✓ Environmental Justice, etc.
- Develop TOD Market Analysis
- Stage project for FTA Funding and develop funding plan with federal, state, and local partners





AGENDA

Introduction

History

Potential Locations

Project Development

Contact

PROJECT WEBSITE

www.vhb.com/PawtucketCommuterRail

Rhode Island Department of Transportation

Stephen Devine, Chief

Intermodal Planning

(401) 222-4203

stephen.devine@dot.ri.gov

City of Pawtucket

Barney Heath, Planning Director

Department of Planning and Redevelopment

(401) 724-5200

bheath@pawtucketri.com

