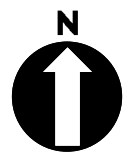


- Boundary of Ranscombe Farm Reserve
- Public Footpath
- Other footpaths
- Farm tracks with no public access
- Roads
- Railways
- Private residences - no access
- Woodland
- Grassland
- Crop fields
- View
- Car Park
- Bus Stop
- Railway Station

Based on the Ordnance Survey Crown copyright 2011. All rights reserved. Ordnance Survey Licence No. 100032779



How to find Ranscombe Farm Reserve



By car

Our main car-park is just off the A228 Sundridge hill, a short distance south of Junction 2 of the M2.

Come off at Junction 2. At the roundabout on the A228, turn right towards Cuxton. After about 200 yards, turn right into the reserve entrance.

With a sat-nav, use the Post Code ME2 1LA. Don't follow it all the way, but stop once you reach the car-park.

There is also free parking at the Medway Council car-park on Albatross Avenue in Strood, close to the junction with Bligh Way. Use Post Code ME2 2XR. From this car-park, walk through the subway under the motorway, then bear slightly left and follow the path through the woodland. Finally, cross the bridge over the railway.

By bus

The 140 and 141 buses run between Chatham and the **Bligh Way Shops**. On the way, they pass Chatham Railway Station and Chatham Bus Station, and go through Rochester and Strood. The services are frequent in the week, and even run on Sundays.

From the bus stop at Bligh Way Shops, continue onward into Albatross Avenue. Pass the car-park, walk through the subway under the motorway, then bear slightly left and follow the path through the woodland. Finally, cross the bridge over the railway.

The 151 between Chatham and West Malling runs through Cuxton. There are stops at our main entrance: ask for **Ranscombe Farm**. Most buses also stop at the end of **Whiteleaves Rise** in Cuxton. From the bus-stop, walk up Whiteleaves Rise, and go under the railway arch.

By train

The nearest railway station is **Cuxton**, which is on the line from Strood to Maidstone West and Paddock Wood. Strood is also on North Kent Coast line from Charing Cross, and on the High Speed route from St Pancras.

From Cuxton Station, walk down Station Road until you reach the A228, then cross the road at the crossing.

From here, the safest route is to follow Bush Road into the village, until you reach the junior school entrance. Opposite the school entrance is a footpath. Follow the footpath, cross Ladywood Road, and continue till you come out onto Charles Drive. Cross Charles Drive, walk up Whiteleaves Rise, and go under the railway arch.

Alternatively, cross Bush Road at its junction with the A228, and head up Sundridge Hill. Bear left into Pilgrims Way (this road has no pavement), and, after a short distance, take the footpath on the left. Follow the footpath and cross the railway at the level-crossing.

Useful contacts

Medway Council public transport pages www.medway.gov.uk/transportandstreets/publictransport.aspx

Traveline South and East www.travelinesoutheast.org.uk 0871 200 2233

National Rail enquiries www.nationalrail.co.uk 0845 748 4950