





Riviera TwinStar Square, Shanghai

## Distinctive shape

Located at Site 2E2-2 Pudong District, Shanghai, Riviera TwinStar Square is a newly completed 200,000 sq m mixed-use project with the addition of two 49-storey office towers to the historic Shanghai Shipyard site. The project is being developed by CITIC Pacific Group and Agriculture Bank of China and China Construction Bank will set their headquarters in the new towers. The design of the office towers forms a gateway in the shape of a ship aligning the axis of slipway and leads to the Celebration Park on the waterfront. The spectacular site fronts the Huangpu River and the historic Bund, and the slipway will be restored for use as a new museum.



### **Design intent**

The towers will be occupied by two different bank headquarters, so the architects designed the symmetrical towers that are all about balance, order, and stability. Their interdependence sends the message of union and respect for each other at once.

Two stone and glass towers will rise in tandem forming a gateway to the Huangpu River. As they face each other, their facades curve dramatically to form an imaginary space that frames the skies and the city skyline. Their nautical symmetry will convey memories of the ships that were once launched from the now relocated Shanghai Shipyards. The architects want the towers to glow from within but designed the inner curves at the center to be lit to emphasize the distinctive shape and monumental scale of the space.

*(All Photos by Rogan Coles)*





location  
**Site 2E2-2 Pudong District, Shanghai, China**

client  
**CITIC Pacific Group**

design architect  
**Arquitectonica**

architect of record  
**East China Architectural Design & Research Institution**

interior designer  
**Arquitectonica**

structural engineer/curtainwall  
**Arup International Consultants (Shanghai)**

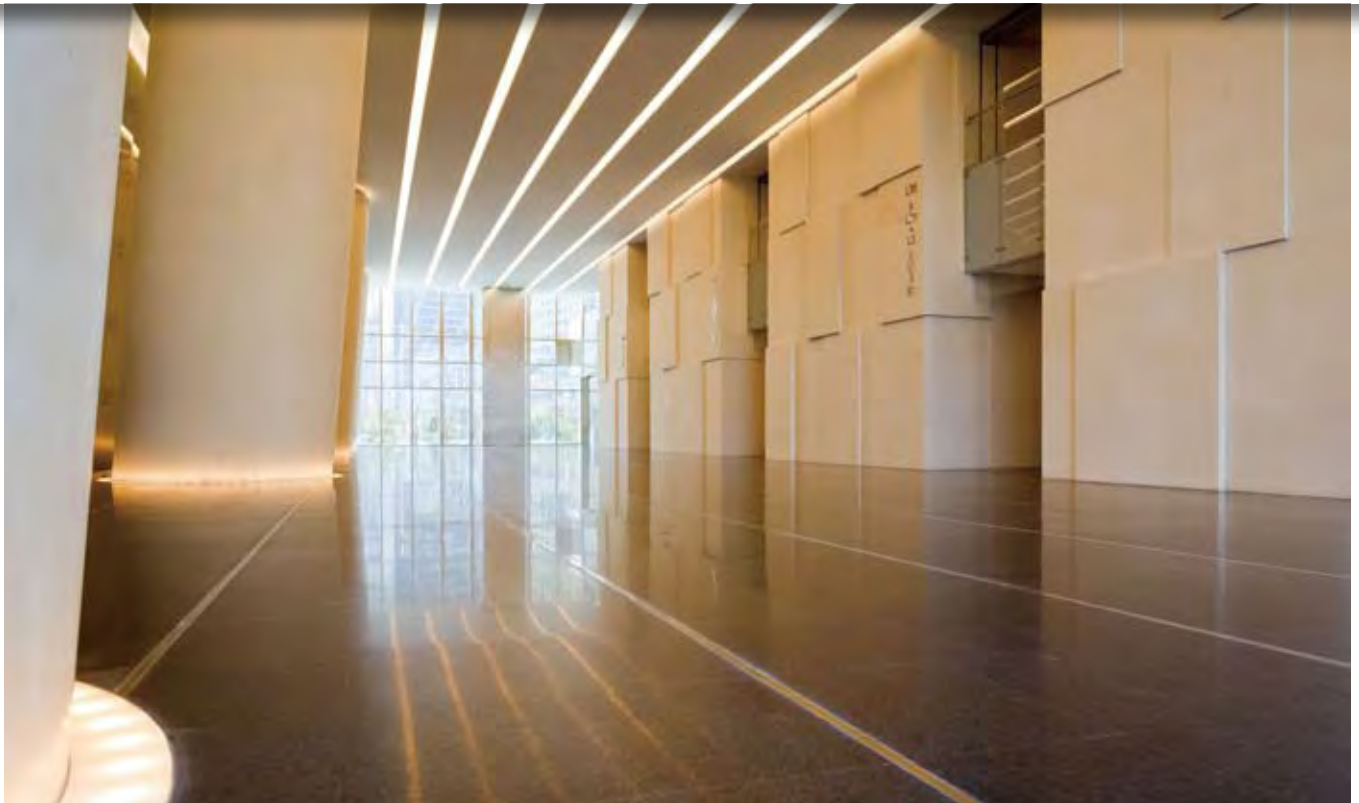
mep  
**J Roger Preston Limited**

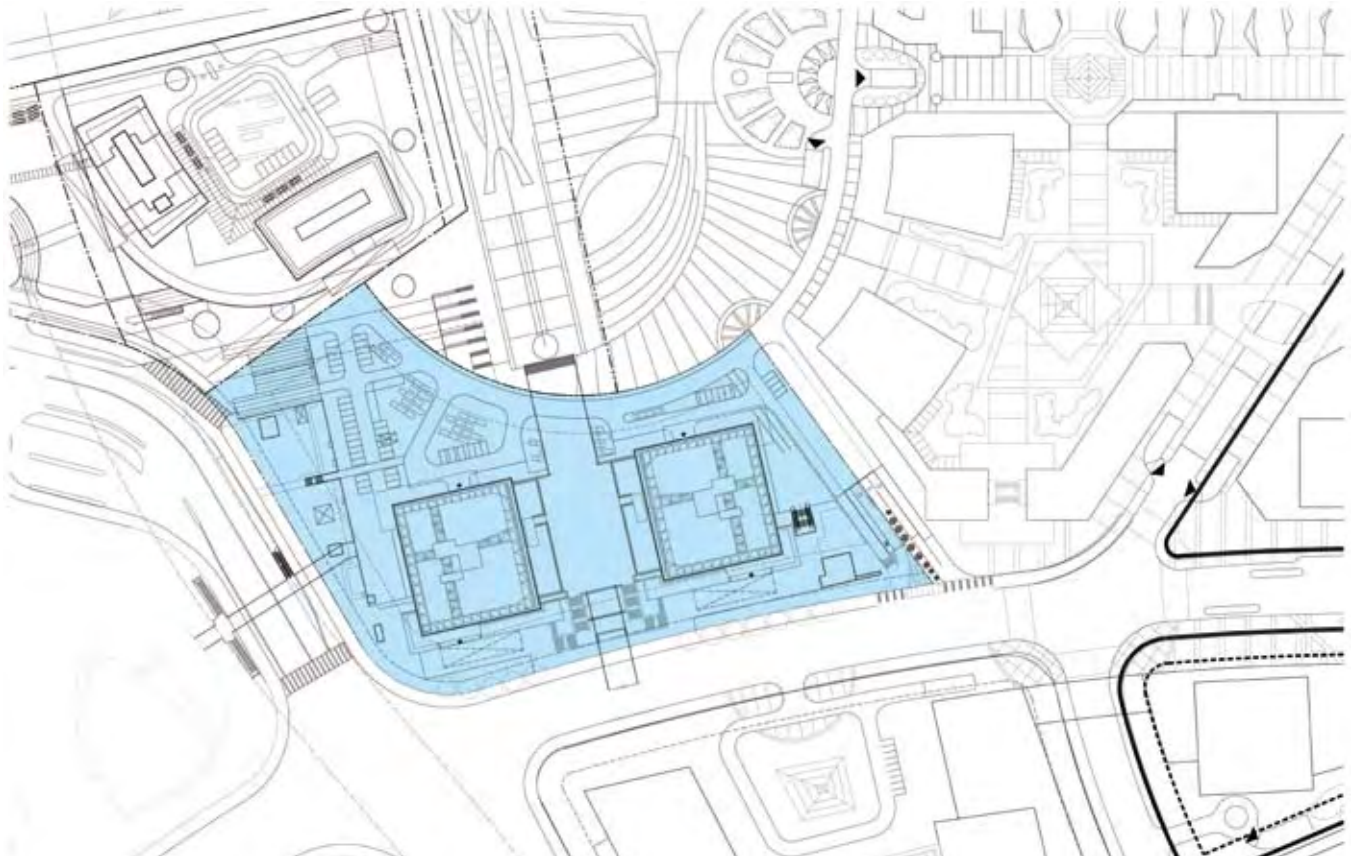
graphics  
**Graphia International Limited**

general contractor  
**Shanghai Construction (Group) General Co**

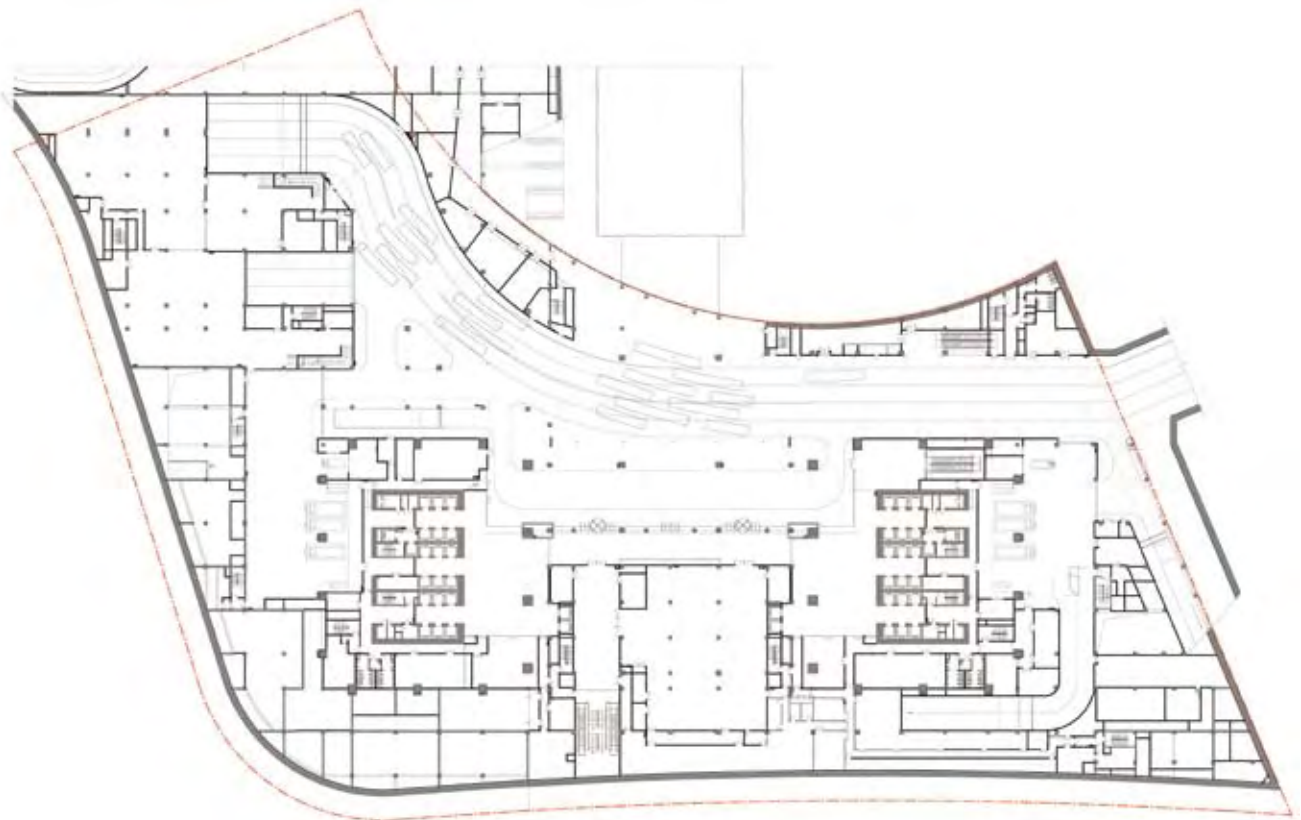
#### Fast Facts

Total area	200,000 sq m
Office Tower 1	100,000 sq m
Office Tower 2	100,000 sq m
Number of stories	49
Height	218 meters
Parking	3 floor basement parking

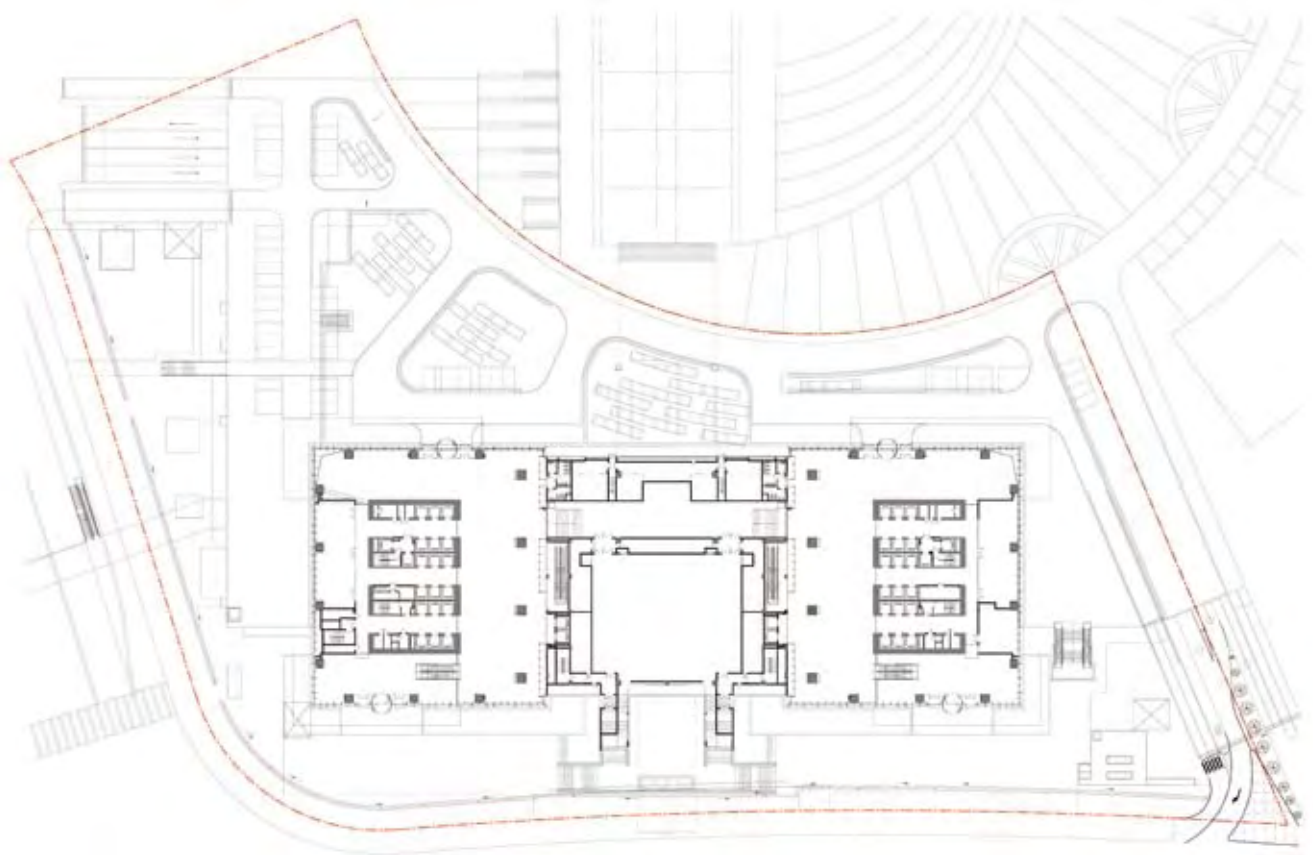




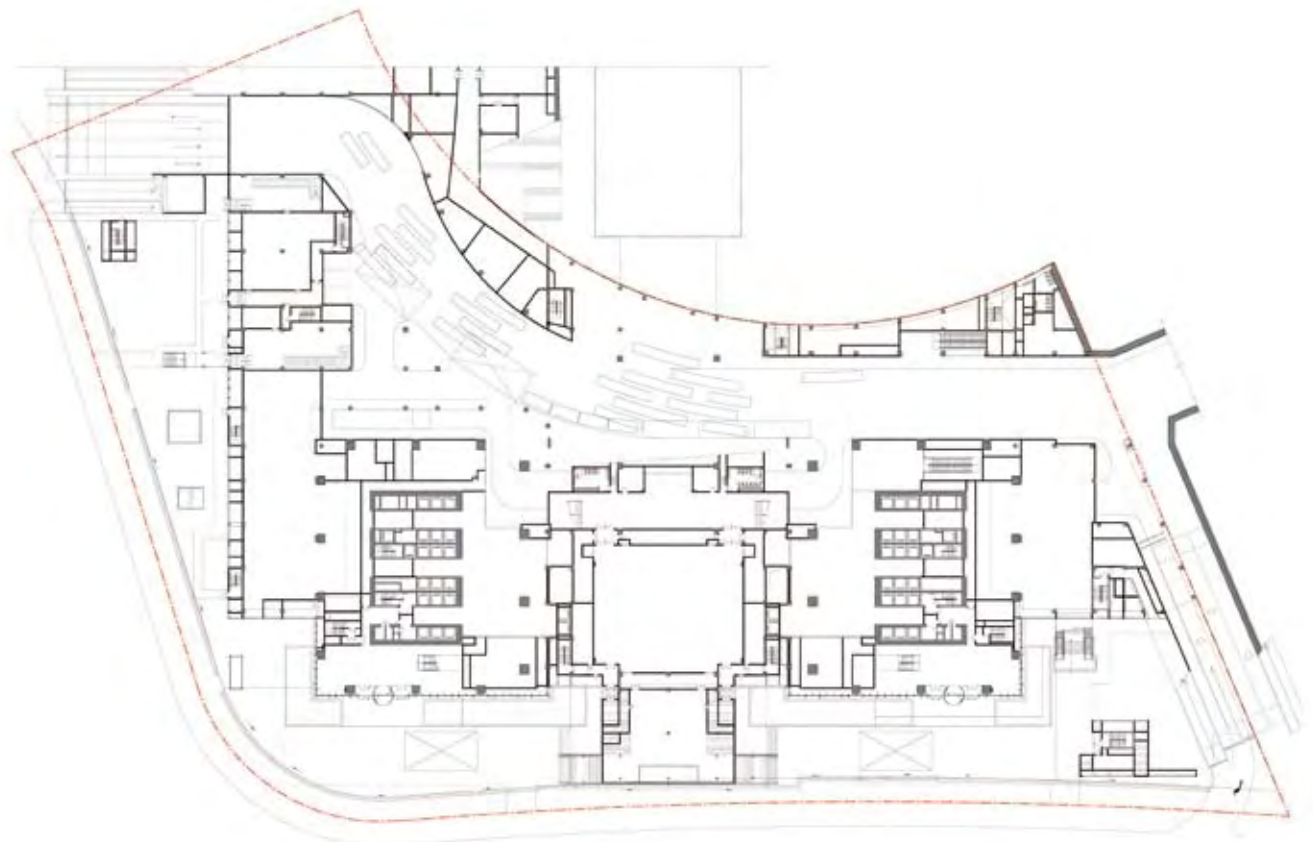
Site plan



Basement 1 floor plan

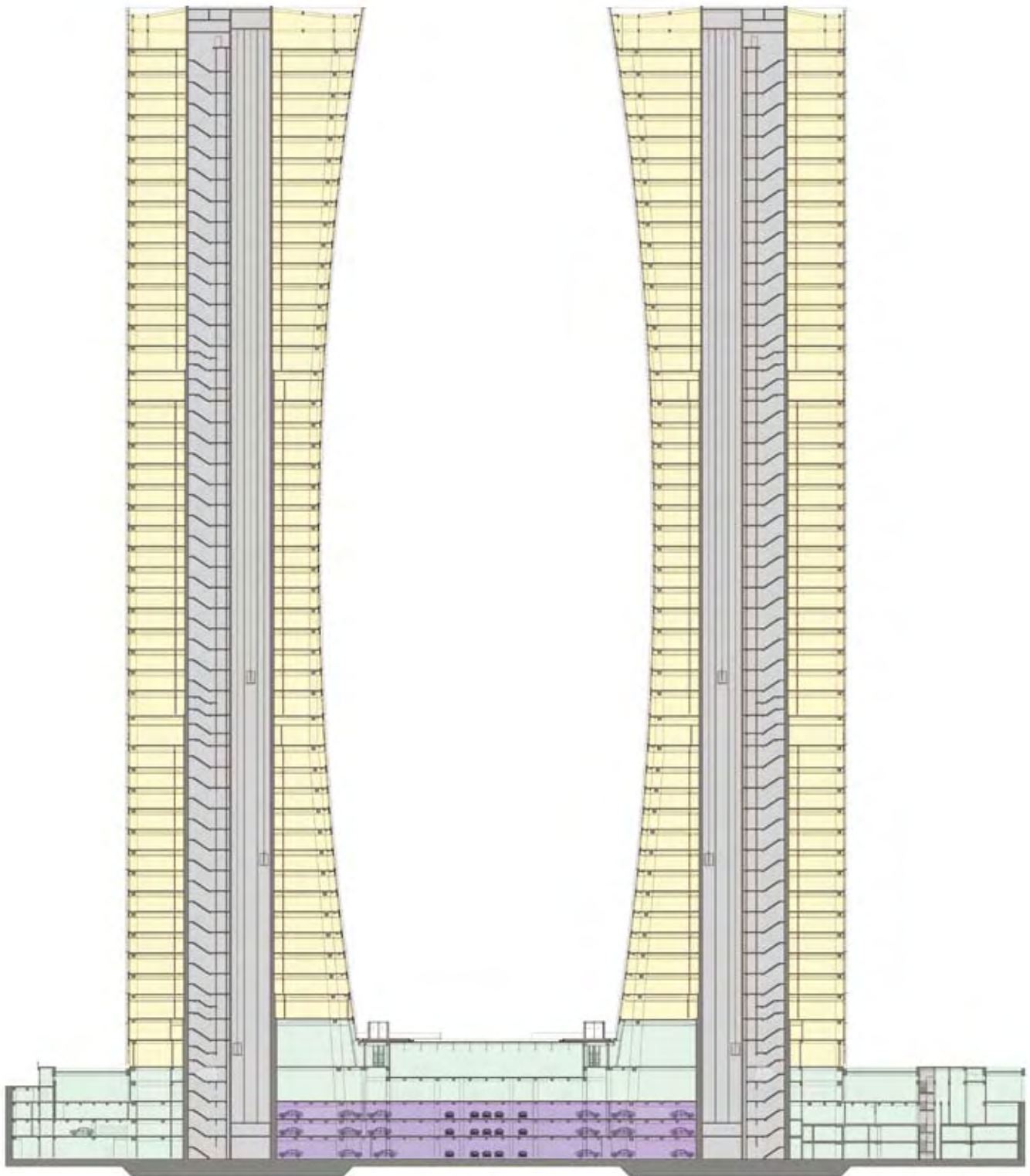


G/F floor plan

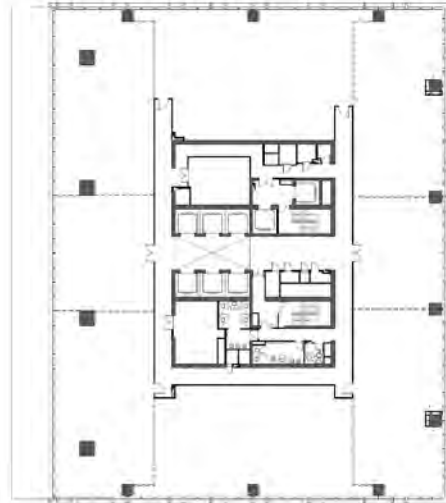
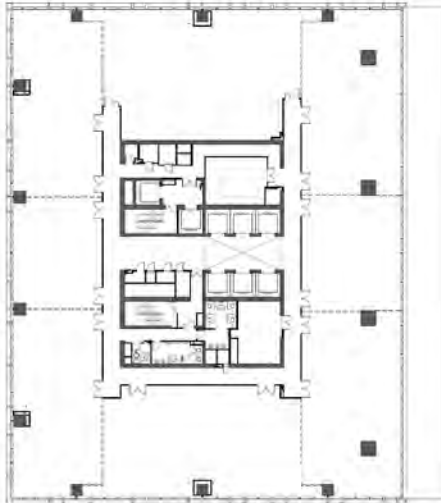


Underground mezzanine floor plan

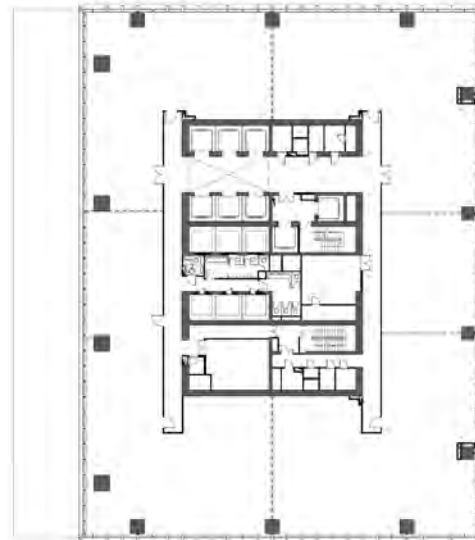




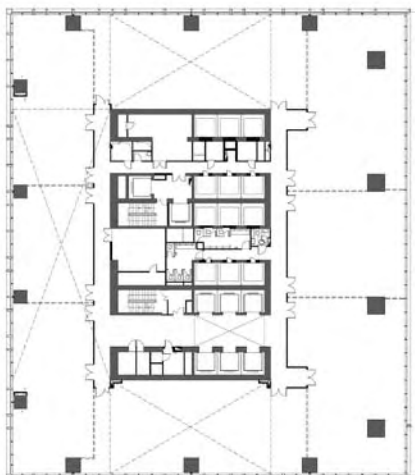
Typical section



Typical floor plan (high zone)



Typical floor plan (middle zone)



Typical floor plan (low zone)