



BYU Women's Basketball

Athletic Communications • 30 Smith Fieldhouse • Provo, Utah • 84602
801-422-8948 office • 801-422-0633 fax • website: www.byucougars.com

Women's Basketball Contact: Norma Collett • 801-422-4908 office • 801-372-0989 cell
• email: norma_collett@byu.edu

BYU Women's Basketball - (02/23/12)

Game #29:BYU (23-5, 11-3) vs. Santa Clara (11-16,4-10) • Game #30:BYU (23-5, 11-3) @ No. 21 Gonzaga (24-4,13-2)

2011-12 SCHEDULE/Results

Date	Opponent	Time/Results
Nov. 3	Western Oregon, Exh.	W 90-61
Nov. 4	Dixie State College, Exh.	W 91-54
Nov. 11	Duke (BYUtv)	L 55-61
Nov. 14	@ Tulsa	W 64-61
Nov. 16	@ Kansas State	L 46-59
Nov. 19	@ Weber State	W 84-67
Nov. 23	Wisconsin (BYUtv)	W 77-59
Nov. 26	Eastern Washington (BYUtv)	W 77-58
Nov. 29	@ BYU-Hawaii	W 88-27
Dec. 1	vs. Arizona @ BYU-H	W 82-73
Dec. 3	vs. Syracuse @ BYU-H	W 83-59
Dec. 8	Southern Utah (BYUtv)	W 82-49
Dec. 10	Utah (BYUtv)	W 63-58
Dec. 17	@ Utah State	W 73-65
Dec. 22	Nevada (BYUtv)	W 84-53
Dec. 31	@ St. Mary's*	L 48-54
Jan. 2	@ Portland*	W 79-53
Jan. 5	LMU* (BYUtv)	W 80-47
Jan. 7	@ San Francisco*	W 76-67
Jan. 12	Pepperdine* (BYUtv)	W 80-56
Jan. 14	@ San Diego*	W 62-53
Jan. 19	@ LMU*	W 72-48
Jan. 21	Portland* (BYUtv)	W 76-55
Jan. 25	@ Seattle University	W 69-57
Jan. 28	@ Santa Clara*	W 74-64
Feb. 2	@ Pepperdine*	L 49-61
Feb. 4	St. Mary's* (BYUtv)	W 83-47
Feb. 9	Gonzaga* (BYUtv)	W 70-40
Feb. 16	San Francisco*(BYUtv)	L 64-71
Feb. 18	San Diego* (BYUtv)	W 64-50
Feb. 23	Santa Clara* (BYUtv)	7 p.m.
Feb. 25	@ Gonzaga*	2 p.m.
Feb. 29-Mar. 5	@ WCC Tournament	TBA

Home Games played at Marriott Center
All Times Local to Site *Indicates WCC Games

2011-12 BASKETBALL STAFF

Head Coach: Jeff Judkins (Utah '78)
Office Phone: 801-422-8035
Best time to call: 9-10 a.m., daily
Assistant Coach: Chris Boettcher (BYU, '94)
Office Phone: 801-422-8155
Email address: chris_boettcher@byu.edu
Assistant Coach: Melinda Bendall (BYU, '07)
Office Phone: 801-422-1548
Email address: melinda_bendall@byu.edu
Assistant Coach: Ray Stewart (UVU, '00)
Office Phone: 801-422-7682
Email address: ray_stewart@byu.edu
Dir. of Operations: Wendy Anae (CS Fullerton, '90)
Office Phone: 801-422-2074

FINAL TWO WCC GAMES

Game #29 - BYU (23-5, 11-3) vs. Santa Clara (11-16, 4-10), 2/23/12	
Tip Off:	7 p.m. MT
Arena:	Marriott Center
Live Television:	BYUtv, Robbie Bullough & Kristen Kozlowski
Live Radio:	Simulcast on BYU Radio
Live Stats:	byucougars.com
Series History:	BYU leads the series 3-1
Last Meeting:	The Cougars beat SCU 74-64 in Santa Clara on 1/28/12

Game #30 - BYU (23-5, 11-3) @ No. 21 Gonzaga (24-4, 13-2), 2/25/12	
Tip Off:	2 p.m. PT
Arena:	McCarthy Athletic Center
Live Radio:	TY Brandenburg, BYU Radio, Sirius XM 143 & byuradio.org
Live Stats:	byucougars.com
Series History:	BYU leads the series 4-3
Last Meeting:	The Cougars won 62-53 in San Diego on 1/14/12

In second place in the latest WCC standings, BYU women's basketball (23-5, 11-3) competes in the last two regular season WCC games.

On Thurs. Feb. 23 the Cougars host Santa Clara (11-16, 4-10) in a 7 p.m. tip off.

The team then travels to Spokane on Sat. Feb. 25 for a showdown with Gonzaga (24-4, 13-2). That game tips off at 2 p.m., PT.

Thursday night's game airs live worldwide on BYUtv. Saturday afternoon's game airs live on BYU Radio

GAME PROMOTION - SANTA CLARA: Senior Day Celebration

2011-12 BYU Probable Starters

No.	Name	Pos.	Ht.	Yr.	PPG	RPG
32	Dani Peterson	F	6-1	Sr	6.4	5.0
35	Kristen Riley	C	6-3	Sr	11.6	7.8
33	Haley Steed	G	5-4	Sr	8.5	4.9
04	Kim Parker	G	5-11	So	10.4	3.2
21	Lexi Eaton	G	5-10	Fr	10.1	2.9

2011-12 Bench Players

No.	Name	Pos.	Ht.	Yr.	PPG	RPG
05	Jennifer Hamson	C	6-7	So	8.9	5.2
12	Stephanie Vermunt	G/F	6-0	So	6.4	2.4
02	Stephanie Rovetti	G	5-6	Fr/RS	2.6	1.1
11	Xojian Harry	G	5-11	Fr	2.6	0.6
41	Morgan Bailey	F	6-2	Fr/RS	2.1	1.0
03	Ashley Garfield	G	5-11	Fr	2.1	1.0
10	Alexis Kaufusi	F	6-1	Jr	1.6	1.3
30	Kylie Brown^	G	5-7	Fr	0.8	0.1
14	Mackenzie Nielson	G/F	6-0	Fr	0.2	0.7
01	Sadi Dias	G	5-7	Fr	0.0	0.0
50	Valerie Nawahine^	G	5-7	Fr	0.0	0.5
55	Kari Ryser^	G	5-8	So	0.0	0.5

^ Indicates walk-on for 2011-12.



BYU 2011-12 Quick Facts

University Information

Location: Provo, Utah
 Founded: Oct. 15, 1875
 Elevation: 4,553 feet
 Enrollment: 33,278
 Nickname: Cougars
 Mascot Cosmo
 Colors: Dark Blue and White

Team Information

2011-12 Overall Record: 23-5, 11-3
 2010-11 Overall Record: 25-9
 2010-11 MWC Record/Finish: 15-1/1st
 Coach Judkins Overall Record: 228-113/10
 Letterwinners R/L: 7/4
 Starters R/L: 2/3
 Newcomers: 5

Roster Breakdown

Letterwinners Returning: (7)

Haley Hall – 5-4 Sr. G (8.5 ppg, 3.3 rpg)
 Jennifer Hamson – 6-7 Fr. C (7.7 ppg, 5.1 rpg)
 Alexis Kaufusi – 6-1 So. F (4.9 ppg, 2.8 rpg)
 Kim Parker – 5-11 Fr. G (5.0 ppg, 2.5 rpg)
 Dani Peterson – 6-1 Jr. F (4.0 ppg, 3.1 rpg)
 Kristen Riley – 6-3 Sr. F (8.9 ppg, 5.4 rpg)
 Stephanie Vermunt – 6-0 Fr. G/F (3.4 ppg, 1.5 rpg)

Letterwinners Lost: (4)

Marie Beck - 5-8 Sr. G (0.2 ppg, 0.4 rpg)
 Mindy Bonham – 5-10 Sr. G (13.0 ppg, 3.7 rpg)
 Jazmine Foreman - 5-5 Sr. G (5.9 ppg, 2.6 rpg)
 Coriann Fraughton - 5-5 Sr. G (11.5 ppg, 7.2 rpg)

Starters Returning: (2)

Haley Hall – 5-4 Sr. G (8.5 ppg, 3.3 rpg)
 Jennifer Hamson – 6-7 Fr. C (7.7 ppg, 5.1 rpg)

Starters Lost: (3)

Mindy Bonham – 5-10 Sr. G (13.0 ppg, 3.7 rpg)
 Jazmine Foreman - 5-5 Sr. G (5.9 ppg, 2.6 rpg)
 Coriann Fraughton - 5-5 Sr. G (11.5 ppg, 7.2 rpg)

Returning Redshirts: (2)

Morgan Bailey – 6-2 Fr. C, Orem, UT/Timpanogos HS
 Stephanie Rovetti – 5-6 Fr. G, Reno, NV/Reno HS

Newcomers: (5)

Sadi Dias - 5-7 Fr. G, St. George, UT/Pine View HS
 Lexi Eaton - 6-0 Fr. G/F, Mapleton, UT/Springville HS
 Ashley Garfield - 5-11 Fr. G, Morgan, UT/Morgan HS
 Xojian Harry - 5-11 Fr. G, Bountiful, UT/Viewmont HS
 MacKenzie Nielson - 6-0 Fr. F, Springville, UT/Springville HS

2011-12 TEAM SUMMARY

- ✓ Shooting from field: (.439, 737-1679)
- ✓ Shooting from three-point line: (.341, 186-546)
- ✓ Shooting from free-throw line: (.730, 344-471)
- ✓ Average points per game: 71.6
- ✓ Average rebounds per game: 40.6
- ✓ Average assists per game: 19.0
- ✓ Average steals per game: 9.5
- ✓ Average blocks per game: 6.0
- ✓ Average turnovers per game: 15.8

2011-12 PLAYER SUMMARY

- ◆ Leading scorer: Senior Kristen Riley - averages 11.6 points
- ◆ Leading rebounder: Riley - averages 7.8 boards per game
- ◆ Assist & Steals leader: Senior co-captain Haley Steed - 196 and 60 respectively.
- ◆ Top blocker: Jennifer Hamson - 71 total
- ◆ Best field goal percentage: Jennifer Hamson - (.571, 88-154)
- ◆ Best free throw percentage: Kim Parker - (.845, 49-58)
- ◆ Best 3-pt field goal percentage: Stephanie Vermunt - (.470, 39-83)

TEAM CAPTAINS SELECTED

Seniors Haley Steed and Kristen Riley were chosen by their teammates as co-captains for the 2011-12 season. It marks Steed's fourth straight co-captain selection.

WINNINGEST COACH IN BYU HISTORY

☐ BYU head coach Jeff Judkins became the all-time winningest coach in BYU women's basketball history, picking up his 220th career win when the Cougars defeated Pepperdine, 80-56 Thurs. Jan. 12, 2012. Judkins record on that night was 220-111 (.665) in his 11th season as head coach of the women's program. He passed former BYU coach Courtney Leishman (1977-89) who finished at BYU with a 219-124 (.638) record.

RECORD BREAKING PLAYERS

- ☐ Haley Steed has recorded 518 assists as of 02/20/12, which places her in second place all-time. She needs 95 to tie for first place with Valerie Cravens who dished out a career-record 613.
- ☐ Steed has 208 steals to date for eighth place all-time and needs 21 to tie for seventh place with Karina Zapata's career high 229.
- ☐ Steed has made 176 3-pointers as of 02/20/12 putting her in fifth place overall. She needs four to tie for fourth place with Behka Stafford's career best 180.
- ☐ Kristen Riley has 76 blocks as of 02/20/12 and needs three to tie for fifth place all-time with Cathy Nixon's 79.
- ☐ Riley has grabbed 693 rebounds as of 02/20/12, putting her in seventh place overall. She needs 22 to tie for sixth place with Danielle Cheesman who ended her career with a total of 715 rebounds.
- ☐ Riley has a total of 992 points scored as of 02/20/12, and needs eight to become BYU's 22nd player to reach 1,000 points in her career.

AP Top 25 Poll, 2/20/12 - Week 15

Rk. School

1. Baylor (27-0)
2. Stanford (24-1)
3. Notre Dame (25-2)
4. Connecticut (24-3)
5. Miami, Fla. (24-3)
6. Maryland (23-4)
7. Duke (22-4)*
8. Ohio State (23-3)
9. Delaware (24-1)
10. Tennessee (20-7)
11. Penn State (21-5)
12. Wisconsin-Green Bay (23-1)
13. Kentucky (21-5)
14. Texas A&M (19-6)
15. Georgetown (21-6)
16. Louisville (19-7)
17. Georgia Tech (20-7)
18. Georgia (20-7)
19. St. Bonaventure (25-2)
20. St. John's (18-8)
21. DePaul (20-7)
22. Purdue (19-8)
23. Nebraska (20-6)
24. Rutgers (18-8)
25. Gonzaga (24-4)

*Denotes BYU Opponent
Receiving Votes: BYU (15)

USA Today ESPN Div. I Top 25 Coaches' Poll. 2/21/12 - Week 15

Rk. School

1. Baylor (27-0)
2. Stanford (24-1)
3. Notre Dame (26-2)
4. Connecticut (24-3)
5. Miami, Fla. (24-3)
6. Maryland (23-4)
7. Duke (22-4)*
8. Delaware (24-1)
9. Tennessee (20-7)
10. Kentucky (22-5)
11. Texas A&M (19-6)
12. Wisconsin-Green Bay (23-1)
13. Georgetown (21-6)
14. Ohio State (23-4)
15. Penn State (22-5)
16. Georgia (20-6)
17. Louisville (19-8)
18. DePaul (20-7)
19. Georgia Tech (20-7)
20. Rutgers (18-8)
21. Gonzaga (24-4)*
22. St. Bonaventure (25-2)
23. Nebraska (20-6)
24. Vanderbilt (20-7)
25. St. John's (18-8)

*Denotes BYU Opponent
Receiving Votes: Kansas St. (2)

□ Riley has played in a total of 124 games as of 2/20/12, which puts her in a three-way tie for fifth place all-time with Cougar standouts Mallery Carling (Gillespie), Jeanette Weston and Jackie McBride (Bean).

□ As of 02/20/12, 6-7 sophomore center Jennifer Hamson has tallied 116 blocks and needs nine to tie for fourth place all-time with the 125 recorded by Jill Adams.

2011-12 SEASON HONORS

Jennifer Hamson - Primetime Performers Weekly Honor Roll by CollegeSports360.com on 2/15/12.

Jennifer Hamson - Madness West Coast Women's Basketball Player of the Week by College Sports Madness on 2/13/12.

Kim Parker - WCC Player of the Week, 2/13/12

Kim Parker - WCC Player of the Week, 12/5/11

Kristen Riley - WCC Player of the Month for January 2/8/12

Kristen Riley - WCC Player of the Week 1/30/12

COUGS BREAK INTO TOP 25

On Feb. 13, the Cougar team returned to the AP Top 25 at No. 23 after its 70-40 upset victory over Gonzaga on 2/9/12.

Entering the week of Feb. 6, BYU fell out of the top-25 AP Poll after the loss at Pepperdine on 2/2/12. However, they did receive (28) votes.

The week of Jan. 23 and with an 18-3, 7-1 mark the team broke into the AP Poll with a No. 23 ranking. They received votes (1) the week of 1/16/12 as well as the week of 12/26/11 when the Cougars were 11-2.

The week of 12/26/11 they also received one vote in the USA Today ESPN Coaches Poll. On Jan. 24 they got (5) votes in the USA Today ESPN Coaches Poll. In the poll for the week of Jan. 31 the team got (8) votes. In the poll released on Feb. 7 they got (4) votes and on Feb. 14 they had (18) votes.

LAST TIME IN THE POLLS

The last time that BYU was ranked in the polls was in the 2006-07 season.

On Monday, Nov. 13, 2006, the Cougars were ranked No.24

On Friday, Nov. 17, 2006, the Cougars were ranked No. 18

On Wednesday, Nov. 27, 2006, the Cougars were ranked No. 23

On Saturday, Dec. 2, 2006, the Cougars were ranked No. 22

WIN STREAK

BYU went on a nine-game win streak, before losing on the road at Pepperdine on 2/2/12. Prior to the loss Thursday night, they had won eight straight league games. Earlier this season the Cougars won 10 games in a row, which was the longest current winning streak in the West Coast Conference before losing its debut game competing in the WCC, a 48-54 decision at Saint Mary's.

Last season BYU went on a 12-game win streak during the 2011 Mountain West Conference race.

The longest win streak in the program's history is 15 games played from 12/31/92 to 2/26/93.

BYU WOMEN'S BASKETBALL

2011-12 NCAA Ranking Summary - (as of 02/20/12)

Category -Team	Rank
Assists Per Game	4th
Assist Turnovers Ratio	6th
Blocked Shots	9th
Field-Goal Percentage Defense	13th
Scoring Margin	15th
Field-Goal Percentage	20th
Won-Loss Percentage	21st
Scoring Offense	31st
Three-Point Field Goals Per Game	37th
Free-Throw Percentage	49th
Three-Point Field Goal Percentage	50th
Three-Point Field Goal Defense	50th

Category - Player	Rank
Assist Turnover Ratio - H. Steed	5th
Assists Per Game - H. Steed	6th
Blocked Shots Per Game - J.Hamson	17th
Assist Turnover Ratio - K. Parker	50th

2011-12 BYU record when...

Category	Record
BYU leads at the half	19-0
Opponent leads at the half	3-5
Score is tied at the half	1-0
Game goes into overtime	0-0
BYU shoots 50% or better	7-0
Opponent shoots 50% or better	0-0
BYU makes five or more 3-pointers	19-2
Opponent makes five or more 3-pointers	8-3
BYU outrebounds opponent	16-3
Opponent outrebounds BYU	4-2
Rebounds are equal	3-0
BYU has 16 and under turnovers	14-2
Opponent has 16 and under turnovers	10-3
BYU has 17-20 turnovers	7-1
Opponent has 17-20 turnovers	6-2
BYU has more than 20 turnovers	2-2
Opponent has more than 20 turnovers	8-0

Double Doubles

Player	2011-12	Career
#5 Hamson	14 pts/10 rbs vs. Portland, 1/21/12	
	10 pts/10 rbs vs. Nevada, 12/22/11	
		16 pts/13 rbs @ TCU, 1/19/11
#10 Kaufusi		12 pts/11 rbs vs. SUU, 11/24/09
		10 pts/11 rbs vs. UNM, 1/27/10
#32 Peterson	14 pts/10 rbs vs. SY @ Laie, 12/3/11	same
#33 Steed	11 pts/14 asts vs. Pepperdine, 1/12/12	
	12 pts/15 rbs vs. No. 8 Duke, 11/11/11	
		19 pts/11 asts vs. USU, 3/19/11
#35 Riley	12 pts/13 rbs vs. San Diego, 2/18/12	
	16 pts/11 rbs vs. San Francisco, 2/16/12	
	11 pts/10 rbs vs. No. 18 Gonzaga, 2/9/12	
	15 pts/13 rbs @ Pepperdine, 2/2/12	
	17 pts/11 rbs @ Santa Clara, 1/28/12	
	16 pts/10 rbs @ Seattle, 1/25/12	
	22 pts/10 rbs @ LMU, 1/19/12	
	17 pts/11 rbs @ St. Mary's, 12/31/11	
	15 pts/12 rbs vs. AZ @ Laie, 12/1/11	
		11 pts/10 rbs vs. USC, 3/23/11
	13 pts/10 rbs vs. USU, 11/23/10	
	16 pts/11 rbs vs. SDSU, 1/23/10	
	12 pts/10 rbs vs. TCU, 3/6/10	

TEAM HIGHLIGHTS/NOTABLES (2011-12)

- ▶ Coach Judkins record in home openers stands at 9-2 after the 55-61 loss to No. 8 Duke on 11/11/11.
- ▶ With the win over Pac-12 opponent and in-state rival Utah, coach Judkins improved his record against the Pac-12 to 13-7.
- ▶ In 19 of the 28 games played to date, the Cougars have outrebounded their opponents:
 - vs. Duke, 41-36
 - @ Tulsa, 41-38
 - @ Weber State, 43-36
 - vs. Eastern Washington, 49 -43
 - @ BYU-H, 46-34
 - vs. SUU, 54-49
 - @ Utah State, 45-30
 - vs. Nevada, 40-32
 - @ Portland, 45 -36
 - vs. LMU, 42-25
 - @ San Francisco, 41-33
 - vs. Pepperdine, 42-31
 - @ LMU, 38-28
 - vs. Portland, 42-37
 - @ Santa Clara, 43-32
 - @ Pepperdine, 36-34
 - vs. Gonzaga, 44-37
 - vs. San Francisco, 51-39
 - vs. San Diego, 44-36
- ▶ In three of the 27 games played to date, the Cougars and their opponents finished the game tied in rebounds, vs. Utah 31 each, vs. Arizona both had 35 and vs. Syracuse with 36 a piece.
- ▶ In the home game vs. Saint Mary's on 2/4/12 the Cougars were outrebounded by eight 43-35, just the six time on the year that an opponent grabbed more boards. In WCC play, there's been two games when BYU has been outrebounded by a league team (@ San Diego, 36-40) and (@ Saint Mary's, 31-43).
- ▶ In the assists category, BYU has dished out more than its opponents in all but one game. At Kansas State the assists were even 11 each.
- ▶ There were 2,553 fans cheering on BYU in the game against No. 8 Duke, the largest home crowd since the Cougars played No. 1 UConn in the 2008-09 season.
- ▶ Team's best field goal percentage: (.593, 35-59) vs. Nevada, 12/22/11.
- ▶ Team's best 3-pt field goal percentage: (.524, 11-21) vs. Arizona, at Hukilau Inv., on 12/1/11.
- ▶ Team's best free throw percentage: (.839, 26-31) at Weber State, 11/19/11. They made all five attempts in the game at Kansas State on 11/16/11.
- ▶ Most 3-pointers made: 11 three times @ Portland, vs. Arizona and vs. Syracuse , at Hukilau Invitational.
- ▶ Most rebounds: 54 vs. Southern Utah, 12/8/11.
- ▶ Most assists: 28 twice, vs. Saint Mary's on 2/4/12 and vs. Nevada, on 12/22/11.
- ▶ Most steals: 29 vs. BYU-Hawaii, at Hukilau Inv., on 11/29/11.
- ▶ Most blocked shots: 15 vs. Southern Utah, 12/8/11.
- ▶ Least number of turnovers: 7 vs. Utah, 12/10/11
- ▶ Four players score double figures in points: (6) times
 - vs. Syracuse on 12/3/11 at Hukilau Invitational - Parker (22), Peterson (14), Eaton (10), Steed (10)
 - vs. Arizona on 12/1/11 at Hukilau Invitational - Parker (25), Riley (15), Hamson (12), Steed (10)
 - @ Utah State on 12/17/11 - Peterson (14), Eaton (12), Vermont (12), Parker (11)
 - vs. Nevada on 12/22/11 - Riley (17), Parker (11), Eaton (10), Hamson (10)
 - vs. Pepperdine on 1/12/12 - Eaton (15), Hamson (13), Vermont (12), Steed (11)
 - vs. San Diego on 2/18/12 - Steed (14), Hamson (14), Riley (12), Eaton (11)
- ▶ Five players scoring in double figures: (1) at Santa Clara on 1/28/12 - Riley (17), Hamson (16), Peterson (11), Parker (10), Eaton (10).

BYU WOMEN'S BASKETBALL

PAGE 6

2011-12 BYU Numerical Roster

No.	Name	Pos.	Ht.	Cl.	Exp.	Hometown/Previous School
1	Sadi Dias	G	5-7	Fr	HS	St. George, UT/Pine View HS
2	Stephanie Rovetti	G	5-6	Fr/RS	HS	Reno, NV/Reno HS
3	Ashley Garfield	G	5-11	Fr	HS	Morgan, UT/Morgan HS
4	Kim Parker	G	5-11	So	1V	Heber City, UT/Wasatch HS
5	Jennifer Hamson	C	6-7	So	1V	Lindon, UT/Pleasant Grove HS
10	Alexis Kaufusi	F	6-1	Jr	2V	Provo, UT/Timpview HS
11	Xojian Harry	G	5-11	Fr	HS	Bountiful, UT/Viewmont & Woods Cross HS
12	Stephanie Vermunt	G/F	6-0	So	1V	Airdrie, Alberta, Canada/Bert Church HS
14	Mackenzie Nielson	F	6-0	Fr	HS	Springville, UT/Springville HS
21	Lexi Eaton	G/F	5-10	Fr	HS	Mapleton, UT/Springville HS
30	Kylie Brown^	G	5-7	Fr	HS	Grangeville, ID/Grangeville HS
32	Dani Peterson	F	6-1	Sr	3V	Salt Lake City, UT/Skyline HS
33	Haley Steed	G	5-4	Sr	3V	Syracuse, UT/Clearfield HS
35	Kristen Riley	C	6-3	Sr	3V	San Clemente, CA/San Clemente HS
41	Morgan Bailey	C	6-2	Fr/RS	HS	Orem, UT/Timpanogos HS
50	Valerie Nawahine^	G	5-7	Fr	HS	La Jolla, CA/Cathedral Catholic HS & La Jolla HS
55	Kari Ryser^	G	5-8	So	HS	Tarzana, CA/Calabasas HS

^ Indicates Walk-Ons for 2011-12

Head Coach: Jeff Judkins

Assistant Coaches: Chris Boettcher, Melinda Bendall, Ray Stewart

Director of Basketball Operations: Wendy Anae

Athletic Trainer: Jaime Carpenter

PRONUNCIATION GUIDE

#1 - Sadi Dias (dee-ez)

#11 - Xojian Harry (zho-zhon)

#12 - Stephanie Vermunt (ver-muh-nt)

#30 - Kylie Brown (kye-lee)

#50 - Valerie Nawahine (nah-wah-hee-nay)

#55 - Kari Ryser (car-ee rise-er)



Head Coach: Jeff Judkins
Overall Record: 228-113/10
2011-12: 23-5, 11-3

Head coach Jeff Judkins enters his 11th season at the helm of the BYU women's basketball program. Last season he guided the Cougar team to a 25-9, 15-1 record, clinching a third MWC Regular season title, and advancing to the Sweet Sixteen of the postseason WNIT. The

year marked his fifth 20-plus wins and the second best total wins in his 10-year tenure.

With the 15-1 conference record also came Judkins' third MWC Coach of the Year citation. Several players also received numerous honors from the league. Senior guard Mindy Bonham was named the MWC Defensive Player of the Year, while junior Kristen Riley garnered the Sixth Player of the Year award, marking the second straight time that a Cougar received that honor. Bonham was also named First Team All-MWC and made the All-Defensive Team. Teammate Coriann Fraughton was named Second Team All-MWC while co-captain Haley Hall picked up Third Team All-MWC accolades with Riley and senior guard Jazmine Foreman receiving Honorable Mention All-MWC. The team concluded the season with an 8-0 record at home finishing 14-2 overall in the Marriott Center.

During the 2009-10 campaign he guided the Cougars to a 23-10 overall record, marking his fourth 20-plus season, his third best during his tenure. The team also finished second (11-5) in the MWC regular season race after being selected to finish fifth. During conference play, the team went 7-1 at home, and concluded the season with an 11-2 record in the Marriott Center.

Six players garnered 11 postseason MWC accolades. For the second straight year, junior Mindy Bonham was named to the All-MWC Second Team. She and teammate Jazmine Foreman were named to the All-Defensive Team. Junior Coriann Wood picked up the league's first ever Sixth Player of the Year award. Wood added her second conference citation being named Honorable Mention All-MWC. Co-captain Haley Hall, and forward Kristen Riley were also Honorable Mention All-MWC.

For the fifth time, the BYU team participated in the postseason WNIT as the automatic qualifier from the MWC. The team had an impressive run in the tournament, advancing to the quarterfinal round (Elite Eight) before losing to eventual champion California. After a 62-58 home victory over Pepperdine, BYU embarked on a six-day, three game schedule where they grabbed victories over ASU, and league foe Wyoming. The postseason appearance was the 12th overall for the school.

Judkins and his staff also guided the Cougar team to back-to-back NCAA tournament appearances in 2006 and 2007.

With the second youngest Division I women's basketball roster, he guided the 2008-09 squad to an 18-11, 8-8/t-fifth record with junior Mindy Bonham (Nielson) garnering two MWC honors on the All-Conference Third Team and on the All-Defensive Team. Graduating seniors and co-captains Shawnee Slade and Cassie King were named Honorable Mention All-MWC. King was also named to the CoSIDA ESPN The Magazine Academic District 8 University Second Team.

The Cougar team recorded back-to-back MWC Regular Season Titles in 2006 and 2007 with players Ambrosia Anderson and Dani Wright being named MWC Co-Players of the Year those same seasons.

During Judkins' fifth season, the 2005-06 campaign, the Cougar squad compiled its best finish in school history with a 26-6 record, clinched its first MWC regular season title since 1992 and received a no. 7 seed in the NCAA tournament, the highest seed for any BYU program.

For the first time since the 2002-03 season, the 2005-06 squad and its 13-1 record to start the year, broke into the women's basketball collegiate polls, ranked no. 23 by the AP Poll and the USA Today/ESPN/WBCA Coaches Poll. They would move up the poll to as high as 18 and 16 in the two respective polls, finishing the year at no. 20. In that same season Judkins picked up his 100th win, a 69-67 victory over CSU on Mar. 2, the same time the team clinched the league's regular season title.

Under Judkins tutelage the women's basketball program has had consistent success with four postseason appearances including three NCAA Championships, guiding the team to its first ever Sweet Sixteen finish in 2002. In 2005, the 19-11 team played in the first round of the WNIT.

Judkins has also coached two All-Americans in Erin Thorn and Ambrosia Anderson. Both have gone on to play in the WNBA. Thorn has been with the New York Liberty team for five years while Anderson completed one season with the Liberty team.

The longtime University of Utah coach and player came to Provo with a proven record of success dating back to his high school days at Highland High School in Salt Lake City. An all-state selection in basketball, football and baseball, Judkins went on to play for the University of Utah from 1974-78.

While playing at Utah, Judkins helped lead the Utes to one conference championship and two berths in the NCAA tournament. He was a second-team academic All-American and three-time District VII academic selection. He also earned three First Team All-WAC honors and was a member of the 1977 United States World Games team that captured the gold medal.

Judkins also played five years in the NBA for the Boston Celtics, Portland Trailblazers, Detroit Pistons and Utah Jazz. He was a second-round pick of the Celtics in 1978, the same year the Celtics selected Larry Bird with the sixth pick overall.

After his NBA career, he returned to Utah in 1989 and was an instrumental part of the program's success during his 10 years with the program, recruiting such players as Keith Van Horn, Andre Miller, Mike Doleac, Hanno Mottola, Alex Jensen, Trent Whiting, Garner Meads, Jeff Johnsen and Britton Johnsen.

Judkins, graduated from the University of Utah in 1978 with a degree in physical and health education.

He and his wife Mary Kaye are the parents of five children: Jessica Paul, Jordan, Jenna {Whitney Neves}, Jaime {Matt Weeks}, Jaxson. They have two grandchildren.

Judkins Coaching Record

School	Yrs.	Rec.	Postseason
BYU	2001-02	24-9	NCAA Sweet 16
BYU	2002-03	19-12	NCAA 1st Round
BYU	2003-04	15-14	DNC
BYU	2004-05	19-11	WNIT 1st Round
BYU	2005-06	26-6	NCAA 2nd Round
BYU	2006-07	23-10	NCAA 1st Round
BYU	2007-08	13-16	DNC
BYU	2008-09	18-11	DNC
BYU	2009-10	23-10	WNIT Quarterfinals
BYU	2010-11	25-9	WNIT Third Round

2011-12 WEST COAST CONFERENCE

The BYU women's basketball team was selected to finish second in the 2011-12 West Coast Conference women's basketball regular season. The nine conference head coaches voted on the preseason poll. BYU begins its first season competing in the WCC. Senior center and co-captain Kristen Riley was named to the 2011-12 Preseason All-WCC Team.

2011-12 West Coast Conference Preseason Poll

Rk.	Team (1st Place votes)	Points
1.	Gonzaga (8)	64
2.	BYU (1)	52
3.	Pepperdine	50
4.	Loyola Marymount	36
5.	St. Mary's	34
6.	Portland	32
7.	San Diego	26
8.	Santa Clara	22
9.	San Francisco	8

2011-12 Preseason All-West Coast Conference Team

Player	School	Yr.	Pos.
Kristen Riley	BYU	Sr.	C
Dominique Conners	San Diego	Sr.	G
Alex Cowling	LMU	RS.-Jr	G/F
Natalie Day	Portland	Sr.	G/F
Jazmine Jackson	Pepperdine	Sr	G
Katelan Redmon	Gonzaga	Sr.	G/F
Alyssa Shoji	Santa Clara	Sr.	G
Jasmine Smith	Saint Mary's	RS-Sr.	G
Kayla Standish	Gonzaga	Sr.	F
ReZina TeclMariam	Portland	Sr.	G

2011-12 WCC Women's Basketball Standings - as of 02/21/12

Team	Conf. Games	All Games
Gonzaga	13-2	24-4
BYU	11-3	23-5
San Diego	10-4	19-7
St. Mary's	10-4	19-8
Pepperdine	7-7	12-13
Santa Clara	4-10	11-16
Portland	3-11	10-18
San Francisco	3-11	5-22
LMU	3-12	7-20

**BYU in West Coast Conference Stats - as of 02/21/12
All Games/League Games**

Team Stats		
Category	Avg.	Rank
Scoring Offense	71.6/69.8	2nd/same
Scoring Defense	56.1/54.7	2nd/1st
Scoring Margin	+15.5/+15.1	1st/same
Free Throw %	.730/.738	2nd/4th
Field Goal %	.439/.434	2nd/same
Field Goal % Defense	.341/.271	2nd/1st
3-Point FG %	.341/.330	3rd/same
3-Point FG % Defense	.276/.271	1st/same
Rebounding Offense	40.6/40.7	4th/3rd
Rebounding Defense	36.0/35.3	3rd/same
Rebounding Margin	+4.6/+5.4	4th/3rd
Blocked Shots	6.0/6.7	1st/same
Assists	19.0/18.3	1st/same
Steals	9.5/8.1	4th/6th
Turnover Margin	+2.2/+1.0	3rd/5th
Assist/Turnover Ratio	1.2/same	1st/same
Offensive Rebounds	13.2/12.6	4th/5thT
Defensive Rebounds	27.4/28.1	1st/same
Defensive Reb. %	.682/.695	3rd/2nd
Offensive Reb. %	.362/.354	4th/same
3-Point FG Made	6.6/6.8	2nd/same

Individual Stats			
Category	Player	Avg.	Rank
Scoring	Riley	11.6/14.5	14th/5th
	Parker	10.4/8.1	20th/26th
	Eaton	10.1/11.1	21st/18th
	Hamson	8.9/10.2	25th/20th
	Steed	8.5/8.7	28th/24th
Rebounding	Riley	7.8/9.2	4th/1st
	Hamson	5.2/5.8	16th/11th
	Peterson	5.0/5.4	18th/14thT
	Steed	4.9/n-a	19th/n-a
Field Goal %	Hamson	.571/same	1st/same
	Riley	.479/.524	5th/3rd
	Eaton	.450/.460	8th/9th
	Steed	7.0/7.5	1st/same
Assists	Parker	3.1/3.1	5th/7th
	Riley	n-a/2.3	n-a/13th
	Hamson	.737/n-a	14th/n-a
Free Throw %	Riley	n-a/.744	n-a/12th
	Parker	n-a/.935	n-a/1st
	Steed	2.1/same	5th/3rd
Steals	Vermunt	.470/.333	1st/9thT
	Parker	.308/n-a	15thT/n-a
3-Point FG %	Riley	n-a/.447	n-a/2nd
	Parker	1.2/n-a	12th/n-a
	Steed	1.5/1.6	8th/6th
3-Point FG Made	Vermunt	1.4/1.2	14th/15thT
	Riley	n-a/1.2	n-a/15thT
	Hamson	2.7/same	1st/same
	Peterson	1.0/1.1	6th/5th
Blocked Shots	Riley	0.8/0.9	10th/6th
	Eaton	n-a/0.6	n-a/12thT
	Steed	2.6/same	2nd/6thT
Assist/TO Ratio	Parker	1.7/1.5	4th/same
	Riley	2.1/same	9th/12th
Offensive Rebs.	Hamson	2.0/2.3	13th/8th
	Riley	5.7/7.1	2nd/1st
Defensive Rebs.	Steed	4.2/3.6	8th/11th
	Peterson	3.6/3.9	15th/10th
	Hamson	n-a/3.5	n-a/14th

THURSDAY WCC OPPONENT

SANTA CLARA

Santa Clara enters this week's WCC race in fifth place with a (11-16, 4-10) record. The Broncos have three players that are putting up double figures in points. Senior guard Alyssa Shoji tops the list with 15.0 points and 2.2 rebounds per game. She's followed by Meagan Fulps, a 5-7 junior guard, who contributes 10.7 points and 3.7 boards in games. Rounding out double digits in scoring is 6-2 junior forward Lindsay Leo with her 10.4 points and a team-best 7.0 rebounds per contest. Santa Clara is averaging 66.0 points while shooting 41 percent from the field, 70 percent at the free throw line and 36 percent from three-point range. Shoji has the most assists with 80 while Ricki Radanovich gets the most steals with 33 to date. Head coach Jennifer Mountain is in her fourth season at the helm of the women's basketball program for the Broncos.

2011-12 Santa Clara Probable Starters

No.	Name	Pos.	Ht.	Yr.	PPG	RPG
32	Lindsay Leo	F	6-2	Jr	10.4	7.0
23	Ashley Armstrong	G	5-11	Jr	7.6	4.1
04	Ricki Radanovich	G	5-10	So	7.7	2.3
03	Megan Fulps	G	5-7	Jr	10.7	3.7
10	Alyssa Shoji	G	5-6	Sr	15.0	2.2

Comparing Stats

Category	BYU	SCU
FG Percentage	.439	.410
3-PT FG Percentage	.341	.355
FT Percentage	.730	.697
Points	71.6	66.0
Rebounds	40.6	35.6
Assists	19.0	13.7
Blocks	6.0	2.4
Steals	9.5	6.7
Turnovers	15.8	16.9

Series Breakdown

Overall Series Record: BYU leads the series 3-1

BYU Record in Provo: 1-0

BYU Record in Santa Clara: 2-1

BYU Record in Neutral Sites: n/a

BYU Record under coach Judkins: 3-0

BYU Record in Overtime Games: n/a

Longest BYU Win Streak: 2 (2003-2006)

Longest Santa Clara Win Streak: 1 (1998)

Largest BYU Margin of Victory: 14, 77-63 in 2006

Largest Santa Clara Margin of Victory: 12, 76-64 in 1998

Last Meeting

In the first game between BYU and Santa Clara on Jan. 28, the Cougars were able to secure a 10-point 74-64 road victory over the Broncos with five players scoring in double figures, the first of the season. Kristen Riley led the way 17 points followed by Jennifer Hamson with 16, 11 points came from Dani Peterson while Kim Parker and Lexi Eaton scoring 10 points each. Riley also grabbed 11 rebounds for her fifth double-double of the year. BYU found itself down by three, 36-39 for just the second time in league play in a first half that saw 16 lead changes. In the second half a layup by Dani Peterson tied the game at 44 before Santa Clara went on a 6-0 run to take a 50-44 lead with 12:33 left in the game. A bucket by Hamson tied up the score again at 50-50 but back-to-back field goals from the Broncos gave them a 58-53 lead with seven minutes remaining. A tough Cougar defense held Santa Clara scoreless for nearly four minutes before Hamson's made free throws gave BYU a 59-58 advantage. A 3-pointer by Haley Steed with 1:22 left extended the Cougars lead to 68-63 as they held on for the 10-point win from the free throw line. The win gave coach Jeff Judkins his 20th win of the year marking his sixth season with 20 or more wins.

Note: The last time Santa Clara played in Provo was on Nov. 22, 2006 when current assistant coach Melinda Bendall (Johnsen) was a starter who scored 10 points and grabbed seven rebounds. Haley Steed (Hall) came off the bench in the game grabbing two rebounds, dishing out one assist and scoring one point.

SATURDAY WCC OPPONENT

No. 21 GONZAGA

The Gonzaga Bulldogs enter this week's WCC action ranked No. 21 in the polls with a 24-4, 13-2 record and are in first place in the league's standings. The Bulldogs have three players scoring in double figures with 6-3 senior forward Kayla Standish leading the way averaging 15.2 points and grabbing a team high 7.9 rebounds per game. Katelan Redmon, a 6-1 senior guard/forward combo is next contributing 13.1 points and 5.8 boards a contest. Rounding out the double digit scoring is sophomore guard Haiden Palmer who tallies 12.0 points and grabs 4.7 rebounds per game. Taelor Karr, a 5-8 junior guard has the most assists on the team with 123 while Palmer gets the most steals with 62 to date. Gonzaga averages 75.6 points and shoots 44 percent from the field, 32 percent from behind the arc and 72 percent at the free throw line. Head coach Kelly Graves is in his 12th year with the Bulldogs.

2011-12 Gonzaga Probable Starters

No.	Name	Pos.	Ht.	Yr.	PPG	RPG
32	Kayla Standish	F	6-3	Sr	15.2	7.9
44	Kelly Bowen	F	6-0	Sr	8.7	5.9
23	Katelan Redmon	F/G	6-1	Sr	13.1	5.8
03	Haiden Palmer	G	5-8	So	12.0	4.7
12	Taelor Karr	G	5-8	Jr	7.5	3.2

Comparing Stats

Category	BYU	GON
FG Percentage	.439	.443
3-PT FG Percentage	.341	.316
FT Percentage	.730	.718
Points	71.6	75.6
Rebounds	40.6	43.5
Assists	19.0	17.3
Blocks	6.0	3.8
Steals	9.5	10.5
Turnovers	15.8	15.1

Series Breakdown

Overall Series Record: 4-3

BYU Record in Provo: 2-1

BYU Record in Spokane: 2-2

BYU Record in Neutral Sites: n/a

BYU Record under coach Judkins: 1-2

BYU Record in Overtime Games: n/a

Longest BYU Win Streak: 2 (1999-2000)

Longest Gonzaga Win Streak: 2 (1993, 2005-2010)

Largest BYU Margin of Victory: 30, 70-40 on 2/9/12

Largest Gonzaga Margin of Victory: 27, 91-64 on 12/21/10

Last Meeting

BYU and Gonzaga played in Provo on Feb. 9, where both teams struggled from the field in the first half as BYU shot just 28.6 percent and Gonzaga shot 15.2 percent. The Cougars were able to outscore the Bulldogs 10-6 allowing them to take a four-point 24-20 lead heading into the break.

In the second half both teams exchanged baskets but with 13:27 remaining BYU took over as a Stephanie Vermunt 3-pointer sparked a 20-0, highlighted by a Kim Parker three-point play as well as five points and a block from sophomore center Jennifer Hamson. The Cougars took a 26-point lead off another three-point play, this time by Lexi Eaton. BYU shot 65.2 percent from the field in the second half and finished outrebounding Gonzaga 44 to 37. Prior to the victory over the Bulldogs, the Cougars had not beaten a ranked team since Nov. 13, 2006 when they defeated No. 4 Stanford, 55-52 on the Cardinal's home court.

TRAVEL PLANS TO SPOKANE

Team Flight: Delta #4646 departs from Salt Lake City on Fri., Feb. 24 at 3:14 p.m., arriving in Spokane at 3:51 p.m.

Team Flight: Delta #4442 departs from Spokane on Sun., Feb. 26 at 10:15 a.m., arriving in Salt Lake City at 12:53 p.m.

Team Hotel: The Davenport Hotel, 10 South Post Street, 509-455-8888, 509-624-4455, fax.

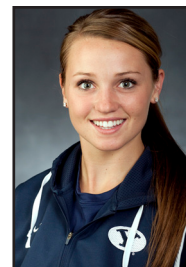
WHAT'S NEXT

After the game at Gonzaga, the Cougars will prepare to compete in their first ever WCC championship in Las Vegas from Feb. 29 to Mar. 5. The winner of the championships receives an automatic berth into the 2012 NCAA Championships. The tournament games will be played at the New Orleans Arena.

PLAYER BIOS

Sadi Dias
Guard
5-7, Freshman
St. George, UT - Pine View HS

#1



AT BYU

FRESHMAN - (2011-12):

⇒ Has played in 10 games to date including her first collegiate game vs. Wisconsin.

⇒ Picked up one assist and one steal in 10 minutes of action vs. BYU-Hawaii.

Before BYU

Four-year letterwinner in basketball ... three-time team MVP (2009, 2010, 2011) ... three-time Dixie State Tournament All-Star (2009, 2010, 2011) ... McDonald's All-America Nominee ... senior season averaged 17.0 ppg, 2.6 three-pointers, 7.0 assists and 4.5 spg ... played club basketball for Salt Lake Metro ... as a freshman was team's leading scorer ... four-year letterwinner in soccer ... four-time team MVP (2008, 2009, 2010, 2011) ... two-time First Team All-State ... three-time leading scorer (2009, 2010, 2011)

Personal

Parents are Rob and Sherri ... has three brothers and one sister.

Yr	G/GS	Dias Stats					Pts.	Reb.	A.	To.	Bl.	St.	
		FG-FGA	%	3FG-3FGA	%	FT-FTA							%
12	10/0	0-7	.000	0-6	.000	0-0	.000	0	0	1	6	0	3

Stephanie Rovetti
Guard
5-6, Freshman/RS
Reno, NV - Reno HS

#2



AT BYU

FRESHMAN (2011-12) -

- ⇒ Played four minutes scoring eight points while grabbing three rebounds in the road game at Seattle University.
- ⇒ Tallied seven points in 12 minutes of action in the game at San Francisco.
- ⇒ Came off the bench in the game vs. Nevada to record six points, grab three rebounds, two assists and three steals in 13 minutes of action.
- ⇒ Was perfect from the free throw line going 8-8 while picking up season highs in rebounds with four, in assists with four and in steals with four in the home game vs. SUU on 12/8/11.
- ⇒ Recorded her first ever double figure game with 12 points at Tulsa while going (8-10) from the free throw line, also grabbed two rebounds, dished out three assists and had two steals.
- ⇒ Has seen playing time in 27 of the 28 games to date.

FRESHMAN (2010--11) - Redshirt

Before BYU: Four-year letterwinner in basketball ... 2009-10 Player of the Year ... team captain ... Northern Nevada Player of the Year ... First Team all-league ... First Team all-region ... First Team all-state ... McDonald's All-American nominee ... helped guide her team to the finals of the state championships as a sophomore ... in her junior year the team advanced to the semifinals of the state championships ... National Honor Society ... Academic Honors Diploma ... played for the Nevada Basketball Academy ... three-year letterwinner in track and field ... holds four school records for track (100m, 200m, 4x100m relay, 4x200m relay) ... 2008 Nevada Runner of the Year ... second in state in 100m and 200m ... all-state in the 100m and 200m ... First Team all-league ... First Team all-region.

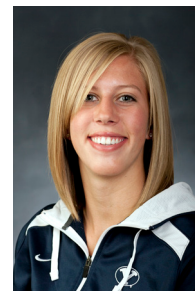
Personal: Parents are David and Diana ... born in Reno, NV ... has one brother and three sisters ... sister Morgan plays on the BYU Rugby Team and was on the U20 Women's National Rugby Team.

Rovetti	Season Highs	Career Highs
Points:	12 @ Tulsa, 11/14/11	same
Rebounds:	4 vs. SUU, 12/8/11	same
3-PT FG's made:		
Assists:	4 vs. SUU, 12/8/11	same
Blocks:		
Steals:	4 vs. SUU, 12/8/11	same

		Rovetti Stats											
Yr	G/GS	FG-FGA	%	3FG-3FGA	%	FT-FTA	%	Pts.	Reb.	A.	To.	Bl.	St.
12	27/0	17-38	.447	0-3	.000	37-50	.740	71	29	28	34	1	19

Ashley Garfield
Guard
5-11, Freshman
Morgan, UT - Morgan HS

#3



AT BYU

FRESHMAN - (2011-12):

- ⇒ Was perfect from the free throw line going 4-for-4 in the home game vs. Gonzaga.
- ⇒ Scored a season and career high in points with eight in the home game vs. Saint Mary's.
- ⇒ Dished out season highs and career bests in assists with four vs. SUU while tying her season high in rebounds with four.
- ⇒ Has played in 23 games to date.
- ⇒ Picked up season and career highs in points and rebounds with seven and four respectively vs. BYU-H.
- ⇒ Scored five points, had one rebound and one assist in eight minutes of playing time at Weber State.
- ⇒ Saw five minutes of action in her first collegiate game at Tulsa on 11/14/11.

Before BYU

Four-year letterwinner in basketball ... team captain senior year ... two-time region MVP ... First-Team All-Region, 2009 ... All-Area Honorable Mention, 2008 ... three-time Deseret News First Team All-State (2009-2011) ... three-time Salt Lake Tribune First Team All-State (2009-2011) ... Ogden Standard Examiner First Team All-State in 2009 ... McDonald's All-American nominee, 2011 ... played club basketball with Salt Lake Metro ... four-year letterwinner in volleyball ... First-Team All-State, 2008 ... two-time Deseret News 3A MVP (2009, 2010) ... two-time Salt Lake Tribune 3A MVP (2009, 2010) ... two-time Region MVP (2009, 2010) ... Utah Gatorade Player of the Year, 2010 ... Ogden Standard Examiner All-Area MVP, 2010 ... letterwinner winner in track & field ... In 2011 finished third in the javelin, sixth in long jump and in the 200m dash, placed eighth in 400m dash ... Academic All-State (2010-11) ... four-time high honor roll (2008-2011) ... National Honor Society President (2010-11).

Personal

Parents are Doug and Kathy ... has one brother and one sister

Garfield

Points:

Rebounds:

3-PT FG's made:

Assists:

Blocks:

Steals:

Season Highs

8 vs. Saint Mary's, 12/4/12

4 vs. SUU, 12/8/11, once more

4 vs. SUU, 12/8/11

Career Highs

same

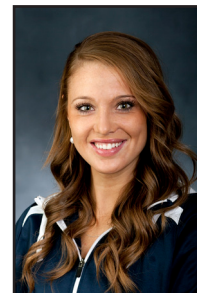
same

same

Garfield Stats													
Yr	G/GS	FG-FGA	%	3FG-3FGA	%	FT-FTA	%	Pts.	Reb.	A.	To.	Bl.	St.
12	23/0	13-29	.448	3-7	.429	20-26	.769	49	24	18	10	2	7

Kim Parker
Guard
5-10, Sophomore
Heber City, UT - Wasatch HS

#4



At BYU

SOPHOMORE - (2011-12):

- ⇒ Tied her season high in rebounds with six in the home game vs. San Diego
- ⇒ Named WCC Player of the Week on Feb 13 for her performance in the home game vs. No. 18 Gonzaga where she led all scorers in points with 16 for her sixth double figure contest in league play, the 16th this year and the 21st of her career while also grabbing five rebounds, one steal, dished out four assists and was perfect at the free throw line going 3-for-3.
- ⇒ Had a career-and season-high five steals in the home game vs. Saint Mary's.
- ⇒ Was the fourth of five player in double figures in points for the Cougars with 10 in the road game at Santa Clara while going 6-for-6 from the charity stripe, the double digit points are the 15th on the season, the 20th overall and the third straight.
- ⇒ Put up 15 points against Seattle University recording her 14th season and 19th overall double figure game.
- ⇒ Was one of three players tallying double digits in points with 13 in the home game vs. Portland marking her 13th double figure outing of the year and the 18th of her career.
- ⇒ Tied her season and career bests in assists with six in the road game at LMU.
- ⇒ Tied her season and career bests in steals with four in the home game vs. Pepperdine.
- ⇒ Tied her career high in 3-pointers made with three in the game at Utah State.
- ⇒ Named WCC Player of the Week for Dec. 5 after guiding BYU to win the 2011 Hukilau Invitational with wins over BYU-H, Arizona and Syracuse, for the week she totalled 64 points, 14 rebounds and dished out 15 assists.
- ⇒ Picked up season and career highs in points with 25 vs. Arizona on 12/1/11 at the Hukilau Invitational.
- ⇒ Started her first ever collegiate game vs. No. 8 Duke leading the BYU effort with 14 points, six rebounds, two assists and two steals.

PLAYER SUMMARY: Enters her second season with plenty of experience after playing in every game her freshman year averaging 15 minutes of playing time ... had the team's second best 3-pt field goal percentage and the third best 3-pt field goals made ... has recorded five double figure contests.

Parker	Season Highs	Career Highs
Points:	25 vs. Arizona @ Hukilau Inv. 12/1/11	same
Rebounds:	6 vs. San Diego, 02/18/12, once more	7 vs. Northwestern, 11/27/10
3-PT FG's made:	3 vs. Utah State, 12/17/11	same, twice more
Assists:	6 @ LMU, 1/19/12, twice more	same, three more
Blocks:	2 vs. Arizona @ Hukilau Inv. 12/1/11	same, once more
Steals:	5 vs. Saint Mary's, 2/04/12	same

		Parker Stats								
Yr	G/GS	FG-FGA %	3FG-3FGA %	FT-FTA %	Pts.	Reb.	A.	To.	Bl.	St.
10	8/0	8-19 .421	4-11 .364	4-7 .571	24	18	5	10	1	5
11	33/0	54-131 .412	31-79 .392	26-31 .839	165	83	49	35	4	24
12	28/28	101-254 .398	40-130 .308	49-58 .845	291	90	87	52	12	40

Jennifer Hamson
Center
6-7, Sophomore
Lindon, UT - Pleasant Grove HS

#5



At BYU

SOPHOMORE - (2011-12):

- ⇒ Tallied 14 points, seven rebounds and a team-best three blocks in the home game vs. San Diego, the points mark the 10 double figure game in that category this year and the 20th overall.
- ⇒ Recorded a season-high 18 points to tie her career best while also grabbing nine rebounds and three blocks in the home game vs. Saint Mary's, the points mark the eight double digit contest of the year and the 18th of her career.
- ⇒ Tied her season best in blocks with five in the road game at Pepperdine to go along with her five points and two rebounds.
- ⇒ Had game highs in blocks with six for season bests in that category to go along with her nine points and seven rebounds in the road game at Seattle University.
- ⇒ Picked up her third double double of her career and the second on the season with 14 points and 10 rebounds in the home game vs. Portland. She scored 10 straight points in the first half before finishing with 14 for new season highs while marking the sixth time scoring in double figures this season and the 16th overall.
- ⇒ Tied her season bests in blocks with five in the home game vs. Pepperdine while playing just 19 minutes, the points were the fifth double digit outing of the year and 15th overall.
- ⇒ Came off the bench scoring eight points and grabbing game highs in rebounds with seven in the road game at San Francisco.
- ⇒ Came off the bench to record her first double double of the season and the second of her career with 10 points and 10 rebounds vs. Nevada.
- ⇒ Tied her season high in rebounds grabbing a team high seven vs. SUU on 12/8/11 while picking up season bests in blocks with five for team and game highs.
- ⇒ Recorded her third double figure game of the year and 12th overall with 12 points vs. Arizona at the Hukilau Invitational.
- ⇒ Came off the bench playing 11 minutes picking up one steal and one block in the home game vs. No. 8 Duke.

PLAYER SUMMARY: Begins her second year with the women's basketball program ... a dual sport student-athletes who also plays on the women's volleyball team ... started in all conference games last season ... comes into the year with the team's best field goal percentage (.559, 90-161) and has the most blocks with 45 ... recorded 10 double figures contests and one double double ... averaged 15 minutes of playing time.

Hamson

Points:
Rebounds:
3-PT FG's made:
Assists:
Blocks:
Steals:

Season Highs

18 vs. Saint Mary's, 2/04/12
 10 vs. Portland, 1/21/12, once more
 5 @ Pepperdine, 2/2/12, twice more

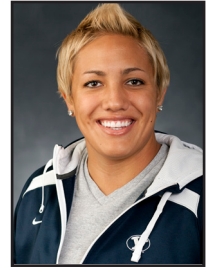
Career Highs

same, once more
 13 @ TCU, 01/19/11
 1 vs. Weber State, 12/11/10
 9 @ UNLV, 2/5/11
 1 @ Air Force, 01/08/11

Hamson Stats													
Yr	G/GS	FG-FGA	%	3FG-3FGA	%	FT-FTA	%	Pts.	Reb.	A.	To.	Bl.	St.
11	30/20	90-161	.559	0-0	.000	51-69	.739	231	154	4	27	45	7
12	26/0	88-154	.571	0-1	.000	56-76	.737	232	136	13	26	71	15

Alexis Kaufusi
Forward/Center
6-1, Junior
Provo, UT - Timpview HS

#10



At BYU

JUNIOR - (2011-12):

- ⇒ Grabbed four rebounds for season highs in the game at Portland.
- ⇒ Played six minutes tallying six points in the home game vs. Nevada which tie for season highs.
- ⇒ Tied for career bests in assists and in steals with two each vs. SUU on 12/8/11, both were also season highs.
- ⇒ Has played in 17 games to date averaging 5.6 minutes of action.
- ⇒ Picked up season highs in points with six vs. Eastern Washington on 11/26/11.
- ⇒ Played six minutes scoring two points and grabbing one rebound at Weber State.
- ⇒ Came off the bench playing four minutes recording one assist in the home opener vs. No. 8 Duke.

PLAYER SUMMARY - Returns to the Cougar lineup after missing the second half of last year's MWC schedule when she was diagnosed with cancer ... has recorded 11 double figure games ... averaged nearly 10 minutes of playing time.

Kaufusi

Points:

Rebounds:

3-PT FG's made:

Assists:

Blocks:

Steals:

Season Highs

6 vs. East. Washington, 11/26/11

4 @ Portland, 1/2/12

2 vs. SUU, 12/8/11

2 vs. SUU, 12/8/11

Career Highs

14 @ Cal 3/27/10, three more

11 vs. New Mexico, 1/27/10, once more

same, once more

same, three more

Kaufusi Stats													
Yr	G/GS	FG-FGA	%	3FG-3FGA	%	FT-FTA	%	Pts.	Reb.	A.	To.	Bl.	St.
10	33/0	94-194	.485	1-1	1.000	39-66	.591	228	150	9	65	15	12
11	20/0	42-91	.462	0-0	.000	14-25	.560	98	56	5	23	2	3
12	17/0	13-30	.444	0-0	.000	2-4	.500	28	22	6	13	3	1

Xojian Harry
Guard
5-11, Freshman
Bountiful, UT - Viewmont & Woods Cross HS

#11



AT BYU

FRESHMAN - (2011-12):

- ⇒ Played eight minutes recording one rebound and two steals for season bests in that category in the road game at Seattle University.
- ⇒ Made two 3-pointers in the game at Portland finishing with eight points.
- ⇒ Scored six points, grabbed two rebounds and dished out one assist in the home game vs. Nevada.
- ⇒ Has played in all games, grabbing three boards at BYU-H on 11/29/11 for season and career highs.
- ⇒ Picked up season highs in points with nine vs. Wisconsin.
- ⇒ Played in her first ever collegiate game scoring eight points and dishing out one assist in 11 minutes in the home game vs. No. 8 Duke.

Before BYU

Four-year letterwinner in basketball ... two-time team MVP (2010, 2011) ... Offensive MVP, 2009 ... two-time All-Region Team (2010, 2011) ... Davis County Clipper Athlete of the Year, 2010 ... two-time First Team All-State (2010, 2011) ... McDonald's All-America Nominee ... played club basketball for Utah Flight ... three-year letterwinner in volleyball ... Third Team All-State, 2011 ... All-Region, 2009 ... three-year letterwinner in track ... state champ in 4x100m relay, 2009 ... First Team All-State ... long jump region champ, 2009 ... two-year letterwinner in softball ... Hit For the Cycle, 2008 ... two-time All-State Honorable Mention (2008, 2009) ... Academic All-State in volleyball and basketball ... graduated with High Honors ... National Honor Society.

Personal

Parents are Carl and Susan ... has three brothers and one sister.

Harry	Season Highs	Career Highs
Points:	9 vs. Wisconsin, 11/23/11	same
Rebounds:	3 @ BYU-H, 11/29/11	same
3-PT FG's made:	2 @ Portland, 1/2/12	same
Assists:	1 vs. Nevada, 12/22/11, once more	same
Blocks:		
Steals:	2 @ Seattle Univ., 1/25/12	same

		Harry Stats											
Yr	G/GS	FG-FGA	%	3FG-3FGA	%	FT-FTA	%	Pts.	Reb.	A.	To.	Bl.	St.
12	28/0	30-75	.400	9-35	.257	3-7	.429	72	17	4	13	3	14

Stephanie Vermunt
Guard/Forward
6-0, Sophomore
Airdrie, Alberta, Canada - Bert Church HS

#12



At BYU

SOPHOMORE - (2011-12):

- ⇒Went 3-of 4 in the first half from three-point range to lead the Cougars with nine points at the end of the first half at Seattle Univ., finishing the game with 14 points going 4-of-5 from three point range for her fifth double figure game this year and the eighth overall, the points tied her season bests.
- ⇒Tied her season and career bests in assists with four in the road game at San Diego.
- ⇒Recorded 12 points off the bench in the home game vs. Pepperdine while shooting a perfect 3-for-3 from beyond the arc for her fourth double digit game of the year, the seventh overall.
- ⇒Tied her season high in rebounds grabbing four in the home game vs. LMU.
- ⇒Came off the bench to score 12 points at Utah State for her third double figure outing of the year and the sixth overall while tying for the second time this year her career high in 3-pointers made with four.
- ⇒Set a season high of four 3-pointers, tying her career high from last season in the home game vs. Utah, was also perfect 4-for-4 from beyond the arc, and recorded season highs in points with 14 for her second double digit outing of the year and the fifth of her career.
- ⇒Picked up her first double figure contest of the season and her fourth overall with 10 points vs. Wisconsin while grabbing three rebounds, dishing out two assists and recording one block.

PLAYER SUMMARY - Begins her second year with the BYU program after a redshirt season followed by significant playing time her freshman year seeing action in a total of 29 contests ... has tallied three double figure contests.

Vermunt

Points:
Rebounds:
3-PT FG's made:
Assists:
Blocks:
Steals:

Season Highs

14 @ Seattle Univ., 1/25/12, once more
 4 vs. LMU, 01/05/12, twice more
 4 @ Utah State, 12/17/11, once more
 4 @ San Diego, 1/14/12, once more
 3 @ Weber St., 11/19/11

Career Highs

17 vs. Washington, 11/20/10
 7 vs. USU, 11/23/10
 same, twice more
 same
 same

		Vermunt Stats											
Yr	G/GS	FG-FGA	%	3FG-3FGA	%	FT-FTA	%	Pts.	Reb.	A.	To.	Bl.	St.
10	Redshirt												
11	29/0	35-118	.297	18-68	.265	12-22	.545	100	43	11	21	4	11
12	28/0	67-154	.435	39-83	.470	7-12	.583	180	66	31	24	8	13

Mackenzie Nielson
Forward
6-0, Freshman
Springville, UT - Springville HS

#14



AT BYU

FRESHMAN - (2011-12):

- ⇒ Scored two points vs. SUU on 12/8/11 and recorded one steal.
- ⇒ Has seen action in 12 games to date playing in her first collegiate game at Weber State.

Before BYU

Four-year letterwinner in basketball ... team captain, 2011 ... Deseret News First Team All-Region, 2011 ... Daily Herald All-Valley Team, 2011 ... team was region champs twice (2010, 2011) ... Salt Lake Tribune First Team All-State, 2011 ... Deseret News Third Team All-State, 2011 ... Deseret News 4A All-Tournament Team, 2011 ... UWBCA Senior All-Star ... played club basketball with Salt Lake Metro ... 2009 Elite Travel Team ... three-year letterwinner in volleyball ... her senior year was on High Honor Roll, National Honor Society and was named Academic All-State.

Personal

Parents are Todd and Janice ... Has two brothers and three sisters.

Nielson	Season Highs	Career Highs
Points:	2 vs. SUU, 12/8/11	same
Rebounds:		
3-PT FG's made:		
Assists:		
Blocks:		
Steals:	1 vs. SUU, 12/8/11	same

Nielson Stats													
Yr	G/GS	FG-FGA	%	3FG-3FGA	%	FT-FTA	%	Pts.	Reb.	A.	To.	Bl.	St.
12	12/0	1-8	.125	0-0	.000	0-1	.000	2	8	0	1	1	3

Lexi Eaton
Guard
5-10, Freshman
Mapleton, UT - Springville HS

#21



AT BYU

FRESHMAN - (2011-12):

- ⇒ Tallied 11 points in the home game vs. San Diego for the 10 double digit outing in WCC action and the 18th overall.
- ⇒ Had game highs in points with 16 in the home game vs. Portland for her seventh consecutive contest scoring in double figures in this year's WCC race, the points are the 15th double figure outing of the season and tie for career highs while the five assists are career highs in that category.
- ⇒ Recorded four steals for career bests in the home game vs. Nevada.
- ⇒ Dished out three assists vs. Utah tying her career high in that category.
- ⇒ Picked up her sixth double figure game of the year and her career with 10 vs. Syracuse at the Hukilau Invitational on 12/3/11.
- ⇒ Led the team effort in the road game at Kansas State with 16 points while going perfect from the charity stripe (4-4), the points were season and career highs, also grabbed five boards for season and career highs in that category.
- ⇒ Started her first ever collegiate game vs. No. 8 Duke in the team's home opener contributing 10 points while also grabbing two rebounds and dishing out two assists.

Before BYU

Four-year letterwinner in basketball ... two-time Female Athlete of the Year (2010, 2011) ... all-time leading scorer at high school with 1,697 career points ... state's leading scorer (2010, 2011) ... Nebo School District Female Athlete of the Year ... Nebo School District Award of Athletic Excellence ... two-time Region MVP ... First Team All-Region, 2009 ... All-Region, 2008 ... two-time Utah Gatorade Player of the Year (2010, 2011) ... two-time Salt Lake Tribune Female Athlete of the Year (2010, 2011) ... two-time Salt Lake Tribune 4A MVP (2010, 2011) ... Deseret News 4A MVP, 2011 ... two-time Utah Valley Player of the Year (2010, 2011) ... two-time state tournament MVP (2010, 2011) ... First-Team All-State, 2009 ... State All-Tournament Team, 2009 ... All-Valley Team, 2009 ... All-State Honorable Mention, 2008 ... Parade All-American, 2011 ... McDonald's All-American Nominee, 2011 ... ESPN Rise Underclass All-America Team, 2010 ... Sporting News College Basketball All-America Team, 2010 ... played club basketball with Salt Lake Metro ... four-year letterwinner in soccer ... two-time First Team All-State (2010, 2011) ... leading scorer in 4A (2.0 gpg), 2011 ... two-time Utah Valley Offensive Player of the Year (2010, 2011) ... Second Team All-State, 2009 ... Honorable Mention All-State, 2008 ... four-year letterwinner in track ... Third highest jump in the nation (5'10.5"), 2011 ... high jump state champion, 2011 ... holds school record in high jump, 4x100m relay and 4x400m relay ... three-time First Team All-State (2009, 2010, 2011) ... two-time third place in state high jump (2008, 2010) ... second place state high jump (2009) ... team was high school 4A state champions, 2011 ... three-time team second place finish at 4A state champions (2008, 2009, 2010) ... two-time team was region champs (2010, 2011) ... two-time 4x100m relay state champs (2010, 2011) ... four-time High Honors Roll (2008-2011).

Personal

Parents are Alan and Aleisa ... has six siblings.

Eaton

Points:

Rebounds:

3-PT FG's made:

Assists:

Blocks:

Steals:

Season Highs

16 vs. Portland, 1/21/12, twice more

7 vs. Pepperdine, 1/12/12

2 @ USF, 1/7/12, once more

5 vs. Portland, 1/21/12

2 vs. Pepperdine, 1/12/12

4 vs. Nevada, 12/22/11

Career Highs

same

same

same, once more

same

same

same

Eaton Stats												
Yr	G/GS	FG-FGA	%	3FG-3FGA	%	FT-FTA	%	Pts.	Reb.	A. To.	Bl.	St.
12	28/28	107-238	.450	17-52	.327	53-68	.779	284	80	52 74	11	33

Dani Peterson
Forward
6-1, Senior
Salt Lake City, UT - Skyline HS

#32



At BYU

SENIOR - (2011-12):

- ⇒ Dished out five assists in the home game vs. San Francisco setting new career highs in that category.
- ⇒ Grabbed a team-high 10 rebounds in the home game vs. No. 18 Gonzaga which tied her season and career bests in that category.
- ⇒ Recorded her seventh double figure game of the season in points with 11 which is also her 11th career double digit outing in the road game at Santa Clara.
- ⇒ Picked up new season and career bests in steals with three in the road game at LMU.
- ⇒ Finished the game with 10 points for her sixth double figure contest of the year, her 10th overall at San Diego.
- ⇒ Picked up season and career highs in blocks with five in the game at Portland.
- ⇒ Led the team in points with 14 in the game at Utah State recording her fifth double digit performance of the year, the seventh overall and the second straight while making all four of her free throws.
- ⇒ Recorded her first ever double double with 14 points and 10 boards vs. Syracuse at the Hukilau Invitational on 12/3/11 with the rebounds being season and career highs, the points were her third this year and the fifth of her career.
- ⇒ For the second straight time recorded double digits in scoring with 15 for team highs in the game vs. Wisconsin and her fourth overall.
- ⇒ Started in her first game in the home opener vs. No. 8 Duke picking up two points, four rebounds and one assist.

PLAYER SUMMARY - Begins her final season with the women's basketball program after playing in a total of 80 games in the previous three years ... is one of three seniors on this year's squad ... has recorded three double figure games ... was third on the team in blocks with 22, fifth in offensive rebounds with 35 and fourth in field goal percentage (.462) ... averaged 15 minutes of playing time off the bench.

Peterson	Season Highs	Career Highs
Points:	15 vs. Wisconsin, 11/23/11	same
Rebounds:	10 vs. No. 18 Gonzaga, 2/9/12, once more	same
3-PT FG's made:		
Assists:	5 vs. San Francisco, 2/16/12	same
Blocks:	5 @ Portland, 01/02/12	same
Steals:	3 @ LMU, 1/19/12	same

		Peterson Stats											
Yr	G/GS	FG-FGA	%	3FG-3FGA	%	FT-FTA	%	Pts.	Reb.	A.	To.	Bl.	St.
09	16/0	11-36	.306	0-2	.000	10-14	.714	32	24	0	7	5	3
10	30/0	41-110	.373	1-18	.056	7-16	.438	90	75	10	22	10	5
11	34/0	61-132	.462	4-25	.160	9-16	.563	135	104	17	21	22	17
12	28/28	75-137	.547	8-17	.471	22-28	.786	180	141	27	38	28	17

Haley Steed
Guard
5-4, Senior
Syracuse, UT - Clearfield HS

#33



At BYU

SIXTH YEAR SENIOR - (2011-12):

- ⇒ Picked up her 11th double figure game in points with 14 in the home game vs. San Diego, 12 of those were from 3-point range, the points were the 39th in her career, also dished out game highs in assists with five and in steals with three.
- ⇒ Recorded game highs in assists dishing out eight in the road game at Pepperdine and had team highs in steals with three.
- ⇒ Dished out game highs in assists with 10 while grabbing six rebounds and scoring three points in the home game vs. Portland.
- ⇒ Recorded her second double double of the season and the third of her career with 11 points and 14 assists in the home game vs. Pepperdine, the assists were career bests, team and game highs and rank No. 6 all-time for a single game while the points are the eighth double digit performance of the season and the 36th of her career.
- ⇒ Tallied 13 points including going 3-of-4 from three-point range in the road game at San Francisco while dishing out team and game highs in assists with five.
- ⇒ In the home game vs. Utah tallied 12 points for her sixth double digit outing of the year and her 34th overall and also had team highs in rebounds with nine and in steals with two.
- ⇒ Picked up her second straight double digit game with 10 points for her fifth of the year and 33rd overall vs. Syracuse at the Hukilau Invitational.
- ⇒ Tied her career in points and in three pointers made with 24 and six respectively in the game at Tulsa leading all scorers while recording her second straight double digit outing of the year and the 30th in her career.
- ⇒ In the home opener against No. 8 Duke recorded season and career highs in rebounds with 15.

PLAYER SUMMARY: Returns for her final year of eligibility with the BYU women's basketball program ... is one of two returning starters ... has garnered two MWC Academic All-Conference citations ... concluded the year ranked 47th in the NCAA in assists per game and fourth in assist/turnover ratio ... was ranked 34th in the nation in assists/turnover ratio at the conclusion of the 2009-10 season ... comes into the year with the team's second best point average (8.5), the second best free throw percentage (.786, 22-28), has the most assists with a total of 168 and the most steals with 62 ... will be one of two co-captains on this year's team marking her fourth straight selection ... has recorded 28 double figure games including 10 last season.

Steed	Season Highs	Career Highs
Points:	24 @ Tulsa, 11/14/11	same, once more
Rebounds:	15 vs. Duke, 11/11/11	same
3-PT FG's made:	3 @ San Francisco, 1/7/12	6 @ Utah, 1/30/10
Assists:	14 vs. Pepperdine, 1/12/12	same
Blocks:	2 vs. SUU, 12/8/11	same, once more
Steals:	5 vs. AZ @ Laie, 12/1/11, once more	7 @ ASU, 3/23/10

		Steed Stats								
Yr	G/GS	FG-FGA %	3FG-3FGA %	FT-FTA %	Pts.	Reb.	A.	To.	Bl.	St.
07	7/0	15-39 .385	9-20 .450	5-8 .625	44	12	17	19	1	6
08	Injury redshirt									
09	1/1	2-9 .222	1-3 .333	6-6 1.000	11	3	4	5	0	4
10	33/33	109-288 .378	58-162 .358	20-28 .714	296	116	133	73	5	76
11	34/34	101-298 .339	65-199 .327	22-28 .786	289	112	168	64	11	62
12	28/28	80-237 .338	43-140 .307	36-46 .783	239	138	196	74	4	60

Kristen Riley
Forward
6-3, Senior
San Clemente, CA - San Clemente HS

#35



At BYU

SENIOR - (2011-12):

- ⇒ Recorded her ninth double-double of the year and the 13th in her career with 12 points and a game high 13 rebounds in the home game vs. San Diego.
- ⇒ With her rebound at 7:15 in the first half of the home game vs. San Francisco, tied her sister Lauren Riley Varley in career rebounds and is now in seventh place in BYU history for rebounds with 690, also had her eighth double-double of the season and 12th of her career with a team-best 16 points and 11 rebounds.
- ⇒ Picked up her fifth-straight double-figure outing with 11 points in the home game vs. No. 18 Gonzaga and with the team-high 10 rebounds recorded her fourth double-double in five games, seventh of the year and the 11th of her career.
- ⇒ Scored 15 points for her fourth-straight double-figure outing marking the 12th game scoring in double digits this year and the 39th of her career in the home game vs. Saint Mary's.
- ⇒ Garnered two national player of the week citations earning College Basketball Mid-Major Conference Player of the Week honors by netscoutsbasketball.com and was also named Madness High-Major WCC Player of the Week by collegesportsmadness.com
- ⇒ Tallied her third straight double double with 15 points and 13 rebounds in the road game at Pepperdine for the sixth of the year and the 10th of her career, the points marked the 11th double digit outing of the year and the 38th overall while the rebounds tied for season and career bests.
- ⇒ Named WCC Player of the Week on Jan. 30 after her back-to-back double doubles in the two road games the team played at Seattle and at Santa Clara.
- ⇒ Recorded a career high four three-pointers in the road game at Santa Clara.
- ⇒ Led all players in the rebound category grabbing eight boards in the home game vs. Pepperdine while collecting nine points, five assists and a season best two blocks.
- ⇒ Dishing out six assists for season and career bests in the game vs. Arizona, at the Hukilau Inv., on 12/1/11
- ⇒ Tied her season and career highs in steals with three vs. Wisconsin on 11/23/11.

PLAYER SUMMARY: Will be playing in her final season with the BYU women's basketball program and is one of three seniors on this year's squad ... has tallied 26 double figure games and four double doubles in her career ... returns as the team's leading rebounder with a 5.4 average and leading scorer with 8.9 points per contest ... was selected as one of two co-captains for the 2011-12 season ... on this year's team has the third most blocks with 16 ... was named 6th Player of the Year by the MWC marking the second straight year that a BYU player received the honor ... she's a two-time Honorable Mention All-MWC and was named the MWC Preseason Freshman of the Year in the 2008-09 season.

Riley	Season Highs	Career Highs
Points:	22 @ LMU, 1/19/12	23 @ SDSU, 1/26/11
Rebounds:	13 @ Pepperdine, 2/2/12, once more	same
3-PT FG's made:	4 @ Santa Clara, 1/28/12	same
Assists:	6 vs. Arizona, @ Hukilau Inv., 12/1/11	same
Blocks:	4 @ San Francisco, 1/7/12	same
Steals:	3 vs. Wisconsin, 11/23/11, once more	same, five more

		Riley Stats											
Yr	G/GS	FG-FGA	%	3FG-3FGA	%	FT-FTA	%	Pts.	Reb.	A.	To.	Bl.	St.
09	29/1	34-105	.324	5-23	.217	24-42	.571	97	105	18	44	17	20
10	33/33	102-214	.477	16-52	.308	49-85	.576	269	188	39	62	22	37
11	34/14	114-227	.502	18-41	.439	55-105	.524	301	182	46	58	16	29
12	28/28	126-263	.479	24-56	.429	49-79	.620	325	218	65	54	21	36

Morgan Bailey
Forward
6-2, Freshman
Orem, UT - Timpanogos HS

#41



At BYU

FRESHMAN - (2011-12):

- ⇒ Tied her season and career best in the rebound category grabbing four in the home game vs. LMU on 1/5/12.
- ⇒ Played 11 minutes tallying four points and grabbing two rebounds in the home game vs. Nevada.
- ⇒ Picked up season and career highs in points with seven vs. BYU-H.
- ⇒ Played in her first collegiate game at Tulsa tallying five points, four rebounds and two blocks in 11 minutes of action.

FRESHMAN (2010-11) - Redshirt

Before BYU: Four-year letterwinner in basketball ... Spirit of Timpanogos Award for Athletics as a sophomore and senior ... region MVP ... team was region champs for the 2009-10 season ... Region 4 First Team ... received 5A Honorable Mention all-state honors ... named Salt Lake Tribune All-State ... garnered Deseret News All-State honors ... named to the 4A all-tournament team ... McDonald's All-American nominee ... First Team all-valley ... played three years with the Utah Flight Club ... averaged 17.0 points per game and grabbed 3.7 rebounds per contest in high school.

Personal

Parents are Roxanne and Carl Bailey ... born in Alexandria, VA ... has one brother and one sister ... uncle is Thurl Bailey.

Bailey	Season Highs	Career Highs
Points:	7 @ BYU-H, 11/29/11	same
Rebounds:	4 vs. LMU, 01/5/12, three more	same
3-PT FG's made:		
Assists:	1 vs. SUU, 12/8/11	same
Blocks:	2 @ Tulsa, 11/14/11	same
Steals:		

		Bailey Stats											
Yr	G/GS	FG-FGA	%	3FG-3FGA	%	FT-FTA	%	Pts.	Reb.	A.	To.	Bl.	St.
12	21/0	17-46	.370	2-9	.222	8-14	.571	44	34	4	13	4	5

WALK-ONS

Kylie Brown
Guard
5-7, Freshman
Grangeville, ID - Grangeville HS

#30



AT BYU
FRESHMAN - (2011-12):

Before BYU

Four-year letterwinner in basketball ... team captain ... two-time Miss Offense (2010, 2011) ... Rookie of the Year (2007-08) ... two-time League MVP (2010, 2011) ... Idaho 2A Player of the Year 2011 ... two-time First Team All-State (2010, 2011) ... Second Team All-State (2009) ... played three years for Idaho Flash Club ... four-year letterwinner in volleyball ... two-year letterwiners in softball ... two-year letterwinner in track ... was an 4x4 relay State Champions (2010).

Personal

Parents are Joel and Brandy ... has two brothers and two sisters.

Valerie Nawahine
Guard
5-7, Freshman
La Jolla, CA - Cathedral Catholic & La Jolla HS

#50



AT BYU
FRESHMAN - (2011-12):

Before BYU

Four-year letterwinner in basketball ... played for La Jolla High School (LJHS) in ninth and 10th grade ... played at Cathedral Catholic High School (CCHS) her junior and senior year ... CIF Div. III Finalists in 2011 (CCHS) ... leading scorer freshman and sophomore seasons (LJHS) ... team Captain, 2011 (CCHS) ... three-time Most Inspirational for basketball ... four-time named Western League All-Academic Team for basketball ... four-time named CIF All-Academic Team in basketball ... two-year letterwinner in volleyball (LJHS) ... CIF Div. III Finalist for volleyball, 2008 (LJHS) ... most Inspirational for volleyball, 2008 (LJHS) ... lettered in softball, track and field and in cross country.

Personal

Parents are Hank and Eve ... has six brothers and two sisters.

Kari Ryser
Guard
5-8, Sophomore
Tarzana, CA - Calabasas HS

#55



AT BYU
FRESHMAN - (2011-12):

Before BYU

Four-year letterwinner in basketball ... team MVP (2008) ... Most Inspirational Player (2010) ... team took third in CIF Playoffs (2009) ... National Honor Society.

Personal

Parents are Karl and Julie ... has two sisters.

THE STAT CREW SYSTEM
Brigham Young University Combined Team Statistics (as of Feb 18, 2012)
All games

Overall record: 23-5 Conf: 11-3 Home: 11-2 Away: 10-3 Neutral: 2-0

##	Player	gp-gs	min	avg	Total		3-Point		F-Throw		Rebounds				pf	dq	a	to	blk	stl	pts	avg	
					fg-fga	fg%	3fg-fga	3fg%	ft-fa	ft%	off	def	tot	avg									
35	RILEY, Kristen	28-28	801	28.6	126-263	.479	24-56	.429	49-79	.620	59	159	218	7.8	69	1	65	54	21	36	325	11.6	
04	PARKER, Kim	28-28	779	27.8	101-254	.398	40-130	.308	49-58	.845	29	61	90	3.2	45	1	87	52	12	40	291	10.4	
21	EATON, Lexi	28-28	625	22.3	107-238	.450	17-52	.327	53-68	.779	40	40	80	2.9	56	1	52	74	11	33	284	10.1	
05	HAMSON, Jennifer	26-0	445	17.1	88-154	.571	0-1	.000	56-76	.737	51	85	136	5.2	40	1	13	26	71	15	232	8.9	
33	STEED, Haley	28-28	935	33.4	80-237	.338	43-140	.307	36-46	.783	20	118	138	4.9	55	1	196	74	4	60	239	8.5	
32	PETERSON, Dani	28-28	651	23.3	75-137	.547	8-17	.471	22-28	.786	41	100	141	5.0	58	1	27	38	28	17	180	6.4	
12	VERMUNT, Stephanie	28-0	463	16.5	67-154	.435	39-83	.470	7-12	.583	12	54	66	2.4	34	0	31	24	8	13	180	6.4	
02	ROVETTI, Stephanie	27-0	220	8.1	17-38	.447	0-3	.000	37-50	.740	9	20	29	1.1	26	0	28	34	1	19	71	2.6	
11	HARRY, Xojian	28-0	229	8.2	30-75	.400	9-35	.257	3-7	.429	5	12	17	0.6	20	0	4	13	3	14	72	2.6	
03	GARFIELD, Ashley	23-0	141	6.1	13-29	.448	3-7	.429	20-26	.769	9	15	24	1.0	7	0	18	10	2	7	49	2.1	
41	BAILEY, Morgan	21-0	127	6.0	17-46	.370	2-9	.222	8-14	.571	16	18	34	1.6	11	0	4	13	4	5	44	2.1	
10	KAUFUSI, Alexis	17-0	95	5.6	13-30	.433	0-0	.000	2-4	.500	6	16	22	1.3	18	0	6	13	3	1	28	1.6	
30	BROWN, Kylie	9-0	22	2.4	2-9	.222	1-7	.143	2-2	1.000	1	0	1	0.1	2	0	1	2	0	1	7	0.8	
14	NIELSON, Mackenzie	12-0	31	2.6	1-8	.125	0-0	.000	0-1	.000	4	4	8	0.7	6	0	0	1	1	3	2	0.2	
01	DIAS, Sadi	10-0	29	2.9	0-7	.000	0-6	.000	0-0	.000	0	0	0	0.0	4	0	1	6	0	3	0	0.0	
50	NAWAHINE, Valerie	2-0	2	1.0	0-0	.000	0-0	.000	0-0	.000	0	1	1	0.5	0	0	0	0	0	0	0	0.0	
55	RYSER, Kari	3-0	5	1.7	0-0	.000	0-0	.000	0-0	.000	0	0	0	0.0	1	0	0	1	0	0	0	0.0	
Team											67	64	131										
Total.....		28	5600	737-1679		.439	186-546	.341	344-471	.730	369	767	1136	40.6	452	6	533	441	169	267	2004	71.6	
Opponents.....		28	5600	541-1585		.341	113-409	.276	375-511	.734	356	650	1006	35.9	429	-	268	503	60	198	1570	56.1	

TEAM STATISTICS	BY	OPP	Date	Opponent	Score	Att.
SCORING	2004	1570	11-11-11	#8/8 DUKE	L 55-61	2553
Points per game	71.6	56.1	11/14/11	at TULSA	w 64-61	577
Scoring margin	+15.5	-	11/16/11	at Kansas State	L 46-59	2889
FIELD GOALS-ATT	737-1679	541-1585	11/19/11	at Weber State	w 84-67	864
Field goal pct	.439	.341	11/23/11	WISCONSIN	w 77-59	711
3 POINT FG-ATT	186-546	113-409	11/26/11	EASTERN WASHINGTON	w 77-58	719
3-point FG pct	.341	.276	11/29/11	at BYU-Hawaii	w 88-27	111
3-pt FG made per game	6.6	4.0	12/1/11	vs Arizona	w 82-73	211
FREE THROWS-ATT	344-471	375-511	12/03/11	vs Syracuse	w 83-59	75
Free throw pct	.730	.734	12/8/11	SOUTHERN UTAH	w 82-49	711
F-Throws made per game	12.3	13.4	12/10/11	UNIVERSITY OF UTAH	w 63-58	1270
REBOUNDS	1136	1006	12/17/11	at Utah State	w 73-65	551
Rebounds per game	40.6	35.9	12/22/11	NEVADA	w 84-53	801
Rebounding margin	+4.6	-	* 12/31/11	at Saint Mary's (CA)	L 48-54	438
ASSISTS	533	268	* 1/02/12	at Portland	w 79-53	312
Assists per game	19.0	9.6	* 01/05/12	LOYOLA MARYMOUNT	w 80-47	787
TURNOVERS	441	503	* 1/7/12	at San Francisco	w 76-67	517
Turnovers per game	15.8	18.0	* 1/12/12	PEPPERDINE UNIVER.	w 80-56	1304
Turnover margin	+2.2	-	* 1/14/12	at San Diego	w 62-53	606
Assist/turnover ratio	1.2	0.5	* 01/19/12	at LMU Lions	w 72-48	298
STEALS	267	198	* 1/21/12	UNIV. OF PORTLAND	w 76-55	1196
Steals per game	9.5	7.1	01/25/12	at Seattle University	w 69-55	677
BLOCKS	169	60	* 1/28/12	at Santa Clara	w 74-64	805
Blocks per game	6.0	2.1	* 02/02/12	at Pepperdine	L 49-61	313
ATTENDANCE	15459	9244	* 2/4/12	SAINT MARY'S COLLEGE	w 83-47	1296
Home games-Avg/Game	13-1189	13-689	* 2/9/12	GONZAGA	w 70-40	2014
Neutral site-Avg/Game	-	2-143	* 2/16/12	SAN FRANCISCO	L 64-71	968
			* 2/18/12	UNIV. OF SAN DIEGO	w 64-50	1129

Score by Periods	1st	2nd	Totals
Brigham Young Univer	960	1044	2004
Opponents	730	840	1570

* = Conference game

THE STAT CREW SYSTEM
Brigham Young University Combined Team Statistics (as of Feb 18, 2012)
Conference games

Overall record: 11-3 Conf: 11-3 Home: 6-1 Away: 5-2 Neutral: 0-0

##	Player	gp-gs	Total		3-Point		F-Throw		Rebounds				pf	dq	a	to	blk	stl	pts	avg		
			min	avg	fg-fga	fg%	3fg-fga	3fg%	ft-fa	ft%	off	def									tot	avg
35	RILEY, Kristen	14-14	432	30.9	77-147	.524	17-38	.447	32-43	.744	29	100	129	9.2	37	1	32	26	13	16	203	14.5
21	EATON, Lexi	14-14	326	23.3	57-124	.460	13-34	.382	28-40	.700	23	17	40	2.9	29	0	22	42	9	12	155	11.1
05	HAMSON, Jennifer	14-0	252	18.0	56-98	.571	0-1	.000	31-43	.721	32	49	81	5.8	22	1	7	14	38	7	143	10.2
33	STEED, Haley	14-14	496	35.4	41-117	.350	23-69	.333	17-21	.810	5	51	56	4.0	28	1	105	40	2	30	122	8.7
04	PARKER, Kim	14-14	408	29.1	35-123	.285	15-69	.217	29-31	.935	8	34	42	3.0	20	0	43	29	5	21	114	8.1
32	PETERSON, Dani	14-14	332	23.7	36-67	.537	2-6	.333	3-6	.500	21	55	76	5.4	24	0	13	17	15	8	77	5.5
12	VERMUNT, Stephanie	14-0	237	16.9	24-77	.312	17-51	.333	2-4	.500	6	27	33	2.4	14	0	14	11	6	4	67	4.8
11	HARRY, Xojjan	14-0	107	7.6	11-24	.458	5-12	.417	2-4	.500	1	6	7	0.5	9	0	2	8	2	6	29	2.1
03	GARFIELD, Ashley	12-0	48	4.0	7-12	.583	1-2	.500	8-10	.800	1	5	6	0.5	3	0	5	2	1	3	23	1.9
02	ROVETTI, Stephanie	13-0	69	5.3	7-14	.500	0-1	.000	5-9	.556	2	4	6	0.5	11	0	8	11	1	4	19	1.5
41	BAILEY, Morgan	11-0	43	3.9	7-17	.412	1-3	.333	1-2	.500	6	6	12	1.1	2	0	2	4	2	3	16	1.5
30	BROWN, Kylie	4-0	5	1.3	1-2	.500	1-2	.500	0-0	.000	0	0	0	0.0	2	0	0	0	0	0	3	0.8
10	KAUFUSI, Alexis	8-0	32	4.0	3-11	.273	0-0	.000	0-0	.000	3	12	15	1.9	10	0	3	6	0	0	6	0.8
50	NAWAHINE, Valerie	1-0	1	1.0	0-0	.000	0-0	.000	0-0	.000	0	0	0	0.0	0	0	0	0	0	0	0	0.0
14	NIELSON, Mackenzie	5-0	7	1.4	0-1	.000	0-0	.000	0-1	.000	1	1	2	0.4	1	0	0	0	0	0	0	0.0
01	DIAS, Sadi	4-0	4	1.0	0-0	.000	0-0	.000	0-0	.000	0	0	0	0.0	0	0	0	0	0	0	0	0.0
55	RYSER, Kari	1-0	1	1.0	0-0	.000	0-0	.000	0-0	.000	0	0	0	0.0	0	0	0	0	0	0	0	0.0
Team											38	27	65				3					
Total.....		14	2800		362-834	.434	95-288	.330	158-214	.738	176	394	570	40.7	212	3	256	213	94	114	977	69.8
Opponents.....		14	2800		258-796	.324	55-203	.271	195-252	.774	173	321	494	35.3	207	-	121	227	29	99	766	54.7

TEAM STATISTICS	BY	OPP	Date	Opponent	Score	Att.
SCORING	977	766	* 12/31/11	at Saint Mary's (CA)	L 48-54	438
Points per game	69.8	54.7	* 1/02/12	at Portland	w 79-53	312
Scoring margin	+15.1	-	* 01/05/12	LOYOLA MARYMOUNT	w 80-47	787
FIELD GOALS-ATT	362-834	258-796	* 1/7/12	at San Francisco	w 76-67	517
Field goal pct	.434	.324	* 1/12/12	PEPPERDINE UNIVER.	w 80-56	1304
3 POINT FG-ATT	95-288	55-203	* 1/14/12	at San Diego	w 62-53	606
3-point FG pct	.330	.271	* 01/19/12	at LMU Lions	w 72-48	298
3-pt FG made per game	6.8	3.9	* 1/21/12	UNIV. OF PORTLAND	w 76-55	1196
FREE THROWS-ATT	158-214	195-252	* 1/28/12	at Santa Clara	w 74-64	805
Free throw pct	.738	.774	* 02/02/12	at Pepperdine	L 49-61	313
F-Throws made per game	11.3	13.9	* 2/4/12	SAINT MARY'S COLLEGE	w 83-47	1296
REBOUNDS	570	494	* 2/9/12	GONZAGA	w 70-40	2014
Rebounds per game	40.7	35.3	* 2/16/12	SAN FRANCISCO	L 64-71	968
Rebounding margin	+5.4	-	* 2/18/12	UNIV. OF SAN DIEGO	w 64-50	1129
ASSISTS	256	121				
Assists per game	18.3	8.6				
TURNOVERS	213	227				
Turnovers per game	15.2	16.2				
Turnover margin	+1.0	-				
Assist/turnover ratio	1.2	0.5				
STEALS	114	99				
Steals per game	8.1	7.1				
BLOCKS	94	29				
Blocks per game	6.7	2.1				
ATTENDANCE	8694	3289				
Home games-Avg/Game	7-1242	7-470				
Neutral site-Avg/Game	-	0-0				

* = Conference game

Score by Periods	1st	2nd	Totals
Brigham Young Univer	461	516	977
Opponents	379	387	766

THE STAT CREW SYSTEM
Brigham Young University Points-Rebounds-Assists (as of Feb 18, 2012)
All games

Opponent	Date	Score	01		02		03		04		05		10		11	
			DIAS,SADI	ROVETTI,ST	GARFIELD,A	PARKER,KIM	HAMSON,JEN	KAUFUSI,AL	HARRY,XOJI							
#8/8 DUKE	11-11-11	55-61	L	DNP	0-0-0	DNP	14-6-2	0-0-0	0-0-1	8-0-1						
at TULSA	11/14/11	64-61	w	DNP	12-2-1	0-0-0	5-3-5	DNP	DNP	0-1-0						
at Kansas State	11/16/11	46-59	L	DNP	0-2-1	0-2-0	11-3-1	DNP	DNP	0-0-0						
at Weber State	11/19/11	84-67	w	DNP	4-0-2	5-1-1	12-4-2	9-7-1	2-1-0	2-0-0						
WISCONSIN	11/23/11	77-59	w	0-0-0	2-0-3	0-2-2	4-1-4	10-3-0	0-0-0	9-0-0						
EASTERN WASHINGTON	11/26/11	77-58	w	0-0-0	3-1-2	2-2-2	13-3-2	13-6-0	6-1-0	5-0-0						
at BYU-Hawaii	11/29/11	88-27	w	0-0-1	3-6-3	7-4-0	17-5-3	8-1-1	2-1-0	8-3-0						
vs Arizona	12/1/11	82-73	w	DNP	0-0-0	DNP	25-4-6	12-7-1	DNP	0-0-0						
vs Syracuse	12/03/11	83-59	w	0-0-0	1-0-2	3-1-2	22-5-6	4-4-1	4-2-0	0-0-0						
SOUTHERN UTAH	12/8/11	82-49	w	0-0-0	8-4-4	6-4-4	17-3-0	4-7-0	2-1-2	3-1-0						
UNIVERSITY OF UTAH	12/10/11	63-58	w	DNP	2-1-0	DNP	0-1-4	6-1-0	0-0-0	2-2-0						
at Utah State	12/17/11	73-65	w	DNP	3-1-0	0-0-0	11-6-1	4-2-2	DNP	0-0-0						
NEVADA	12/22/11	84-53	w	0-0-0	6-3-2	3-2-2	11-1-4	10-10-0	6-1-0	6-2-1						
at Saint Mary's (CA)	12/31/11	48-54	L	DNP	0-0-0	0-0-0	10-4-2	1-2-0	DNP	0-0-0						
at Portland	1/02/12	79-53	w	0-0-0	6-0-2	0-1-0	9-3-3	7-2-0	2-4-0	8-0-1						
LOYOLA MARYMOUNT	01/05/12	80-47	w	0-0-0	0-0-3	4-3-0	6-1-3	9-7-0	0-2-0	5-2-0						
at San Francisco	1/7/12	76-67	w	0-0-0	7-1-0	3-1-1	3-4-4	8-7-1	0-2-0	3-2-0						
PEPPERDINE UNIVER.	1/12/12	80-56	w	DNP	0-0-0	0-0-0	9-4-5	13-2-0	0-2-0	4-2-0						
at San Diego	1/14/12	62-53	w	DNP	0-0-0	DNP	10-2-2	8-3-0	DNP	0-1-1						
at LMU Lions	01/19/12	72-48	w	DNP	3-2-0	2-0-1	3-1-6	8-8-0	0-0-1	2-0-0						
UNIV. OF PORTLAND	1/21/12	76-55	w	DNP	3-1-1	2-0-0	13-1-1	14-10-2	2-2-1	2-0-0						
at Seattle University	01/25/12	69-55	w	DNP	8-3-0	0-0-0	15-3-4	9-7-0	DNP	0-1-0						
at Santa Clara	1/28/12	74-64	w	DNP	DNP	0-0-0	10-3-3	16-8-1	DNP	0-0-0						
at Pepperdine	02/02/12	49-61	L	DNP	0-0-0	0-0-0	7-3-0	5-2-1	DNP	2-0-0						
SAINT MARY'S COLLEGE	2/4/12	83-47	w	0-0-0	0-2-2	8-0-3	5-0-3	18-9-0	2-2-1	3-0-0						
GONZAGA	2/9/12	70-40	w	DNP	0-0-0	4-0-0	16-5-4	14-9-1	0-1-0	0-0-0						
SAN FRANCISCO	2/16/12	64-71	L	DNP	0-0-0	DNP	7-5-3	8-5-0	DNP	0-0-0						
UNIV. OF SAN DIEGO	2/18/12	64-50	w	DNP	0-0-0	0-1-0	6-6-4	14-7-1	DNP	0-0-0						

Opponent	Date	Score	12		14		21		30		32		33		35	
			VERMUNT,ST	NIELSON,MA	EATON,LEXI	BROWN,KYLI	PETERSON,D	STEED,HALE	RILEY,KRIS							
#8/8 DUKE	11-11-11	55-61	L	5-2-1	DNP	10-2-2	DNP	2-4-1	12-15-5	4-4-4						
at TULSA	11/14/11	64-61	w	4-3-0	DNP	4-3-3	DNP	6-8-2	24-3-3	4-12-2						
at Kansas State	11/16/11	46-59	L	0-3-0	DNP	16-5-1	DNP	4-3-1	13-5-5	2-3-2						
at Weber State	11/19/11	84-67	w	8-1-1	0-0-0	12-2-3	DNP	11-4-0	8-10-5	7-8-1						
WISCONSIN	11/23/11	77-59	w	10-3-2	DNP	14-4-2	DNP	15-2-0	4-3-7	9-3-1						
EASTERN WASHINGTON	11/26/11	77-58	w	9-2-1	0-1-0	11-2-2	0-1-0	7-6-0	2-5-8	4-7-0						
at BYU-Hawaii	11/29/11	88-27	w	7-3-2	0-2-0	8-4-1	2-0-0	5-5-1	2-2-6	12-4-2						
vs Arizona	12/1/11	82-73	w	9-0-4	DNP	4-2-3	DNP	7-0-1	10-6-6	15-12-6						
vs Syracuse	12/03/11	83-59	w	7-1-1	0-0-0	10-0-2	0-0-0	14-10-2	10-3-8	6-3-3						
SOUTHERN UTAH	12/8/11	82-49	w	9-4-1	2-1-0	6-5-2	0-0-1	4-3-0	9-6-6	8-6-0						
UNIVERSITY OF UTAH	12/10/11	63-58	w	14-4-0	DNP	8-2-3	DNP	10-3-1	12-9-8	9-5-1						
at Utah State	12/17/11	73-65	w	12-3-1	0-0-0	12-5-4	DNP	14-9-1	8-10-8	9-6-4						
NEVADA	12/22/11	84-53	w	5-2-2	0-2-0	10-0-1	2-0-0	4-4-2	0-2-11	17-6-3						
at Saint Mary's (CA)	12/31/11	48-54	L	3-2-0	DNP	5-1-3	DNP	5-5-1	7-2-5	17-11-1						
at Portland	1/02/12	79-53	w	3-3-2	DNP	11-2-2	3-0-0	4-9-0	5-4-5	19-9-1						
LOYOLA MARYMOUNT	01/05/12	80-47	w	6-4-2	0-0-0	14-1-2	0-0-0	8-2-0	8-5-8	16-3-1						
at San Francisco	1/7/12	76-67	w	5-2-0	0-1-0	11-1-1	DNP	4-6-1	13-2-5	19-5-1						
PEPPERDINE UNIVER.	1/12/12	80-56	w	12-1-0	DNP	15-7-1	DNP	6-7-1	11-3-14	9-8-5						
at San Diego	1/14/12	62-53	w	0-1-4	DNP	16-0-0	DNP	10-7-1	9-6-5	9-13-2						
at LMU Lions	01/19/12	72-48	w	3-2-0	0-0-0	16-3-1	DNP	8-6-0	5-4-9	22-10-4						
UNIV. OF PORTLAND	1/21/12	76-55	w	6-1-0	0-1-0	16-4-5	0-0-0	4-5-0	3-6-10	6-6-3						
at Seattle University	01/25/12	69-55	w	14-2-1	DNP	4-4-1	DNP	0-4-2	3-3-5	16-10-4						
at Santa Clara	1/28/12	74-64	w	3-2-0	DNP	10-5-0	DNP	11-5-0	7-6-5	17-11-2						
at Pepperdine	02/02/12	49-61	L	0-2-1	DNP	6-5-1	DNP	4-2-1	10-4-8	15-13-4						
SAINT MARY'S COLLEGE	2/4/12	83-47	w	7-4-3	0-0-0	8-3-4	0-0-0	8-1-1	7-2-10	15-6-0						
GONZAGA	2/9/12	70-40	w	8-1-0	DNP	4-2-1	DNP	3-10-1	8-2-10	11-10-4						
SAN FRANCISCO	2/16/12	64-71	L	4-6-1	DNP	12-4-0	DNP	2-6-5	15-7-6	16-11-2						
UNIV. OF SAN DIEGO	2/18/12	64-50	w	7-2-1	DNP	11-2-1	DNP	0-5-1	14-3-5	12-13-2						

THE STAT CREW SYSTEM
Brigham Young University Points-Rebounds-Assists (as of Feb 18, 2012)
All games

Opponent	Date	Score	41			50			55		
				BAILEY,MOR	NAWAHINE,V	RYSER,KARI					
#8/8 DUKE	11-11-11	55-61	L	DNP	DNP	DNP					
at TULSA	11/14/11	64-61	w	5-4-0	DNP	DNP					
at Kansas State	11/16/11	46-59	L	0-2-0	DNP	DNP					
at Weber State	11/19/11	84-67	w	4-0-0	DNP	DNP					
WISCONSIN	11/23/11	77-59	w	0-1-0	DNP	DNP					
EASTERN WASHINGTON	11/26/11	77-58	w	2-3-0	DNP	DNP					
at BYU-Hawaii	11/29/11	88-27	w	7-4-1	DNP	DNP					
vs Arizona	12/1/11	82-73	w	DNP	DNP	DNP					
vs Syracuse	12/03/11	83-59	w	2-2-0	DNP	DNP					
SOUTHERN UTAH	12/8/11	82-49	w	4-4-1	DNP	DNP			0-0-0		
UNIVERSITY OF UTAH	12/10/11	63-58	w	DNP	DNP	DNP					
at Utah State	12/17/11	73-65	w	0-0-0	DNP	DNP					
NEVADA	12/22/11	84-53	w	4-2-0	0-1-0	0-0-0					
at Saint Mary's (CA)	12/31/11	48-54	L	DNP	DNP	DNP					
at Portland	1/02/12	79-53	w	2-1-0	DNP	DNP					
LOYOLA MARYMOUNT	01/05/12	80-47	w	4-4-0	DNP	DNP					
at San Francisco	1/7/12	76-67	w	0-3-0	DNP	DNP					
PEPPERDINE UNIVER.	1/12/12	80-56	w	1-1-0	DNP	DNP					
at San Diego	1/14/12	62-53	w	DNP	DNP	DNP					
at LMU Lions	01/19/12	72-48	w	0-0-0	DNP	DNP					
UNIV. OF PORTLAND	1/21/12	76-55	w	5-0-1	DNP	DNP					
at Seattle University	01/25/12	69-55	w	DNP	DNP	DNP					
at Santa Clara	1/28/12	74-64	w	0-0-0	DNP	DNP					
at Pepperdine	02/02/12	49-61	L	0-0-0	DNP	DNP					
SAINT MARY'S COLLEGE	2/4/12	83-47	w	2-2-1	0-0-0	0-0-0					
GONZAGA	2/9/12	70-40	w	2-1-0	DNP	DNP					
SAN FRANCISCO	2/16/12	64-71	L	DNP	DNP	DNP					
UNIV. OF SAN DIEGO	2/18/12	64-50	w	0-0-0	DNP	DNP					

THE STAT CREW SYSTEM
Brigham Young University Team Game-by-Game Comparison (as of Feb 18, 2012)
All games

Opponent	1st	2nd	Score	Mar	Total FG	FG Pct	3-Pointers	3FG Pct	Free Throws	FT Pct	Rebounds	Assist	T/Over	Block	Steal	Fouls
#8/8 DUKE	20/27	35/34	55-61	(6)	19-56/23-53	.339/.434	7-22/5-14	.318/.357	10-13/10-18	.769/.556	41/35 +6	17/16	22/17	4/6	8/14	17/16
TULSA	28/27	36/34	64-61	+3	21-52/21-56	.404/.375	8-17/4-11	.471/.364	14-25/15-23	.560/.652	41/38 +3	16/8	24/22	5/4	9/7	26/20
Kansas State	21/29	25/30	46-59	(13)	19-55/23-62	.345/.371	3-14/3-17	.214/.176	5-5/10-12	1000/.833	35/40 (5)	11/11	16/9	2/4	6/5	14/7
Weber State	48/28	36/39	84-67	+17	28-58/25-68	.483/.368	2-13/3-20	.154/.150	26-31/14-19	.839/.737	43/36 +7	16/10	13/14	5/1	9/3	17/22
WISCONSIN	46/33	31/26	77-59	+18	31-58/20-48	.534/.417	5-18/3-15	.278/.200	10-12/16-21	.833/.762	29/31 (2)	21/10	10/19	6/0	14/5	19/15
EASTERN WASHINGTON	36/19	41/39	77-58	+19	22-61/19-58	.361/.328	6-18/8-20	.333/.400	27-37/12-19	.730/.632	49/43 +6	17/14	15/21	6/6	8/8	18/25
BYU-Hawaii	48/8	40/19	88-27	+61	37-81/12-44	.457/.273	4-16/1-9	.250/.111	10-14/2-5	.714/.400	46/34 +12	21/4	16/46	4/1	29/8	11/10
Arizona	38/33	44/40	82-73	+9	30-62/27-59	.484/.458	11-21/6-16	.524/.375	11-15/13-16	.733/.813	35/35 -	27/14	19/21	7/3	9/8	12/14
Syracuse	45/25	38/34	83-59	+24	31-63/20-54	.492/.370	11-26/0-7	.423/.000	10-17/19-23	.588/.826	36/36 -	27/7	14/19	1/2	8/6	20/13
SOUTHERN UTAH	35/15	47/34	82-49	+33	28-70/13-62	.400/.210	4-14/2-9	.286/.222	22-31/21-31	.710/.677	54/49 +5	21/7	18/28	15/2	15/7	27/25
UNIVERSITY OF UTAH	30/29	33/29	63-58	+5	22-53/20-51	.415/.392	8-20/10-20	.400/.500	11-15/8-12	.733/.667	34/34 -	17/13	7/11	3/0	4/1	13/15
Utah State	24/34	49/31	73-65	+8	25-63/24-55	.397/.436	11-30/6-15	.367/.400	12-16/11-16	.750/.688	45/30 +15	21/16	16/13	3/1	12/7	12/12
NEVADA	44/22	40/31	84-53	+31	35-59/18-56	.593/.321	3-10/2-10	.300/.200	11-15/15-26	.733/.577	40/32 +8	28/9	22/23	6/1	15/13	20/15
Saint Mary's (CA)	24/30	24/24	48-54	(6)	15-46/15-51	.326/.294	6-21/2-8	.286/.250	12-17/22-28	.706/.786	31/43 (12)	12/7	20/20	4/0	8/7	22/17
Portland	27/26	52/27	79-53	+26	27-67/18-59	.403/.305	11-28/3-10	.393/.300	14-17/14-21	.824/.667	45/36 +9	16/12	17/17	14/2	6/7	17/17
LOYOLA MARYMOUNT	48/22	32/25	80-47	+33	33-63/17-52	.524/.327	9-19/3-12	.474/.250	5-6/10-15	.833/.667	42/25 +17	19/5	12/10	5/5	2/4	14/12
San Francisco	38/32	38/35	76-67	+9	30-57/24-67	.526/.358	9-20/4-18	.450/.222	7-12/15-19	.583/.789	41/33 +8	14/6	19/12	6/5	5/10	16/10
PEPPERDINE UNIVER.	37/27	43/29	80-56	+24	33-61/20-63	.541/.317	7-20/3-13	.350/.231	7-9/13-15	.778/.867	42/31 +11	26/9	19/17	10/1	14/9	13/13
San Diego	30/29	32/24	62-53	+9	23-50/19-63	.460/.302	5-16/2-17	.313/.118	11-16/13-16	.688/.813	36/40 (4)	15/6	17/15	9/0	10/8	14/15
LMU Lions	31/20	41/28	72-48	+24	28-55/18-53	.509/.340	5-15/5-11	.333/.455	11-15/7-10	.733/.700	38/28 +10	22/12	13/17	5/2	11/7	11/13
UNIV. OF PORTLAND	41/28	35/27	76-55	+21	29-68/18-54	.426/.333	9-24/6-19	.375/.316	9-13/13-16	.692/.813	42/37 +5	24/10	10/18	6/3	12/6	13/15
Seattle University	36/22	33/33	69-55	+14	27-54/18-63	.500/.286	8-19/5-23	.421/.217	7-11/14-18	.636/.778	38/39 (1)	17/8	16/13	8/0	7/7	14/13
Santa Clara	36/39	38/25	74-64	+10	25-63/24-57	.397/.421	7-18/5-23	.389/.217	17-22/11-14	.773/.786	43/32 +11	11/8	13/16	3/2	3/4	13/17
Pepperdine	23/22	26/39	49-61	(12)	18-49/18-51	.367/.353	4-24/5-14	.167/.357	9-12/20-26	.750/.769	36/34 +2	16/7	23/13	6/1	7/12	19/12
SAINT MARY'S COLLEGE	44/23	39/24	83-47	+36	33-70/12-47	.471/.255	8-24/1-10	.333/.100	9-14/22-29	.643/.759	35/43 (8)	28/9	9/29	9/0	17/7	20/14
GONZAGA	24/20	46/20	70-40	+30	23-51/14-64	.451/.219	6-17/3-11	.353/.273	18-23/9-13	.783/.692	44/37 +7	21/7	18/15	5/1	6/9	9/20
SAN FRANCISCO	32/35	32/36	64-71	(7)	24-76/22-58	.316/.379	2-20/8-21	.100/.381	14-17/19-22	.824/.864	51/39 +12	17/13	13/13	7/1	7/6	20/17
UNIV. OF SAN DIEGO	26/26	38/24	64-50	+14	21-58/19-57	.362/.333	7-22/5-16	.318/.313	15-21/7-8	.714/.875	44/36 +8	15/10	10/15	5/6	6/3	11/15

Note: Game totals are displayed in the format TEAM/OPPONENT for each category

2011-2012 BYU BASKETBALL RADIO/TV ROSTER



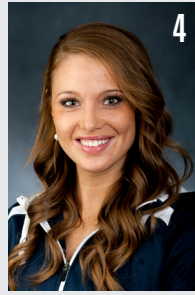
SADI DIAS
FRESHMAN, 5-7, GUARD



STEPHANIE ROVETTI
FRESHMAN, 5-6, GUARD



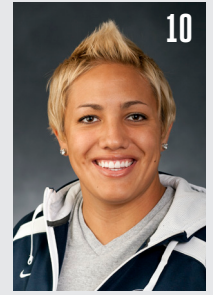
ASHLEY GARFIELD
FRESHMAN, 5-10, GUARD



KIM PARKER
SOPHOMORE, 5-11, GUARD



JENNIFER HAMSON
SOPHOMORE, 6-7, CENTER



ALEXIS KAFUSI
JUNIOR, 6-1, FORWARD



XOJIAN HARRY
FRESHMAN, 5-11, GUARD



STEPHANIE VERMUNT
SOPHOMORE, 6-0, FORWARD/
GUARD



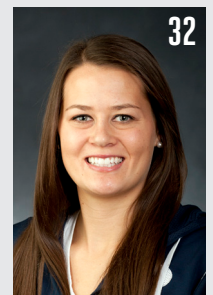
MACKENZIE NIELSON
FRESHMAN, 6-0, FORWARD



LEXI EATON
FRESHMAN, 5-10, GUARD



KYLIE BROWN
FRESHMAN, 5-7, GUARD



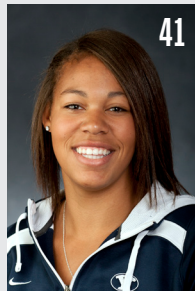
DANI PETERSON
SENIOR, 6-1, FORWARD



HALEY STEED
SENIOR, 5-4, GUARD



KRISTEN RILEY
SENIOR, 6-3, FORWARD



MORGAN BAILEY
FRESHMAN, 6-2, FORWARD



VALERIE NAWAHINE
FRESHMAN, 5-9, GUARD



KARI RYSER
SOPHOMORE, 5-8, GUARD



JEFF JUDKINS
HEAD COACH



CHRIS BOETTCHER
ASSISTANT COACH



MELINDA BENDALL
ASSISTANT COACH



RAY STEWART
ASSISTANT COACH

