

STATE OF GEORGIA SYSTEM OF STATE ROADS

Prepared By
STATE HIGHWAY BOARD OF GEORGIA

DIVISION OF HIGHWAY PLANNING

Scale of Miles

0 10 20 30 40 Miles

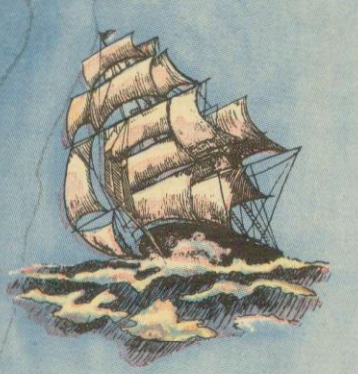
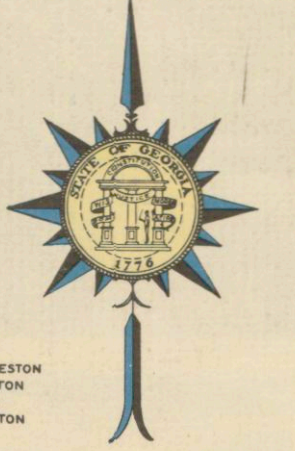
APPROVED -
E. C. Harty
STATE HIGHWAY ENGINEER

APPROVED BY THE STATE HIGHWAY BOARD IN REGULAR SESSION,
JANUARY 13, 1938

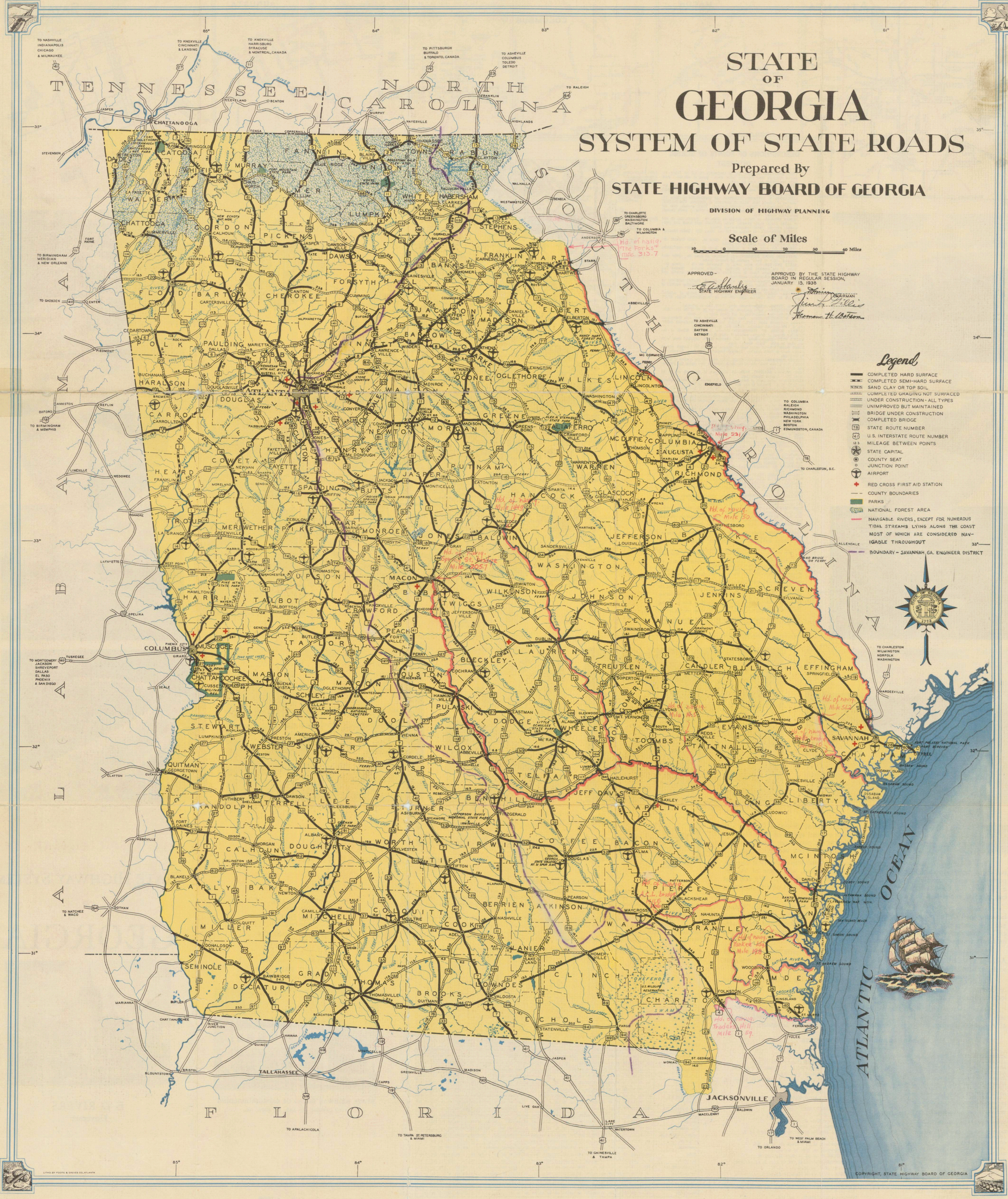
James H. Harty
Chairman
Thomas H. Harty
Member

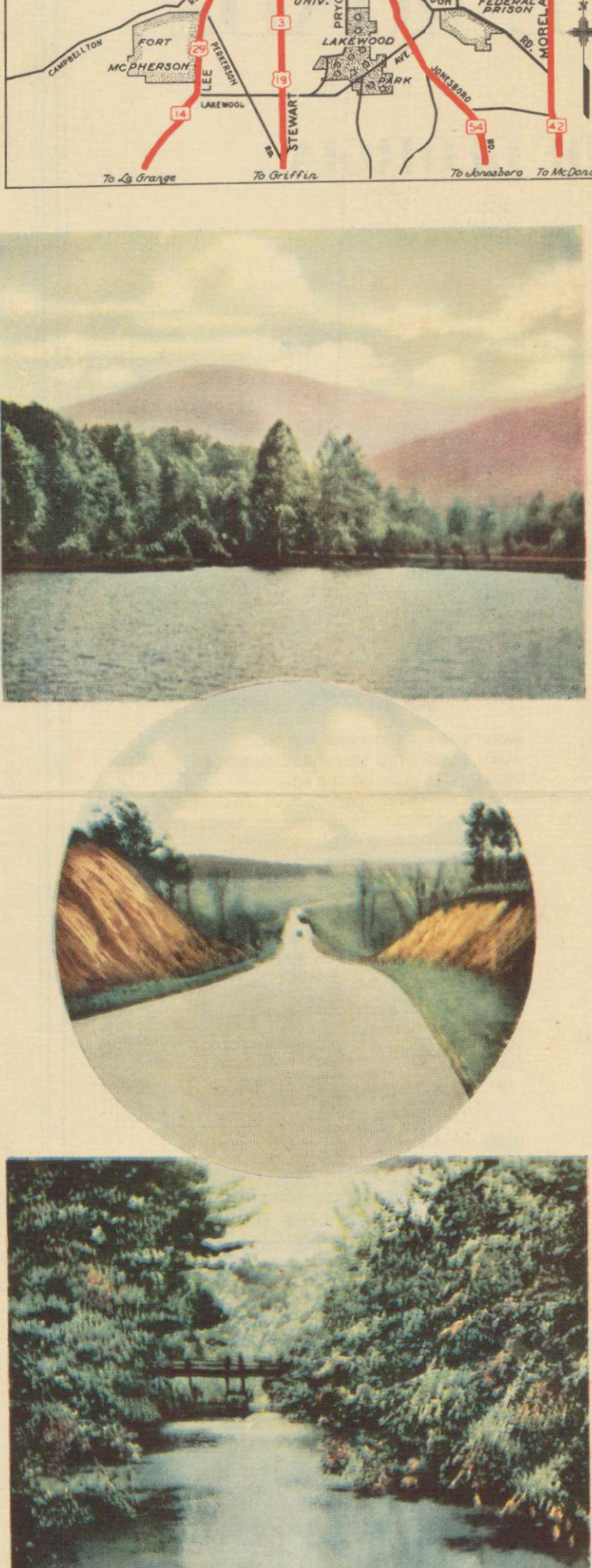
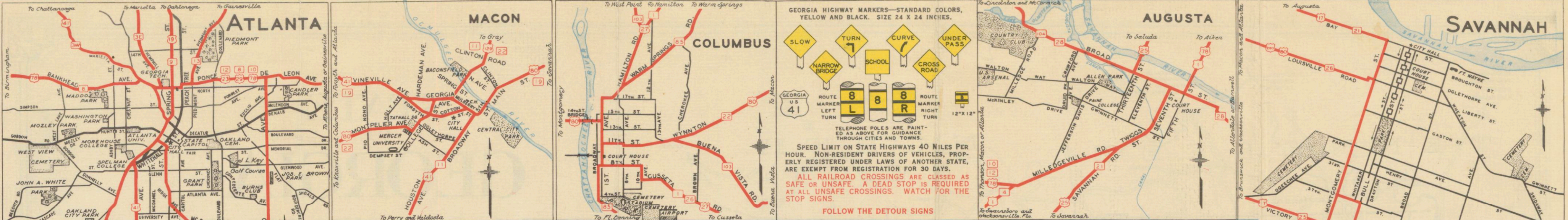
Legend

- COMPLETED HARD SURFACE
- COMPLETED SEMI-HARD SURFACE
- SAND CLAY OR TOP SOIL
- COMPLETED GRADING NOT SURFACED
- UNDER CONSTRUCTION - ALL TYPES
- UNIMPROVED BUT MAINTAINED
- BRIDGE UNDER CONSTRUCTION
- COMPLETED BRIDGE
- STATE ROUTE NUMBER
- U.S. INTERSTATE ROUTE NUMBER
- MILEAGE BETWEEN POINTS
- STATE CAPITAL
- COUNTY SEAT
- JUNCTION POINT
- AIRPORT
- RED CROSS FIRST AID STATION
- COUNTY BOUNDARIES
- PARKS
- NATIONAL FOREST AREA
- NAVIGABLE RIVERS, EXCEPT FOR NUMEROUS TIDAL STREAMS LYING ALONG THE COAST MOST OF WHICH ARE CONSIDERED NAVIGABLE THROUGHOUT
- BOUNDARY - SAVANNAH GA. ENGINEER DISTRICT



ATLANTIC OCEAN





DESCRIPTIONS OF POINTS OF SCENIC INTEREST

STATE PARKS

FORT MOUNTAIN—12 miles east of Chatworth on US 76 (State 2). One of Georgia's most beautiful scenic spots. Ruins of old fort. Park under construction but open to public. **Cabin**—11.7 miles south of Blairsville on US 19 (State 11). Cabin accommodations; 40-acre lake for swimming, fishing, boating; picnic grounds; 6 miles of trails.

ALEXANDER H. STEPHENS MEMORIAL—At Crawfordville on State 12. Location of Liberty Hall, home of Alexander H. Stephens, Vice-President of the Confederacy. Entire property restored. Picnic grounds, lake for swimming and boating; children's wading pool; 6 miles of trails through beautifully wooded areas.

INDIAN SPRINGS—At Indian Springs on State 42. Historic spa, on site of Indian treaty; picnic grounds; trails; children's sand beach and playground; museum. Hotel accommodations nearby.

LITTLE SCULLEE—At McRae on US 341 (State 27). Under construction but open to the public.

PINE MOUNTAIN—At Chipley on US 27 (State 11). Scenic highway under construction; park open to the public.

CREWATER—2.5 miles north of Albany on State 91. Under construction but open to the public.

JEFFERSON DAVIS MEMORIAL—At Irwinville on State 22. Under construction. Site of Davis capture by Federal troops.

SANTO DOMINGO—3.5 miles north of Brownsville on US 17 (State 25). Ruins of the supposed Santo Domingo de Talaxa Mission. Spanish inn containing artifacts found in excavation of lagoons; picnic grounds and trails through sub-tropical vegetation.

STATE CAPITOL—Atlanta—Patterned after our National Capitol; completed in 1889. House State Library and State Museum of many interesting exhibits of geological specimens and wild life native to Georgia.

ROBERTA GRANT PARK—Atlanta—Site of the Battle of Atlanta, fought July 22, 1864. 50 foot high, 400 feet in circumference, weighs 18,000 pounds.

FEDERAL PRISON—Atlanta—Houses about 3,000 Federal prisoners.

FORT McPHERSON—4 miles southwest of Atlanta on US 29 (State 14). Military Reservation and headquarters of 4th Corps Area U. S. Army.

EMORY UNIVERSITY—Emory, near Atlanta. Liberal Arts and Professional School; enrollment about 1,800. Library—Babington-Babington collection of 7,000-year-old mummies, Indian and State Age relics.

GEORGIA SCHOOL OF TECHNOLOGY—Atlanta—Engineering School of the University System of Georgia; enrollment about 3,000.

WEBB'S REST—Atlanta—Home of Joel Chandler Harris, preserved much as it was when he wrote "Tale of Two Cities".

STONE MOUNTAIN—16 miles east of Atlanta on State 10. Largest exposed granite dome in North America. Partially completed Confederate Memorial on its sheer side.

SIGNERS MONUMENT—Augusta—Dedicated under which lie the remains of George Walton and Lyman Hall, two of the three Georgians who signed the Declaration of Independence.

FORT PALMER NATIONAL PARK—15 miles east of Savannah on US 80 (State 26). Restored historic fort.

BETHESDA—9 miles south of Savannah on US 17 (State 25). Oldest orphanage in U. S. A. Founded by the Rev. George Whitfield in 1740.

LOW HOUSE—Savannah—Site of the founding of the first Girl Scout troop.

CHRIST CHURCH—Savannah—The first organized congregation in the colony (1733) and said to be where Rev. John Wesley organized the first Protestant Sunday school in the world.

FORT SCREVEN—17 miles east of Savannah on US 80 (State 26). U. S. Military Reservation on Tybee Island.

RENEZAN CHURCH—Near Savannah River, east of Springfield on State 119. Built in 1769, one of the oldest Colonial buildings in Georgia still in use. Occupied as British army headquarters during Revolutionary War.

LANIER'S OAK—Brunswick—The tree under which Sidney Lanier received inspiration for his poem, "The Marshes of Glynn".

FORT FREDERICK—St. Simons Island—Historic fort built by Oglethorpe in 1736; considered the largest British fort in America.

NANCY HART FOREST PARK—One mile east of State 17, two miles south of Elberton. Home place of Nancy Hart, Georgia's famous Revolutionary heroine. Reproduction of her cabin on original site.

OLD STATE CAPITOL—Milledgeville—Seat of Government from 1807 to 1868. Now houses a military school.

UNIVERSITY OF GEORGIA—Athens—Oldest chartered State University in the U. S. A. (1785).

TREE THAT OWNS ITSELF—Athens—By deed of 1868 from W. H. Jackson.

FORT BENNING—9 miles south of Columbus on US 27 (State 11). Military Reservation; largest infantry school in the world.

WESLEYAN COLLEGE—Macon—Oldest chartered women's college to grant degrees in the U. S. A.

SCULLEE NATIONAL MONUMENT—2 miles southeast of Macon on US 80 (State 19). Five prehistoric Indian mounds of archaeological interest; park and museum under construction but open to the public.

BERRY SCHOOLS—Rome—2 miles north of Rome on US 27 (State 11). Famous educational institution for mountain children.

OLD SLAVE MARKET—Lorville—Built in 1758. It is probably the only slave market of its type still standing in the South.

NATIONAL CEMETERY—Andersonville—On State 49. Site of historic Confederate prison.

MIDWAY CHURCH—Midway—On US 17 (State 25). Founded by Congregationalists in 1732; present structure erected in 1792.

SANTA MARIA MISSION—St. Marys—On State 40. Supposed ruins of an old Spanish Mission.

SKIFFERIDGE SWAMP—South of Waynesboro on US 1 (State 4) and State 49. Wild life reservation covering 400 square miles. Retreat of many kinds of wild life, a place of mystery and romance.

PROVIDENCE CAVERNS—Near Lumpkin. Soil erosion chasms as much as 200 feet deep. Known as the Grand Cañons of Georgia.

LITTLE WHITE HOUSE—Warm Springs—On State 41. Part-time home of President Franklin D. Roosevelt. Site of medicinal springs and Warm Springs Reservation.

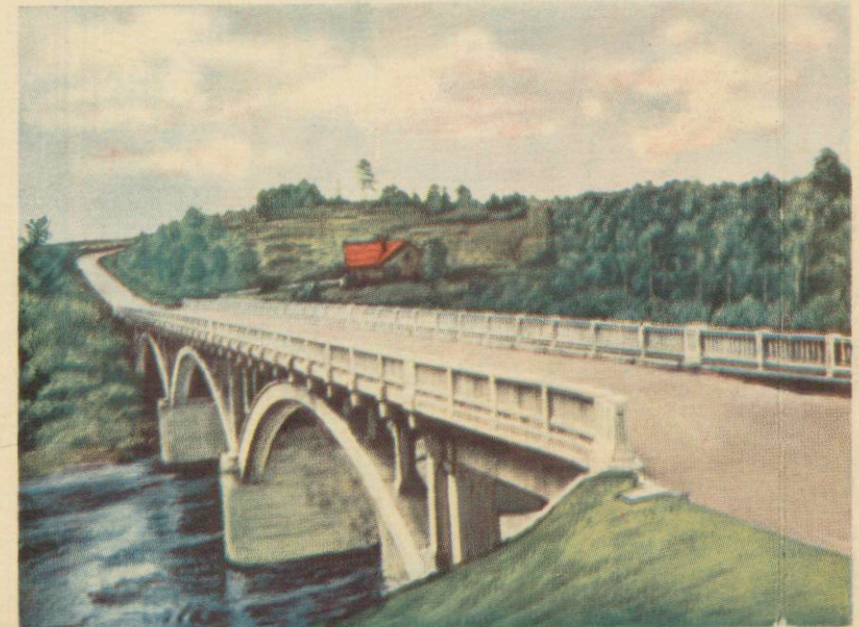
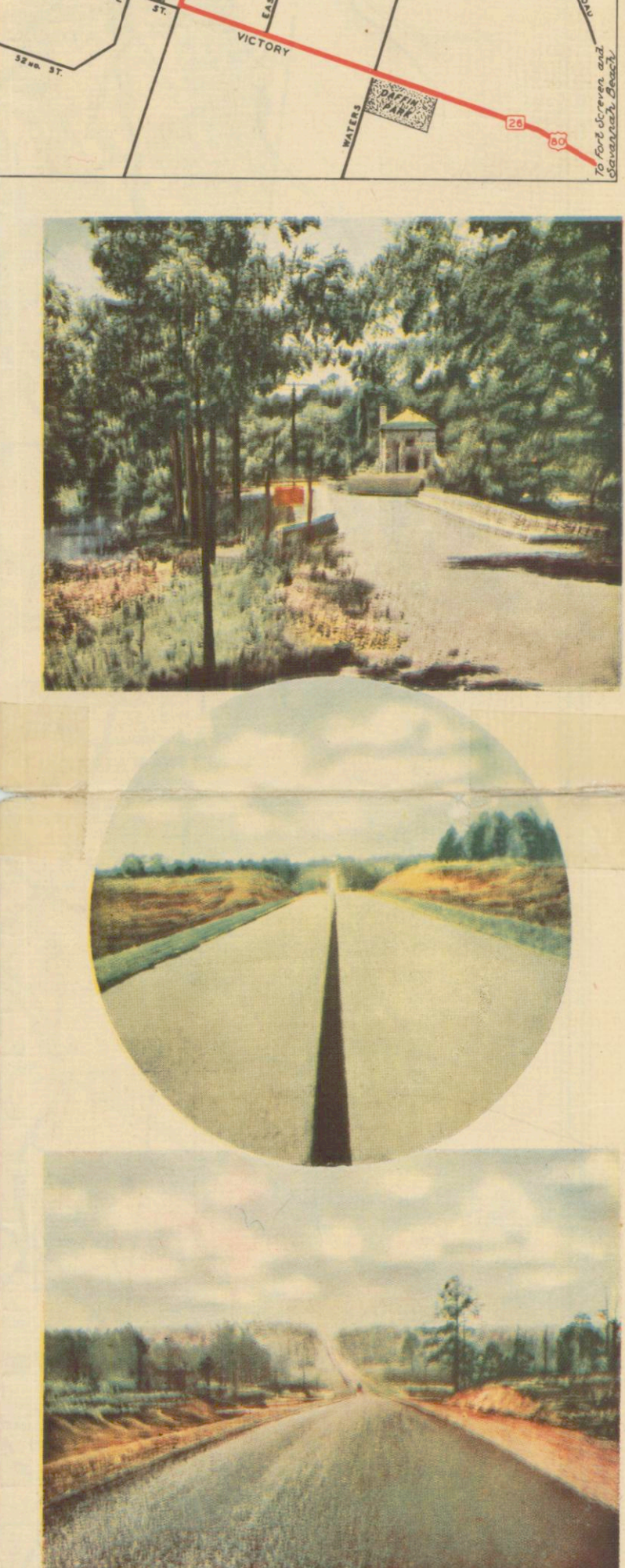
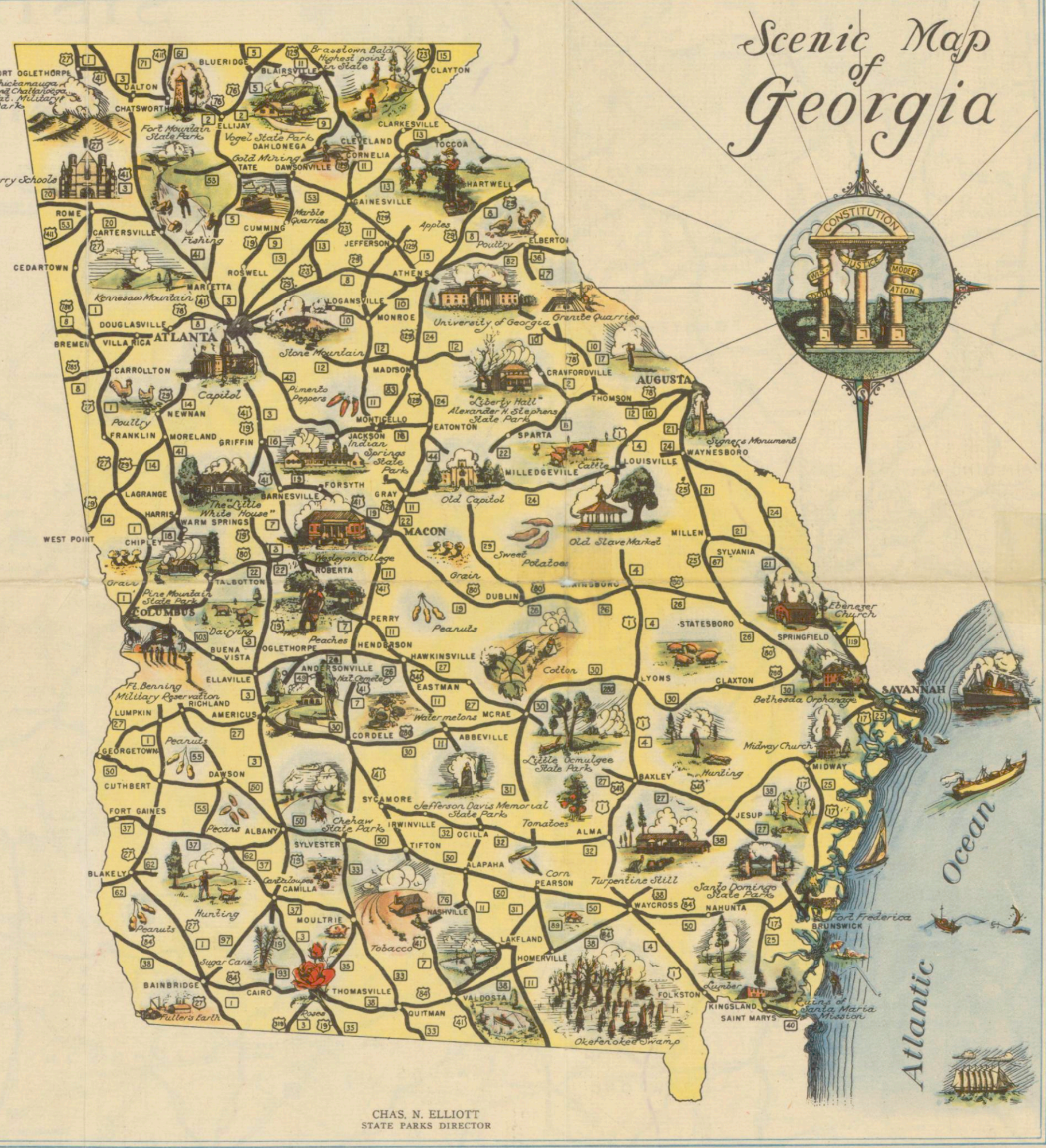
CHICKAMAUGA AND CHATTANOOGA NATIONAL MILITARY PARK—On US 27 (State 11). 3.5 miles south of Georgia-Tennessee line, lying along the highway for 3 miles. Established by Act of Congress of 1890.

BRASSTOWN BALD—10 miles south of Hiwassee near State 75. Altitude 4,766 feet. Highest point in Georgia.

AMICALOLA FALLS—16 miles northwest of Dawsonville on State 43. Formed by several cascades with a total drop of 729 feet.

TOCCOA FALLS—2 miles from Toccoa on State 17. Bridal veil falls 186 feet high.

TALLULAH GORGE—Tallulah Falls—On US 23 (State 15). Deep gorge cut by the Tallulah River. One of the most beautiful scenic attractions in the State.



THIS MAP is presented to you by the State Highway Board of Georgia with the hope that it will help to guide you over our vast system of State highways and will suggest, not only to guest motorists but also to our own residents, a few of the points of interest within our State well worth seeing.

There are many points and towns of historic interest and scenic beauty in Georgia, but space permits us to show only a few on the Scenic Map, with some of the important highway connections to show that they may be reached easily. We feel that a visit to any of these will stimulate your interest sufficiently to visit others not shown, but of equal importance and beauty throughout the State.

There is no season of the year when Georgia highways will not lead you through beautiful scenes. The mountain grandeur of our northern section, the beautiful central and southern portions, and the coast, with its rich historic traditions and "old southern" atmosphere, all beckon to the traveler. There is not a single section which cannot be reached over smooth and well-marked highways.

The State Highway Board and the people of Georgia invite the motorists of America to visit the Empire State of the South and enjoy its scenic beauty and true southern hospitality.

Copies of this map may be obtained upon application to the State Highway Board of Georgia, 2 Capitol Square, Atlanta; any Chamber of Commerce in the State or any local newspaper in towns in which there is no Chamber of Commerce.

Current detour information may be obtained upon application to the State Highway Board, Atlanta, or the Division offices of the State Highway Department, located at Augusta, Columbus, Fitzgerald, Gainesville, Macon, Rome and Savannah.

COMMERCIAL AND EMERGENCY AIRPORTS

NOTE: Mileage is from center of city

ADAIRSVILLE—E. of US 41 (State 3); 1.5 mi. N.	JACKSON—S. mi. S.W.
ALBANY—W. of State 91; 1.5 mi. S.W.	JEFFERSON—S. of US 129 (State 15); 1.5 mi. S.E.
ALMA—S. of State 32; 1 mi. S.W.	LAGRANGE—CALLAWAY FIELD. E. of State 14; 3 mi. S.W.
AMERICUS—1.5 mi. S.	LAVONIA—E. of State 59; 2 mi. N.E.
ATHENS—EPPS FIELD. N. of State 10; 4 mi. N.E.	MACON—HERBERT SMART FIELD. E. of State 87; 5.5 mi. S.E.
ATLANTA—CANDLER FIELD. Between US 19 (State 3) and US 27 (State 11); 9.5 mi. S.W. from new P.O.	MADISON—E. of US 41 (State 7); 2.5 mi. W.
AUGUSTA—DANIEL FIELD. S. of Water Works; W. of U. S. Government Hospital; 5.1 mi. W.S.W.	MCGRAE—S. of State 27; 1.0 mi. S.E.
BAINBRIDGE—COMMODORE DECATUR AIRPORT. S. of US 84 (State 38); 2 mi. W.	MILLEDGEVILLE—CASE-FOWLER AIRPORT. W. of State 24; 1.9 mi. N.W.
BIRMINGHAM—LYNWOOD AIRPORT. N. of County (dirt) Rd.; 1.8 mi. N.	MOULTREE—CLARK FIELD. 1 mi. N.W.
BUENA VISTA—At intersection of State 26 and 41; 1.3 mi. N. by N.W.	ROME—3 mi. N.W.
CARTERSVILLE—E. of State 20; 2.5 mi. N.E.	ROYSTON—E. of State 17; 1 mi. N.
COCHRAN—S. of State 26; 2 mi. E.	SAVANNAH—HUNTER FIELD. S. of State 26; 5 mi. S.
COLUMBUS—S. of US 27 (State 11); 2.5 mi. S.E.	STATESBORO—E. of State 73; 3.7 mi. N.E.
CORDELE—0.2 mi. W. of US 41 (State 7); 2 mi. N.W.	SWAINSBORO—E. of US 41 (State 4); 1.5 mi. S.E.
DALTON—E. of State 71; 2 mi. N.	TALLAPOSA—10 mi. S.W. of Bremen.
DOUGLAS—W. of State 31; 1.5 mi. S.	THOMASTON—W. of US 19 (State 3); 2 mi. N.
ELBERTON—S. of State 36, E. of State 17; 2.5 mi. S.E.	THOMASVILLE—YESE FIELD. W. of State 3; 1.2 mi. S.W.
FILBERTON—S. of State 36, E. of State 17; 2.5 mi. S.E.	TIFTON—W. of US 41 (State 7); 1 mi. S.
FOLKSTON—W. of US 1 (State 4); 1.5 mi. N.W.	VALDOSTA—W. of US 41 (State 7); 2.5 mi. N.
FORT BENNING—On Chattahoochee River, W. of headquarters, Gainesville—E. of County Rd.; 2 mi. S.S.E.	WARM SPRINGS—ROOSEVELT FIELD. E. of State 41; 2.5 mi. N.
GRAFFIN—W. of State 3; 1.8 mi. S.	WAYCROSS—WARE COUNTY AIRPORT. W. of US 1 (State 4); 3.5 mi. N.W.
	WINDER—RUSSELL FIELD. 1 mi. N.E.

Typical Scenes Along Georgia Highways

MILEAGE CHART

This chart shows the distance between some of the principal points in Georgia; also distances between these points and several important cities in other States. Distances are based upon mileage from center of corporation to center of corporation via the shortest practicable route. For distances between points, other than those shown on this chart, see map on reverse side.

HOW TO USE CHART. The mileage between any two points is shown at the intersection of the horizontal line leading from left to right from one of the points, with the vertical line leading downward from the other. For instance, to find the distance from Albany to Atlanta, follow the line leading to the right from Albany until it intersects the line leading to Atlanta. The figure in the square is 169 which is the mileage between the two points.

	ALBANY	AMERICUS	ANDERSON, S. C.	ATHENS	ATLANTA	AUGUSTA	BAINBRIDGE	BIRMINGHAM, ALA.	BRUNSWICK	CHATTANOOGA, TENN.	COLUMBUS	DUBLIN	FORT VALLEY	GREENVILLE, S. C.	GREENSBORO, N. C.	JACKSONVILLE, FLA.	LAGRANGE	MILLEDGEVILLE	MONTELEONE, ALA.	MOUTRIE	QUITMAN	ROME	SANVANNAH	TALLAHASSEE, FLA.	THOMASVILLE	TIFTON	VALDOSTA	WAYCROSS		
ALBANY	37	260	354	189	169	241	63	239	177	289	93	134	85	221	292	130	196	143	111	145	171	46	77	239	227	94	60	43	90	118
AMERICUS	37	223	118	162	132	204	100	216	214	255	68	97	48	184	256	94	233	118	74	107	153	83	114	202	211	131	96	73	120	148
ANDERSON, S. C.	240	223	94	62	130	95	325	298	305	124	239	207	178	94	32	157	355	192	132	117	276	307	225	228	338	304	258	305	278	305
ATHENS	189	162	132	94	156	210	188	417	387	398	229	319	207	272	182	62	249	439	277	246	229	370	401	258	321	433	398	352	393	317
ATLANTA	169	132	204	68	101	261	236	272	170	171	116	41	94	95	332	135	90	73	285	214	131	234	282	247	194	245	227	195	241	245
AUGUSTA	241	204	96	188	101	171	363	139	210	294	231	110	105	142	112	101	260	233	130	316	255	363	240	131	328	283	227	244	193	193
BAINBRIDGE	63	100	235	177	241	232	303	268	350	130	197	147	284	367	193	203	180	173	124	179	64	64	279	299	40	41	97	87	160	
BIRMINGHAM, ALA.	239	214	298	387	224	168	339	284	417	158	140	290	239	230	331	162	435	148	235	208	370	401	258	316	127	418	319	282	329	357
BRUNSWICK	177	214	298	387	224	168	339	284	417	158	140	290	239	230	331	162	435	148	235	208	370	401	258	316	127	418	319	282	329	357
CHATTANOOGA, TENN.	289	255	224	179	107	221	324	355	158	405	250	146	182	312	326	243	77	292	198	194	341	163	141	360	81	205	167	135	123	40
COLUMBUS	93	68	239	177	107	221	324	355	158	405	250	146	182	312	326	243	77	292	198	194	341	163	141	360	81	205	167	135	123	40
DUBLIN	134	97	207	307	117	148	119	197	200	146	271	156	73	157	239	108	223	169	55	47	233	136	164	217	129	198	163	113	160	108
FORT VALLEY	85	48	178	272	116	100	147	239	122	223	91	73	152	210	41	222	95	26	60	176	104	138	169	192	170	135	86	133	161	161
GREENVILLE, S. C.	221	284	94	156	41	52	142	284	220	312	130	161	157	152	111	91	347	119	101	239	270	300	131	249	218	282	243	269	249	249
GREENSBORO, N. C.	292	256	32	62	94	163	117	357	331	326	256	282	239	210	61	212	372	240	181	165	150	339	241	244	370	336	290	337	295	295
GRIFIN	130	94	157	249	95	31	161	193	124	162	90	116	91	212	287	59	53	81	163	193	198	108	317	225	190	141	297	289	289	289
JACKSONVILLE, FLA.	156	233	356	439	322	260	362	260	478	747	289	223	247	372	287	339	242	304	179	148	395	158	149	144	171	134	78	78	78	78
LAGRANGE	143	118	197	272	116	100	147	239	122	223	91	73	152	210	41	222	95	26	60	176	104	138	169	192	170	135	86	133	161	161
MACON	111	74	152	246	90	93	130	173	235	198	216	101	55	28	130	184	53	242	114	34	186	124	155	162	184	152	156	153	164	164
MILLEDGEVILLE	145	107	135	229	73	104	93	226	193	227	135	47	60	101	167	81	234	154	34	220	154	188	173	176	220	185	136	187	156	164
MONTELEONE, ALA.	171	153	317	367	265	187	316	179	107	349	243	85	233	176	239	350	165	306	106	186	270	217	246	360	754	218	114	240	289	289
MOUTRIE	46	83	276	370	214	223	255	68	285	163	346	140	136	104	270	359	179	109	124	154	217	31	285	211	63	28	28	49	112	112
QUITMAN	77	114	307	401	245	247	263	66	316	141	170	161	148	138	300	339	199	148	220	155	188	246	31	308	190	63	28	53	19	82
ROME	239	202	225	258	131	69	240	279	127	360	148	147	161	131	241	108	395	99	162	173	109	285	308	339	241	244	370	336	329	317
SANVANNAH	227	211	228	227	224	277	133	259	418	81	400	284	129	192	244	244	237	158	164	76	369	211	193	246	251	218	183	171	109	109
TALLAHASSEE, FLA.	94	107	249	95	29	163	193	162	240	162	109	21	91	212	287	59	53	81	163	193	198	108	317	225	190	141	297	289	289	289
THOMASVILLE	196	233	356	439	282	332	362	260	403	478	747	289	223	247	372	287	339	242	304	179	148	395	158	149	144	171	134	78	78	78
TIFTON	143	118	197	272	116	100	147	239	122	223	91	73	152	210	41	222	95	26	60	176	104	138	169	192	170	135	86	133	161	161
VALDOSTA	111	74	152	246	90	93	130	173	235	198	216	101	55	28	130	184	53	242	114	34	186	124	155	162	184	152	156	153	164	164
WAYCROSS	145	107	137	227	245	181	150	243	160	368	211	108	161	249	295	209	78	271	164	156	289	112	82	317	109	410	105	175	63	63